



EXTERIOR RENDERING - TERRACE

2100
PENNSYLVANIA
AVENUE NW
Washington, DC



WDG
1025 Connecticut Ave., NW, Ste. 300
Washington, DC 20036
T 202 857 8300
F 202 463 2198

PCPA
Pelli Clarke Pelli Architects
322 Eighth Avenue, 11th Floor
New York, New York 10001
T 212 417 9496
F 212 417 9497

WMC
WELLS FARGO CORPORATION
11860 Sunrise Valley Drive, Ste 200
Reston, VA 20191
T 703 391 7600

Boston Properties
2200 Pennsylvania Ave. NW, Ste. 200W
Washington, DC 20037
T 202 585 0847

Seal/Signature

Date

09/21/2017

Project Name

2100
PENNSYLVANIA
AVENUE NW

Project Number

A1613

Description

RENDERING-
EXTERIOR TERRACE

Scale

A- 305

COPYRIGHT © 2017
Pelli Clarke Pelli Architects

2100
PENNSYLVANIA
AVENUE NW
Washington, DC



THE GEORGE
WASHINGTON
UNIVERSITY
WASHINGTON DC

WDG

1025 Connecticut Ave., NW, Ste. 300
Washington, DC 20036
T 202 857 8300
F 202 463 2198

PCPA

Pelli Clarke Pelli Architects
322 Eighth Avenue, 11th Floor
New York, New York 10001
T 212 417 9496
F 212 417 9497

WMC

11860 Sunrise Valley Drive, Ste 200
Reston, VA 20191
T 703 391 7600

Boston Properties

2200 Pennsylvania Ave. NW, Ste. 200W
Washington, DC 20037
T 202 585 0847

Seal/Signature

Date

09/21/2017

Project Name

2100
PENNSYLVANIA
AVENUE NW

Project Number

A1613

Description

RENDERING - WEST
WALL

Scale

A-306

COPYRIGHT © 2017

Pelli Clarke Pelli Architects



NIGHT TIME EXTERIOR RENDERING - WEST WALL



NIGHT TIME EXTERIOR RENDERING

2100
PENNSYLVANIA
AVENUE NW
Washington, DC



WDG
1025 Connecticut Ave., NW, Ste. 300
Washington, DC 20036
T 202 857 8300
F 202 463 2198

PCPA
Pelli Clarke Pelli Architects
322 Eighth Avenue, 11th Floor
New York, New York 10001
T 212 417 9496
F 212 417 9497

WMC
WELLS MERRICK CORPORATION, LLC
11860 Sunrise Valley Drive, Ste 200
Reston, VA 20191
T 703 391 7600

Boston Properties
2200 Pennsylvania Ave. NW, Ste. 200W
Washington, DC 20037
T 202 585 0847

Seal/Signature

Date

09/21/2017

Project Name

2100
PENNSYLVANIA
AVENUE NW

Project Number

A1613

Description

NIGHT TIME
EXTERIOR
RENDERING

Scale

A- 307

COPYRIGHT © 2017
Pelli Clarke Pelli Architects

2100
PENNSYLVANIA
AVENUE NW
Washington, DC



THE GEORGE
WASHINGTON
UNIVERSITY
WASHINGTON DC

WDG

1025 Connecticut Ave., NW, Ste. 300
Washington, DC 20036
T 202 857 8300
F 202 463 2198

PCPA

Pelli Clarke Pelli Architects
322 Eighth Avenue, 11th Floor
New York, New York 10001
T 212 417 9496
F 212 417 9497

WMC

11860 Sunrise Valley Drive, Ste 200
Reston, VA 20191
T 703 391 7600

Boston Properties

2200 Pennsylvania Ave. NW, Ste. 200W
Washington, DC 20037
T 202 585 0847

Seal/Signature

Date

09/21/2017

Project Name

2100
PENNSYLVANIA
AVENUE NW

Project Number

A1613

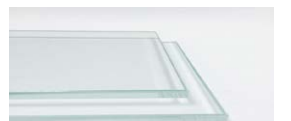
Description

EXTERIOR RENDER-
ING - 21ST AND
PENN AVE W/
Scale

A-308

COPYRIGHT © 2017

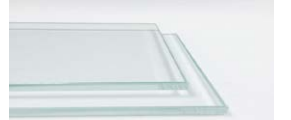
Pelli Clarke Pelli Architects



CLEAR LOW-IRON
VISION GLASS



VISION GLASS WITH FRIT
PATTERN & LOW-E COATING



CLEAR VISION GLASS



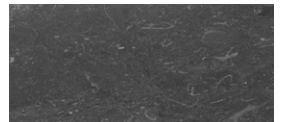
LIGHT TERRACOTTA



METAL



DARK TERRACOTTA






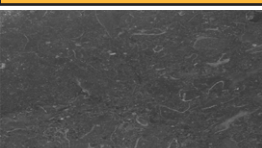


STONE BASE

NOTE: QUANTITY, LOCATION, SWING, AND TYPE OF RETAIL DOORS SUBJECT TO CHANGE UPON TENANT BUILD-OUT. STREETScape DETAILS ARE SHOWN IN CONCEPT FOR ILLUSTRATIVE PURPOSES. THE FINAL DETAIL OF STREETScape IMPROVEMENTS WILL BE SELECTED DURING DETAILED DESIGN PHASES OF WORK AND CONFIRMED WITH APPLICABLE DESIGN AND PERMITTING STANDARDS.

EXTERIOR RENDERING - 21ST AND PENN AVE W/ MATERIALS



-  CLEAR LOW-IRON VISION GLASS
-  LIGHT TERRACOTTA
-  VISION GLASS WITH LOW-E COATING
-  DARK TERRACOTTA
-  METAL
-  STONE BASE

NOTE: SIGNAGE SHOWN FOR ILLUSTRATIVE PURPOSES ONLY. QUANTITY, LOCATION, SWING, AND TYPE OF RETAIL DOORS SUBJECT TO CHANGE UPON TENANT BUILD-OUT. STREETS-CAPE DETAILS ARE SHOWN IN CONCEPT FOR ILLUSTRATIVE PURPOSES. THE FINAL DETAIL OF STREETScape IMPROVEMENTS WILL BE SELECTED DURING DETAILED DESIGN PHASES OF WORK AND CONFIRMED WITH APPLICABLE DESIGN AND PERMITTING STANDARDS.

2100 PENNSYLVANIA AVENUE NW
Washington, DC



WDG
1025 Connecticut Ave., NW, Ste. 300
Washington, DC 20036
T 202 857 8300
F 202 463 2198

PCPA
Pelli Clarke Pelli Architects
322 Eighth Avenue, 11th Floor
New York, New York 10001
T 212 417 9496
F 212 417 9497

WMC
11860 Sunrise Valley Drive, Ste 200
Reston, VA 20191
T 703 391 7600

Boston Properties
2200 Pennsylvania Ave. NW, Ste. 200W
Washington, DC 20037
T 202 585 0847

Seal/Signature

Date

09/21/2017

Project Name

2100 PENNSYLVANIA AVENUE NW

Project Number

A1613

Description

EXTERIOR RENDERING - I STREET RETAIL W/

Scale

A- 309

COPYRIGHT © 2017
Pelli Clarke Pelli Architects

EXTERIOR RENDERING - I STREET RETAIL W/ MATERIALS

2100
PENNSYLVANIA
AVENUE NW
Washington, DC



THE GEORGE
WASHINGTON
UNIVERSITY
WASHINGTON DC

WDG

1025 Connecticut Ave., NW, Ste. 300
Washington, DC 20036
T 202 857 8300
F 202 463 2198

PCPA

Pelli Clarke Pelli Architects
322 Eighth Avenue, 11th Floor
New York, New York 10001
T 212 417 9496
F 212 417 9497

WMC

11860 Sunrise Valley Drive, Ste 200
Reston, VA 20191
T 703 391 7600

Boston Properties

2200 Pennsylvania Ave. NW, Ste. 200W
Washington, DC 20037
T 202 585 0847

Seal/Signature

Date

09/21/2017

Project Name

2100
PENNSYLVANIA
AVENUE NW

Project Number

A1613

Description

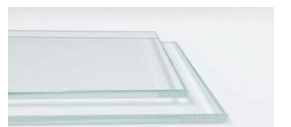
EXTERIOR RENDER-
ING - PENN AVE
RETAIL W/ MATERI-

Scale

A-310

COPYRIGHT © 2017

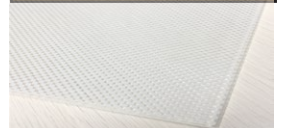
Pelli Clarke Pelli Architects



CLEAR LOW-IRON
VISION GLASS



LIGHT TERRACOTTA



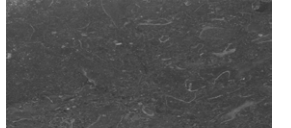
VISION GLASS WITH
LOW-E COATING



DARK TERRACOTTA



METAL



STONE BASE

NOTE: SIGNAGE SHOWN FOR ILLUSTRATIVE PURPOSES ONLY. QUANTITY, LOCATION, SWING, AND TYPE OF RETAIL DOORS SUBJECT TO CHANGE UPON TENANT BUILD-OUT. STREETS-CAPE DETAILS ARE SHOWN IN CONCEPT FOR ILLUSTRATIVE PURPOSES. THE FINAL DETAIL OF STREETScape IMPROVEMENTS WILL BE SELECTED DURING DETAILED DESIGN PHASES OF WORK AND CONFIRMED WITH APPLICABLE DESIGN AND PERMITTING STANDARDS.

EXTERIOR RENDERING - PENN AVE RETAIL W/ MATERIALS

2100
PENNSYLVANIA
AVENUE NW
Washington, DC



WDG
1025 Connecticut Ave., NW, Ste. 300
Washington, DC 20036
T 202 857 8300
F 202 463 2198

PCPA
Pelli Clarke Pelli Architects
322 Eighth Avenue, 11th Floor
New York, New York 10001
T 212 417 9496
F 212 417 9497

WMC
WILSON MESSER CORPORATION, LLC
11860 Sunrise Valley Drive, Ste 200
Reston, VA 20191
T 703 391 7600

Boston Properties
2200 Pennsylvania Ave. NW, Ste. 200W
Washington, DC 20037
T 202 585 0847

Seal/Signature

Date

09/21/2017

Project Name

2100
PENNSYLVANIA
AVENUE NW

Project Number

A1613

Description

Scale

A- 311

2100
PENNSYLVANIA
AVENUE NW
Washington, DC



THE GEORGE
WASHINGTON
UNIVERSITY
WASHINGTON DC

WDG

1025 Connecticut Ave., NW, Ste. 300
Washington, DC 20036
T 202 857 8300
F 202 463 2198

PCPA

Pelli Clarke Pelli Architects
322 Eighth Avenue, 11th Floor
New York, New York 10001
T 212 417 9496
F 212 417 9497

WMC

WELLS BRUSH CORPORATION/DC
11860 Sunrise Valley Drive, Ste 200
Reston, VA 20191
T 703 391 7600

Boston Properties

2200 Pennsylvania Ave. NW, Ste. 200W
Washington, DC 20037
T 202 585 0847

Seal/Signature

Date

09/21/2017

Project Name

2100
PENNSYLVANIA
AVENUE NW

Project Number

A1613

Description

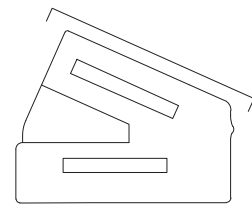
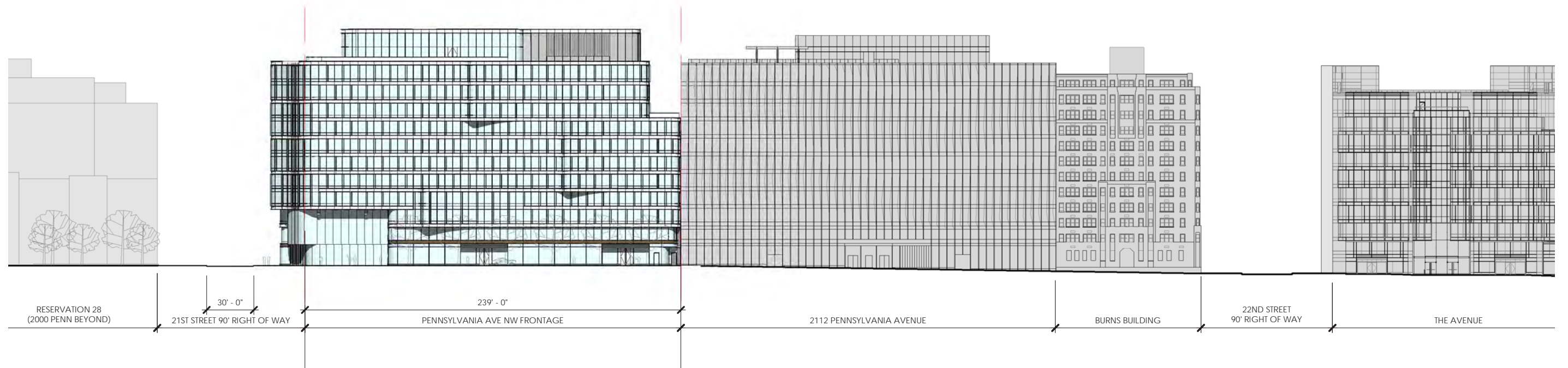
BLOCK ELEVATION
PENN AVE

Scale

A-312

COPYRIGHT © 2017

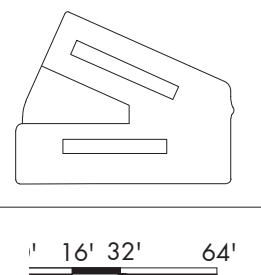
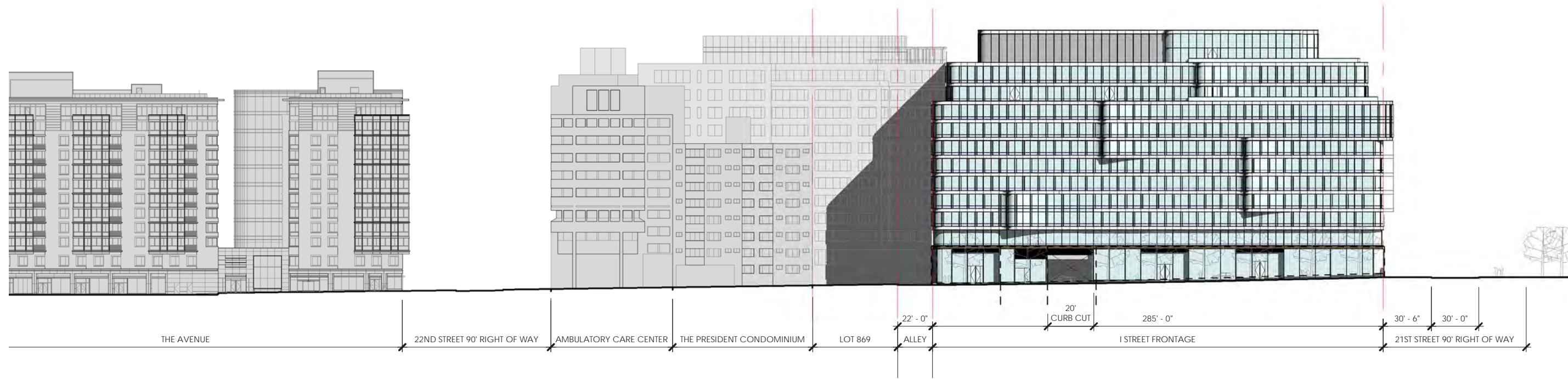
Pelli Clarke Pelli Architects



16' 32' 64'

SCALE: 1/64" = 1'-0"

BLOCK ELEVATIONS -PENNSYLVANIA AVENUE



BLOCK ELEVATIONS - I STREET

SCALE: 1/64" = 1'-0"

2100
PENNSYLVANIA
AVENUE NW
Washington, DC



WDG
1025 Connecticut Ave., NW, Ste. 300
Washington, DC 20036
T 202 857 8300
F 202 463 2198

PCPA
Pelli Clarke Pelli Architects
322 Eighth Avenue, 11th Floor
New York, New York 10001
T 212 417 9496
F 212 417 9497

WMC
WELLS FARGO CORPORATION-DC
11860 Sunrise Valley Drive, Ste 200
Reston, VA 20191
T 703 391 7600

Boston Properties
2200 Pennsylvania Ave. NW, Ste. 200W
Washington, DC 20037
T 202 585 0847

Seal/Signature

Date
09/21/2017

Project Name

2100
PENNSYLVANIA
AVENUE NW

Project Number
A1613

Description
BLOCK ELEVATIONS
- I STREET

Scale

A- 313
COPYRIGHT © 2017
Pelli Clarke Pelli Architects

2100
PENNSYLVANIA
AVENUE NW
Washington, DC



THE GEORGE
WASHINGTON
UNIVERSITY
WASHINGTON DC



1025 Connecticut Ave., NW, Ste. 300
Washington, DC 20036
T 202 857 8300
F 202 463 2198



Pelli Clarke Pelli Architects
322 Eighth Avenue, 11th Floor
New York, New York 10001
T 212 417 9496
F 212 417 9497



11860 Sunrise Valley Drive, Ste 200
Reston, VA 20191
T 703 391 7600



2200 Pennsylvania Ave. NW, Ste. 200W
Washington, DC 20037
T 202 585 0847

Seal/Signature

Date

09/21/2017

Project Name

2100
PENNSYLVANIA
AVENUE NW

Project Number

A1613

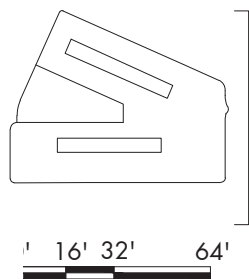
Description

BLOCK ELEVATION
21ST ST

Scale

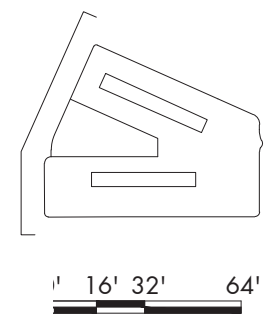
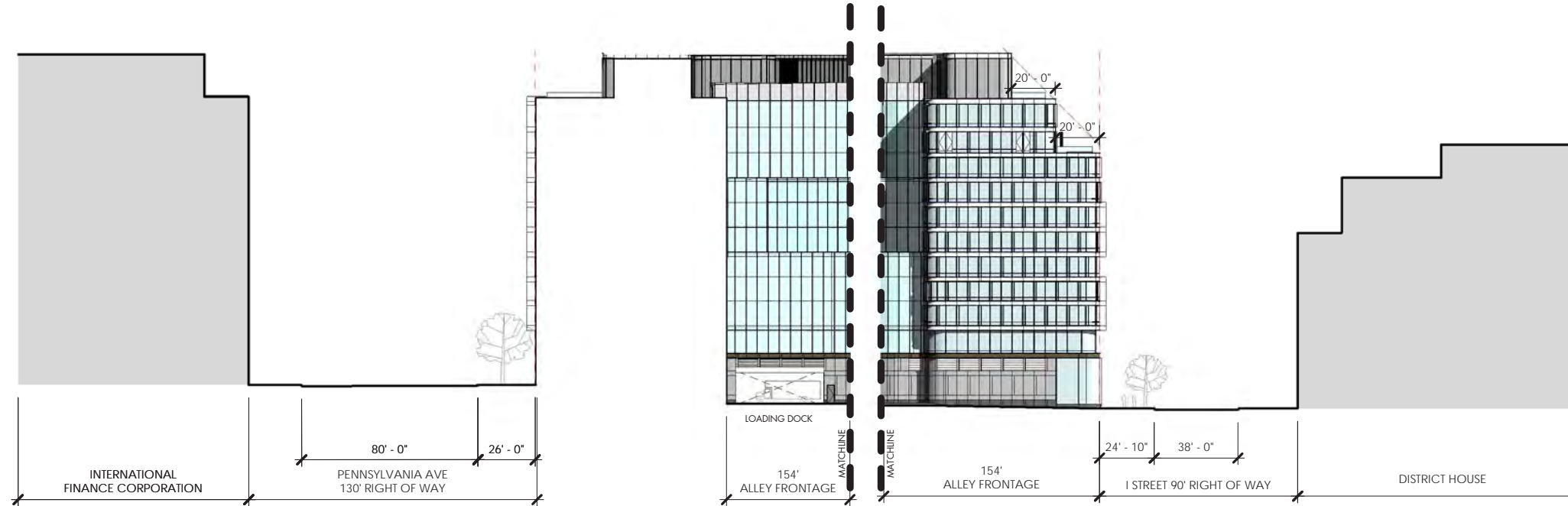
A-314

COPYRIGHT © 2017
Pelli Clarke Pelli Architects



SCALE: 1/64" = 1'-0"

BLOCK ELEVATIONS 21ST STREET



1" = 16' 32' 64'

SCALE: 1/64" = 1'-0"

BLOCK ELEVATIONS ALLEY

2100
PENNSYLVANIA
AVENUE NW
Washington, DC



WDG
1025 Connecticut Ave., NW, Ste. 300
Washington, DC 20036
T 202 857 8300
F 202 463 2198

PCPA
Pelli Clarke Pelli Architects
322 Eighth Avenue, 11th Floor
New York, New York 10001
T 212 417 9496
F 212 417 9497

WMC
WILES MESSER CORPORATION-CC
11860 Sunrise Valley Drive, Ste 200
Reston, VA 20191
T 703 391 7600

Boston Properties
2200 Pennsylvania Ave. NW, Ste. 200W
Washington, DC 20037
T 202 585 0847

Seal/Signature

Date

09/21/2017

Project Name

2100
PENNSYLVANIA
AVENUE NW

Project Number

A1613

Description

BLOCK ELEVATION
ALLEY

Scale

A- 315

COPYRIGHT © 2017
Pelli Clarke Pelli Architects

2100
PENNSYLVANIA
AVENUE NW
Washington, DC



WDG
1025 Connecticut Ave., NW, Ste. 300
Washington, DC 20036
T 202 857 8300
F 202 463 2198

PCPA
Pelli Clarke Pelli Architects
322 Eighth Avenue, 11th Floor
New York, New York 10001
T 212 417 9496
F 212 417 9497

WMC
11860 Sunrise Valley Drive, Ste 200
Reston, VA 20191
T 703 391 7600

Boston Properties
2200 Pennsylvania Ave. NW, Ste. 200W
Washington, DC 20037
T 202 585 0847

Seal/Signature

Date

09/21/2017

Project Name

2100
PENNSYLVANIA
AVENUE NW

Project Number

A1613

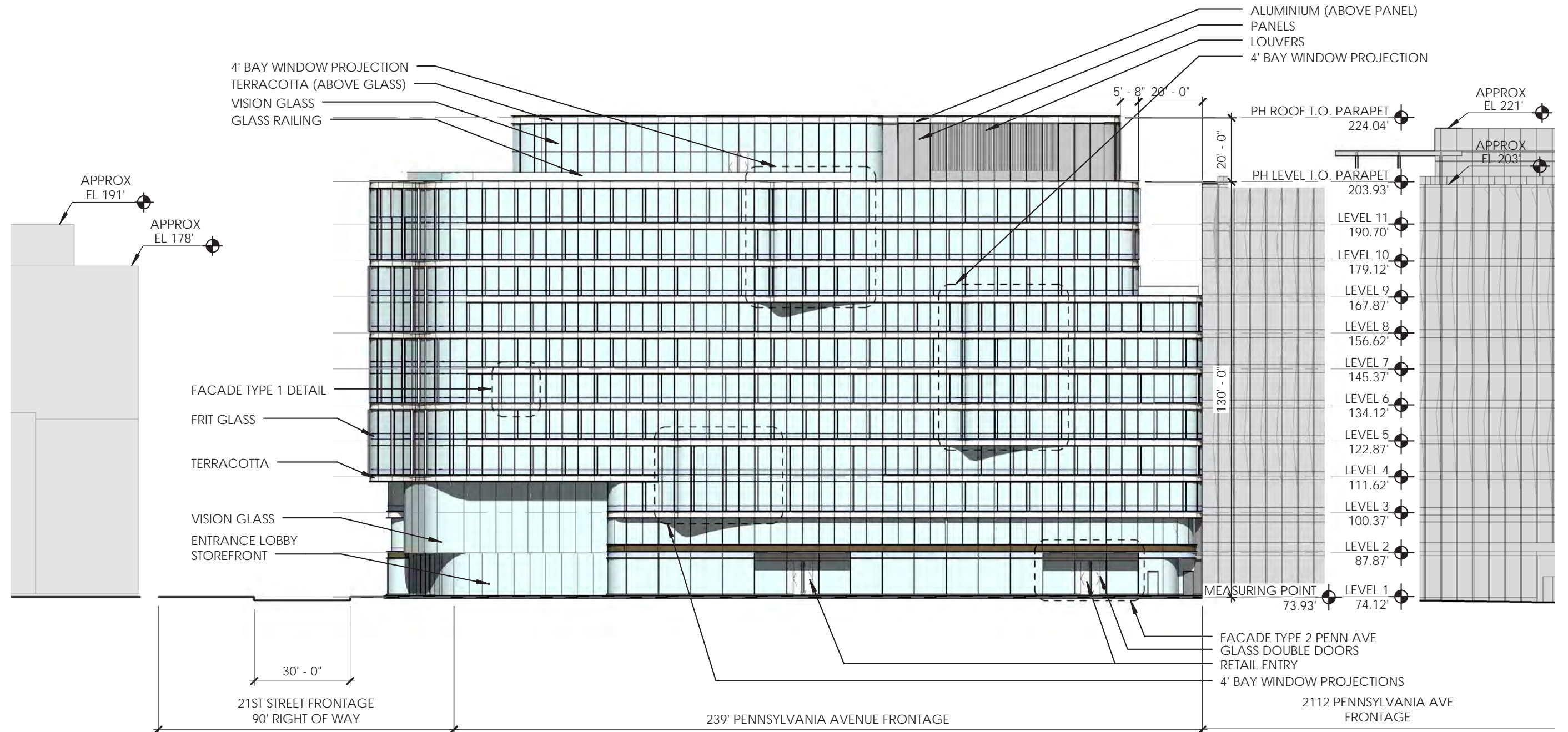
Description

ELEVATION NORTH

Scale

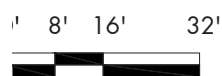
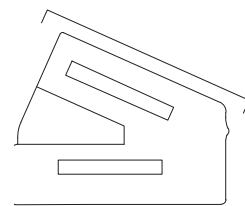
A-316

COPYRIGHT © 2017
Pelli Clarke Pelli Architects



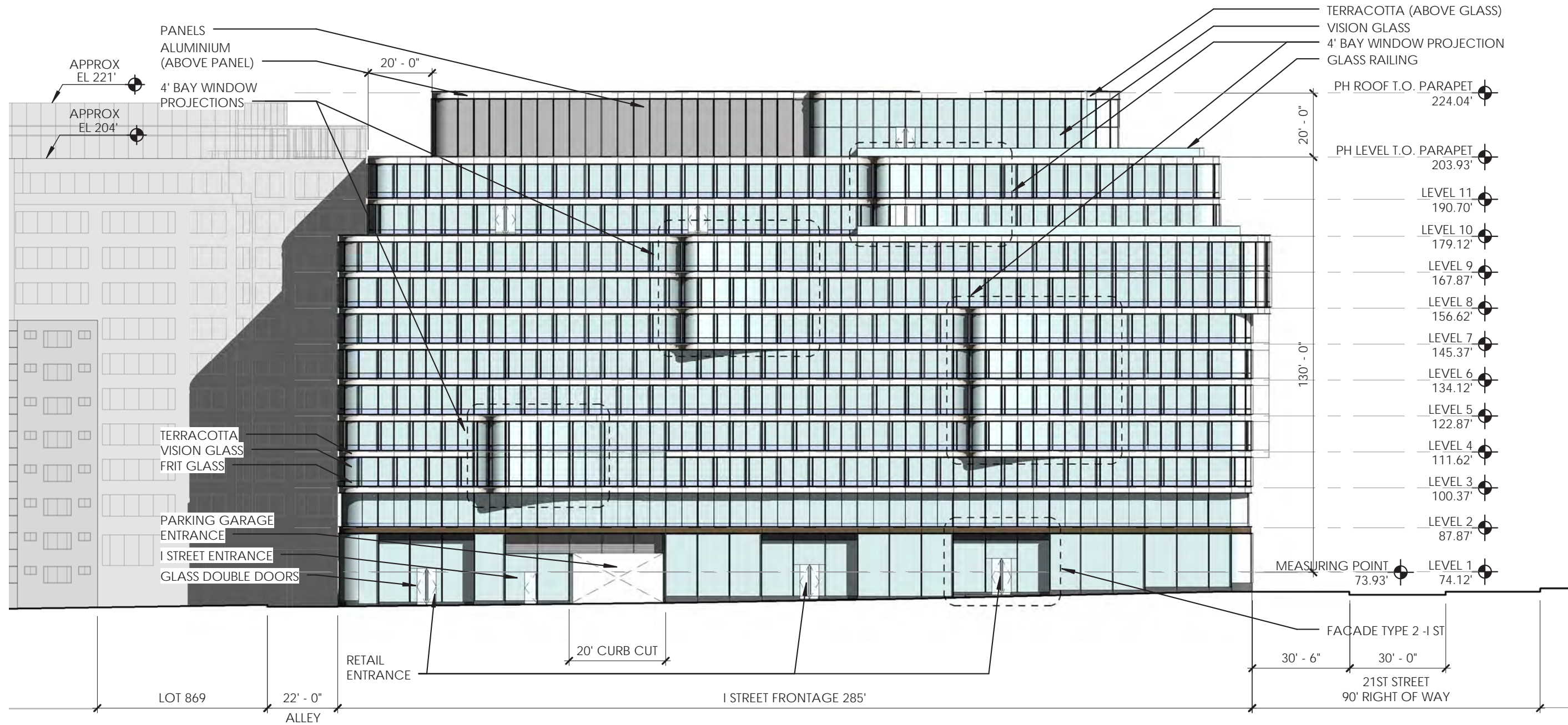
NOTES:

- MATERIAL COLORS ARE REPRESENTATIVE AND REFLECT DESIGN INTENT.
- FLOOR LEVEL ELEVATIONS ARE SUBJECT TO CHANGE DURING FINAL ENGINEERING. OVERALL BUILDING HEIGHTS REPRESENTED SHALL NOT BE EXCEEDED.
- STOREFRONT & SIGNAGE FEATURES TO BE INCORPORATED AS SET FORTH IN THE STOREFRONT AND SIGNAGE GUIDELINES DATED 09/21/17.
- APPLICANT REQUESTS FLEXIBILITY TO VARY THE LOCATION AND NUMBER OF GROUND-FLOOR ENTRANCE DOORS TO MEET TENANT NEEDS IN ACCORDANCE WITH THE STOREFRONT AND SIGNAGE GUIDELINES
- APPLICANT REQUESTS FLEXIBILITY TO VARY THE LOCATION AND NUMBER OF TERRACE AND PENTHOUSE ACCESS DOORS TO MEET TENANT NEEDS
- APPLICANT REQUESTS FLEXIBILITY TO VARY THE ELEVATIONS TO ACCOMMODATE TENANT STOREFRONT AND BUILDING SIGNAGE IN ACCORDANCE WITH THE STOREFRONT AND SIGNAGE GUIDELINES



SCALE: 1/32" = 1'-0"

ELEVATION - NORTH



ELEVATION - SOUTH

NOTES:

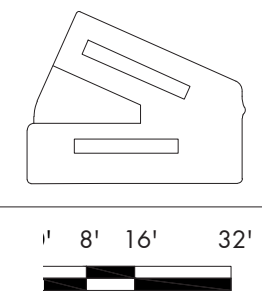
- MATERIAL COLORS ARE REPRESENTATIVE AND REFLECT DESIGN INTENT.
- FLOOR LEVEL ELEVATIONS ARE SUBJECT TO CHANGE DURING FINAL ENGINEERING. OVERALL BUILDING HEIGHTS REPRESENTED SHALL NOT BE EXCEEDED.
- STOREFRONT & SIGNAGE FEATURES TO BE INCORPORATED AS SET FORTH IN THE STOREFRONT AND SIGNAGE GUIDELINES DATED 09/21/17.
- APPLICANT REQUESTS FLEXIBILITY TO VARY THE LOCATION AND NUMBER OF GROUND-FLOOR ENTRANCE DOORS TO MEET TENANT NEEDS IN ACCORDANCE WITH THE STOREFRONT AND SIGNAGE GUIDELINES
- APPLICANT REQUESTS FLEXIBILITY TO VARY THE LOCATION AND NUMBER OF TERRACE AND PENTHOUSE ACCESS DOORS TO MEET TENANT NEEDS
- APPLICANT REQUESTS FLEXIBILITY TO VARY THE ELEVATIONS TO ACCOMMODATE TENANT STOREFRONT AND BUILDING SIGNAGE IN ACCORDANCE WITH THE STOREFRONT AND SIGNAGE GUIDELINES

TERRACOTTA (ABOVE GLASS)
VISION GLASS
4' BAY WINDOW PROJECTION
GLASS RAILING

PH ROOF T.O. PARAPET 224.04'
PH LEVEL T.O. PARAPET 203.93'
LEVEL 11 190.70'
LEVEL 10 179.12'
LEVEL 9 167.87'
LEVEL 8 156.62'
LEVEL 7 145.37'
LEVEL 6 134.12'
LEVEL 5 122.87'
LEVEL 4 111.62'
LEVEL 3 100.37'
LEVEL 2 87.87'

MEASURING POINT 73.93'
LEVEL 1 74.12'

FACADE TYPE 2 - I ST
30' - 6" 30' - 0"
21ST STREET
90' RIGHT OF WAY



2100 PENNSYLVANIA AVENUE NW
Washington, DC



WDG
1025 Connecticut Ave., NW, Ste. 300
Washington, DC 20036
T 202 857 8300
F 202 463 2198

PCPA
Pelli Clarke Pelli Architects
322 Eighth Avenue, 11th Floor
New York, New York 10001
T 212 417 9496
F 212 417 9497

WMC
11860 Sunrise Valley Drive, Ste 200
Reston, VA 20191
T 703 391 7600

Boston Properties
2200 Pennsylvania Ave. NW, Ste. 200W
Washington, DC 20037
T 202 585 0847

Seal/Signature

Date

09/21/2017

Project Name

2100 PENNSYLVANIA AVENUE NW

Project Number

A1613

Description

ELEVATION - SOUTH

Scale

A- 317

COPYRIGHT © 2017
Pelli Clarke Pelli Architects

2100
PENNSYLVANIA
AVENUE NW
Washington, DC



WDG
1025 Connecticut Ave., NW, Ste. 300
Washington, DC 20036
T 202 857 8300
F 202 463 2198

PCPA
Pelli Clarke Pelli Architects
322 Eighth Avenue, 11th Floor
New York, New York 10001
T 212 417 9496
F 212 417 9497

WMC
11860 Sunrise Valley Drive, Ste 200
Reston, VA 20191
T 703 391 7600

Boston Properties
2200 Pennsylvania Ave. NW, Ste. 200W
Washington, DC 20037
T 202 585 0847

Seal/Signature

Date

09/21/2017

Project Name

2100
PENNSYLVANIA
AVENUE NW

Project Number

A1613

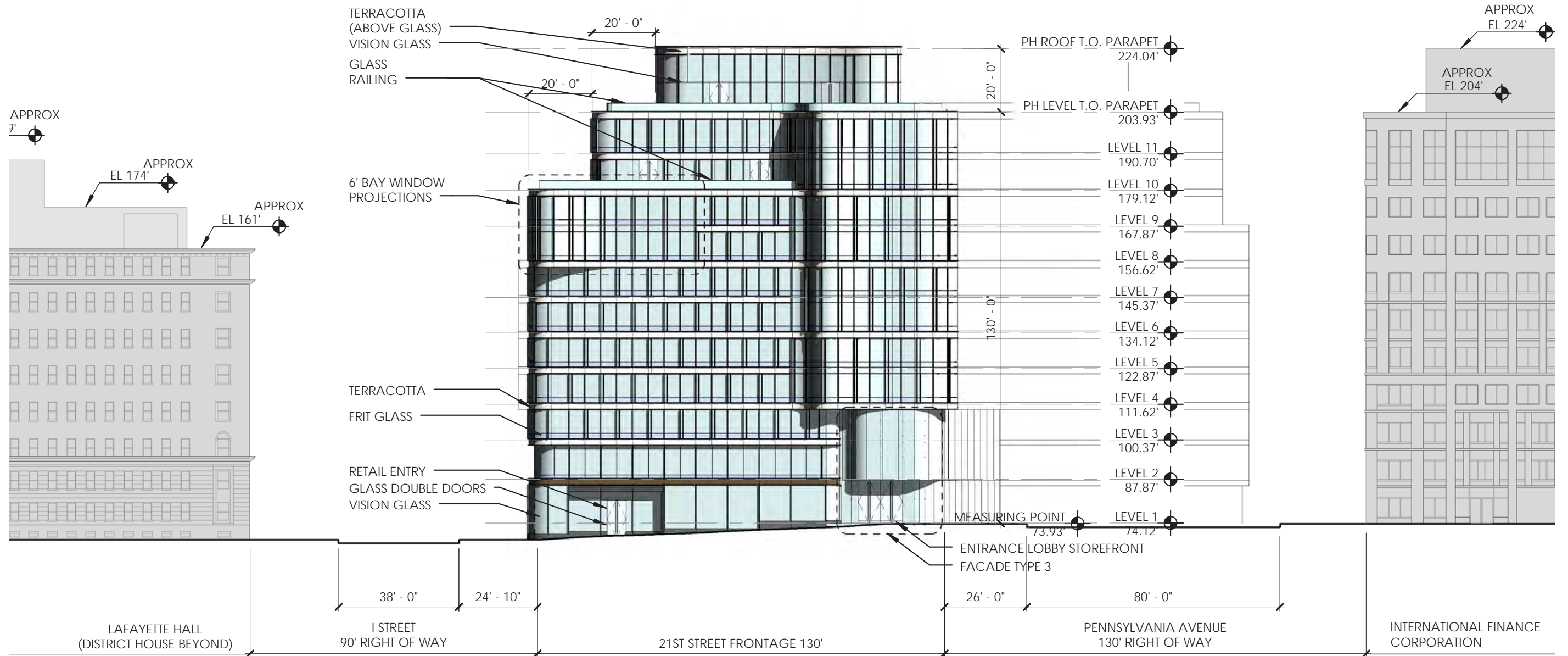
Description

ELEVATION EAST

Scale

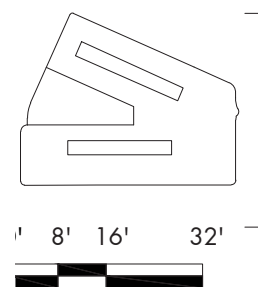
A-318

COPYRIGHT © 2017
Pelli Clarke Pelli Architects



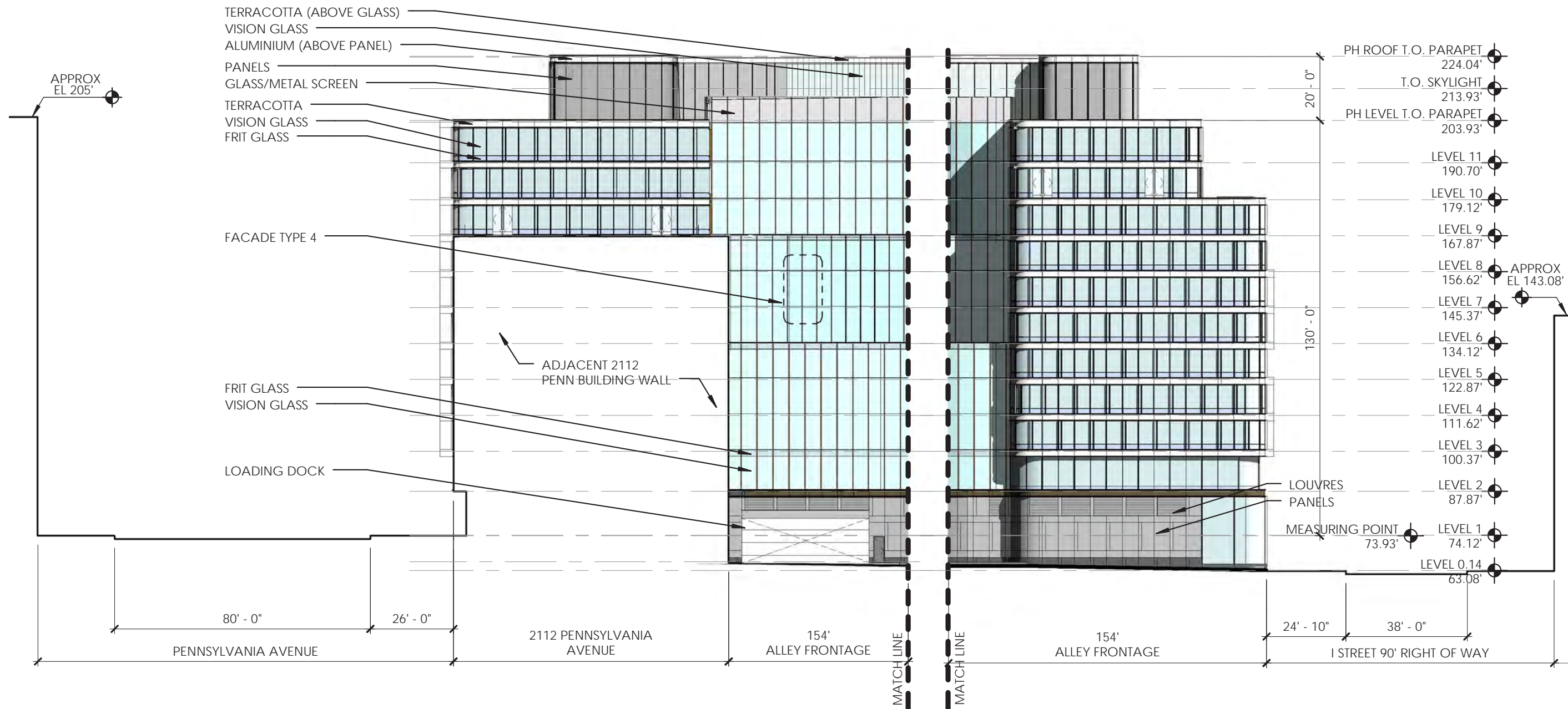
NOTES:

- MATERIAL COLORS ARE REPRESENTATIVE AND REFLECT DESIGN INTENT.
- FLOOR LEVEL ELEVATIONS ARE SUBJECT TO CHANGE DURING FINAL ENGINEERING. OVERALL BUILDING HEIGHTS REPRESENTED SHALL NOT BE EXCEEDED.
- STOREFRONT & SIGNAGE FEATURES TO BE INCORPORATED AS SET FORTH IN THE STOREFRONT AND SIGNAGE GUIDELINES DATED 09/21/17.
- APPLICANT REQUESTS FLEXIBILITY TO VARY THE LOCATION AND NUMBER OF GROUND-FLOOR ENTRANCE DOORS TO MEET TENANT NEEDS IN ACCORDANCE WITH THE STOREFRONT AND SIGNAGE GUIDELINES
- APPLICANT REQUESTS FLEXIBILITY TO VARY THE LOCATION AND NUMBER OF TERRACE AND PENTHOUSE ACCESS DOORS TO MEET TENANT NEEDS
- APPLICANT REQUESTS FLEXIBILITY TO VARY THE ELEVATIONS TO ACCOMMODATE TENANT STOREFRONT AND BUILDING SIGNAGE IN ACCORDANCE WITH THE STOREFRONT AND SIGNAGE GUIDELINES



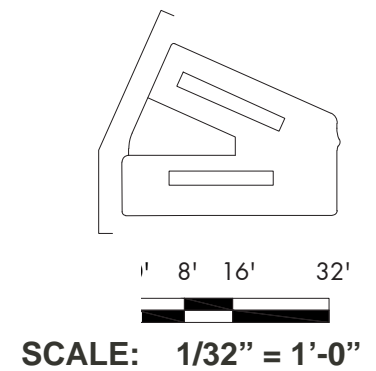
SCALE: 1/32" = 1'-0"

ELEVATION - EAST



ELEVATION - WEST

- NOTES:**
- MATERIAL COLORS ARE REPRESENTATIVE AND REFLECT DESIGN INTENT.
 - FLOOR LEVEL ELEVATIONS ARE SUBJECT TO CHANGE DURING FINAL ENGINEERING. OVERALL BUILDING HEIGHTS REPRESENTED SHALL NOT BE EXCEEDED.
 - STOREFRONT & SIGNAGE FEATURES TO BE INCORPORATED AS SET FORTH IN THE STOREFRONT AND SIGNAGE GUIDELINES DATED 09/21/17.
 - APPLICANT REQUESTS FLEXIBILITY TO VARY THE LOCATION AND NUMBER OF GROUND-FLOOR ENTRANCE DOORS TO MEET TENANT NEEDS IN ACCORDANCE WITH THE STOREFRONT AND SIGNAGE GUIDELINES
 - APPLICANT REQUESTS FLEXIBILITY TO VARY THE LOCATION AND NUMBER OF TERRACE AND PENTHOUSE ACCESS DOORS TO MEET TENANT NEEDS
 - APPLICANT REQUESTS FLEXIBILITY TO VARY THE ELEVATIONS TO ACCOMMODATE TENANT STOREFRONT AND BUILDING SIGNAGE IN ACCORDANCE WITH THE STOREFRONT AND SIGNAGE GUIDELINES



2100
PENNSYLVANIA
AVENUE NW
Washington, DC



WDG
1025 Connecticut Ave., NW, Ste. 300
Washington, DC 20036
T 202 857 8300
F 202 463 2198

PCPA
Pelli Clarke Pelli Architects
322 Eighth Avenue, 11th Floor
New York, New York 10001
T 212 417 9496
F 212 417 9497

WMC
11860 Sunrise Valley Drive, Ste 200
Reston, VA 20191
T 703 391 7600

Boston Properties
2200 Pennsylvania Ave. NW, Ste. 200W
Washington, DC 20037
T 202 585 0847

Seal/Signature

Date

09/21/2017

Project Name

2100
PENNSYLVANIA
AVENUE NW

Project Number

A1613

Description

ELEVATION WEST

Scale

A- 319

COPYRIGHT © 2017
Pelli Clarke Pelli Architects

2100
PENNSYLVANIA
AVENUE NW
Washington, DC



THE GEORGE
WASHINGTON
UNIVERSITY
WASHINGTON DC

WDG

1025 Connecticut Ave., NW, Ste. 300
Washington, DC 20036
T 202 857 8300
F 202 463 2198

PCPA

Pelli Clarke Pelli Architects
322 Eighth Avenue, 11th Floor
New York, New York 10001
T 212 417 9496
F 212 417 9497

WMC

11860 Sunrise Valley Drive, Ste 200
Reston, VA 20191
T 703 391 7600

Boston Properties

2200 Pennsylvania Ave. NW, Ste. 200W
Washington, DC 20037
T 202 585 0847

Seal/Signature

Date

09/21/2017

Project Name

2100
PENNSYLVANIA
AVENUE NW

Project Number

A1613

Description

DETAILS - FACADE
TYPE 1

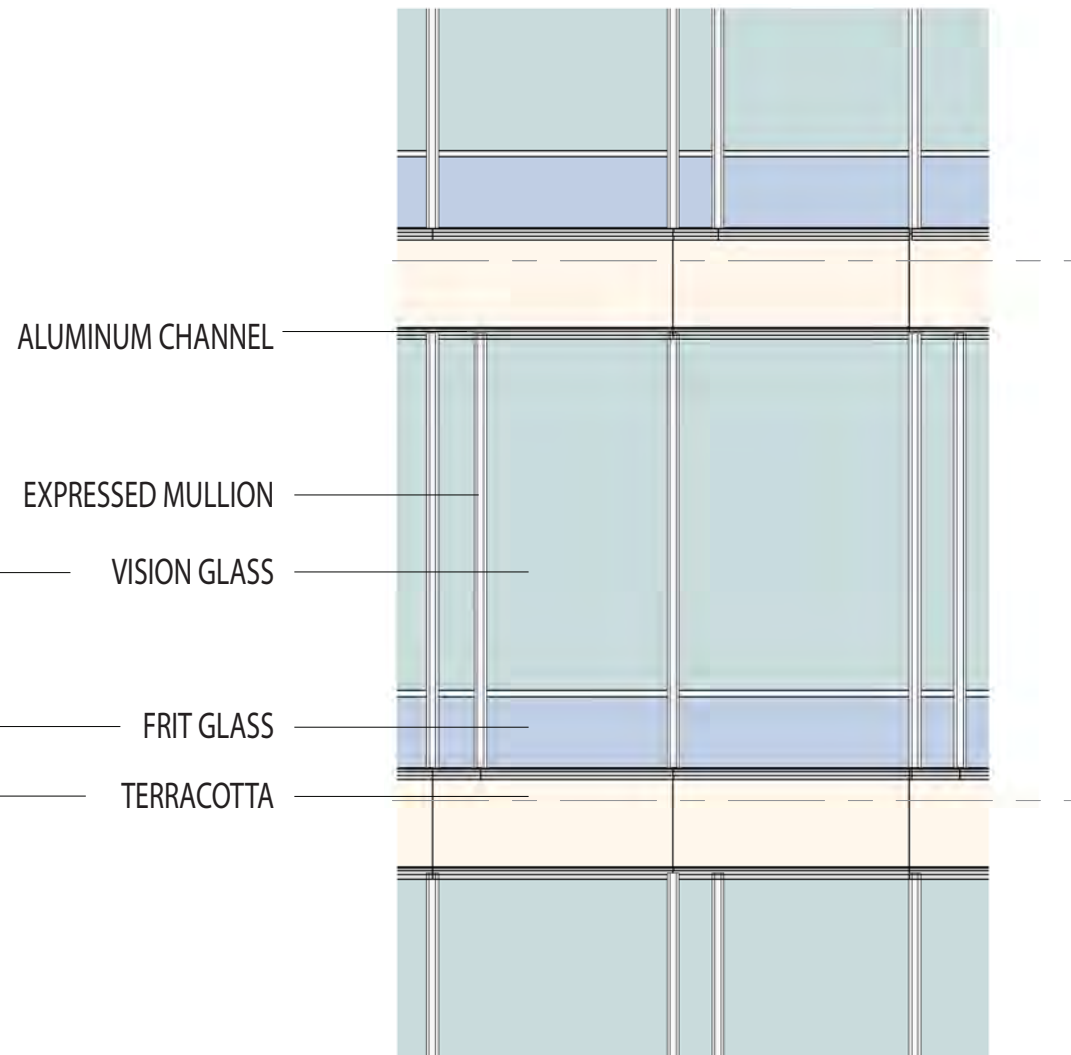
Scale

A-400

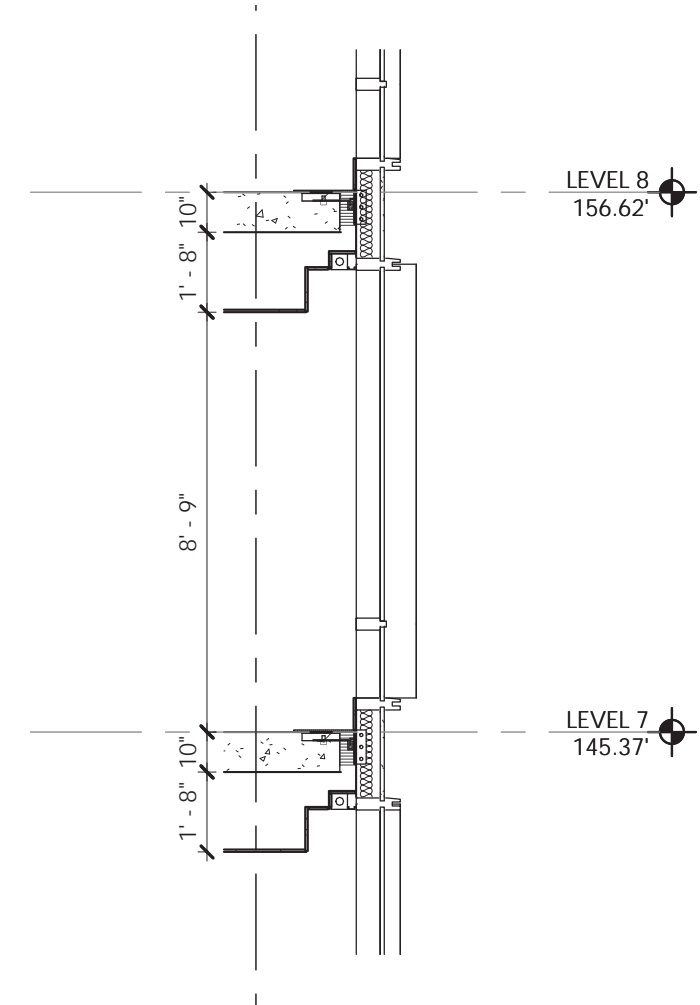
COPYRIGHT © 2017
Pelli Clarke Pelli Architects



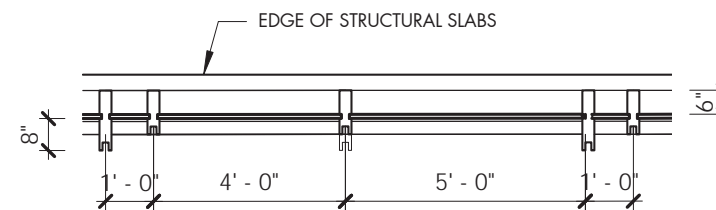
PERSPECTIVE - TYPICAL CURTAIN WALL 1



ELEVATION - TYPICAL CURTAIN WALL
SCALE: 3/16" = 1'-0"



SECTION - TYPICAL CURTAIN WALL
SCALE: 3/16" = 1'-0"



PLAN - TYPICAL CURTAIN WALL
SCALE: 3/16" = 1'-0"

4

FACADE TYPE 1 - MAIN FACADE



FACADE TYPE 1 - MAIN FACADE

2100
PENNSYLVANIA
AVENUE NW
Washington, DC



WDG
1025 Connecticut Ave., NW, Ste. 300
Washington, DC 20036
T 202 857 8300
F 202 463 2198

PCPA
Pelli Clarke Pelli Architects
322 Eighth Avenue, 11th Floor
New York, New York 10001
T 212 417 9496
F 212 417 9497

WMC
WILES WOODS CORPORATION, LLC
11860 Sunrise Valley Drive, Ste 200
Reston, VA 20191
T 703 391 7600

Boston Properties
2200 Pennsylvania Ave. NW, Ste. 200W
Washington, DC 20037
T 202 585 0847

Seal/Signature

Date

09/21/2017

Project Name

2100
PENNSYLVANIA
AVENUE NW

Project Number

A1613

Description

DETAILS -F ACADE
TYPE 1

Scale

A- 401

COPYRIGHT © 2017
Pelli Clarke Pelli Architects

2100
PENNSYLVANIA
AVENUE NW
Washington, DC



THE GEORGE
WASHINGTON
UNIVERSITY
WASHINGTON DC

WDG

1025 Connecticut Ave., NW, Ste. 300
Washington, DC 20036
T 202 857 8300
F 202 463 2198

PCPA

Pelli Clarke Pelli Architects
322 Eighth Avenue, 11th Floor
New York, New York 10001
T 212 417 9496
F 212 417 9497

WMC

11860 Sunrise Valley Drive, Ste 200
Reston, VA 20191
T 703 391 7600

Boston Properties

2200 Pennsylvania Ave. NW, Ste. 200W
Washington, DC 20037
T 202 585 0847

Seal/Signature

Date

09/21/2017

Project Name

2100
PENNSYLVANIA
AVENUE NW

Project Number

A1613

Description

DETAILS -FACADE
TYPE 2 - I STREET

Scale

A-402

COPYRIGHT © 2017
Pelli Clarke Pelli Architects



FRIT GLASS

TERRACOTTA

LOUVERS

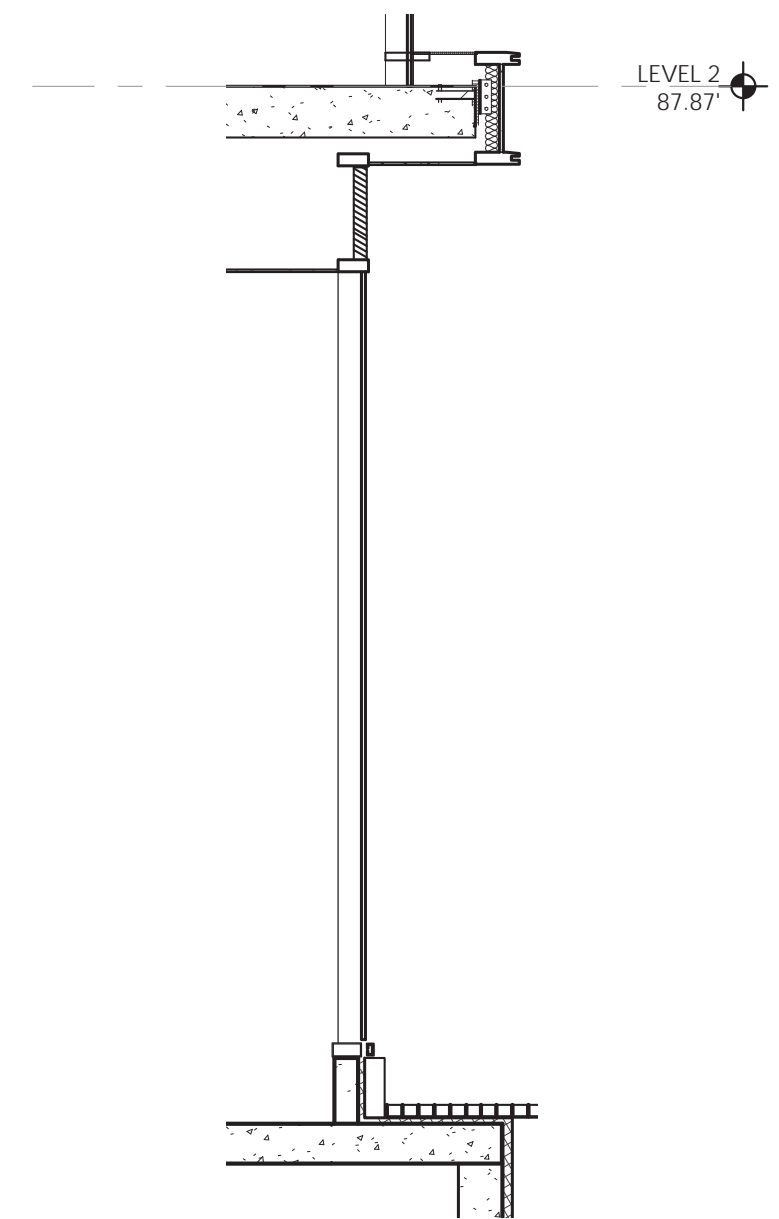
VISION GLASS

EXPRESSED MULLION

STONE

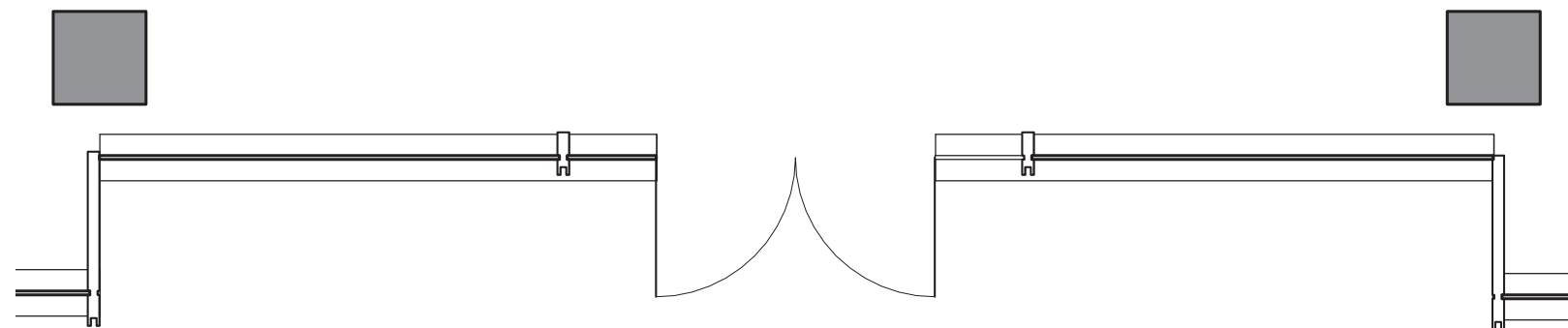
ELEVATION - TYPICAL STOREFRONT
SCALE: 3/16" = 1'-0"

1



SECTION - TYPICAL STOREFRONT
SCALE: 3/16" = 1'-0"

2



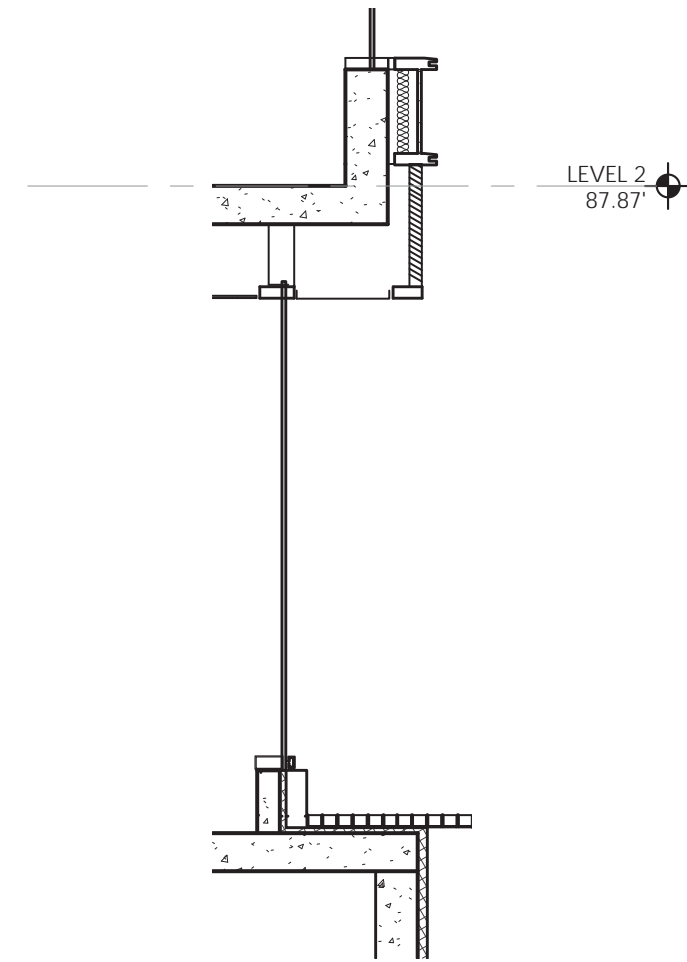
PLAN - TYPICAL STOREFRONT
SCALE: 3/16" = 1'-0"

3

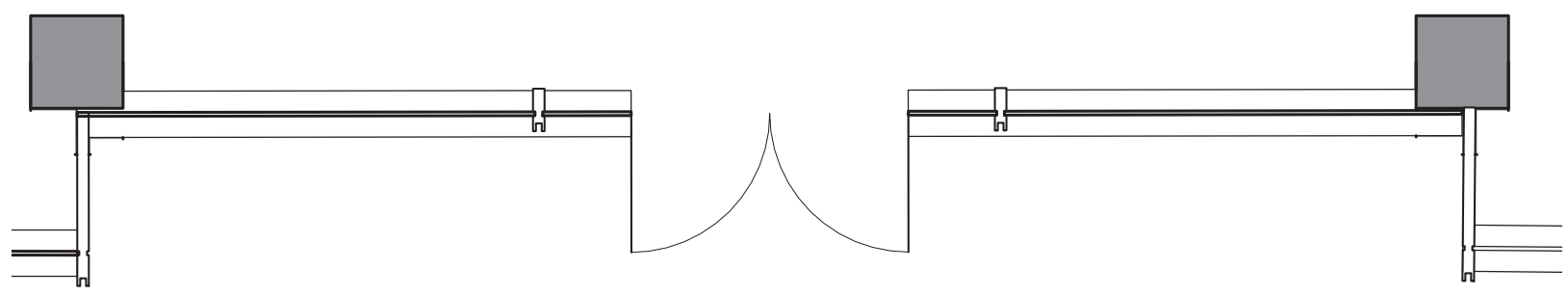
FACADE TYPE 2 - I STREET



ELEVATION - TYPICAL STOREFRONT
SCALE: 3/16" = 1'-0" **1**



SECTION - TYPICAL STOREFRONT
SCALE: 3/16" = 1'-0" **2**



PLAN - TYPICAL STOREFRONT
SCALE: 3/16" = 1'-0" **3**

FACADE TYPE 2 - PENNSYLVANIA AVENUE

2100
PENNSYLVANIA
AVENUE NW
Washington, DC



WDG
1025 Connecticut Ave., NW, Ste. 300
Washington, DC 20036
T 202 857 8300
F 202 463 2198

PCPA
Pelli Clarke Pelli Architects
322 Eighth Avenue, 11th Floor
New York, New York 10001
T 212 417 9496
F 212 417 9497

WMC
WILES WOODS CORPORATION, LLC
11860 Sunrise Valley Drive, Ste 200
Reston, VA 20191
T 703 391 7600

Boston Properties
2200 Pennsylvania Ave. NW, Ste. 200W
Washington, DC 20037
T 202 585 0847

Seal/Signature

Date

09/21/2017

Project Name

2100
PENNSYLVANIA
AVENUE NW

Project Number

A1613

Description

DETAILS - FACADE
TYPE 2 - PENN. AVE.

Scale

A- 403

COPYRIGHT © 2017
Pelli Clarke Pelli Architects

2100
PENNSYLVANIA
AVENUE NW
Washington, DC



THE GEORGE
WASHINGTON
UNIVERSITY
WASHINGTON DC



1025 Connecticut Ave., NW, Ste. 300
Washington, DC 20036
T 202 857 8300
F 202 463 2198



Pelli Clarke Pelli Architects
322 Eighth Avenue, 11th Floor
New York, New York 10001
T 212 417 9496
F 212 417 9497



11860 Sunrise Valley Drive, Ste 200
Reston, VA 20191
T 703 391 7600



2200 Pennsylvania Ave. NW, Ste. 200W
Washington, DC 20037
T 202 585 0847

Seal/Signature

Date

09/21/2017

Project Name

2100
PENNSYLVANIA
AVENUE NW

Project Number

A1613

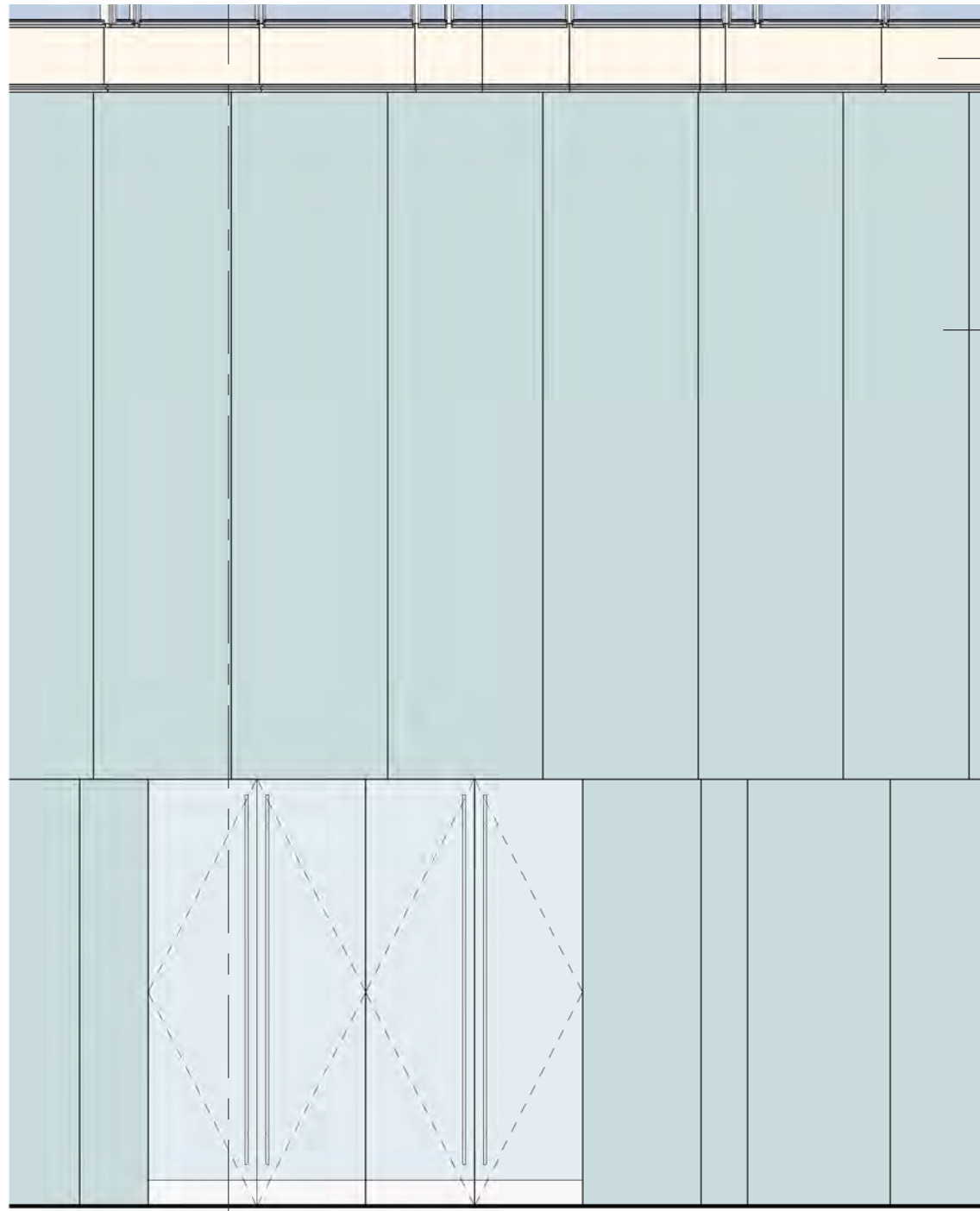
Description

DETAILS - FACDE
TYPE 3

Scale

A-404

COPYRIGHT © 2017
Pelli Clarke Pelli Architects



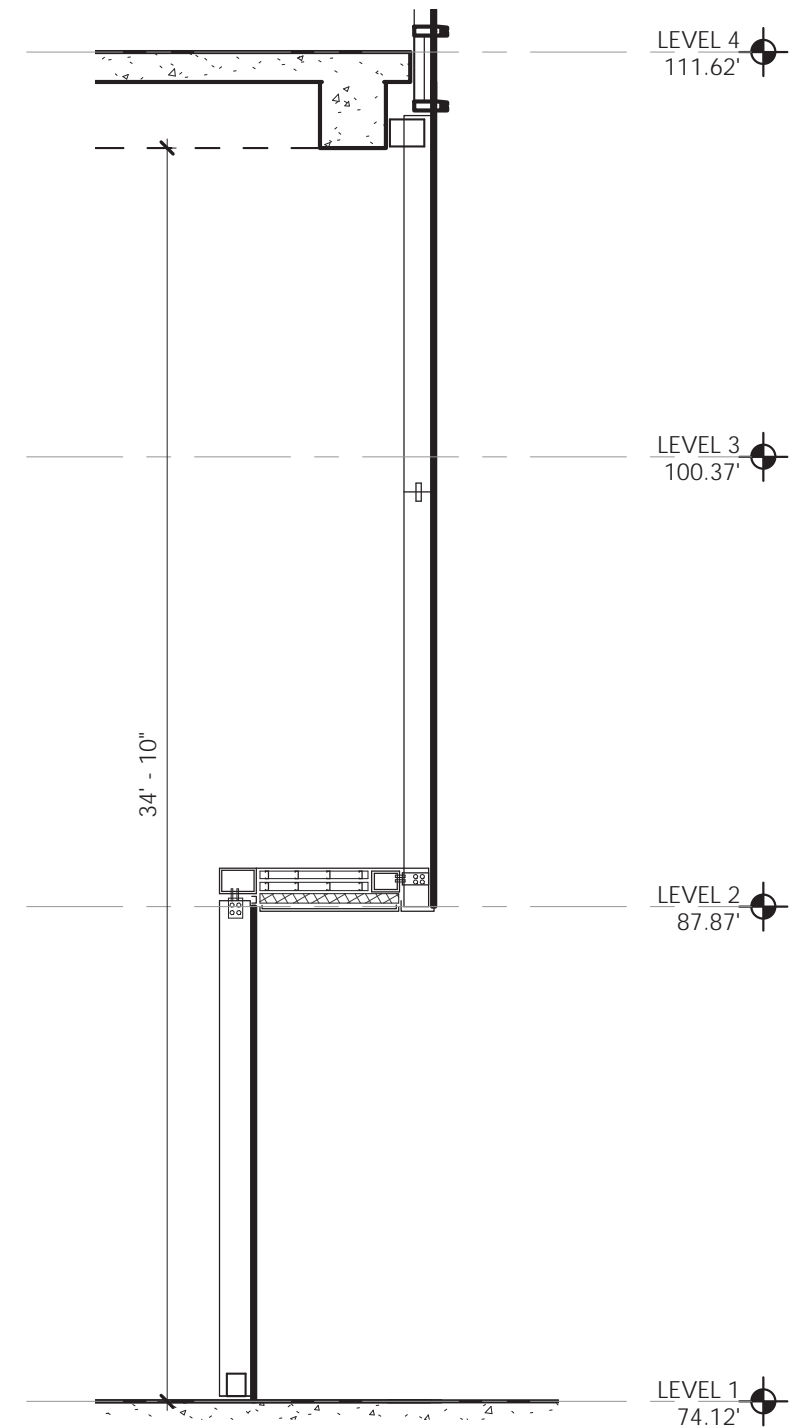
TERRACOTTA

VISION GLASS

ELEVATION - MAIN ENTRANCE

SCALE: 3/16" = 1'-0"

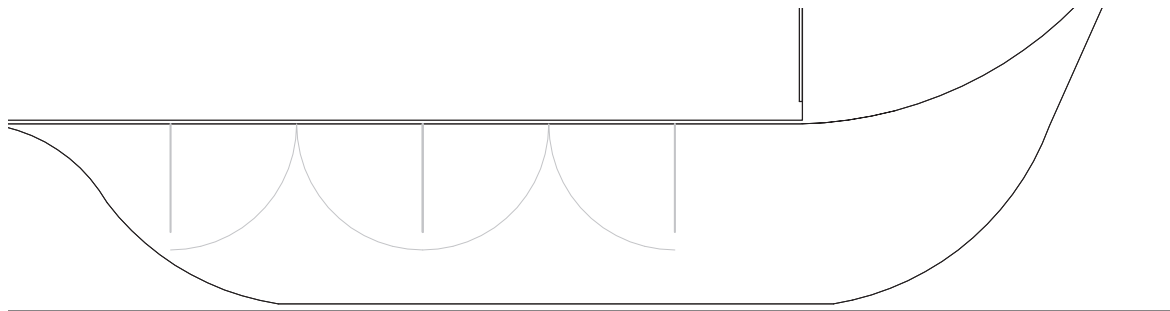
3



SECTION - MAIN ENTRANCE

SCALE: 3/16" = 1'-0"

2

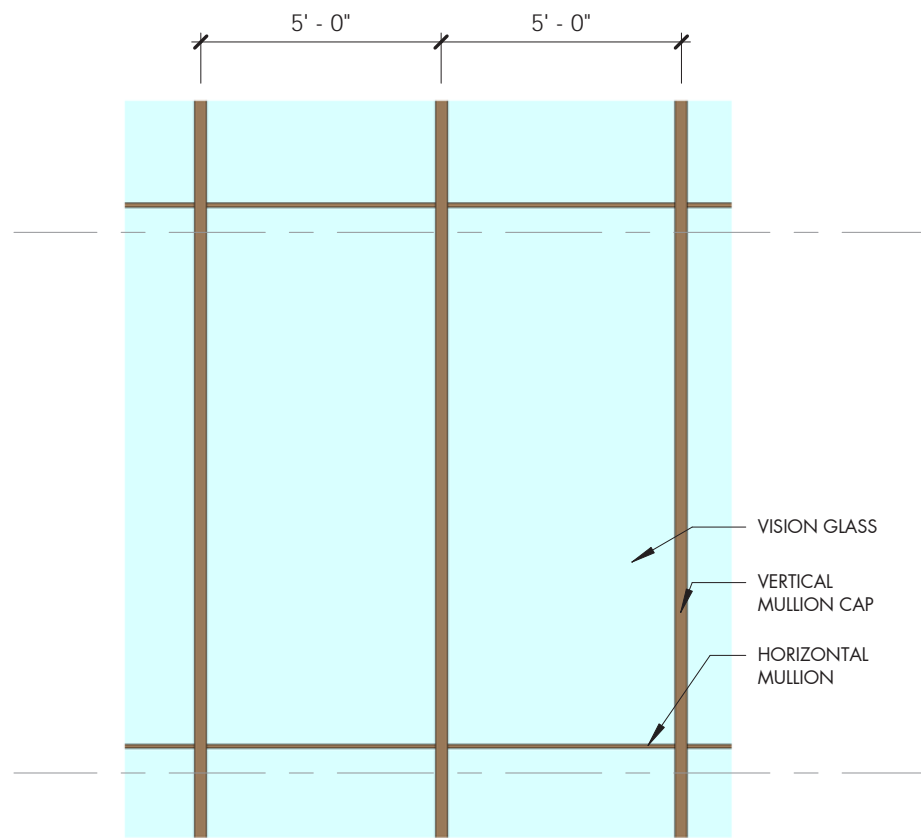


PLAN - MAIN ENTRANCE

SCALE: 3/16" = 1'-0"

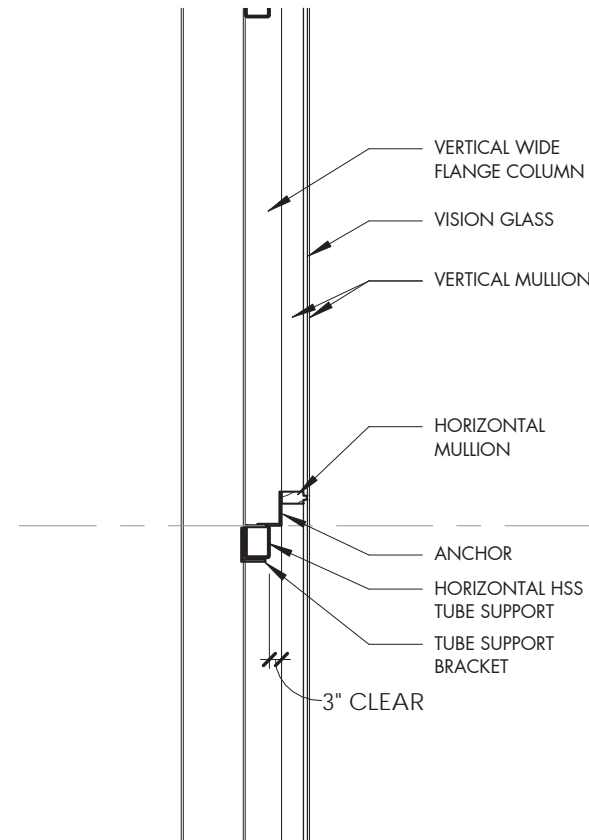
3

FACADE TYPE 3 - MAIN LOBBY



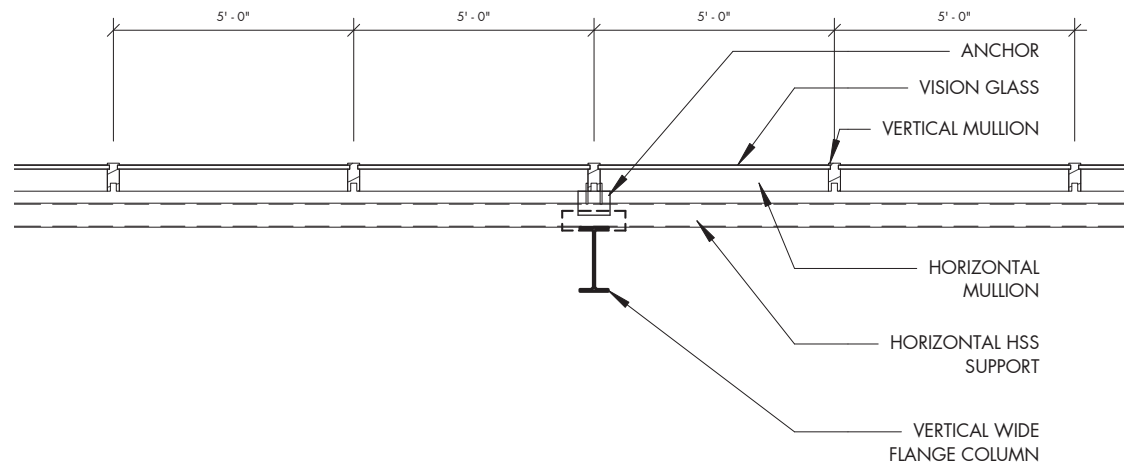
ELEVATION - WEST ATRIUM WALL
SCALE: 3/16" = 1'-0"

1



SECTION - WEST ATRIUM WALL
SCALE: 3/16" = 1'-0"

2



PLAN - WEST ATRIUM WALL
SCALE: 3/16" = 1'-0"

3

FACADE TYPE 4 - WEST ATRIUM WALL

2100
PENNSYLVANIA
AVENUE NW
Washington, DC



WDG
1025 Connecticut Ave., NW, Ste. 300
Washington, DC 20036
T 202 857 8300
F 202 463 2198

PCPA
Pelli Clarke Pelli Architects
322 Eighth Avenue, 11th Floor
New York, New York 10001
T 212 417 9496
F 212 417 9497

WMC
WILES WOODCOCK CORPORATION-DC
11860 Sunrise Valley Drive, Ste 200
Reston, VA 20191
T 703 391 7600

Boston Properties
2200 Pennsylvania Ave. NW, Ste. 200W
Washington, DC 20037
T 202 585 0847

Seal/Signature

Date

09/21/2017

Project Name

2100
PENNSYLVANIA
AVENUE NW

Project Number

A1613

Description

DETAILS - FACADE
TYPE 4

Scale

A- 405

COPYRIGHT © 2017
Pelli Clarke Pelli Architects

2100
PENNSYLVANIA
AVENUE NW
Washington, DC



THE GEORGE
WASHINGTON
UNIVERSITY
WASHINGTON DC

WDG

1025 Connecticut Ave., NW, Ste. 300
Washington, DC 20036
T 202 857 8300
F 202 463 2198

PCPA

Pelli Clarke Pelli Architects
322 Eighth Avenue, 11th Floor
New York, New York 10001
T 212 417 9496
F 212 417 9497

WMC

11860 Sunrise Valley Drive, Ste 200
Reston, VA 20191
T 703 391 7600

Boston Properties

2200 Pennsylvania Ave. NW, Ste. 200W
Washington, DC 20037
T 202 585 0847

Seal/Signature

Date

09/21/2017

Project Name

2100
PENNSYLVANIA
AVENUE NW

Project Number

A1613

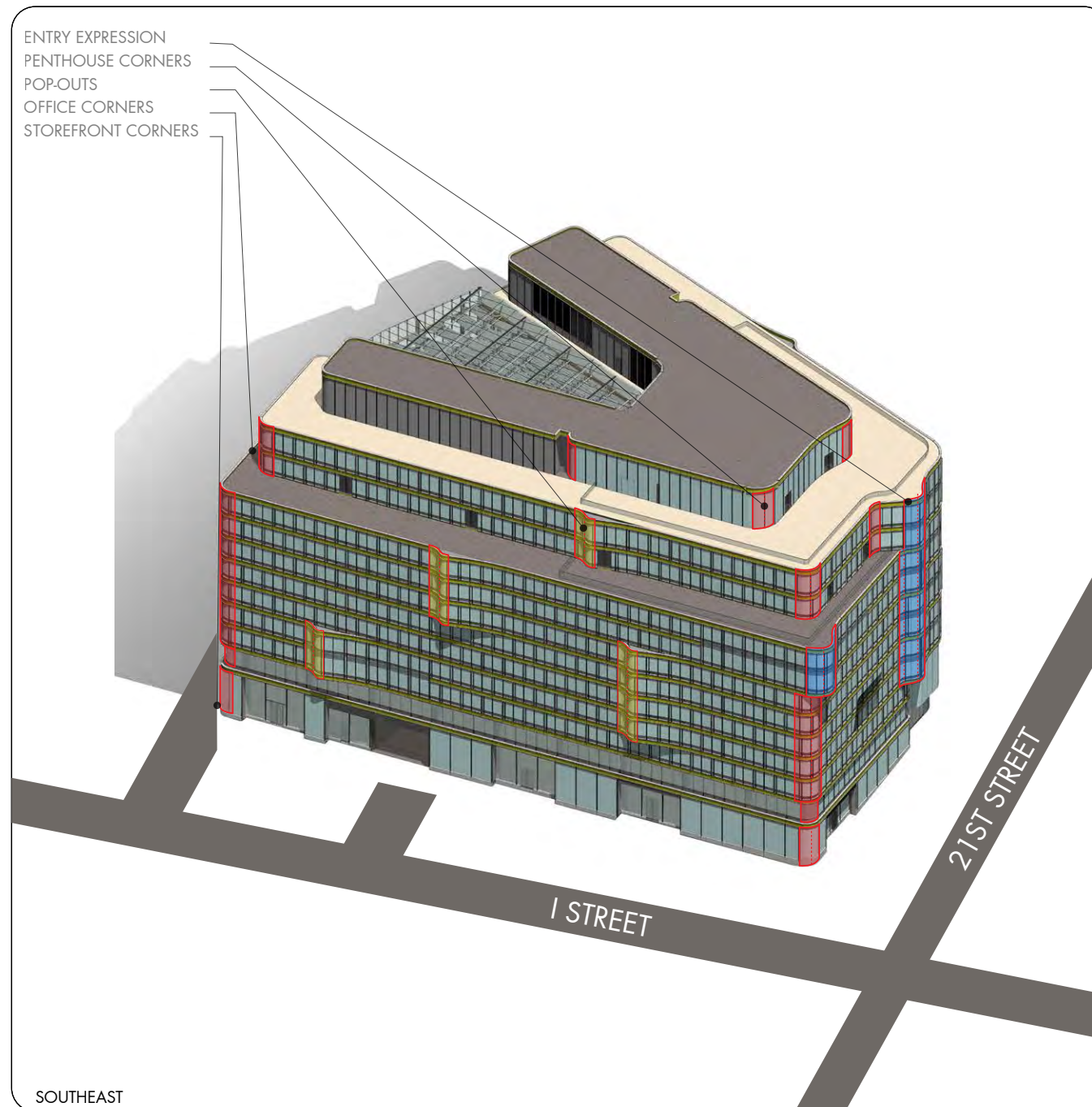
Description

COMMITMENT TO
CURVED GLASS
PAGE 1

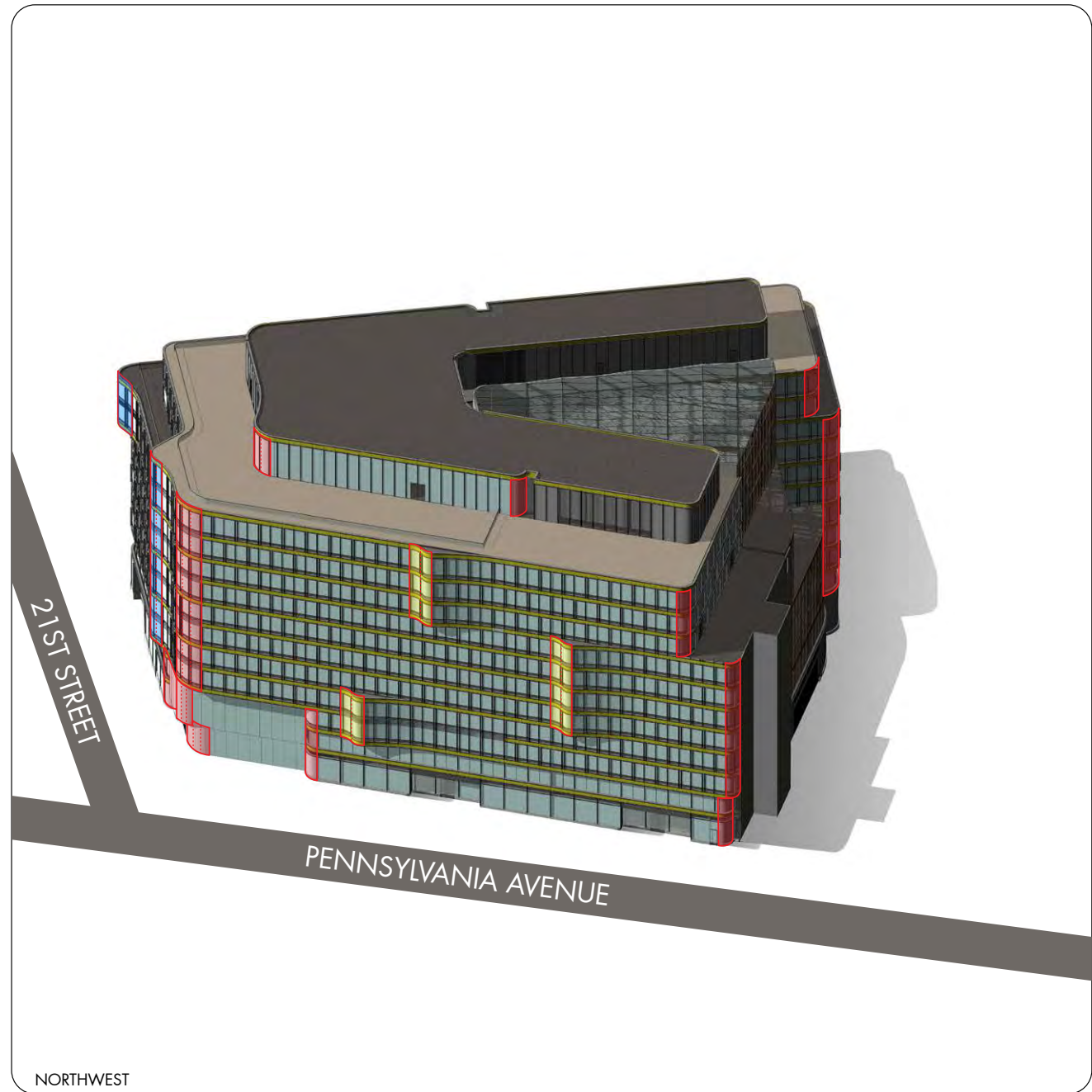
Scale

A-406

COPYRIGHT © 2017
Pelli Clarke Pelli Architects



- REGIONS OF CURVED GLASS - 4FT PROJECTIONS
- REGIONS OF CURVED GLASS - 6FT PROJECTIONS
- REGIONS OF CURVED GLASS - CORNER CONDITIONS



- REGIONS OF CURVED GLASS - 4FT PROJECTIONS
- REGIONS OF CURVED GLASS - 6FT PROJECTIONS
- REGIONS OF CURVED GLASS - CORNER CONDITIONS

2100
PENNSYLVANIA
AVENUE NW
Washington, DC



WDG
1025 Connecticut Ave., NW, Ste. 300
Washington, DC 20036
T 202 857 8300
F 202 463 2198

PCPA
Pelli Clarke Pelli Architects
322 Eighth Avenue, 11th Floor
New York, New York 10001
T 212 417 9496
F 212 417 9497

WMC
WELLS MERRICK CORPORATION, LLC
11860 Sunrise Valley Drive, Ste 200
Reston, VA 20191
T 703 391 7600

Boston Properties
2200 Pennsylvania Ave. NW, Ste. 200W
Washington, DC 20037
T 202 585 0847

Seal/Signature

Date

09/21/2017

Project Name

2100
PENNSYLVANIA
AVENUE NW

Project Number

A1613

Description

COMMITMENT TO
CURVED GLASS
PAGE 2

Scale

A- 407

COPYRIGHT © 2017
Pelli Clarke Pelli Architects