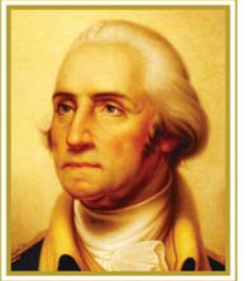


UNIVERSITY YARD ELEVATION

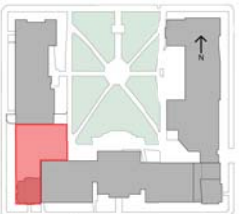


THE GEORGE  
WASHINGTON  
UNIVERSITY  
WASHINGTON DC

The  
George  
Washington  
University  
Museum

HARTMAN-COX  
ARCHITECTS

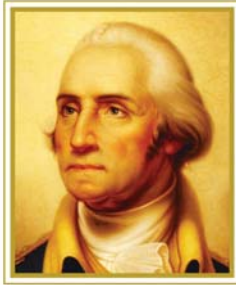
KEY PLAN



DATE  
10/31/2011

TITLE  
Block Elevation

NUMBER  
A-10

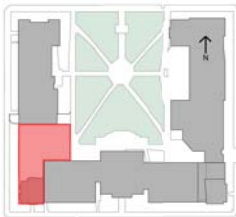


THE GEORGE  
WASHINGTON  
UNIVERSITY  
WASHINGTON DC

The  
George  
Washington  
University  
Museum

HARTMAN-COX  
ARCHITECTS

KEY PLAN



DATE

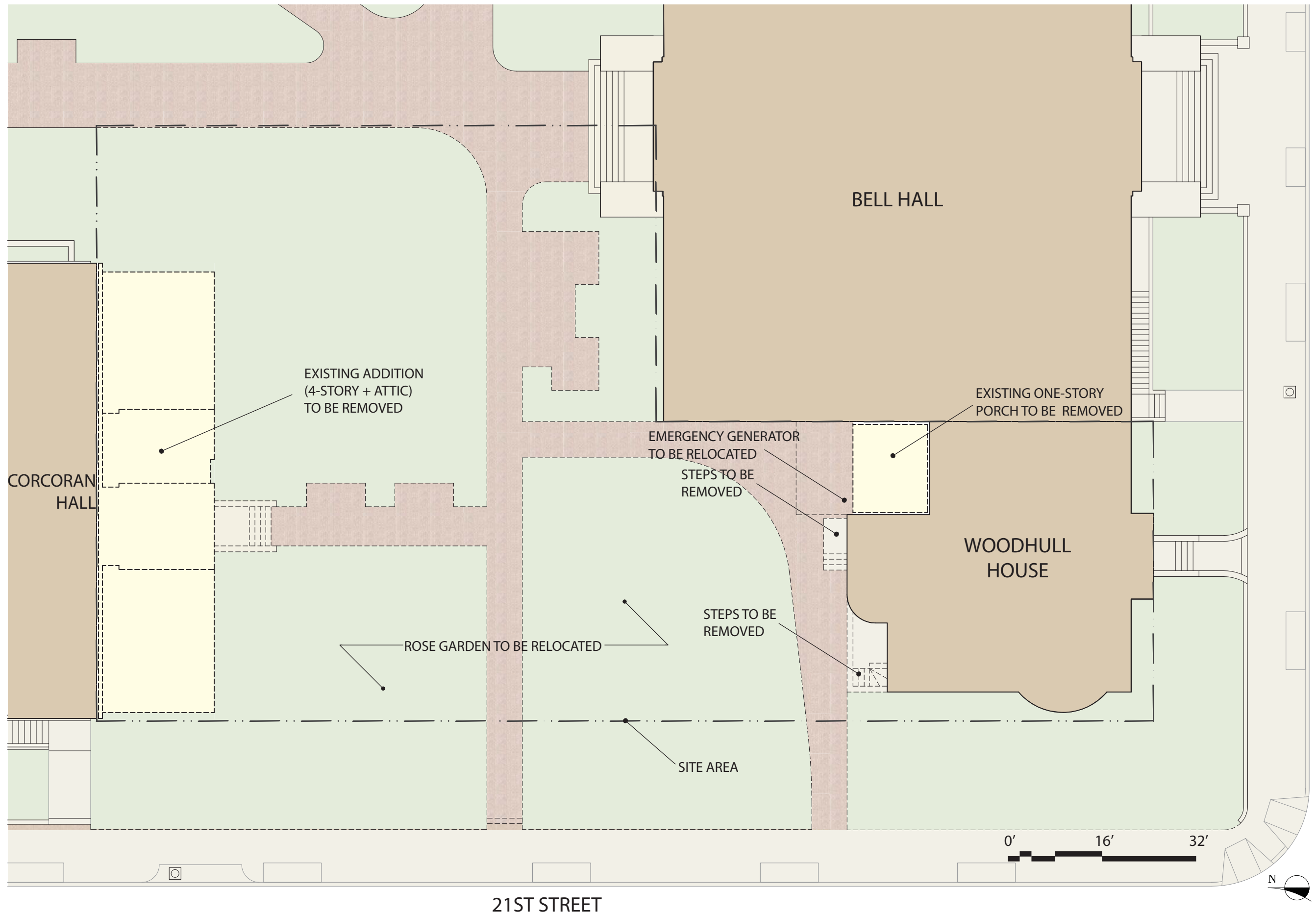
10/31/2011

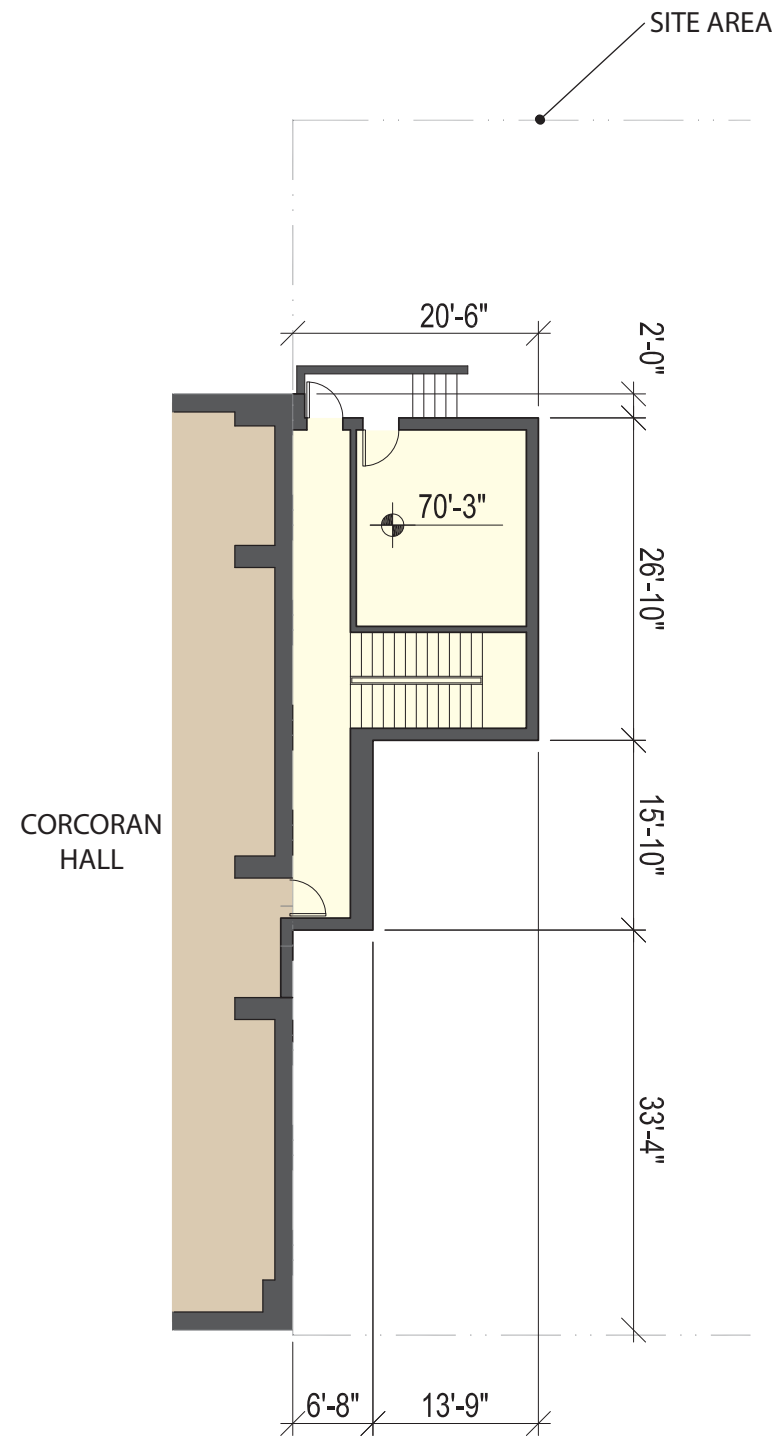
TITLE

Demolition Plan

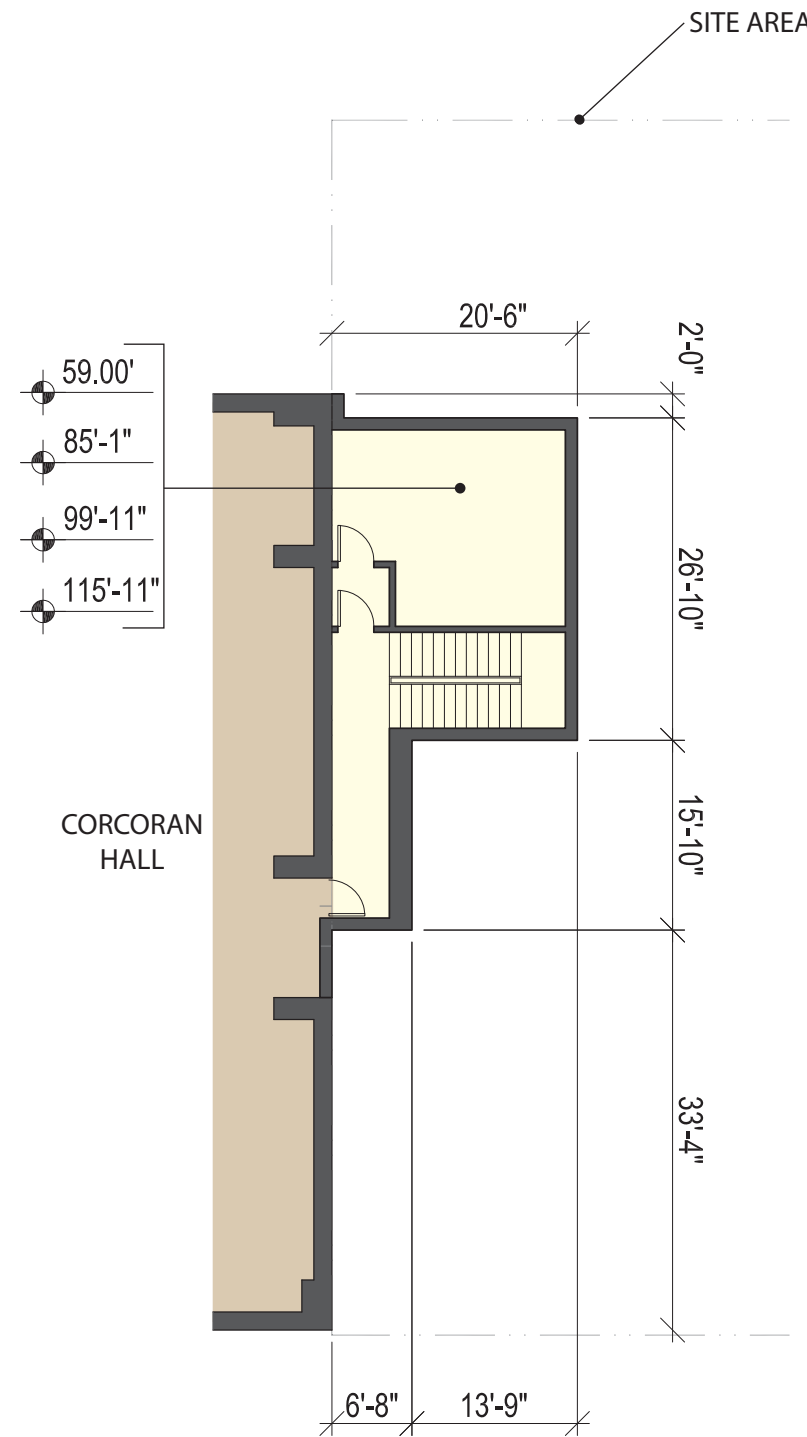
NUMBER

A-11

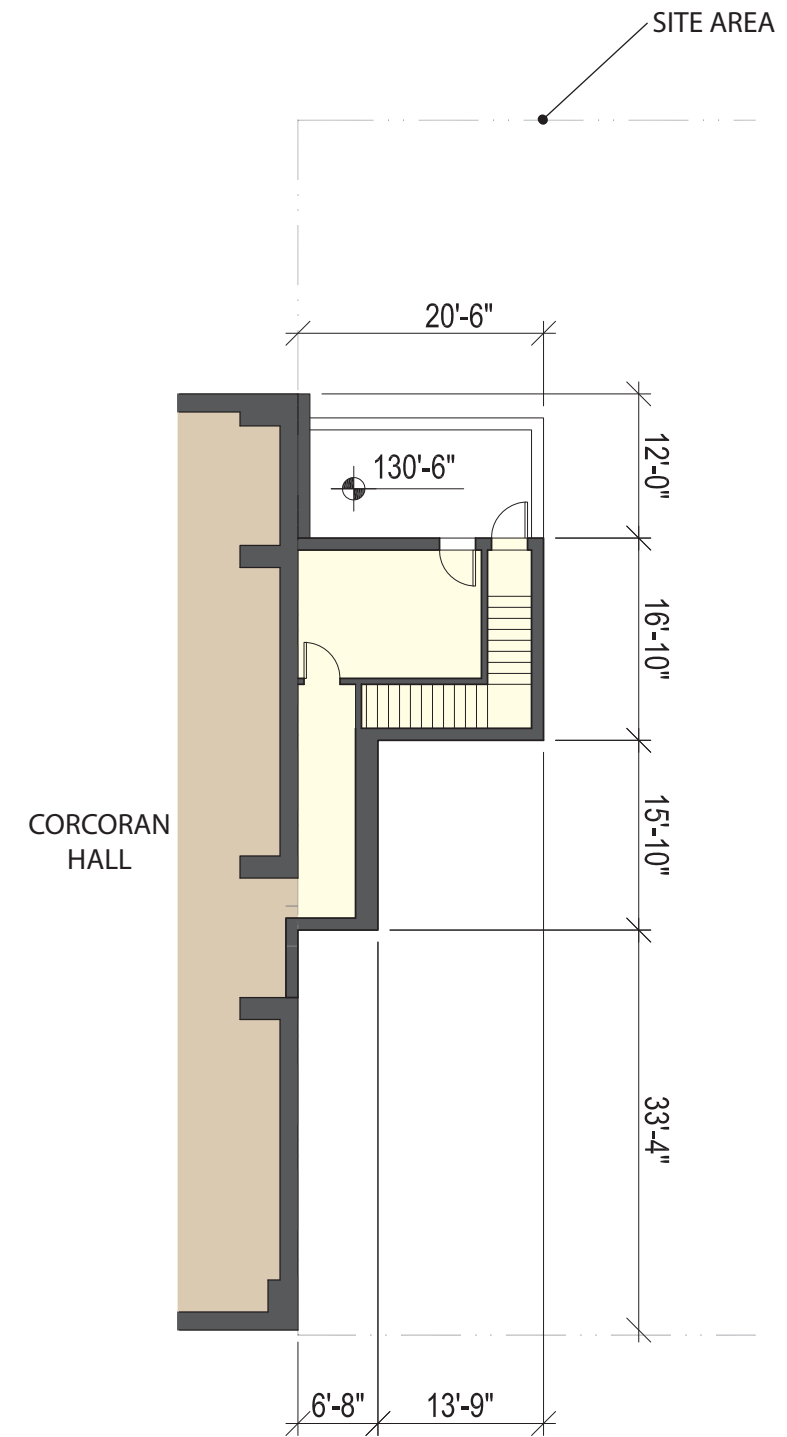




GROUND FLOOR



TYPICAL FLOOR

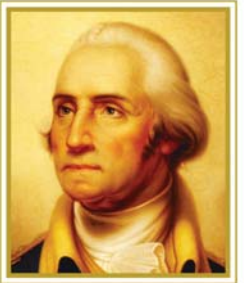


ATTIC LEVEL

NEW CORCORAN HALL ADDITION



NOTE: INTERIOR LAYOUTS ARE ILLUSTRATIVE ONLY AND SUBJECT TO CHANGE ON FINAL PLAN

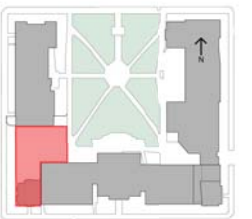


THE GEORGE WASHINGTON UNIVERSITY WASHINGTON DC

The George Washington University Museum

HARTMAN-COX ARCHITECTS

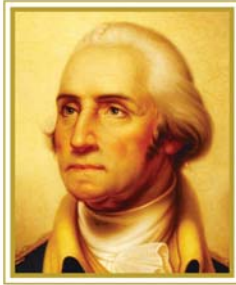
KEY PLAN



DATE 10/31/2011

TITLE Corcoran Hall Addition

NUMBER A-12

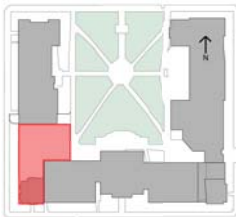


THE GEORGE  
WASHINGTON  
UNIVERSITY  
WASHINGTON DC

The  
George  
Washington  
University  
Museum

HARTMAN-COX  
ARCHITECTS

KEY PLAN



DATE

10/31/2011

TITLE

Corcoran Hall  
Addition Elevation

NUMBER

A-13

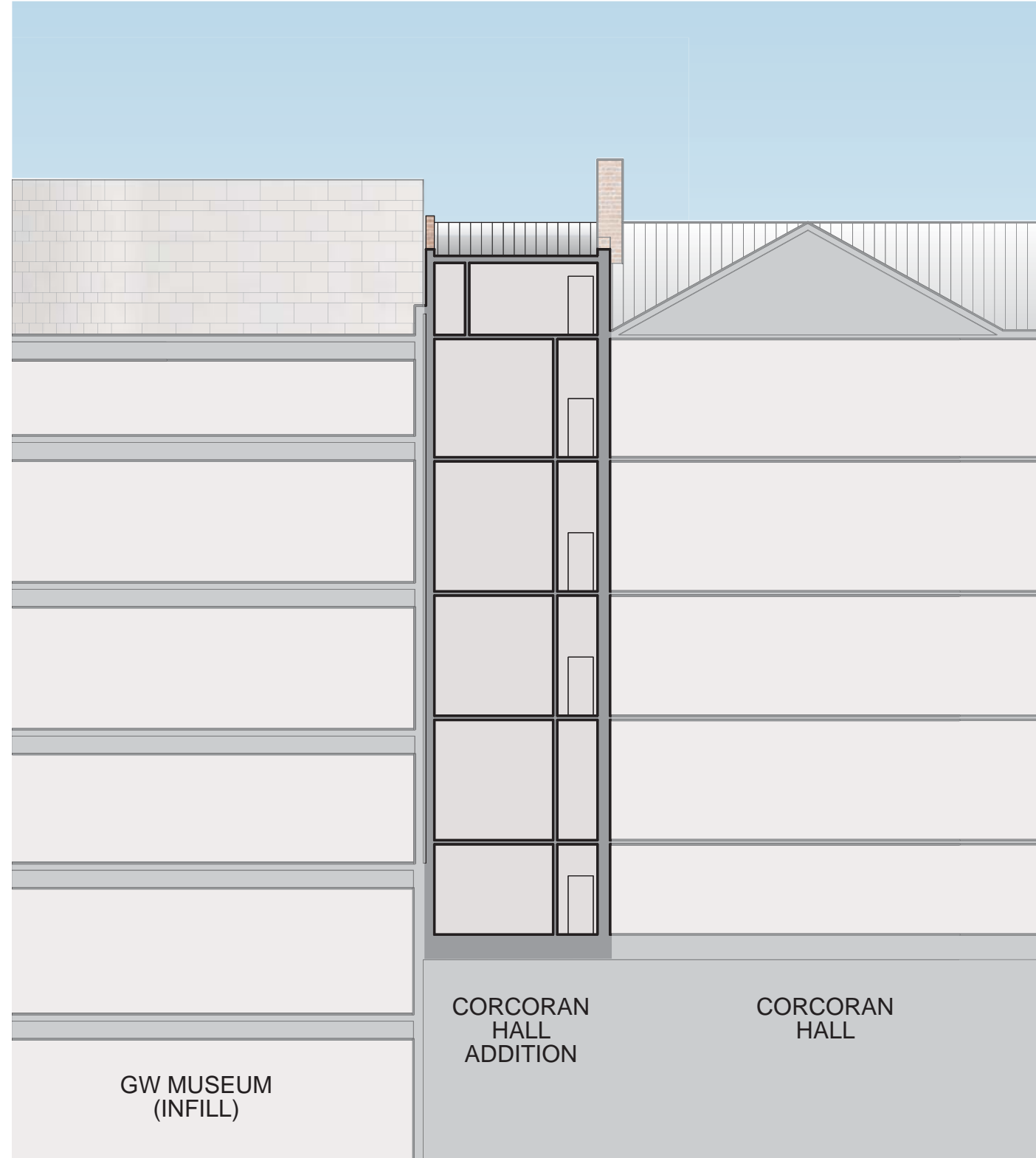


GW MUSEUM  
(INFILL)

CORCORAN  
HALL  
ADDITION

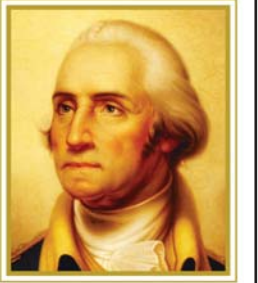
CORCORAN  
HALL

0' 16' 32'



0' 16' 32'

NOTE: INTERIOR LAYOUTS ARE ILLUSTRATIVE ONLY AND SUBJECT TO CHANGE ON FINAL PLAN



THE GEORGE  
WASHINGTON  
UNIVERSITY  
WASHINGTON DC

The  
George  
Washington  
University  
Museum

HARTMAN-COX  
ARCHITECTS

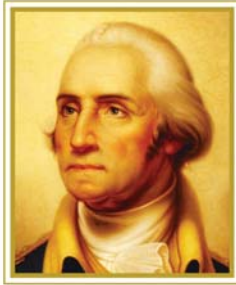
KEY PLAN



DATE  
10/31/2011

TITLE  
Corcoran Hall  
Addition Section

NUMBER  
A-14

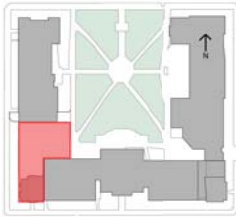


THE GEORGE  
WASHINGTON  
UNIVERSITY  
WASHINGTON DC

The  
George  
Washington  
University  
Museum

HARTMAN-COX  
ARCHITECTS

KEY PLAN



DATE

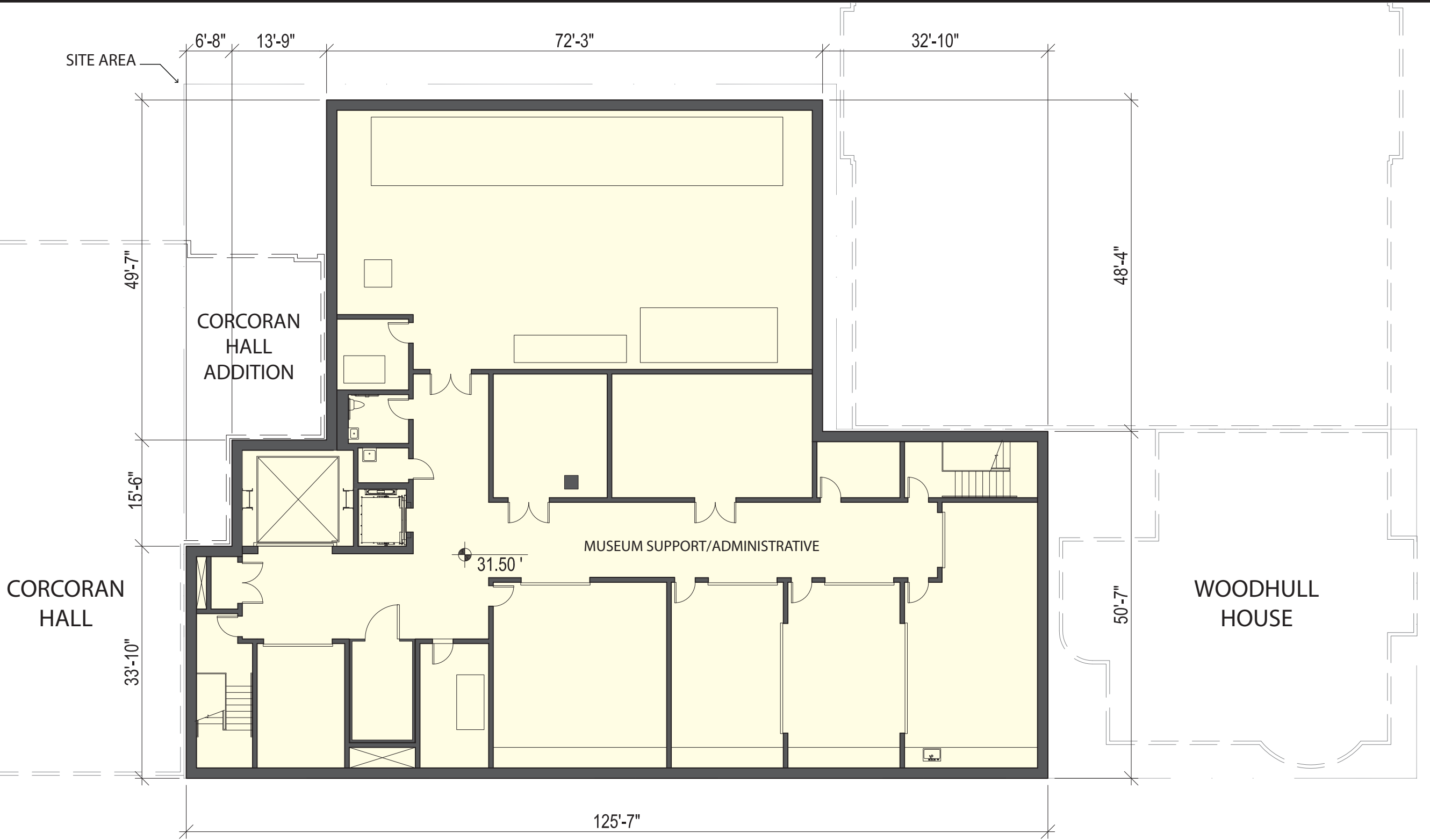
10/31/2011

TITLE

Level B2 Plan

NUMBER

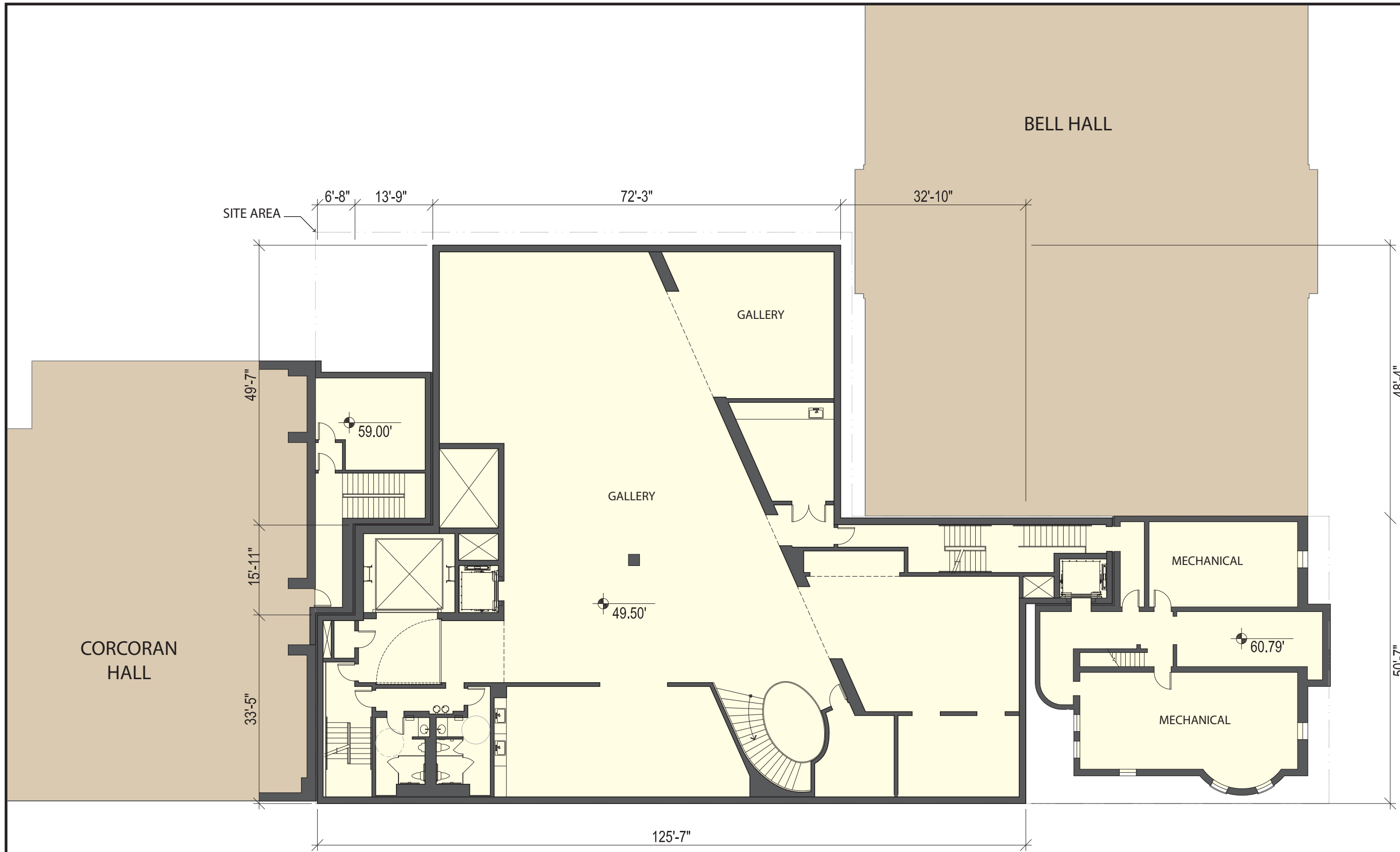
A-15



LEVEL B2 PLAN



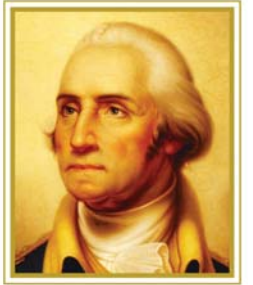
NOTE: INTERIOR LAYOUTS ARE ILLUSTRATIVE ONLY  
AND SUBJECT TO CHANGE ON FINAL PLAN



LEVEL B1 PLAN



NOTE: INTERIOR LAYOUTS ARE ILLUSTRATIVE ONLY AND SUBJECT TO CHANGE ON FINAL PLAN



THE GEORGE  
WASHINGTON  
UNIVERSITY  
WASHINGTON DC

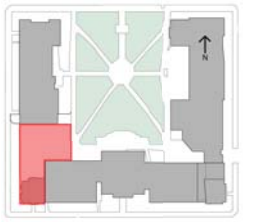
The  
George  
Washington  
University  
Museum

HARTMAN-COX  
ARCHITECTS

48'-4"

50'-7"

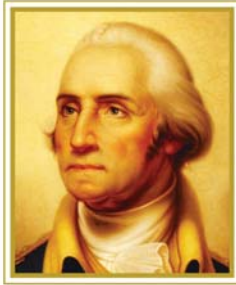
KEY PLAN



DATE  
10/31/2011

TITLE  
Level B1 Plan

NUMBER  
A-16

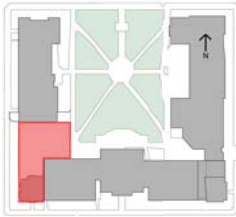


THE GEORGE  
WASHINGTON  
UNIVERSITY  
WASHINGTON DC

The  
George  
Washington  
University  
Museum

HARTMAN-COX  
ARCHITECTS

KEY PLAN



DATE

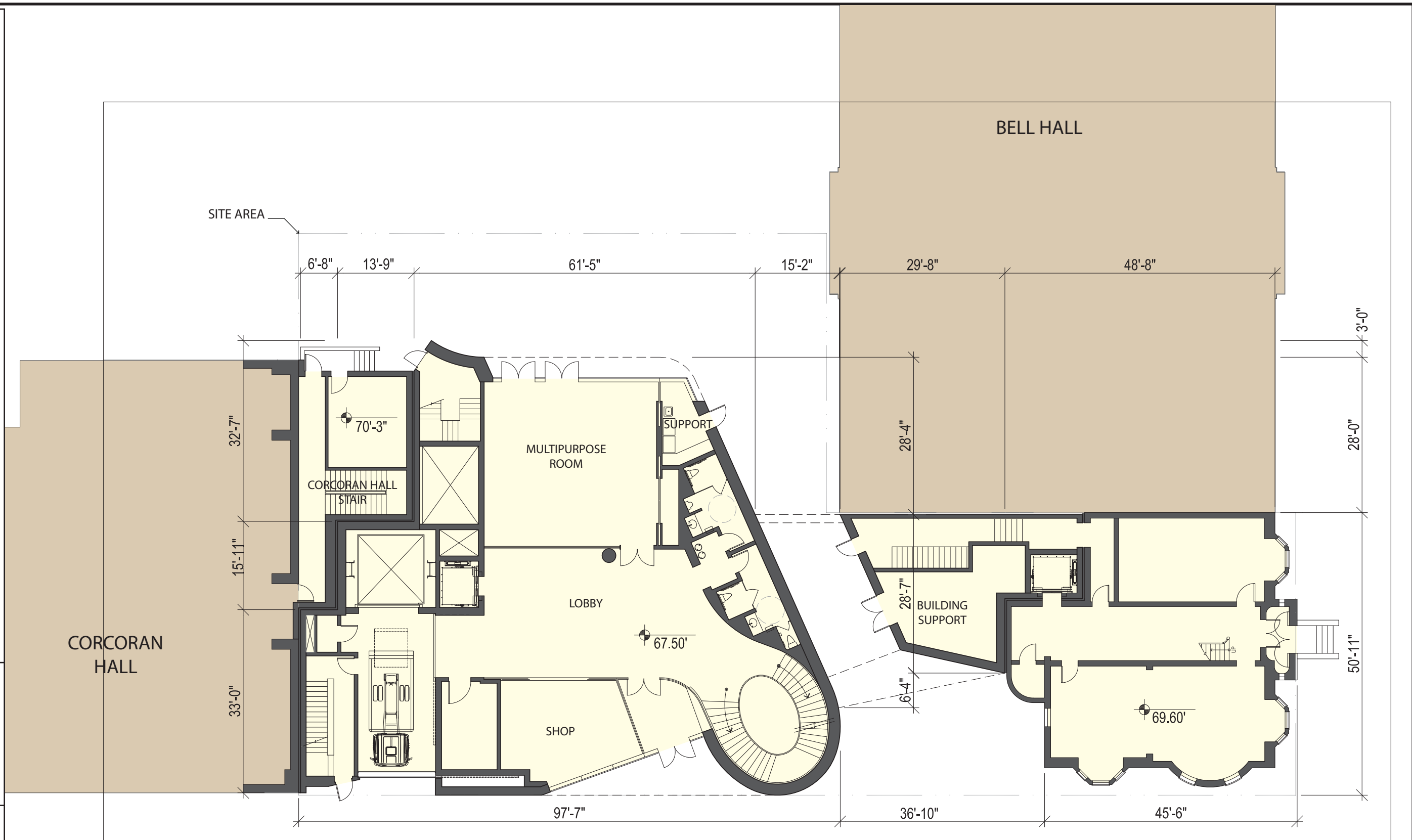
10/31/2011

TITLE

Ground Floor Plan

NUMBER

A-17

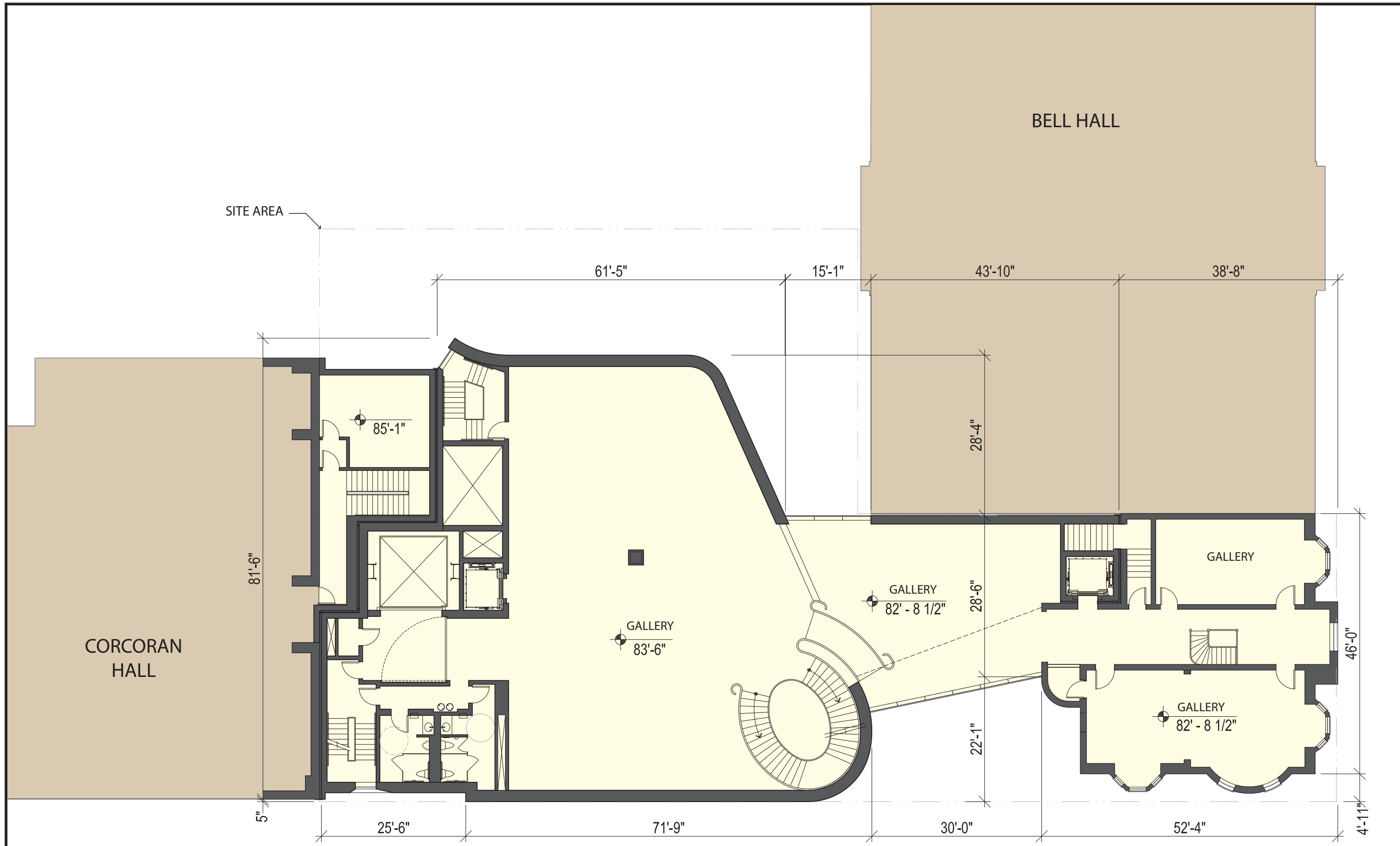


GROUND FLOOR PLAN



NOTE: INTERIOR LAYOUTS ARE ILLUSTRATIVE ONLY  
AND SUBJECT TO CHANGE ON FINAL PLAN

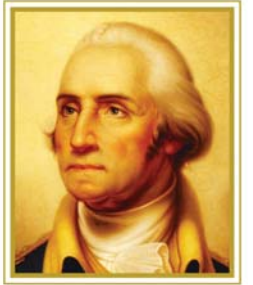




SECOND FLOOR PLAN



NOTE: INTERIOR LAYOUTS ARE ILLUSTRATIVE ONLY AND SUBJECT TO CHANGE ON FINAL PLAN

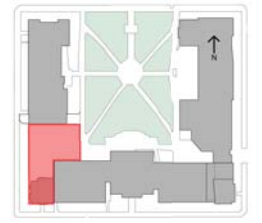


THE GEORGE WASHINGTON UNIVERSITY  
WASHINGTON DC

The George Washington University Museum

HARTMAN-COX ARCHITECTS

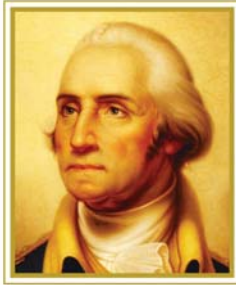
KEY PLAN



DATE 10/31/2011

TITLE Second Floor Plan

NUMBER A-18

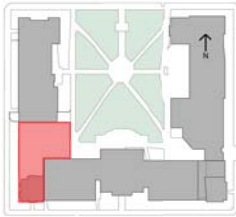


THE GEORGE  
WASHINGTON  
UNIVERSITY  
WASHINGTON DC

The  
George  
Washington  
University  
Museum

HARTMAN-COX  
ARCHITECTS

KEY PLAN



DATE

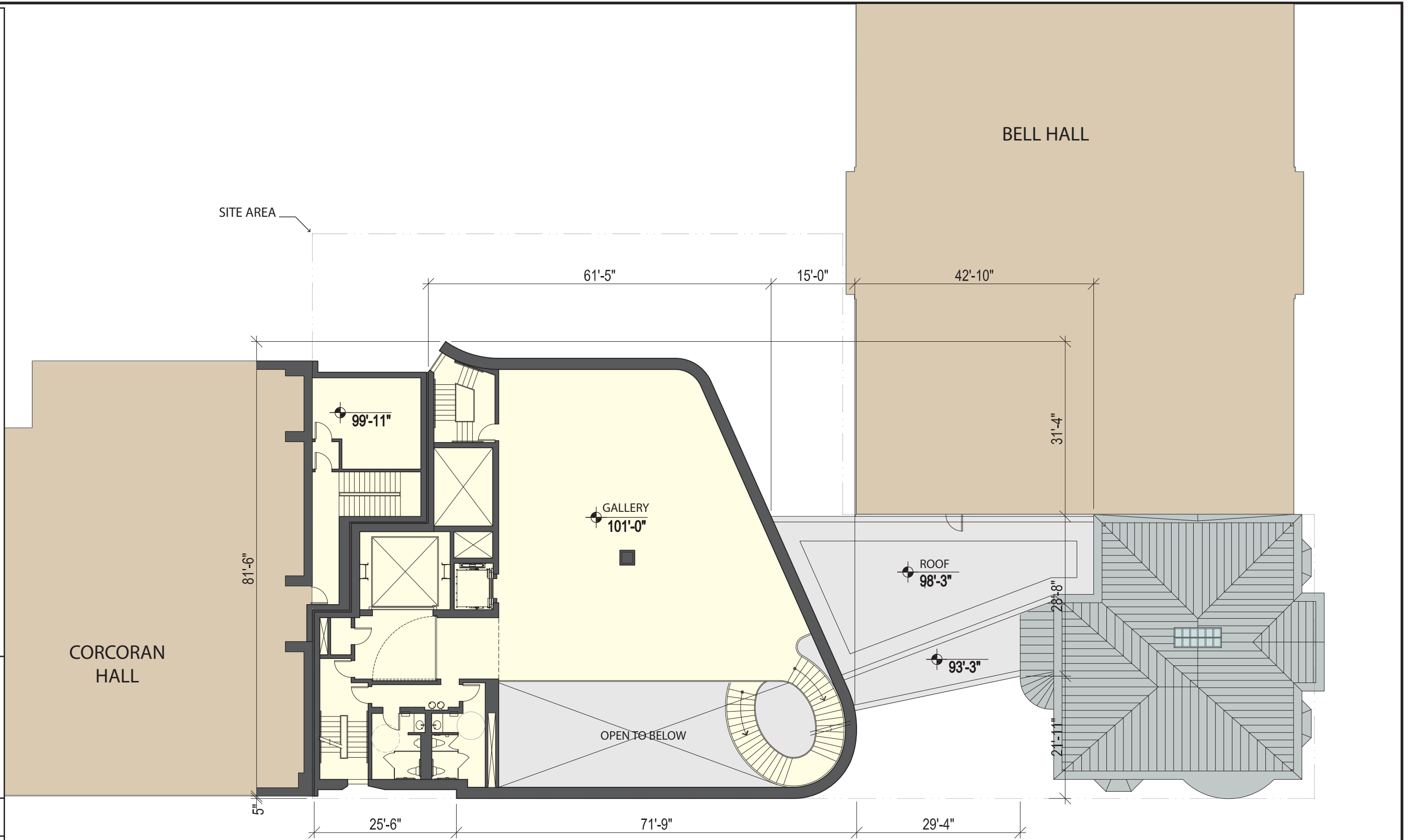
10/31/2011

TITLE

Third Floor  
Plan

NUMBER

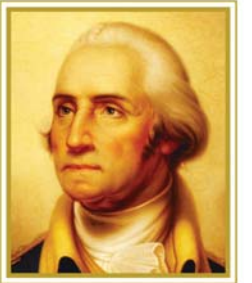
A-19



THIRD FLOOR PLAN



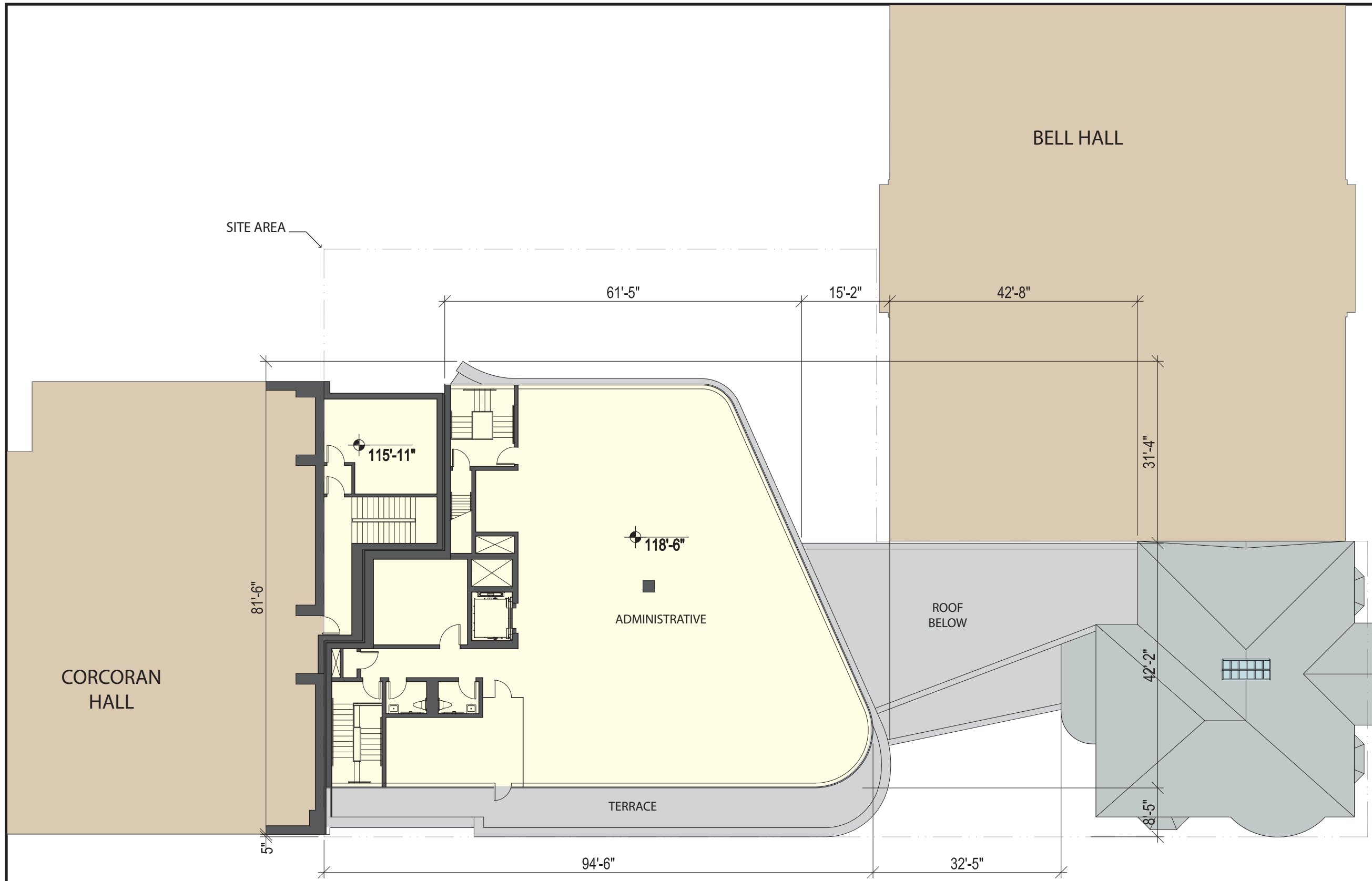
NOTE: INTERIOR LAYOUTS ARE ILLUSTRATIVE ONLY  
AND SUBJECT TO CHANGE ON FINAL PLAN



THE GEORGE WASHINGTON UNIVERSITY WASHINGTON DC

The George Washington University Museum

HARTMAN-COX ARCHITECTS

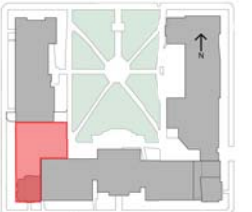


FOURTH FLOOR PLAN



NOTE: INTERIOR LAYOUTS ARE ILLUSTRATIVE ONLY AND SUBJECT TO CHANGE ON FINAL PLAN

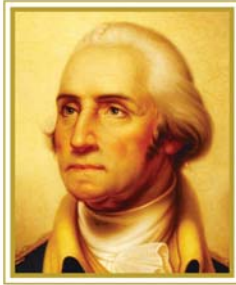
KEY PLAN



DATE 10/31/2011

TITLE Fourth Floor Plan

NUMBER A-20

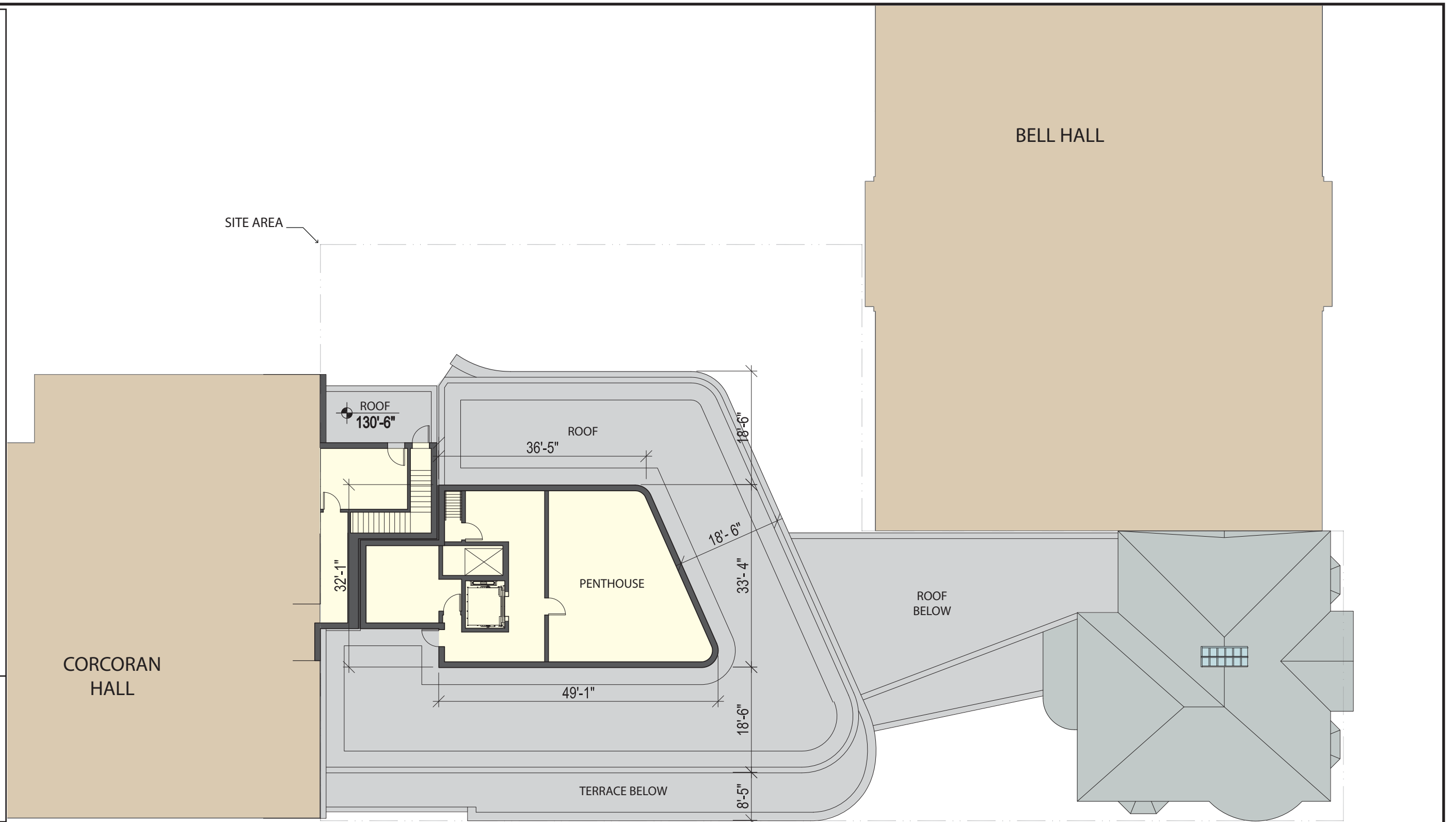


THE GEORGE  
WASHINGTON  
UNIVERSITY  
WASHINGTON DC

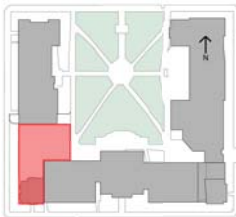
The  
George  
Washington  
University  
Museum

HARTMAN-COX  
ARCHITECTS

SITE AREA



KEY PLAN



DATE

10/31/2011

TITLE

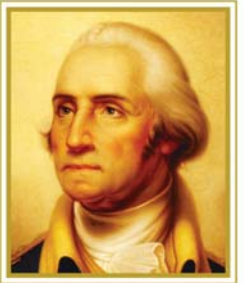
Penthouse Floor  
Plan

NUMBER

A-21

## PENTHOUSE FLOOR PLAN

NOTE: INTERIOR LAYOUTS ARE ILLUSTRATIVE ONLY  
AND SUBJECT TO CHANGE ON FINAL PLAN

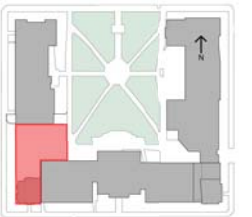


THE GEORGE  
WASHINGTON  
UNIVERSITY  
WASHINGTON DC

The  
George  
Washington  
University  
Museum

HARTMAN-COX  
ARCHITECTS

KEY PLAN



DATE  
10/31/2011

TITLE  
Roof  
Plan

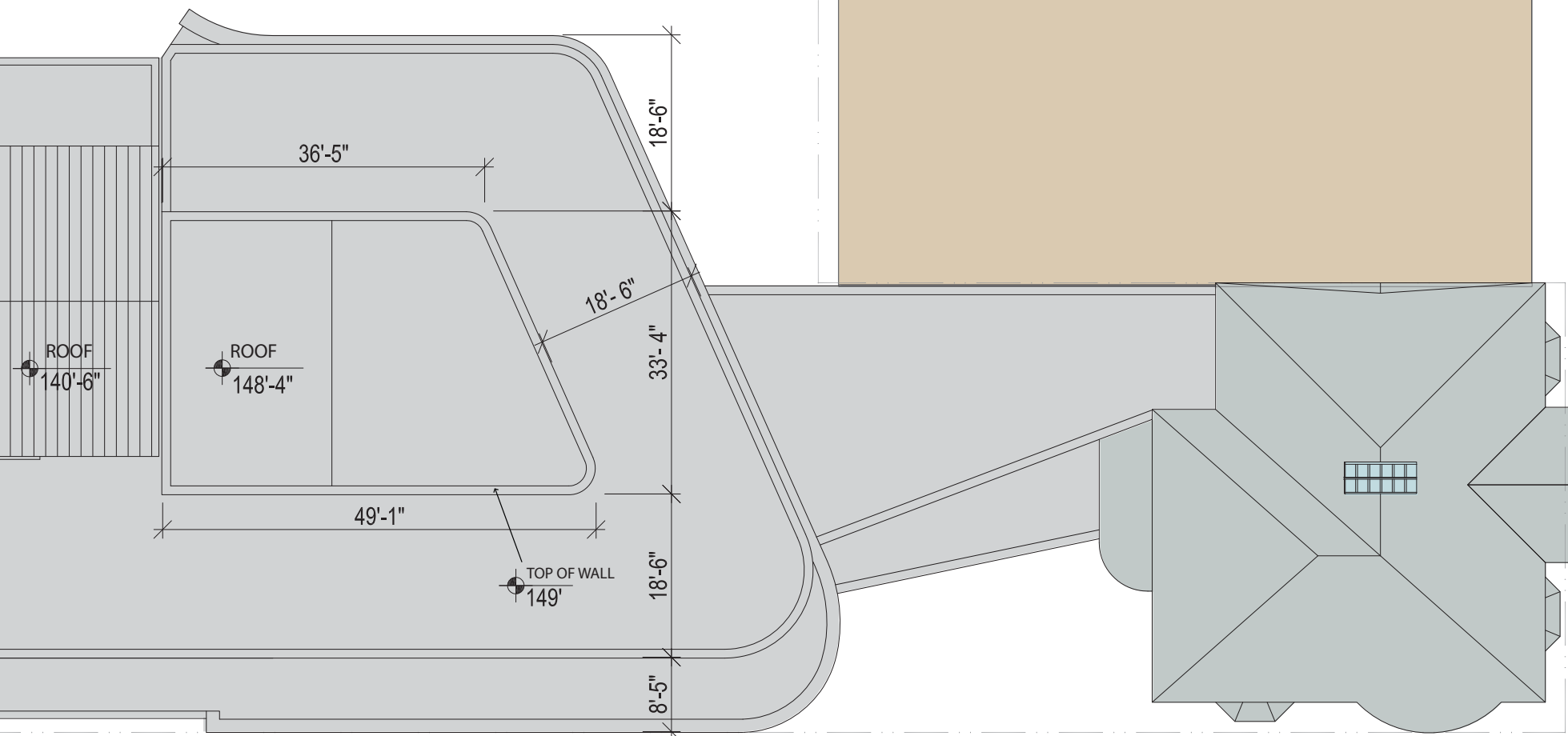
NUMBER  
A-22

BELL HALL

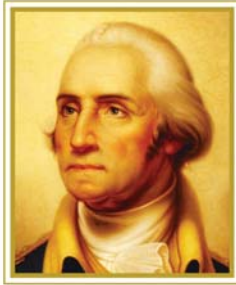
SITE AREA

CORCORAN  
HALL

ROOF PLAN



NOTE: INTERIOR LAYOUTS ARE ILLUSTRATIVE ONLY  
AND SUBJECT TO CHANGE ON FINAL PLAN

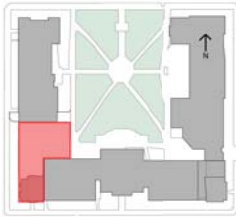


THE GEORGE  
WASHINGTON  
UNIVERSITY  
WASHINGTON DC

The  
George  
Washington  
University  
Museum

HARTMAN-COX  
ARCHITECTS

KEY PLAN



DATE

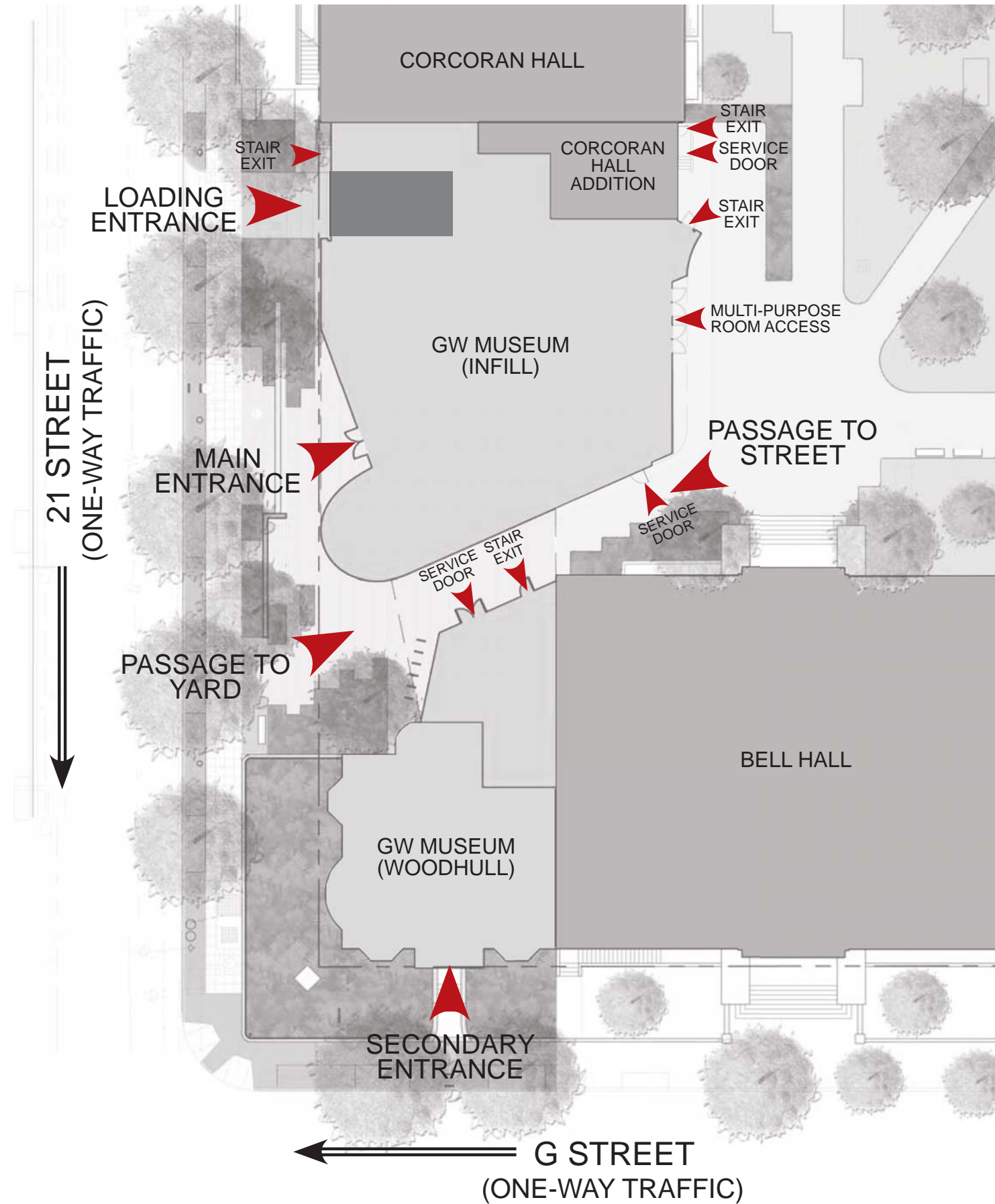
10/31/2011

TITLE

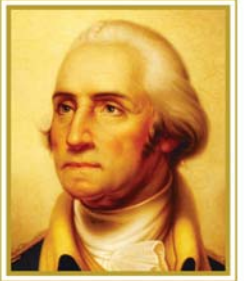
Circulation and  
Loading Plan

NUMBER

A-23



KEY	
	24' Interior Loading Berth



THE GEORGE  
WASHINGTON  
UNIVERSITY  
WASHINGTON DC

The  
George  
Washington  
University  
Museum

HARTMAN-COX  
ARCHITECTS

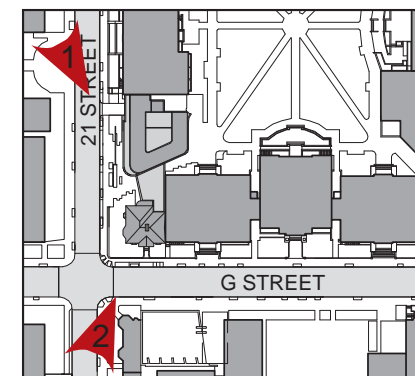
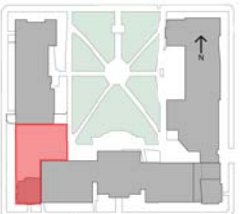


1. PERSPECTIVE VIEW, LOOKING SOUTHEAST ON 21 STREET



2. PERSPECTIVE VIEW, LOOKING NORTHEAST ON G STREET

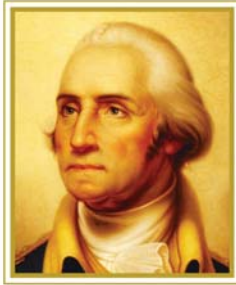
KEY PLAN



DATE  
10/31/2011

TITLE  
21 St & G ST  
Perspective Views

NUMBER  
A-24

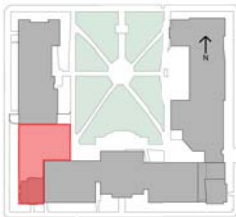


THE GEORGE  
WASHINGTON  
UNIVERSITY  
WASHINGTON DC

The  
George  
Washington  
University  
Museum

HARTMAN-COX  
ARCHITECTS

KEY PLAN



DATE

10/31/2011

TITLE

21 ST Elevation

NUMBER

A-25



NOTE: SIGNAGE IS SHOWN FOR ILLUSTRATIVE PURPOSES ONLY.  
TEXT AND DESIGN ARE SUBJECT TO CHANGE ON FINAL PLAN.