

THE GEORGE  
WASHINGTON  
UNIVERSITY  
WASHINGTON, DC

SCIENCE AND  
ENGINEERING  
COMPLEX  
(SEC)

Square 55 - Washington DC 20052

Architecture  
Engineering  
Planning  
Interior Design

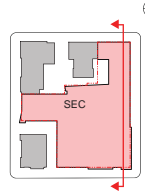
Ballinger

833 Chestnut Street  
Suite 1400  
Philadelphia, PA 19107  
V 215.446.0900  
F 215.446.0901  
ballinger-sec.com

Hickok Cole



KEY PLAN:



DATE:  
NOVEMBER 15, 2010

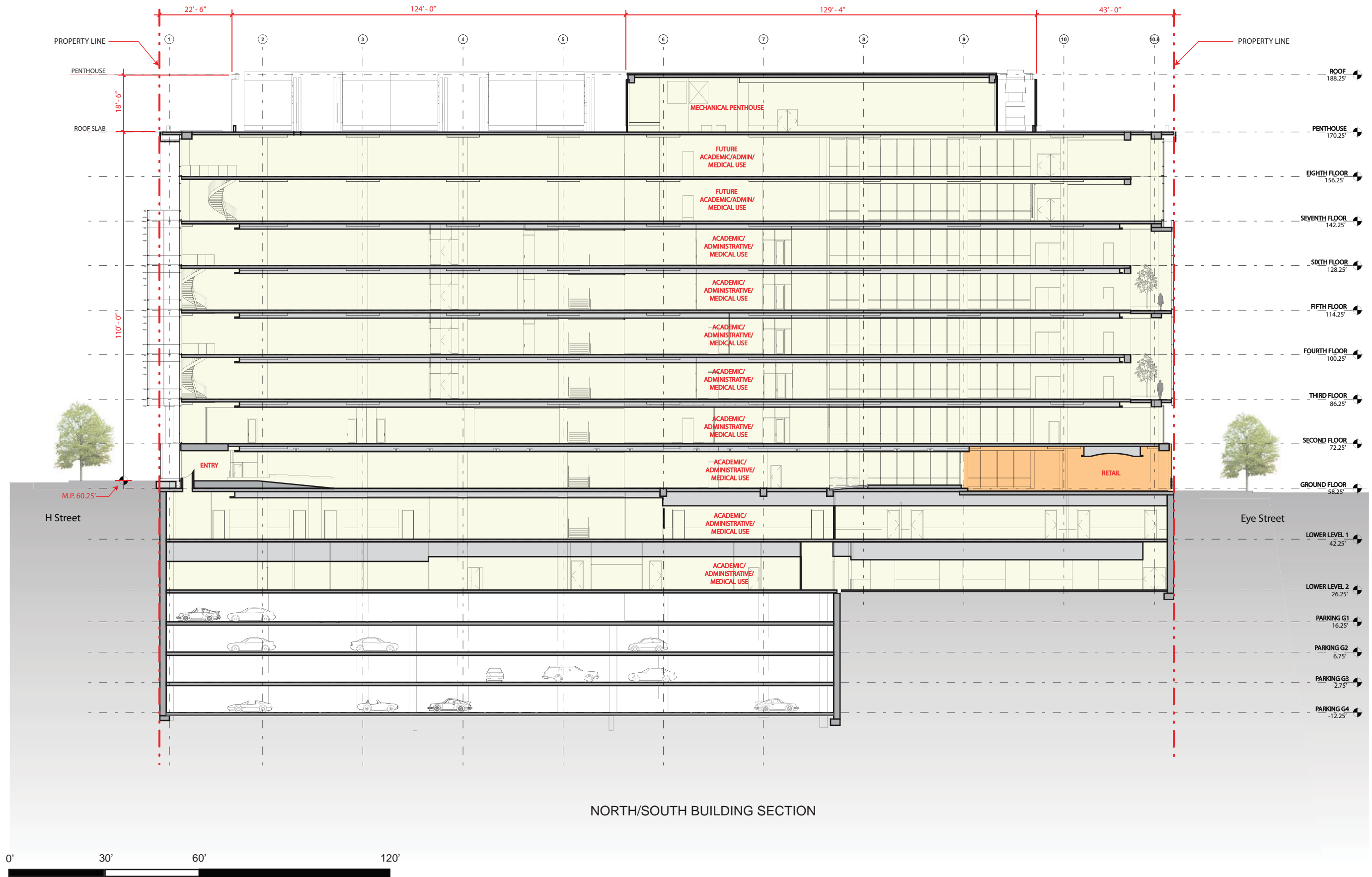
SECOND-STAGE  
PUD APPLICATION

TITLE:

NORTH/SOUTH  
BUILDING  
SECTION

NUMBER:

A-51



NORTH/SOUTH BUILDING SECTION



THE GEORGE  
WASHINGTON  
UNIVERSITY  
WASHINGTON, DC

SCIENCE AND  
ENGINEERING  
COMPLEX  
(SEC)

Square 55 - Washington DC 20052

Architecture  
Engineering  
Planning  
Interior Design

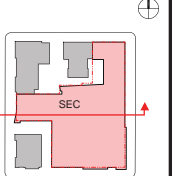
**Ballinger**

833 Chestnut Street Suite 1400  
Philadelphia, PA 19107  
V 215.446.0900  
F 215.446.0901  
ballinger.com

**Hickok Cole**



KEY PLAN:



DATE:  
NOVEMBER 15, 2010

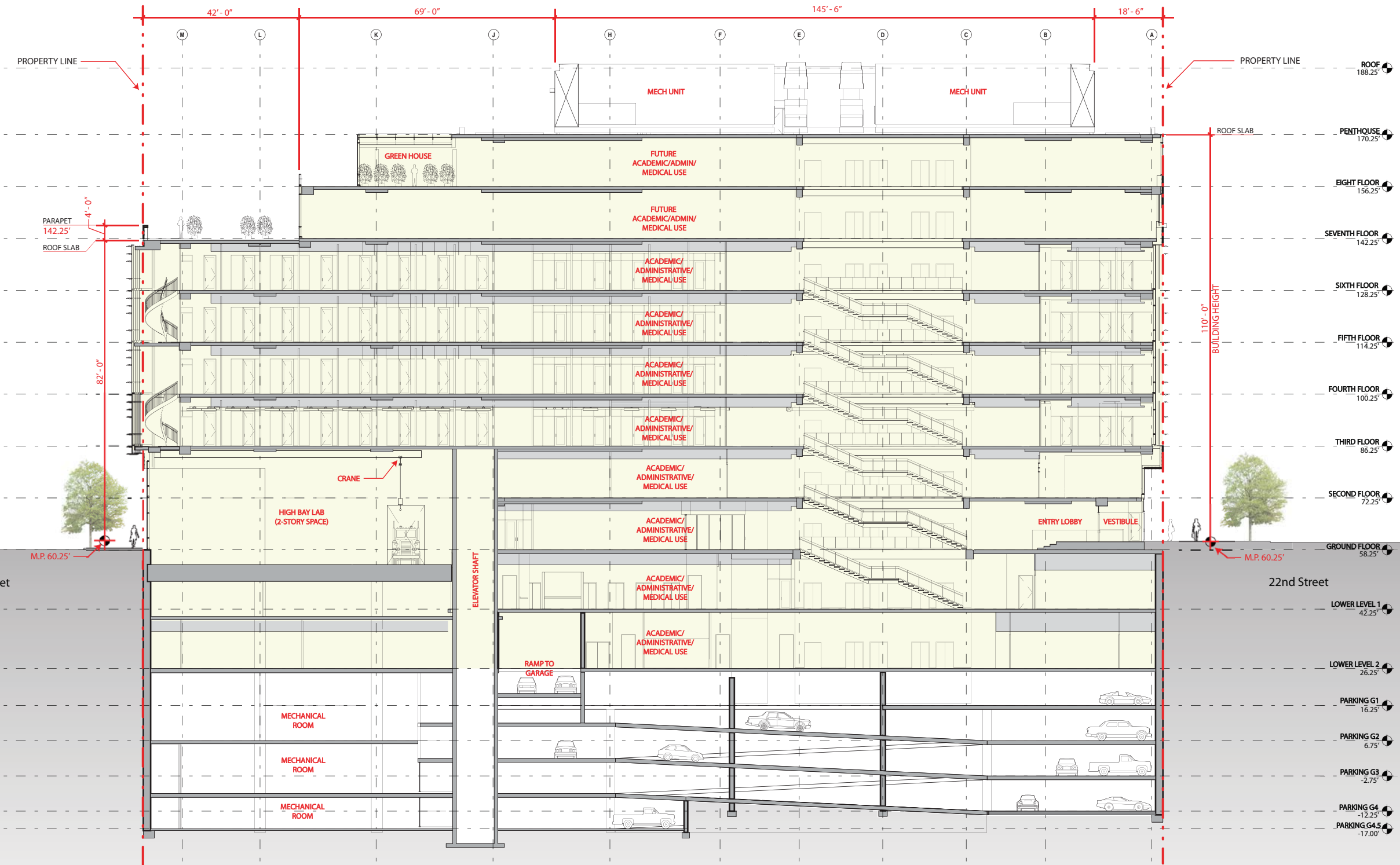
SECOND-STAGE  
PUD APPLICATION

TITLE:

EAST/WEST  
BUILDING  
SECTION

NUMBER:

A-52



EAST/WEST BUILDING SECTION





THE GEORGE  
WASHINGTON  
UNIVERSITY  
WASHINGTON, D.C.

SCIENCE AND  
ENGINEERING  
COMPLEX  
(SEC)

Square 55 - Washington DC 20052

Architecture  
Engineering  
Planning  
Interior Design

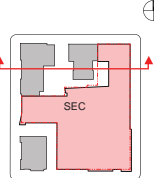
**Ballinger**

833 Chestnut Street  
Suite 1400  
Philadelphia, PA 19107  
V 215.446.0900  
F 215.446.0901  
ballinger-sec.com

**Hickok Cole**



KEY PLAN:



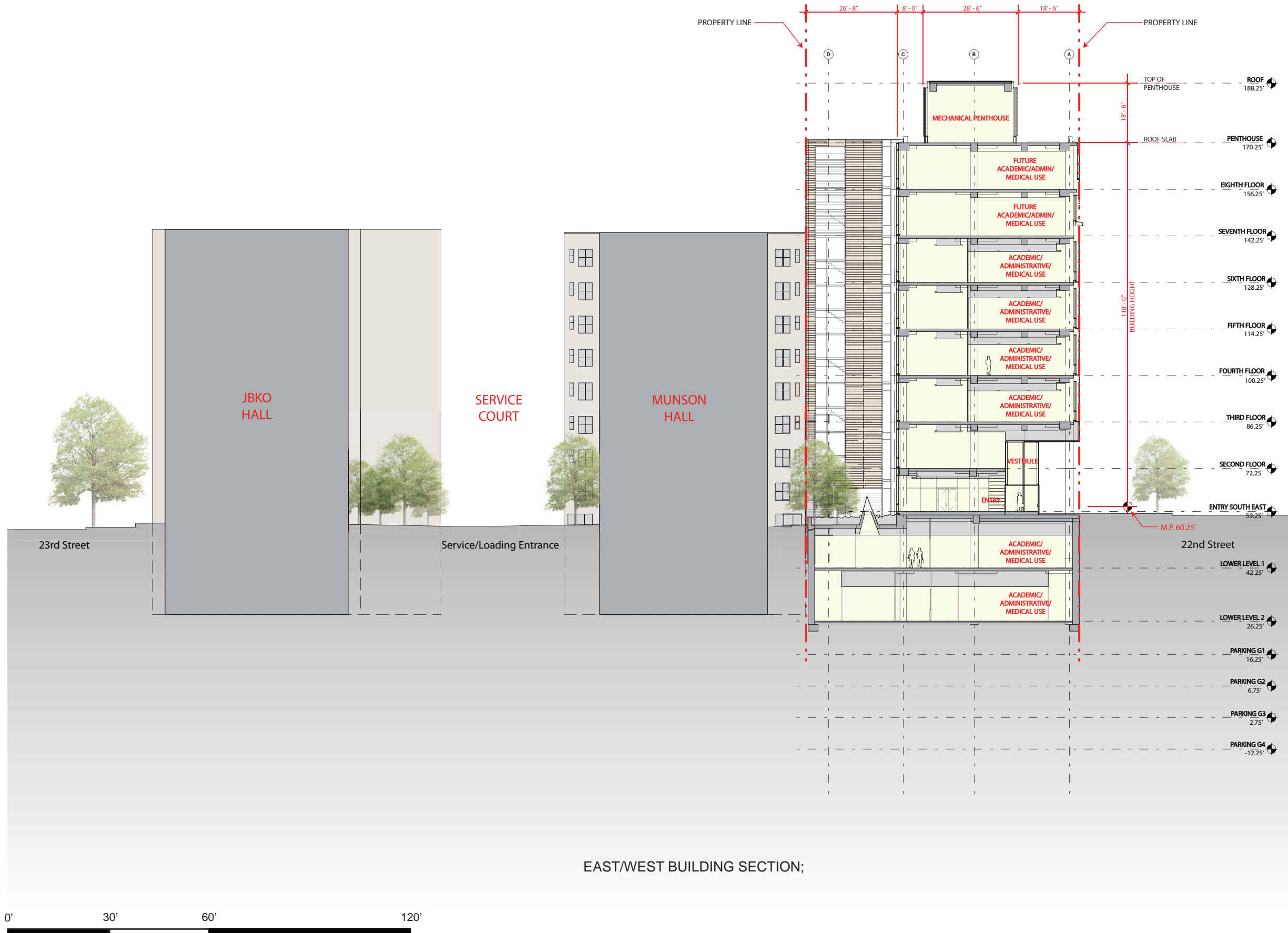
DATE:  
NOVEMBER 15, 2010

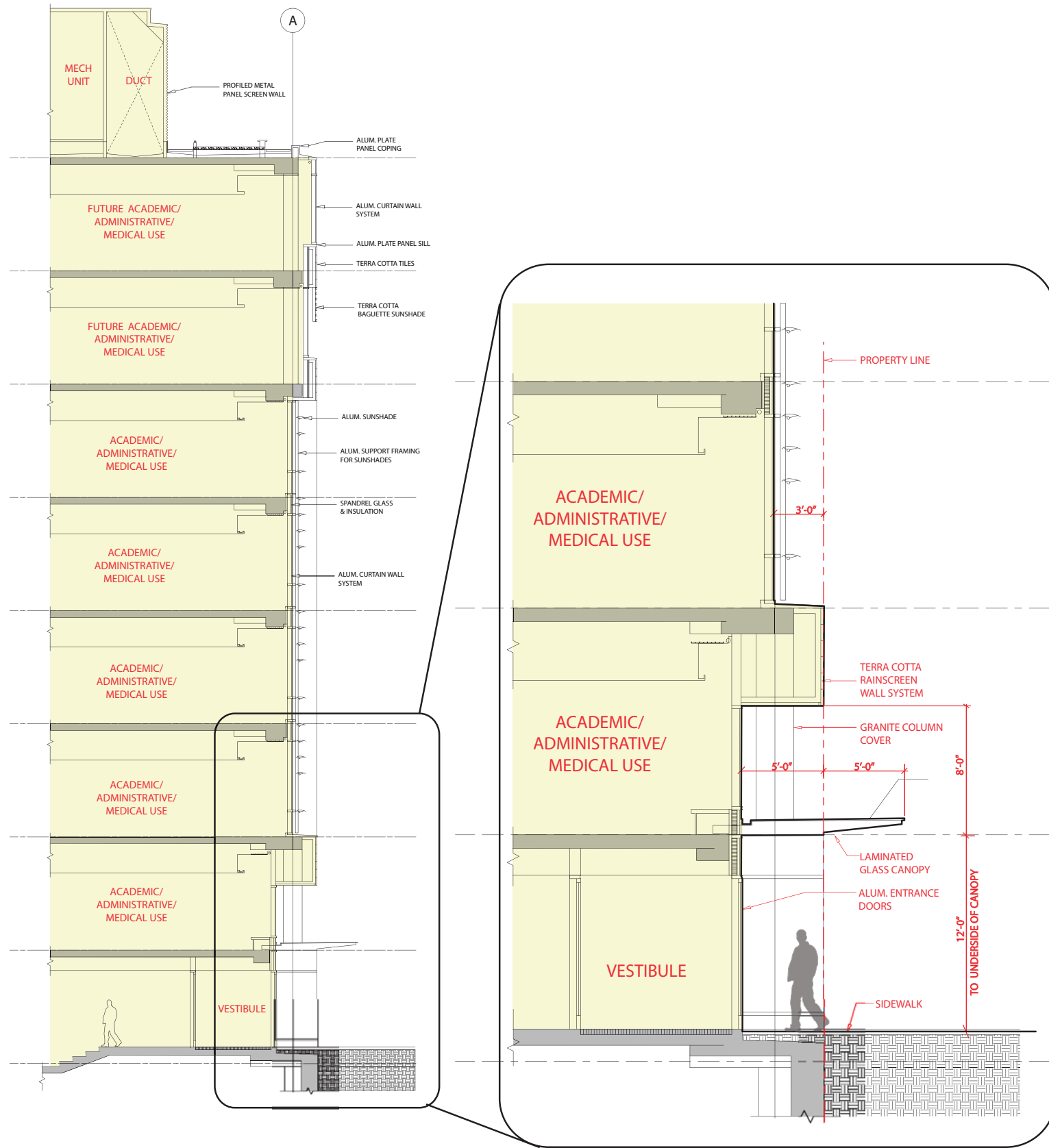
SECOND-STAGE  
PUD APPLICATION

TITLE:  
BLOCK SECTION  
THROUGH  
NEIGHBORING  
BUILDINGS

NUMBER:

**A-53**





BUILDING SECTION @ 22ND STREET  
SCALE: 1/16" = 1'-0"

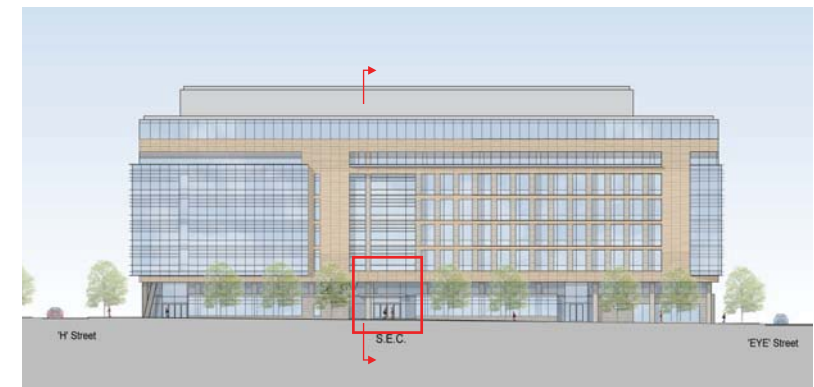
ENLARGED SECTION  
SCALE: 1/8" = 1'-0"



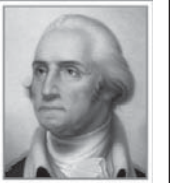
MODEL PHOTO - EAST ENTRANCE



EAST ENTRANCE



22nd STREET ELEVATION



THE GEORGE  
WASHINGTON  
UNIVERSITY  
WASHINGTON, DC

SCIENCE AND  
ENGINEERING  
COMPLEX  
(SEC)

Square 55 - Washington DC 20052

Architecture  
Engineering  
Planning  
Interior Design

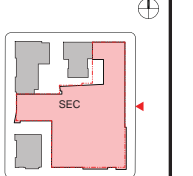
Ballinger

833 Chestnut Street  
Suite 1400  
Philadelphia, PA 19107  
V 215.446.0900  
F 215.446.0901  
ballinger-ae.com

Hickok Cole



KEY PLAN:



DATE:  
NOVEMBER 15, 2010

SECOND-STAGE  
PUD APPLICATION

TITLE:  
PARTIAL  
SECTION  
AT EAST  
ENTRANCE

NUMBER:

A-54



THE GEORGE WASHINGTON UNIVERSITY  
WASHINGTON DC

SCIENCE AND ENGINEERING COMPLEX (SEC)

Square 55 - Washington DC 20052

Architecture  
Engineering  
Planning  
Interior Design

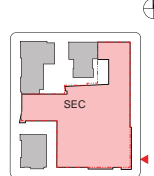
Ballinger

833 Chestnut Street Suite 1400  
Philadelphia, PA 19107  
V 215.446.0900  
F 215.446.0901  
ballinger-sec.com

Hickok Cole



KEY PLAN:



DATE:  
NOVEMBER 15, 2010

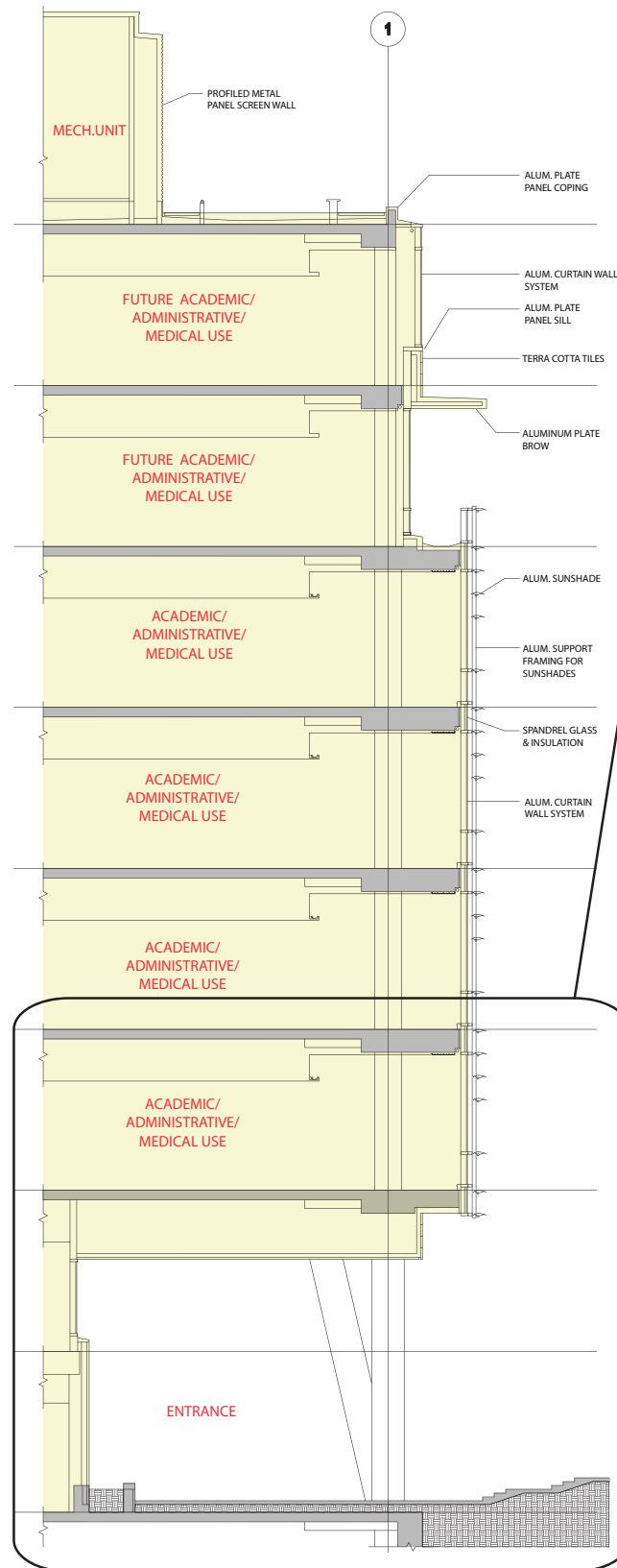
SECOND-STAGE  
PUD APPLICATION

TITLE:

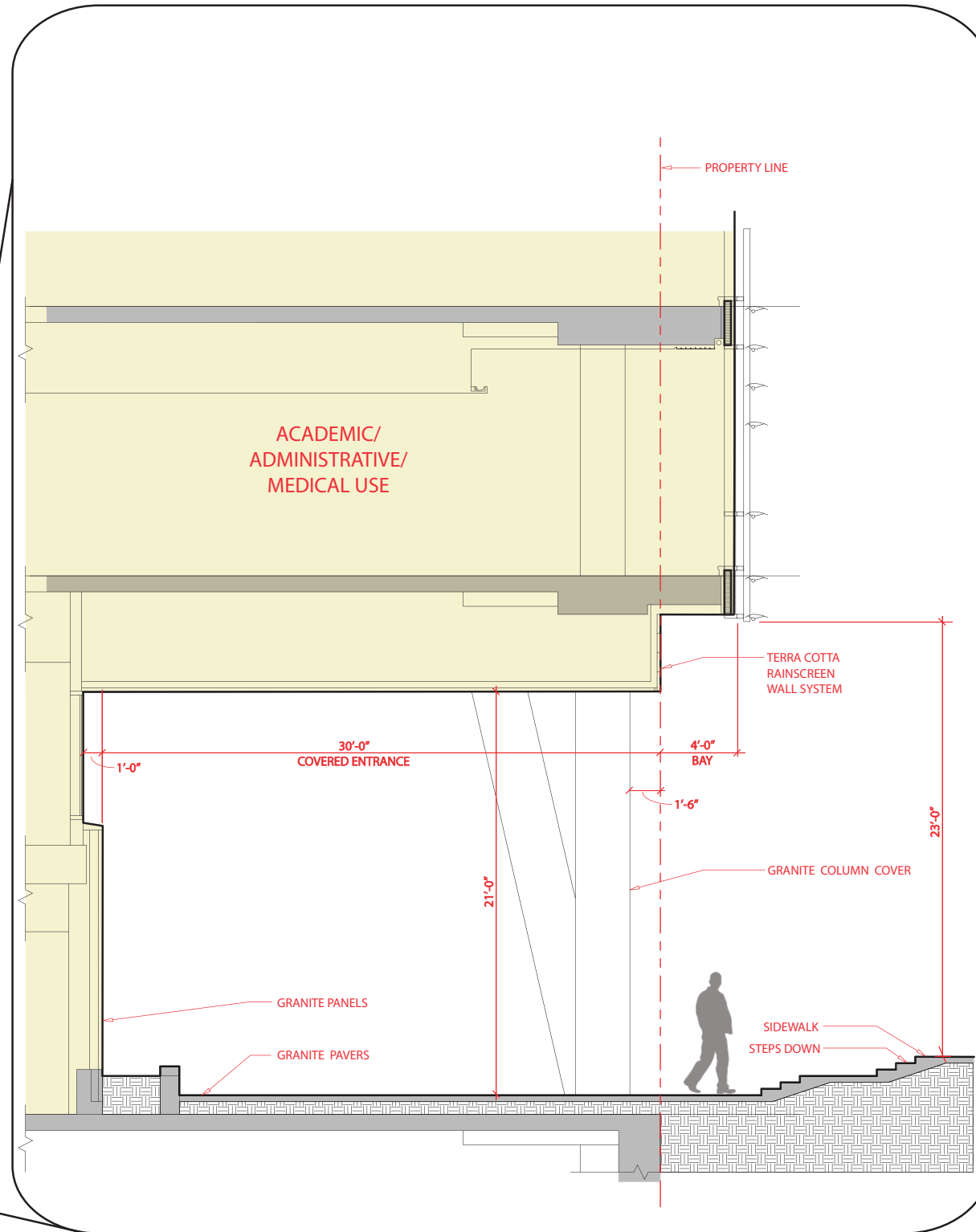
PARTIAL  
SECTION AT  
SOUTHEAST  
ENTRANCE

NUMBER:

A-55



BUILDING SECTION @ 22ND STREET AND H STREET  
SCALE: 1/16" = 1'-0"



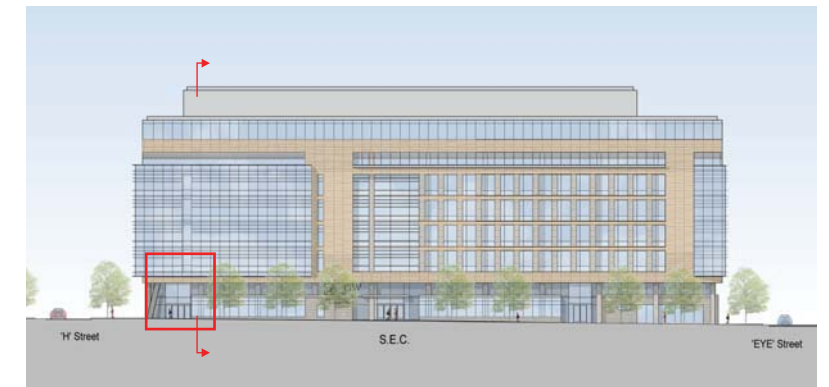
ENLARGED SECTION  
SCALE: 1/8" = 1'-0"



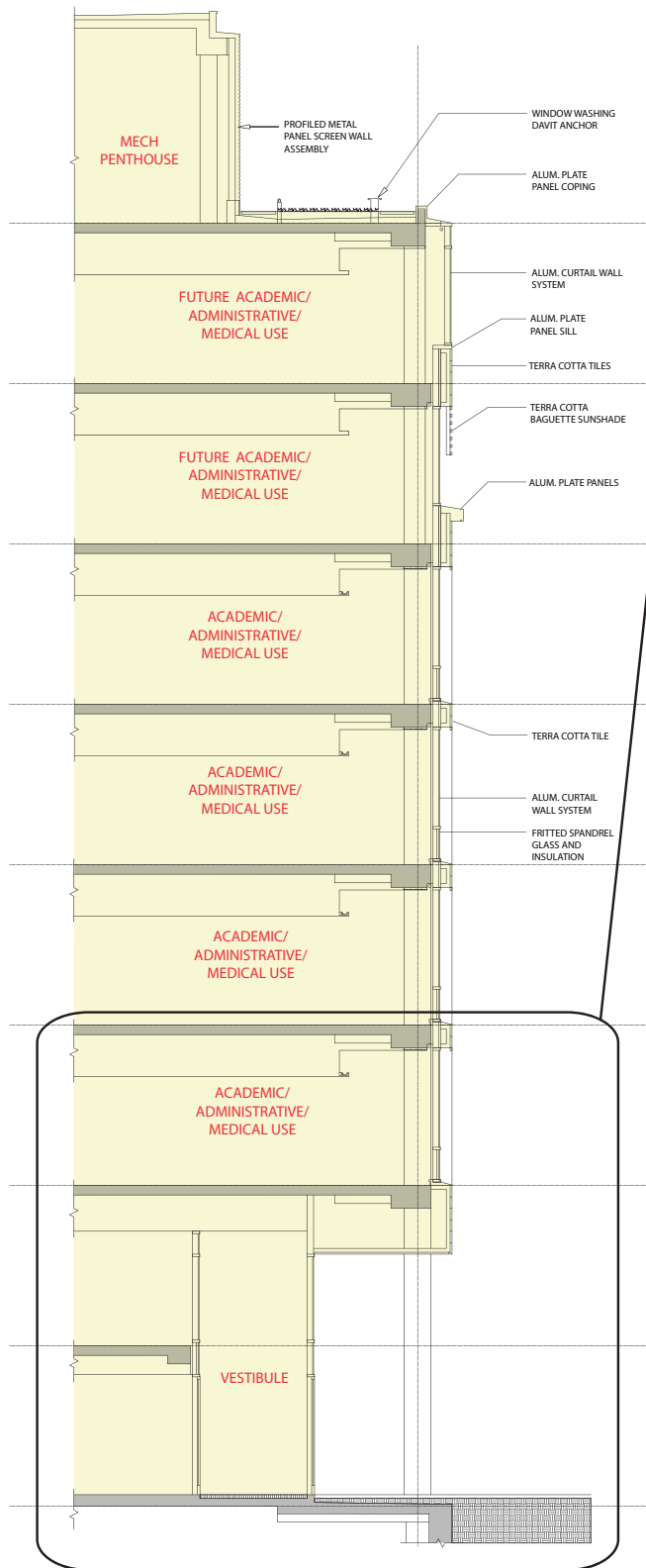
MODEL PHOTO -SOUTHEAST ENTRANCE



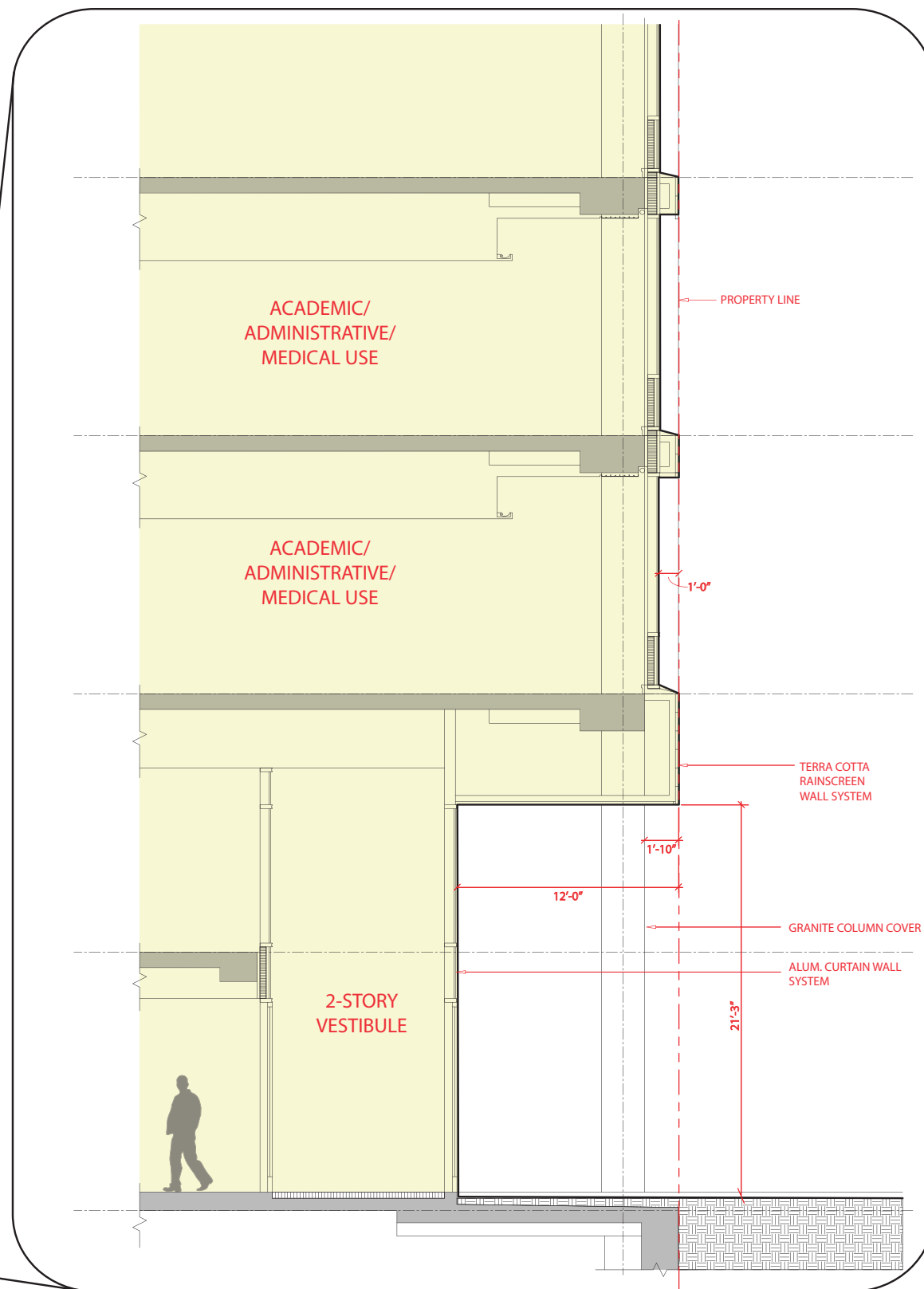
SOUTHEAST ENTRANCE



22nd STREET ELEVATION



BUILDING SECTION @ 22ND AND I STREET  
SCALE: 1/16" = 1'-0"



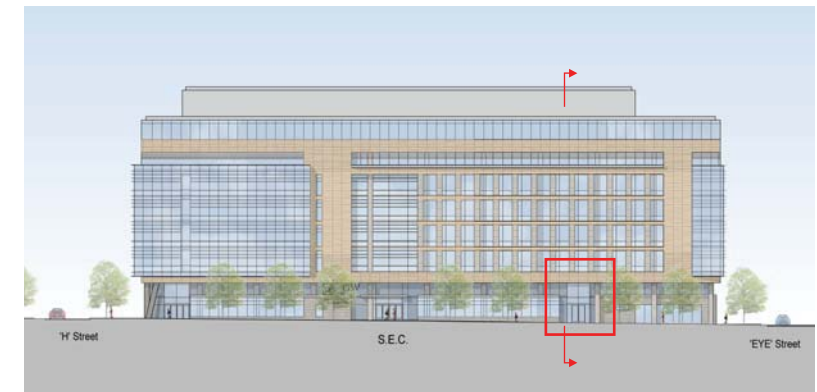
ENLARGED SECTION  
SCALE: 1/8" = 1'-0"



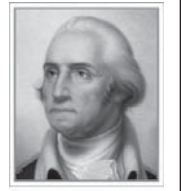
MODEL PHOTO - NORTHEAST ENTRANCE



NORTHEAST ENTRANCE



22nd STREET ELEVATION



THE GEORGE WASHINGTON UNIVERSITY  
WASHINGTON, DC

SCIENCE AND ENGINEERING COMPLEX (SEC)  
Square 55 - Washington DC 20052

Architecture  
Engineering  
Planning  
Interior Design

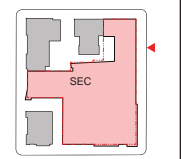
**Ballinger**

833 Chestnut Street  
Suite 1400  
Philadelphia, PA 19107  
V 215.446.0900  
F 215.446.0901  
ballinger.com

**Hickok Cole**



KEY PLAN:  
N



DATE: NOVEMBER 15, 2010

SECOND-STAGE PUD APPLICATION

TITLE:  
PARTIAL SECTION AT NORTHEAST ENTRANCE

NUMBER:  
**A-56**



THE GEORGE  
WASHINGTON  
UNIVERSITY  
WASHINGTON, D.C.

SCIENCE AND  
ENGINEERING  
COMPLEX  
(SEC)

Square 55 - Washington DC 20052

Architecture  
Engineering  
Planning  
Interior Design

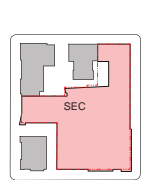
Ballinger

833 Chestnut Street  
Suite 1400  
Philadelphia, PA 19107  
V 215.446.0900  
F 215.446.0901  
ballinger-aec.com

Hickok Cole



KEY PLAN:



DATE:  
NOVEMBER 15, 2010

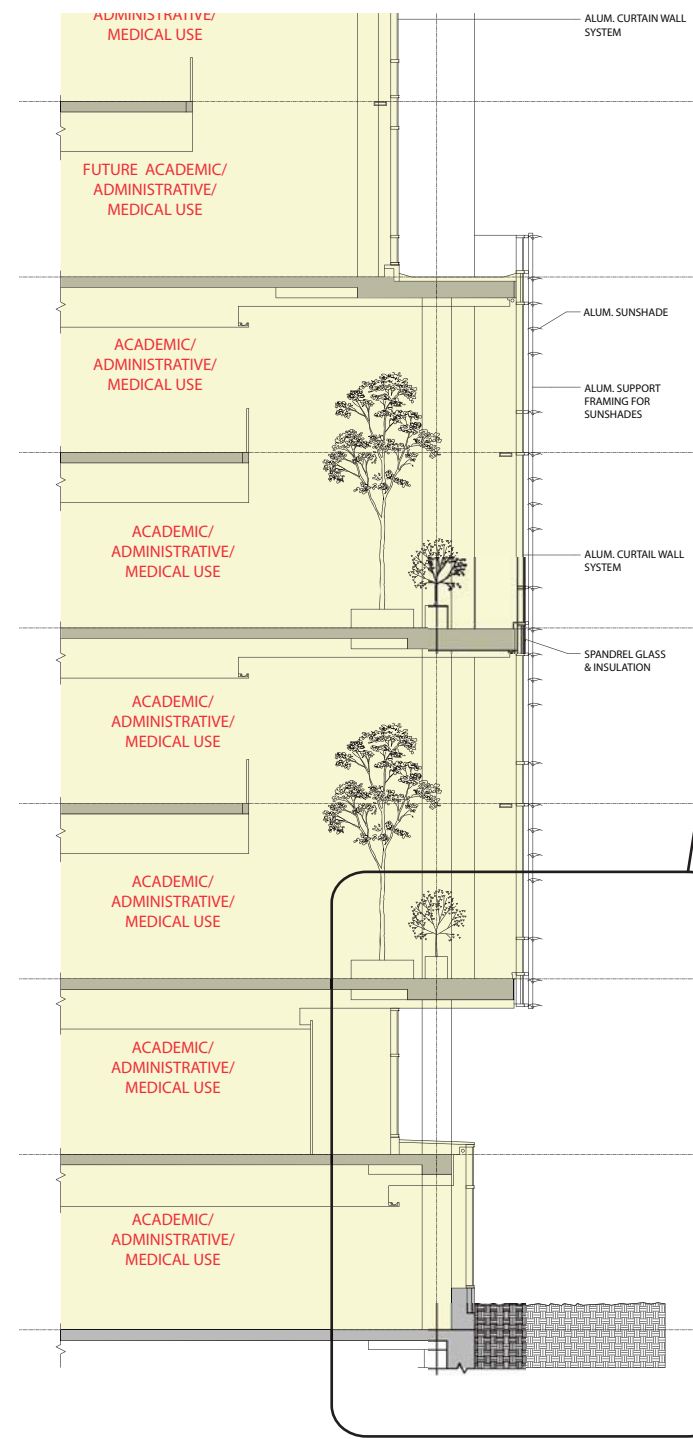
SECOND-STAGE  
PUD APPLICATION

TITLE:

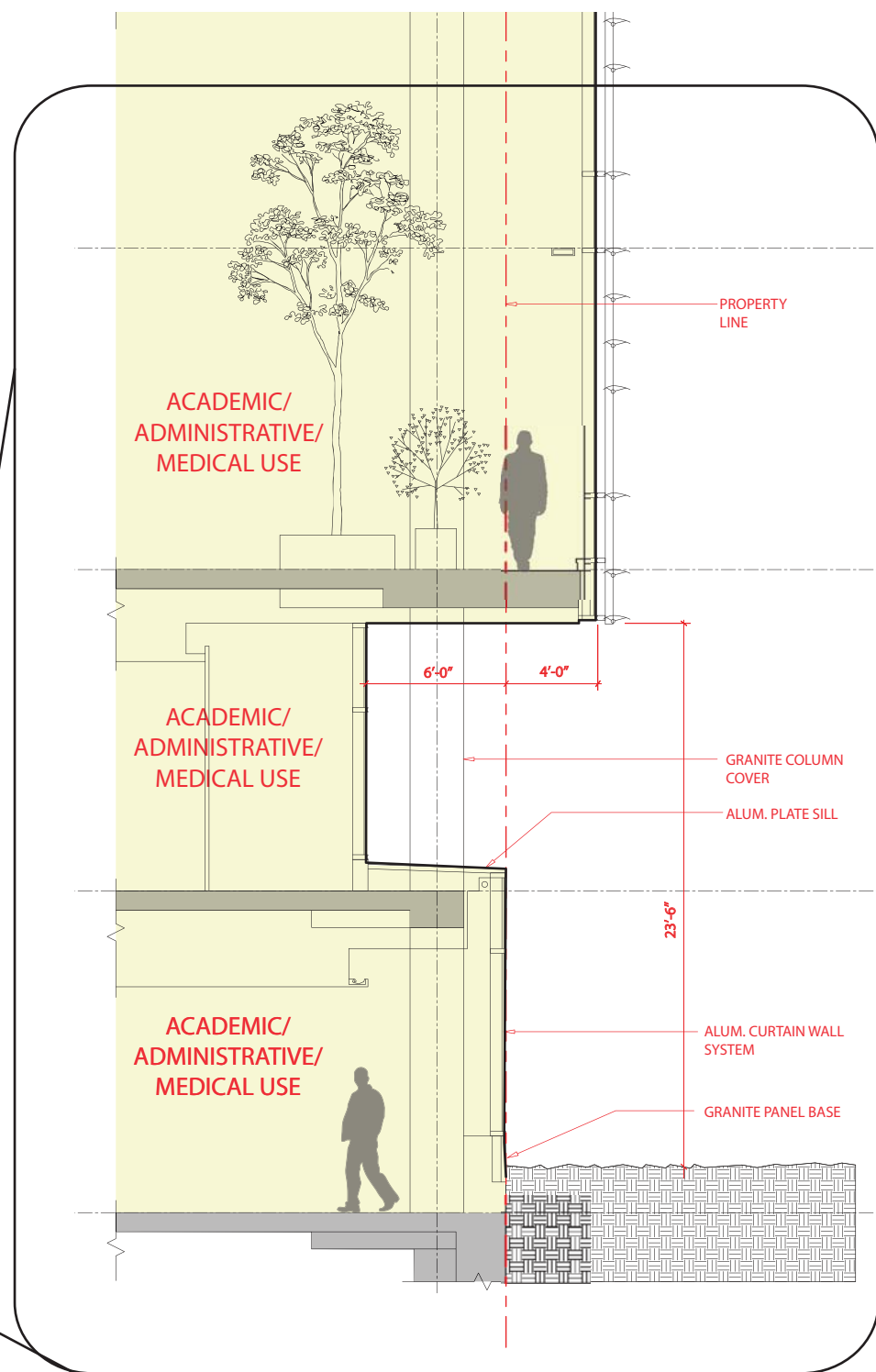
PARTIAL  
SECTION AT  
H STREET

NUMBER:

A-57



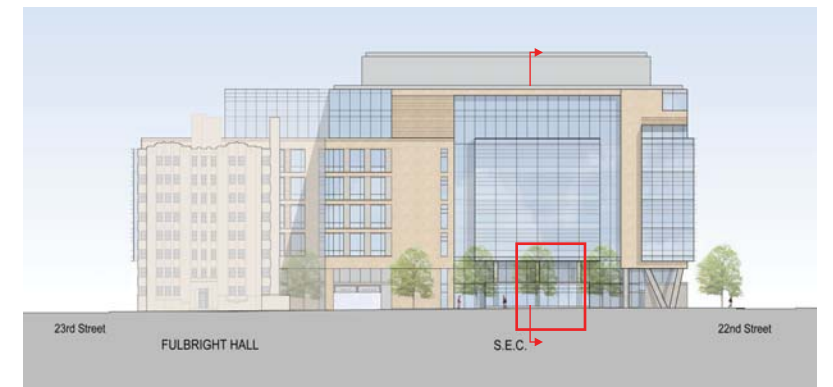
BUILDING SECTION @ H STREET  
SCALE: 1/16" = 1'-0"



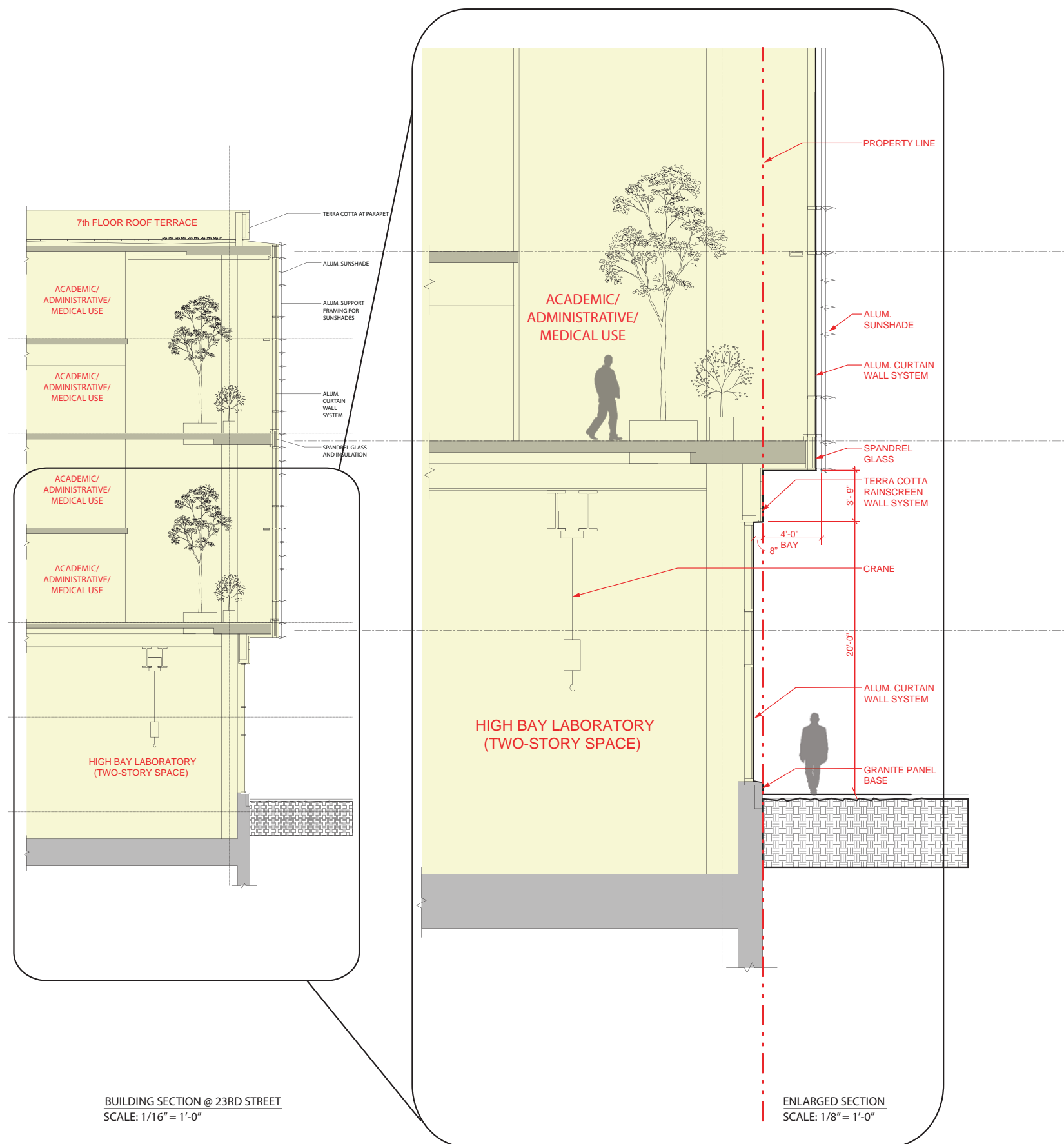
ENLARGED SECTION  
SCALE: 1/8" = 1'-0"



MODEL PHOTO OF SOUTHEAST CORNER



H STREET ELEVATION



BUILDING SECTION @ 23RD STREET  
SCALE: 1/16" = 1'-0"

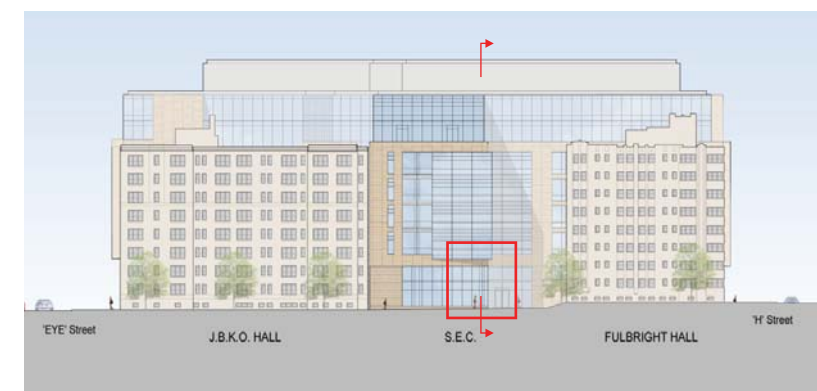
ENLARGED SECTION  
SCALE: 1/8" = 1'-0"



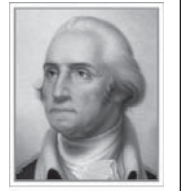
MODEL PHOTO - 23rd STREET ENTRANCE



23rd STREET ENTRANCE



23rd STREET ELEVATION



THE GEORGE  
WASHINGTON  
UNIVERSITY  
WASHINGTON, DC

SCIENCE AND  
ENGINEERING  
COMPLEX  
(SEC)

Square 55 - Washington DC 20052

Architecture  
Engineering  
Planning  
Interior Design

**Ballinger**

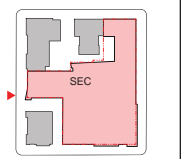
833 Chestnut Street  
Suite 1400  
Philadelphia, PA 19107  
V 215.446.0900  
F 215.446.0901  
ballinger.com

**Hickok Cole**



ARCHITECTS

KEY PLAN:  
N



DATE:  
NOVEMBER 15, 2010

SECOND-STAGE  
PUD APPLICATION

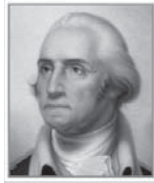
TITLE:

PARTIAL  
SECTION AT  
HIGH BAY

NUMBER:

**A-58**





THE GEORGE  
WASHINGTON  
UNIVERSITY  
WASHINGTON, DC

SCIENCE AND  
ENGINEERING  
COMPLEX  
(SEC)

Square 55 - Washington DC 20052

Architecture  
Engineering  
Planning  
Interior Design

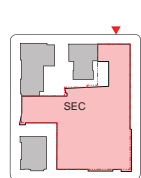
Ballinger

833 Chestnut Street  
Philadelphia, PA 19107  
V 215.446.0900  
F 215.446.0901  
ballinger-sec.com

Hickok Cole



KEY PLAN:



DATE:  
NOVEMBER 15, 2010

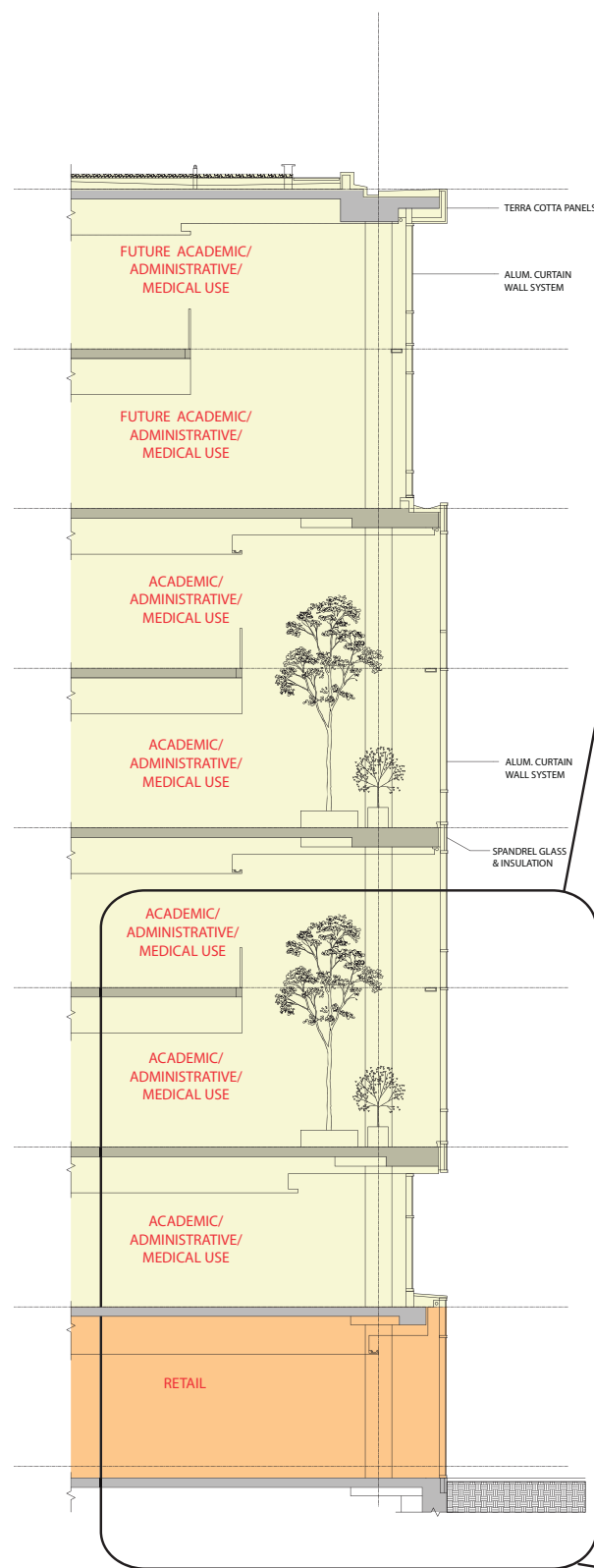
SECOND-STAGE  
PUD APPLICATION

TITLE:

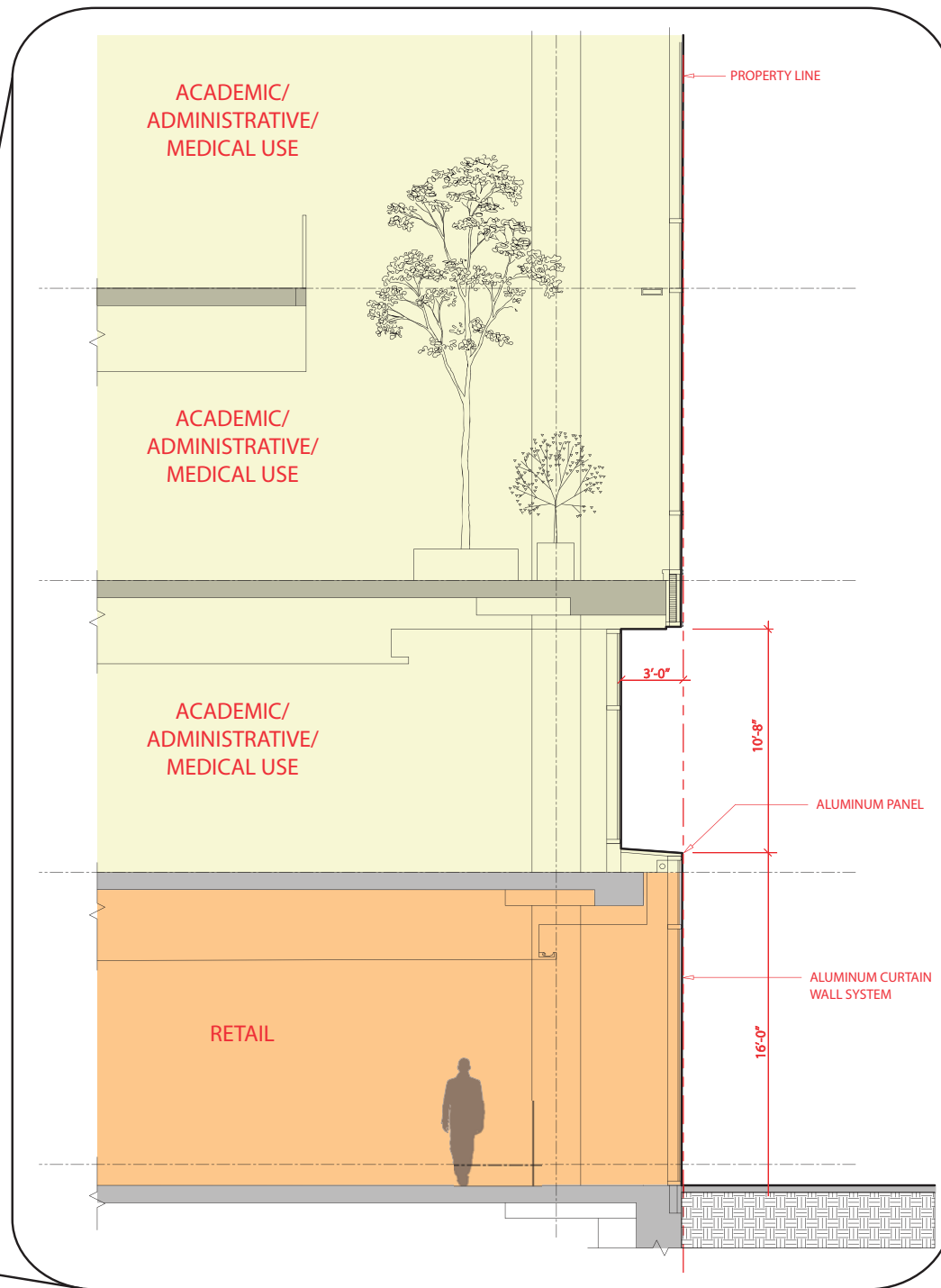
PARTIAL  
SECTION AT  
RETAIL  
ENTRANCE

NUMBER:

A-59



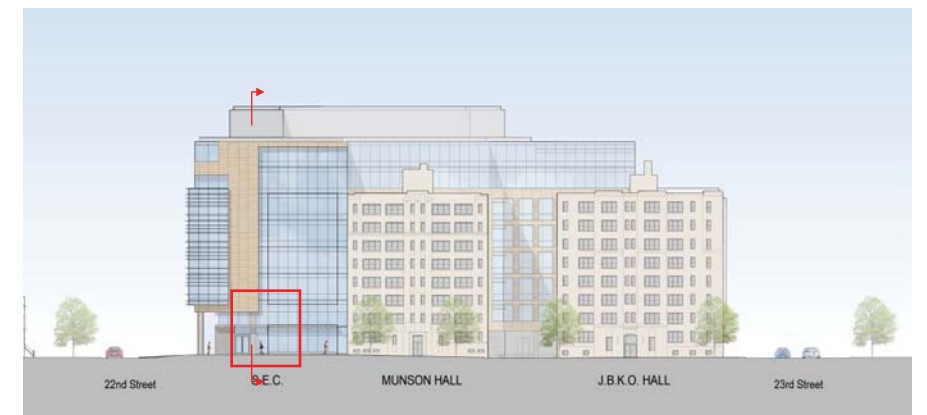
BUILDING SECTION @ I STREET  
SCALE: 1/16" = 1'-0"



ENLARGED SECTION  
SCALE: 1/8" = 1'-0"



MODEL PHOTO OF NORTHWEST CORNER



EYE STREET ELEVATION