

THE GEORGE
WASHINGTON
UNIVERSITY
WASHINGTON, D.C.

SCIENCE AND
ENGINEERING
COMPLEX
(SEC)

Square 55 - Washington DC 20052

Architecture
Engineering
Planning
Interior Design

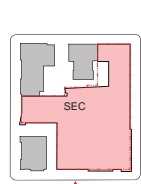
Ballinger

833 Chestnut Street
Suite 1400
Philadelphia, PA 19107
V 215.446.0900
F 215.446.0901
ballinger-sec.com

Hickok Cole



KEY PLAN:



DATE:
NOVEMBER 15, 2010

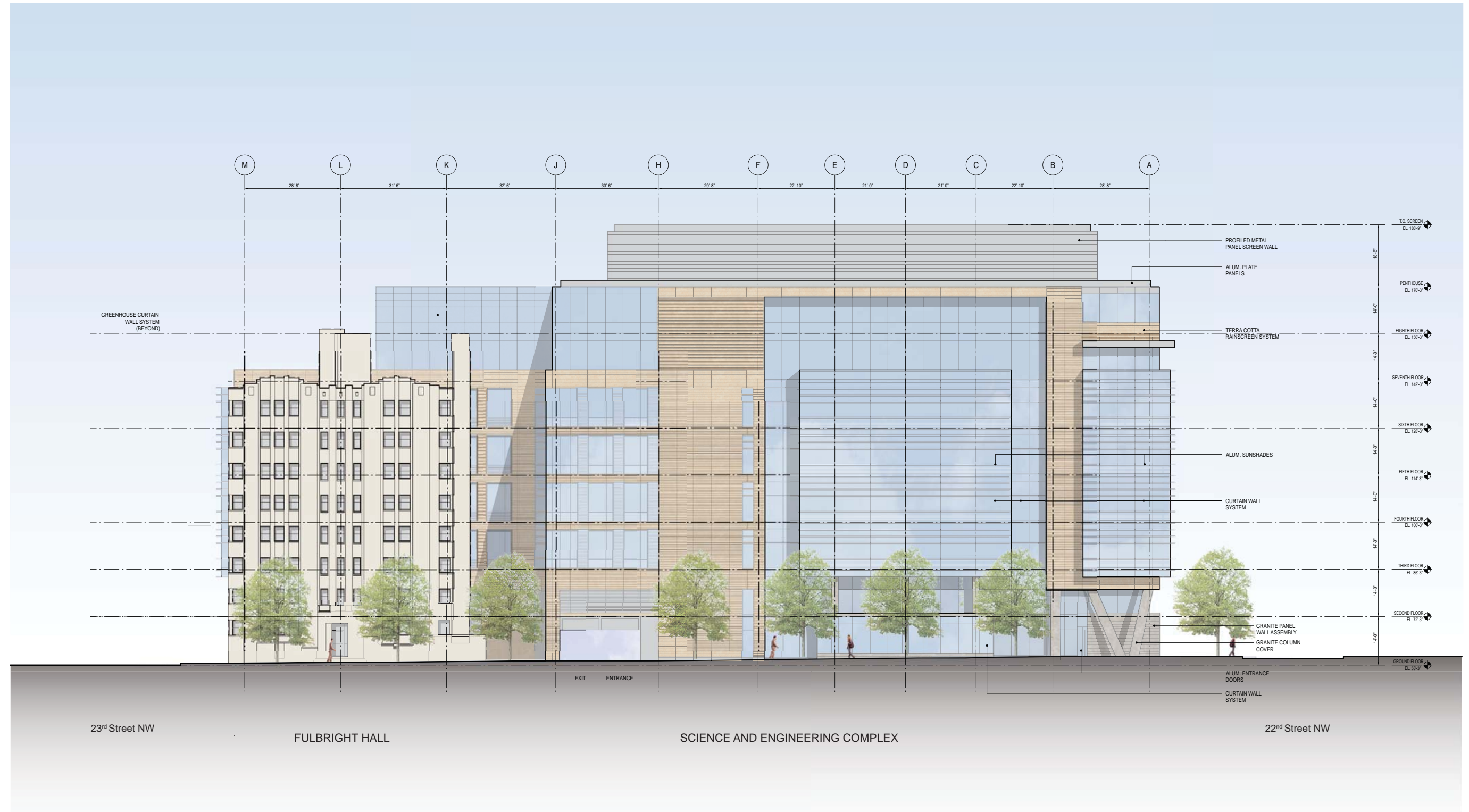
SECOND-STAGE
PUD APPLICATION

TITLE:

H STREET
ELEVATION

NUMBER:

A-32



H STREET ELEVATION



THE GEORGE
WASHINGTON
UNIVERSITY
WASHINGTON, DC

SCIENCE AND
ENGINEERING
COMPLEX
(SEC)

Square 55 - Washington DC 20052

Architecture
Engineering
Planning
Interior Design

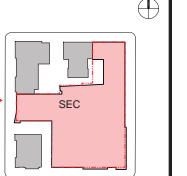
Ballinger

833 Chestnut Street
Suite 1400
Philadelphia, PA 19107
V 215.446.0900
F 215.446.0901
ballinger.com

Hickok Cole



KEY PLAN:

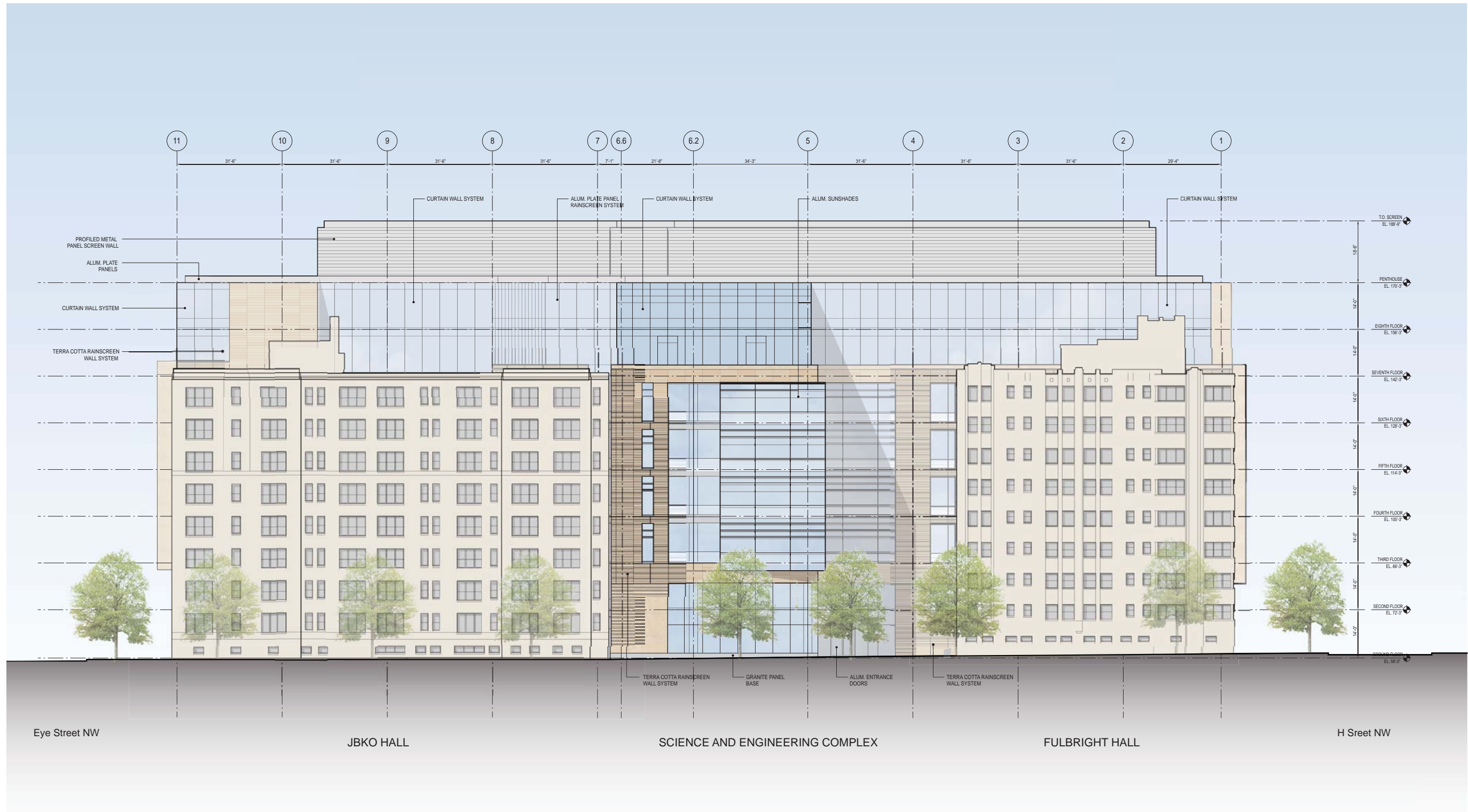


DATE:
NOVEMBER 15, 2010

SECOND-STAGE
PUD APPLICATION

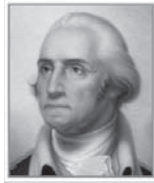
TITLE:
23rd STREET
ELEVATION

NUMBER:
A-33



23RD STREET ELEVATION





THE GEORGE
WASHINGTON
UNIVERSITY
WASHINGTON, DC

SCIENCE AND
ENGINEERING
COMPLEX
(SEC)

Square 55 - Washington DC 20052

Architecture
Engineering
Planning
Interior Design

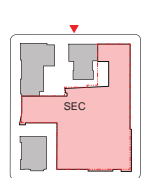
Ballinger

833 Chestnut Street
Suite 1400
Philadelphia, PA 19107
V 215.446.0900
F 215.446.0901
ballinger-sec.com

Hickok Cole



KEY PLAN:



DATE:
NOVEMBER 15, 2010

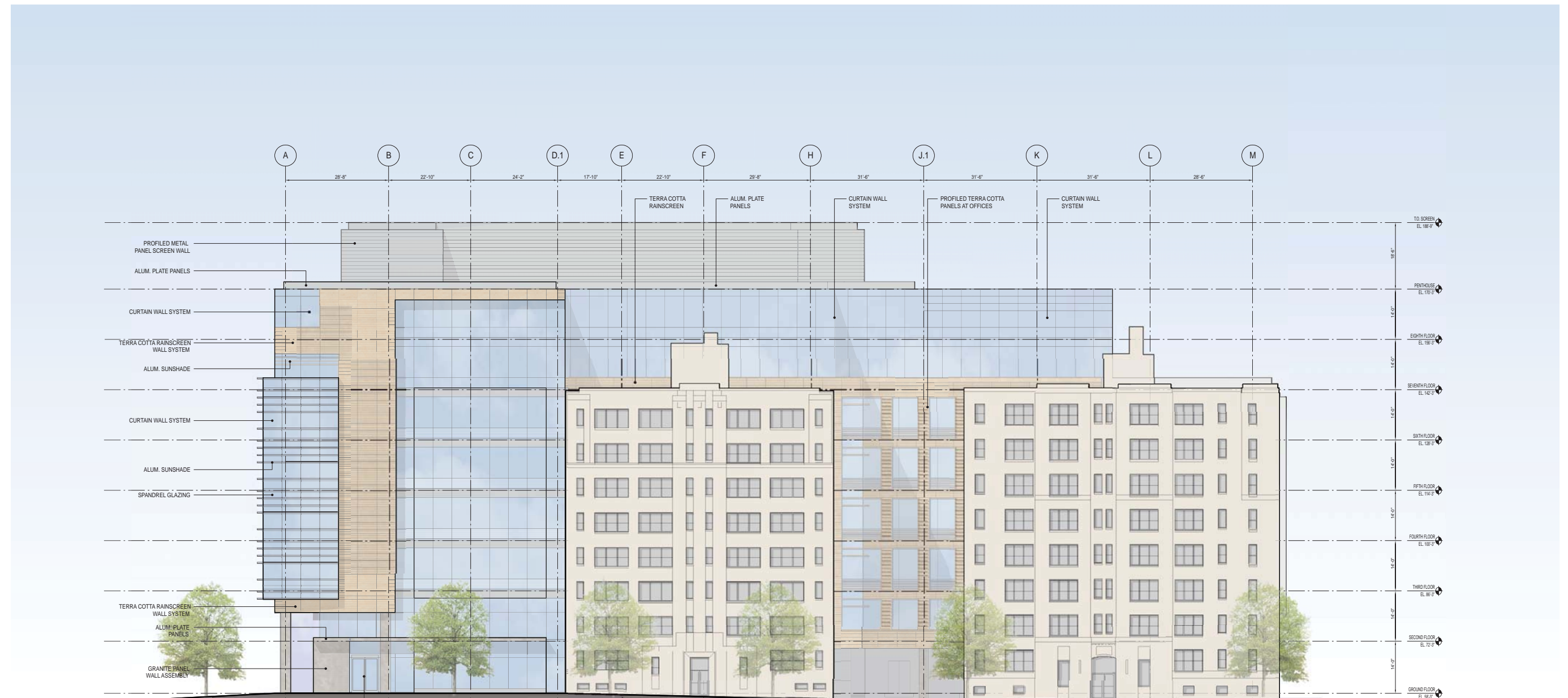
SECOND-STAGE
PUD APPLICATION

TITLE:

EYE STREET
ELEVATION

NUMBER:

A-34



22nd Street NW

SCIENCE AND ENGINEERING COMPLEX

MUNSON HALL

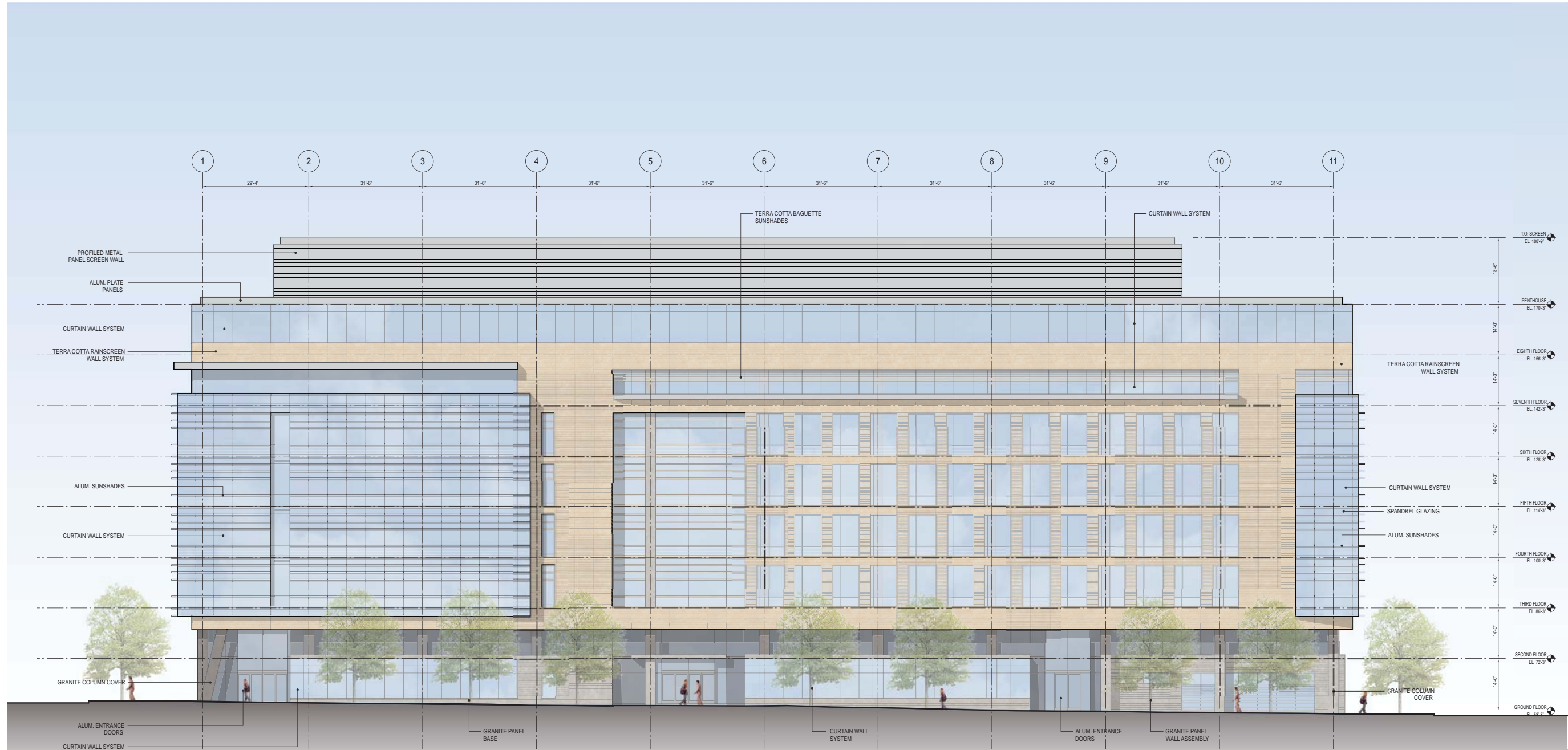
Service/Loading Entrance

JBKO HALL

23rd Street NW

EYE STREET ELEVATION



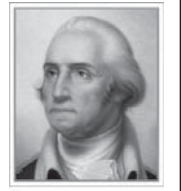
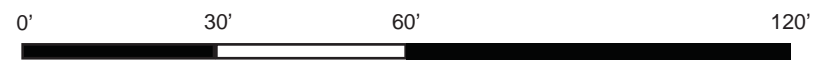


H Street NW

SCIENCE AND ENGINEERING COMPLEX

Eye Street NW

22nd STREET ELEVATION



THE GEORGE WASHINGTON UNIVERSITY
WASHINGTON DC

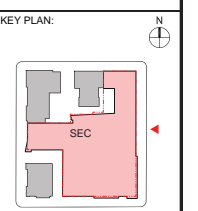
SCIENCE AND ENGINEERING COMPLEX (SEC)
Square 55 - Washington DC 20052

Architecture
Engineering
Planning
Interior Design

Ballinger

833 Chestnut Street
Suite 1400
Philadelphia, PA 19107
V 215.446.0900
F 215.446.0901
ballinger.com

Hickok Cole



DATE: NOVEMBER 15, 2010

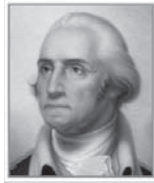
SECOND-STAGE PUD APPLICATION

TITLE:

22nd STREET ELEVATION

NUMBER:

A-35



THE GEORGE
WASHINGTON
UNIVERSITY
WASHINGTON, D.C.

SCIENCE AND
ENGINEERING
COMPLEX
(SEC)

Square 55 - Washington DC 20052

Architecture
Engineering
Planning
Interior Design

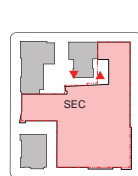
Ballinger

833 Chestnut Street Suite 1400
Philadelphia, PA 19107
V 215.446.0900
F 215.446.0901
ballinger-sec.com

Hickok Cole



KEY PLAN:



DATE:
NOVEMBER 15, 2010

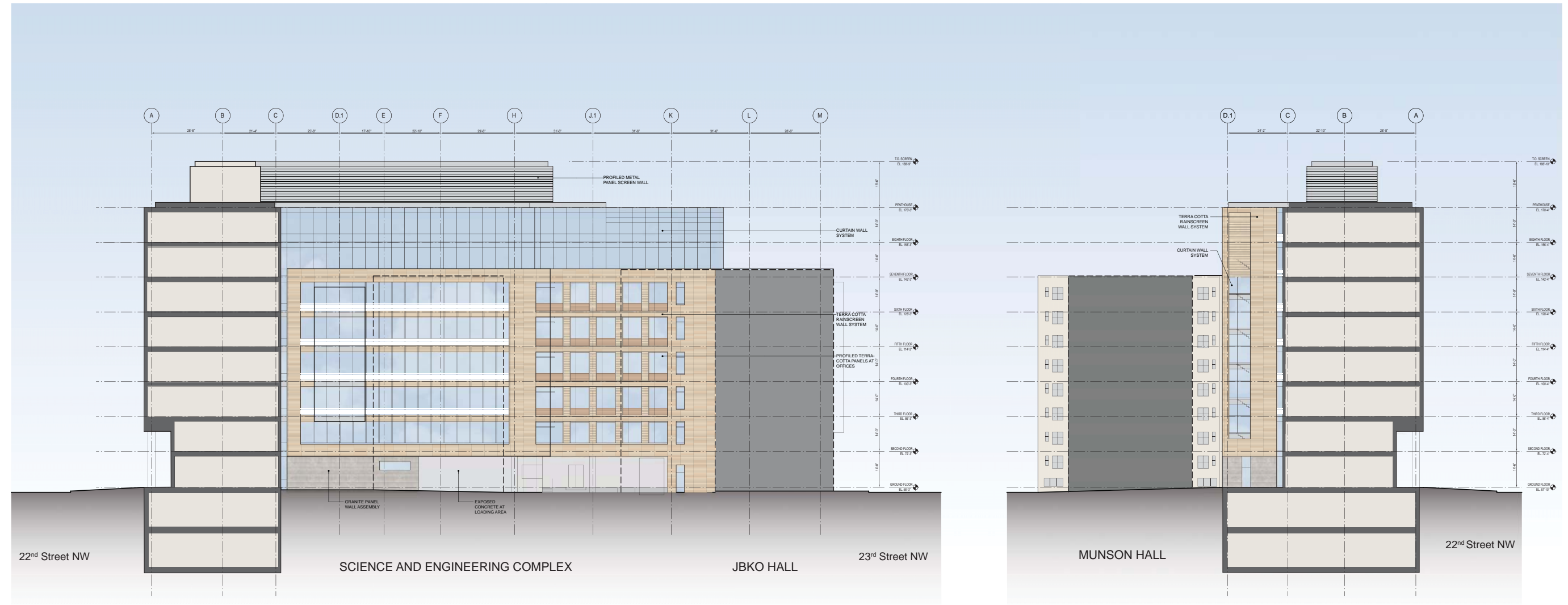
SECOND-STAGE
PUD APPLICATION

TITLE:

COURT
ELEVATIONS

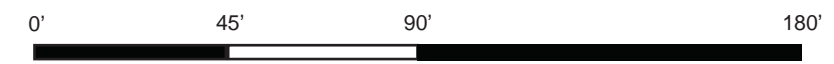
NUMBER:

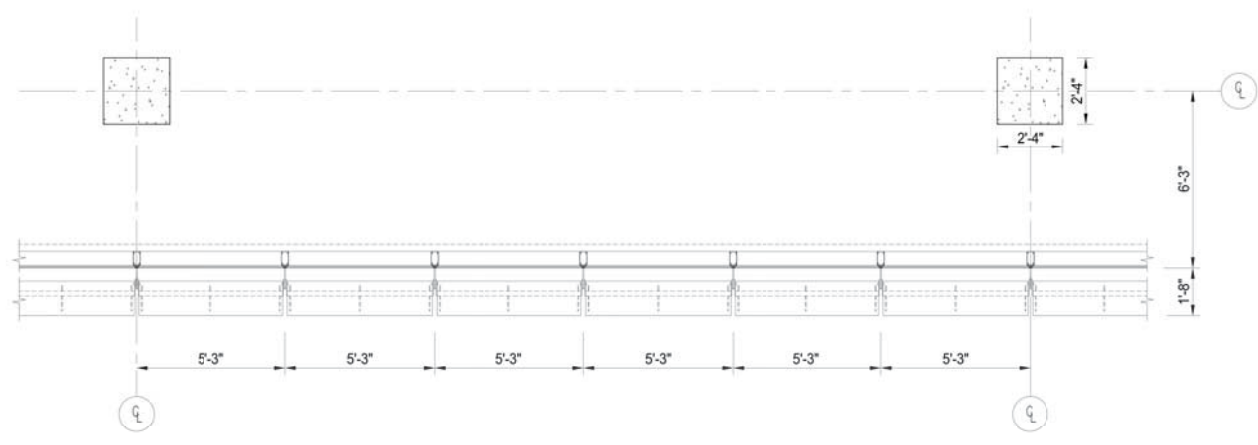
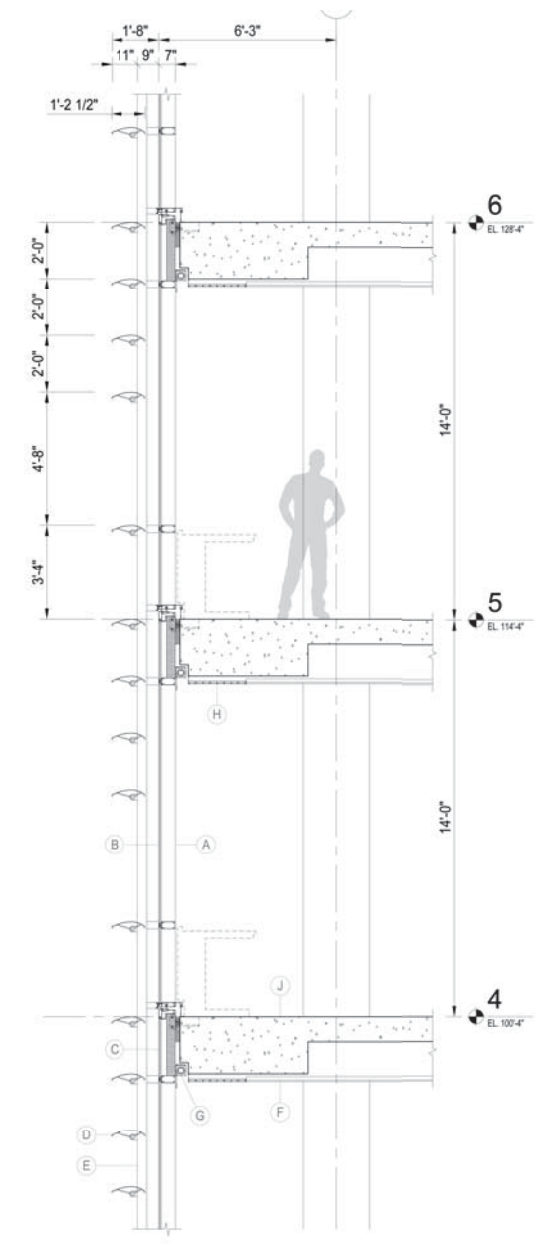
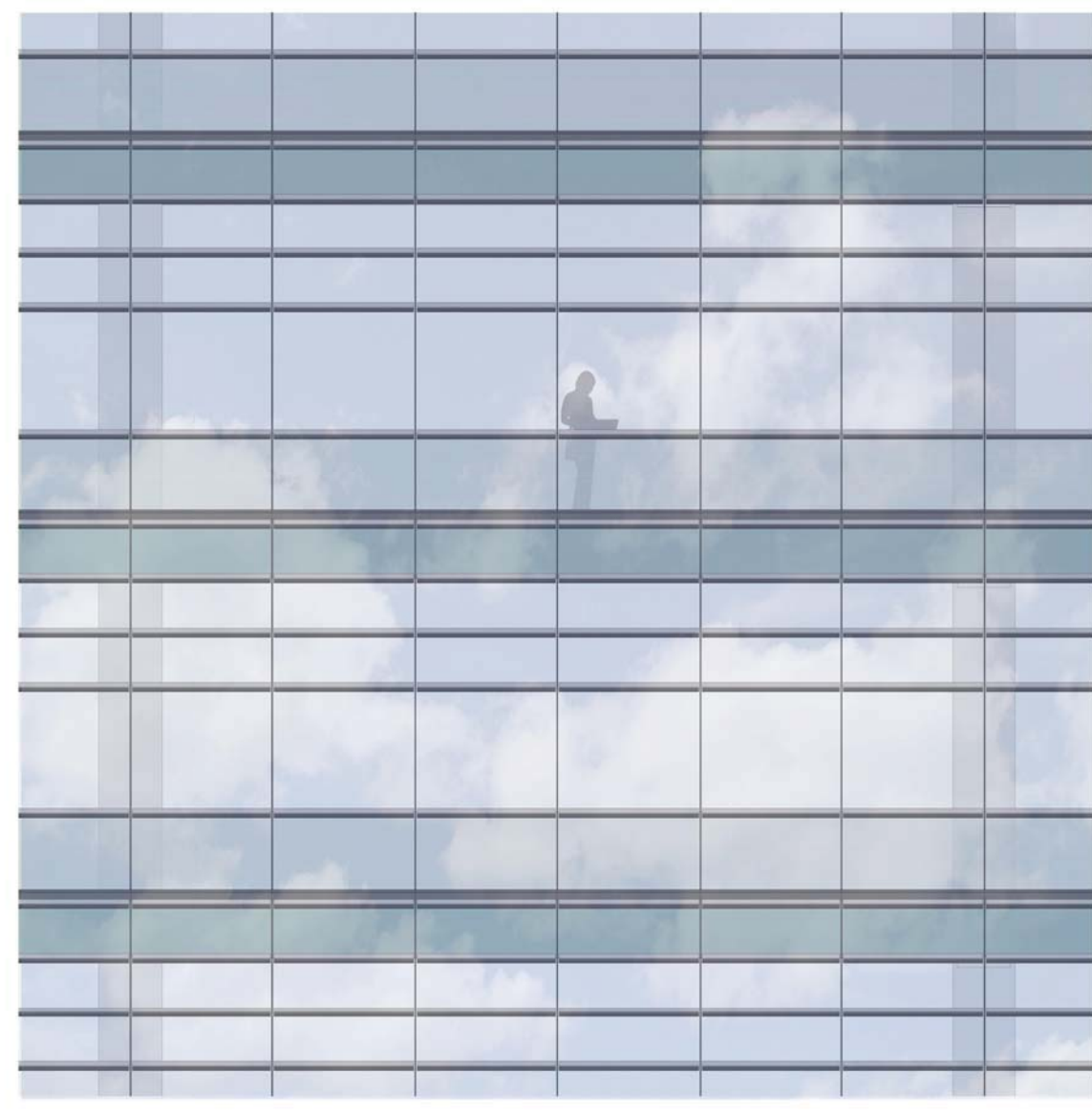
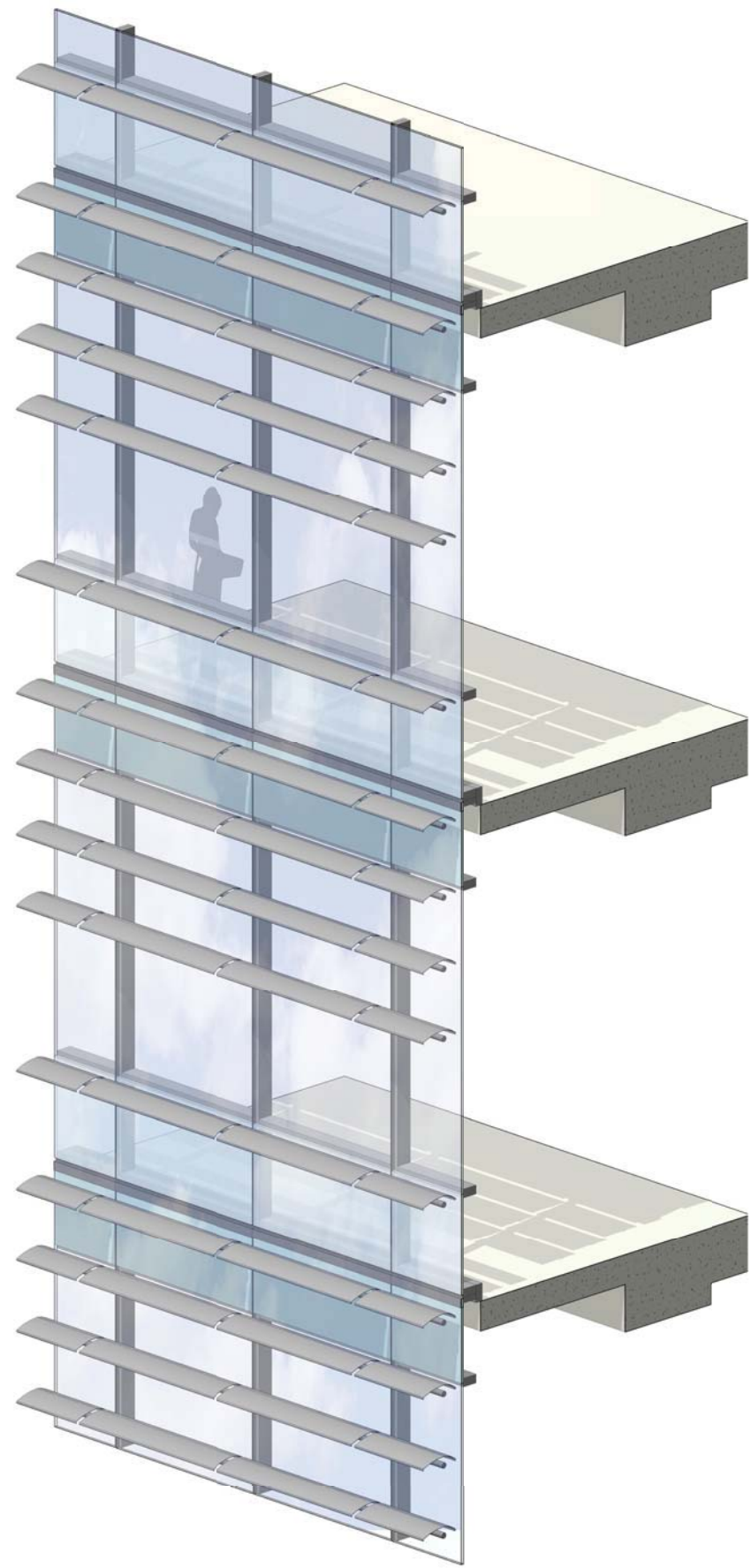
A-36



NORTH COURT ELEVATION

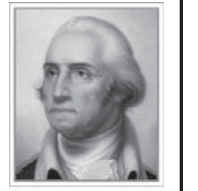
SOUTH COURT ELEVATION





- A ALUMINUM CURTAIN WALL SYSTEM
- B LOW-E INSULATING GLASS UNITS
- C SPANDREL GLASS
- D ALUMINUM SUNSHADES
- E ALUMINUM SUNSHADE SUPPORT FRAMING
- F PAINTED GWB CEILING
- G ROLLER SHADE SYSTEM
- H RADIANT PANEL
- J STRUCTURAL CONCRETE

CURTAIN WALL WITH ALUMINUM SUNSHADES PLAN



THE GEORGE WASHINGTON UNIVERSITY WASHINGTON, D.C.

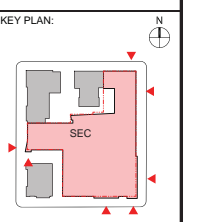
SCIENCE AND ENGINEERING COMPLEX (SEC)
Square 55 - Washington DC 20052

Architecture
Engineering
Planning
Interior Design

Ballinger

833 Chestnut Street Suite 1400
Philadelphia, PA 19107
V 215.446.0900
F 215.446.0901
ballinger-ae.com

Hickok Cole

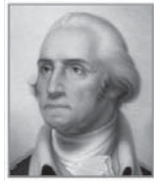


DATE: NOVEMBER 15, 2010

SECOND-STAGE PUD APPLICATION

TITLE:
ELEVATION DETAILS CURTAIN WALL AND SUNSHADES

NUMBER:
A-41



THE GEORGE
WASHINGTON
UNIVERSITY
WASHINGTON, DC

SCIENCE AND
ENGINEERING
COMPLEX
(SEC)

Square 55 - Washington DC 20052

Architecture
Engineering
Planning
Interior Design

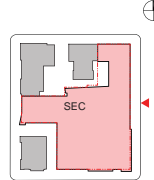
Ballinger

833 Chestnut Street Suite 1400
Philadelphia, PA 19107
V 215.446.0900
F 215.446.0901
ballinger-sec.com

Hickok Cole



KEY PLAN:



DATE:
NOVEMBER 15, 2010

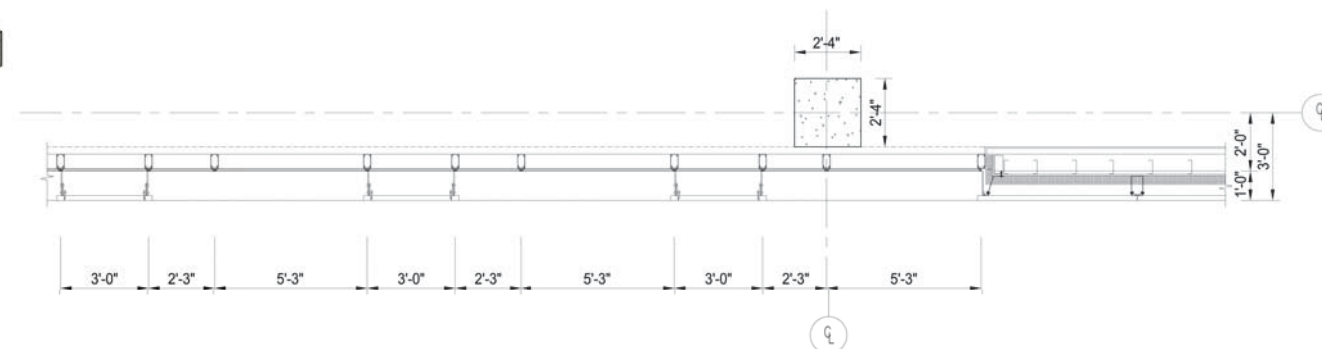
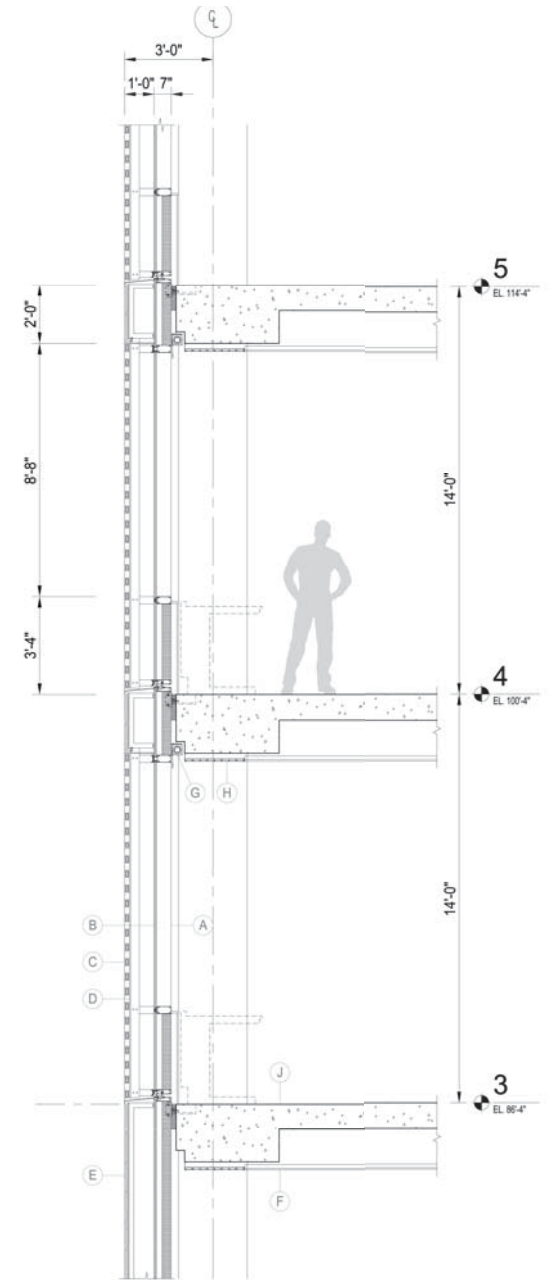
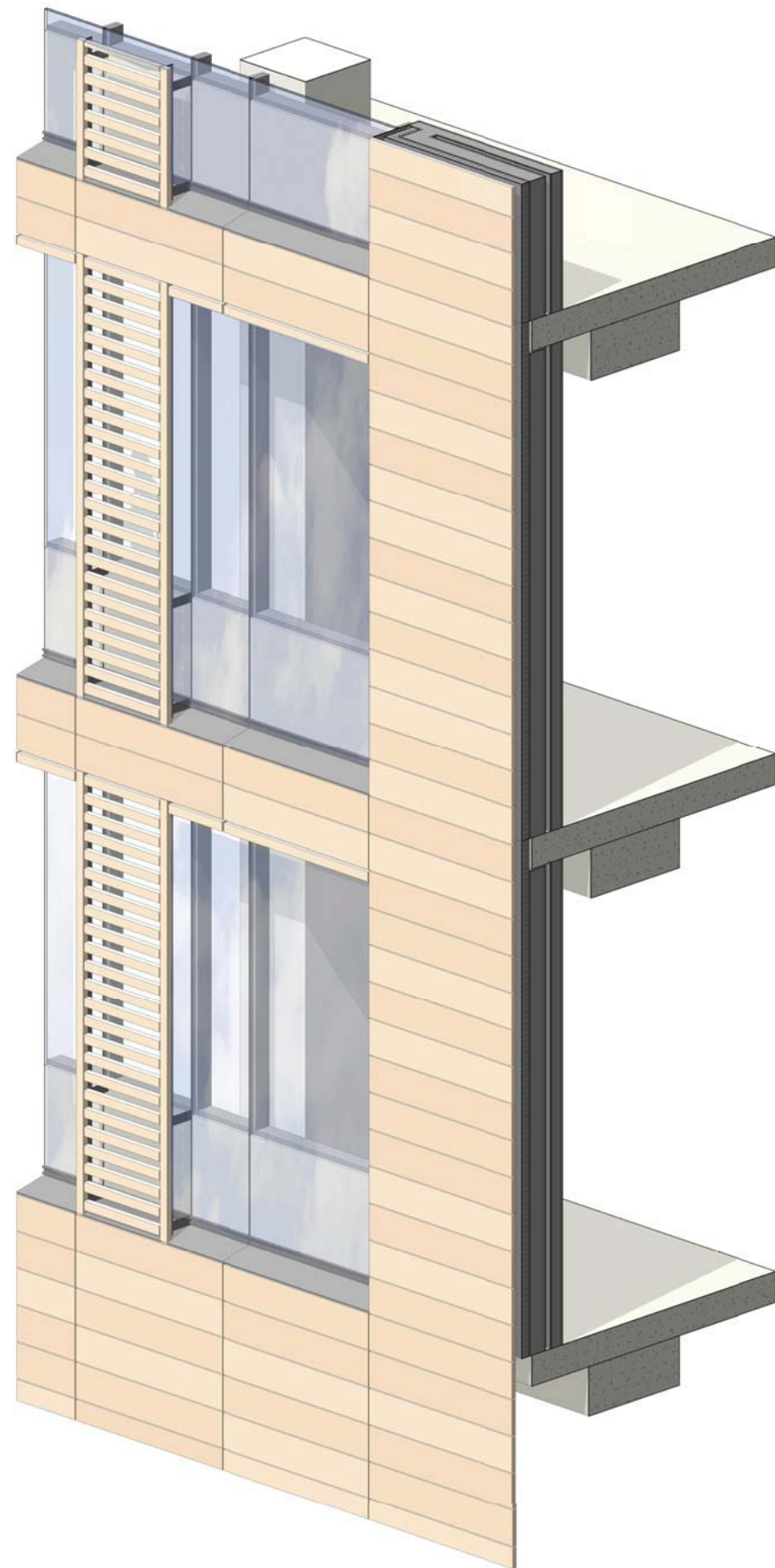
SECOND-STAGE
PUD APPLICATION

TITLE:

ELEVATION DETAILS
TERRA COTTA
SUNSHADES

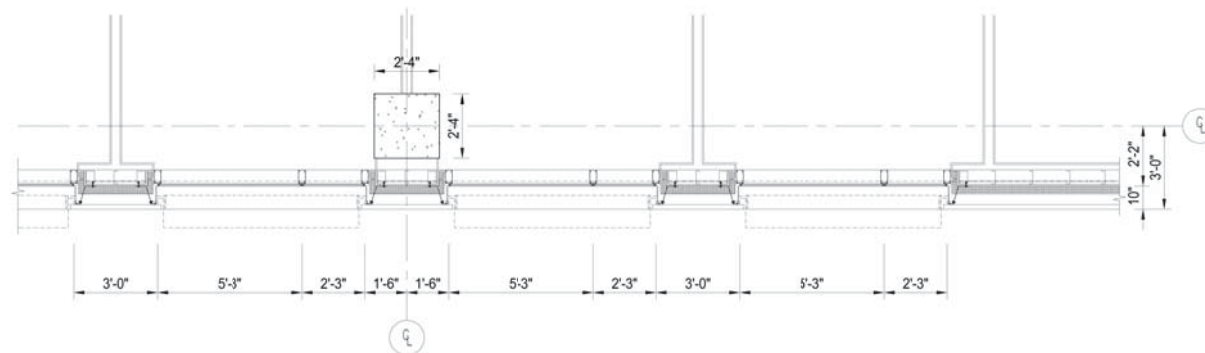
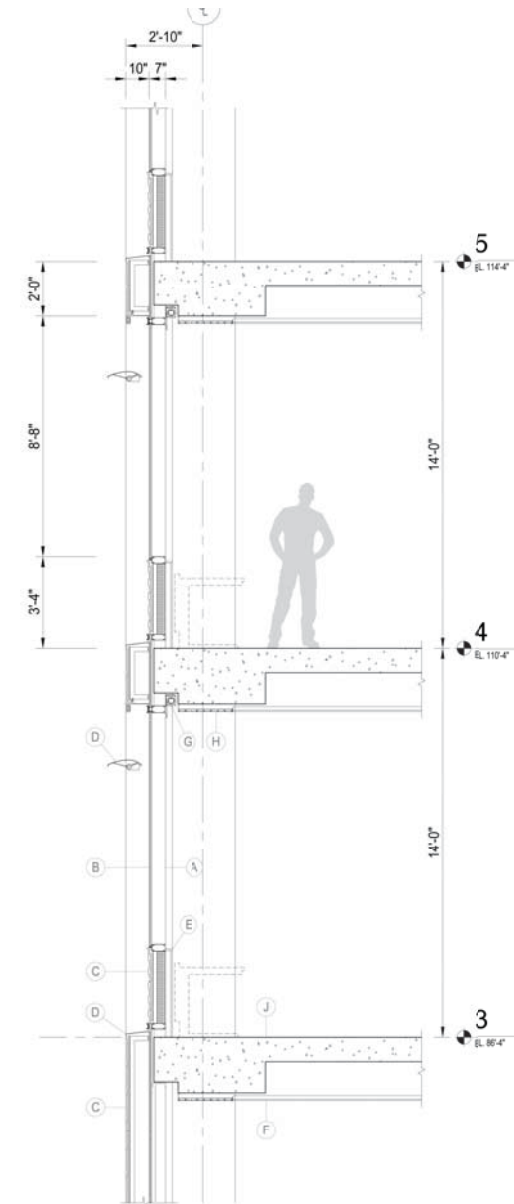
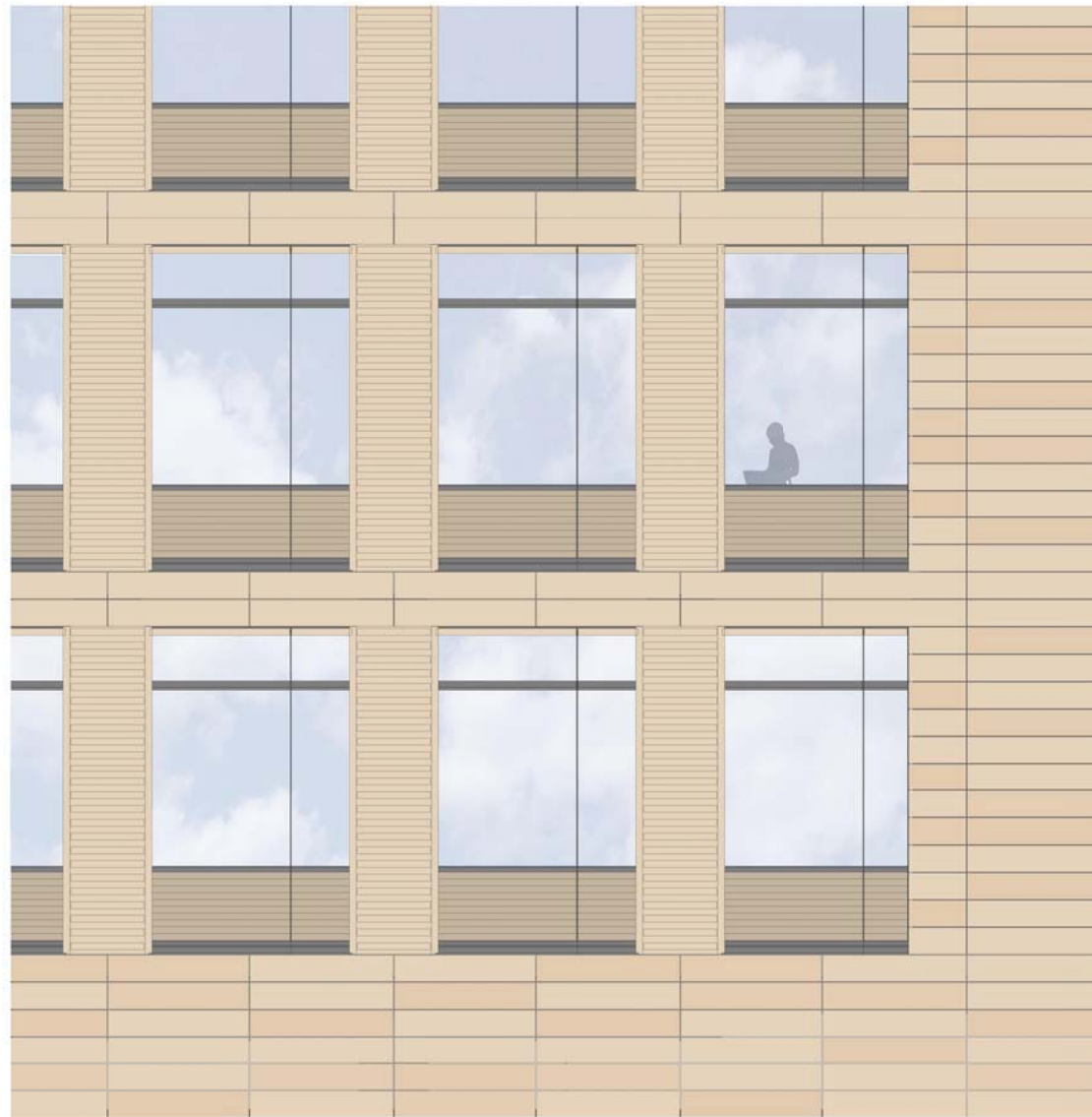
NUMBER:

A-42



- (A) ALUMINUM CURTAIN WALL SYSTEM
- (B) LOW-E INSULATING GLASS UNITS
- (C) TERRA COTTA BAGUETTE SUNSHADES
- (D) ALUMINUM BAGUETTE SUPPORT FRAMING
- (E) TERRA COTTA TILES
- (F) PAINTED GWB CEILING
- (G) ROLLER SHADE SYSTEM
- (H) RADIANT PANEL
- (J) STRUCTURAL CONCRETE

TERRA COTTA RAINSCREEN WALL WITH TERRA COTTA SUNSHADES



- A ALUMINUM CURTAIN WALL SYSTEM
- B LOW-E INSULATING GLASS UNITS
- C TERRA COTTA TILES
- D ALUMINUM SILL
- E EXTRUDED ALUMINUM SILL CLOSURE
- F PAINTED GWB CEILING
- G ROLLER SHADE SYSTEM
- H RADIANT PANEL
- J STRUCTURAL CONCRETE

TERRA COTTA RAINSCREEN WALL WITH RECESSED TERRA COTTA PANELS



THE GEORGE
WASHINGTON
UNIVERSITY
WASHINGTON, DC

SCIENCE AND
ENGINEERING
COMPLEX
(SEC)

Square 55 - Washington DC 20052

Architecture
Engineering
Planning
Interior Design

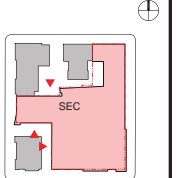
Ballinger

833 Chestnut Street
Suite 1400
Philadelphia, PA 19107
V 215.446.0900
F 215.446.0901
ballinger.com

Hickok Cole



KEY PLAN:



DATE:
NOVEMBER 15, 2010

SECOND-STAGE
PUD APPLICATION

TITLE:
ELEVATION DETAILS
TERRA COTTA
PANELS

NUMBER:
A-43