

THE GEORGE WASHINGTON UNIVERSITY
WASHINGTON, D.C.

SCIENCE AND ENGINEERING COMPLEX (SEC)

Square 55 - Washington DC 20052

Architecture
Engineering
Planning
Interior Design

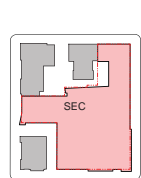
Ballinger

833 Chestnut Street
Suite 1400
Philadelphia, PA 19107
V 215.446.0900
F 215.446.0901
ballinger-sec.com

Hickok Cole



KEY PLAN:



DATE:
NOVEMBER 15, 2010

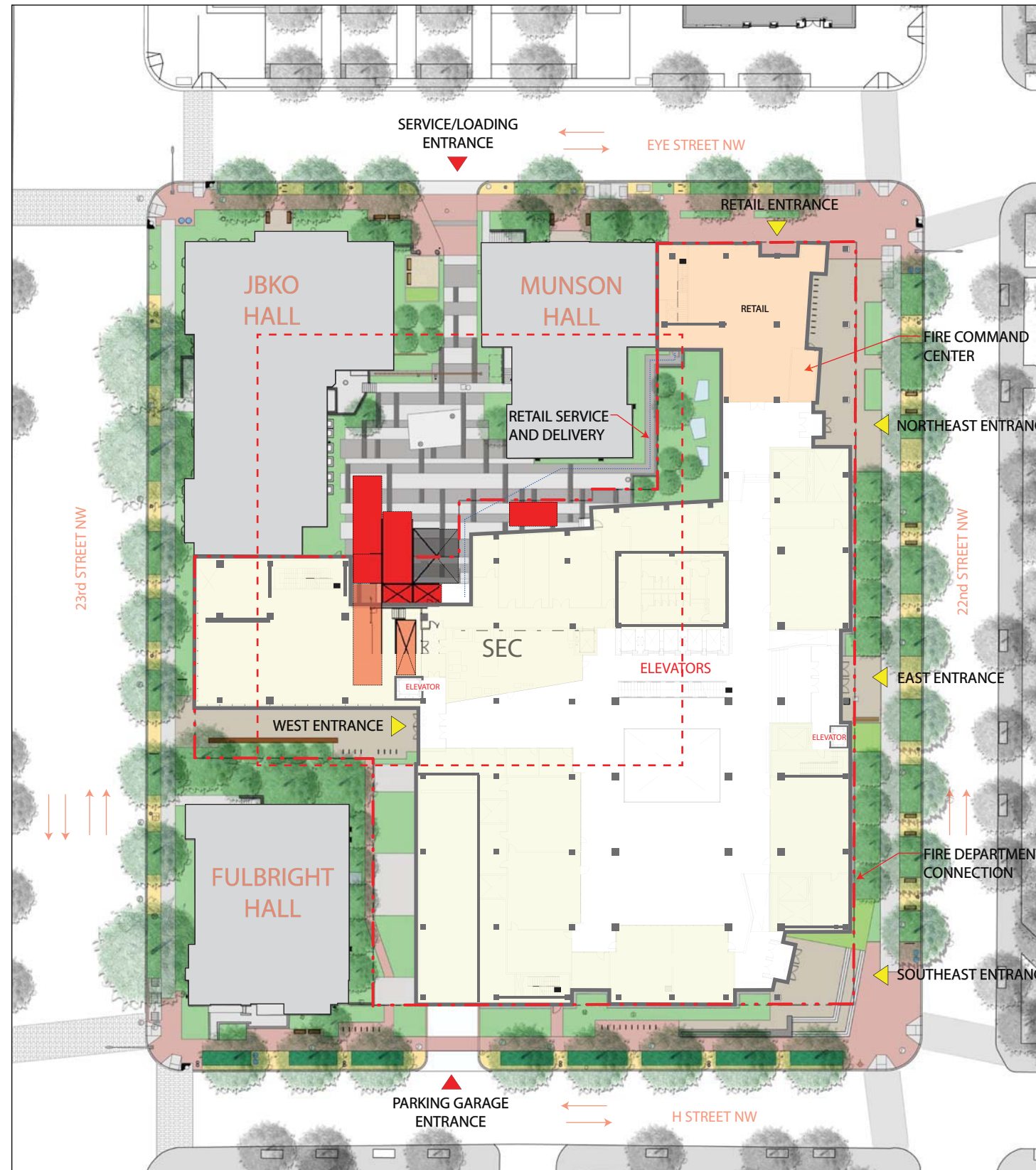
SECOND-STAGE
PUD APPLICATION

TITLE:

CIRCULATION
AND LOADING
PLAN

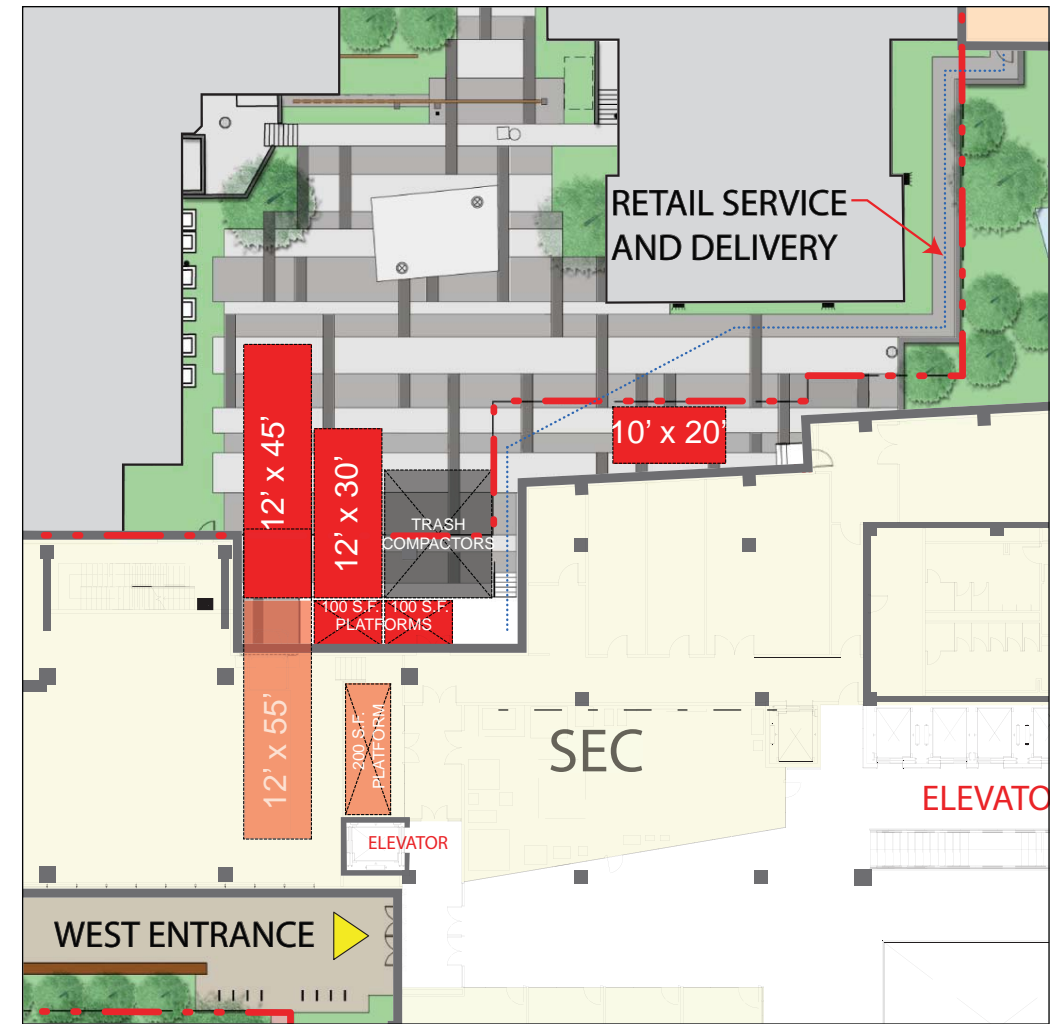
NUMBER:

A-21



CIRCULATION AND LOADING PLAN

0' 50' 100' 200'
SCALE: 1" = 50' - 0"



CIRCULATION AND LOADING PLAN - DETAIL

- VEHICULAR ENTRANCE
- PEDESTRIAN ENTRANCE
- LOADING BERTH/SERVICE SPACE
- 55' LOADING BERTH
- COMPACTORS

NOTE:

- ONE 12' x 55' LOADING BERTH PROVIDED
 - Approximately 1 Scheduled Delivery per Quarter
 - Unloaded by Crane Inside Building
 - 14' Vertical Clearance
 - 200 S.F. Adjacent Loading Platform

- ONE 12' X 45' LOADING BERTHS PROVIDED
 - Daily Deliveries
 - 14' Vertical Clearance

- ONE 12' X 30' LOADING BERTHS PROVIDED
 - Daily Deliveries
 - 14' Vertical Clearance

- ONE 10'x 20' SERVICE SPACE PROVIDED
 - Daily Parcel/Courier Deliveries
 - 10' Vertical Clearance

- THREE LOADING PLATFORMS PROVIDED
 - 2 @ 100 S.F. Each
 - 1 @ 200 S.F.

NOTE: INTERIOR LAYOUTS ARE ILLUSTRATIVE ONLY AND SUBJECT TO CHANGE ON FINAL PLAN