

THE GEORGE
WASHINGTON
UNIVERSITY
WASHINGTON, D.C.

SCIENCE AND
ENGINEERING
COMPLEX
(SEC)

Square 55 - Washington DC 20052

Architecture
Engineering
Planning
Interior Design

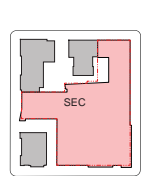
Ballinger

833 Chestnut Street
Suite 1400
Philadelphia, PA 19107
V 215.446.0900
F 215.446.0901
ballinger.com

Hickok Cole



KEY PLAN:



DATE:
NOVEMBER 15, 2010

SECOND-STAGE
PUD APPLICATION

TITLE:

G4 & G3
PARKING PLAN

NUMBER:

A-11

PARKING SYMBOLS

FULL SIZE SPACE

COMPACT SPACE

ELECTRIC VEHICLE
(Charging Space)

LEVE VEHICLE SPACE
(Low Emissions/Fuel Efficient Vehicle)

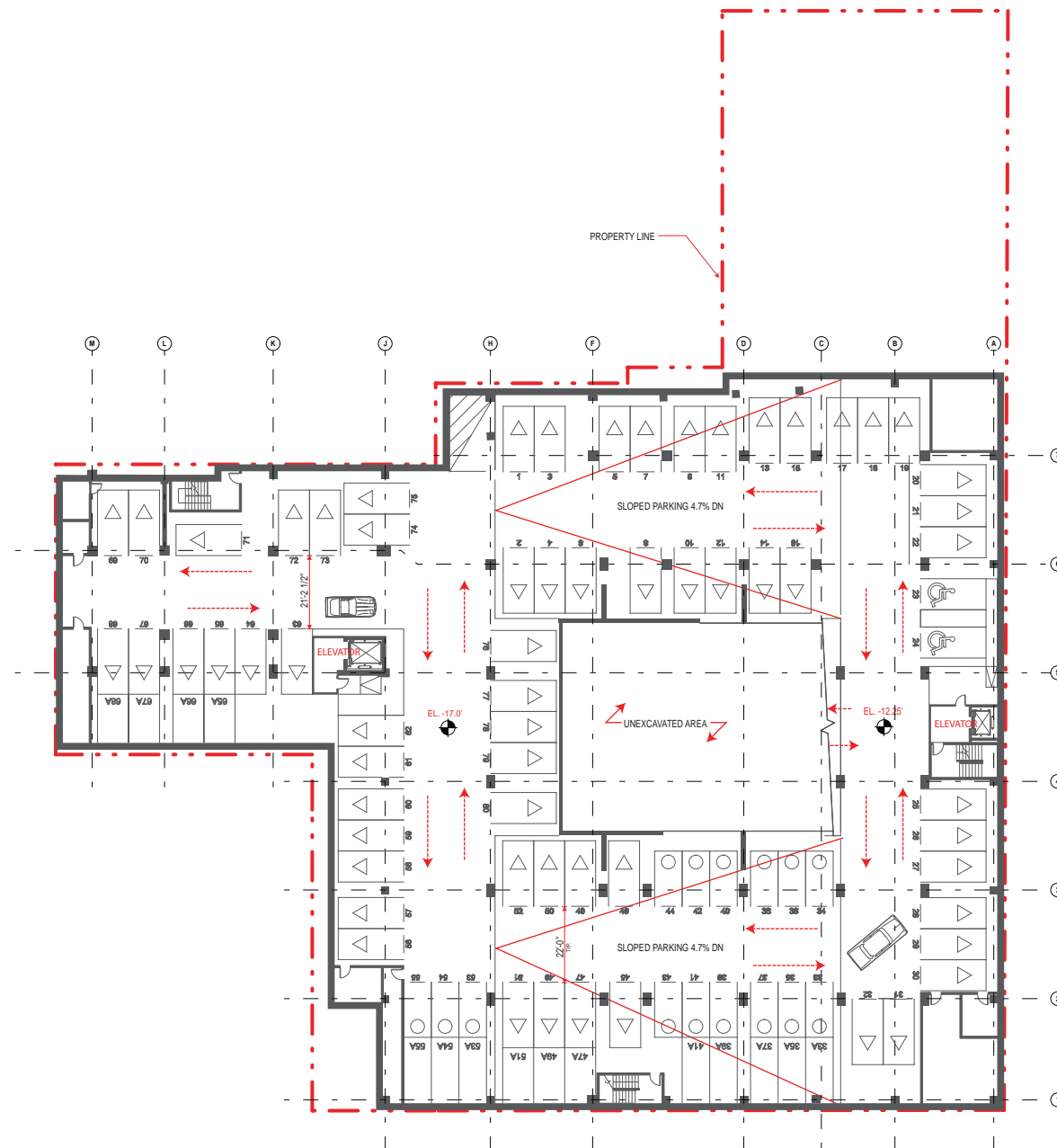
VAN ONLY SPACE

HANDICAPPED SPACE

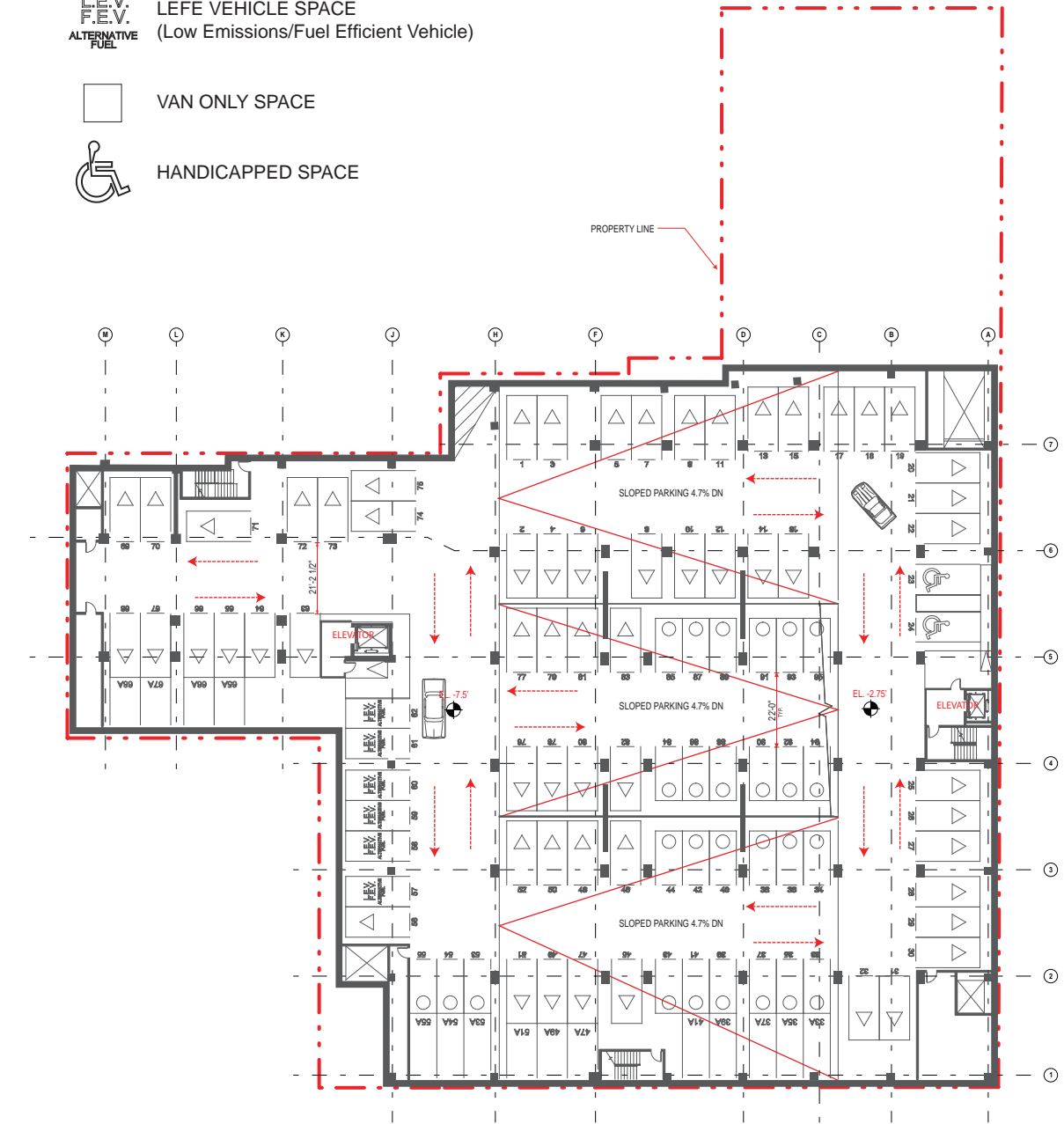
PARKING TABULATION

| | Standard (9' x 19') | Compact (8' x 16') | Total | Valet | Total |
|-----------|------------------------|-----------------------|-------|-------|-------|
| G-1 LEVEL | 43 | 27 | 70 | 11 | 81 |
| G-2 LEVEL | 55 | 27 | 82 | 11 | 93 |
| G-3 LEVEL | 68 | 27 | 95 | 15 | 110 |
| G-4 LEVEL | 65 | 15 | 80 | 15 | 95 |
| | 231 | 96 | 327 | 52 | *379 |

*379 TOTAL PARKING SPACES PROVIDED INCLUDING VALET SPACES



G4 PARKING PLAN



G3 PARKING PLAN

0' 50' 100' 200'
SCALE: 1" = 50' - 0"

NOTE: Interior layouts are illustrative only and subject to change on final plan.
NOTE: Parking relief for use of tandem/valet spaces was granted per previously approved 2007 Foggy Bottom Campus Plan. In accordance with this approval, the University may modify the parking garage operation further to add or remove tandem/valet spaces to accommodate parking demand needs.



THE GEORGE
WASHINGTON
UNIVERSITY
WASHINGTON, DC

SCIENCE AND
ENGINEERING
COMPLEX
(SEC)

Square 55 - Washington DC 20052

Architecture
Engineering
Planning
Interior Design

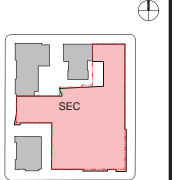
Ballinger

833 Chestnut Street
Suite 1400
Philadelphia, PA 19107
V 215.446.0900
F 215.446.0901
ballinger.com

Hickok Cole



KEY PLAN:



DATE:
NOVEMBER 15, 2010

SECOND-STAGE
PUD APPLICATION

TITLE:
G2 & G1
PARKING PLAN

NUMBER:
A-12

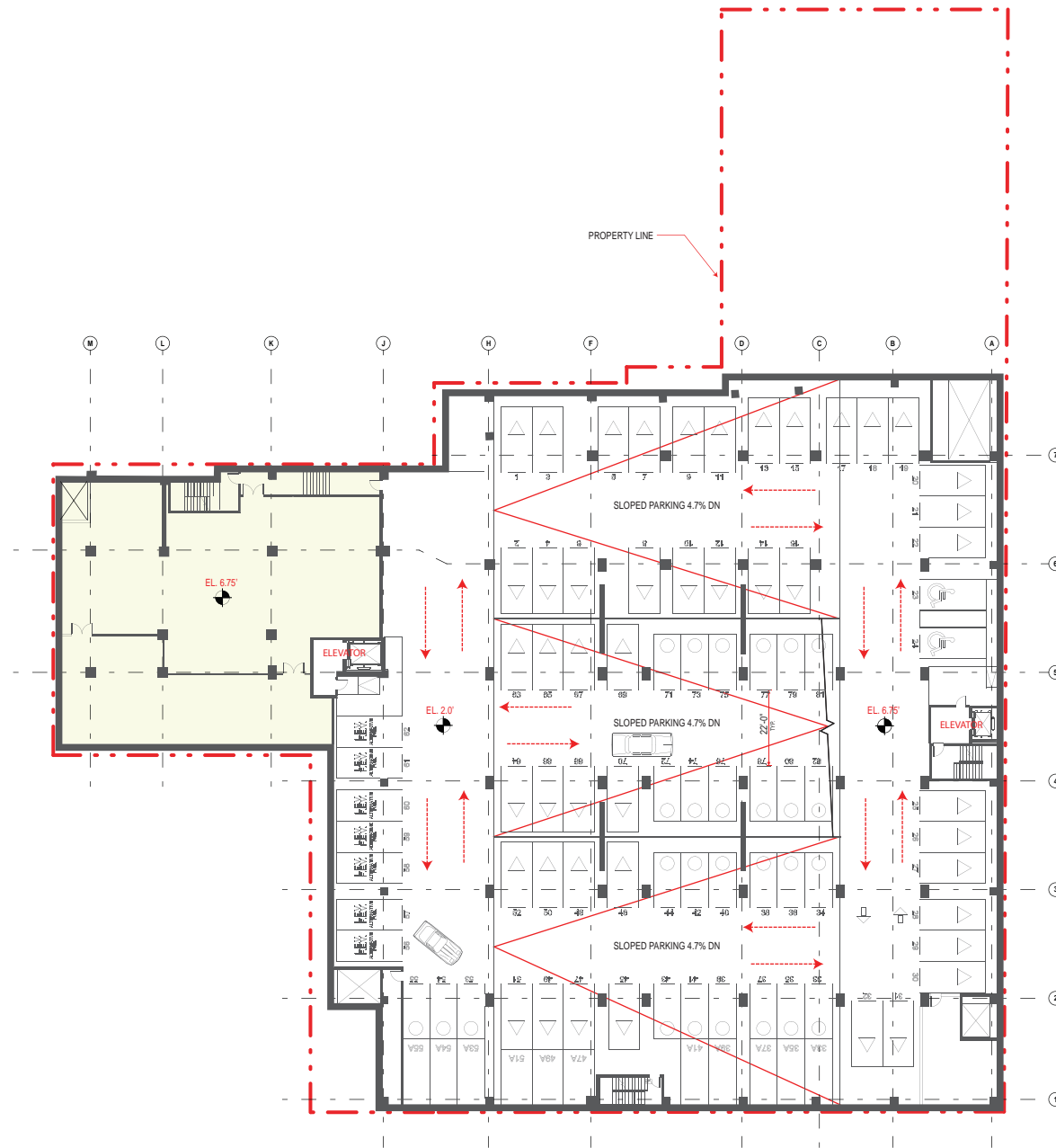
PARKING SYMBOLS

- FULL SIZE SPACE
- COMPACT SPACE
- ELECTRIC VEHICLE (Charging Space)
- LEVE VEHICLE SPACE (Low Emissions/Fuel Efficient Vehicle)
- VAN ONLY SPACE
- HANDICAPPED SPACE

PARKING TABULATION

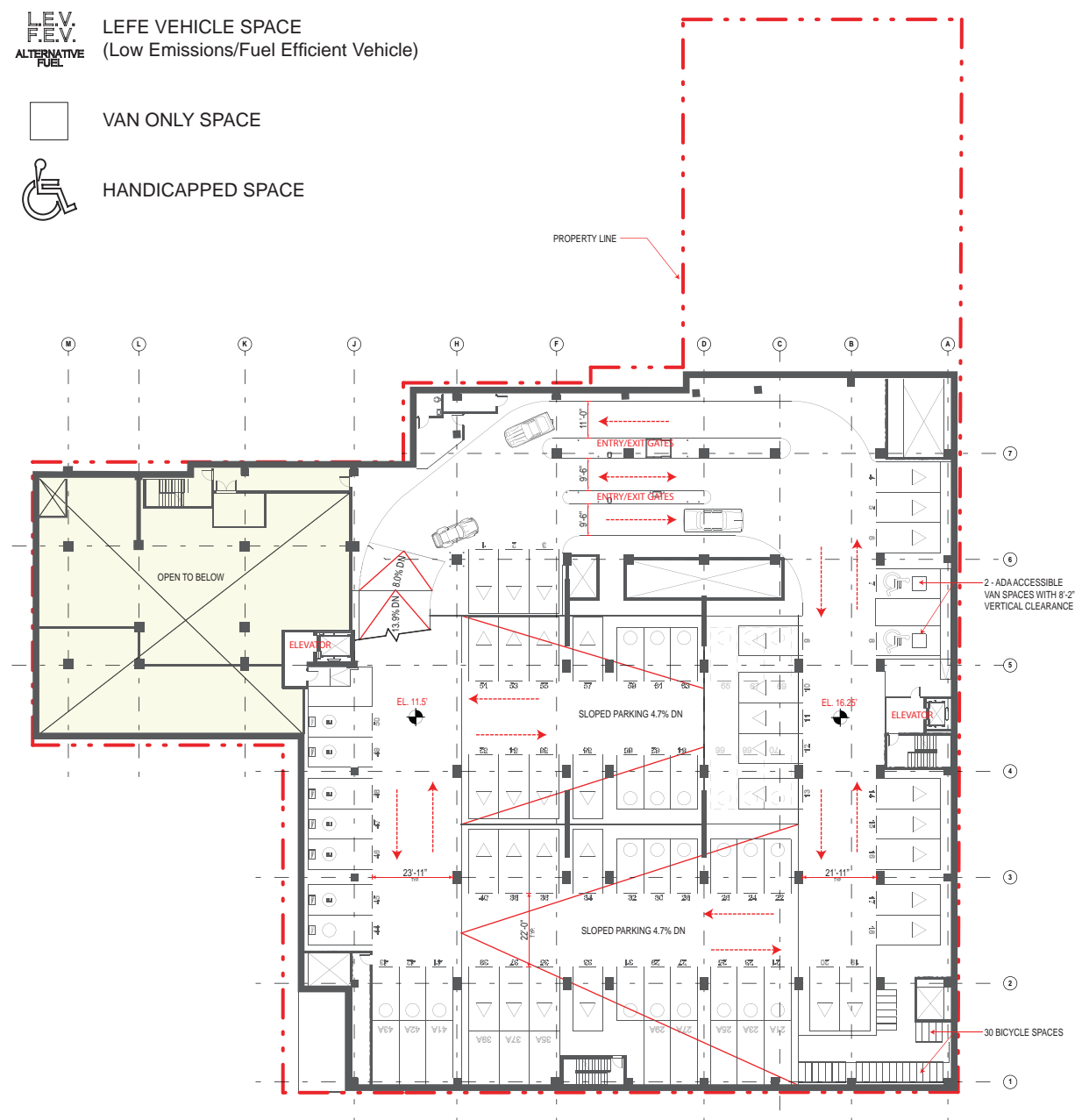
| | Standard (9' x 19') | Compact (8' x 16') | Total | Valet | Total |
|-----------|---------------------|--------------------|-------|-------|-------|
| G-1 LEVEL | 43 | 27 | 70 | 11 | 81 |
| G-2 LEVEL | 55 | 27 | 82 | 11 | 93 |
| G-3 LEVEL | 68 | 27 | 95 | 15 | 110 |
| G-4 LEVEL | 65 | 15 | 80 | 15 | 95 |
| | 231 | 96 | 327 | 52 | *379 |

*379 TOTAL PARKING SPACES PROVIDED INCLUDING VALET SPACES



G2 PARKING PLAN

0' 50' 100' 200'
SCALE: 1"= 50' - 0"



G1 PARKING PLAN

NOTE: Interior layouts are illustrative only and subject to change on final plan.
NOTE: Parking relief for use of tandem/valet spaces was granted per previously approved 2007 Foggy Bottom Campus Plan. In accordance with this approval, the University may modify the parking garage operation further to add or remove tandem/valet spaces to accommodate parking demand needs.



THE GEORGE
WASHINGTON
UNIVERSITY
WASHINGTON DC

SCIENCE AND
ENGINEERING
COMPLEX
(SEC)

Square 55 - Washington DC 20052

Architecture
Engineering
Planning
Interior Design

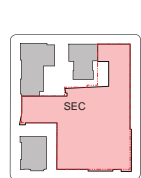
Ballinger

833 Chestnut Street
Suite 1400
Philadelphia, PA 19107
V 215.446.0900
F 215.446.0901
ballinger-sec.com

Hickok Cole



KEY PLAN:



DATE:
NOVEMBER 15, 2010

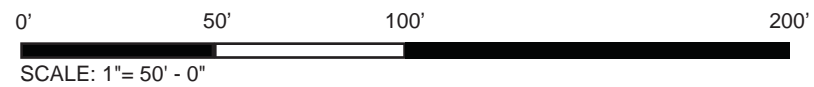
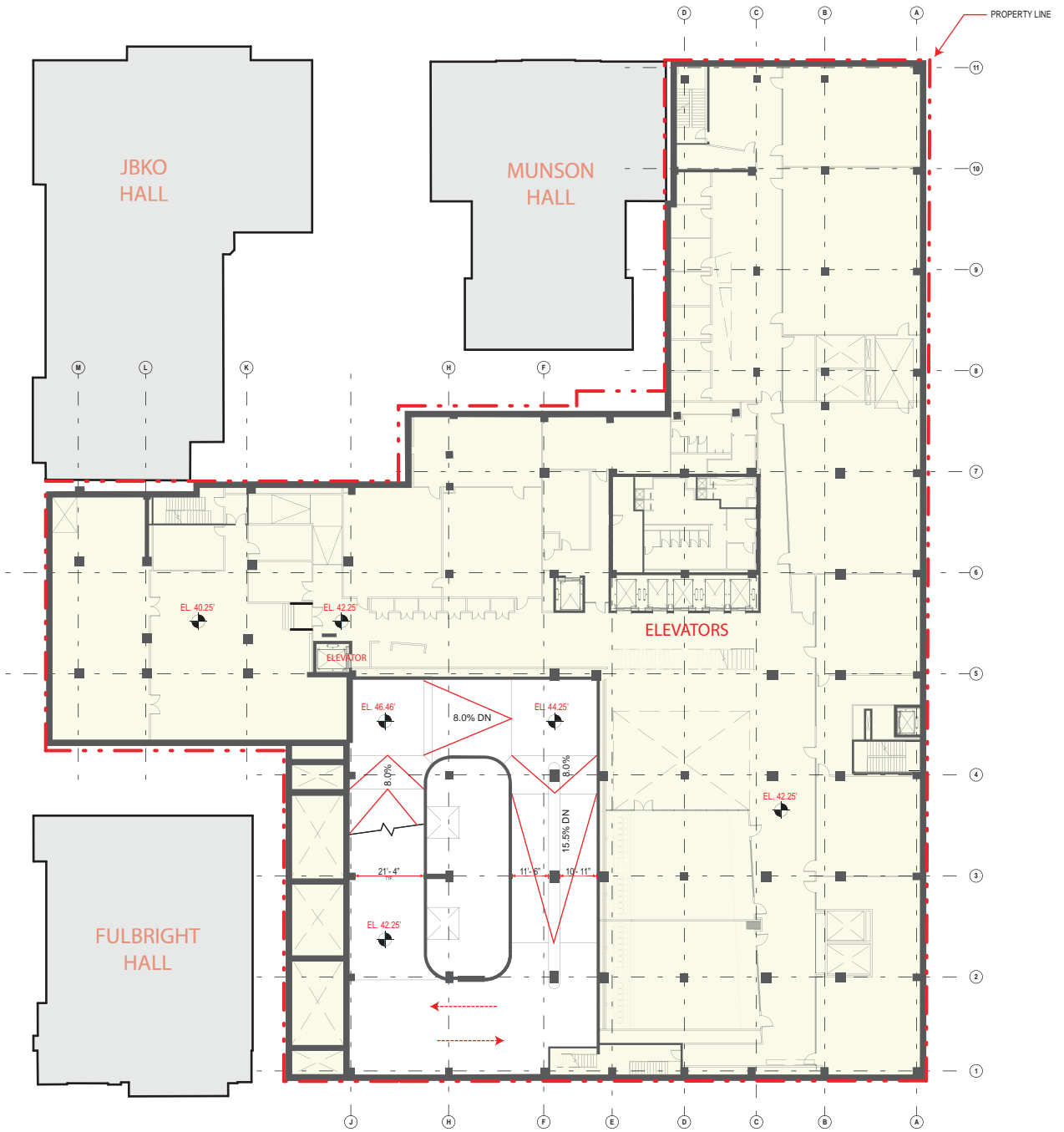
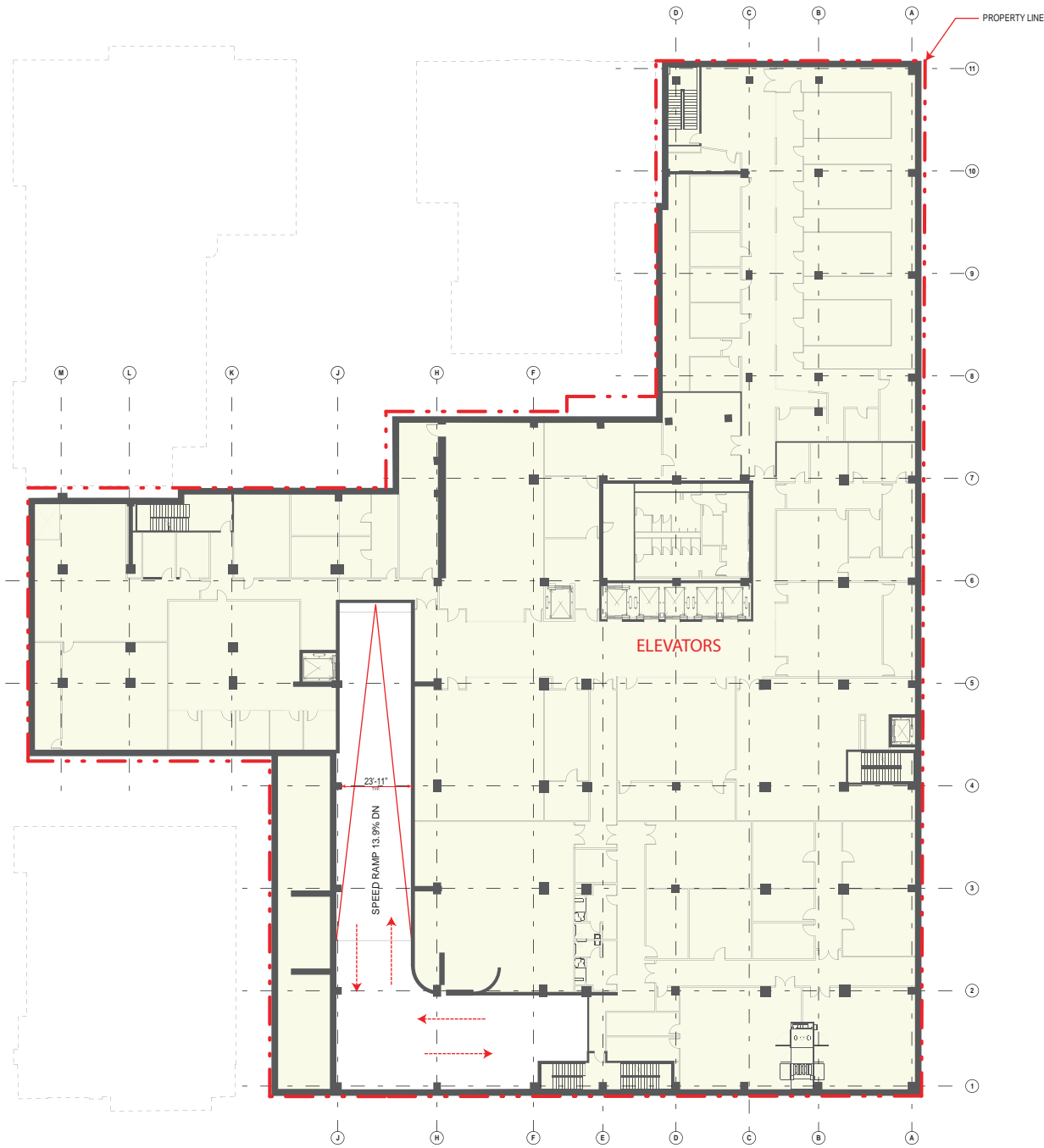
SECOND-STAGE
PUD APPLICATION

TITLE:

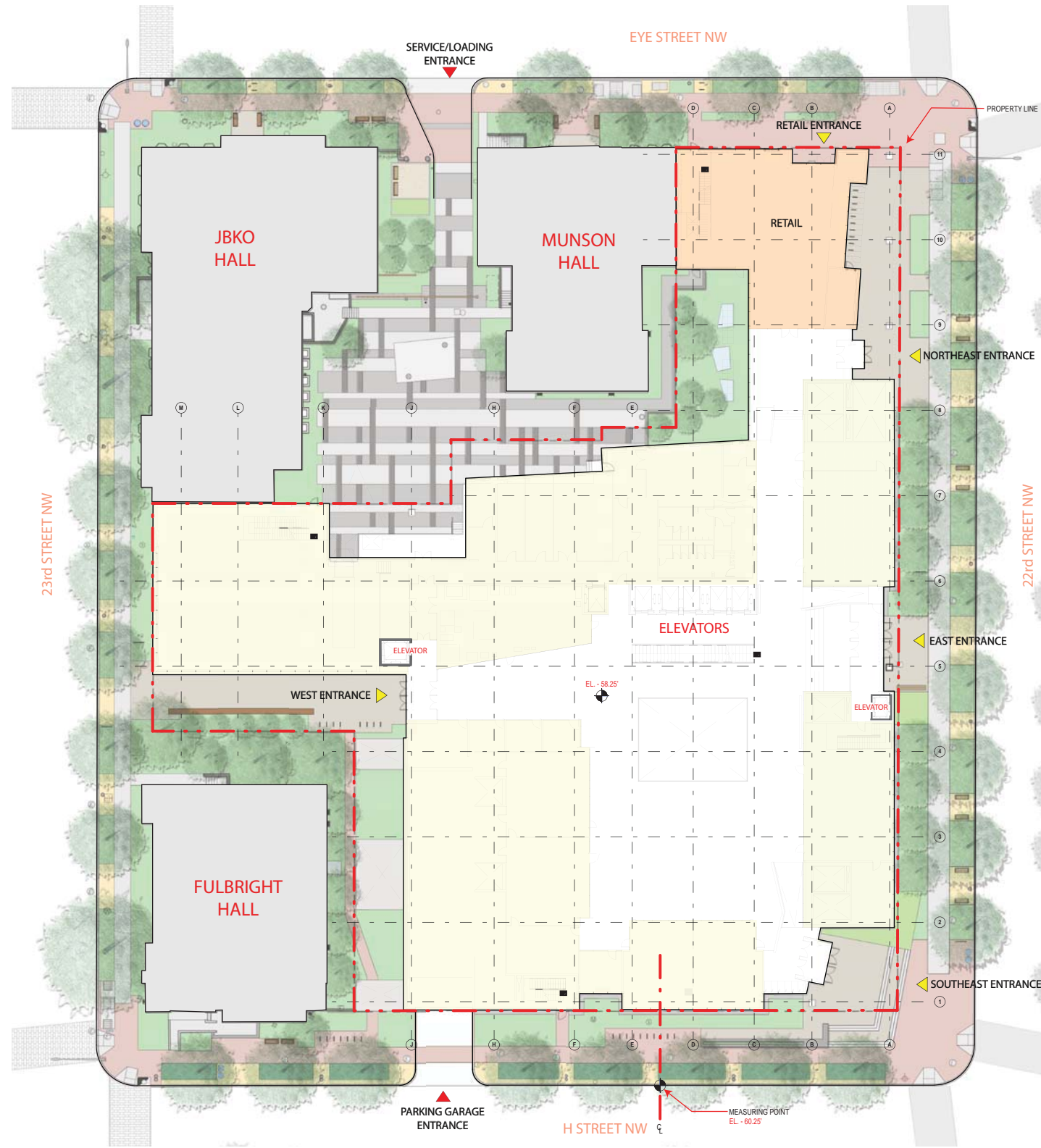
LOWER LEVEL
2 & 1 PLAN

NUMBER:

A-13



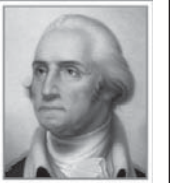
NOTE: INTERIOR LAYOUTS ARE ILLUSTRATIVE ONLY
AND SUBJECT TO CHANGE ON FINAL PLAN



GROUND FLOOR PLAN



NOTE: INTERIOR LAYOUTS ARE ILLUSTRATIVE ONLY AND SUBJECT TO CHANGE ON FINAL PLAN



THE GEORGE WASHINGTON UNIVERSITY
WASHINGTON, DC

SCIENCE AND ENGINEERING COMPLEX (SEC)

Square 55 - Washington DC 20052

Architecture
Engineering
Planning
Interior Design

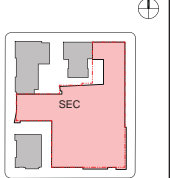
Ballinger

833 Chestnut Street
Suite 1400
Philadelphia, PA 19107
V 215.446.0900
F 215.446.0901
ballinger-ae.com

Hickok Cole



KEY PLAN:



DATE:
NOVEMBER 15, 2010

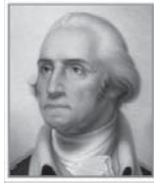
SECOND-STAGE
PUD APPLICATION

TITLE:

GROUND FLOOR PLAN

NUMBER:

A-14



THE GEORGE WASHINGTON UNIVERSITY
WASHINGTON, D.C.

SCIENCE AND ENGINEERING COMPLEX (SEC)

Square 55 - Washington DC 20052

Architecture
Engineering
Planning
Interior Design

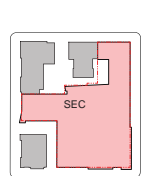
Ballinger

833 Chestnut Street Suite 1400
Philadelphia, PA 19107
V 215.446.0900
F 215.446.0901
ballinger-sec.com

Hickok Cole



KEY PLAN:



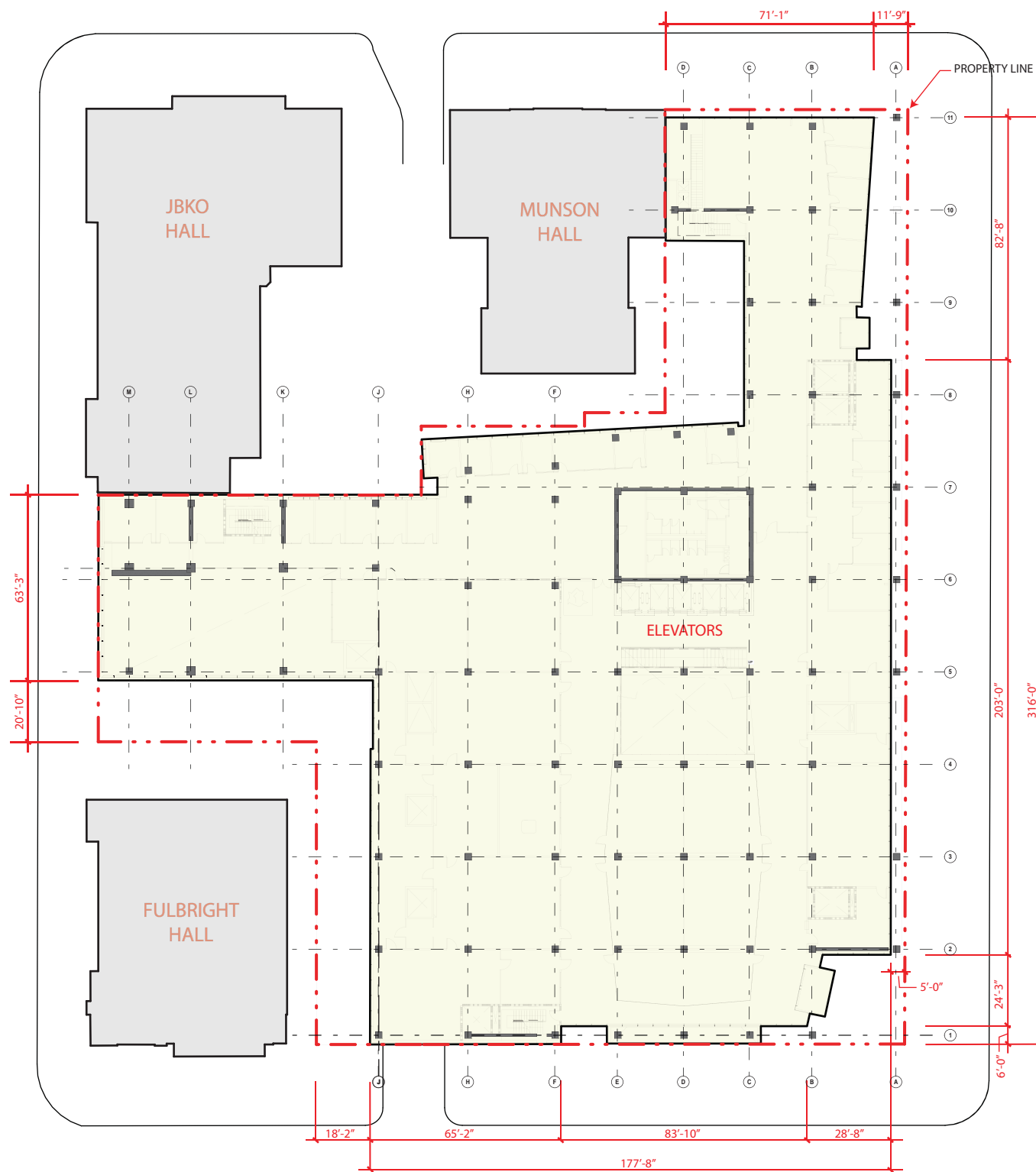
DATE:
NOVEMBER 15, 2010

SECOND-STAGE
PUD APPLICATION

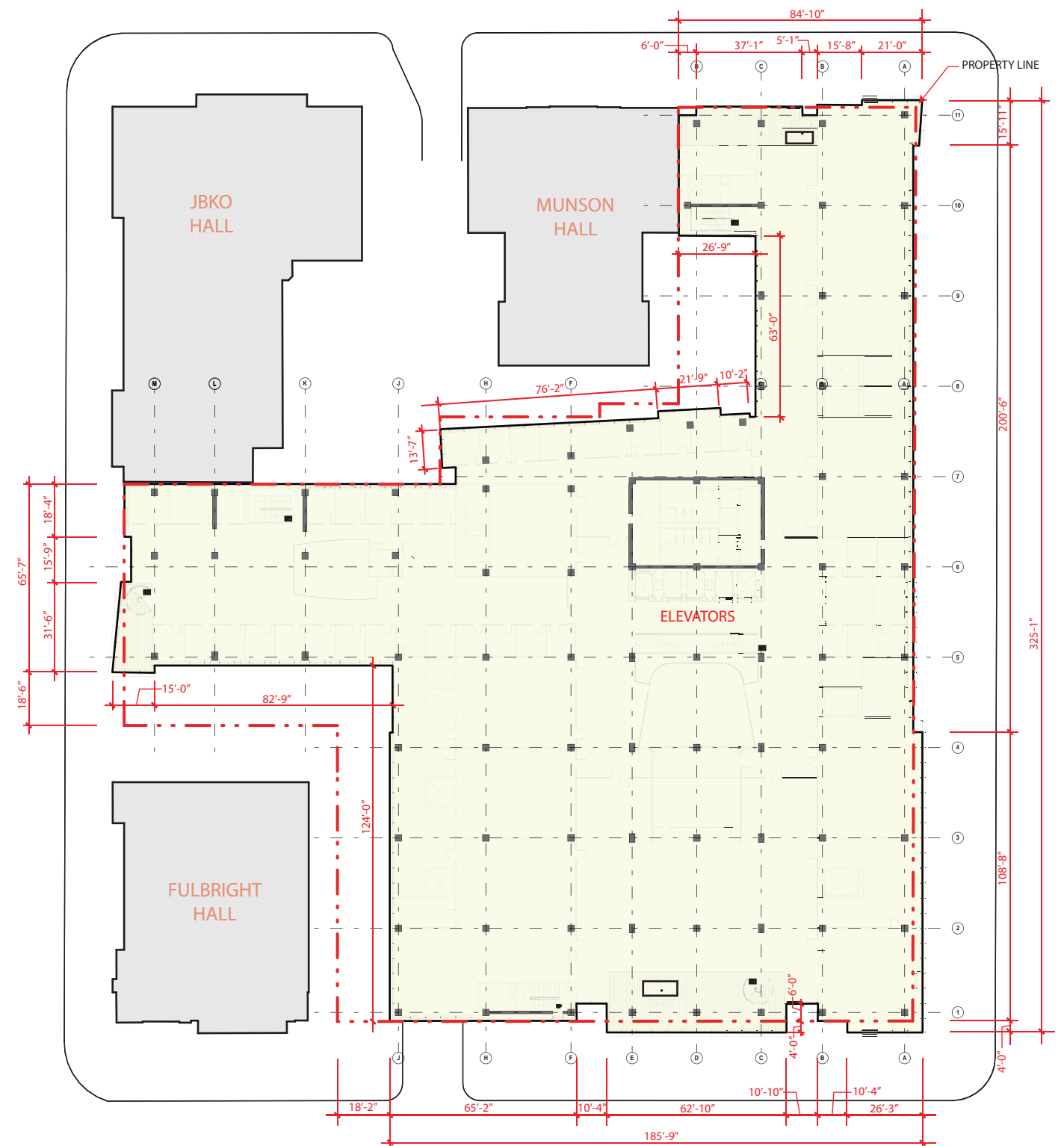
TITLE:
SECOND &
TYPICAL FLOOR
(3-6) PLAN

NUMBER:

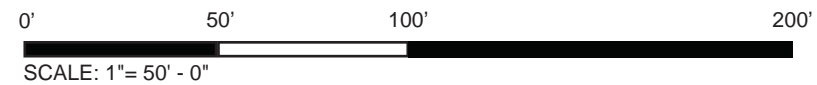
A-15



SECOND FLOOR PLAN



TYPICAL FLOOR (3-6) PLAN



NOTE: INTERIOR LAYOUTS ARE ILLUSTRATIVE ONLY
AND SUBJECT TO CHANGE ON FINAL PLAN



THE GEORGE
WASHINGTON
UNIVERSITY
WASHINGTON, DC

SCIENCE AND
ENGINEERING
COMPLEX
(SEC)

Square 55 - Washington DC 20052

Architecture
Engineering
Planning
Interior Design

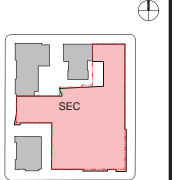
Ballinger

833 Chestnut Street
Suite 1400
Philadelphia, PA 19107
V 215.446.0900
F 215.446.0901
ballinger-ae.com

Hickok Cole



KEY PLAN:



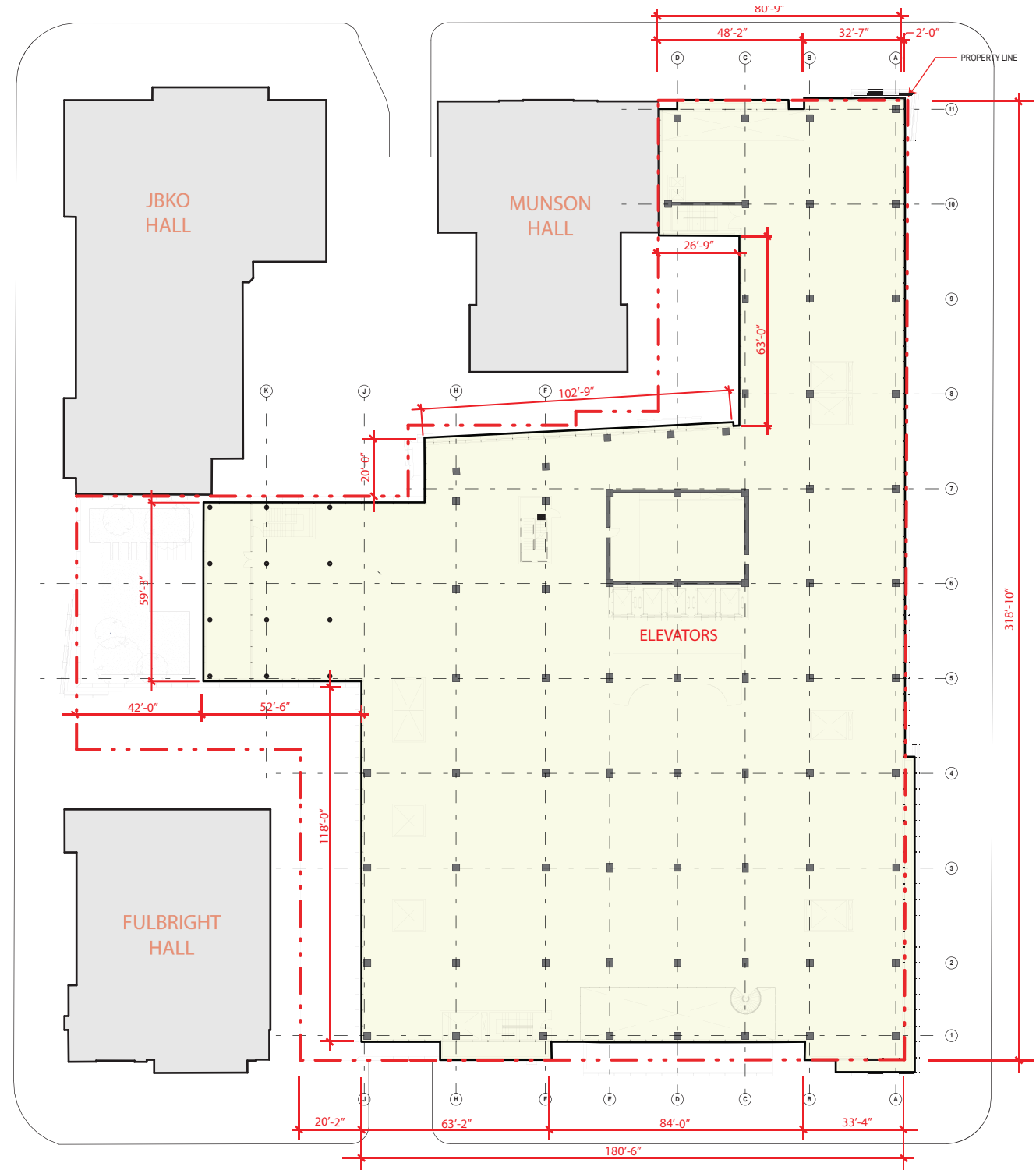
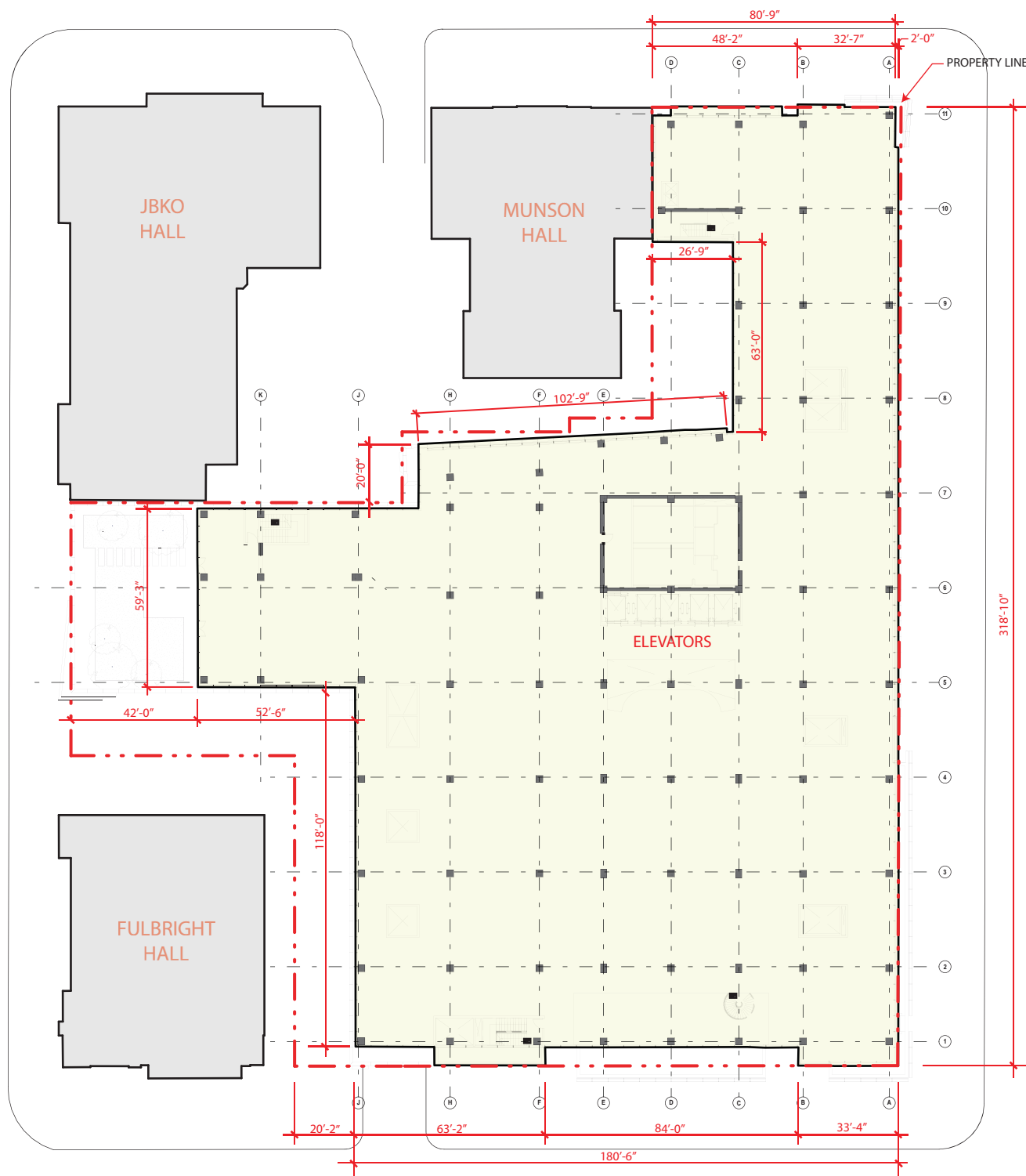
DATE:
NOVEMBER 15, 2010

SECOND-STAGE
PUD APPLICATION

TITLE:
SEVENTH &
EIGHTH FLOOR
PLAN

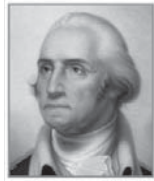
NUMBER:

A-16



0' 50' 100' 200'
SCALE: 1" = 50' - 0"

NOTE: INTERIOR LAYOUTS ARE ILLUSTRATIVE ONLY
AND SUBJECT TO CHANGE ON FINAL PLAN



THE GEORGE WASHINGTON UNIVERSITY WASHINGTON, D.C.

SCIENCE AND ENGINEERING COMPLEX (SEC)

Square 55 - Washington DC 20052

Architecture Engineering Planning Interior Design

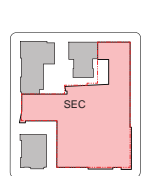
Ballinger

833 Chestnut Street Suite 1400 Philadelphia, PA 19107 V 215.446.0900 F 215.446.0901 ballinger-sec.com

Hickok Cole



KEY PLAN:



DATE: NOVEMBER 10, 2010

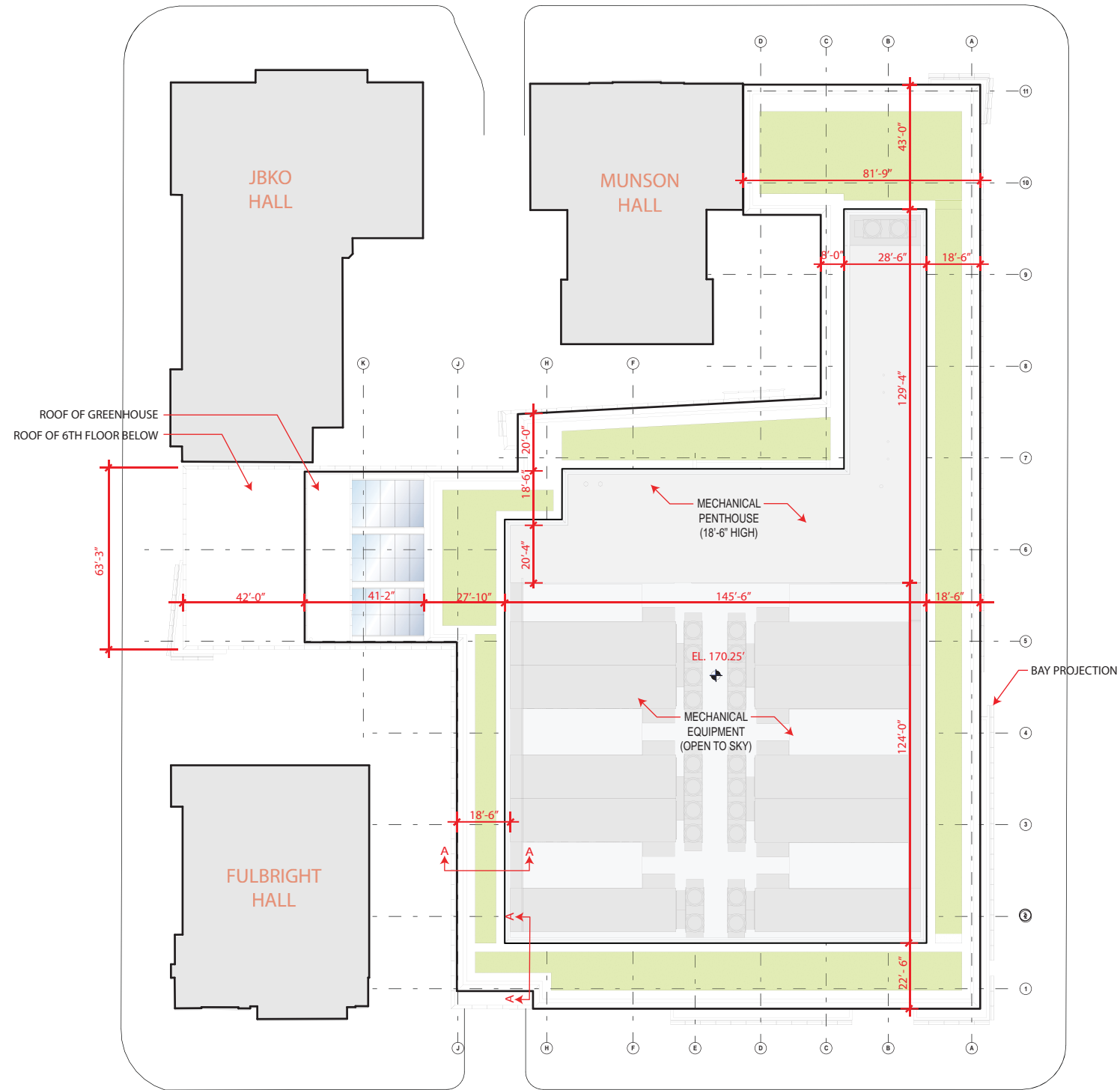
SECOND-STAGE PUD APPLICATION

TITLE:

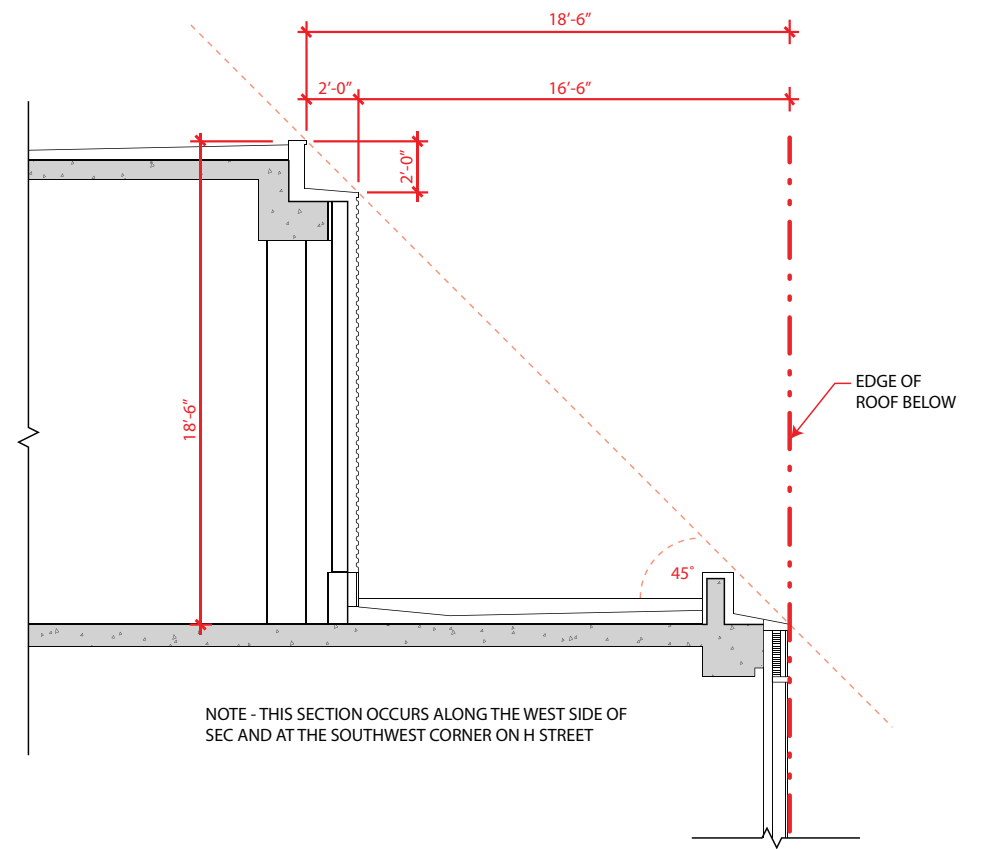
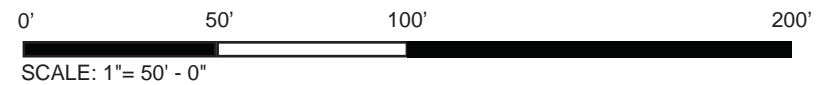
ROOF PLAN

NUMBER:

A-17



ROOF PLAN



AA : SET BACK SECTION

