

THE GEORGE
WASHINGTON
UNIVERSITY
WASHINGTON, D.C.

SCIENCE AND
ENGINEERING
COMPLEX
(SEC)

Square 55 - Washington DC 20052

Architecture
Engineering
Planning
Interior Design

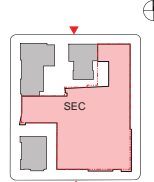
Ballinger

833 Chestnut Street
Suite 1400
Philadelphia, PA 19107
V 215.446.0900
F 215.446.0901
ballinger-aec.com

Hickok Cole



KEY PLAN:



DATE:
NOVEMBER 15, 2010

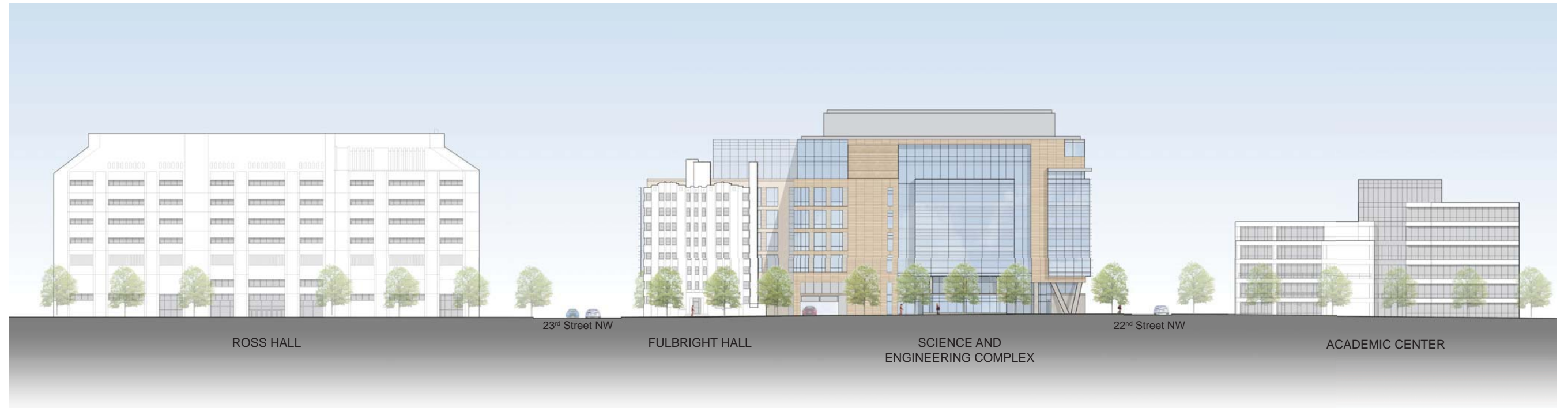
SECOND-STAGE
PUD APPLICATION

TITLE:

BLOCK
ELEVATIONS
H and EYE
STREET

NUMBER:

A-09



ROSS HALL

23rd Street NW

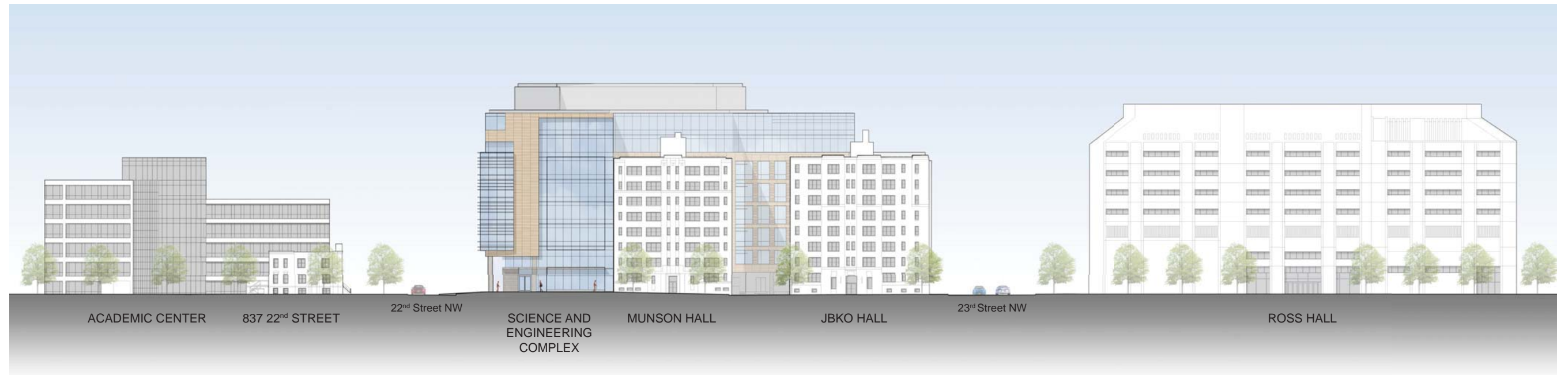
FULBRIGHT HALL

SCIENCE AND
ENGINEERING COMPLEX

22nd Street NW

ACADEMIC CENTER

H STREET ELEVATION



ACADEMIC CENTER

837 22nd STREET

22nd Street NW

SCIENCE AND
ENGINEERING
COMPLEX

MUNSON HALL

JBKO HALL

23rd Street NW

ROSS HALL

EYE STREET ELEVATION

0' 75' 150' 300'





DUQUÈS HALL - SCHOOL OF BUSINESS

MADISON HALL

H Street NW

SCIENCE AND ENGINEERING COMPLEX

Eye Street NW

THE AVENUE

2200 PENN

22nd STREET ELEVATION



2200 PENN

THE AVENUE

Eye Street NW

JBKO HALL

SCIENCE AND ENGINEERING COMPLEX

FULBRIGHT HALL

H Street NW

TOMPKINS HALL

23rd STREET ELEVATION

0' 75' 150' 300'



THE GEORGE WASHINGTON UNIVERSITY
WASHINGTON DC

SCIENCE AND ENGINEERING COMPLEX (SEC)

Square 55 - Washington DC 20052

Architecture
Engineering
Planning
Interior Design

Ballinger

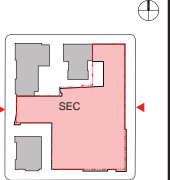
833 Chestnut Street
Suite 1400
Philadelphia, PA 19107
V 215.446.0900
F 215.446.0901
ballinger-ae.com

Hickok Cole



ARCHITECTS

KEY PLAN:



DATE:
NOVEMBER 15, 2010

SECOND-STAGE
PUD APPLICATION

TITLE:
BLOCK
ELEVATIONS
22nd and 23rd
STREET

NUMBER:

A-10