

NOTES:
 • Streetscape details are shown in concept for illustrative purposes. The final details of the streetscape improvements will conform with the approved Foggy Bottom Campus Streetscape Guidelines as well as other applicable design and permitting standards.

• See architectural plans for building interior.

SCALE: 1" = 50'



THE GEORGE WASHINGTON UNIVERSITY
 WASHINGTON, DC

SCIENCE AND ENGINEERING COMPLEX (SEC)

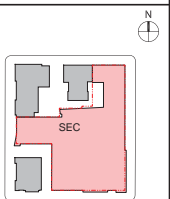
Square 55 - Washington DC 20052

Architecture
 Engineering
 Planning
 Interior Design

Ballinger

833 Chestnut Street
 Suite 1400
 Philadelphia, PA 19107
 V 215.446.0900
 F 215.446.0901
 ballinger.com

Hickok Cole



DATE: NOVEMBER 15, 2010

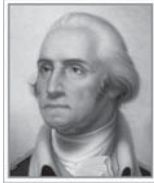
SECOND-STAGE PUD APPLICATION

TITLE:

ILLUSTRATIVE SITE PLAN

NUMBER:

L-01



THE GEORGE WASHINGTON UNIVERSITY
WASHINGTON, D.C.

SCIENCE AND ENGINEERING COMPLEX (SEC)

Square 55 - Washington DC 20052

Architecture
Engineering
Planning
Interior Design

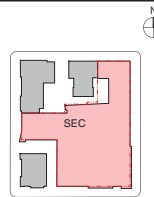
Ballinger

833 Chestnut Street Suite 1400
Philadelphia, PA 19107
V 215.446.0900
F 215.446.0901
ballinger-ae.com

Hickok Cole



ARCHITECTS

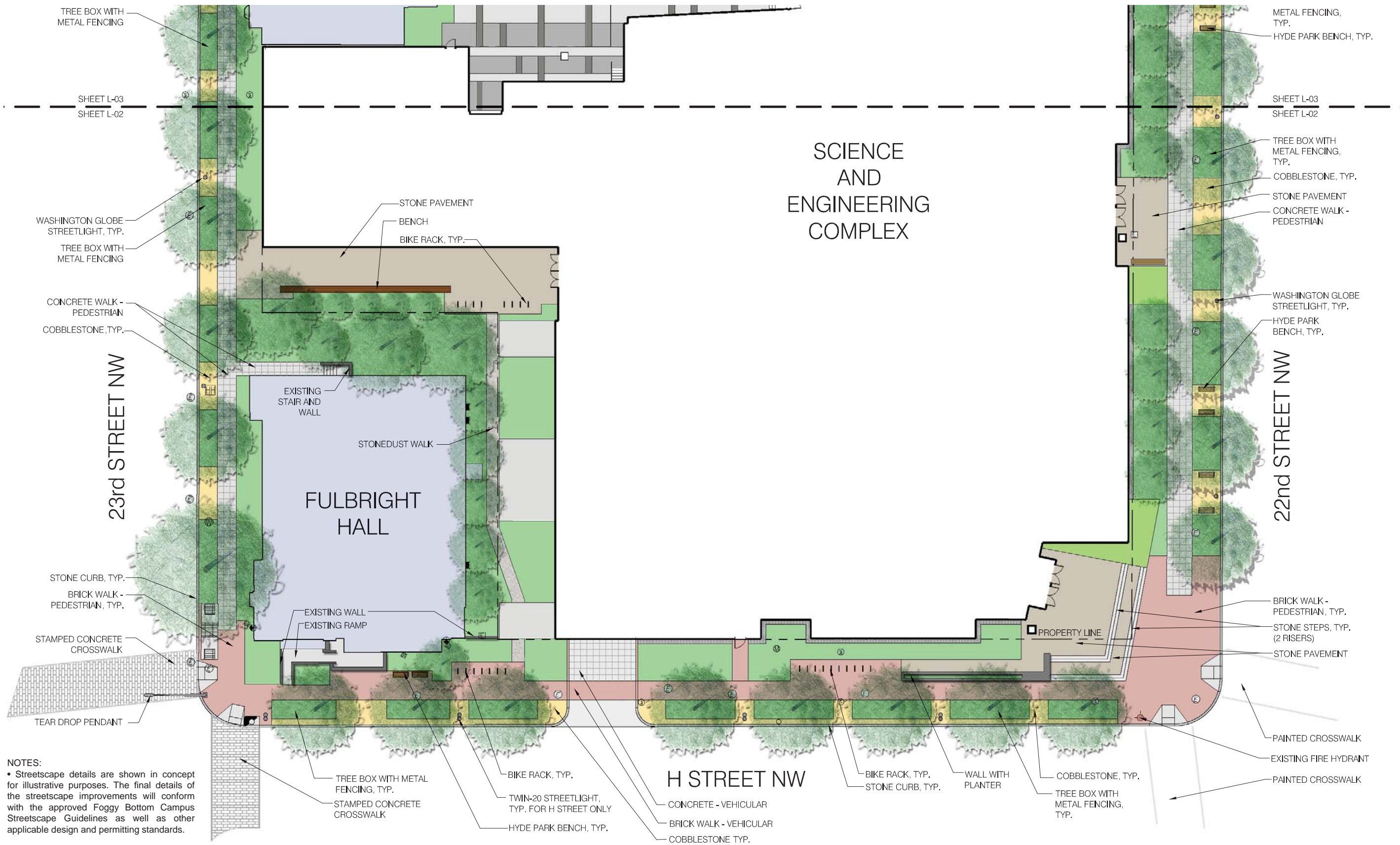


DATE: NOVEMBER 15, 2010

SECOND-STAGE PUD APPLICATION

TITLE:
ANNOTATED SITE PLAN - SOUTH

NUMBER:
L-02



NOTES:

- Streetscape details are shown in concept for illustrative purposes. The final details of the streetscape improvements will conform with the approved Foggy Bottom Campus Streetscape Guidelines as well as other applicable design and permitting standards.
- See architectural plans for building interior.

N
SCALE: 1" = 30'

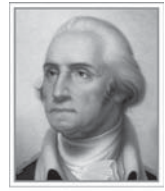
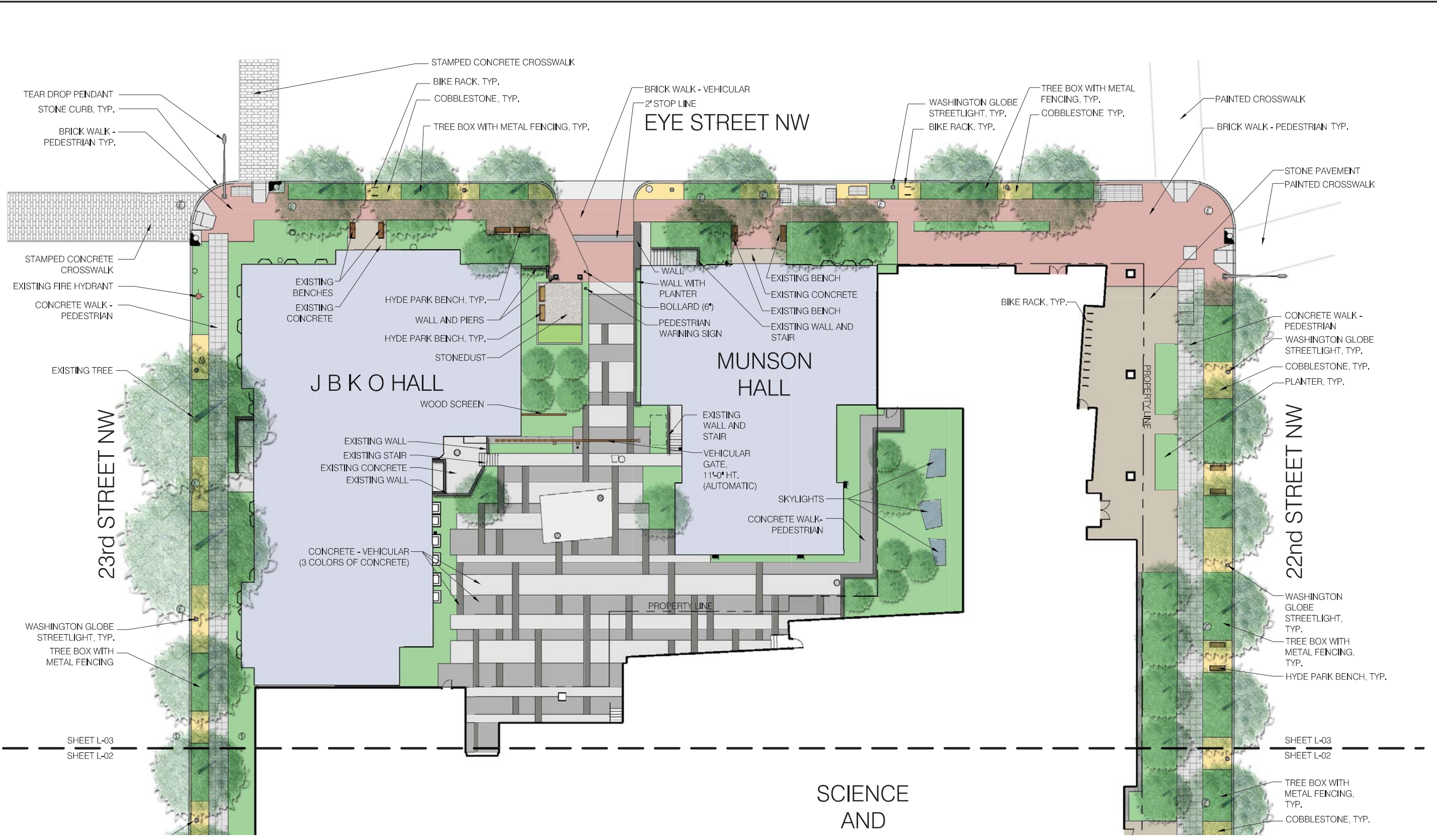
SCIENCE AND ENGINEERING COMPLEX

23rd STREET NW

22nd STREET NW

H STREET NW

FULBRIGHT HALL



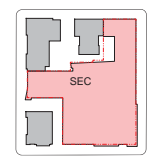
THE GEORGE WASHINGTON UNIVERSITY
SCIENCE AND ENGINEERING COMPLEX (SEC)
Square 55 - Washington DC 20052

Architecture
Engineering
Planning
Interior Design

Ballinger

833 Chestnut Street Suite 1400
Philadelphia, PA 19107
V 215.446.0900
F 215.446.0901
ballinger.com

Hickok Cole



DATE: NOVEMBER 15, 2010

SECOND-STAGE PUD APPLICATION

TITLE:

ANNOTATED SITE PLAN - NORTH

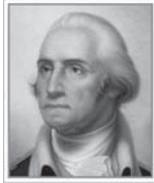
NUMBER:

L-03

NOTES:
• Streetscape details are shown in concept for illustrative purposes. The final details of the streetscape improvements will conform with the approved Foggy Bottom Campus Streetscape Guidelines as well as other applicable design and permitting standards.

• See architectural plans for building interior. SCALE: 1" = 30'





THE GEORGE WASHINGTON UNIVERSITY
WASHINGTON, D.C.

SCIENCE AND ENGINEERING COMPLEX (SEC)

Square 55 - Washington DC 20052

Architecture
Engineering
Planning
Interior Design

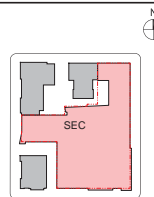
Ballinger

833 Chestnut Street Suite 1400
Philadelphia, PA 19107
V 215.446.0900
F 215.446.0901
ballinger-sec.com

Hickok Cole



ARCHITECTS

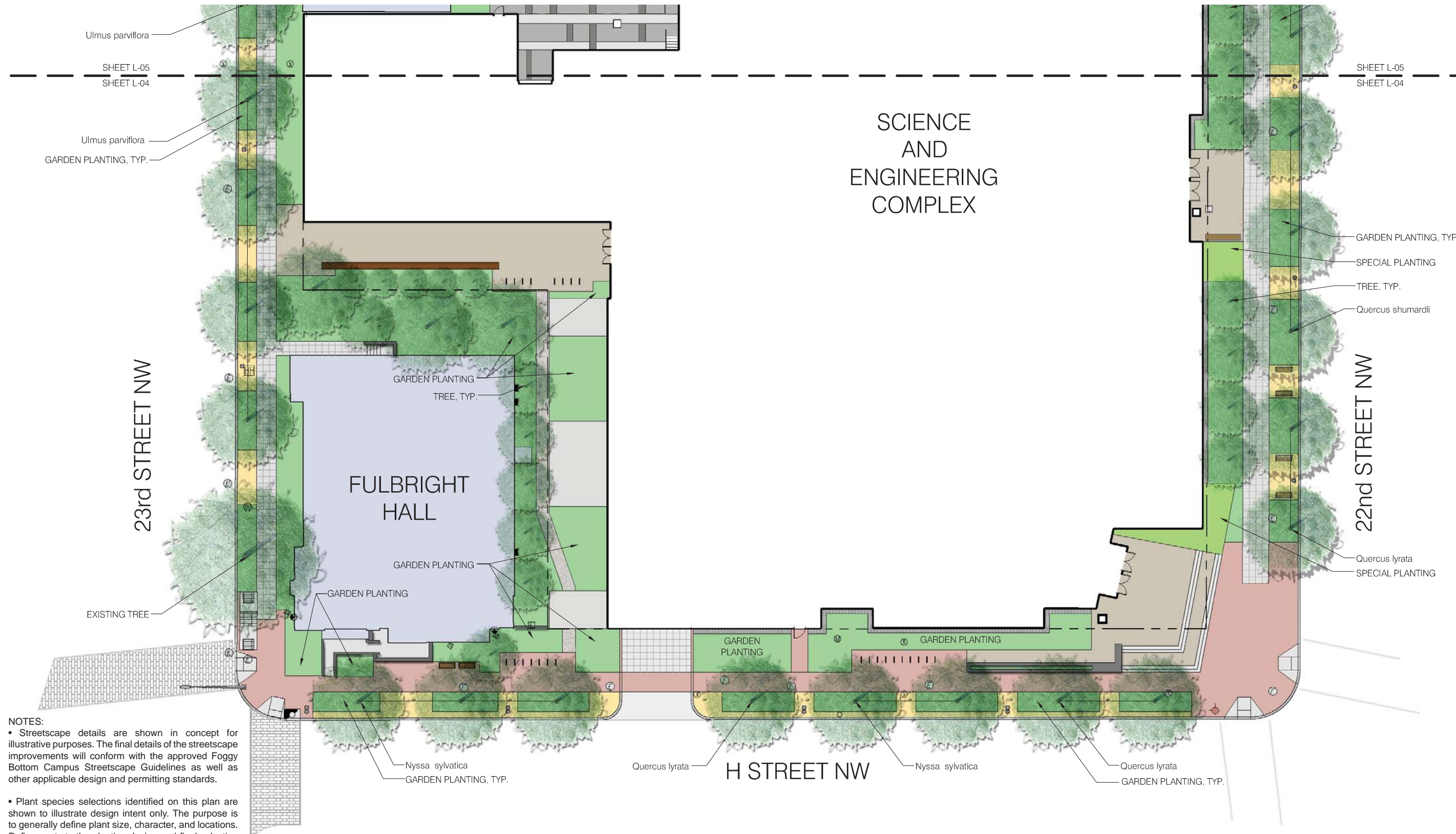


DATE:
NOVEMBER 15, 2010

SECOND-STAGE
PUD APPLICATION

TITLE:
PLANTING
PLAN -
SOUTH

NUMBER:
L-04



NOTES:
• Streetscape details are shown in concept for illustrative purposes. The final details of the streetscape improvements will conform with the approved Foggy Bottom Campus Streetscape Guidelines as well as other applicable design and permitting standards.

• Plant species selections identified on this plan are shown to illustrate design intent only. The purpose is to generally define plant size, character, and locations. Refinements to the planting design and final selection of all plant materials consistent with the species shown shall be developed during detailed design phases of work.

• See architectural plans for building interior.

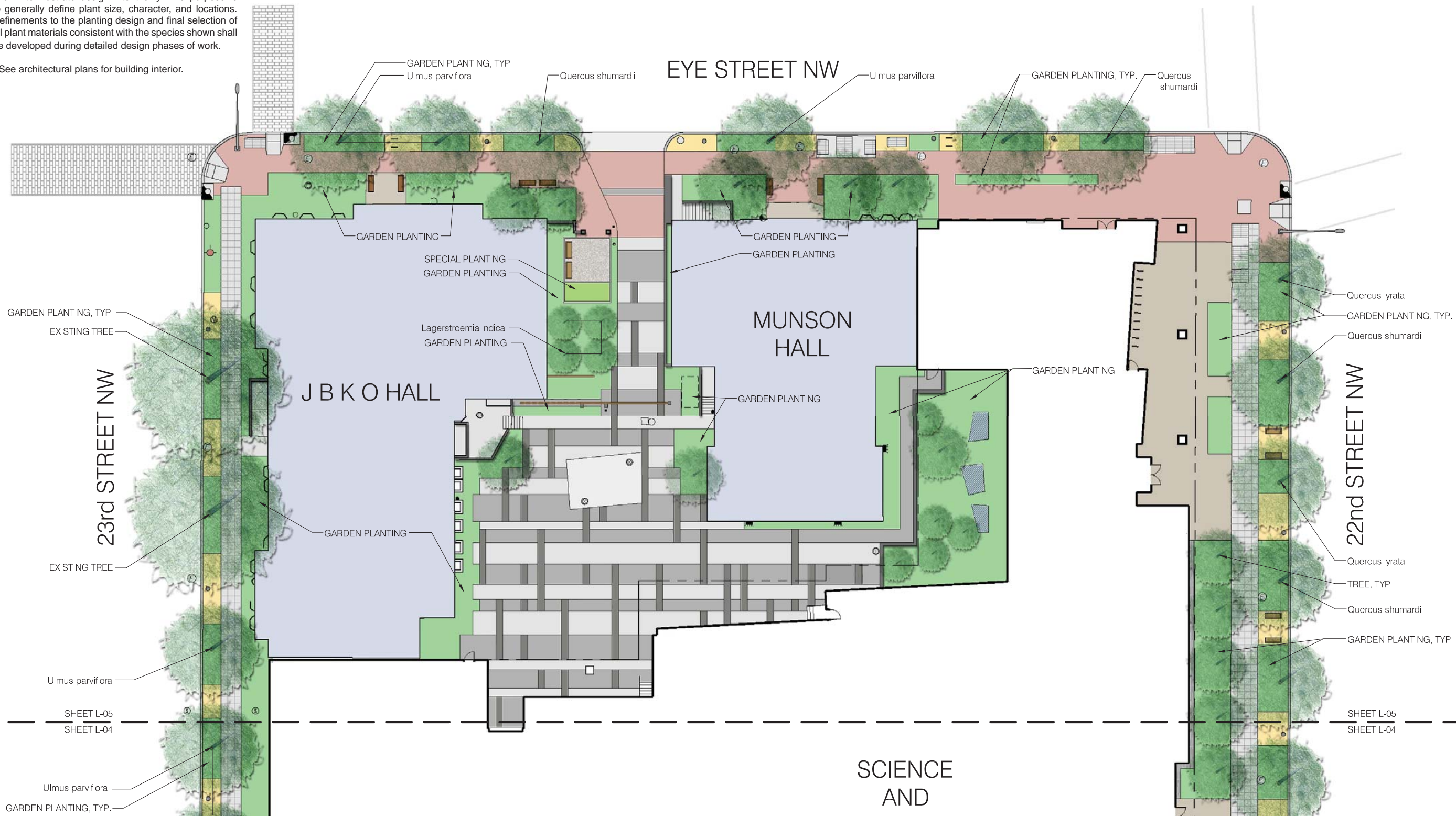
N
SCALE: 1" = 30'

NOTES:

- Streetscape details are shown in concept for illustrative purposes. The final details of the streetscape improvements will conform with the approved Foggy Bottom Campus Streetscape Guidelines as well as other applicable design and permitting standards.

- Plant species selections identified on this plan are shown to illustrate design intent only. The purpose is to generally define plant size, character, and locations. Refinements to the planting design and final selection of all plant materials consistent with the species shown shall be developed during detailed design phases of work.

- See architectural plans for building interior.



THE GEORGE
WASHINGTON
UNIVERSITY
WASHINGTON, DC

SCIENCE AND
ENGINEERING
COMPLEX
(SEC)

Square 55 - Washington DC 20052

Architecture
Engineering
Planning
Interior Design

Ballinger

833 Chestnut Street
Suite 1400
Philadelphia, PA 19107
V 215.446.0900
F 215.446.0901
ballinger.com

Hickok Cole



ARCHITECTS



DATE: NOVEMBER 15, 2010

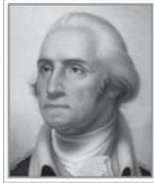
SECOND-STAGE
PUD APPLICATION

TITLE:
PLANTING
PLAN -
NORTH

NUMBER:
L-05

SCALE: 1" = 30'





THE GEORGE WASHINGTON UNIVERSITY
WASHINGTON, D.C.

SCIENCE AND ENGINEERING COMPLEX (SEC)

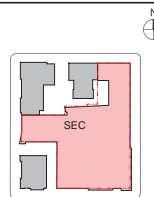
Square 55 - Washington DC 20052

Architecture
Engineering
Planning
Interior Design

Ballinger

833 Chestnut Street
Suite 1400
Philadelphia, PA 19107
V 215.446.0900
F 215.446.0901
ballinger-aec.com

Hickok Cole



DATE:
NOVEMBER 15, 2010

SECOND-STAGE
PUD APPLICATION

TITLE:

SITE
FURNISHINGS

NUMBER:

L-06



BENCH



BIKE RACK



WASHINGTON GLOBE STREETLIGHT



TWIN 20 STREETLIGHT



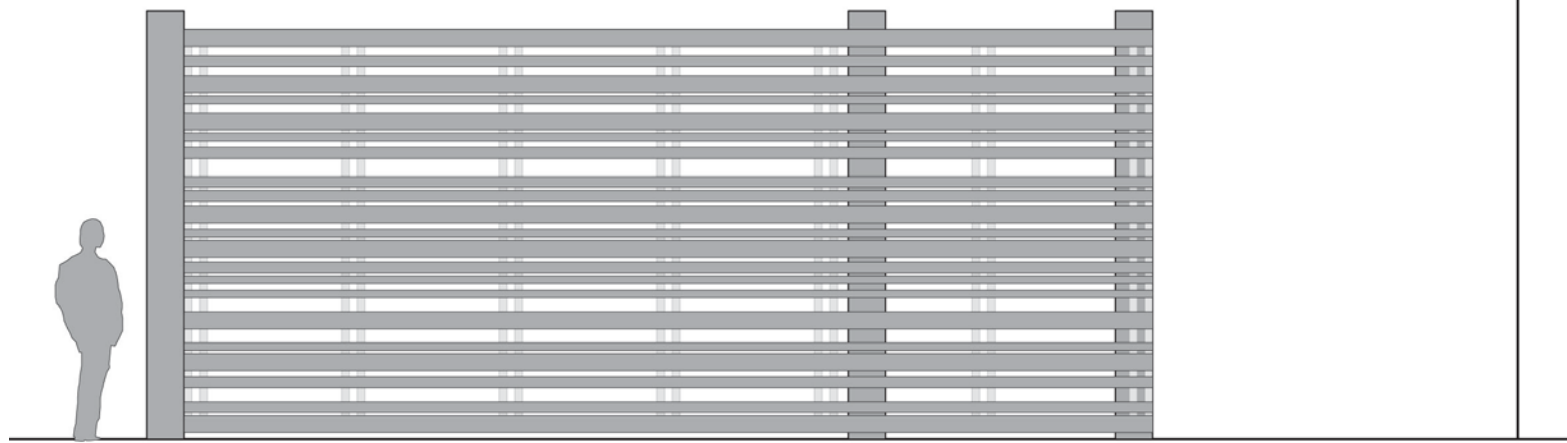
TEAR DROP PENDANT STREETLIGHT



TREE BOX FENCING

NOTE:

- Streetscape details are shown in concept for illustrative purposes. The final details of the streetscape improvements will conform with the approved Foggy Bottom Campus Streetscape Guidelines as well as other applicable design and permitting standards.



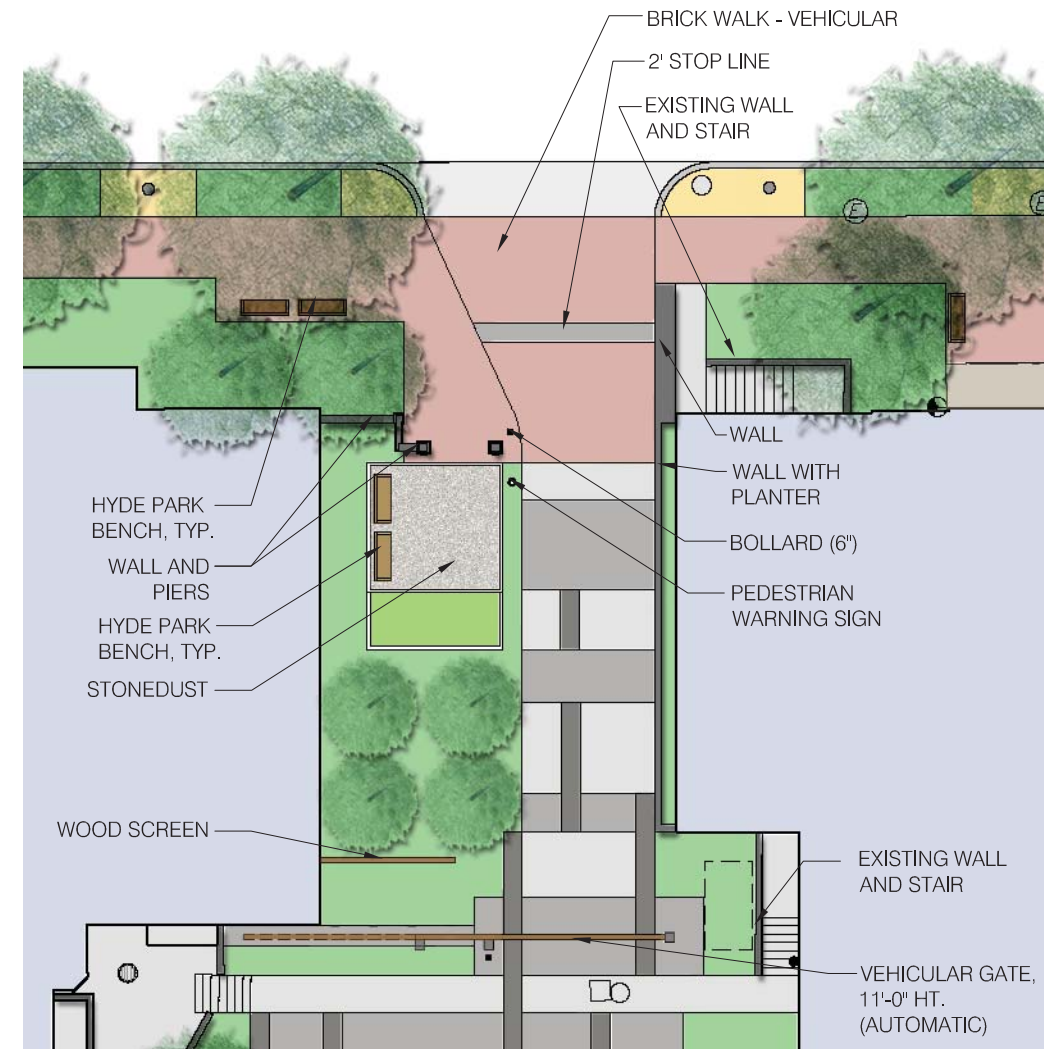
GATE ELEVATION

NOT TO SCALE

NOTES:

- Streetscape details are shown in concept for illustrative purposes. The final details of the streetscape improvements will conform with the approved Foggy Bottom Campus Streetscape Guidelines as well as other applicable design and permitting standards.

- See architectural plans for building interior.



PLAN

SCALE: 1"=20'



THE GEORGE WASHINGTON UNIVERSITY WASHINGTON, D.C.

SCIENCE AND ENGINEERING COMPLEX (SEC)

Square 55 - Washington DC 20052

Architecture
Engineering
Planning
Interior Design

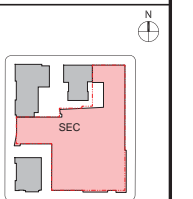
Ballinger

833 Chestnut Street
Suite 1400
Philadelphia, PA 19107
V 215.446.0900
F 215.446.0901
ballinger.com

Hickok Cole



ARCHITECTS

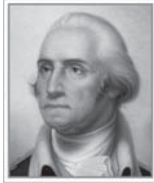


DATE: NOVEMBER 15, 2010

SECOND-STAGE PUD APPLICATION

TITLE:
EYE STREET POCKET PARK

NUMBER:
L-07



THE GEORGE
WASHINGTON
UNIVERSITY
WASHINGTON, D.C.

SCIENCE AND
ENGINEERING
COMPLEX
(SEC)

Square 55 - Washington DC 20052

Architecture
Engineering
Planning
Interior Design

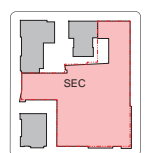
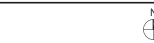
Ballinger

833 Chestnut Street
Suite 1400
Philadelphia, PA 19107
V 215.446.0900
F 215.446.0901
ballinger-aec.com

Hickok Cole



ARCHITECTS



DATE:
NOVEMBER 15, 2010

SECOND-STAGE
PUD APPLICATION

TITLE:

PLANTING

NUMBER:

L-08



Quercus lyrata (Overcup Oak)



Quercus shumardii (Shumard Oak)



Ulmus parviflora (Chinese Elm)



Nyssa sylvatica (Blackgum)



Garden Planting

Potential Plants for Garden Planting Areas

Botanical Name	Common Name
<i>Hosta</i>	Plantain Lily
<i>Ilex glabra</i>	Inkberry Holly
<i>Liriope muscari</i>	Liriope
<i>Nandina domestica</i>	Heavenly Bamboo
<i>Pennisetum alopecuroides</i>	Fountain Grass
<i>Osmunda cinnamomea</i>	Cinnamon fern
<i>Panicum virgatum</i>	Switchgrass
<i>Prunus laurocerasus</i>	Cherry Laurel
<i>Rosa 'Knockout'</i>	Knockout Rose

NOTES:

• Streetscape details are shown in concept for illustrative purposes. The final details of the streetscape improvements will conform with the approved Foggy Bottom Campus Streetscape Guidelines as well as other applicable design and permitting standards.

• Plant species selections identified on this plan are shown to illustrate design intent only. The purpose is to generally define plant size, character, and locations. Refinements to the planting design and final selection of all plant materials consistent with the species shown shall be developed during detailed design phases of work.