

May 9, 2011

VIA HAND DELIVERY

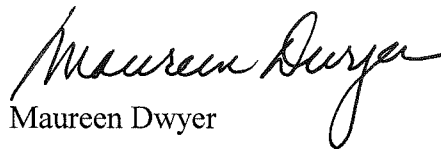
Mr. Anthony Hood, Chairman
Zoning Commission
441 4th Street, NW, Suite 210
Washington, DC 20001

Re: **Z.C. Case No. 06-11B/06-12B**
GW Foggy Bottom Campus Plan / PUD – Square 55
Supplemental Post-hearing Submission

Dear Chairman Hood and Members of the Commission:

As requested, attached please find site plans comparing the old and new proposed parks with the “John A. Wilson” memorial plaque. The old park, which fronted on 22nd Street, had a total area of approximately 1,243 square feet. The new park, which will front on 23rd Street, will have a total area of approximately 1,330 square feet. If you have any questions regarding this application, please feel free to contact Maureen at 202-721-1101 or David at 202-721-1137.

Sincerely,


Maureen Dwyer


David Avitabile

DA/da
Enclosures

cc: Charles Barber
Alicia O'Neil Knight

CERTIFICATE OF SERVICE

On May 9, 2011, I caused a copy of the foregoing letter and enclosure to be delivered by hand, U.S. Mail, or electronic mail to the following:

Arlova Jackson
D.C. Office of Planning
1100 4th Street, SW, Suite E650
Washington, DC 20024

Jeff Jennings
District Department of Transportation
55 M Street, SE
Washington, DC 20003

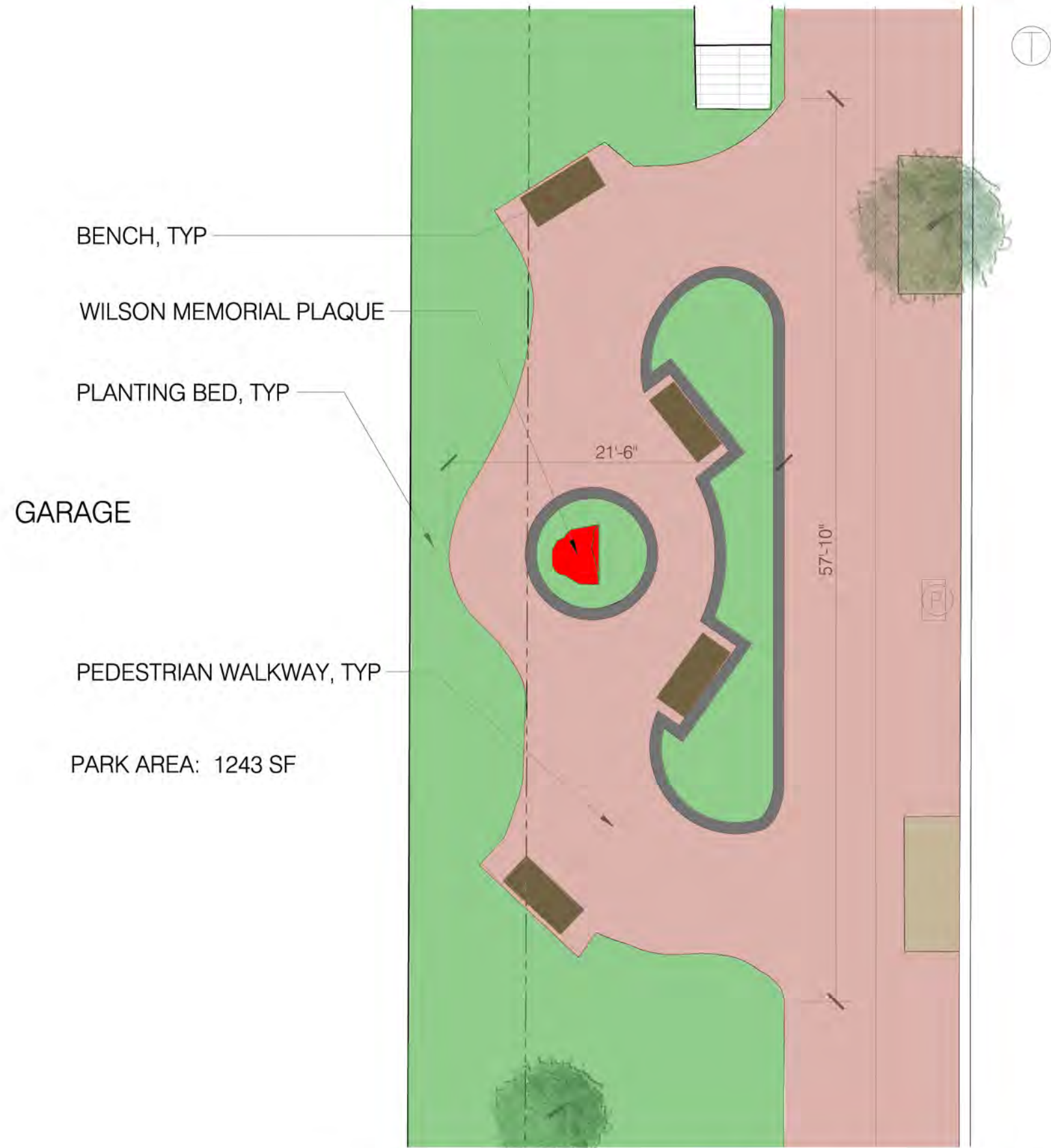
Advisory Neighborhood Commission 2A
West End Branch Library
1101 24th Street, NW
Washington, DC 20037

L. Asher Corson
President, Foggy Bottom Association
955 26th Street, NW, Apt. 709
Washington, DC 20037

West End Citizens Association
c/o Barbara Kahlow
800 25th Street, NW #704
Washington, DC 20037

A handwritten signature in black ink, appearing to read "David Avitabile", is written over a horizontal line.

David Avitabile



BENCH, TYP

WILSON MEMORIAL PLAQUE

PLANTING BED, TYP

GARAGE

PEDESTRIAN WALKWAY, TYP

PARK AREA: 1243 SF

21'-6"

57'-10"

**THE GEORGE WASHINGTON UNIVERSITY
SCIENCE AND ENGINEERING COMPLEX**



SCIENCE AND ENGINEERING COMPLEX

PARK AREA: 1330 SF

SIGN

WILSON MEMORIAL PLAQUE

BENCH

BIKE RACKS

23'-11"

55'-7"

BENCH

FULBRIGHT

Note: Tree locations are subject to change.

THE GEORGE WASHINGTON UNIVERSITY
SCIENCE AND ENGINEERING COMPLEX

WASHINGTON, DC



Wilson Memorial Plaque - Proposed Location

SCALE: 1/8" = 1'