

DUST CONTROL NOTES:

- THE CONTRACTOR SHALL CONDUCT OPERATIONS AND MAINTAIN THE PROJECT SITE AS TO MINIMIZE THE CREATION AND DISPERSION OF DUST. DUST CONTROL SHALL BE USED THROUGHOUT THE WORK AT THE SITE.
- THE CONTRACTOR MUST PROVIDE CLEAN WATER, FREE FROM SALT, OIL AND OTHER DELETERIOUS MATERIAL TO BE USED FOR ON-SITE DUST CONTROL.
- THE CONTRACTOR SHALL SUPPLY WATER SPRAYING EQUIPMENT CAPABLE OF ADDRESSING ALL WORK AREAS.
- THE CONTRACTOR SHALL IMPLEMENT STRICT DUST CONTROL MEASURES DURING ACTIVE CONSTRUCTION PERIODS ON-SITE. THESE CONTROL MEASURES WILL GENERALLY CONSIST OF WATER APPLICATIONS THAT SHALL BE APPLIED A MINIMUM OF ONCE PER DAY DURING DRY WEATHER OR MORE OFTEN AS REQUIRED TO PREVENT DUST EMISSIONS.
- FOR WATER APPLICATION TO UNDISTURBED SOIL SURFACES, THE CONTRACTOR SHALL:
 - APPLY WATER WITH EQUIPMENT CONSISTING OF TANK, SPRAY BAR, PUMP WITH DISCHARGE PRESSURE GAUGE;
 - ARRANGE SPRAY BAR HEIGHT, NOZZLE SPACING AND SPRAY PATTERN TO PROVIDE COMPLETE COVERAGE OF GROUND WITH WATER;
 - OPERATE WATER THROUGH NOZZLES ON SPRAY BAR AT 20 PSI (137.8 K PA) MINIMUM. KEEP AREAS DAMP WITHOUT CREATING NUISANCE CONDITIONS SUCH AS PONDING.

- FOR WATER APPLICATION TO SOIL SURFACES DURING DEMOLITION AND/OR EXCAVATION, THE CONTRACTOR SHALL:
 - APPLY WATER WITH EQUIPMENT CONSISTING OF A TANK, PUMP WITH DISCHARGE GAUGE, HOSES AND MIST NOZZLES;
 - LOCATE TANK AND SPRAYING EQUIPMENT SO THAT THE ENTIRE EXCAVATION AREA CAN BE MISTED WITHOUT INTERFERING WITH DEMOLITION AND/OR EXCAVATION EQUIPMENT OR OPERATIONS. KEEP AREAS DAMP WITHOUT CREATING NUISANCE CONDITIONS SUCH AS PONDING.
 - APPLY WATER SPRAY IN A MANNER TO PREVENT MOVEMENT OF SPRAY BEYOND SITE BOUNDARIES.

INSTALL SILT FENCE AT PERIMETER TO REMAIN IN PLACE UNTIL BELOW GRADE EXCAVATION HAS BEGUN UNLESS OTHERWISE APPROVED BY THE INSPECTOR.

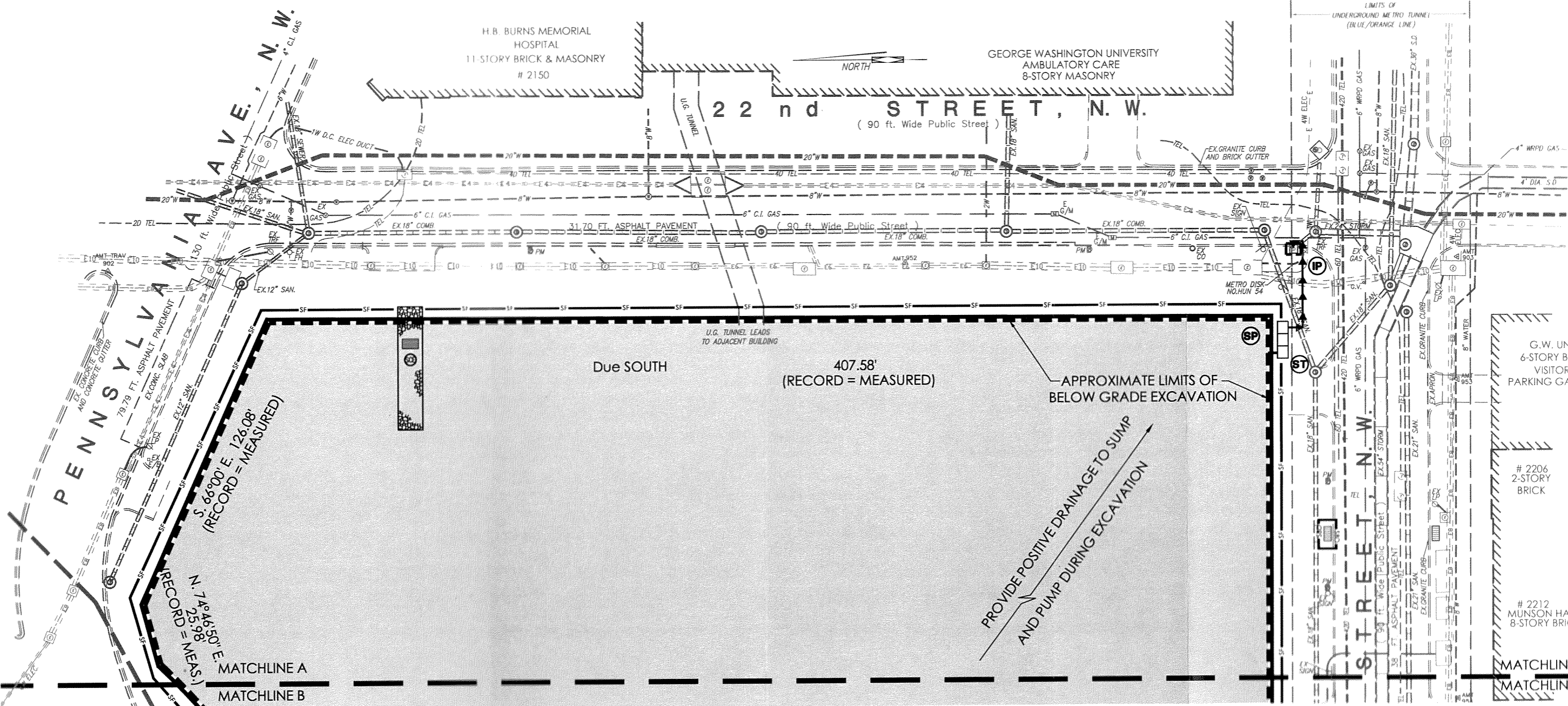
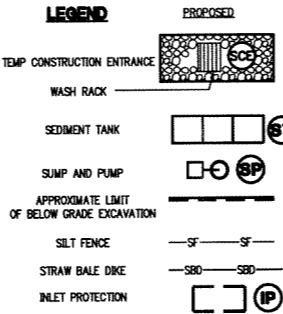
PROVIDE CHAIN LINK FENCE AT PERIMETER OF SITE.

NOTE:

THE CONTRACTOR SHALL BE RESPONSIBLE FOR DESIGN OF SHEETING AND SHORING AND SUPPORT OF EXISTING UTILITIES AND ADJACENT STRUCTURES, SHORING, BRACING, AND UNDERPINNING DESIGNED BY THE CONTRACTOR'S STRUCTURAL ENGINEER LICENSED IN THE DISTRICT OF COLUMBIA SHALL BE PROVIDED AS NECESSARY TO ENSURE THEIR SUPPORT.

CONSTRUCTION AND STABILIZATION SEQUENCE

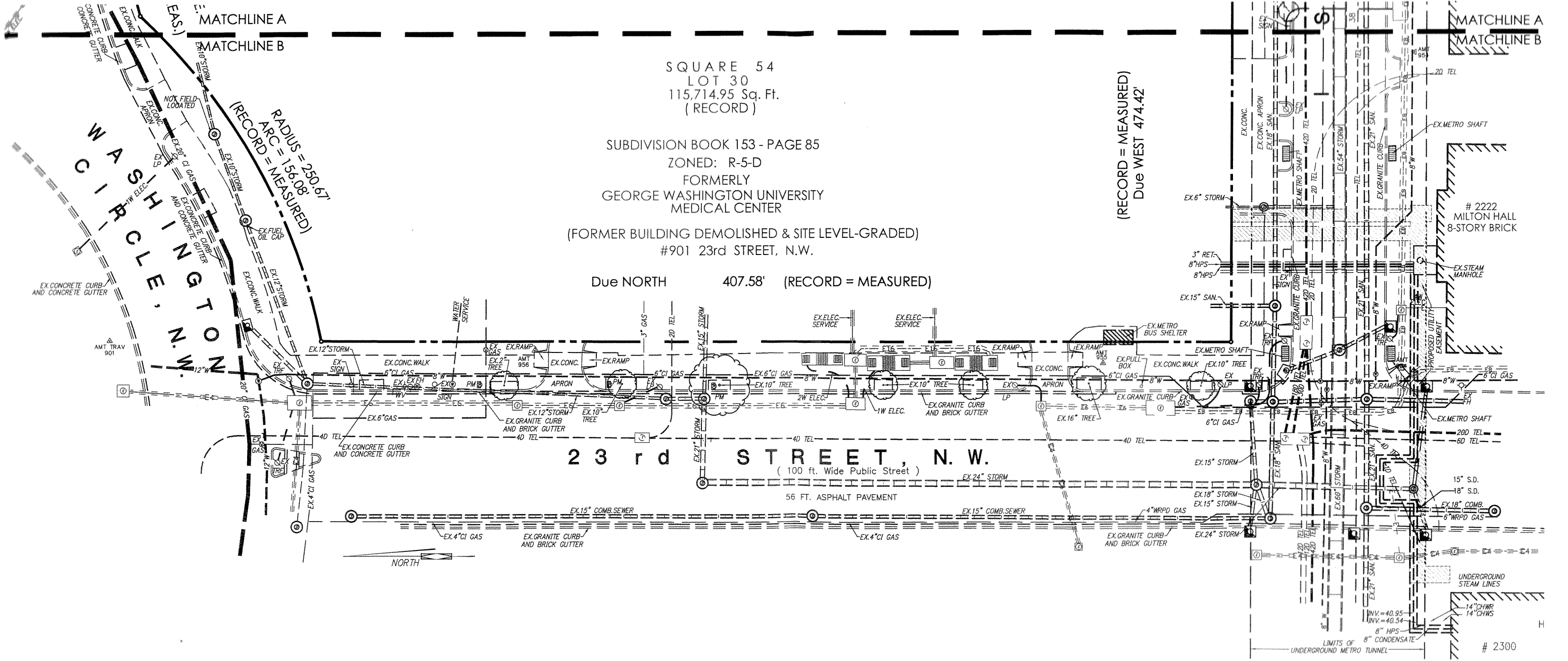
- INSTALL SEDIMENT AND EROSION CONTROL MEASURES INCLUDING STABILIZED CONSTRUCTION ENTRANCE, WASH RACK, STRAW BALE DIKE, AS INDICATED ON THIS SHEET. SEE SHEET C1.04 FOR SEDIMENT AND EROSION CONTROL DETAILS.
- SEDIMENT CONTROL MEASURES SHALL BE INSPECTED AND APPROVED BY THE INSPECTOR PRIOR TO COMMENCING ANY OTHER LAND DISTURBING ACTIVITIES.
- INSTALL SITE IMPROVEMENTS AS INDICATED FOR THE PROPOSED BUILDING.
- AT THE COMPLETION OF CONSTRUCTION AND AFTER THE INSPECTOR'S APPROVAL, ALL TEMPORARY SEDIMENTATION AND EROSION CONTROL MEASURES SHALL BE REMOVED.



C.102a SEDIMENTATION AND EROSION CONTROL PLAN

30 MAY 2006
SCALE: 1" = 40'-0"

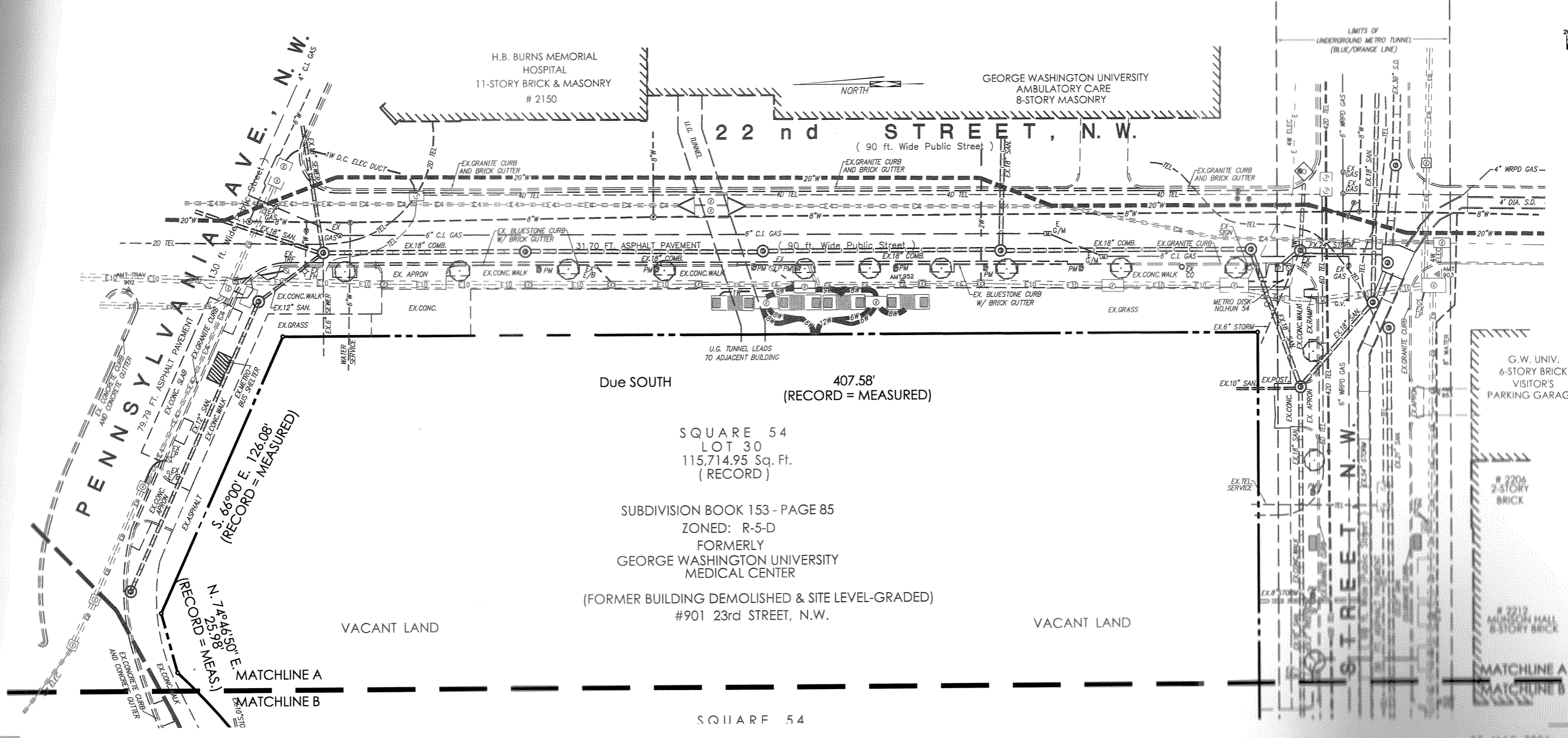
EXISTING	LEGEND	EXISTING	LEGEND	EXISTING	LEGEND
—E—	ELECTRIC LINE & STRUCTURE	—T—	TELEPHONE LINE & STRUCTURE	—L—	LIGHT POLE, STREET LIGHT
—S—	SANITARY LINE & MH	—W—	WATER LINE & MH	—G—	GAS LINE & VALVE
—SI—	STORM INLET	—WV—	WATER STRUCTURES		
—SL—	STORM LINE				
—G—	GAS				
—W—	WATER				



C1.01b EXISTING CONDITIONS PLAN

30 MAY 2006
SCALE: 1" = 40'-0"

EXISTING	LEGEND	EXISTING	LEGEND	EXISTING	LEGEND
	ELECTRIC LINE & STRUCTURE		TEST PIT REQUIRED		CURB & GUTTER
	TELEPHONE LINE & STRUCTURE		PARKING METER		HEADER CURB
	LIGHT POLE, STREET LIGHT		BOLLARD		EDGE OF PAVEMENT
	SANITARY LINE & MH		CHAIN LINK FENCE		PAVING AREA
	STORM INLET		DRIP LINE		PAVEMENT MARKING
	STORM LINE		CONTOURS		RETAINING WALL
	GAS LINE & VALVE		SPOT ELEVATIONS		
	WATER LINE & MH		FACE OF BUILDING		
	WATER STRUCTURES		CONCRETE SIDEWALK		



Due SOUTH

407.58'
(RECORD = MEASURED)

SQUARE 54
LOT 30
115,714.95 Sq. Ft.
(RECORD)

SUBDIVISION BOOK 153 - PAGE 85
ZONED: R-5-D
FORMERLY
GEORGE WASHINGTON UNIVERSITY
MEDICAL CENTER
(FORMER BUILDING DEMOLISHED & SITE LEVEL-GRADED)
#901 23rd STREET, N.W.

VACANT LAND

VACANT LAND

C1.01a EXISTING CONDITIONS PLAN



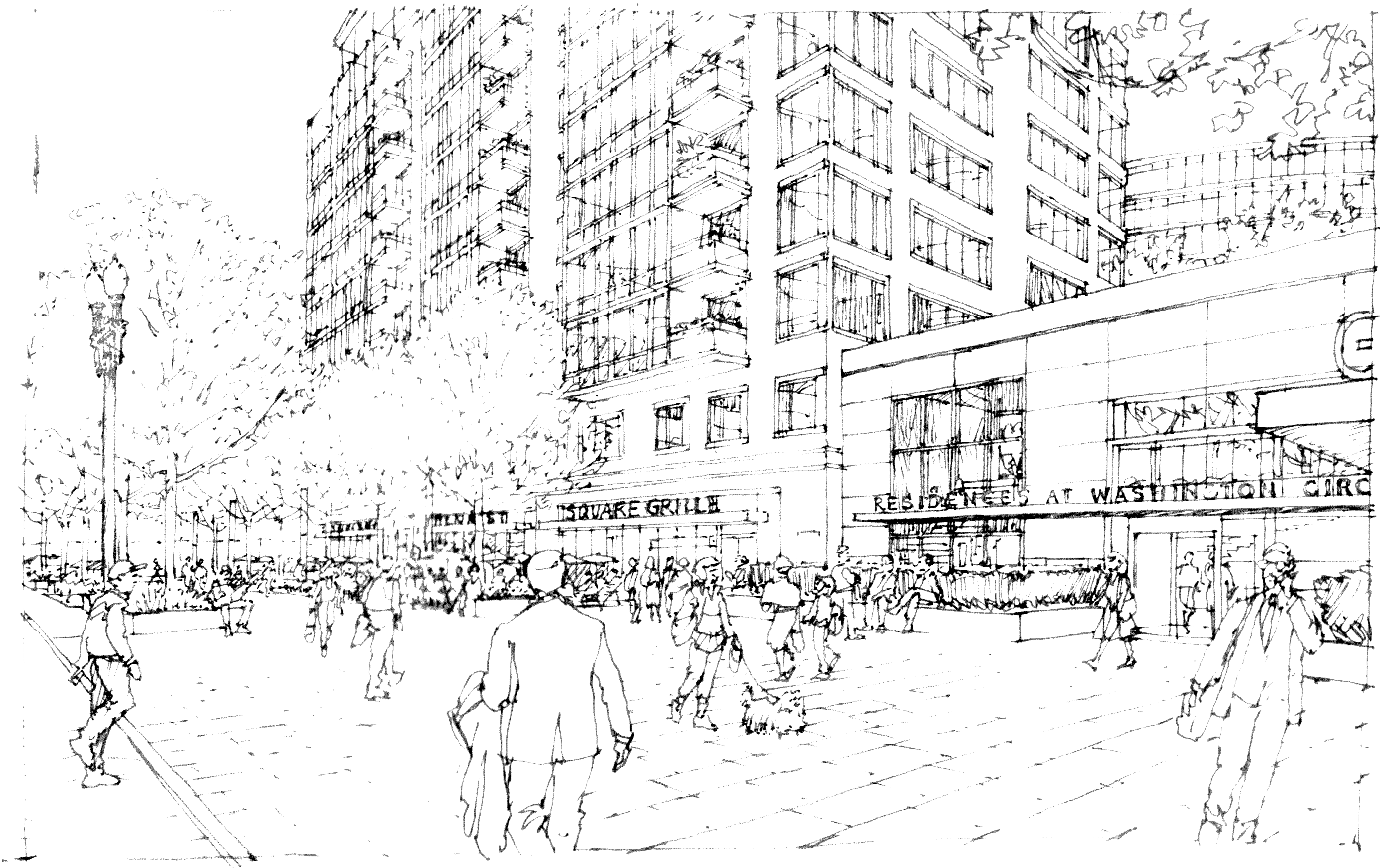
A1.04 VIEW OF SQUARE 54 COURTYARD

30 MAY 2006



AI.03 VIEW OF EYE STREET LOOKING EAST

30 MAY 2006



A1.02 VIEW OF EYE STREET LOOKING WEST