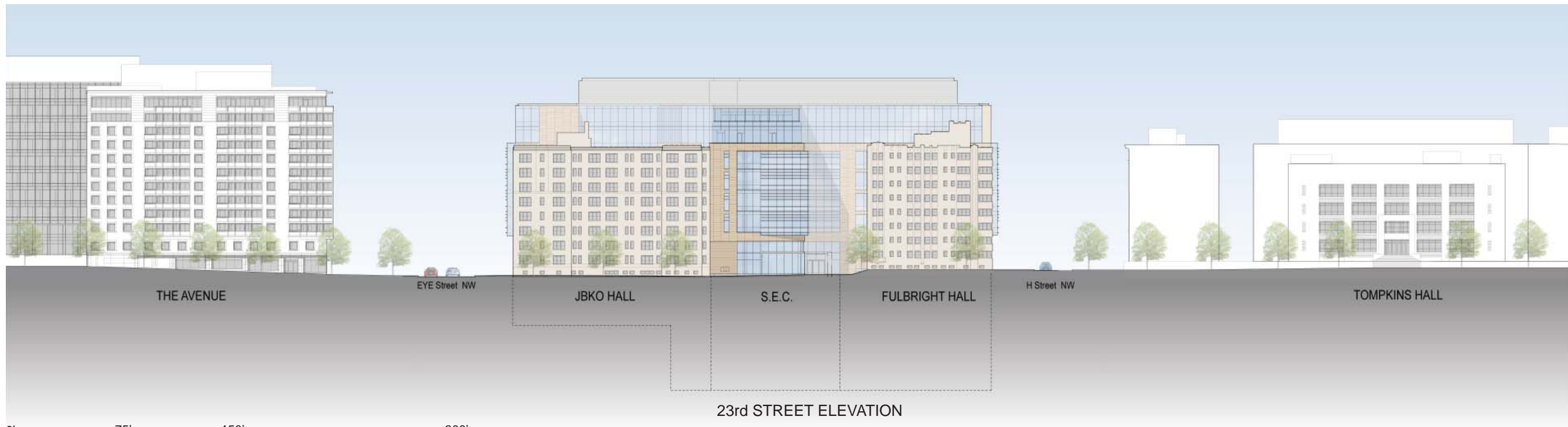


22nd STREET ELEVATION



23rd STREET ELEVATION

0' 75' 150' 300'



THE GEORGE
WASHINGTON
UNIVERSITY
WASHINGTON, D.C.

SCIENCE AND
ENGINEERING
COMPLEX
(SEC)

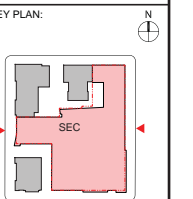
Square 55 - Washington DC 20052

Architecture
Engineering
Planning
Interior Design

Ballinger

833 Chestnut Street
Suite 1800
Philadelphia, PA 19107
V 215.446.0900
F 215.446.0901
ballinger.com

Hickok Cole

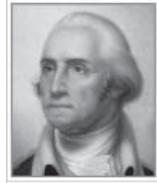


DATE:
MARCH 4, 2011

SECOND-STAGE
PUD APPLICATION

TITLE:
BLOCK
ELEVATIONS
22nd and 23rd
STREET

NUMBER:
A-10



THE GEORGE WASHINGTON UNIVERSITY WASHINGTON, D.C.

SCIENCE AND ENGINEERING COMPLEX (SEC)

Square 55 - Washington DC 20052

Architecture
Engineering
Planning
Interior Design

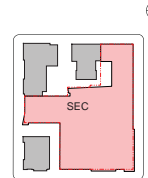
Ballinger

833 Chestnut Street
Suite 1400
Philadelphia, PA 19107
V 215.446.0900
F 215.446.0901
ballinger.com

Hickok Cole



KEY PLAN:



DATE:
MARCH 4, 2011

SECOND-STAGE
PUD APPLICATION

TITLE:

G4 & G3
PARKING PLAN

NUMBER:

A-11

PARKING SYMBOLS

FULL SIZE SPACE

COMPACT SPACE

ELECTRIC VEHICLE (Charging Space)

LEVE VEHICLE SPACE (Low Emissions/Fuel Efficient Vehicle)

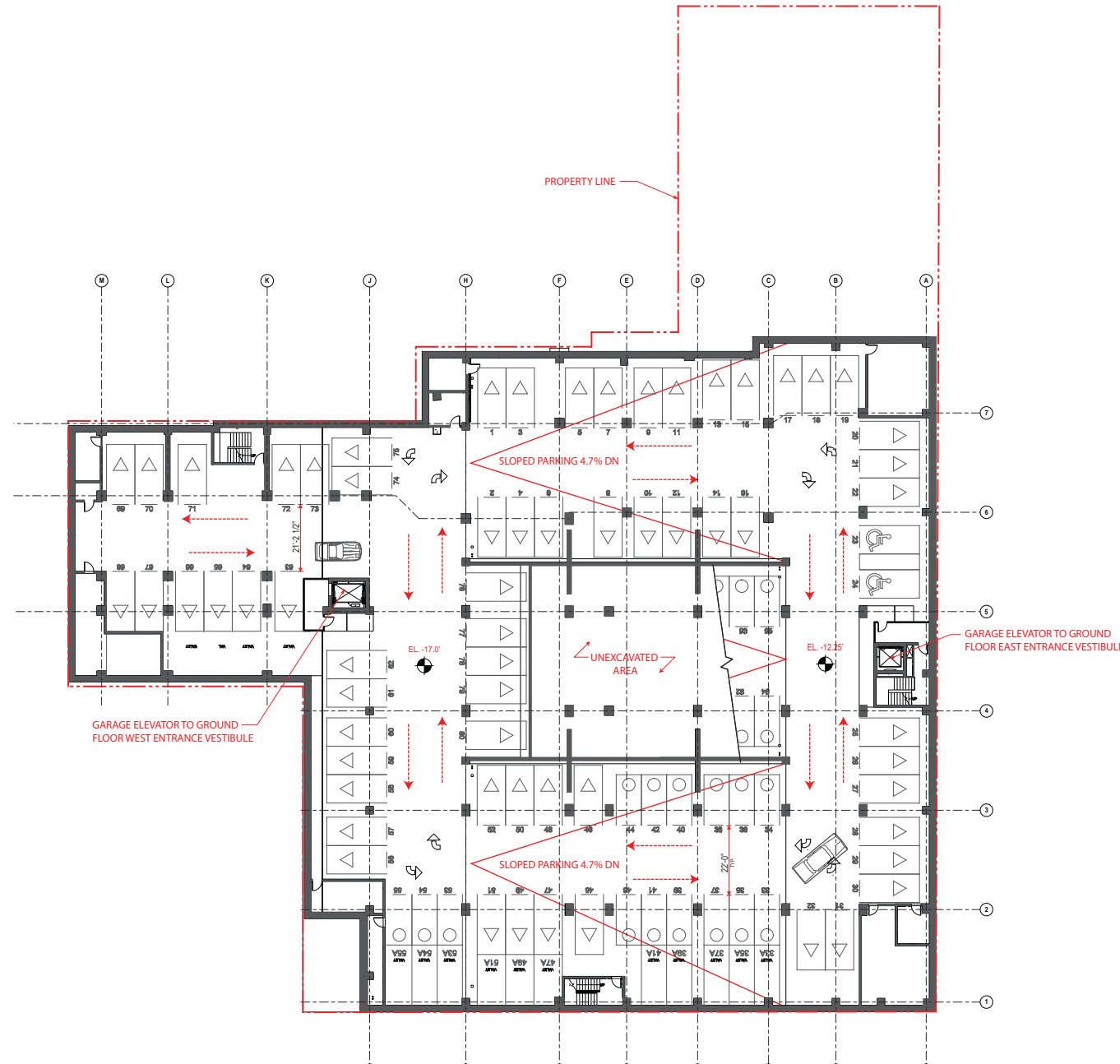
VAN ONLY SPACE

HANDICAPPED SPACE

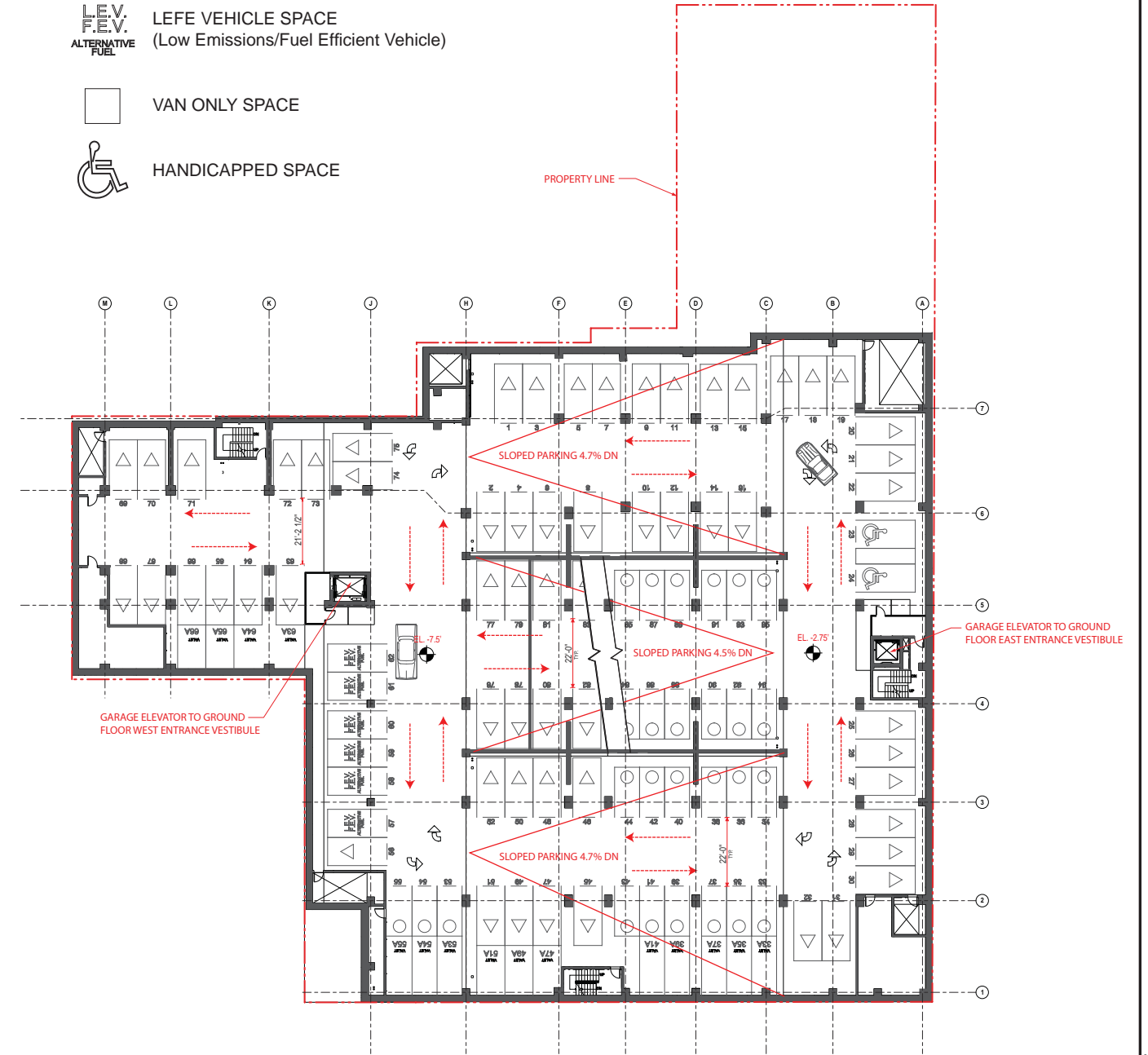
PARKING TABULATION

	Standard (9' x 19')	Compact (8' x 16')	Total	Valet	Total
G-1 LEVEL	43	27	70	10	80
G-2 LEVEL	56	27	83	11	94
G-3 LEVEL	68	27	95	15	110
G-4 LEVEL	65	15	80	15	95
	232	96	328	51	*379

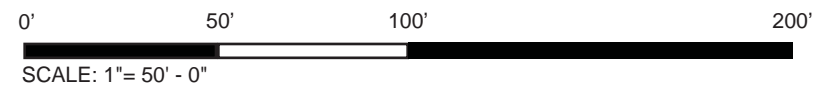
*379 TOTAL PARKING SPACES PROVIDED INCLUDING VALET SPACES



G4 PARKING PLAN



G3 PARKING PLAN



NOTE: Interior layouts are illustrative only and subject to change on final plan.
NOTE: Parking relief for use of tandem/valet spaces was granted per previously approved 2007 Foggy Bottom Campus Plan. In accordance with this approval, the University may modify the parking garage operation further to add or remove tandem/valet spaces to accommodate parking demand needs.



THE GEORGE
WASHINGTON
UNIVERSITY
WASHINGTON, DC

SCIENCE AND
ENGINEERING
COMPLEX
(SEC)

Square 55 - Washington DC 20052

Architecture
Engineering
Planning
Interior Design

Ballinger

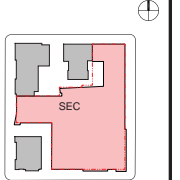
833 Chestnut Street
Suite 1400
Philadelphia, PA 19107
V 215.446.0900
F 215.446.0901
ballinger.com

Hickok Cole



ARCHITECTS

KEY PLAN:



DATE:
MARCH 4, 2011

SECOND-STAGE
PUD APPLICATION

TITLE:
G2 & G1
PARKING PLAN

NUMBER:
A-12

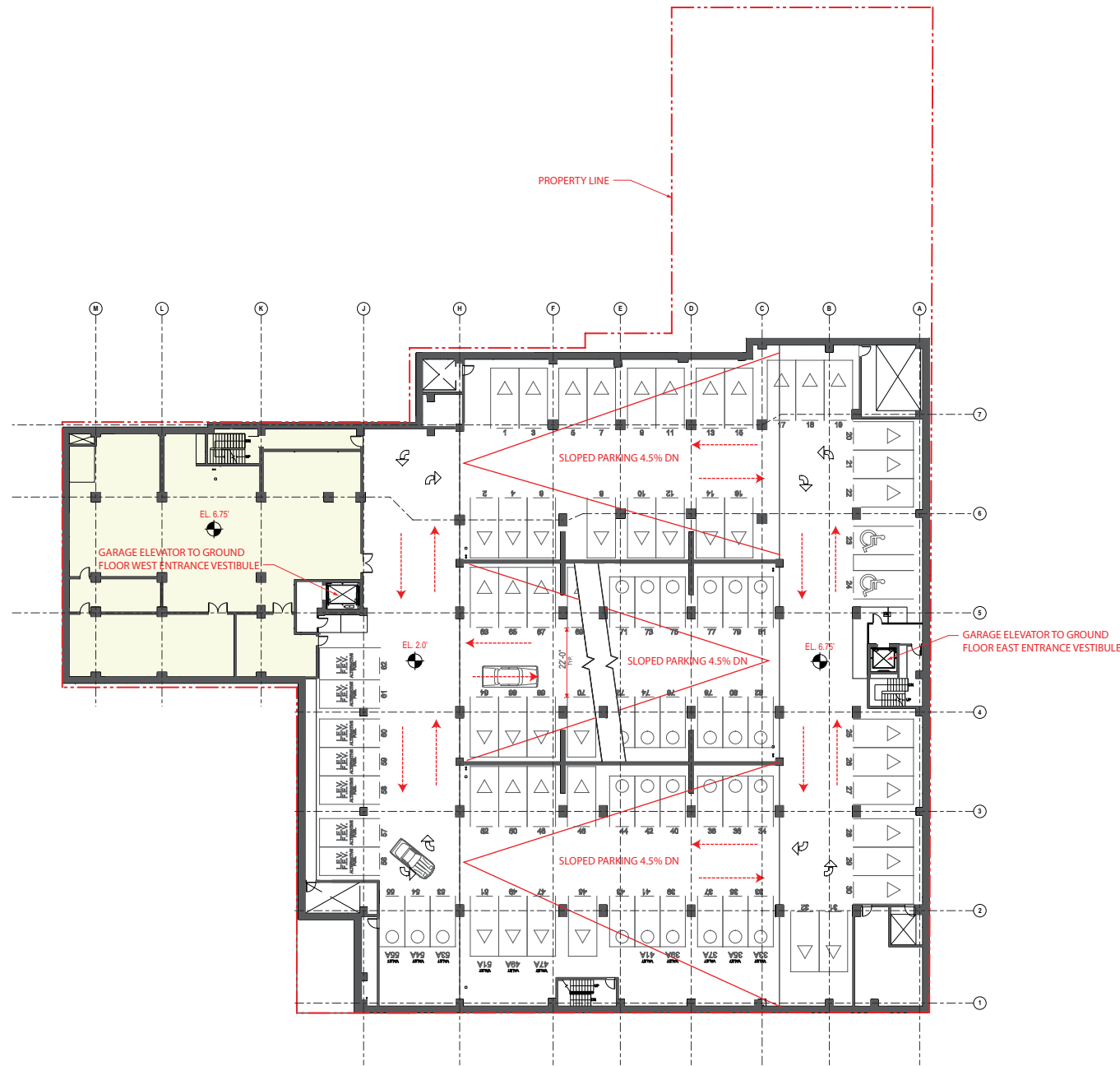
PARKING SYMBOLS

- FULL SIZE SPACE
- COMPACT SPACE
- ELECTRIC VEHICLE (Charging Space)
- LEVE VEHICLE SPACE (Low Emissions/Fuel Efficient Vehicle)
- VAN ONLY SPACE
- HANDICAPPED SPACE

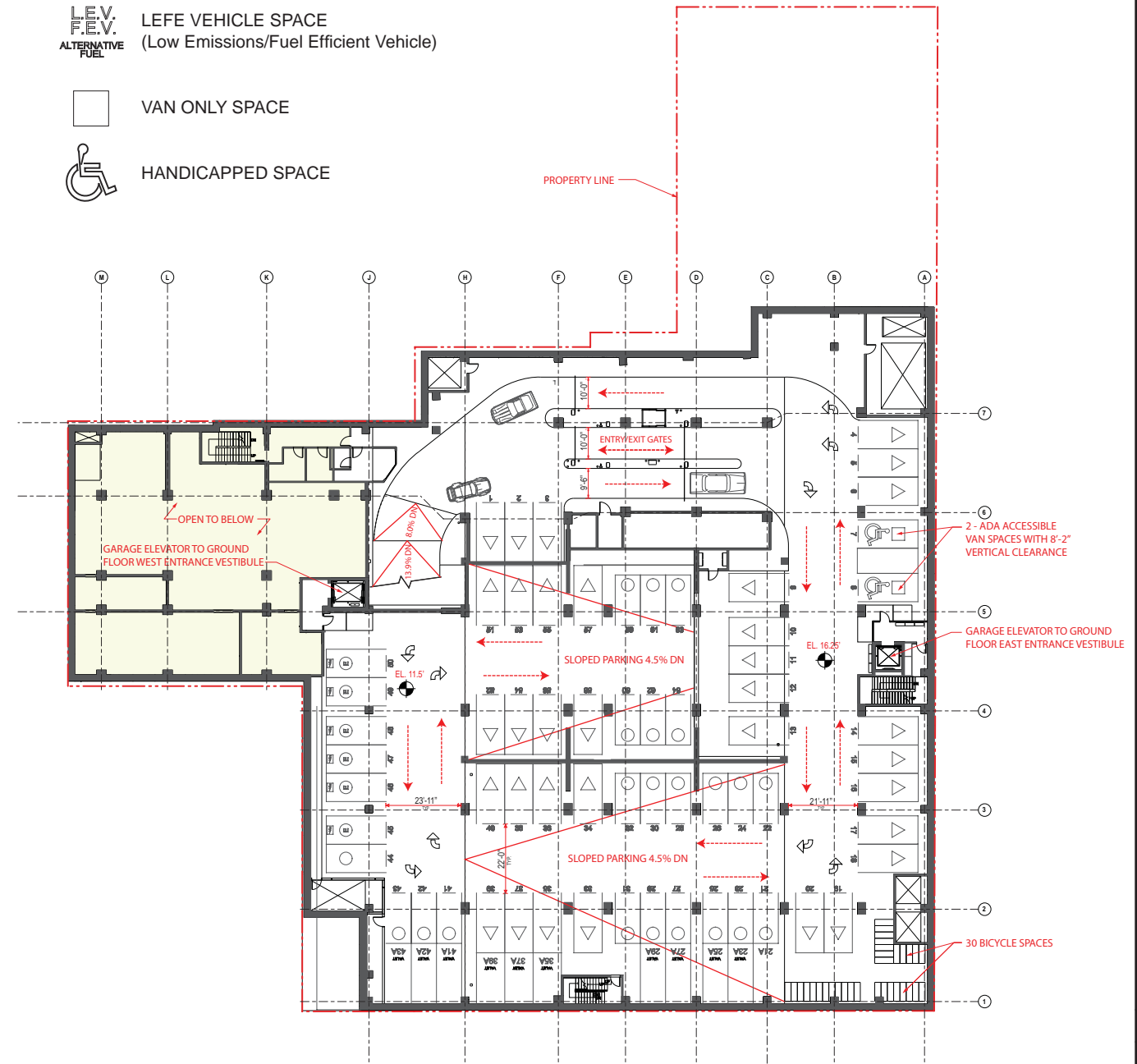
PARKING TABULATION

	Standard (9' x 19')	Compact (8' x 16')	Total	Valet	Total
G-1 LEVEL	43	27	70	10	80
G-2 LEVEL	56	27	83	11	94
G-3 LEVEL	68	27	95	15	110
G-4 LEVEL	65	15	80	15	95
TOTAL	232	96	328	51	*379

*379 TOTAL PARKING SPACES PROVIDED INCLUDING VALET SPACES



G2 PARKING PLAN



G1 PARKING PLAN

0' 50' 100' 200'
SCALE: 1" = 50' - 0"

NOTE: Interior layouts are illustrative only and subject to change on final plan.

NOTE: Parking relief for use of tandem/valet spaces was granted per previously approved 2007 Foggy Bottom Campus Plan. In accordance with this approval, the University may modify the parking garage operation further to add or remove tandem/valet spaces to accommodate parking demand needs.



THE GEORGE
WASHINGTON
UNIVERSITY
WASHINGTON, DC

SCIENCE AND
ENGINEERING
COMPLEX
(SEC)

Square 55 - Washington DC 20052

Architecture
Engineering
Planning
Interior Design

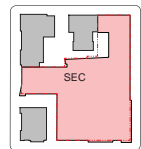
Ballinger

833 Chestnut Street Suite 1400
Philadelphia, PA 19107
V 215.446.0900
F 215.446.0901
ballinger-sec.com

Hickok Cole



KEY PLAN:



DATE:
MARCH 4, 2011

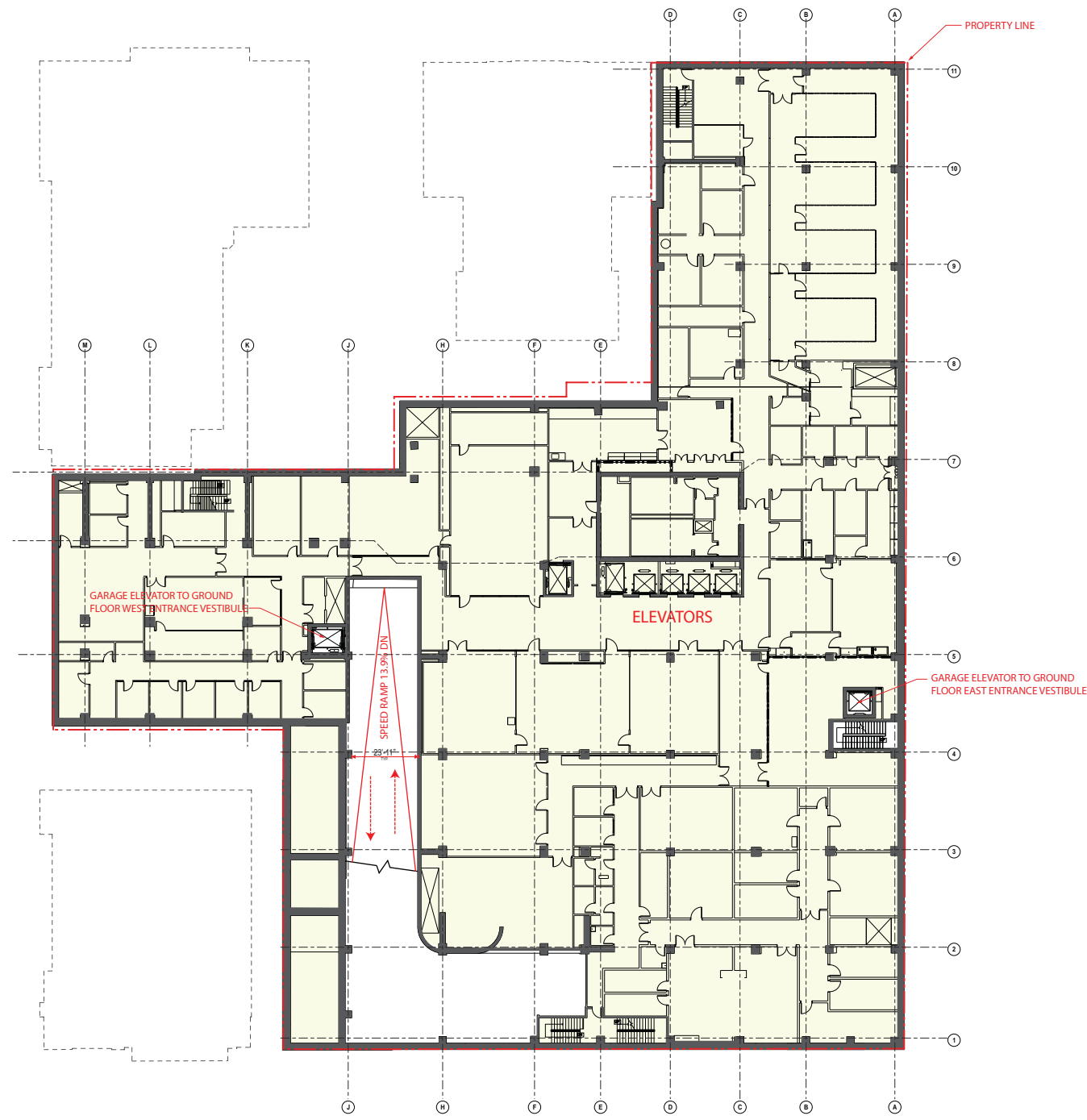
SECOND-STAGE
PUD APPLICATION

TITLE:

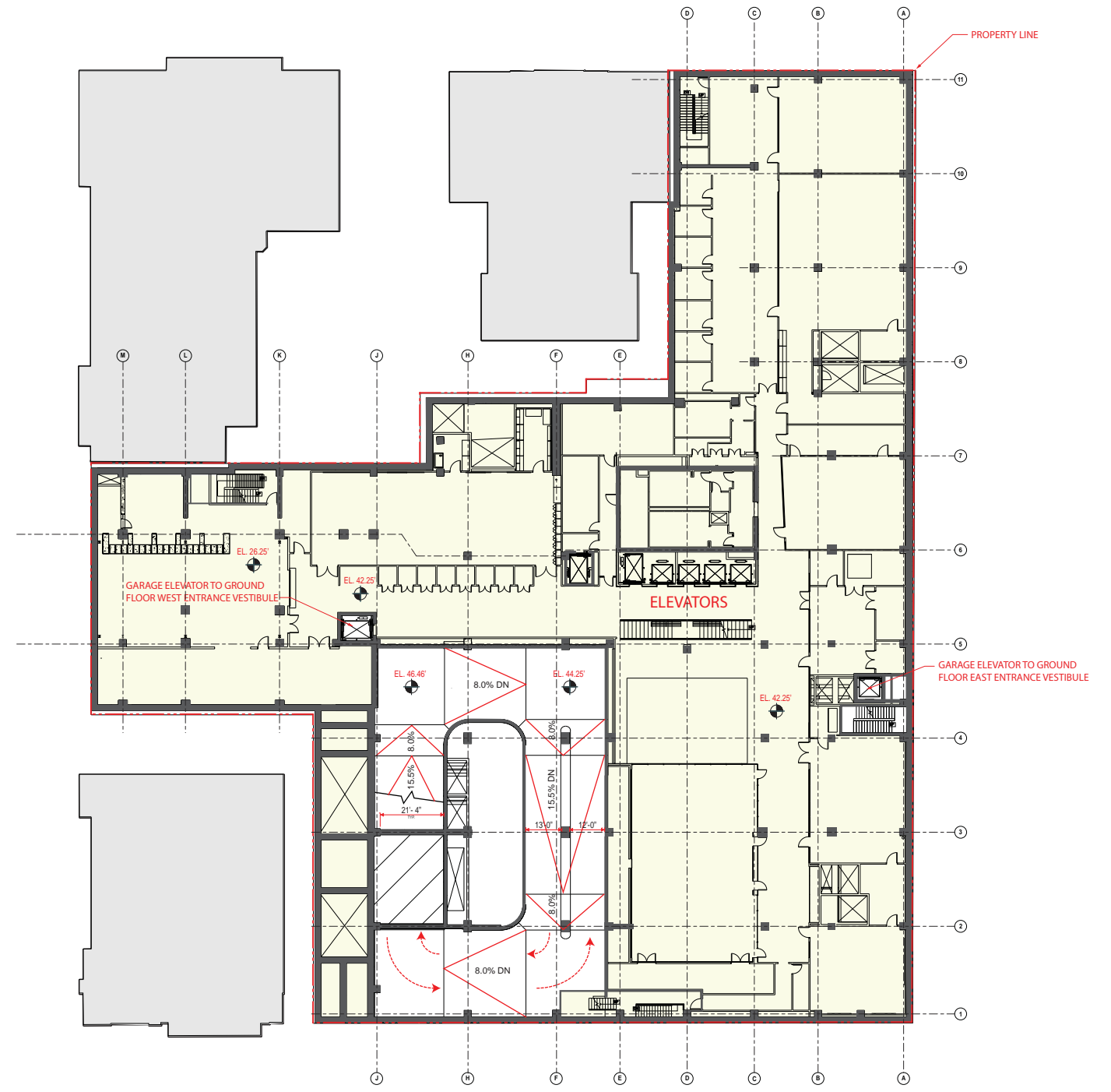
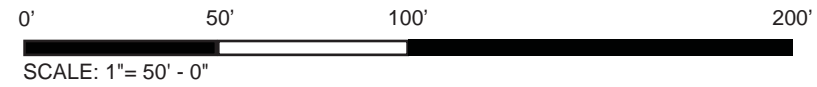
LOWER LEVEL
2 & 1 PLAN

NUMBER:

A-13



LOWER LEVEL 2 PLAN

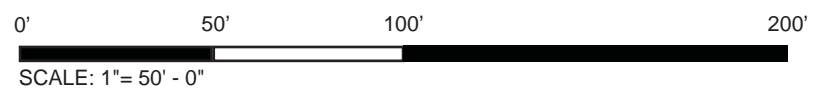


LOWER LEVEL 1 PLAN

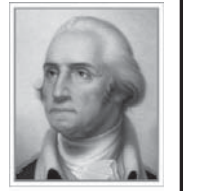
NOTE: Interior layouts are illustrative only and subject to change on final plan.



GROUND FLOOR PLAN



NOTE: Interior layouts are illustrative only and subject to change on final plan.
NOTE: Landscape layouts are illustrative only. Refer to landscape drawing pages L-01 through L-03 for additional information.



THE GEORGE WASHINGTON UNIVERSITY
WASHINGTON, DC

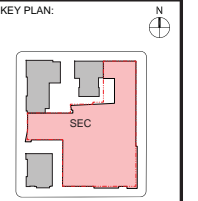
SCIENCE AND ENGINEERING COMPLEX (SEC)
Square 55 - Washington DC 20052

Architecture
Engineering
Planning
Interior Design

Ballinger

833 Chestnut Street
Suite 1400
Philadelphia, PA 19107
V 215.446.0900
F 215.446.0901
ballinger-ae.com

Hickok Cole



DATE: MARCH 4, 2011

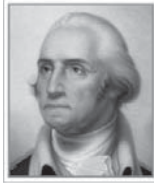
SECOND-STAGE PUD APPLICATION

TITLE:

GROUND FLOOR PLAN

NUMBER:

A-14



THE GEORGE WASHINGTON UNIVERSITY WASHINGTON, DC

SCIENCE AND ENGINEERING COMPLEX (SEC)

Square 55 - Washington DC 20052

Architecture
Engineering
Planning
Interior Design

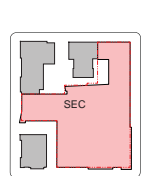
Ballinger

833 Chestnut Street Suite 1400 Philadelphia, PA 19107
V 215.446.0900 F 215.446.0901 ballinger-sec.com

Hickok Cole



KEY PLAN:



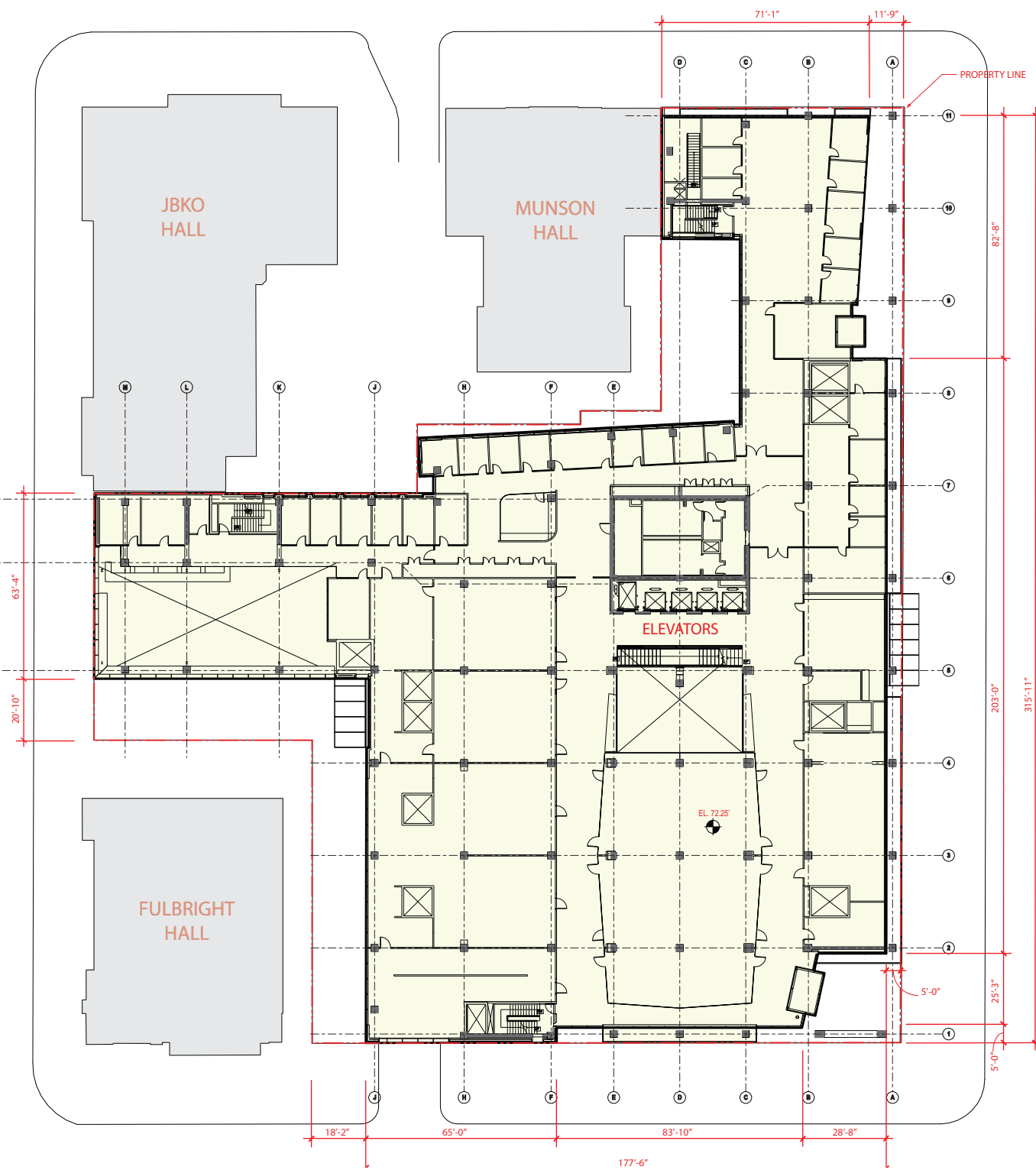
DATE: MARCH 4, 2011

SECOND-STAGE PUD APPLICATION

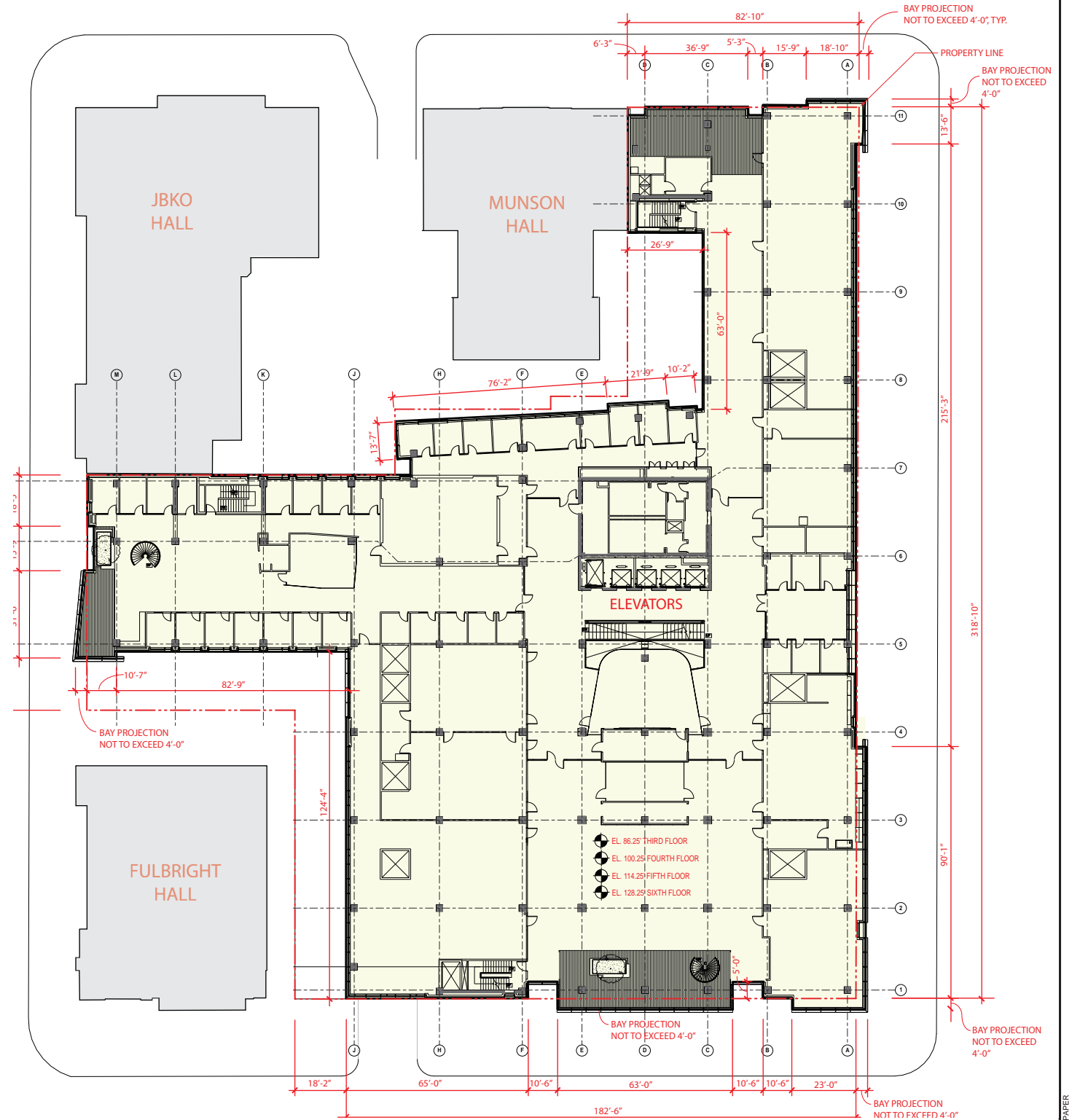
TITLE:
SECOND & TYPICAL FLOOR (3-6) PLAN

NUMBER:

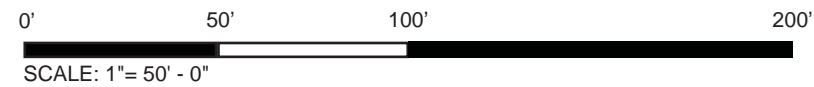
A-15



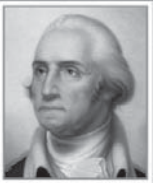
SECOND FLOOR PLAN



TYPICAL FLOOR (3-6) PLAN



NOTE: Interior layouts are illustrative only and subject to change on final plan.



THE GEORGE
WASHINGTON
UNIVERSITY
WASHINGTON, DC

SCIENCE AND
ENGINEERING
COMPLEX
(SEC)

Square 55 - Washington DC 20052

Architecture
Engineering
Planning
Interior Design

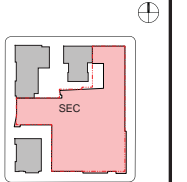
Ballinger

833 Chestnut Street
Suite 1400
Philadelphia, PA 19107
V 215.446.0900
F 215.446.0901
ballinger.com

Hickok Cole



KEY PLAN:

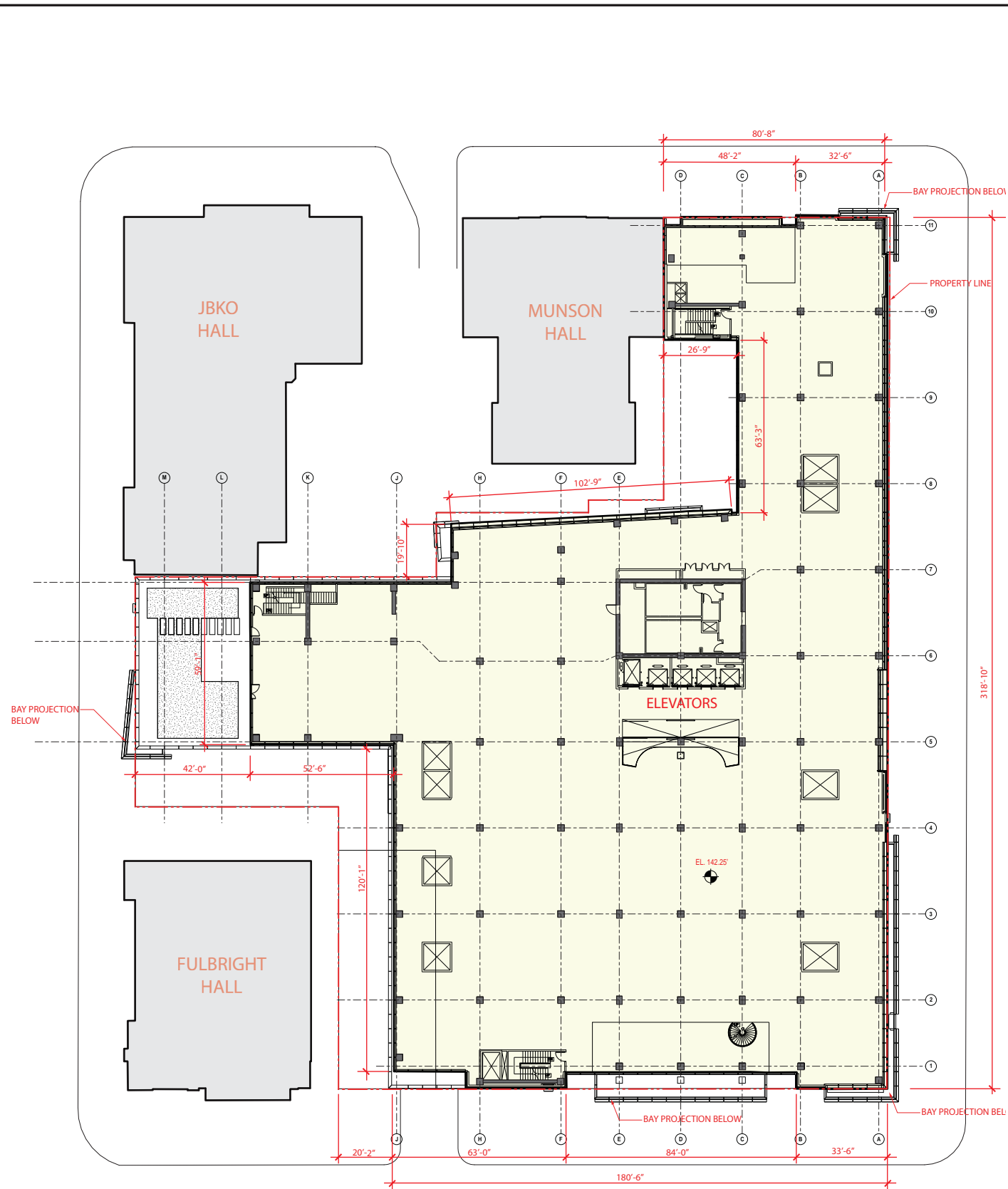


DATE:
MARCH 4, 2011

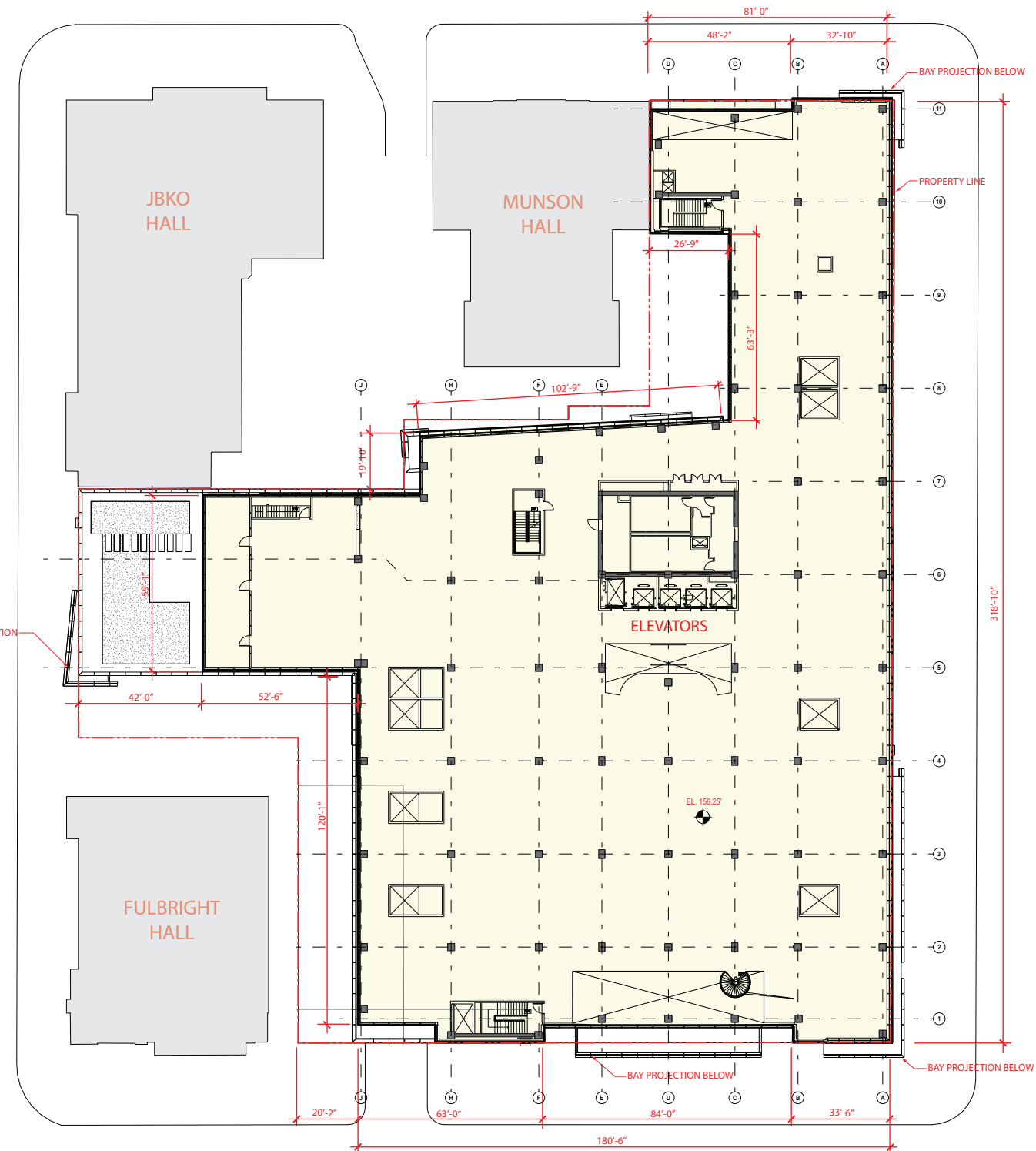
SECOND-STAGE
PUD APPLICATION

TITLE:
SEVENTH &
EIGHTH FLOOR
PLAN

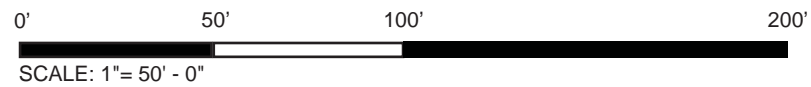
NUMBER:
A-16



SEVENTH FLOOR PLAN



EIGHTH FLOOR PLAN



NOTE: Interior layouts are illustrative only and subject to change on final plan.



THE GEORGE
WASHINGTON
UNIVERSITY
WASHINGTON, DC

SCIENCE AND
ENGINEERING
COMPLEX
(SEC)

Square 55 - Washington DC 20052

Architecture
Engineering
Planning
Interior Design

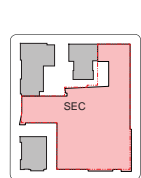
Ballinger

833 Chestnut Street
Suite 1400
Philadelphia, PA 19107
V 215.446.0900
F 215.446.0901
ballinger-sec.com

Hickok Cole



KEY PLAN:



DATE:
MARCH 4, 2011

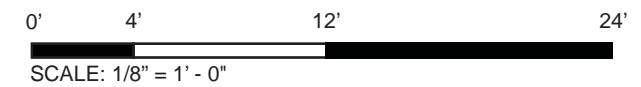
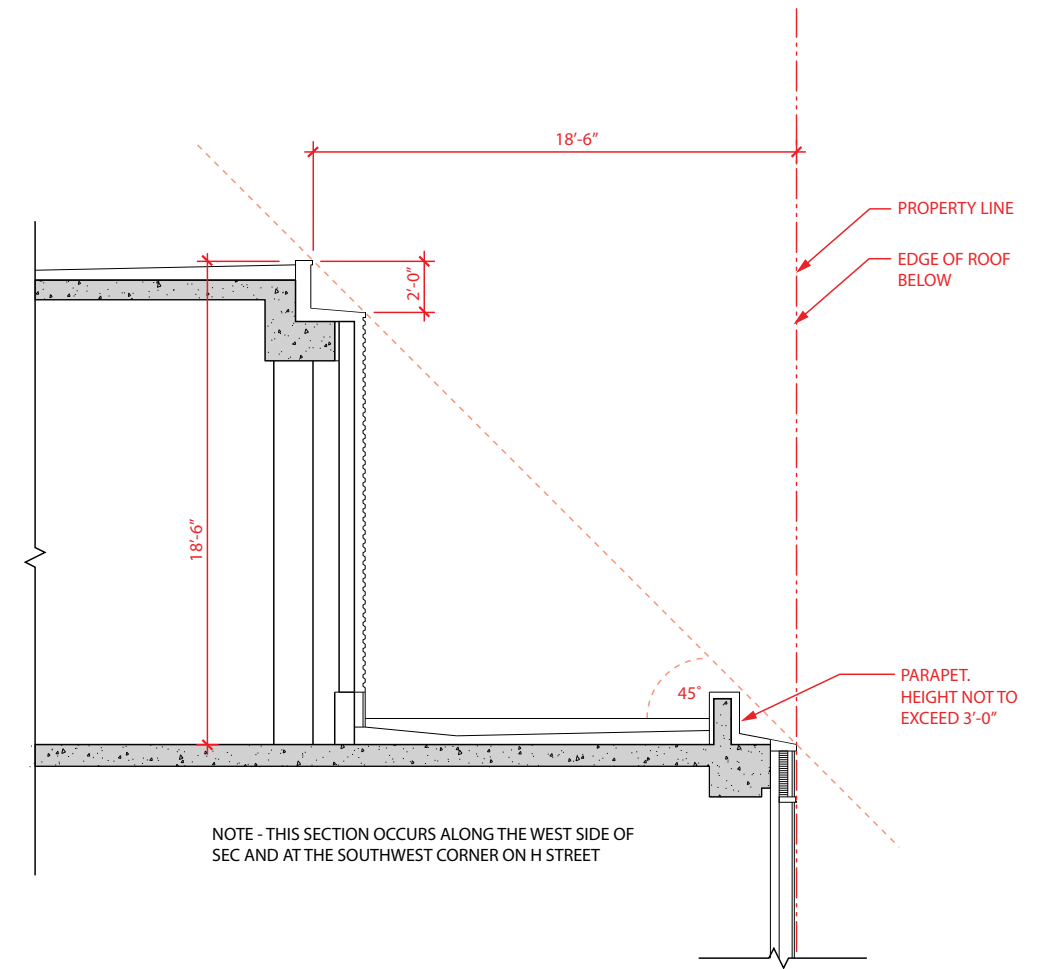
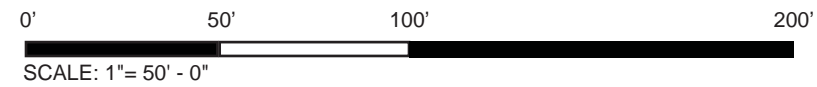
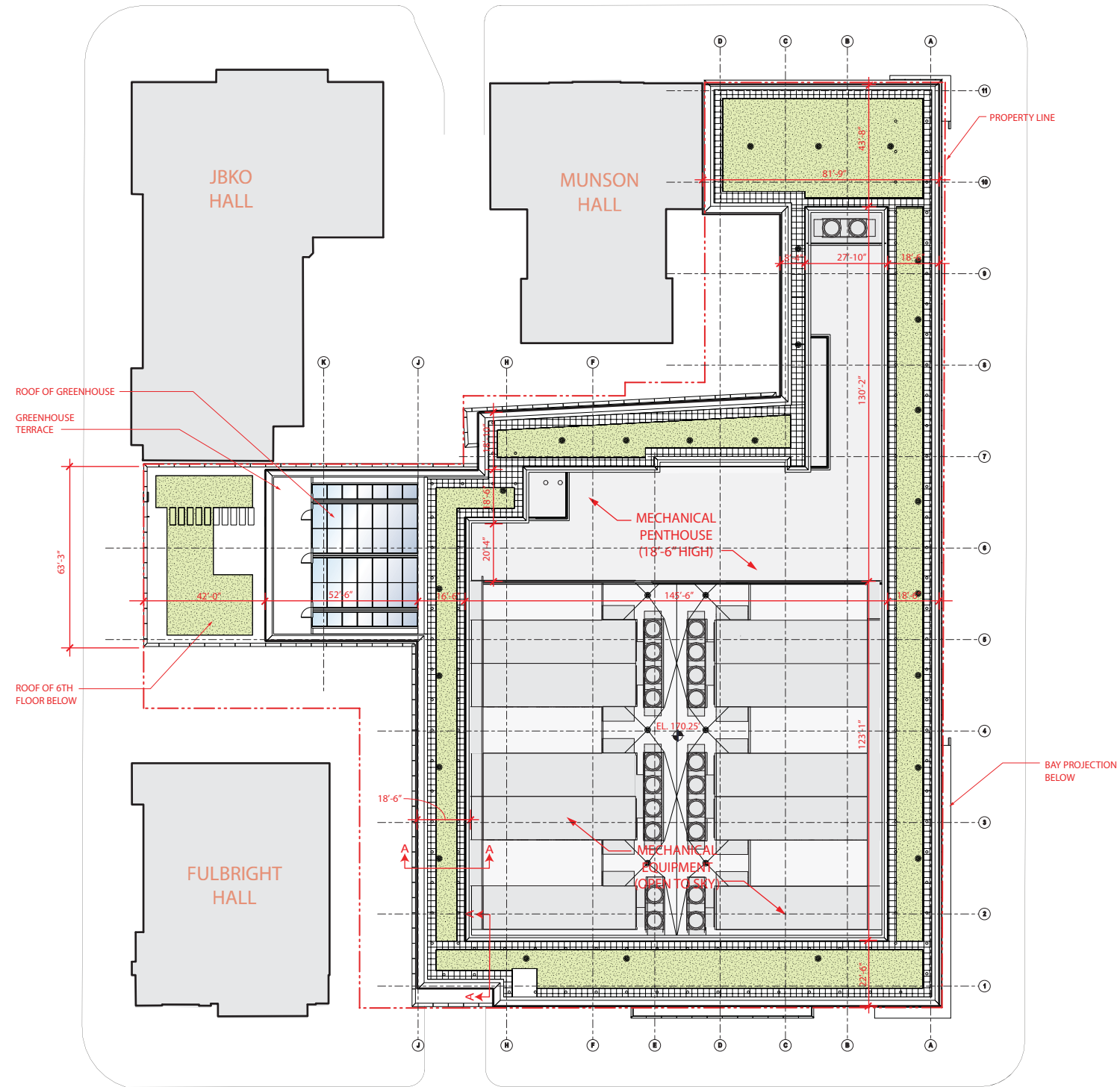
SECOND-STAGE
PUD APPLICATION

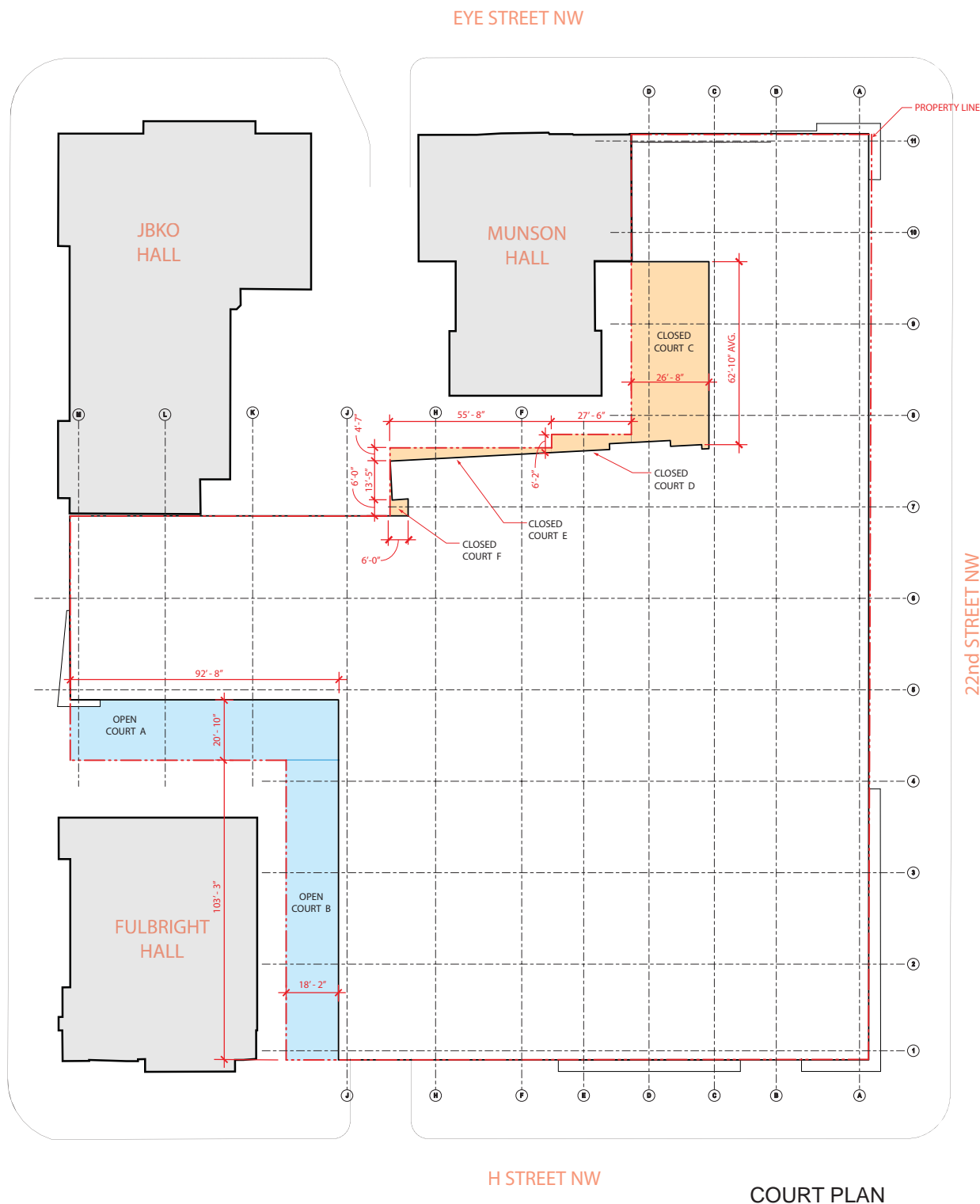
TITLE:

ROOF PLAN

NUMBER:

A-17





COURT PLAN

COURTS PER DCMR

776.1 ... "The width of a court shall be a minimum of 3 in/ft" ...

OPEN COURT A
 Width Required - 110' x 3"/ft = 27'-6"
 Width Provided - 20'-10"

OPEN COURT B
 Width Required - 110' x 3"/ft = 27'-6"
 Width Provided - 18'-2"

CLOSED COURT C
 Width Required - 112' x 3"/ft = 28'-0"
 Width Provided - 26'-8"
 Area Required - 28'-0" x 28'-0" x 2 = 1,568 sf
 Area Provided - 26'-8" x 62'-10" = 1,643 sf

CLOSED COURT D
 Width Required - 115' x 3"/ft = 28'-9"
 Width Provided - 4'-10" (avg. width)
 Area Required - 28'-9" x 28'-9" x 2 = 1653 sf
 Area Provided = 133 sf

CLOSED COURT E
 Width Required - 115' x 3"/ft = 28'-9"
 Width Provided - 3'-0" (avg. width)
 Area Required - 28'-9" x 28'-9" x 2 = 1653 sf
 Area Provided = 167 sf

CLOSED COURT F
 Width Required - 115' x 3"/ft = 28'-9"
 Width Provided - 6'-0"
 Area Required - 28'-9" x 28'-9" x 2 = 1653 sf
 Area Provided = 41 sf

DEFINITIONS - PER DCMR 199

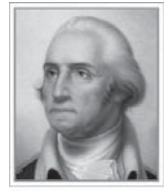
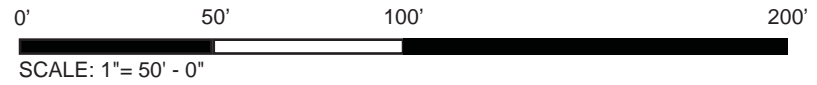
CLOSED COURT
 A court surrounded on all sides by the exterior walls of a building, or by exterior walls of a building and side or rear lot lines, or by alley lines where the alley is less than ten feet (10 ft.) in width.

OPEN COURT
 A court opening onto a street, yard, or an alley not less than ten feet (10 ft.) wide

LOT OCCUPANCY = Building Area/Lot Area

Total Building Area = 51,197 sf
 Total Lot Area = 56,885 sf

Lot Occ.Provided = 51,197 sf / 56,885 sf = 90%
 Maximum Lot Occupancy Allowable = 90%



THE GEORGE WASHINGTON UNIVERSITY WASHINGTON DC

SCIENCE AND ENGINEERING COMPLEX (SEC)

Square 55 - Washington DC 20052

Architecture Engineering Planning Interior Design

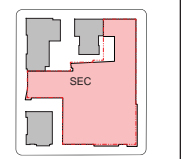
Ballinger

833 Chestnut Street Suite 1400 Philadelphia, PA 19107
 V 215.446.0900 F 215.446.0901 ballinger.com

Hickok Cole



KEY PLAN: [North arrow icon]



DATE: MARCH 4, 2011

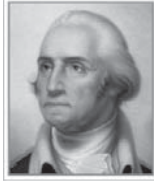
SECOND-STAGE PUD APPLICATION

TITLE:

COURT PLAN

NUMBER:

A-20



THE GEORGE WASHINGTON UNIVERSITY WASHINGTON, DC

SCIENCE AND ENGINEERING COMPLEX (SEC)

Square 55 - Washington DC 20052

Architecture
Engineering
Planning
Interior Design

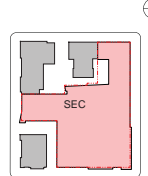
Ballinger

833 Chestnut Street Suite 1400 Philadelphia, PA 19107
V 215.446.0900 F 215.446.0901 ballinger-sec.com

Hickok Cole



KEY PLAN:



DATE: MARCH 4, 2011

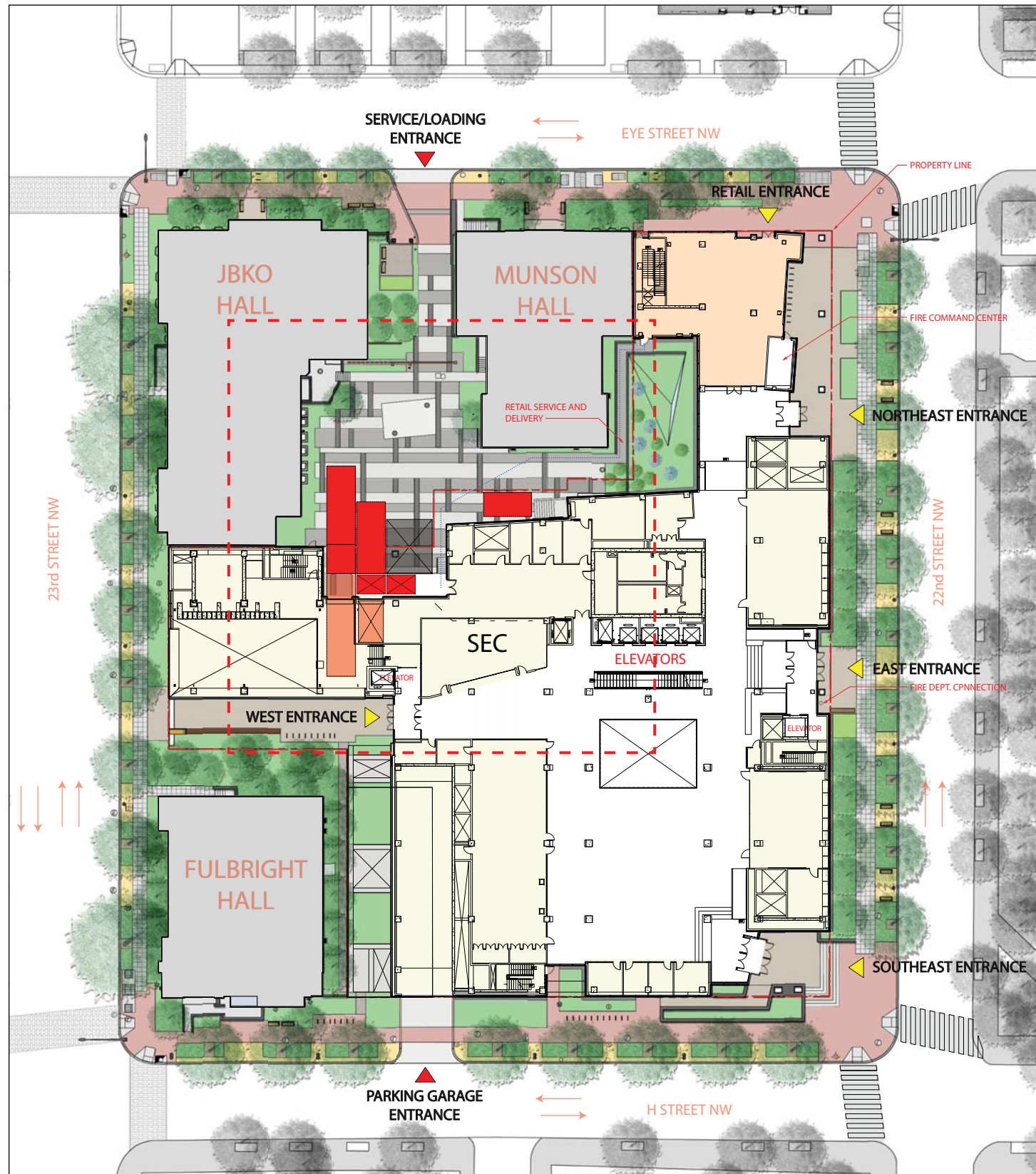
SECOND-STAGE PUD APPLICATION

TITLE:

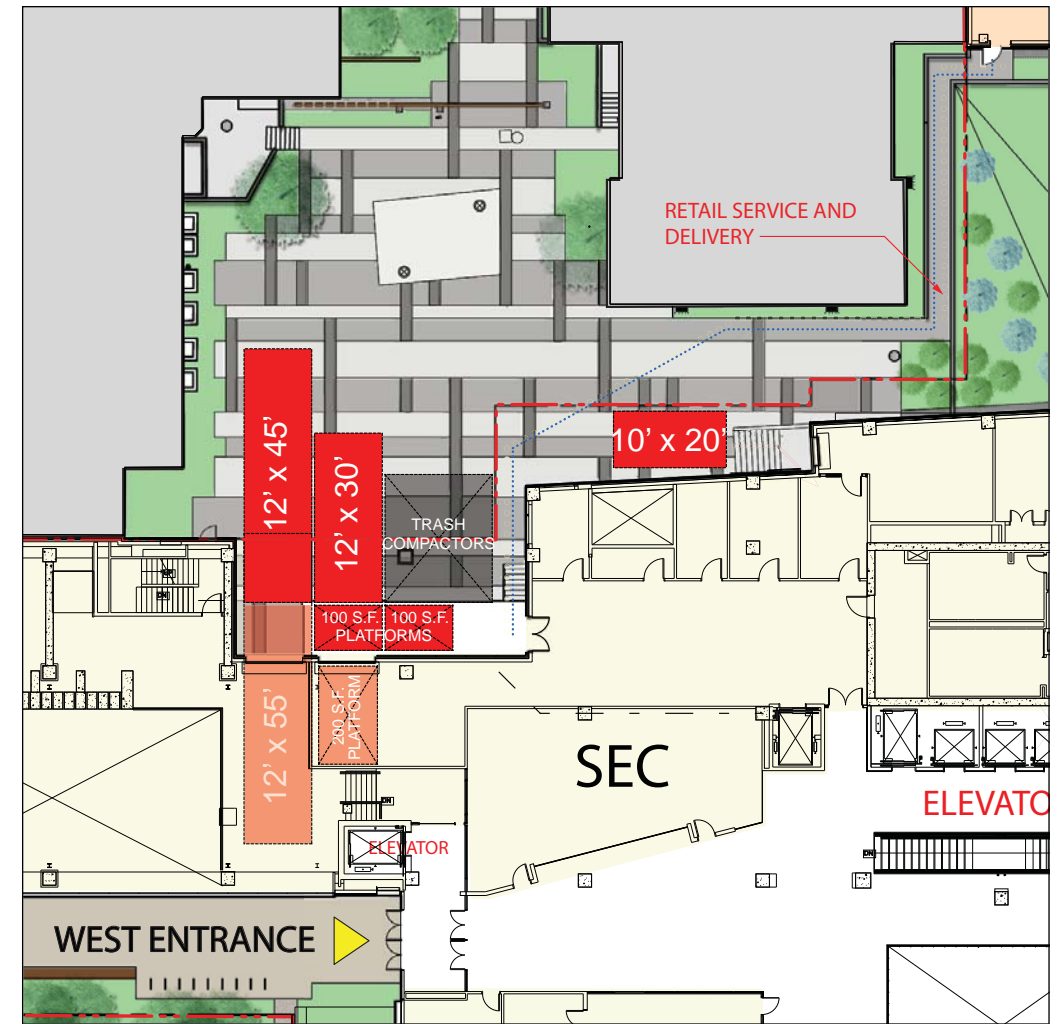
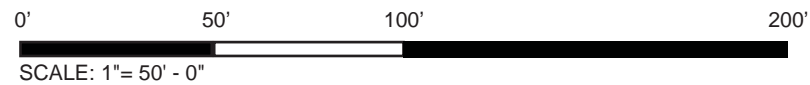
CIRCULATION AND LOADING PLAN

NUMBER:

A-21



CIRCULATION AND LOADING PLAN



CIRCULATION AND LOADING PLAN - DETAIL

- VEHICULAR ENTRANCE
- PEDESTRIAN ENTRANCE
- LOADING BERTH/SERVICE SPACE
- 55' LOADING BERTH
- COMPACTORS

NOTE:

- ONE 12' x 55' LOADING BERTH PROVIDED
 - Approximately 1 Scheduled Delivery per Quarter
 - Unloaded by Crane Inside Building
 - 14' Vertical Clearance
 - 200 S.F. Adjacent Loading Platform
- ONE 12' X 45' LOADING BERTHS PROVIDED
 - Daily Deliveries
 - 14' Vertical Clearance
- ONE 12' X 30' LOADING BERTHS PROVIDED
 - Daily Deliveries
 - 14' Vertical Clearance
- ONE 10' X 20' SERVICE SPACE PROVIDED
 - Daily Parcel/Courier Deliveries
 - 10' Vertical Clearance
- THREE LOADING PLATFORMS PROVIDED
 - 2 @ 100 S.F. Each
 - 1 @ 200 S.F.

NOTE: Interior layouts are illustrative only and subject to change on final plan.



PERSPECTIVE VIEW
CORNER OF 22nd & H STREET



THE GEORGE
WASHINGTON
UNIVERSITY
WASHINGTON, D.C.

SCIENCE AND
ENGINEERING
COMPLEX
(SEC)

Square 55 - Washington DC 20052

Architecture
Engineering
Planning
Interior Design

Ballinger

833 Chestnut Street
Suite 1830
Philadelphia, PA 19107
V 215.446.0900
F 215.446.0921
ballinger.com

Hickok Cole



KEY PLAN: 

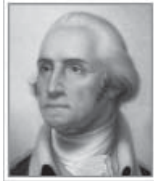


DATE:
MARCH 4, 2011

SECOND-STAGE
PUD APPLICATION

TITLE:
PERSPECTIVE
VIEW
CORNER OF
22nd & H STREET

NUMBER:
A-30



THE GEORGE
WASHINGTON
UNIVERSITY
WASHINGTON, D.C.

SCIENCE AND
ENGINEERING
COMPLEX
(SEC)

Square 55 - Washington DC 20052

Architecture
Engineering
Planning
Interior Design

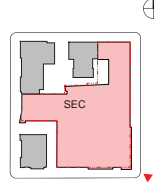
Ballinger

833 Chestnut Street
Suite 1400
Philadelphia, PA 19107
V 215.446.0900
F 215.446.0901
ballinger.com

Hickok Cole



KEY PLAN:



DATE:
MARCH 4, 2011

SECOND-STAGE
PUD APPLICATION

TITLE:
PERSPECTIVE
VIEW
SOUTHEAST
ENTRANCE

NUMBER:

A-31



PERSPECTIVE VIEW
SOUTHEAST ENTRANCE



PERSPECTIVE VIEW
EAST ENTRANCE



THE GEORGE
WASHINGTON
UNIVERSITY
WASHINGTON, DC

SCIENCE AND
ENGINEERING
COMPLEX
(SEC)

Square 55 - Washington DC 20052

Architecture
Engineering
Planning
Interior Design

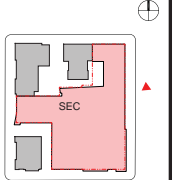
Ballinger

833 Chestnut Street
Suite 1800
Philadelphia, PA 19107
V 215.446.0900
F 215.446.0921
ballinger.com

Hickok Cole



KEY PLAN:



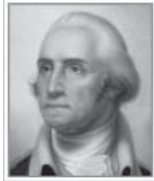
DATE:
MARCH 4, 2011

SECOND-STAGE
PUD APPLICATION

TITLE:
PERSPECTIVE
VIEW
EAST ENTRANCE

NUMBER:

A-32



THE GEORGE
WASHINGTON
UNIVERSITY
WASHINGTON, D.C.

SCIENCE AND
ENGINEERING
COMPLEX
(SEC)

Square 55 - Washington DC 20052

Architecture
Engineering
Planning
Interior Design

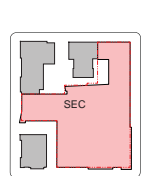
Ballinger

833 Chestnut Street
Suite 1400
Philadelphia, PA 19107
V 215.446.0900
F 215.446.0901
ballinger.com

Hickok Cole



KEY PLAN:



DATE:
MARCH 4, 2011

SECOND-STAGE
PUD APPLICATION

TITLE:
PERSPECTIVE
VIEW
CORNER OF
22nd & EYE STREET

NUMBER:

A-33



PERSPECTIVE VIEW
CORNER OF 22nd & EYE STREET



PERSPECTIVE VIEW
NORTHEAST ENTRANCE



THE GEORGE
WASHINGTON
UNIVERSITY
WASHINGTON, D.C.

SCIENCE AND
ENGINEERING
COMPLEX
(SEC)

Square 55 - Washington DC 20052

Architecture
Engineering
Planning
Interior Design

Ballinger

833 Chestnut Street
Suite 1830
Philadelphia, PA 19107
V 215.446.0900
F 215.446.0921
ballinger.com

Hickok Cole



KEY PLAN:
N



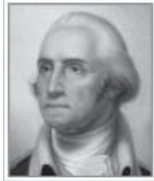
DATE:
MARCH 4, 2011

SECOND-STAGE
PUD APPLICATION

TITLE:
PERSPECTIVE
VIEW
NORTHEAST
ENTRANCE

NUMBER:

A-34



THE GEORGE
WASHINGTON
UNIVERSITY
WASHINGTON, D.C.

SCIENCE AND
ENGINEERING
COMPLEX
(SEC)

Square 55 - Washington DC 20052

Architecture
Engineering
Planning
Interior Design

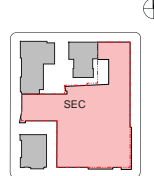
Ballinger

833 Chestnut Street
Suite 1420
Philadelphia, PA 19107
V 215.446.0900
F 215.446.0901
ballinger.com

Hickok Cole



KEY PLAN:



DATE:
MARCH 4, 2011

SECOND-STAGE
PUD APPLICATION

TITLE:
PERSPECTIVE
VIEW
EYE STREET
LOOKING WEST

NUMBER:

A-35



PERSPECTIVE VIEW
EYE STREET LOOKING WEST



PERSPECTIVE VIEW
EYE STREET LOOKING EAST



THE GEORGE
WASHINGTON
UNIVERSITY
WASHINGTON, DC

SCIENCE AND
ENGINEERING
COMPLEX
(SEC)

Square 55 - Washington DC 20052

Architecture
Engineering
Planning
Interior Design

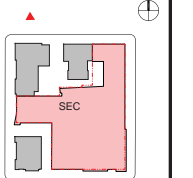
Ballinger

833 Chestnut Street
Suite 1800
Philadelphia, PA 19107
V 215.446.0900
F 215.446.0901
ballinger.com

Hickok Cole



KEY PLAN:

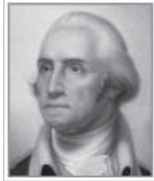


DATE:
MARCH 4, 2011

SECOND-STAGE
PUD APPLICATION

TITLE:
PERSPECTIVE
VIEW
EYE STREET
LOOKING EAST

NUMBER:
A-36



THE GEORGE
WASHINGTON
UNIVERSITY
WASHINGTON, D.C.

SCIENCE AND
ENGINEERING
COMPLEX
(SEC)

Square 55 - Washington DC 20052

Architecture
Engineering
Planning
Interior Design

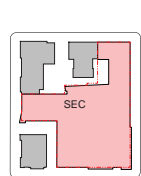
Ballinger

833 Chestnut Street
Suite 1400
Philadelphia, PA 19107
V 215.446.0900
F 215.446.0901
ballinger.com

Hickok Cole



KEY PLAN:



DATE:
MARCH 4, 2011

SECOND-STAGE
PUD APPLICATION

TITLE:
PERSPECTIVE
VIEW
CORNER OF 23rd
& EYE STREET

NUMBER:

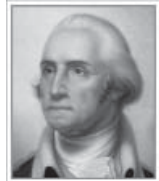
A-37



PERSPECTIVE VIEW
CORNER OF 23rd & EYE STREET
(VIEW FROM METRO EXIT)



PERSPECTIVE VIEW
CORNER OF 23rd and H STREET



THE GEORGE
WASHINGTON
UNIVERSITY
WASHINGTON, D.C.

SCIENCE AND
ENGINEERING
COMPLEX
(SEC)

Square 55 - Washington DC 20052

Architecture
Engineering
Planning
Interior Design

Ballinger

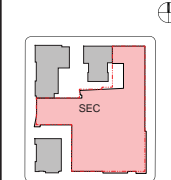
833 Chestnut Street
Suite 1800
Philadelphia, PA 19107

V 215.446.0900
F 215.446.0921
ballinger.com

Hickok Cole



KEY PLAN:



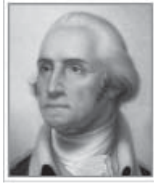
DATE:
MARCH 4, 2011

SECOND-STAGE
PUD APPLICATION

TITLE:
PERSPECTIVE
VIEW
CORNER OF
23rd & H STREET

NUMBER:

A-38



THE GEORGE
WASHINGTON
UNIVERSITY
WASHINGTON, DC

SCIENCE AND
ENGINEERING
COMPLEX
(SEC)

Square 55 - Washington DC 20052

Architecture
Engineering
Planning
Interior Design

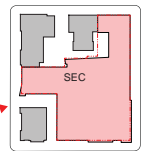
Ballinger

833 Chestnut Street
Suite 1400
Philadelphia, PA 19107
V 215.446.0900
F 215.446.0901
ballinger.com

Hickok Cole



KEY PLAN:



DATE:
MARCH 4, 2011

SECOND-STAGE
PUD APPLICATION

TITLE:
PERSPECTIVE
VIEW
WEST ENTRANCE

NUMBER:

A-39



PERSPECTIVE VIEW
WEST ENTRANCE