
THE GEORGE
WASHINGTON
UNIVERSITY

WASHINGTON, DC

Neighborhood Working Group

2021 Mount Vernon Campus Planning

Community Engagement

September 8, 2021 at 4:00PM



Agenda

- Overview
- Student Enrollment
- Development Plan
- Athletic and Recreation Facilities
- Universal Accessibility
- Transportation and Parking
- Sustainability Integration
- Next Steps



Overview

- Mount Vernon Campus offers a residential campus experience clearly distinctive from the Foggy Bottom experience.
- Strategic Campus & Facilities Master Plan
 - An Urban Retreat
 - A Student Recreation & Wellness Hub
 - Universal Accessibility with Connected Campus Landscapes
- The 2021 Mount Vernon Campus Plan also proposes a reduced development program compared to the 2010 Mount Vernon Campus Plan.



Student Enrollment

- Similarly to the 2010 MVC Plan the 2021 Campus Plan, student headcount shall not exceed 1,725 on a daily basis, and the Mount Vernon full-time equivalent shall not exceed 1,100 on a daily basis.
- Of these students, the number of students who have housing assignments on the Mount Vernon Campus shall not exceed 800 students.



Development Plan

- Future campus development has been thoughtfully considered and intentionally limited to address only specifically identified university needs and priorities.
- As a result, the development program proposed in the 2021 Campus Plan includes only three new development sites, representing a significant [~40%] reduction from the development program approved by the Zoning Commission in the 2010 Campus Plan.
- Exhibit 1 Review



Development Plan (Continued)

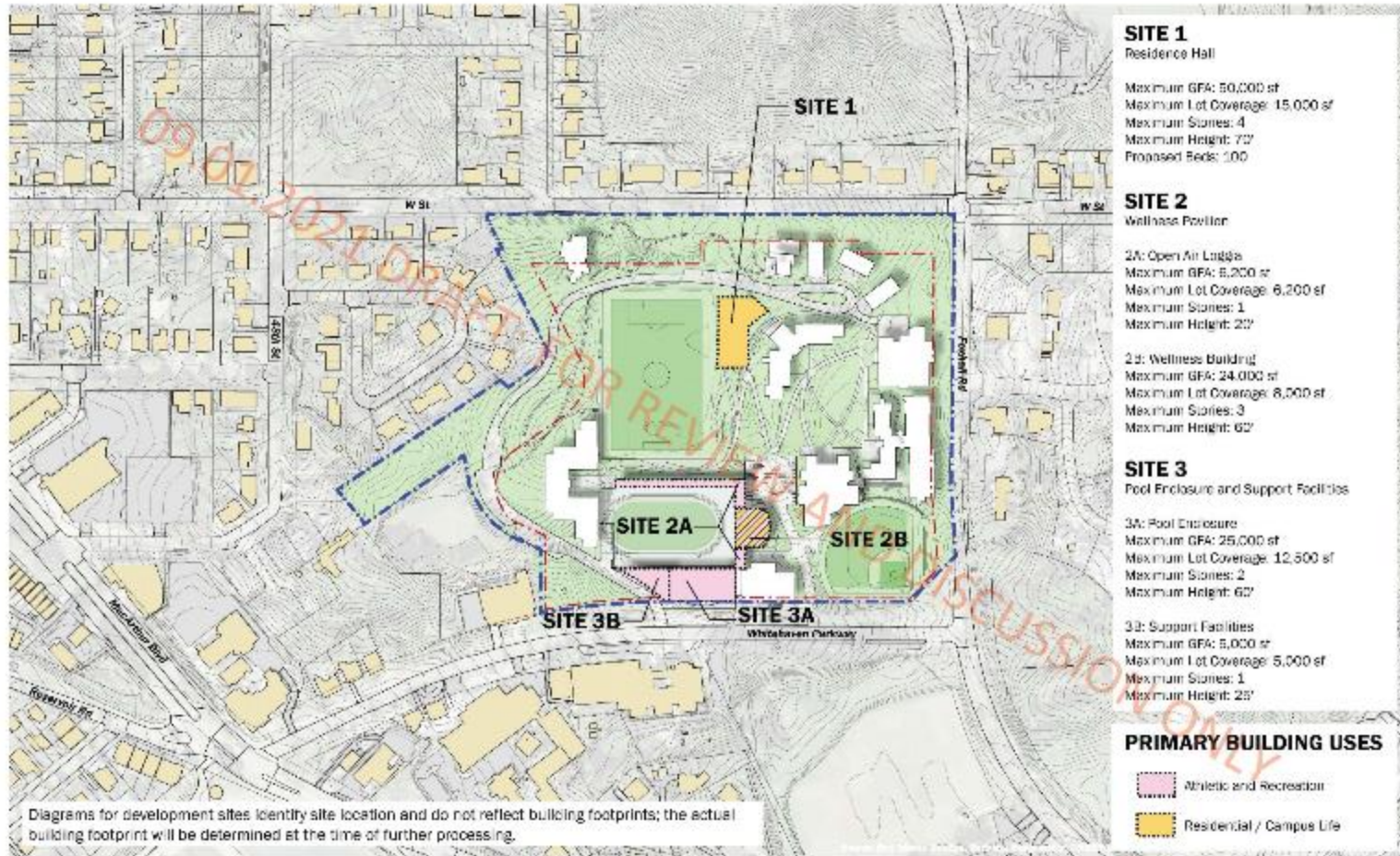
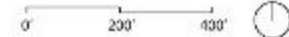


EXHIBIT 1: PROPOSED DEVELOPMENT SITES



Athletic and Recreation Facilities

- Current Outdoor Athletic Facilities
- Proposed Improvements
- Field Lighting Considerations
 - A. Defined Scope of User Groups
 - B. Controls on Athletic Field Use
 - C. Light Mitigation Strategies
 - D. Sound Mitigation Strategies
 - E. Communication and Engagement with Neighbors



Athletic and Recreation Facilities

- Current Outdoor Athletic Facilities
 - Current Varsity Sports – Women’s Soccer, Men’s Soccer, Women’s Lacrosse and Women’s Softball
 - GW students participate in 36 different club sports teams, 18 of which are outdoor programs that currently compete for very limited remaining field time at the Mount Vernon Campus. As a result, club teams currently rent and travel to non-GW facilities in excess of 250 field hours each year.
 - GW also supports an active intramural program which does not currently have any access to the Mount Vernon facilities because of the extremely limited availability.



Athletic and Recreation Facilities

- Proposed Improvements
 - Convert the tennis courts into a running track with a multi-purpose infield and reduce the existing light fixtures from (8) to (6) new light fixtures with glare shield
 - Enclose the existing Pool for all year use.
 - New Wellness Building to include recreation and wellness program space
 - Replace existing seating with new accessible bleachers at both the soccer/lacrosse field and the softball field.
 - Field Lighting



Athletic and Recreation Facilities

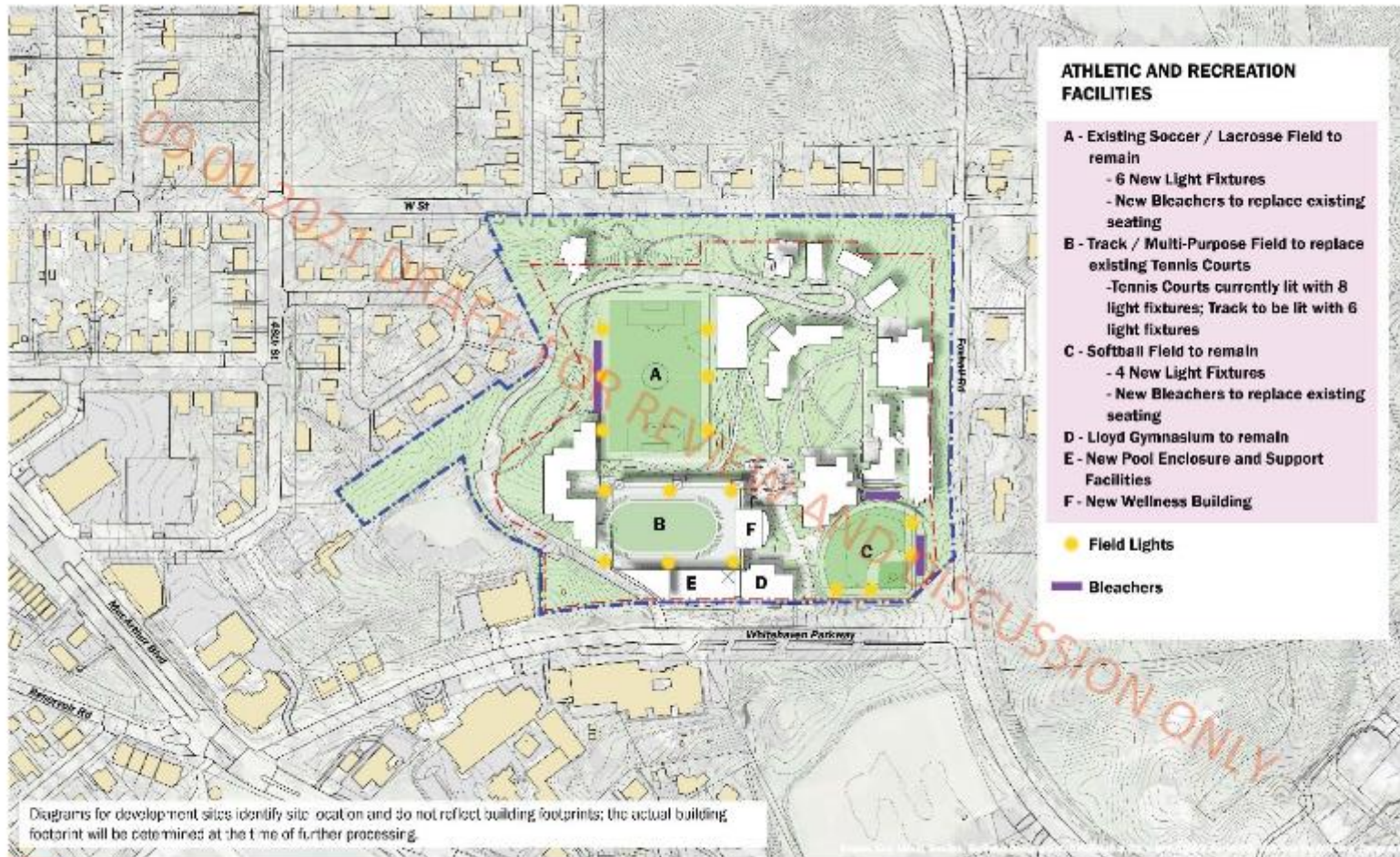


EXHIBIT 2: ATHLETIC AND RECREATION FACILITIES



Athletic and Recreation Facilities

Field Lighting Concepts

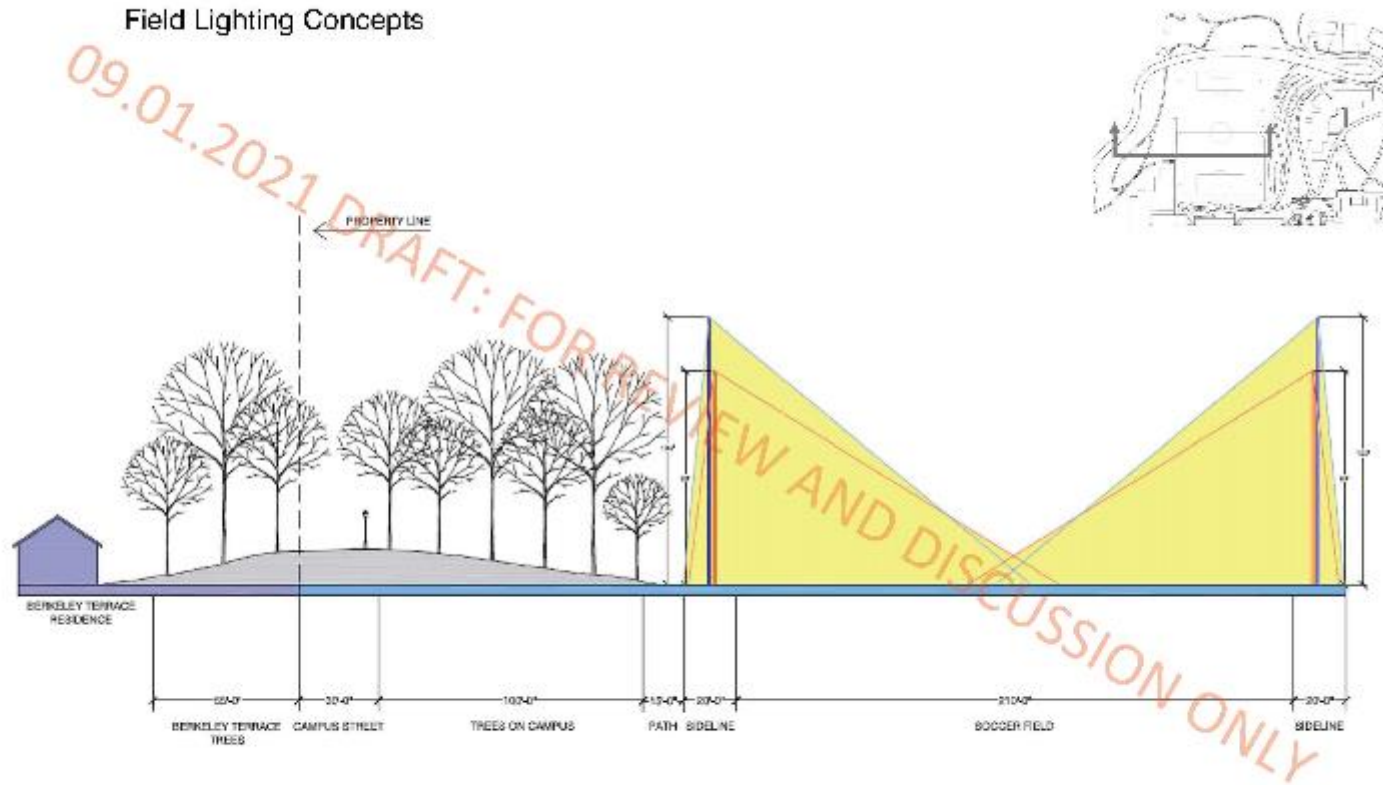
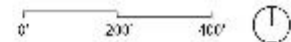


EXHIBIT 2A: FIELD LIGHTING CONCEPTS



~75' from the Residence to the Property Line and ~145' from the Property Line to the Field Lights (~220' Residence to Field Lights).



THE GEORGE WASHINGTON UNIVERSITY WASHINGTON, DC

MOUNT VERNON CAMPUS PLAN

OVERVIEW OF CURRENT TYPICAL ATHLETIC FIELD USE¹

TYPICAL FALL OR SPRING SEMESTER WEEKDAY²

NO VARSITY HOME GAME SCHEDULED

8:00AM	WOMEN'S SOCCER PRACTICE
9:00AM	PRACTICE
10:00AM	MEN'S SOCCER PRACTICE
11:00AM	PRACTICE
12:00PM	
1:00PM	LACROSSE PRACTICE
2:00PM	
3:00PM	
4:00PM	GW CLUB SPORTS PRACTICE ³
5:00PM	
SUNSET	

← PRACTICE RESCHEDULED BY GAME; OFTEN CREATES CLASS CONFLICTS

TYPICAL FALL OR SPRING SEMESTER WEEKDAY

VARSIITY HOME GAME SCHEDULED

8:00AM	WOMEN'S SOCCER PRACTICE
9:00AM	PRACTICE
10:00AM	MEN'S SOCCER PRACTICE
11:00AM	PRACTICE
12:00PM	
1:00PM	SOCCER OR LACROSSE GAME (INCLUDING SET UP AND PRE-GAME TIME)
2:00PM	
3:00PM	
4:00PM	
5:00PM	
SUNSET	

TYPICAL FALL OR SPRING SEMESTER WEEKEND DAY

NO VARSITY HOME GAME SCHEDULED

8:00AM	WOMEN'S SOCCER PRACTICE
9:00AM	PRACTICE
10:00AM	MEN'S SOCCER PRACTICE
11:00AM	PRACTICE
12:00PM	
1:00PM	MOUNT VERNON STUDENT USE
2:00PM	
3:00PM	
4:00PM	GW CLUB SPORTS PRACTICE/GAMES
5:00PM	
SUNSET	

← ACTIVITIES DISRUPTED BY GAME; NO AVAILABLE TIME TO SHIFT

TYPICAL FALL OR SPRING SEMESTER WEEKEND DAY

VARSIITY HOME GAME SCHEDULED

8:00AM	WOMEN'S SOCCER PRACTICE
9:00AM	PRACTICE
10:00AM	MEN'S SOCCER PRACTICE
11:00AM	PRACTICE
12:00PM	
1:00PM	
2:00PM	SOCCER OR LACROSSE GAME (INCLUDING SET UP AND PRE-GAME TIME)
3:00PM	
4:00PM	
5:00PM	
SUNSET	

TYPICAL SUMMER DAY

LEGEND AND NOTES:

8:00AM	GW ATHLETICS CAMPS OR USE BY LOCAL SCHOOL GROUPS
9:00AM	
10:00AM	
11:00AM	
12:00PM	
1:00PM	
2:00PM	GW SPECIAL PROGRAMS
3:00PM	
4:00PM	
5:00PM	LOCAL CLUB TEAMS
SUNSET	

	GW VARSITY PRACTICE
	GW VARSITY GAME [AMPLIFIED SOUND PRE-GAME & GAME ONLY]
	GW CLUB SPORT PRACTICE
	GW CLUB SPORT PRACTICE/GAMES
	OTHER GW USE
	NEIGHBORHOOD/NON-GW USE

¹ The multipurpose athletic field is generally fully booked 7 days/week (in non-COVID)
² Weekday non-GW use (e.g., Lab School PE) is currently accommodated on the softball field.
³ There are 36 active club sports teams at GW, 18 of which are outdoor teams that currently compete for very limited field time at MVC. As a result, these teams currently rent and travel to non-GW facilities in excess of 250 field hours each year. GW also has an active intramural program which does not currently have access to the MVC facilities because of the limited availability.

Field Lighting

Outline of GW Proposal for MVC Athletic Facilities Under the 2021 Campus Plan (Shown on 8/11/21)

- A. Confirm Scope (Current Schedule/Field Utilization, Non-COVID Conditions)



THE GEORGE WASHINGTON UNIVERSITY
WASHINGTON, DC

MOUNT VERNON CAMPUS PLAN

OVERVIEW OF PROPOSED TYPICAL ATHLETIC FIELD USE¹

TYPICAL FALL OR SPRING SEMESTER WEEKDAY NO VARSITY HOME GAME SCHEDULED		TYPICAL FALL OR SPRING SEMESTER WEEKDAY VARSITY HOME GAME SCHEDULED	
8:00AM	WOMEN'S SOCCER PRACTICE	8:00AM	WOMEN'S SOCCER PRACTICE
9:00AM		9:00AM	
10:00AM	MEN'S SOCCER PRACTICE	10:00AM	MEN'S SOCCER PRACTICE
11:00AM		11:00AM	
12:00PM		12:00PM	
1:00PM	LACROSSE PRACTICE	1:00PM	LACROSSE PRACTICE
2:00PM		2:00PM	
3:00PM		3:00PM	
4:00PM	GW CLUB AND INTRAMURAL SPORTS PRACTICE AND/OR NEIGHBORHOOD/ NON-GW ACTIVITIES ²	4:00PM	SOCCER OR LACROSSE GAME (INCLUDING SET UP AND PRE-GAME TIME)
5:00PM		5:00PM	
6:00PM		6:00PM	
7:00PM		7:00PM	
8:00PM		8:00PM	
9:00PM		9:00PM	
TYPICAL FALL OR SPRING SEMESTER WEEKEND DAY NO VARSITY HOME GAME SCHEDULED		TYPICAL FALL OR SPRING SEMESTER WEEKEND DAY VARSITY HOME GAME SCHEDULED	
8:00AM	WOMEN'S SOCCER PRACTICE	8:00AM	WOMEN'S SOCCER PRACTICE
9:00AM		9:00AM	
10:00AM	MEN'S SOCCER PRACTICE	10:00AM	MEN'S SOCCER PRACTICE
11:00AM		11:00AM	
12:00PM	MOUNT VERNON STUDENT USE	12:00PM	
1:00PM		1:00PM	SOCCER OR LACROSSE GAME (INCLUDING SET UP AND PRE-GAME TIME)
2:00PM		2:00PM	
3:00PM		3:00PM	
4:00PM	GW CLUB SPORTS PRACTICE/GAMES AND/OR NEIGHBORHOOD/ NON-GW ACTIVITIES	4:00PM	
5:00PM		5:00PM	
6:00PM		6:00PM	
7:00PM		7:00PM	GW CLUB SPORTS PRACTICE/GAMES
8:00PM		8:00PM	
9:00PM		9:00PM	

TYPICAL SUMMER DAY	LEGEND AND NOTES:
8:00AM	GW VARSITY PRACTICE
9:00AM	GW VARSITY GAME [AMPLIFIED SOUND PRE-GAME & GAME ONLY]
10:00AM	GW CLUB/INTRAMURAL SPORT PRACTICE
11:00AM	GW CLUB SPORT PRACTICE/GAMES
12:00PM	OTHER GW USE
1:00PM	NEIGHBORHOOD/NON-GW USE
2:00PM	
3:00PM	
4:00PM	
5:00PM	
6:00PM	
7:00PM	
8:00PM	
9:00PM	

¹ Multi-purpose athletic field anticipated to be scheduled until 10:00pm up to 5 nights/week.
² There are 36 active club sports teams at GW, 18 of which are outdoor teams that currently compete for very limited field time at MVC. As a result, these teams currently rent and travel to non-GW facilities in excess of 250 field hours each year. Additional field capacity would also allow GW to accommodate some of its intramural teams, most of which do not currently have access to MVC facilities, as well as community-use programs.

Field Lighting

Outline of GW Proposal for MVC Athletic Facilities Under the 2021 Campus Plan (Shown on 8/11/21)

A. Confirm Scope (8/11/21 Proposed Schedule)



MOUNT VERNON CAMPUS PLAN

OVERVIEW OF PROPOSED TYPICAL ATHLETIC FIELD USE¹

TYPICAL FALL OR SPRING SEMESTER WEEKDAY
NO VARSITY HOME GAME SCHEDULED

8:00AM	WOMEN'S SOCCER PRACTICE
9:00AM	
10:00AM	
10:00AM	MEN'S SOCCER PRACTICE
11:00AM	
12:00PM	LACROSSE PRACTICE
1:00PM	
2:00PM	
3:00PM	
4:00PM	GW CLUB AND INTRAMURAL SPORTS PRACTICE AND/OR NEIGHBORHOOD/ NON-GW ACTIVITIES ²
5:00PM	
6:00PM	
7:00PM	
8:00PM	
9:00PM	

TYPICAL FALL OR SPRING SEMESTER WEEKDAY
VARSITY HOME GAME SCHEDULED

8:00AM	WOMEN'S SOCCER PRACTICE
9:00AM	
10:00AM	
10:00AM	MEN'S SOCCER PRACTICE
11:00AM	
12:00PM	LACROSSE PRACTICE
1:00PM	
2:00PM	
3:00PM	
4:00PM	SOCCER OR LACROSSE GAME (INCLUDING SET UP AND PRE-GAME TIME)
5:00PM	
6:00PM	
7:00PM	
8:00PM	
9:00PM	

TYPICAL FALL OR SPRING SEMESTER WEEKEND DAY
NO VARSITY HOME GAME SCHEDULED

8:00AM	WOMEN'S SOCCER PRACTICE
9:00AM	
10:00AM	
10:00AM	MEN'S SOCCER PRACTICE
11:00AM	
12:00PM	MOUNT VERNON STUDENT USE
1:00PM	
2:00PM	
3:00PM	
4:00PM	GW CLUB SPORTS PRACTICE/GAMES AND/OR NEIGHBORHOOD/ NON-GW ACTIVITIES
5:00PM	
6:00PM	
7:00PM	
8:00PM	
9:00PM	

TYPICAL FALL OR SPRING SEMESTER WEEKEND DAY
VARSITY HOME GAME SCHEDULED

8:00AM	WOMEN'S SOCCER PRACTICE
9:00AM	
10:00AM	
10:00AM	MEN'S SOCCER PRACTICE
11:00AM	
12:00PM	SOCCER OR LACROSSE GAME (INCLUDING SET UP AND PRE-GAME TIME)
1:00PM	
2:00PM	
3:00PM	
4:00PM	
5:00PM	
6:00PM	
7:00PM	GW CLUB SPORTS PRACTICE/GAMES
8:00PM	
9:00PM	

TYPICAL SUMMER DAY

8:00AM	GW ATHLETICS CAMPS OR USE BY LOCAL SCHOOL GROUPS
9:00AM	
10:00AM	
11:00AM	
12:00PM	
1:00PM	GW SPECIAL PROGRAMS
2:00PM	
3:00PM	
4:00PM	LOCAL CLUB TEAMS/ NEIGHBORHOOD ACTIVITIES
5:00PM	
6:00PM	
7:00PM	
8:00PM	
9:00PM	

LEGEND AND NOTES:

	GW VARSITY PRACTICE
	GW VARSITY GAME [AMPLIFIED SOUND PRE-GAME & GAME ONLY]
	GW CLUB/INTRAMURAL SPORT PRACTICE
	GW CLUB SPORT PRACTICE/GAMES
	OTHER GW USE
	NEIGHBORHOOD/NON-GW USE

¹ Multi-purpose athletic field anticipated to be scheduled until 10:00pm up to 5 nights/week.

² There are 36 active club sports teams at GW, 18 of which are outdoor teams that currently compete for very limited field time at MVC. As a result, these teams currently rent and travel to non-GW facilities in excess of 250 field hours each year. Additional field capacity would also allow GW to accommodate some of its intramural teams, most of which do not currently have access to MVC facilities, as well as community-use programs.

Field Lighting

Outline of GW Proposal for MVC Athletic Facilities Under the 2021 Campus Plan

- Lights will only be on (2) hours past Sunset from August 16th – May 1st and will be off at 10:00pm May 1st – August 16th. (Adds 210 hours per Semester / 420 hours per Academic year)

- August 16th – Sunset 8:00pm
- September 16th – Sunset 7:14pm
- October 16th – Sunset 6:27pm
- November 16th – Sunset 4:53pm
- December 16th – Sunset 4:47pm
- January 16th – Sunset 5:11pm
- February 16th – Sunset 5:46pm
- March 16th – Sunset 7:16pm
- April 16th – Sunset 7:46pm
- May 16th – Sunset 8:00pm



THE GEORGE WASHINGTON UNIVERSITY
WASHINGTON, DC

Athletic and Recreation Facilities

- Field Lighting Considerations
 - A. Defined Scope of User Groups
 - B. Controls on Athletic Field Use
 - C. Light Mitigation Strategies
 - D. Sound Mitigation Strategies
 - E. Communication and Engagement with Neighbors



Universal Accessibility

- The 2021 Campus Plan seeks to significantly improve these conditions and promote a welcoming and inclusive campus environment, prioritizing universal accessibility in the design of pathways and connections to provide safe and barrier-free routes to existing open spaces, landscaped areas, athletic facilities, and campus buildings.



Transportation and Parking

- Transportation Demand Management
- Campus Vehicular Circulation
- Off-Campus Parking Policy



Transportation and Parking

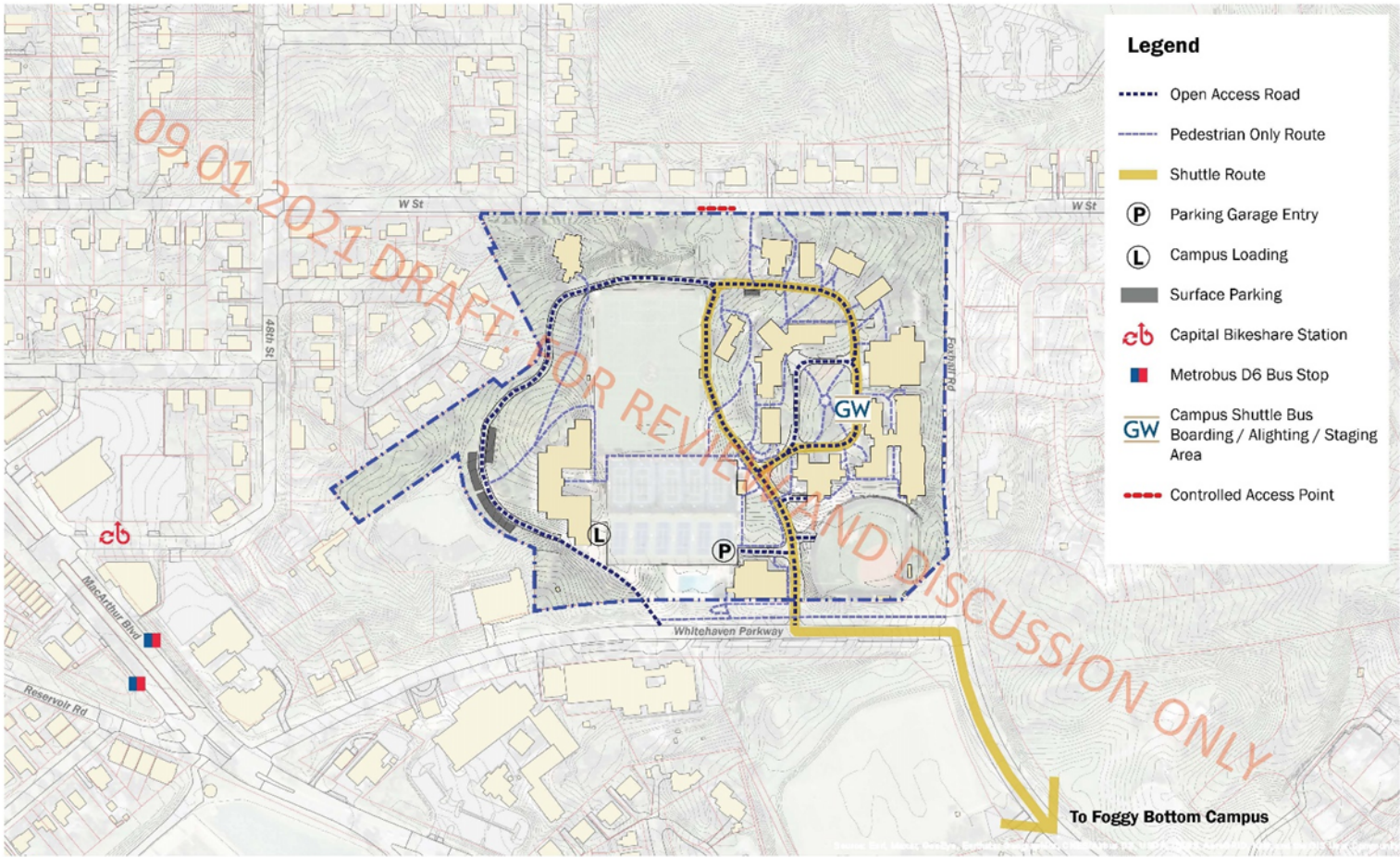


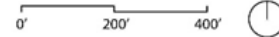
EXHIBIT 3A: EXISTING CAMPUS CIRCULATION, PARKING, AND LOADING FACILITIES



Transportation and Parking



EXHIBIT 3B: PROPOSED CAMPUS CIRCULATION, PARKING, AND LOADING FACILITIES



Sustainability Integration

- A key objective of GW's Strategic Campus and Facilities Master Plan and the 2021 Mount Vernon Campus Plan is to build upon and strengthen the foundation and vision for sustainability that GW has developed over the last decade through further refinement of performance targets and strategies.
 - Campus Buildings
 - Transportation
 - Stormwater Management
 - Green Space
 - Campus Community Behavior
 - Regulations and Other Considerations



Next Steps and Meetings

- September 8, 2021 – Review Draft Framework ([Hybrid Meeting](#))
- Incorporate Feedback from September 8th + Internal Review
- Distribute Second Draft including conditions for review prior to September 22, 2021
- September 22, 2021 – Review Second Draft
- Incorporate Feedback from September 22nd + Internal Review
- Distribute Full/Final Draft for Community Review October 2021



Important Online Resources

Mount Vernon Campus Plan

go.gwu.edu/MVCPlan2021

Newsletter signup

go.gwu.edu/mvcneighborssignup

Online Reporting Tool

go.gwu.edu/onlinepublicreport

Bicentennial

bicentennial.gwu.edu

MVC Community Feedback:

<https://neighborhood.gwu.edu/2021-mount-vernion-campus-plan>

GW COVID-19 Response & FAQs:

coronavirus.gwu.edu
coronavirus.gwu.edu/top-faqs

GW COVID-19 Dashboard:

coronavirus.gwu.edu/dashboard



GW Community Engagement Contact Information

Office of Government & Community Relations Staff

Kevin Days

Director of Community Relations

kdays@gwu.edu

Gabrielle Sosa

Assistant Director of Government
Relations

gabriellesosa@gwu.edu

Mount Vernon Contact

Greg Rheault

Assistant Dean, MVC

grheault@gwu.edu

Advisory Working Group

Brian Snyder

Director of Facilities Resources and
Planning

bsnyder7@gwu.edu



THE GEORGE
WASHINGTON
UNIVERSITY

WASHINGTON, DC

