
THE GEORGE
WASHINGTON
UNIVERSITY

WASHINGTON, DC

Neighborhood Working Group

2021 Mount Vernon Campus Planning

Updated Overview

November 4, 2021 at 4:00PM

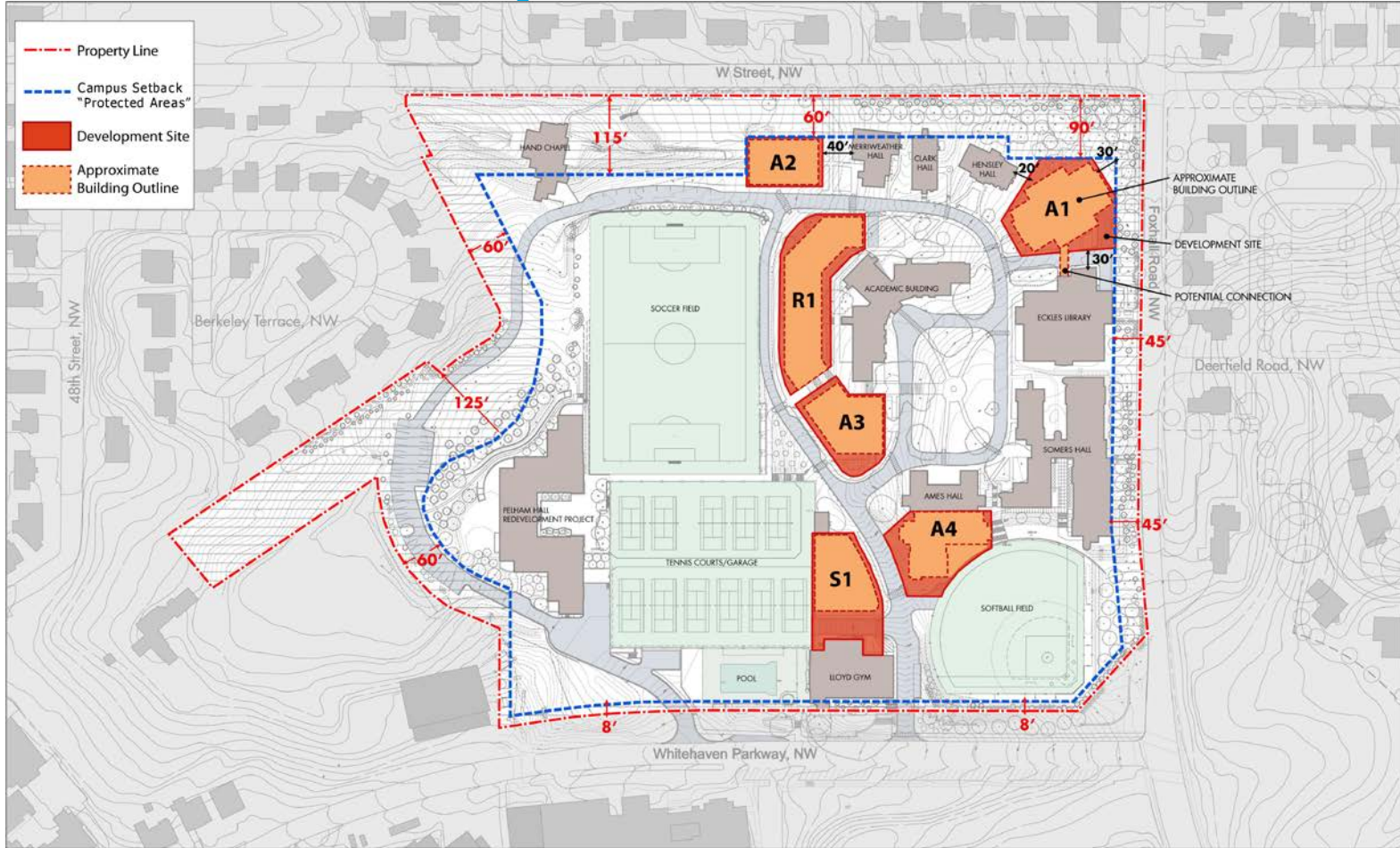


Agenda

- Overview of Updated Exhibits
- Important Online Resources
- GW Community Engagement Contact Information



2010 Development Plan



2021 Development Plan

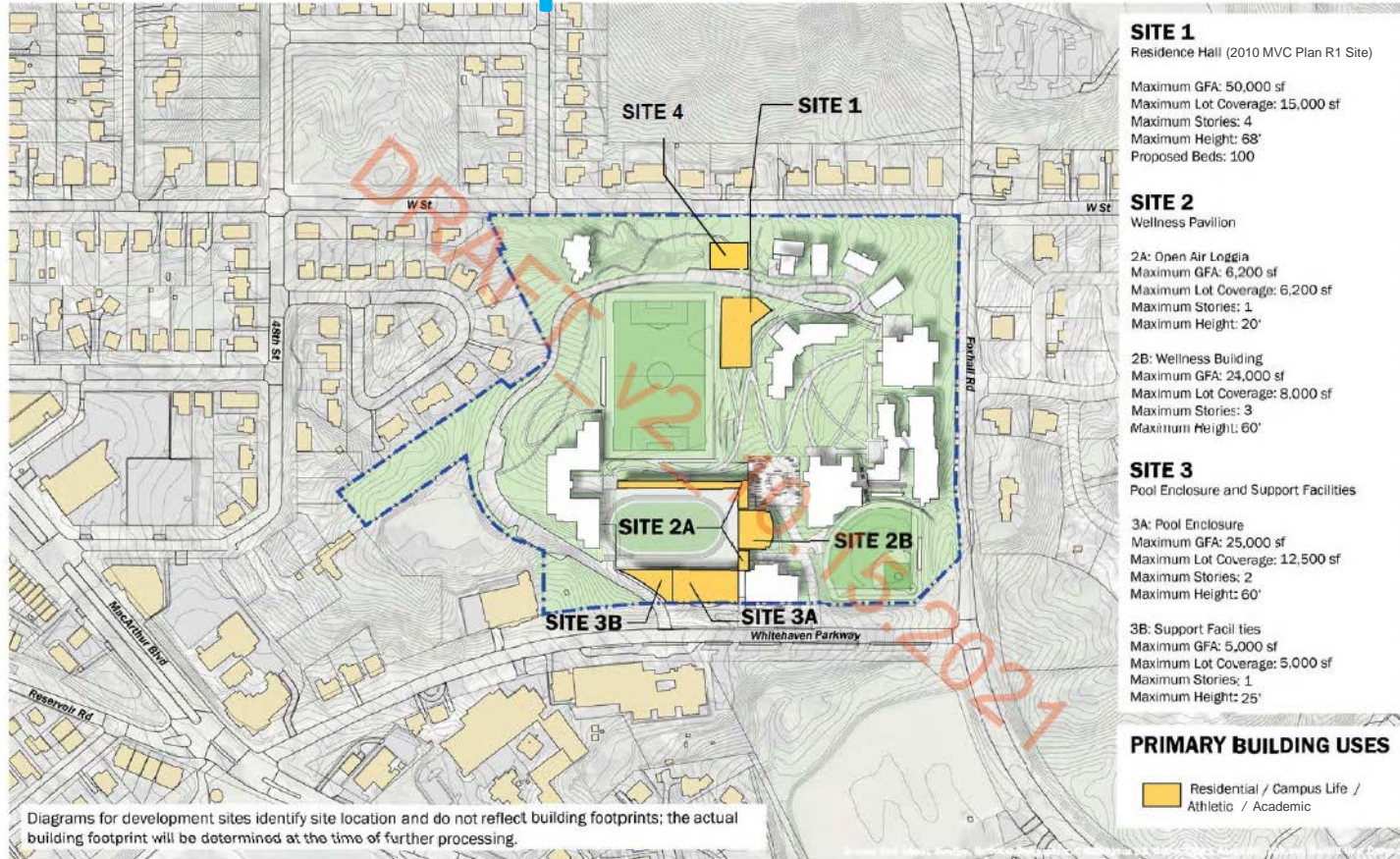
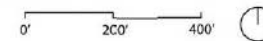


EXHIBIT H : PROPOSED DEVELOPMENT SITES



Athletic and Recreation Facilities

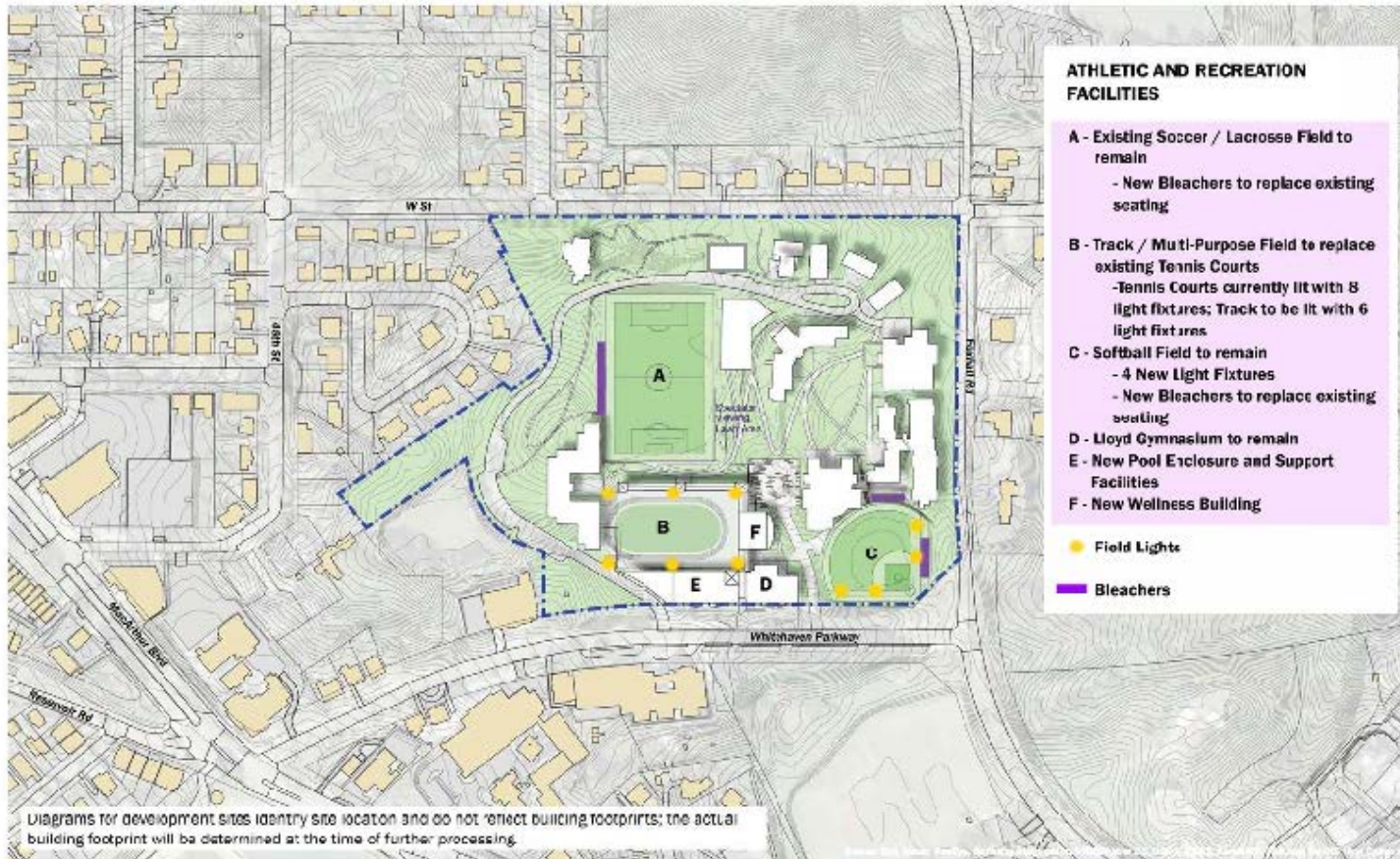
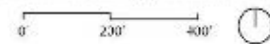


EXHIBIT K - PROPOSED ATHLETIC AND RECREATIONAL FACILITIES



Transportation and Parking (Existing)

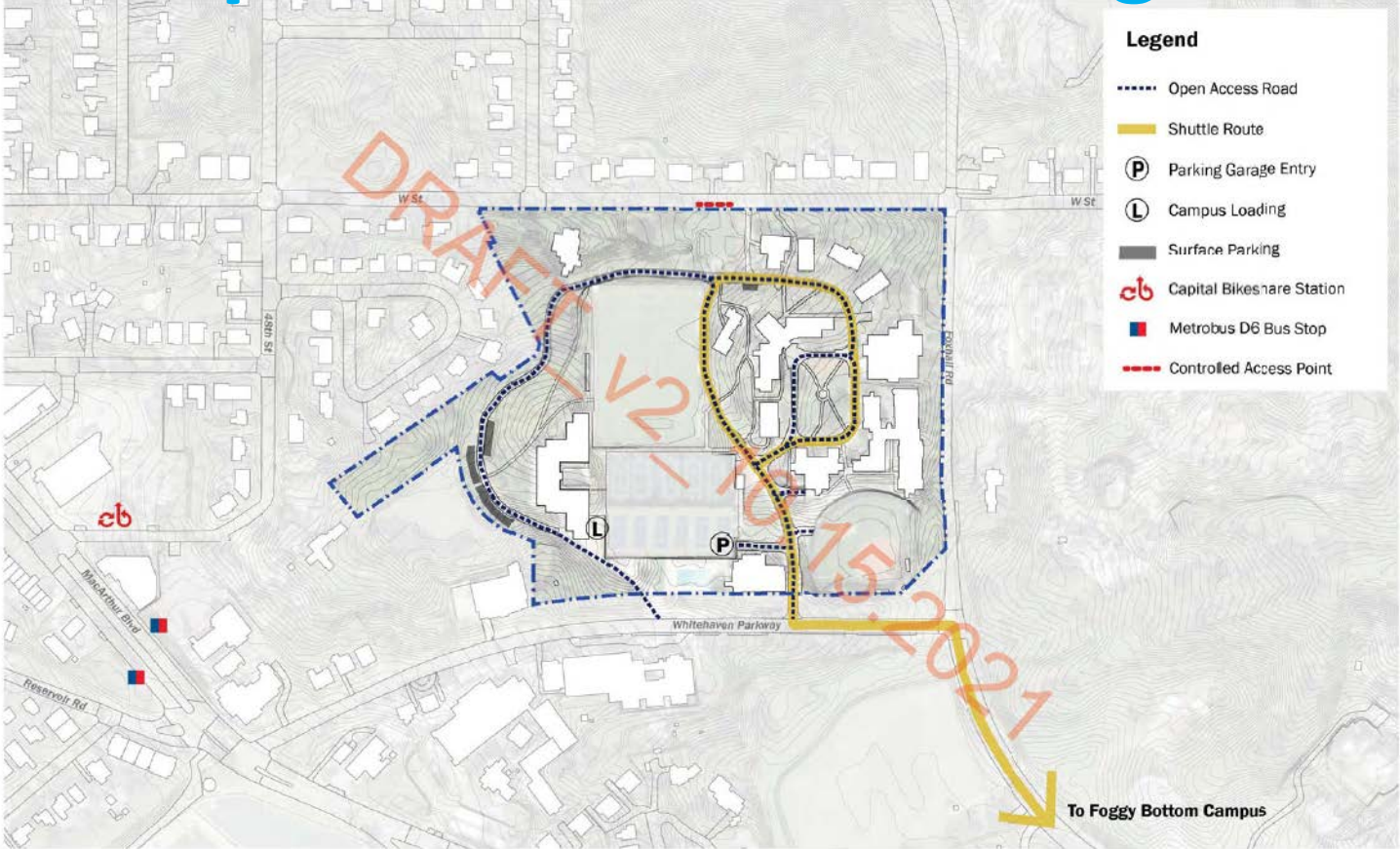
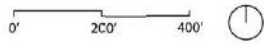


EXHIBIT W : EXISTING CAMPUS CIRCULATION, PARKING AND LOADING FACILITIES



THE GEORGE WASHINGTON UNIVERSITY WASHINGTON, DC

Transportation and Parking (Proposed)

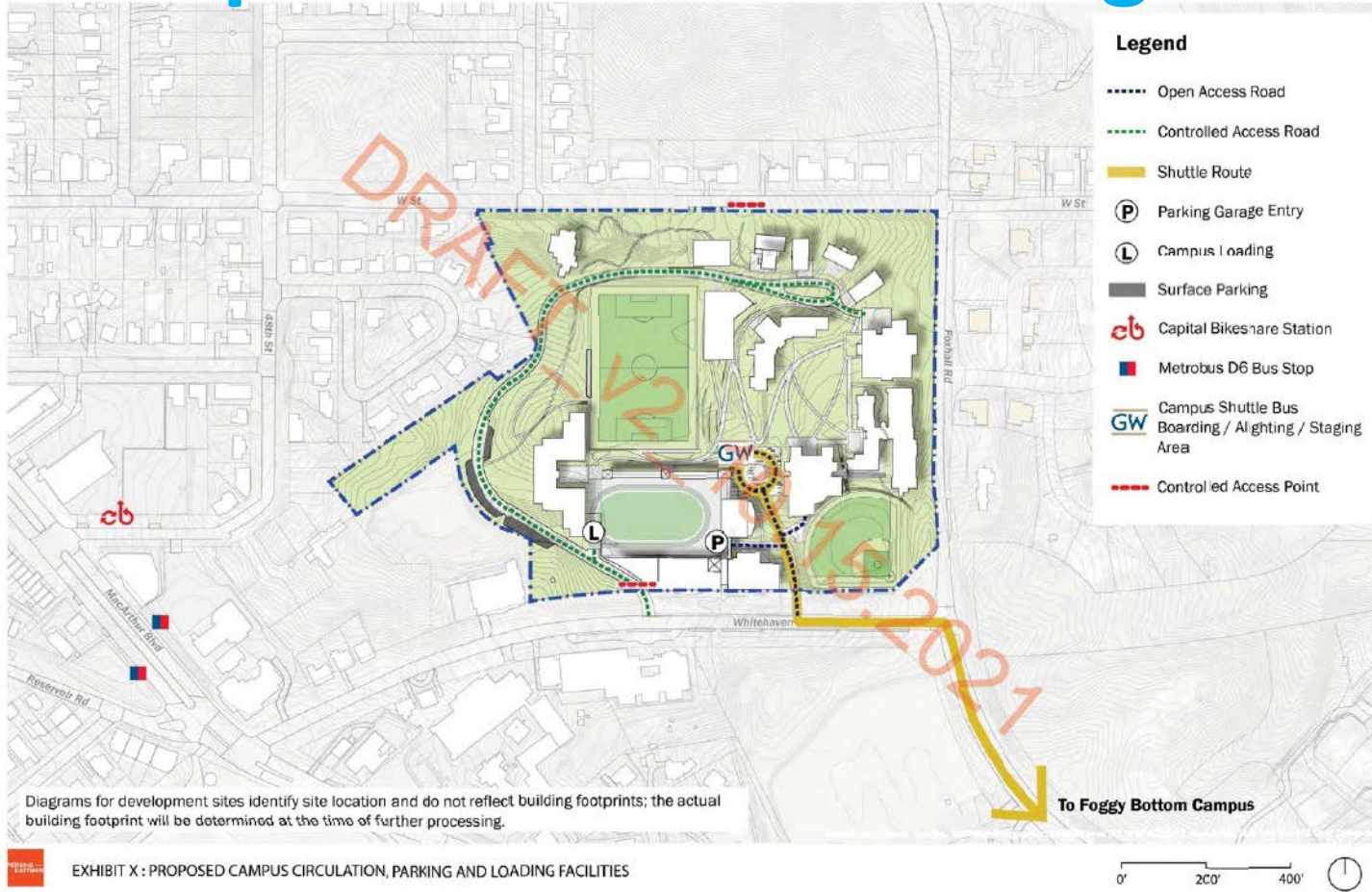


EXHIBIT X : PROPOSED CAMPUS CIRCULATION, PARKING AND LOADING FACILITIES



Important Online Resources

Mount Vernon Campus Plan

go.gwu.edu/MVCPlan2021

Newsletter signup

go.gwu.edu/mvcneighborssignup

Online Reporting Tool

go.gwu.edu/onlinepublicreport

Bicentennial

bicentennial.gwu.edu

MVC Community Feedback:

<https://neighborhood.gwu.edu/2021-mount-vernion-campus-plan>

GW COVID-19 Response & FAQs:

coronavirus.gwu.edu
coronavirus.gwu.edu/top-faqs

GW COVID-19 Dashboard:

coronavirus.gwu.edu/dashboard



GW Community Engagement Contact Information

Office of Government & Community Relations Staff

Kevin Days

Director of Community Relations
kdays@gwu.edu

Gabrielle Sosa

Assistant Director of Government
Relations
gabriellesosa@gwu.edu

Mount Vernon Contact

Greg Rheault

Assistant Dean, MVC
grheault@gwu.edu

Advisory Working Group

Brian Snyder

Director of Facilities Resources and
Planning
bsnyder7@gwu.edu



THE GEORGE
WASHINGTON
UNIVERSITY

WASHINGTON, DC

