

**The George Washington University
Square 103 - Phase 1 Design
Garage Base Building**

**REVISED FOGGY BOTTOM CAMPUS PLAN PUD
SECOND STAGE APPROVAL**

MAY 11, 2012

OWNER / DEVELOPER:

ARCHITECT:

LAND USE COUNSEL:

CIVIL ENGINEER:

LANDSCAPE ARCHITECT:

THE GEORGE WASHINGTON UNIVERSITY

PERKINS + WILL; SHALOM BARANES ASSOCIATES

GOULSTON & STORRS

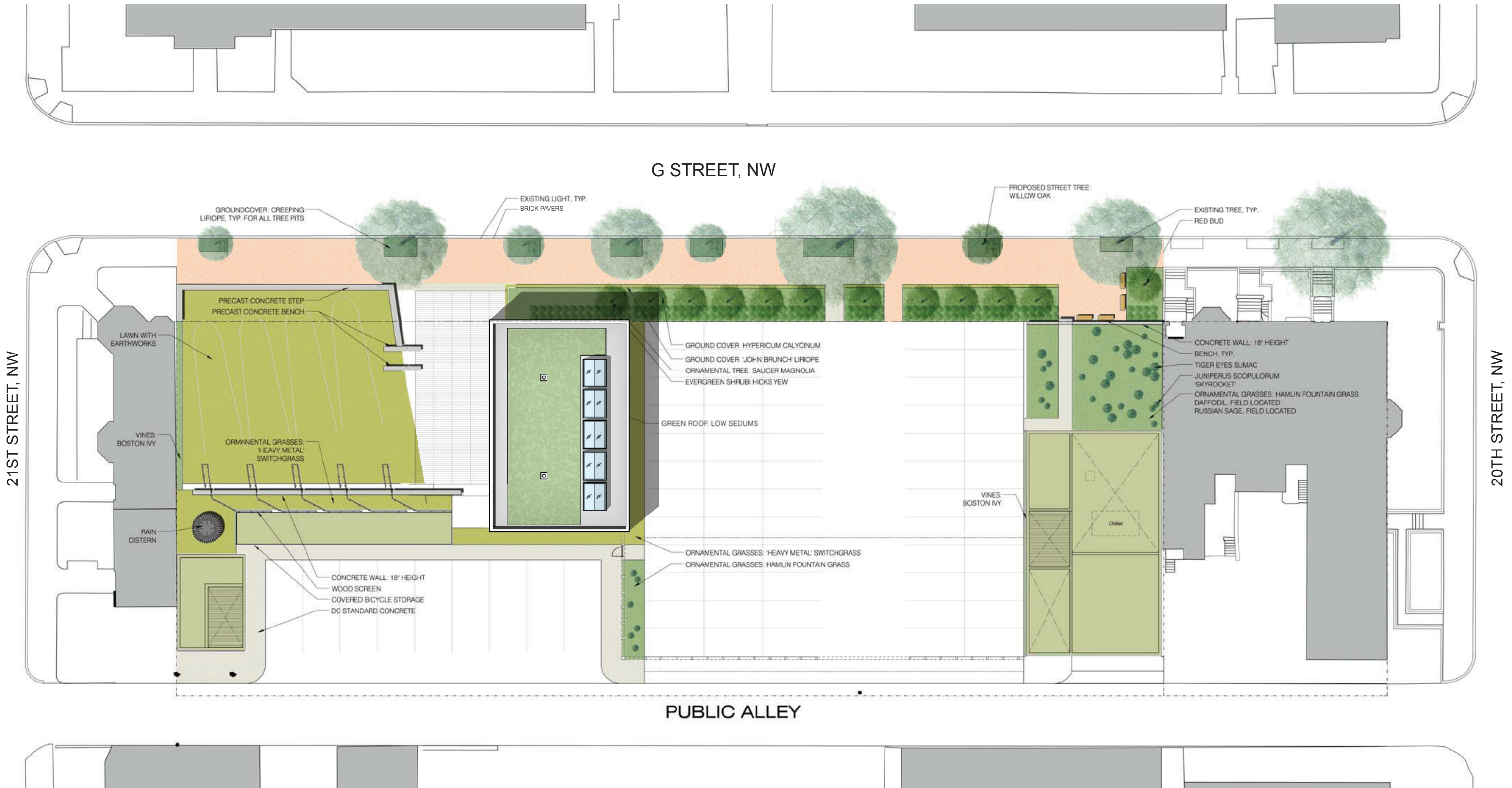
WILES MENSCH CORPORATION-DC

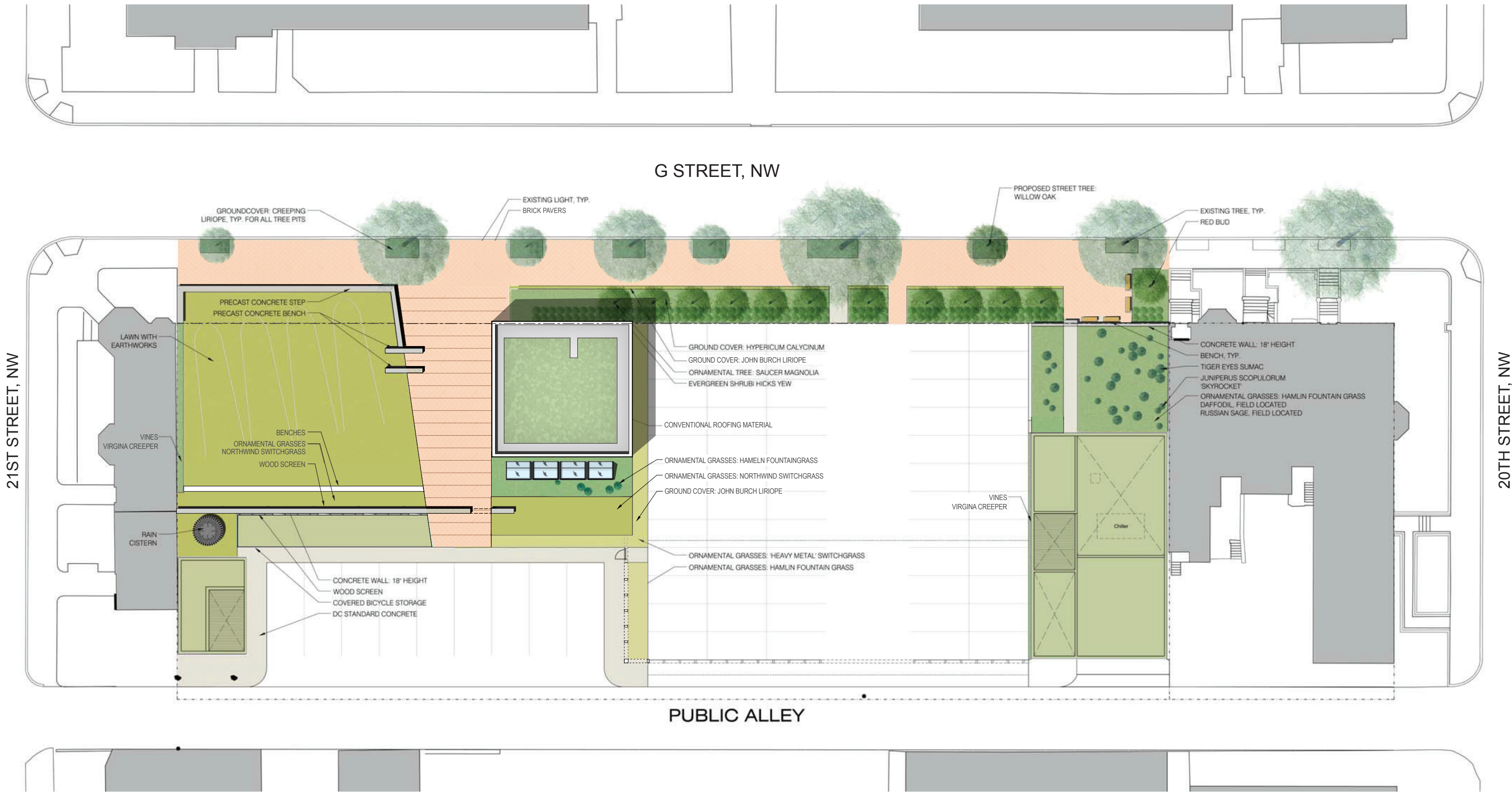
OCULUS



DRAWING INDEX

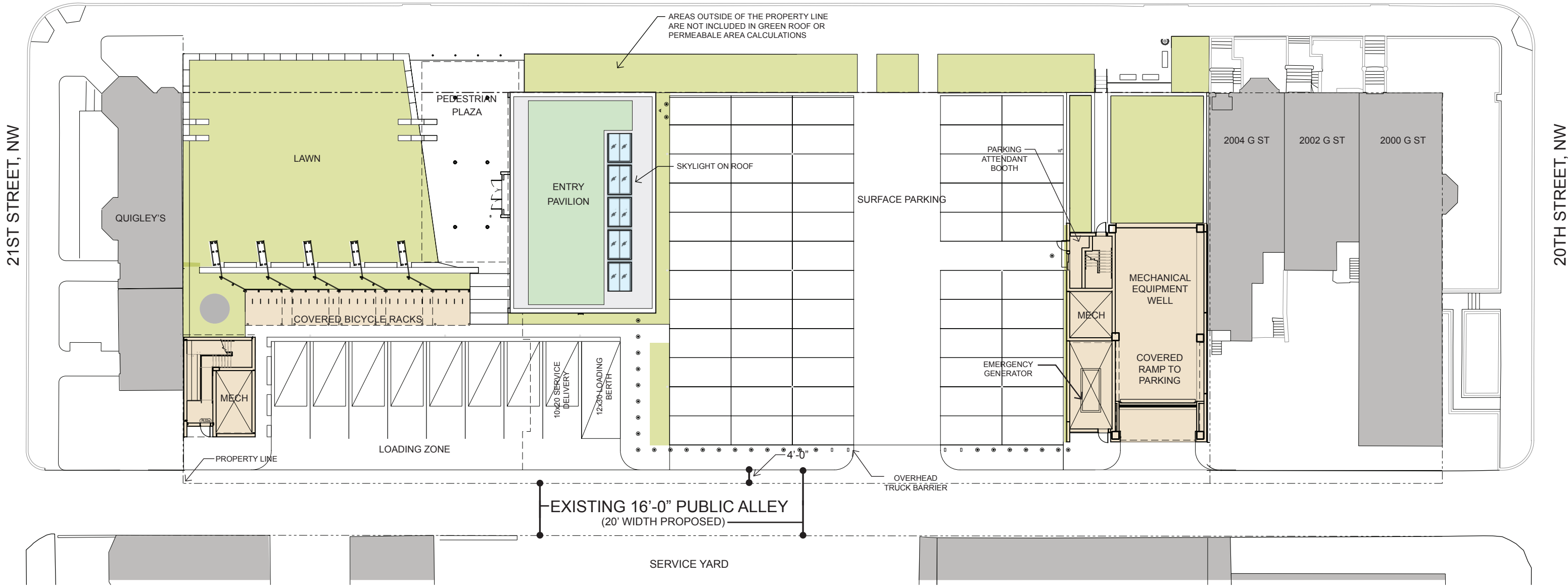
SHEET	TITLE
—	COVER SHEET
L1	PREVIOUSLY PROPOSED LANDSCAPE PLAN
L1.R	REVISED LANDSCAPE PLAN
A1	PREVIOUSLY PROPOSED PLAZA LEVEL PLAN
A1.R	REVISED PLAZA LEVEL PLAN
A7	PREVIOUSLY PROPOSED ENTRY PAVILION ELEVATIONS
A7.R	REVISED ENTRY PAVILION ELEVATIONS
A9	PROPOSED BUILDING SECTION A-A
A9.R	REVISED BUILDING SECTION A-A
A12	PREVIOUSLY PROPOSED PERSPECTIVE RENDERINGS
A12.R	REVISED PERSPECTIVE RENDERINGS





AS ALL SURFACES AT GRADE AND ABOVE ARE THE ROOF TO THE GARAGE STRUCTURE, THE ENTIRE ABOVE GRADE LANDSCAPED AREAS ARE PART OF THE TOTAL GREEN ROOF.

G STREET, NW



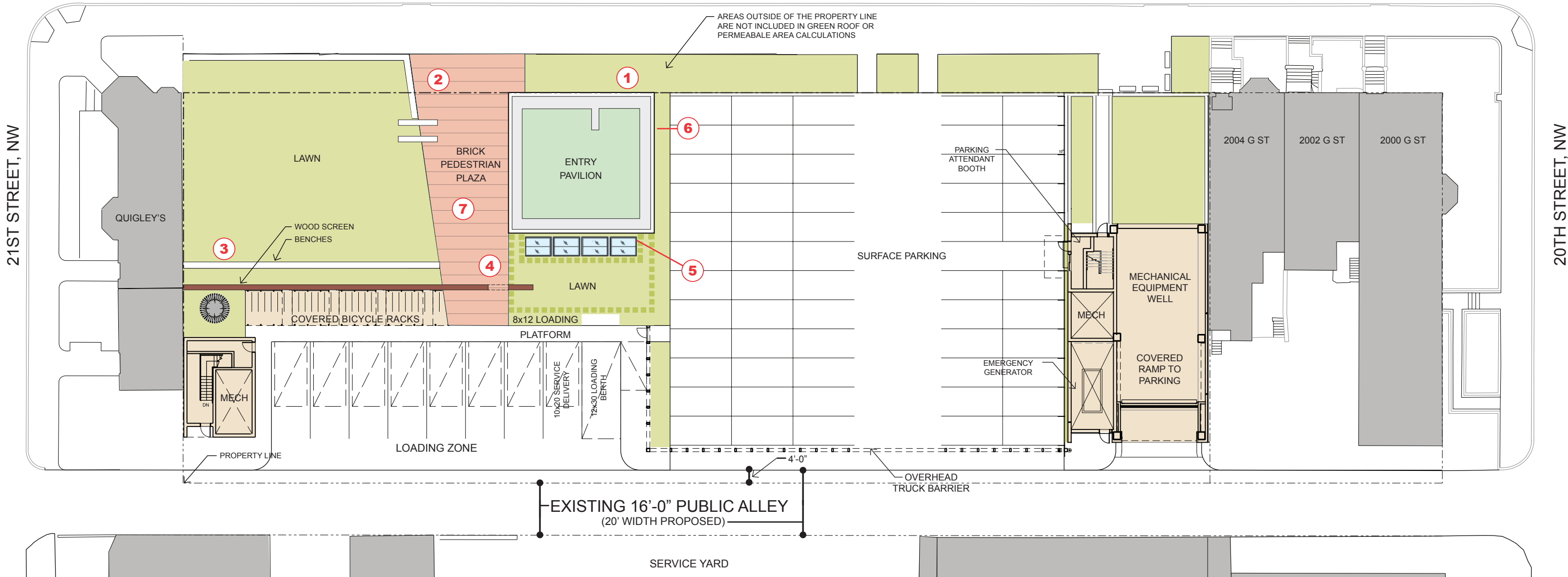
GREEN AREAS (SF)	
PAVILION ROOF PLANTING	1,278
GROUND PLANE LANDSCAPE & PERMEABLE PAVING	7,892
% OF TOT. GROUND PLANE LANDSCAPE & PERMEABLE PAVING	24%



PLAZA LEVEL PLAN

AS ALL SURFACES AT GRADE AND ABOVE ARE THE ROOF TO THE GARAGE STRUCTURE, THE ENTIRE ABOVE GRADE LANDSCAPED AREAS ARE PART OF THE TOTAL GREEN ROOF.

G STREET, NW



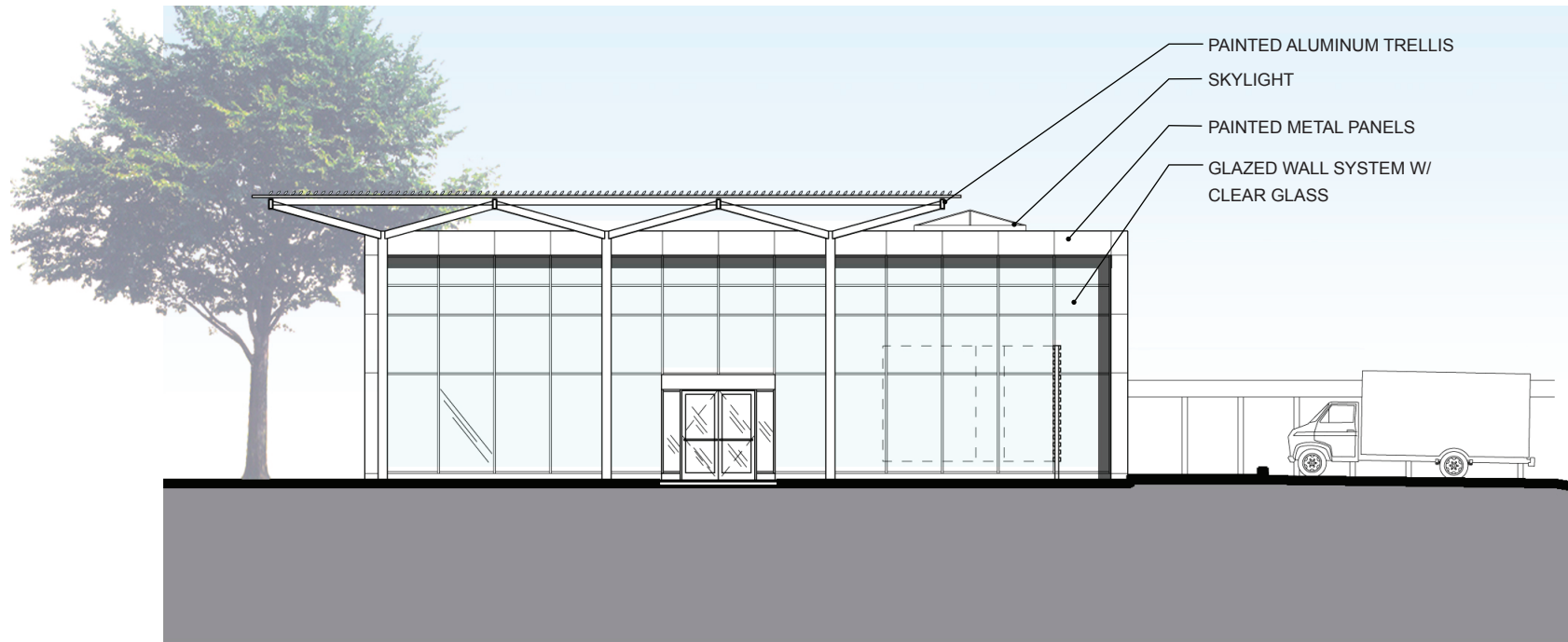
- KEYPLAN**
- 1. Reduce Pavilion length from 68'-0" to 43'-6"
 - 2. Change Pedestrian Plaza paving from granite to brick
 - 3. Simplify wood screen configuration
 - 4. Extend wood screen to East
 - 5. Skylights relocated to new lawn at grade
 - 6. Increase solid areas of facade
 - 7. Remove trellis

GREEN AREAS (SF)	
REVISED PAVILION ROOF PLANTING	1,200
REVISED GROUND PLANE LANDSCAPE & PERMEABLE PAVING	8,627
REVISED % OF TOT. GROUND PLANE LANDSCAPE & PERMEABLE PAVING	26%

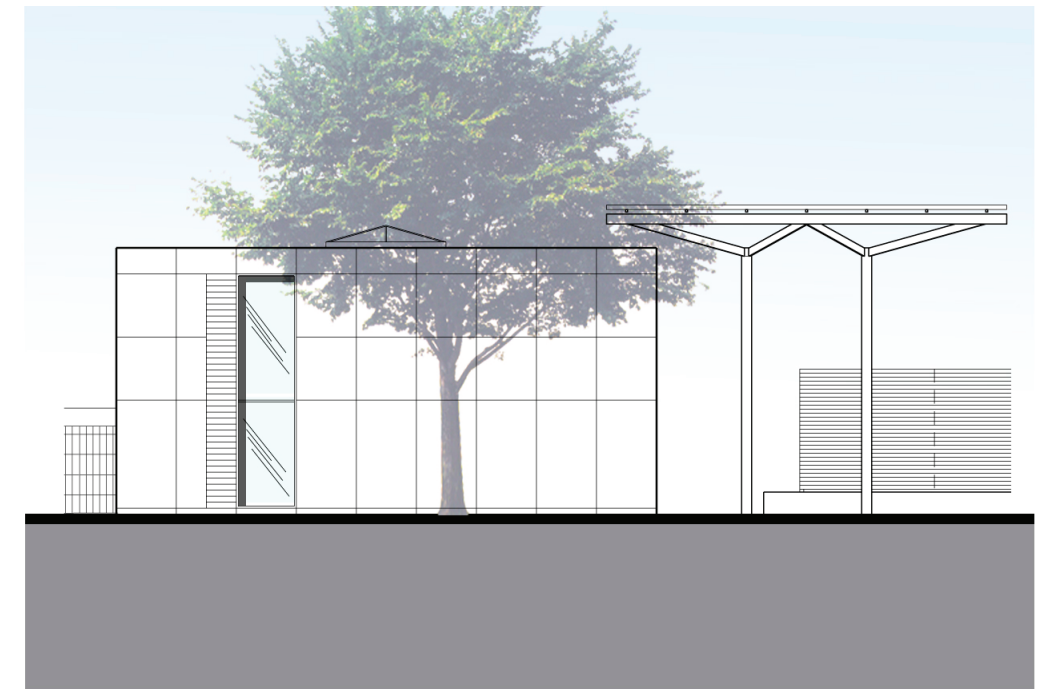


PLAZA LEVEL PLAN

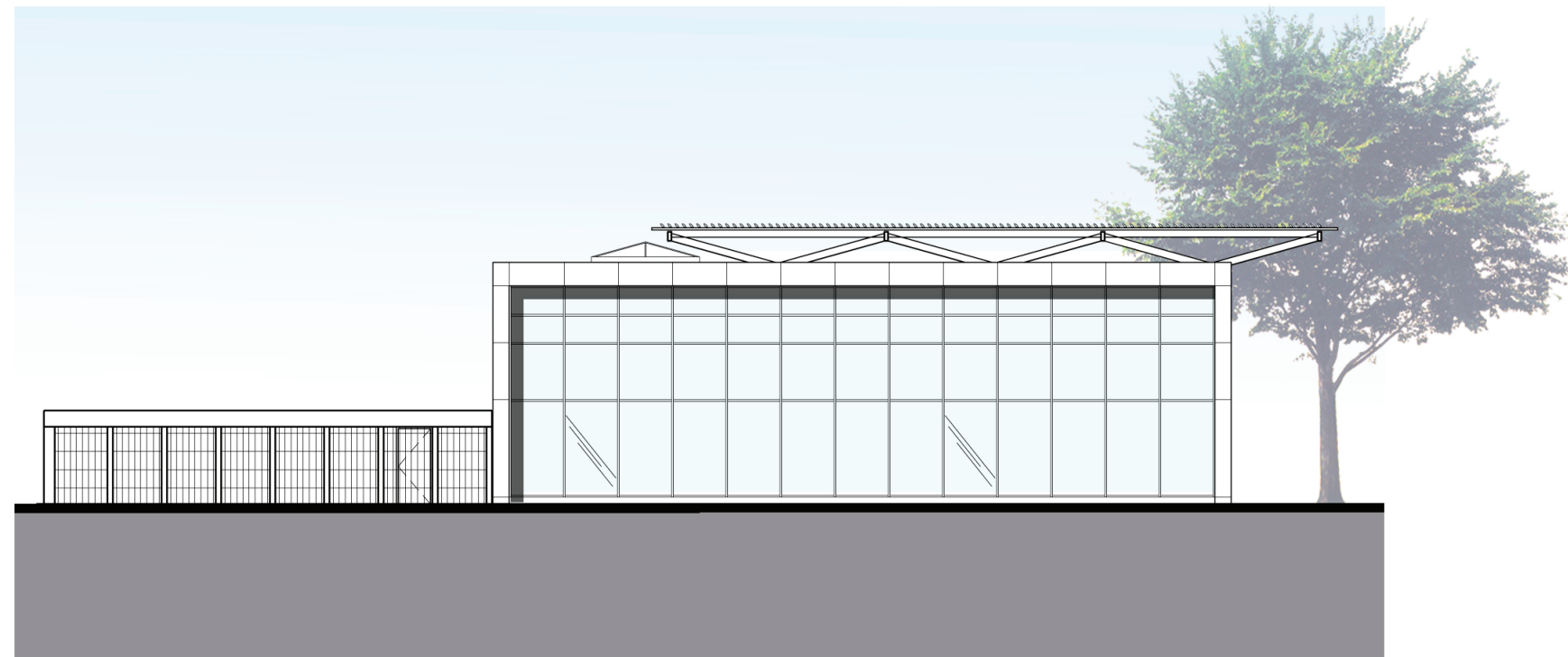
A1.R



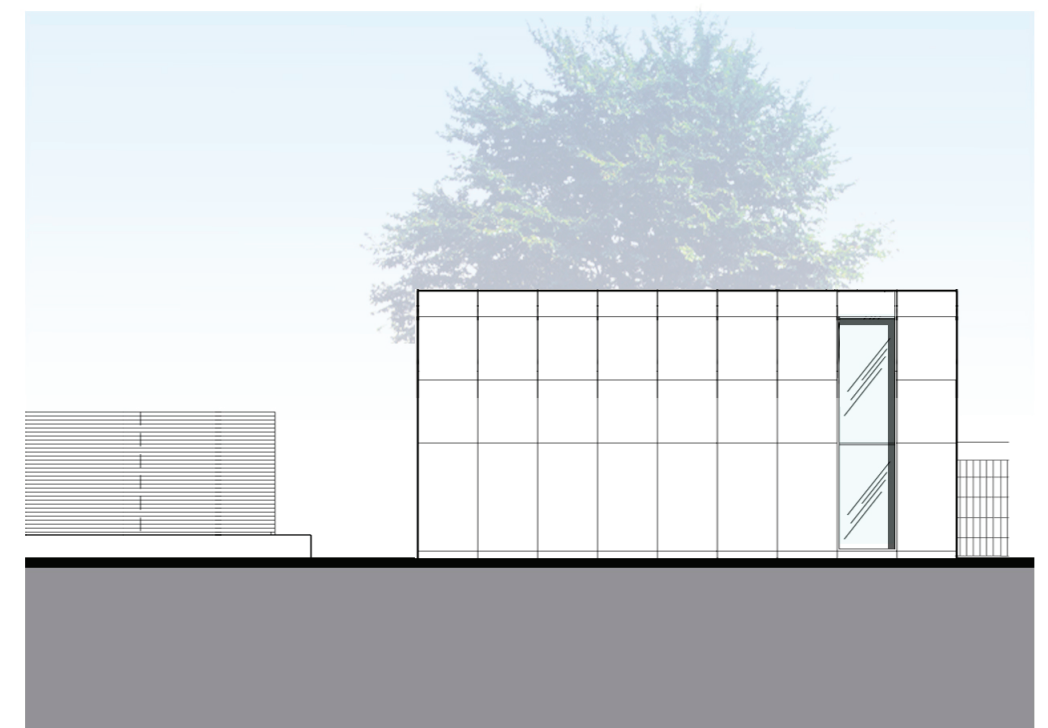
ELEVATION 3.0 ENTRY PAVILION - WEST ELEVATION



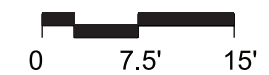
ELEVATION 4.0 ENTRY PAVILION - NORTH ELEVATION

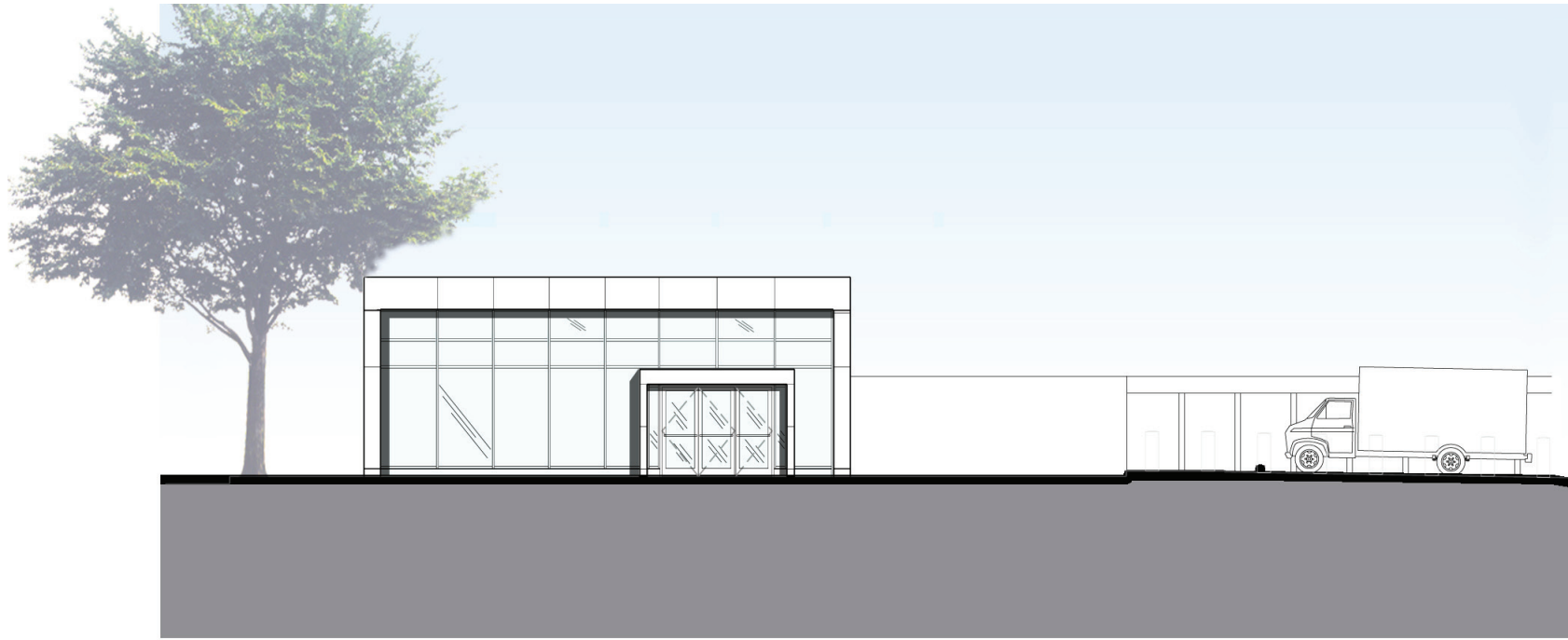


ELEVATION 5.0 ENTRY PAVILION - EAST ELEVATION

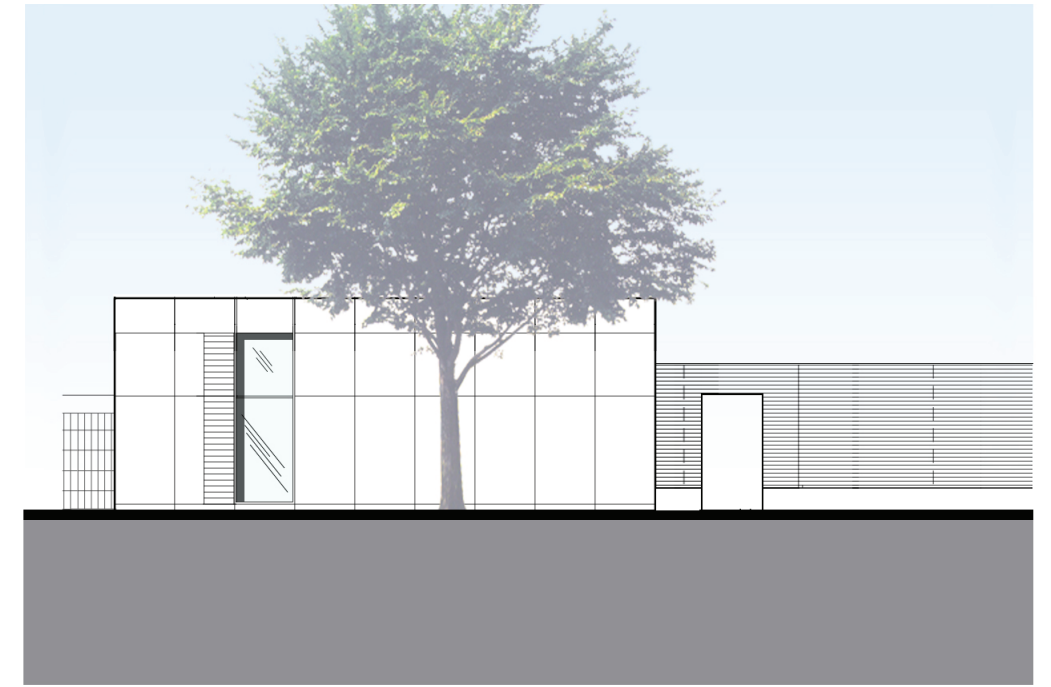


ELEVATION 6.0 ENTRY PAVILION - SOUTH ELEVATION

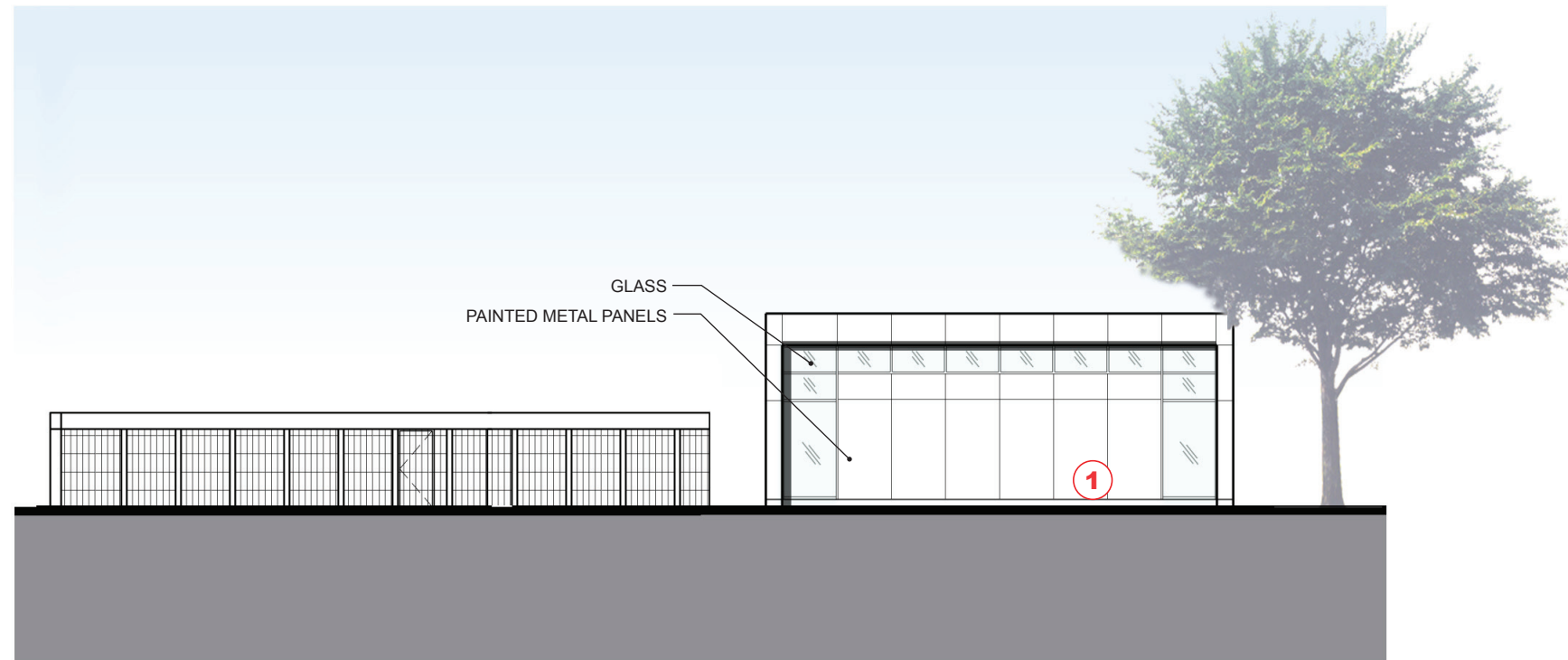




ELEVATION 3.0 ENTRY PAVILION - WEST ELEVATION



ELEVATION 4.0 ENTRY PAVILION - NORTH ELEVATION

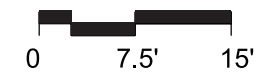


ELEVATION 5.0 ENTRY PAVILION - EAST ELEVATION



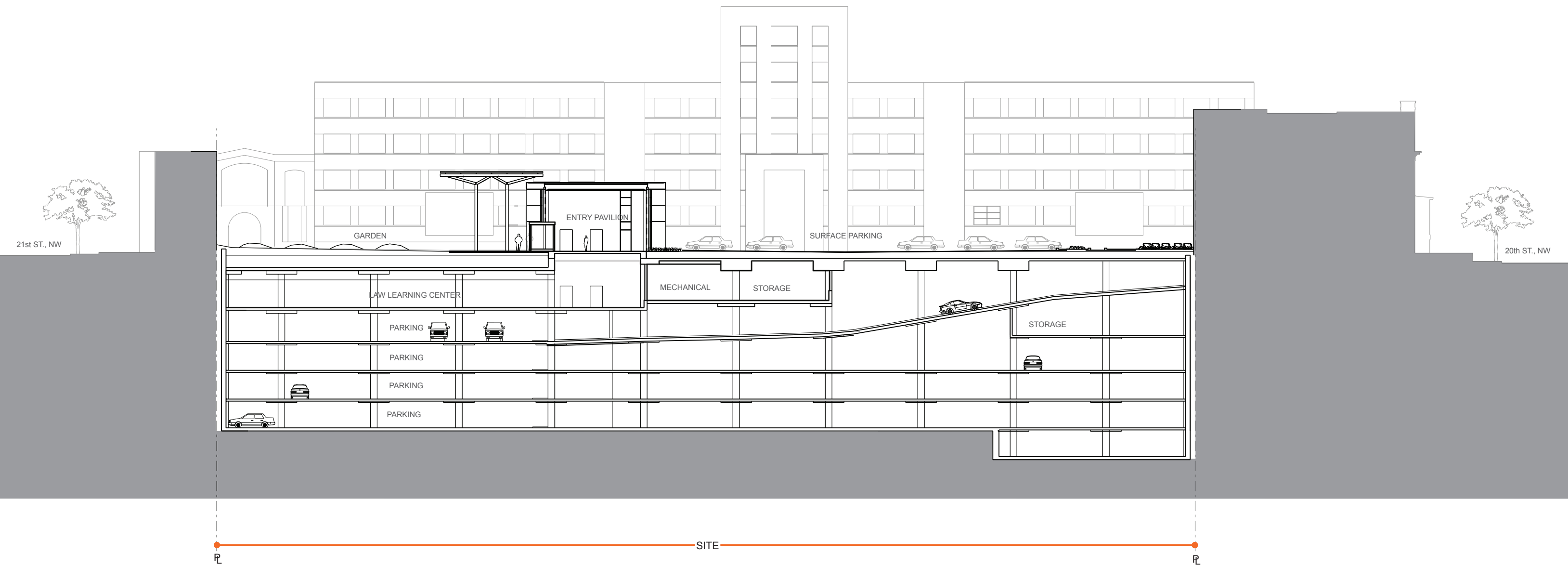
ELEVATION 6.0 ENTRY PAVILION - SOUTH ELEVATION

- KEYPLAN**
- 1. Increase solid areas of facade
 - 2. Simplify wood screen configuration
 - 3. Extend wood screen to the East

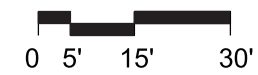


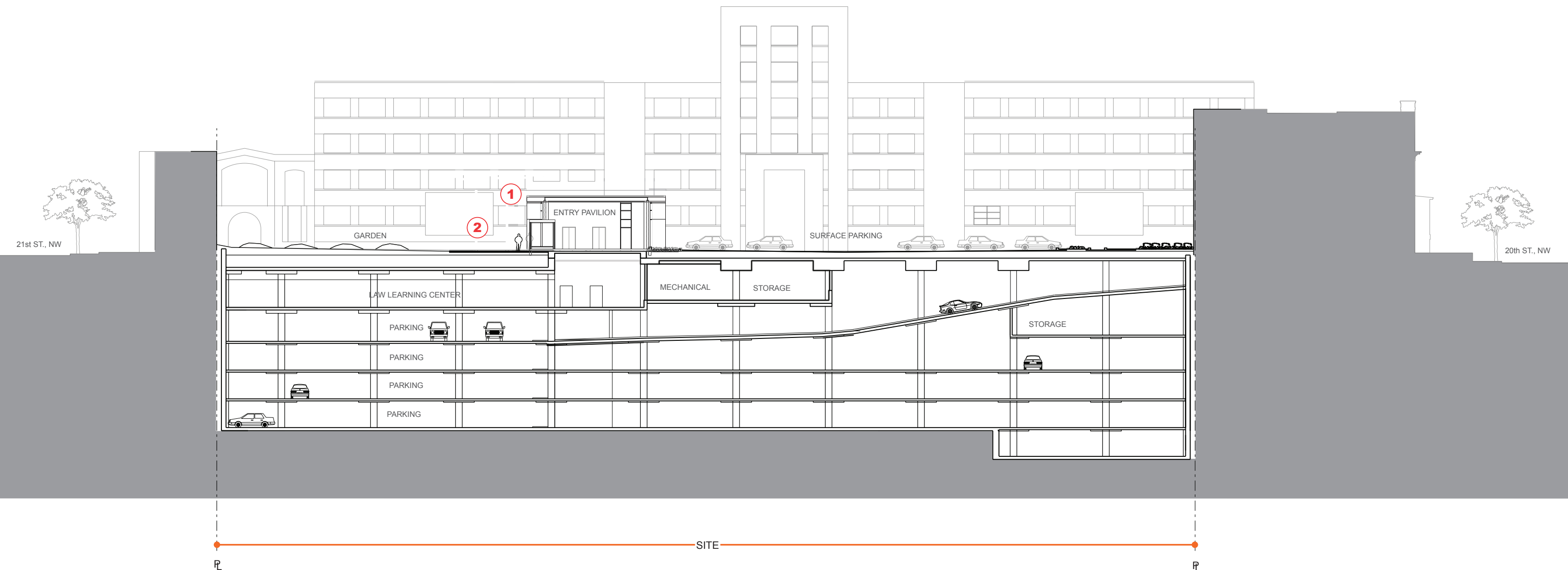
ENTRY PAVILION ELEVATIONS

A7.R



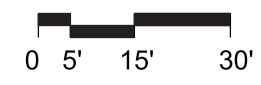
EAST WEST SECTION LOOKING NORTH





EAST WEST SECTION LOOKING NORTH

KEYPLAN
 1. Reduce Pavilion height from 23'-0" to 18'-3"
 2. Remove trellis



BUILDING SECTION

A9.R



GARDEN AND ENTRY PAVILION FROM G STREET - LOOKING SOUTH



GARDEN AND ENTRY PAVILION FROM G STREET - LOOKING SOUTH