



EAST VIEW



NORTH VIEW



WEST VIEW



SOUTH VIEW



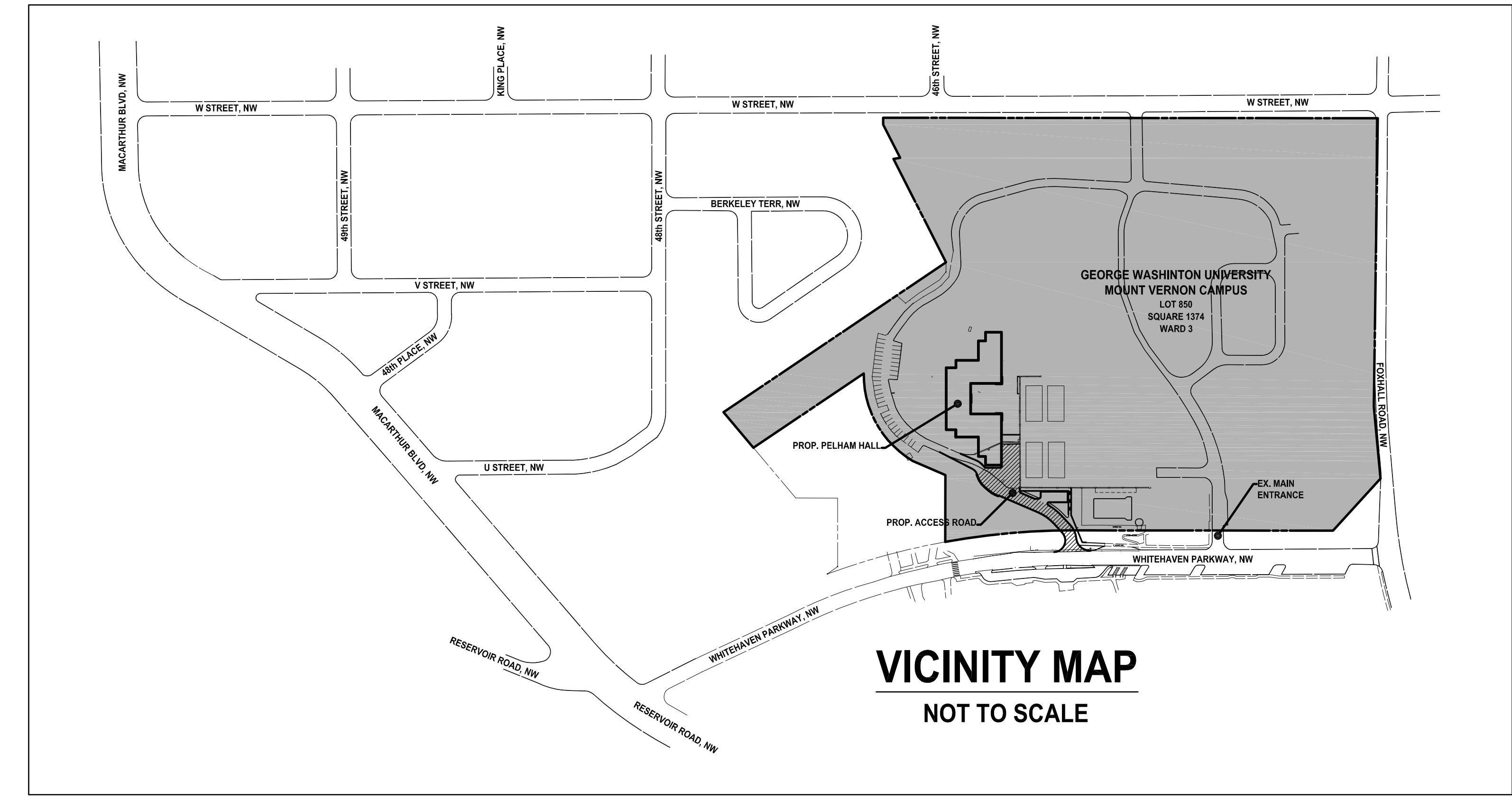
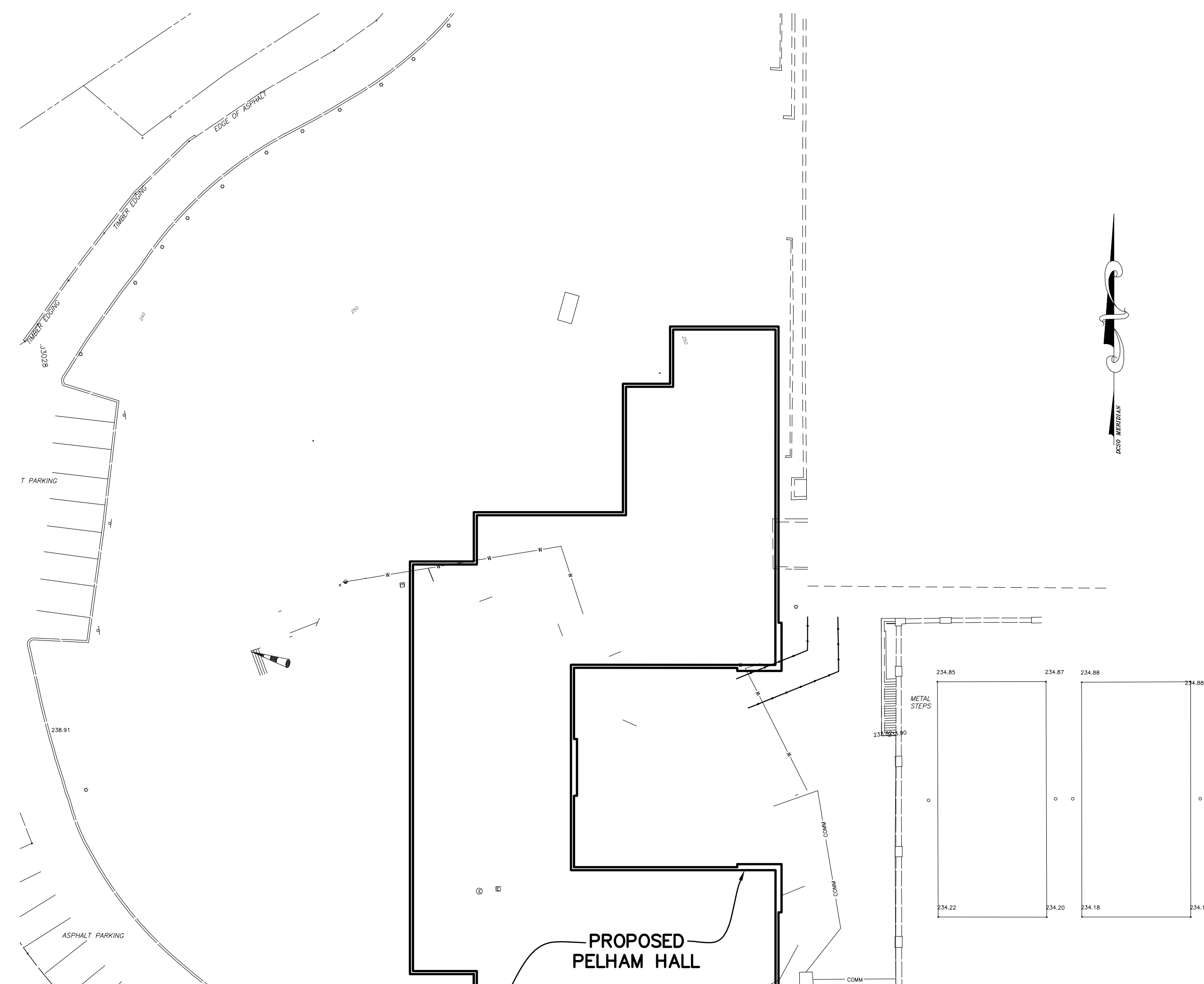
VIEW FROM BERKELEY TERRACE



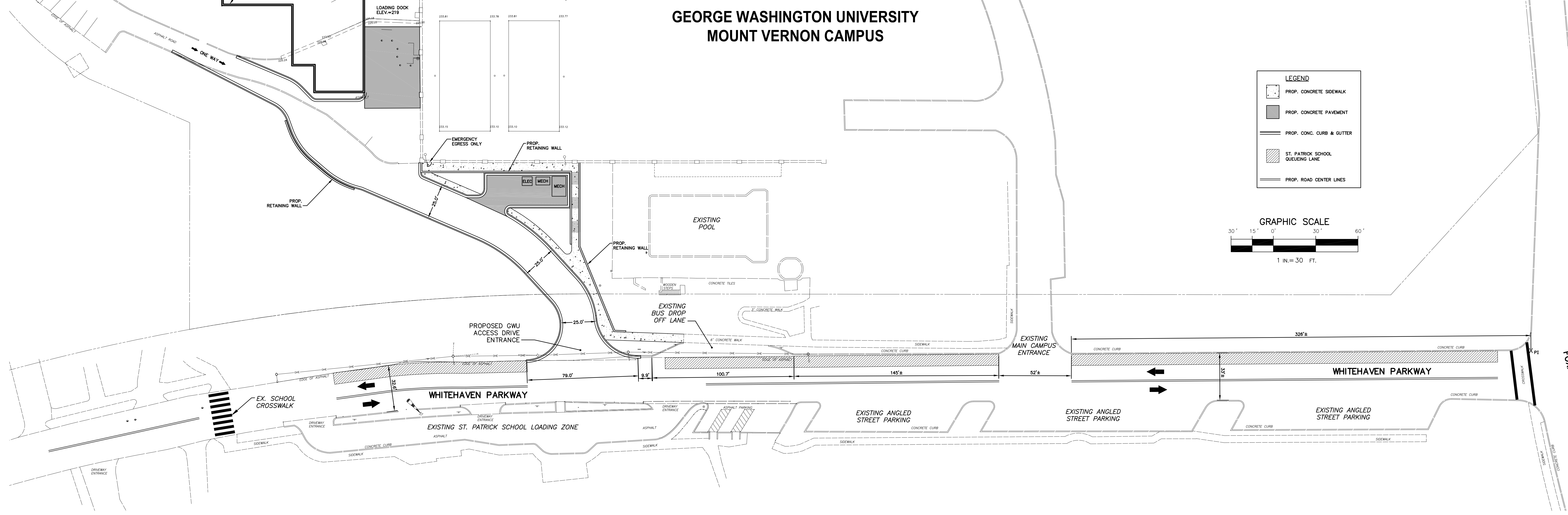
VIEW FROM CAMPUS

EXISTING CONDITIONS

**The George Washington University
Pelham Replacement Project**



**GEORGE WASHINGTON UNIVERSITY
MOUNT VERNON CAMPUS**



LEGEND

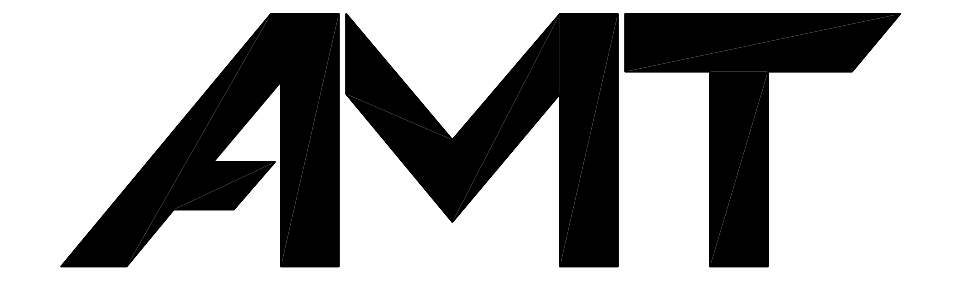
- PROP. CONCRETE SIDEWALK
- PROP. CONCRETE PAVEMENT
- PROP. CONC. CURB & GUTTER
- ST. PATRICK SCHOOL QUEUING LANE
- PROP. ROAD CENTER LINES

GRAPHIC SCALE

30' 15' 0' 30' 60'

1 IN. = 30 FT.

CONSULTANTS:



A. MORTON THOMAS AND ASSOCIATES, INC.
CONSULTING ENGINEERS
10 G STREET N.E., SUITE 430, WASHINGTON, DC 20002
(202) 289-4545 FAX: (202) 289-5051
EMAIL: AMT1@AMTENGINEERING.COM

KEY PLAN:

NO.	REVISION/SUBMISSION	DATE

**GEORGE WASHINGTON
UNIVERSITY
MOUNT VERNON CAMPUS**

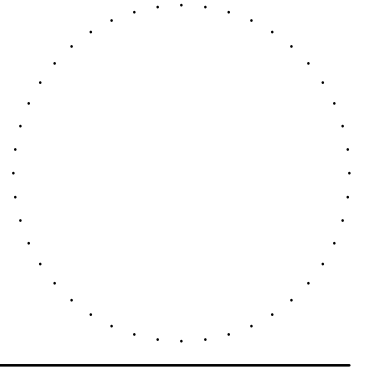
Access Road
Washington, DC

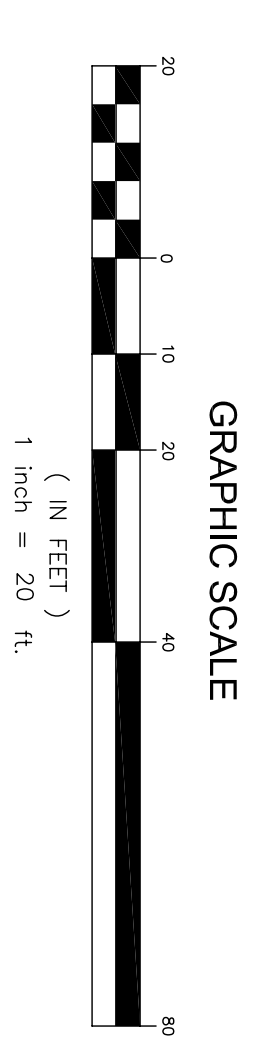
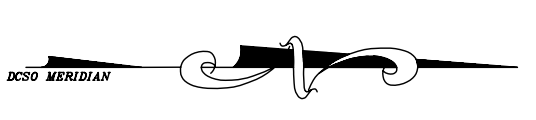
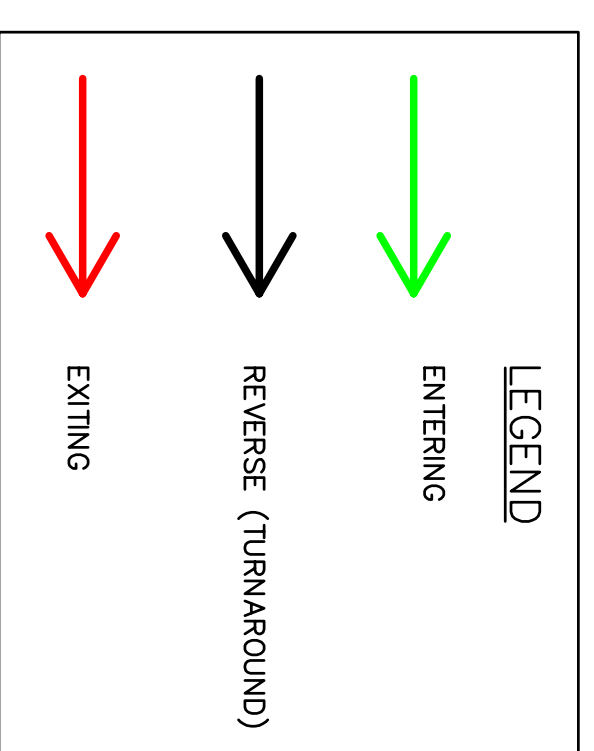
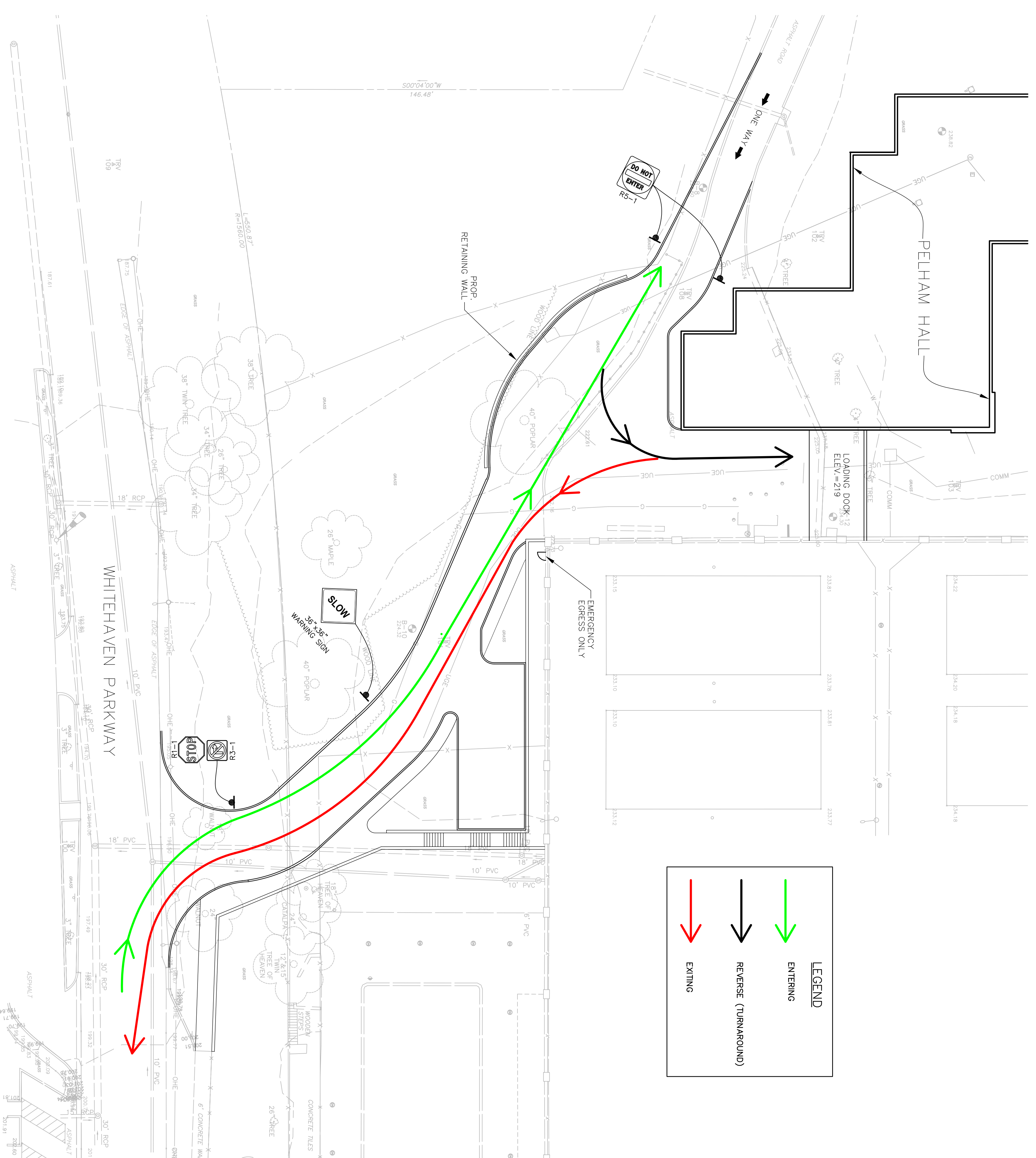
DATE: 05.18.2007
SCALE: 1"=30'
EVP PROJECT NO.: 2005013.02
DESIGNED BY: BCJ
DRAWN BY: BCJ
CHECKED BY:

**ACCESS ROAD
LOCATION PLAN**

Einbom Yaffee Prescott
Architecture & Engineering, P.C.
1000 Potomac Street, NW
Washington, D.C. 20007
Telephone: 202.471.5000
Fax: 202.471.5050

eypac.com





CONSULTANTS:

EYP/

AMT

A. MORTON THOMAS AND ASSOCIATES, INC.
CONSULTING ENGINEERS
10 C STREET N.E., SUITE 430, WASHINGTON, DC 20002
(202) 299-4545 FAX (202) 299-5051
EMAIL: AMTI@AMTENGINEERING.COM

KEY PLAN:

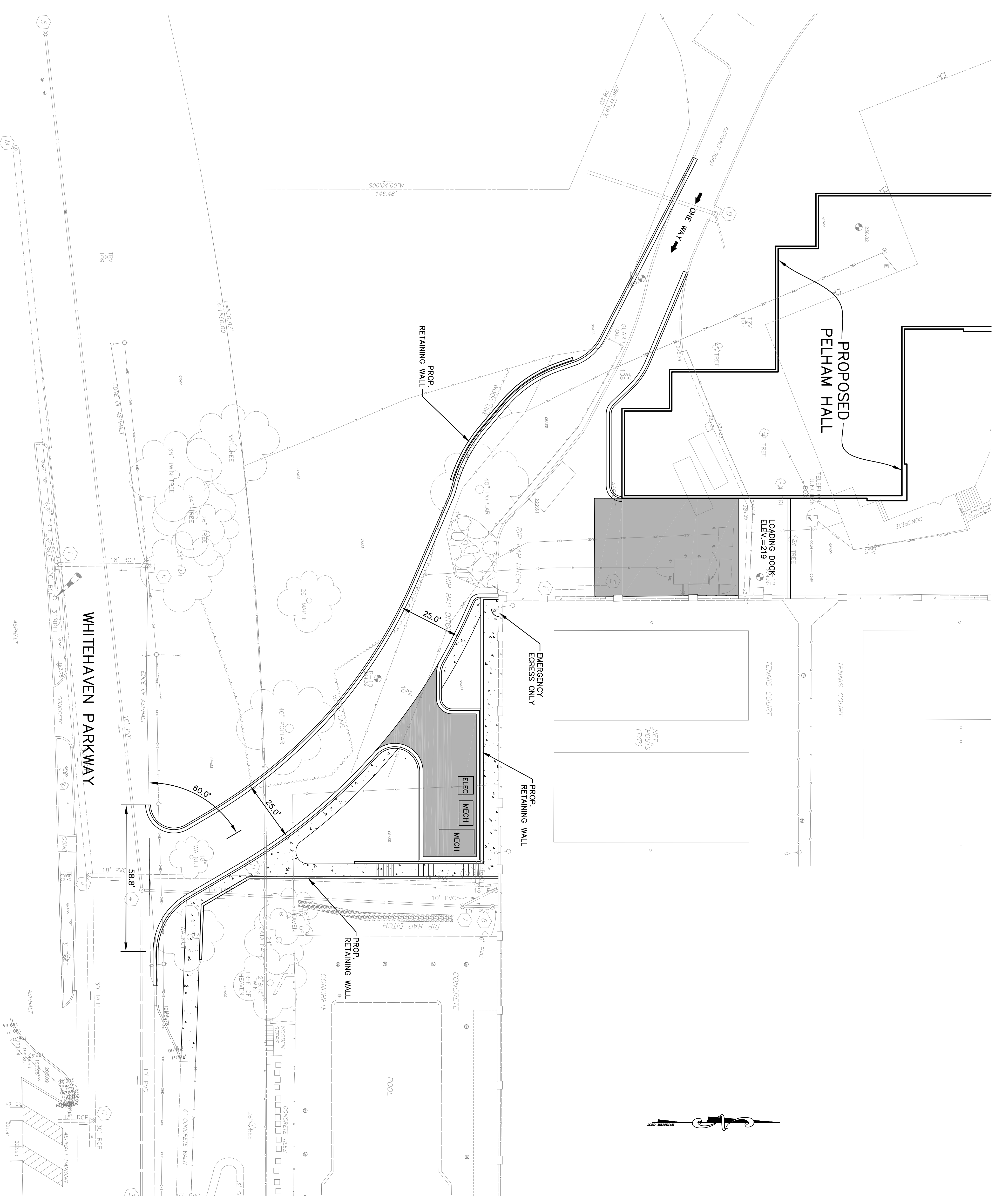
NO.	REVISION/SUBMISSION	DATE

GEORGE WASHINGTON UNIVERSITY
MOUNT VERNON CAMPUS

Access Road
Washington, DC

DATE: 05-18-2007
SCALE: 1"=20'
EYP PROJECT NO.: 2005013.02
DESIGNED BY: BCI
DRAWN BY: BCI
CHECKED BY:

TRUCK TURNAROUND MOVEMENT & SIGNAGE



CONSULTANTS:

EYP/

AMT

A. MORTON THOMAS AND ASSOCIATES, INC.
 CONSULTING ENGINEERS
 10 C STREET N.E., SUITE 430, WASHINGTON, DC 20002
 (202) 299-4545 FAX (202) 299-5051
 EMAIL: AMT@AMTENGINEERING.COM

KEY PLAN:

NO.	REVISION/SUBMISSION	DATE

GEORGE WASHINGTON UNIVERSITY
MOUNT VERNON CAMPUS
 Access Road
 Washington, DC

DATE: 05.18.2007
 SCALE: 1"=20'
 EYP PROJECT NO. 2005013.02
 DESIGNED BY: BCI
 DRAWN BY: BCI
 CHECKED BY: BCI

ALTERNATE ROAD ALIGNMENT PLAN

C2.2

Barbara Yaffe Partner
 Architecture & Engineering, P.C.
 1000 Potomac Street, NW
 Washington, D.C. 20007
 Tel: 202.471.5900
 Fax: 202.471.5909
 eyp.com

© 2005 Barbara Yaffe Partner, AIA