



# THE GEORGE WASHINGTON UNIVERSITY MOUNT VERNON CAMPUS PELHAM REPLACEMENT PROJECT ZONING APPLICATION SUBMISSION JUNE 18, 2007

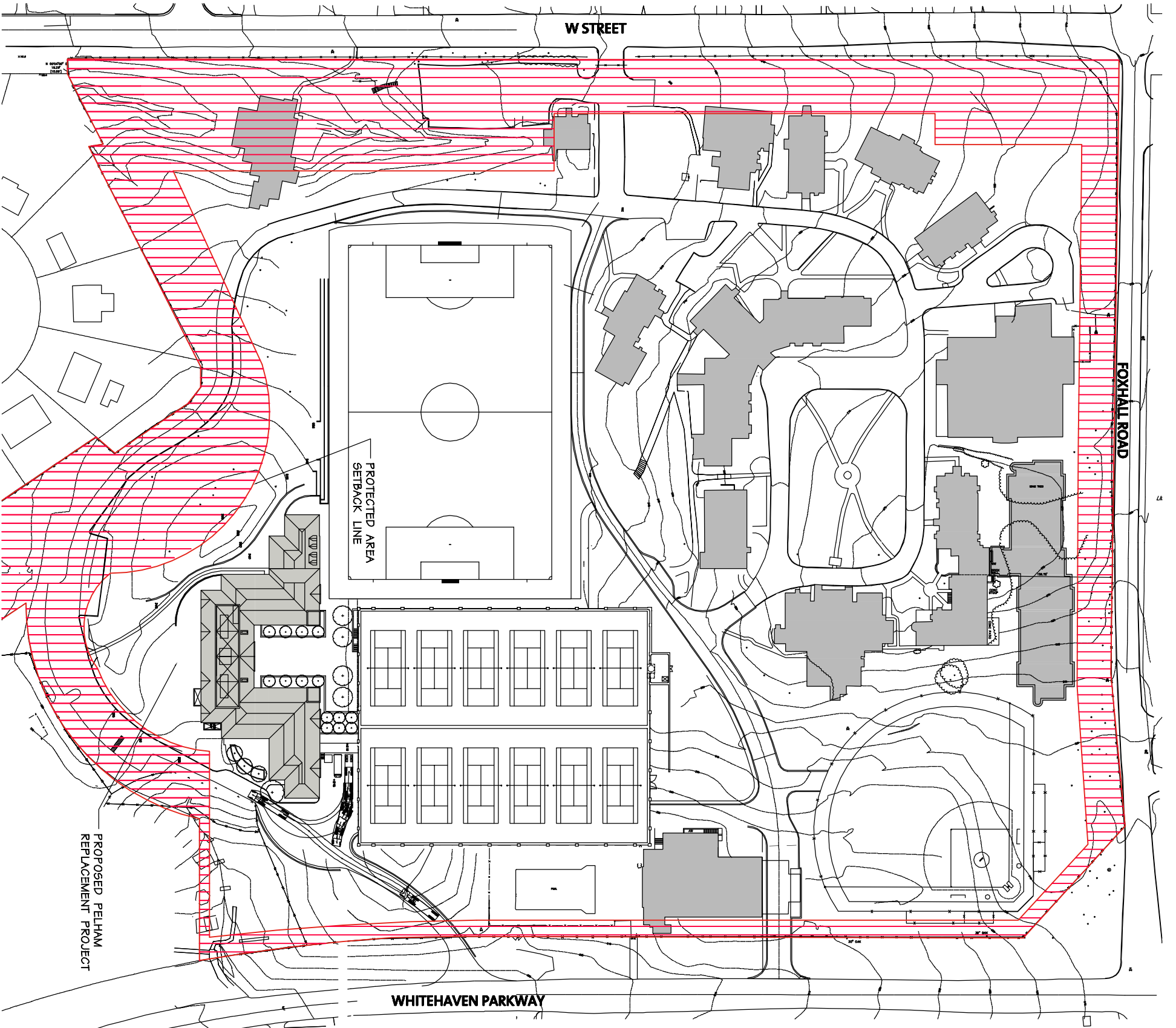
**DRAWINGS:**




- 1 SITE PLAN
- 2 LANDSCAPE PLAN
- 3 BASEMENT 2 PLAN
- 4 BASEMENT 1 PLAN
- 5 FIRST FLOOR PLAN
- 6 SECOND FLOOR PLAN
- 7 THIRD FLOOR PLAN
- 8 FOURTH FLOOR PLAN
- 9 EAST ELEVATION
- 10 WEST ELEVATION
- 11 NORTH AND SOUTH ELEVATIONS
- 12 SECTIONS
- 13 VIEW FROM BERKELEY TERRACE
- 14 VIEW FROM CAMPUS
- 15 VIEW FROM WHITEHAVEN PKWY
- 16 CAMPUS CONTEXT

**PROJECT DATA:**

**ZONING SUMMARY:**

<b>LOCATION:</b>	SQUARE 1374, LOT 850		
<b>ZONE:</b>	R-1-A AND R-1-B		
<b>LAND AREA:</b>	970,665 SF		
<b>APPROXIMATE NET NEW GROSS FLOOR AREA:</b>	65,561 SF (92,761 SF-27,200 SF)		
<b>APPROXIMATE NET NEW FAR:</b>	0.067 FAR		
	<b>ALLOWABLE/REQUIRED</b>	<b>PROPOSED</b>	
<b>HEIGHT</b>	ROOFLINE OF EXISTING PELHAM BUILDING	ROOFLINE OF EXISTING PELHAM BUILDING	
<b>LOT AREA (R-1-A/R-1-B)</b>	PER APPROVED CAMPUS PLAN	PER APPROVED CAMPUS PLAN	
<b>LOT WIDTH (R-1-A/R-1-B)</b>	PER APPROVED CAMPUS PLAN	PER APPROVED CAMPUS PLAN	
<b>BUILDING AREA</b>	PER APPROVED CAMPUS PLAN	PER APPROVED CAMPUS PLAN	
<b>LOADING BERTH</b>	PER APPROVED CAMPUS PLAN	PER APPROVED CAMPUS PLAN	
<b>LOADING PLATFORM</b>	PER APPROVED CAMPUS PLAN	PER APPROVED CAMPUS PLAN	
<b>SERVICE/ DELIVERY SPACE</b>	PER APPROVED CAMPUS PLAN	PER APPROVED CAMPUS PLAN	
<b>ON-SITE PARKING</b>	PER APPROVED CAMPUS PLAN	NONE/PARKING PROVIDED PER APPROVED CAMPUS PLAN	
<b>NUMBER OF BEDS</b>	78	287	



-  PROTECTED AREAS IDENTIFIED IN 2000-2010
-  EXISTING BUILDINGS
-  PELHAM REPLACEMENT PROJECT

# SITE PLAN

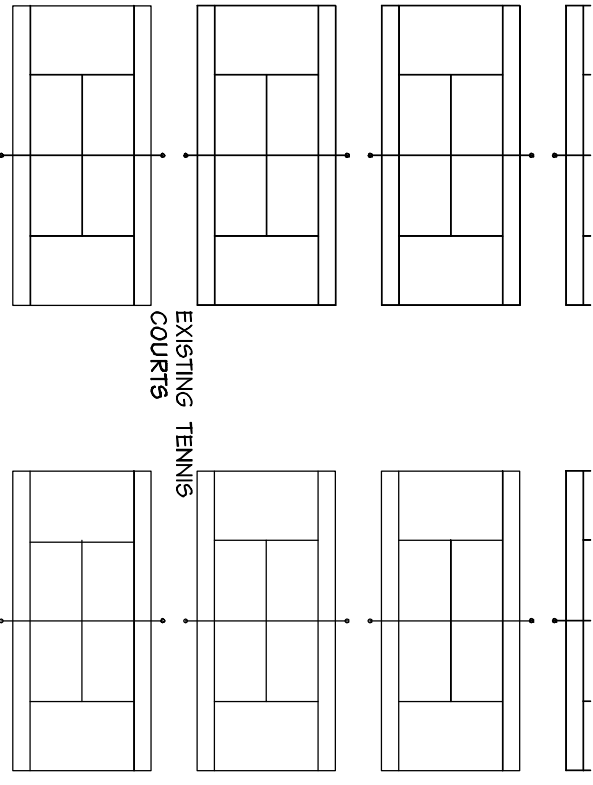
0' 120' 240'



**Proposed Tree Planting Schedule**

Qty.	Common Name	Size
20	Legacy Sugar Maple	4" caliper
3	Kousa Dogwood	3" caliper
6	Eastern Redbud	3" caliper
3	European Beech	4" caliper
4	Skyline Honeylocust	4" caliper
13	Nellie Stevens Holly	8' hgt., 3" cal
11	Bracken Southern Magnolia	8' hgt., 3" cal
8	Sweetbay Magnolia	3" caliper
24	Norway Spruce	8' hgt., 3" cal
11	Yoshino Cherry	3" caliper
12	Leyland Cypress	8' hgt., 3" cal
4	Japanese Crabapple	3" caliper
5	Scarlet Oak	4" caliper
<b>124 trees Total</b>		

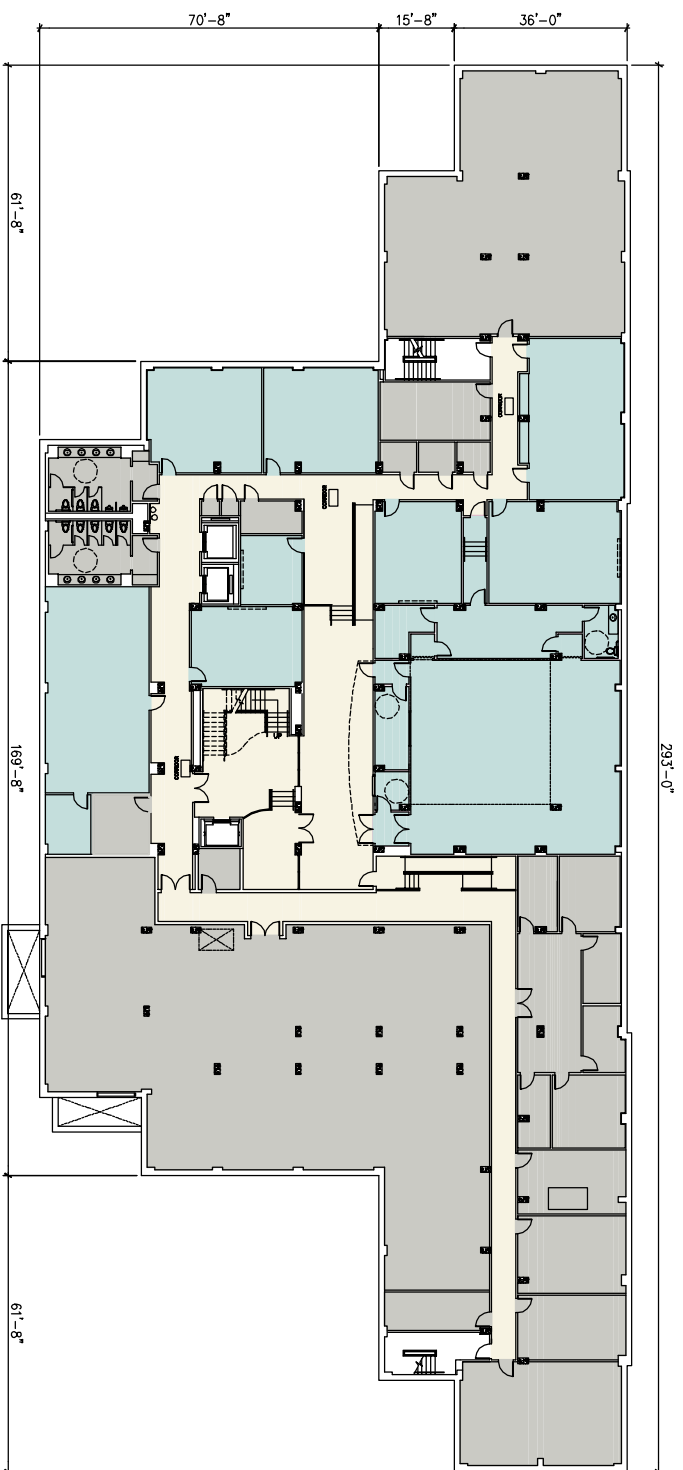
PROTECTED AREA  
SETBACK LINE



**LANDSCAPE PLAN**

0' 50' 100'



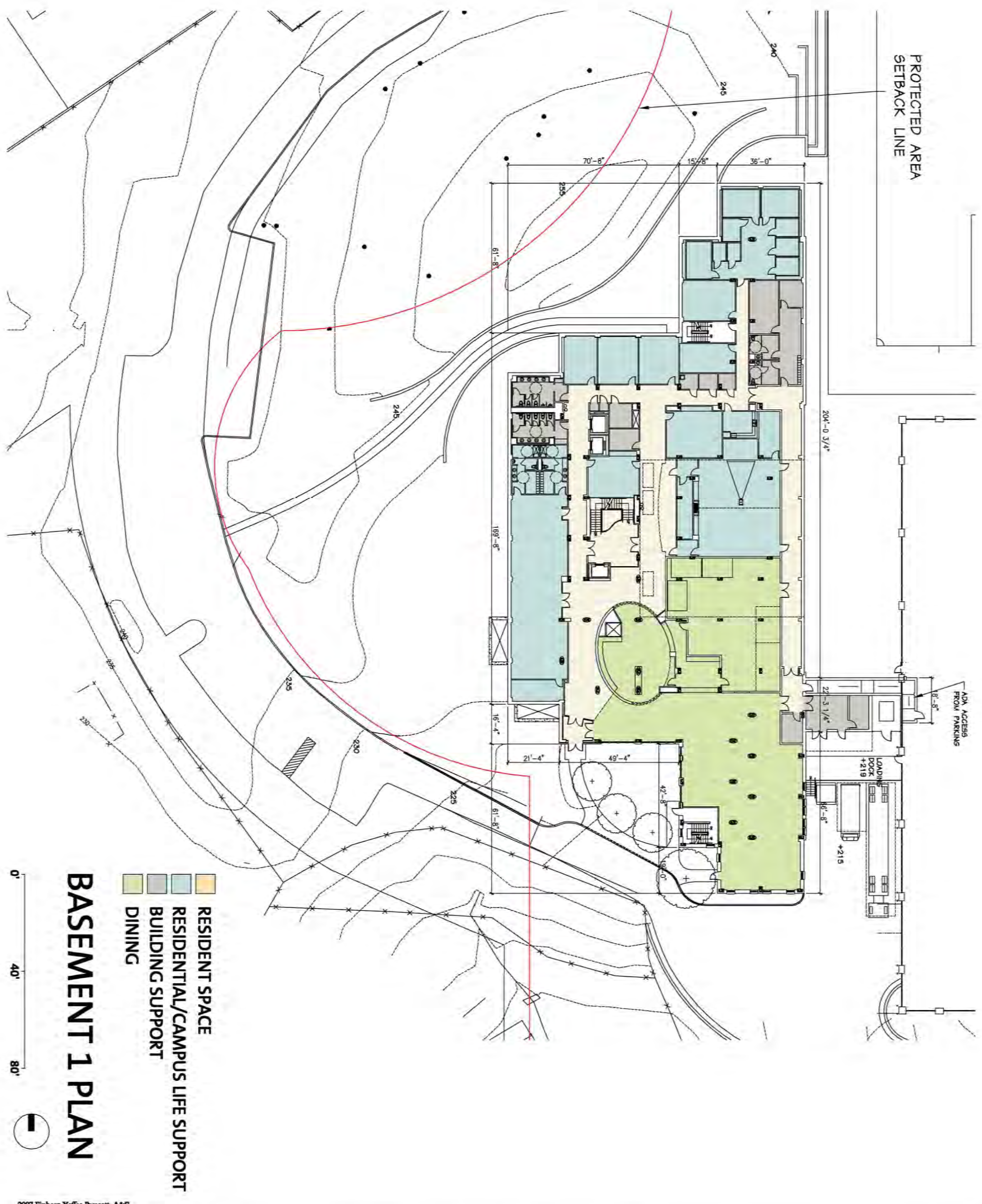


- RESIDENT SPACE
- RESIDENTIAL/CAMPUS LIFE SUPPORT
- BUILDING SUPPORT
- DINING

## BASEMENT 2 PLAN

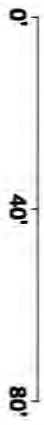
0' 40' 80'



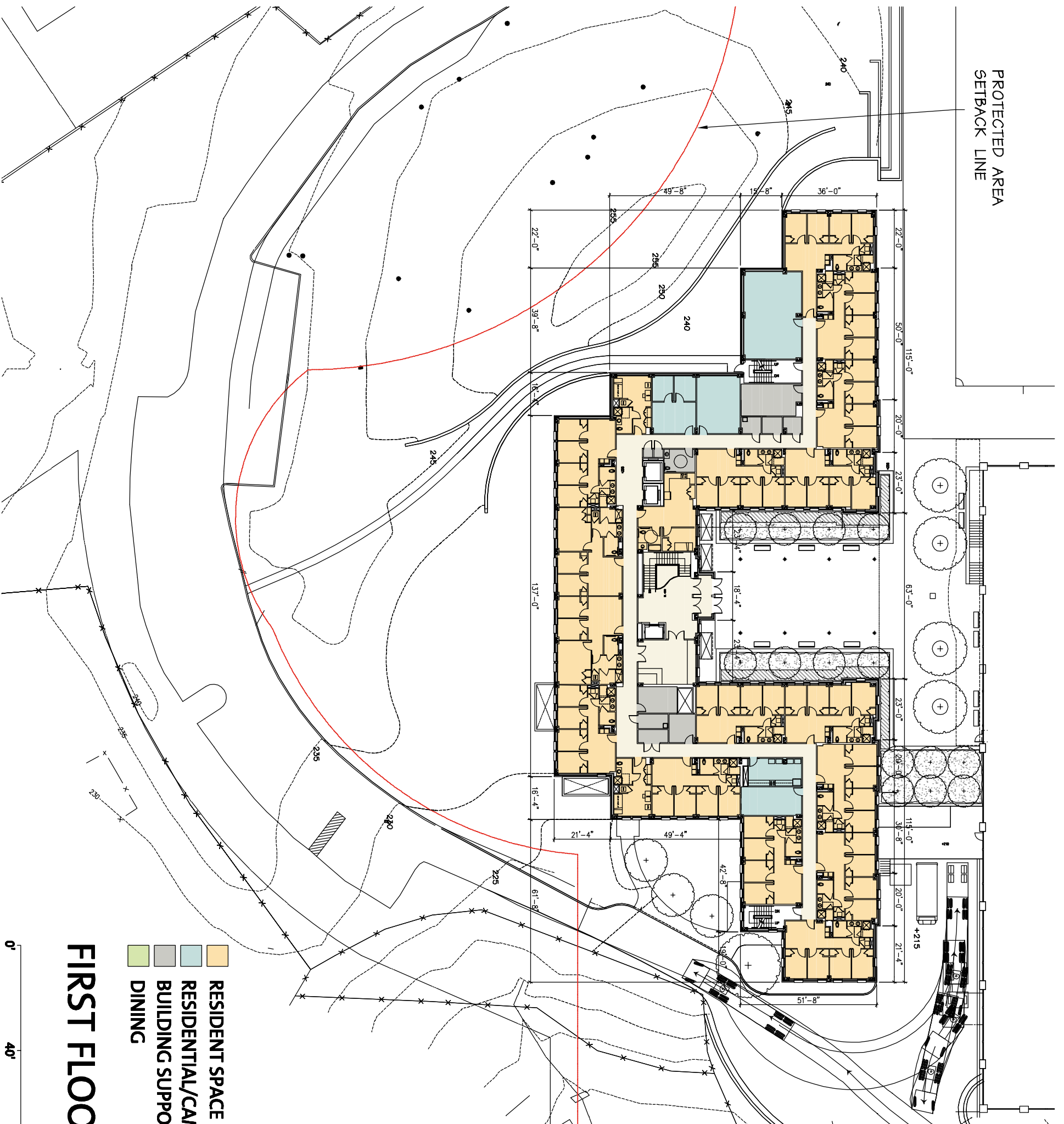


- RESIDENT SPACE
- RESIDENTIAL/CAMPUS LIFE SUPPORT
- BUILDING SUPPORT
- DINING

# BASEMENT 1 PLAN



PROTECTED AREA  
SETBACK LINE



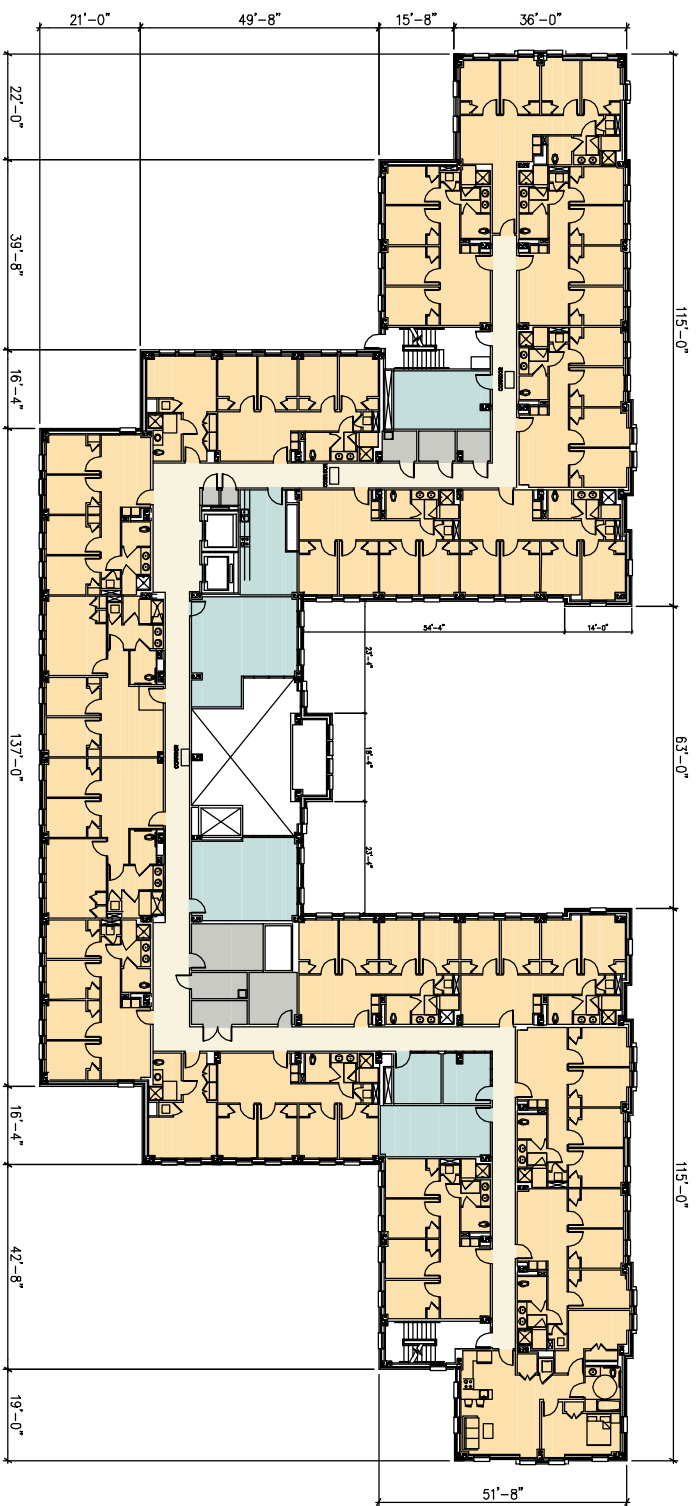
- RESIDENT SPACE
- RESIDENTIAL/CAMPUS LIFE SUPPORT
- BUILDING SUPPORT
- DINING

# FIRST FLOOR PLAN

0' 40' 80'

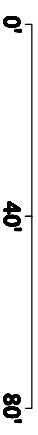


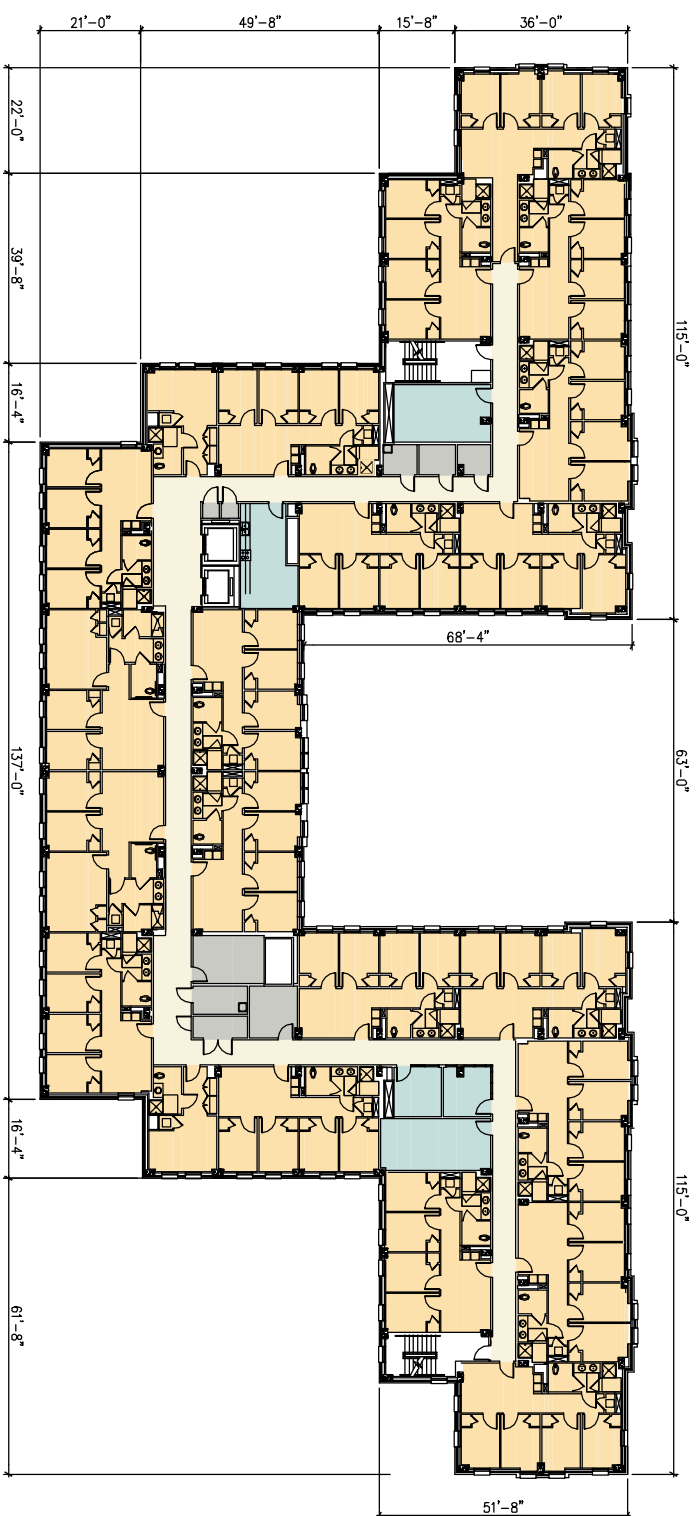




- RESIDENT SPACE
- RESIDENTIAL/CAMPUS LIFE SUPPORT
- BUILDING SUPPORT
- DINING

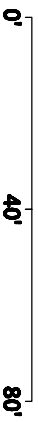
## SECOND FLOOR PLAN



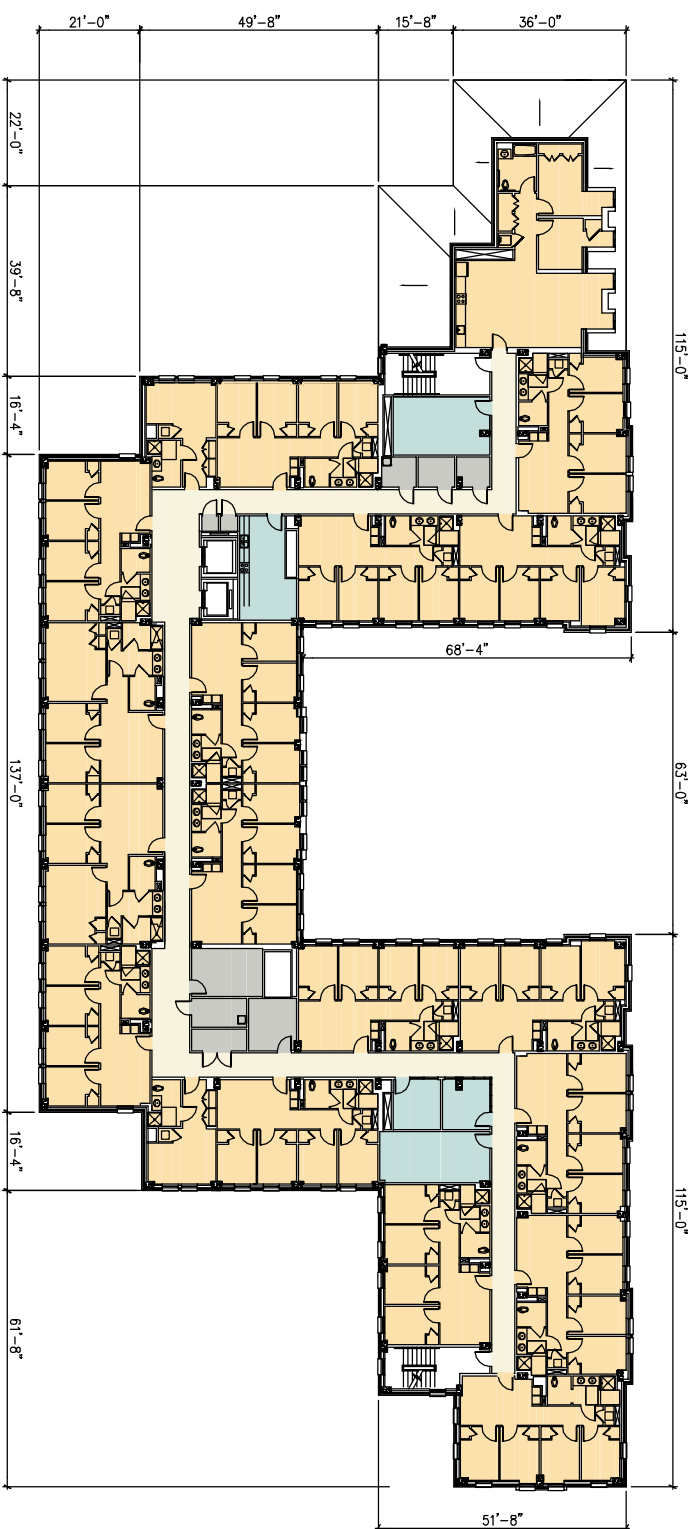


- RESIDENT SPACE
- RESIDENTIAL/CAMPUS LIFE SUPPORT
- BUILDING SUPPORT
- DINING

# THIRD FLOOR PLAN

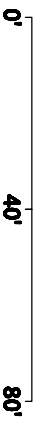


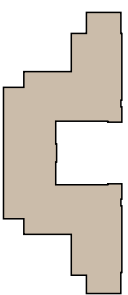
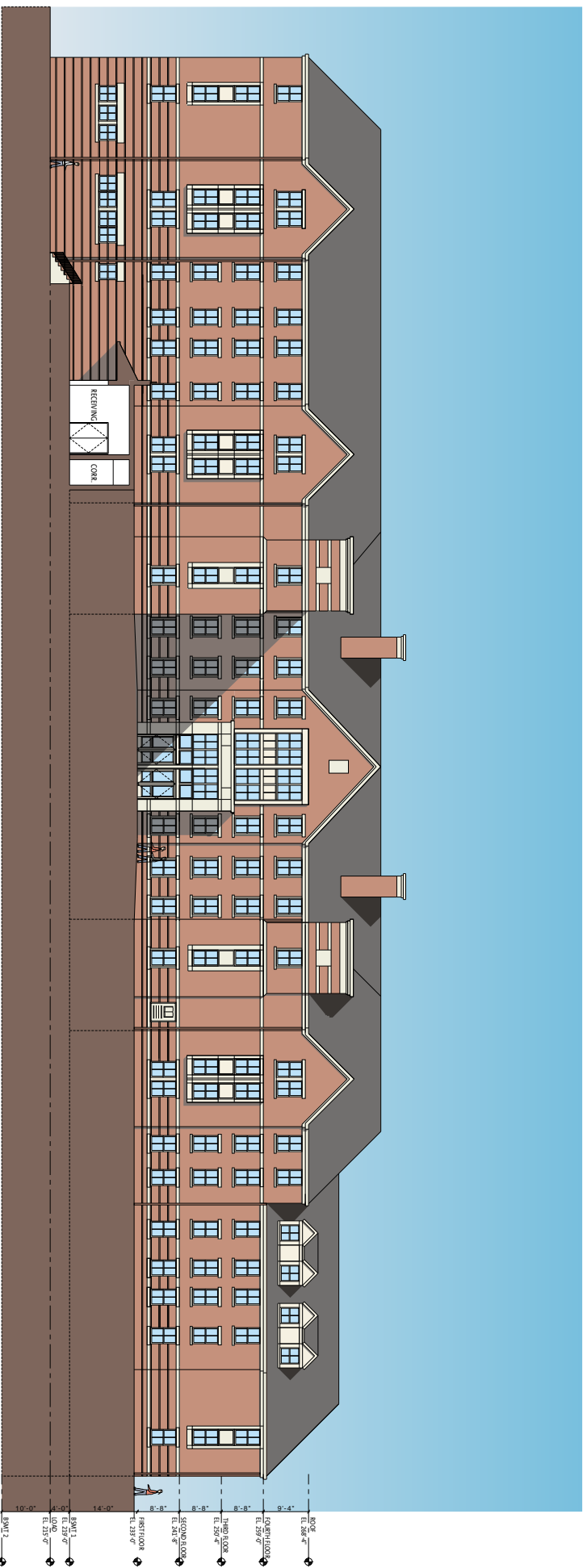




- RESIDENT SPACE
- RESIDENTIAL/CAMPUS LIFE SUPPORT
- BUILDING SUPPORT
- DINING

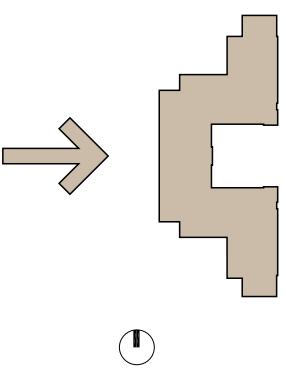
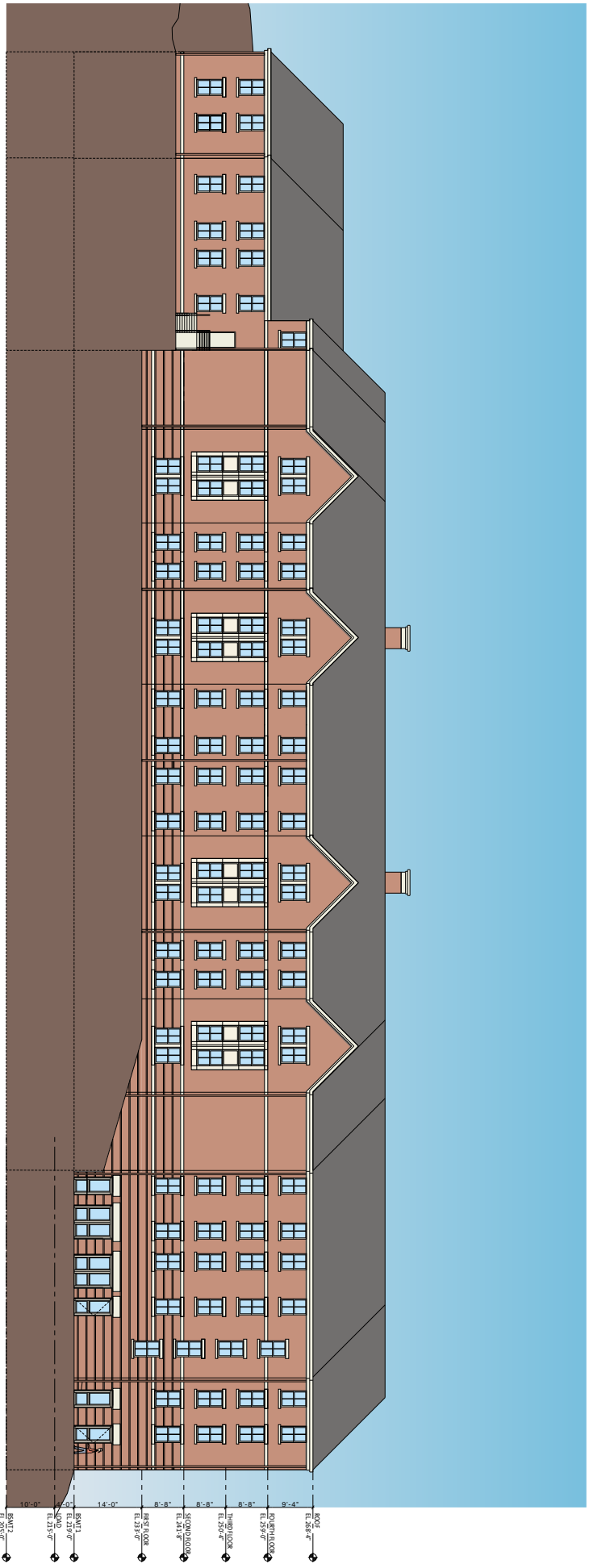
# FOURTH FLOOR PLAN





**EAST ELEVATION**

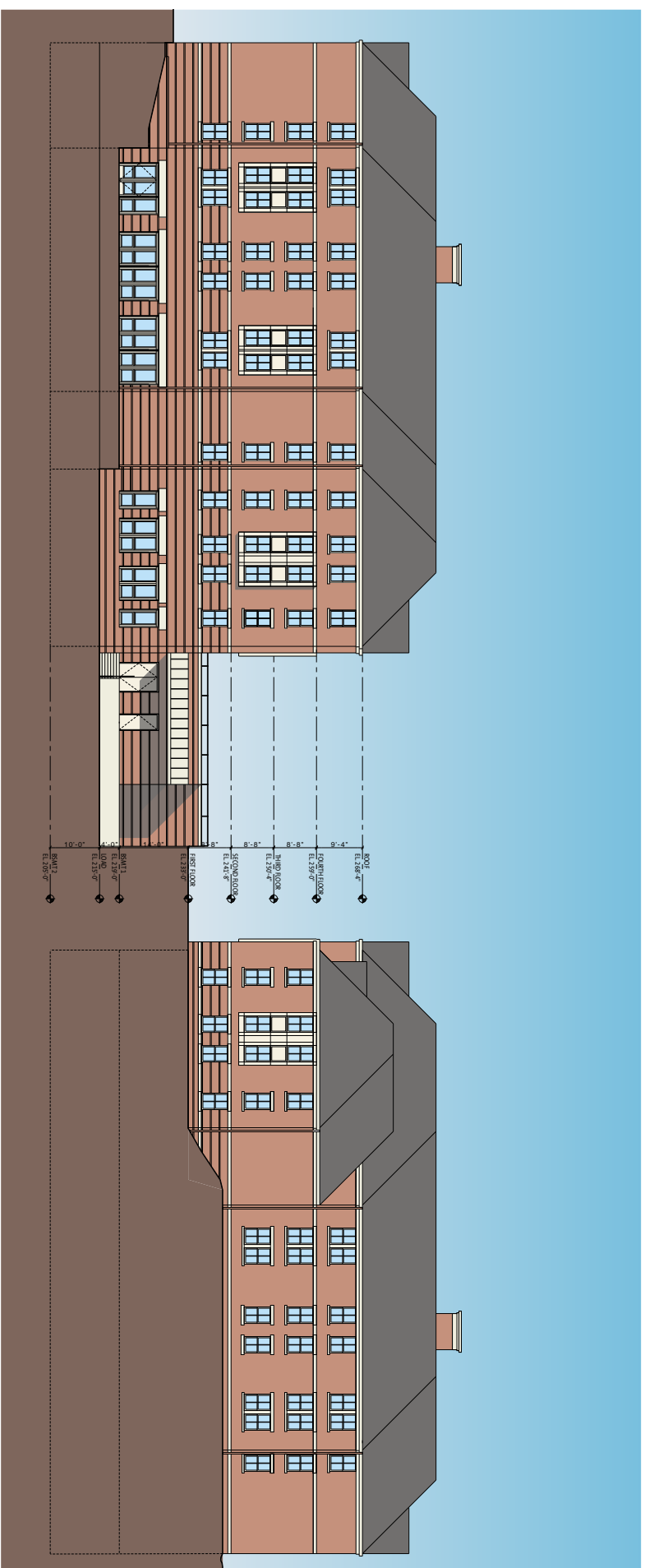
0' 32' 64'



**WEST ELEVATION**

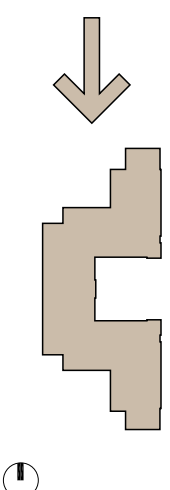
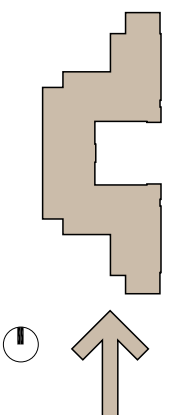
0' 32' 64'





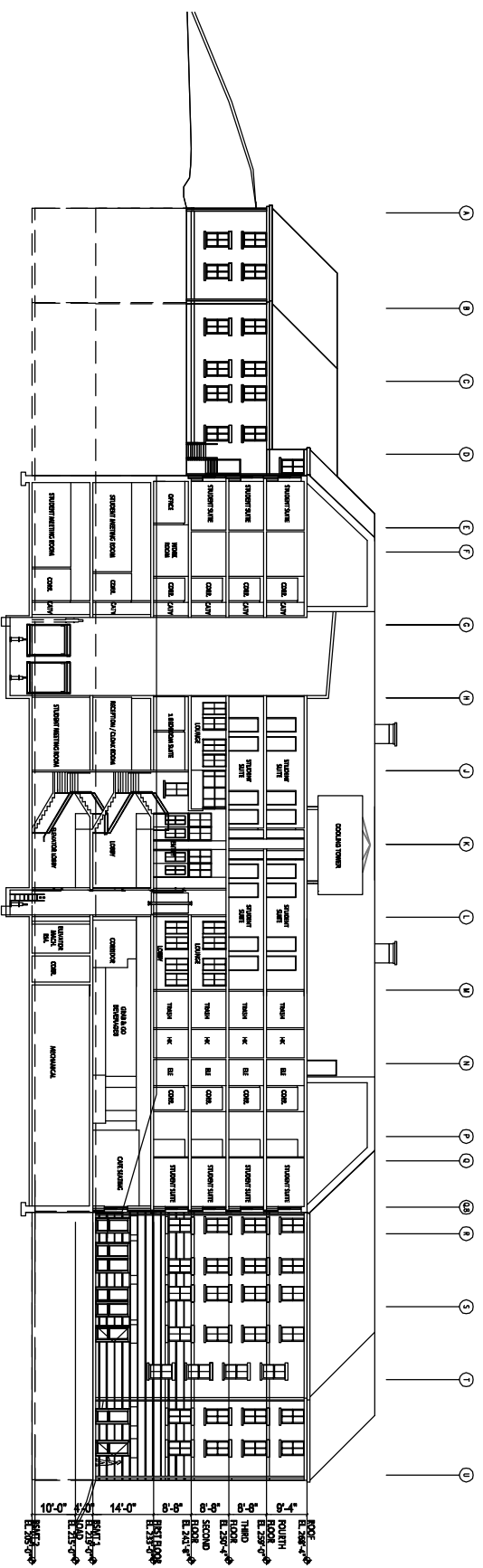
SOUTH ELEVATION

NORTH ELEVATION

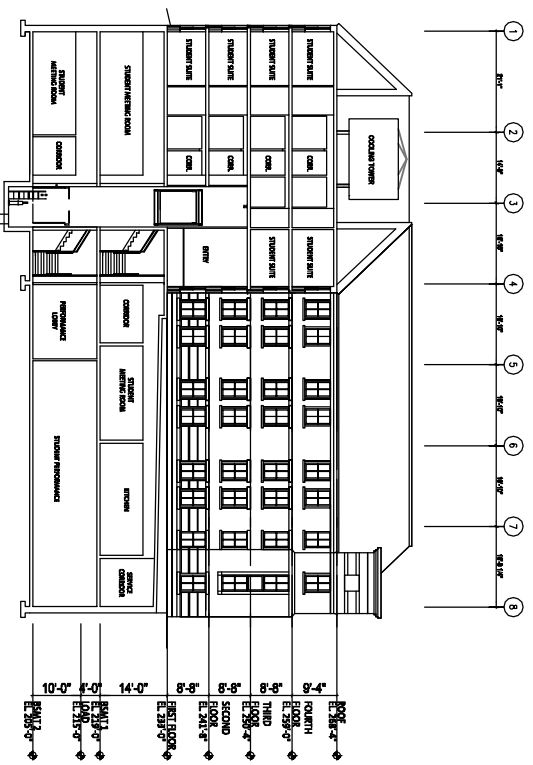


# NORTH AND SOUTH ELEVATIONS

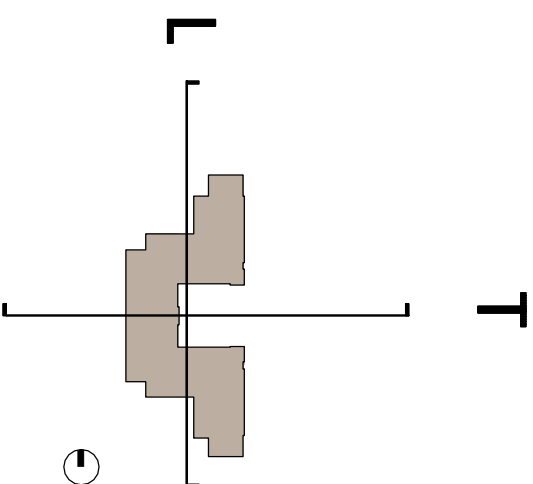
0' 32' 64'



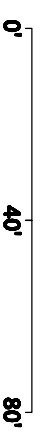
LONGITUDINAL SECTION  
FACING EAST



TRANSVERSE SECTION  
FACING NORTH



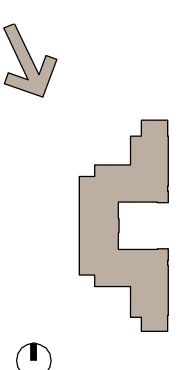
# SECTIONS





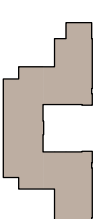
**OUTLINE OF  
EXISTING PELHAM  
TO BE DEMOLISHED**

**NOTE:  
SHOWS EXISTING LANDSCAPING  
DOES NOT ILLUSTRATE PROPOSED LANDSCAPE PLAN  
(SEE SHEET 2)**



**VIEW FROM BERKELEY TERRACE**



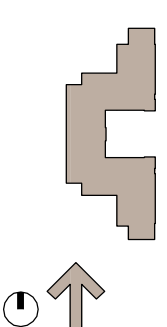


## VIEW FROM CAMPUS





**NOTE:  
SHOWS EXISTING LANDSCAPING  
DOES NOT ILLUSTRATE PROPOSED LANDSCAPE PLAN  
(SEE SHEET 2)**



## **VIEW FROM WHITEHAVEN PARKWAY**





# CAMPUS CONTEXT