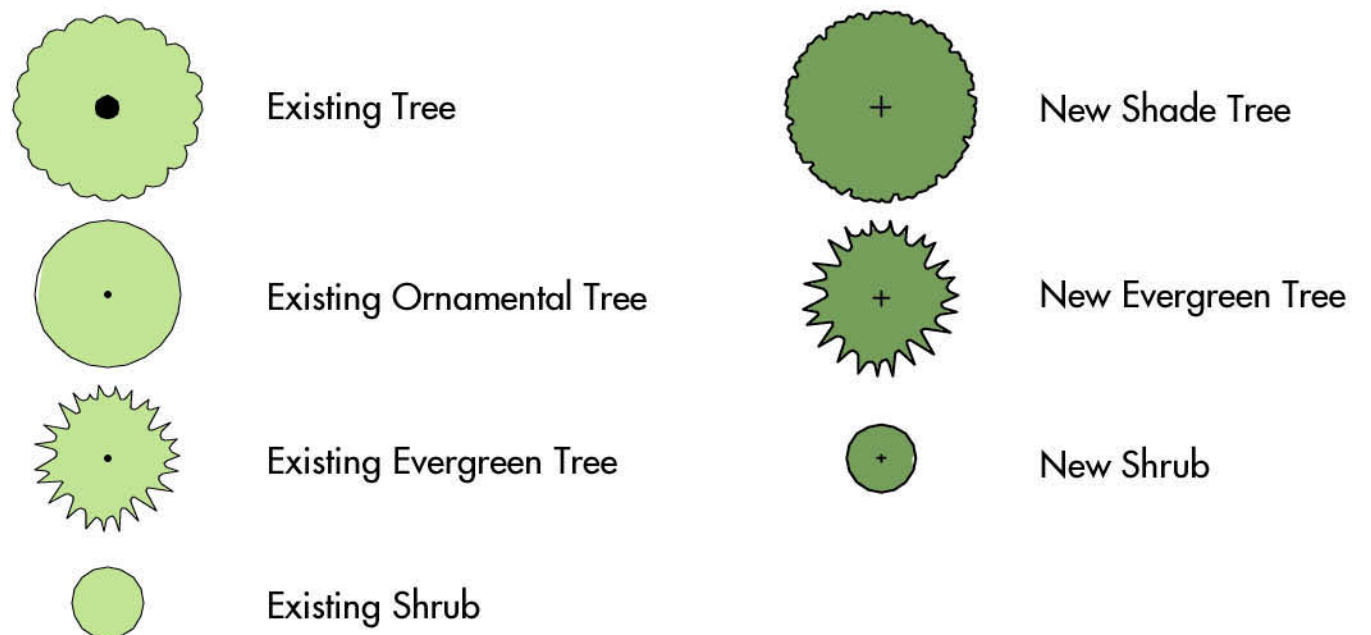




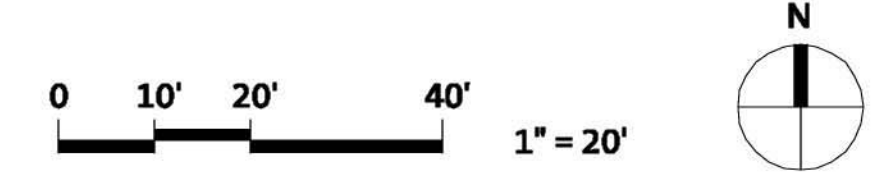
Matchline L102

Landscape Legend



Plant Schedule

| Key | Qty | Botanical Name | Common Name | Size | Remarks |
|--------------------------|-----|--|-------------------------------|--------------------|---------------|
| Deciduous Trees: | | | | | |
| QC | 29 | <i>Quercus coccinea</i> | Scarlet Oak | 4.0' cal., b&b | |
| SJ | 4 | <i>Sophora japonica</i> | Scholar Tree | 4.0' cal., b&b | |
| TD | 23 | <i>Taxodium distichum</i> | Common Bald Cypress | 4.0' cal., b&b | |
| Evergreen Trees: | | | | | |
| IDK | 31 | <i>Ilex x 'Dr. Kassab'</i> | Dr. Kassab Holly | 6' - 7' hgt., b&b | |
| MEB | 12 | <i>Magnolia grandiflora 'Edith Bogue'</i> | Edith Bogue Southern Magnolia | 7' - 8' hgt., b&b | |
| PA | 47 | <i>Picea abies</i> | Norway Spruce | 8' - 10' hgt., b&b | |
| Shrubs: | | | | | |
| PF | 43 | <i>Photinia x fraseri</i> | Red-Tipped Photinia | 36" hgt., b&b | plant 5' o.c. |
| VS | 23 | <i>Viburnum plicatum tomentosum 'Shasta'</i> | Shasta Doublefile Viburnum | 36" hgt., b&b | plant 5' o.c. |
| VP | 75 | <i>Viburnum x 'Pragense'</i> | Prague Viburnum | 48" hgt., b&b | plant 5' o.c. |
| 287 Total Trees & Shrubs | | | | | |



CONSULTANTS:

STEPHENSON & GOOD
Landscape Architecture
916 Prince Street, Alexandria, Virginia 22314
703.548.2000

KEY PLAN:

PRELIMINARY SUBMISSION 07.18.07

GEORGE WASHINGTON UNIVERSITY

Mount Vernon Campus
Landscape Improvements
Washington, DC

DATE: 07.18.2007
SCALE: 1" = 20'
EYP PROJECT NO.
DESIGNED BY: KS
DRAWN BY: DC
CHECKED BY: RWG

LANDSCAPE PLAN

NO. REVISION/SUBMISSION DATE

Einhorn Yaffe Prescott
Architecture & Engineering, P.C.
1000 Potomac Street, NW
Washington, D.C. 20007
Telephone: 202.471.5000
Fax: 202.471.5050



eypae.com