

BLOCK PLAN

THE GEORGE WASHINGTON UNIVERSITY - School of Public Health and Health Services
 Second-Stage PUD Application, Square 39
 December 22, 2010



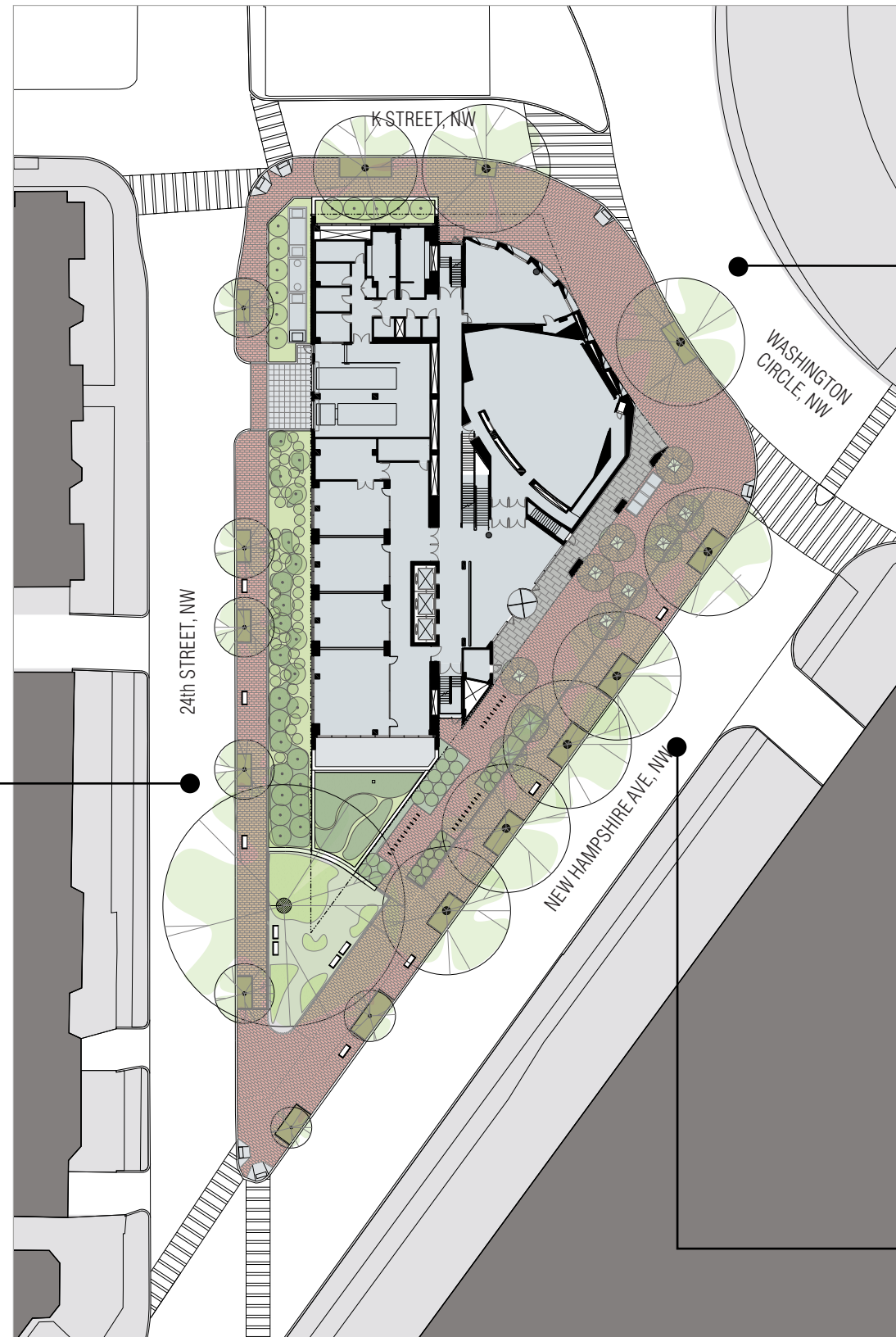
A.08





24th STREET SIDE

Context: Residential street with buildings of varying scale.
Strategy: Create a background building whose window proportions and solid-to-void ratio are sympathetic to street's residential character.



WASHINGTON CIRCLE SIDE

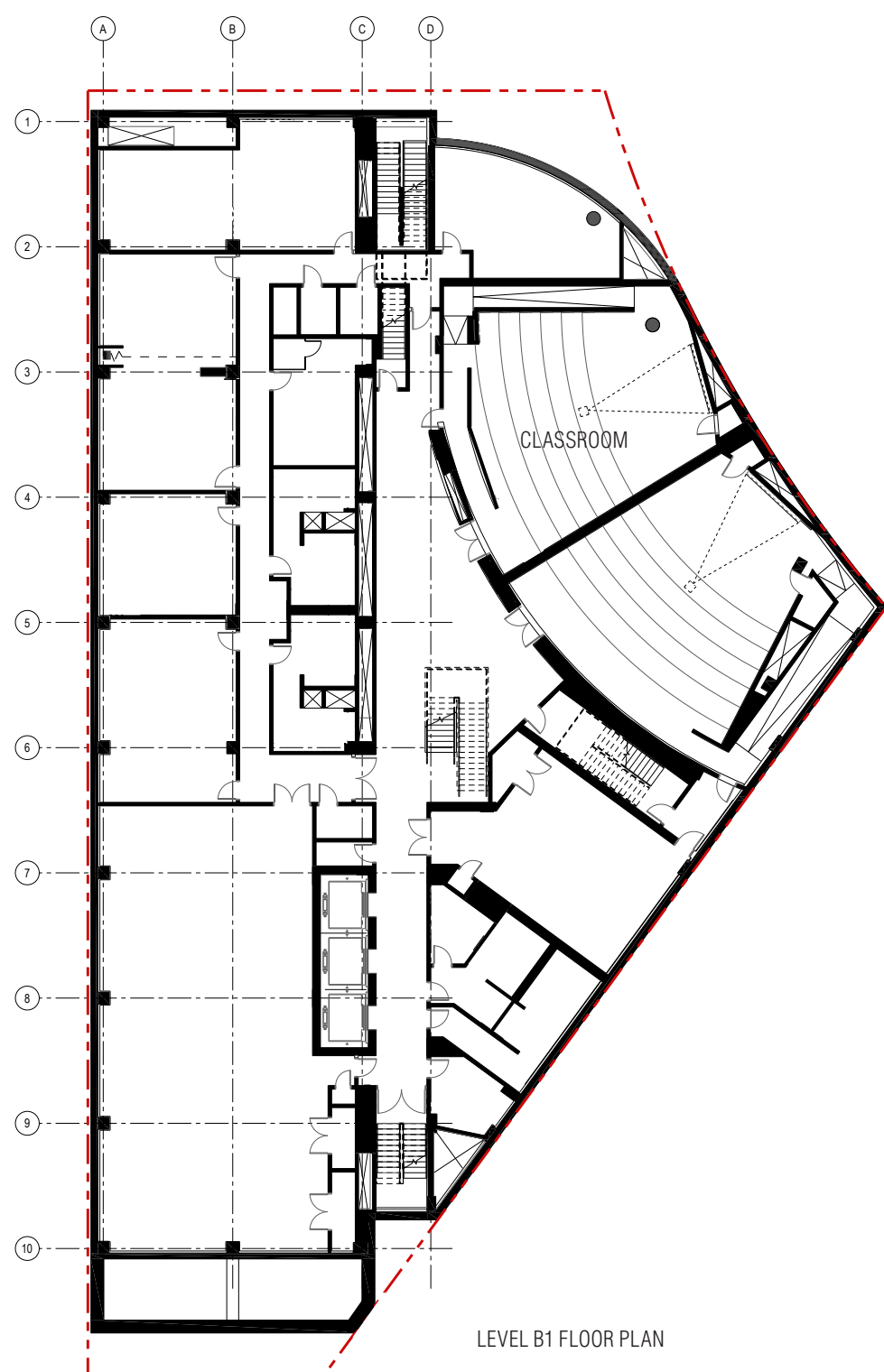
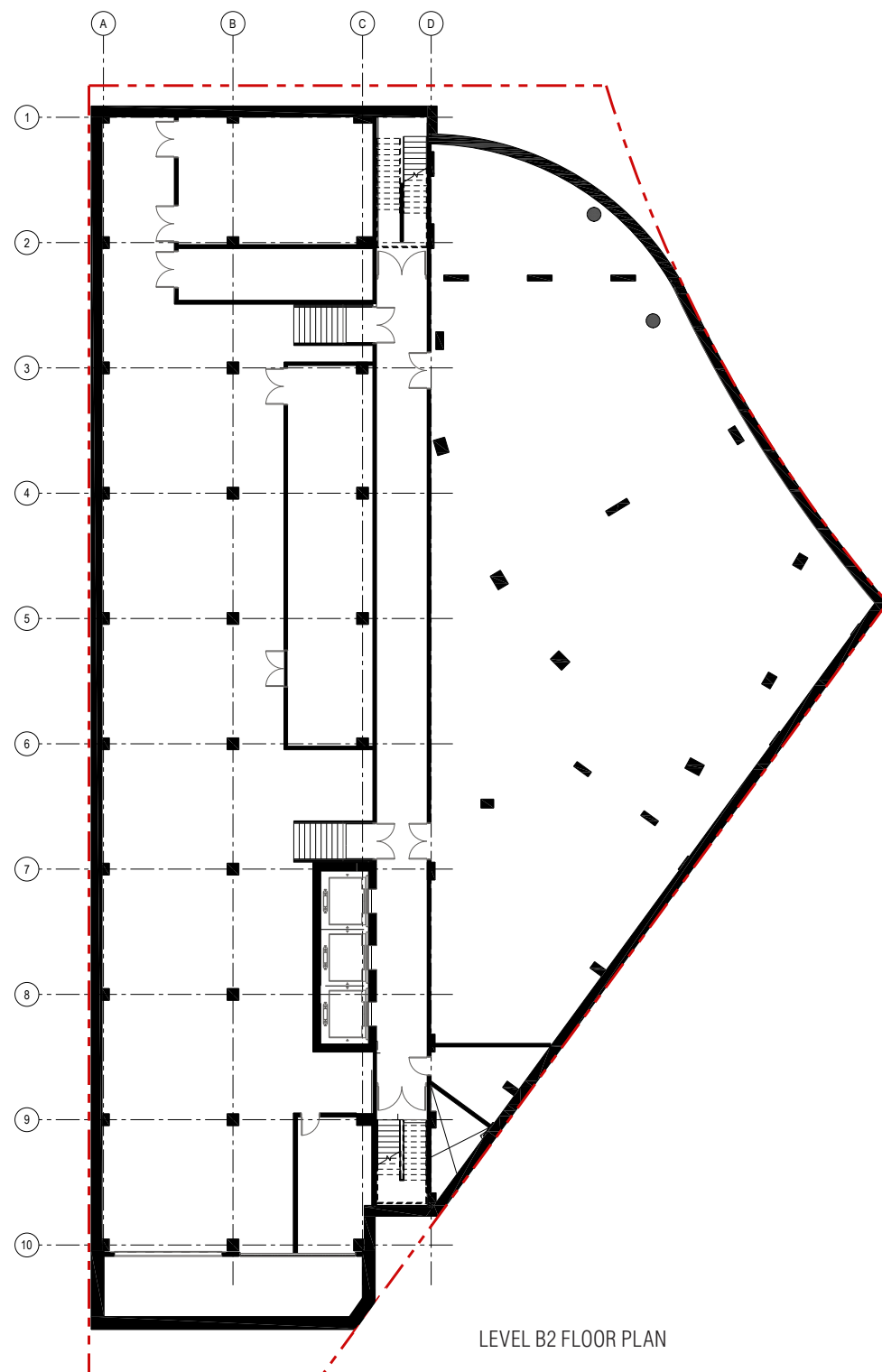
Context: One of the city's most important urban spaces.
Strategy: Continue Square 54's reinforcement of the Circle with a building of similar transparency.
 Create a gateway building for the GWU campus which acknowledges its academic, non-commercial nature.



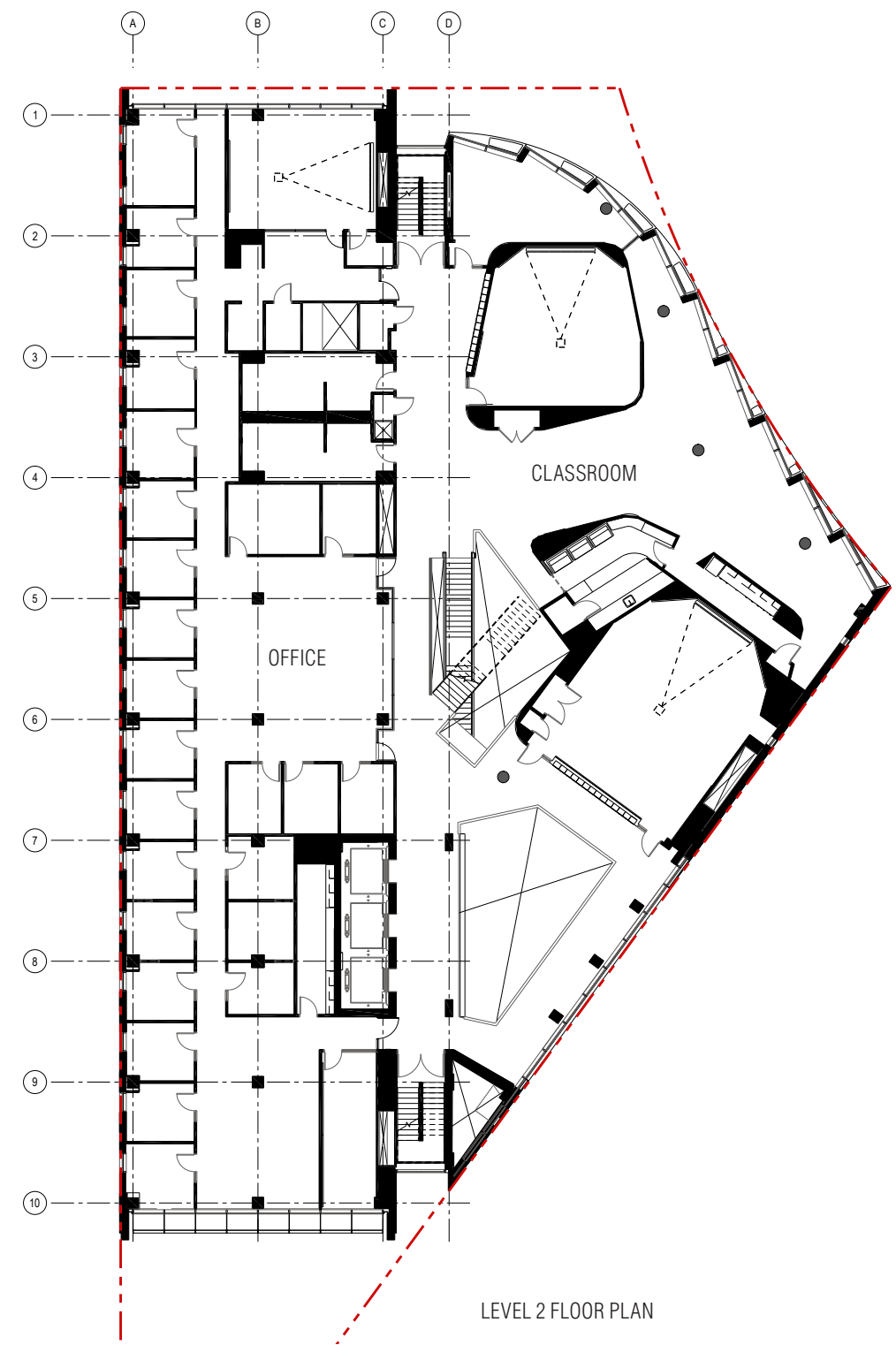
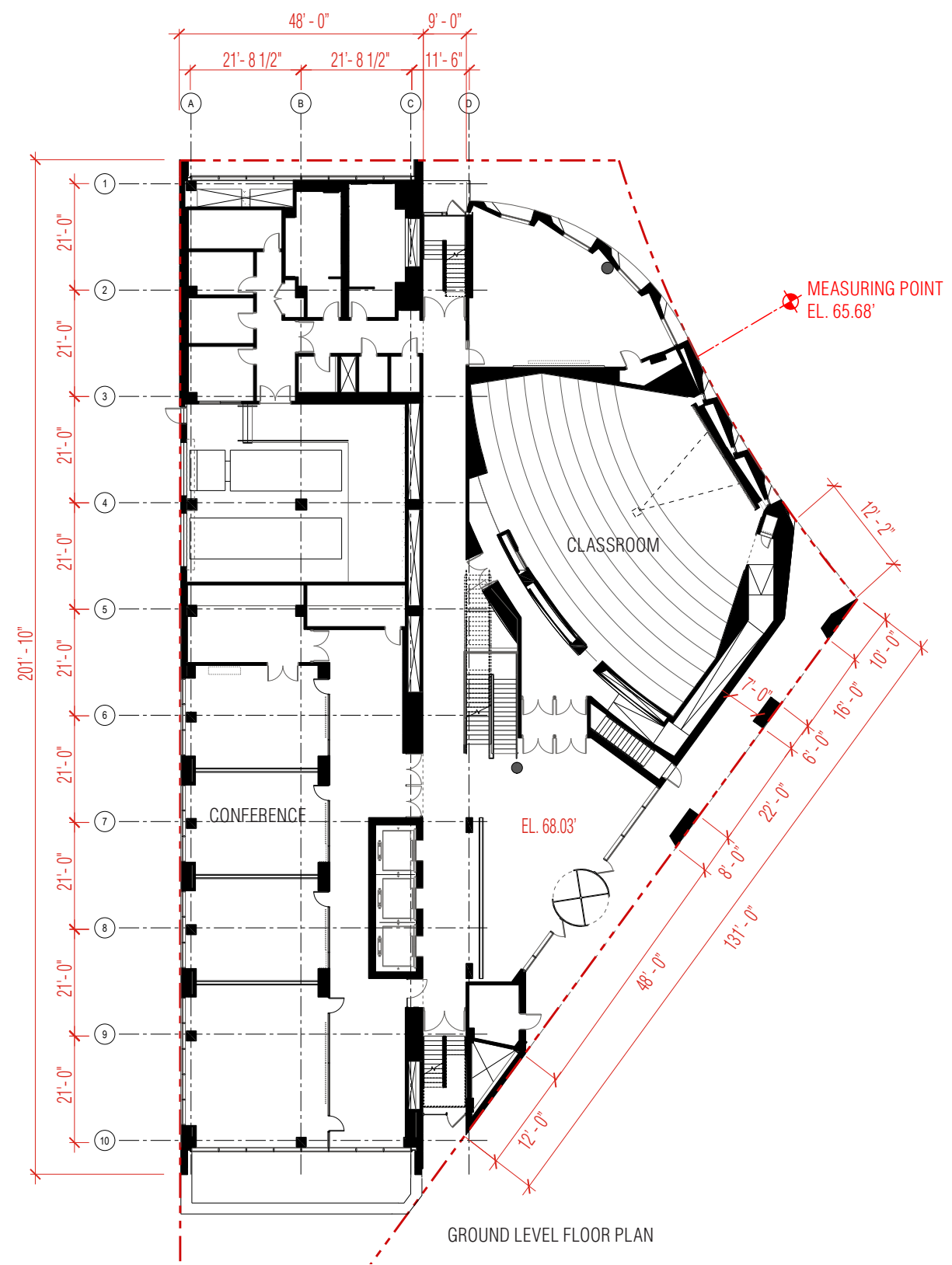
NEW HAMPSHIRE AVENUE SIDE

Context: GWU Hospital.
Strategy: Reflect the institutional quality of the street defined by the hospital, but in a more pedestrian-friendly manner.

APPROACH TO VARIED ARCHITECTURAL CONTEXT



NOTE: INTERIOR LAYOUTS ARE ILLUSTRATIVE ONLY AND SUBJECT TO CHANGE ON FINAL PLAN



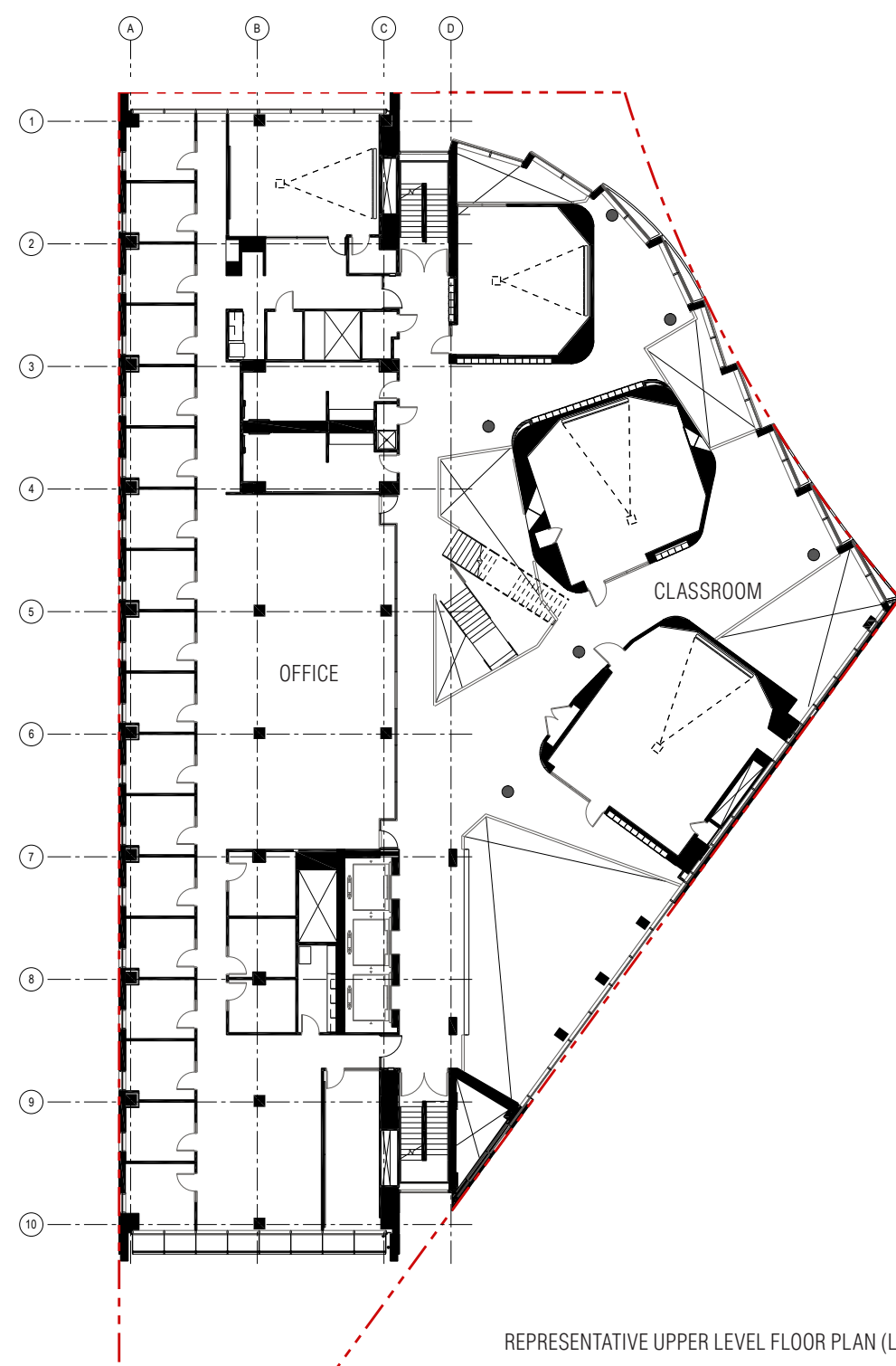
NOTE: INTERIOR LAYOUTS ARE ILLUSTRATIVE ONLY AND SUBJECT TO CHANGE ON FINAL PLAN

GROUND AND LEVEL 2 FLOOR PLANS



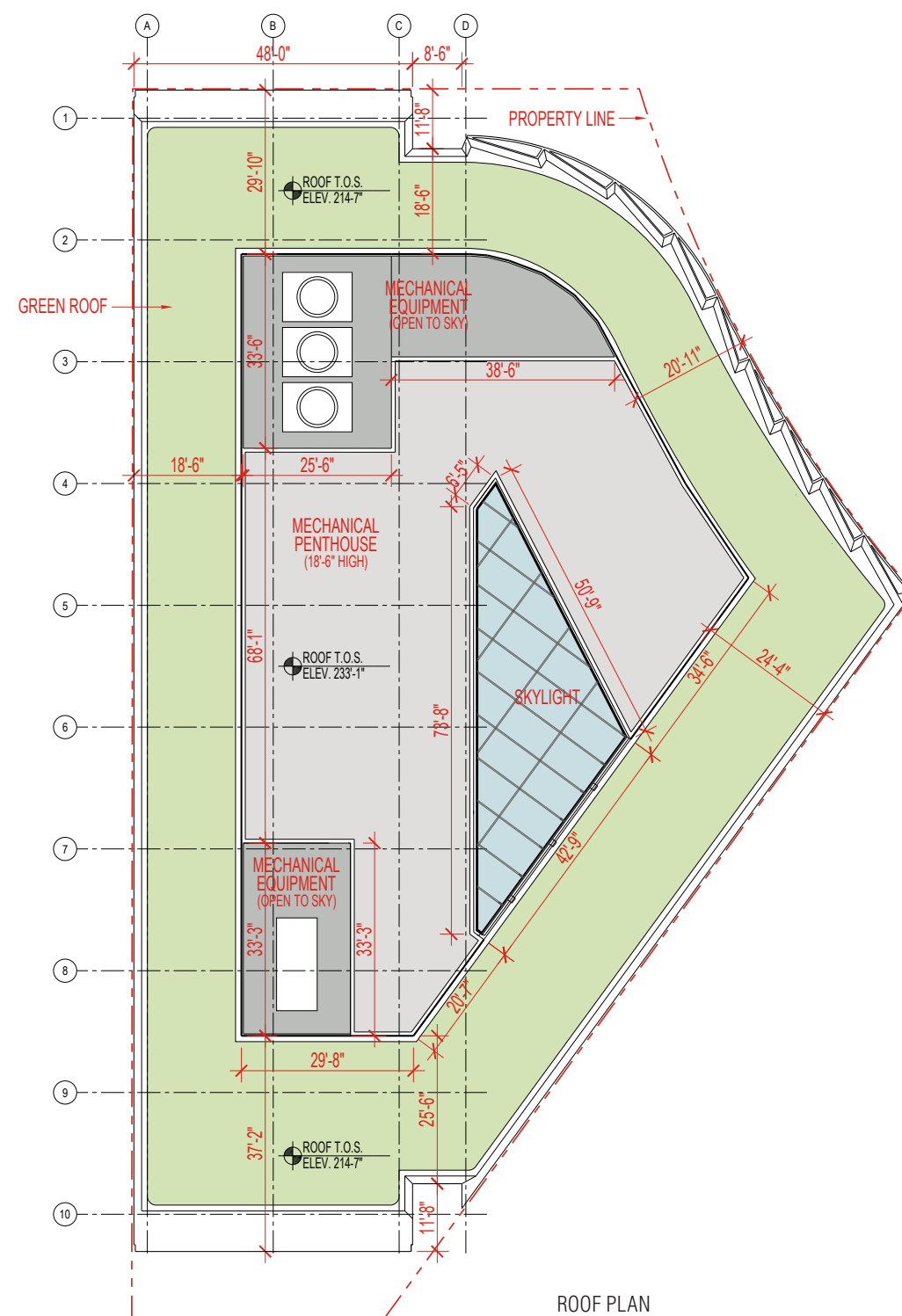
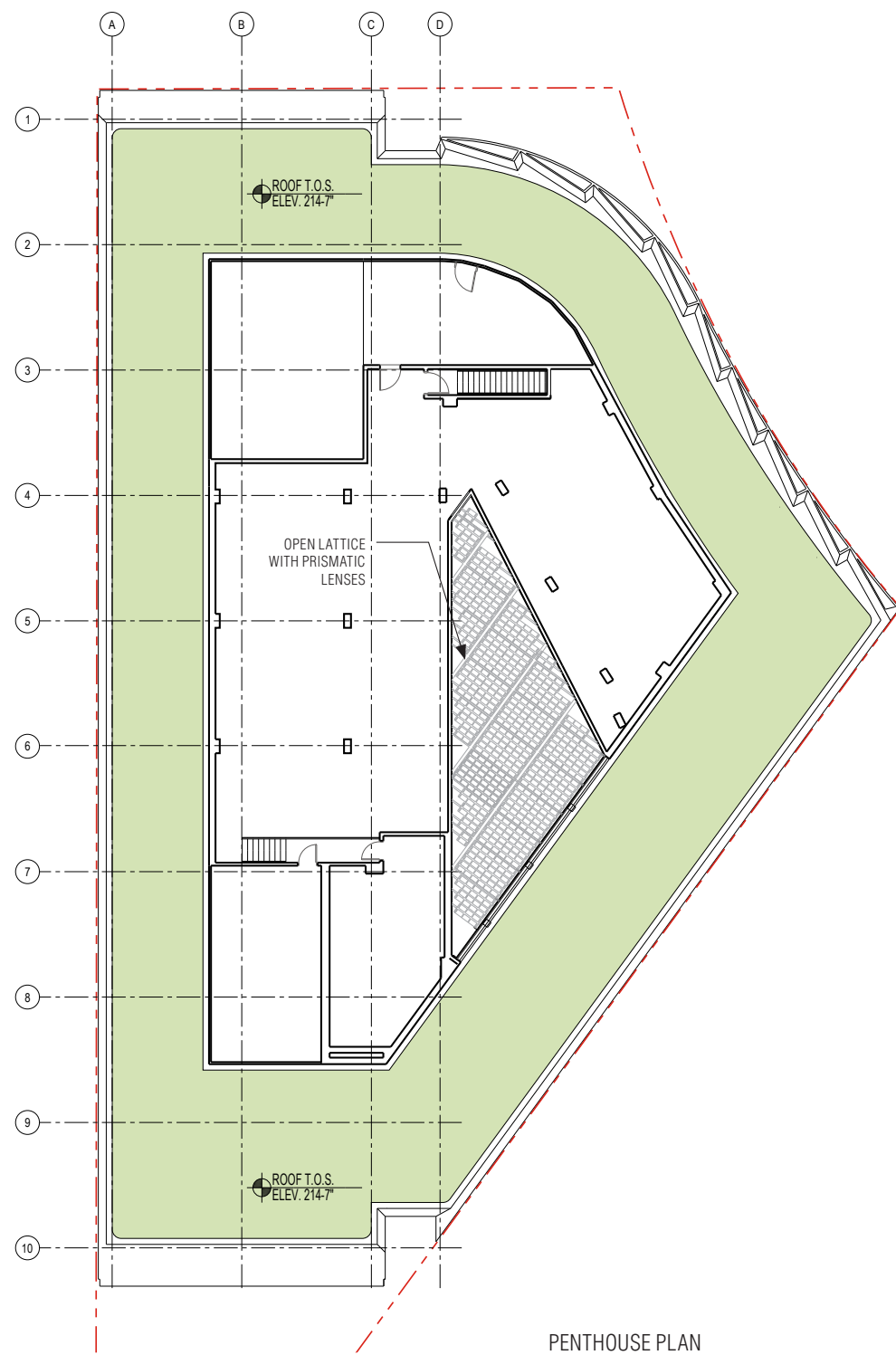


REPRESENTATIVE UPPER LEVEL FLOOR PLAN (LEVEL 4 SHOWN)

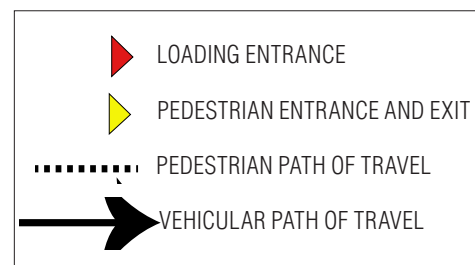
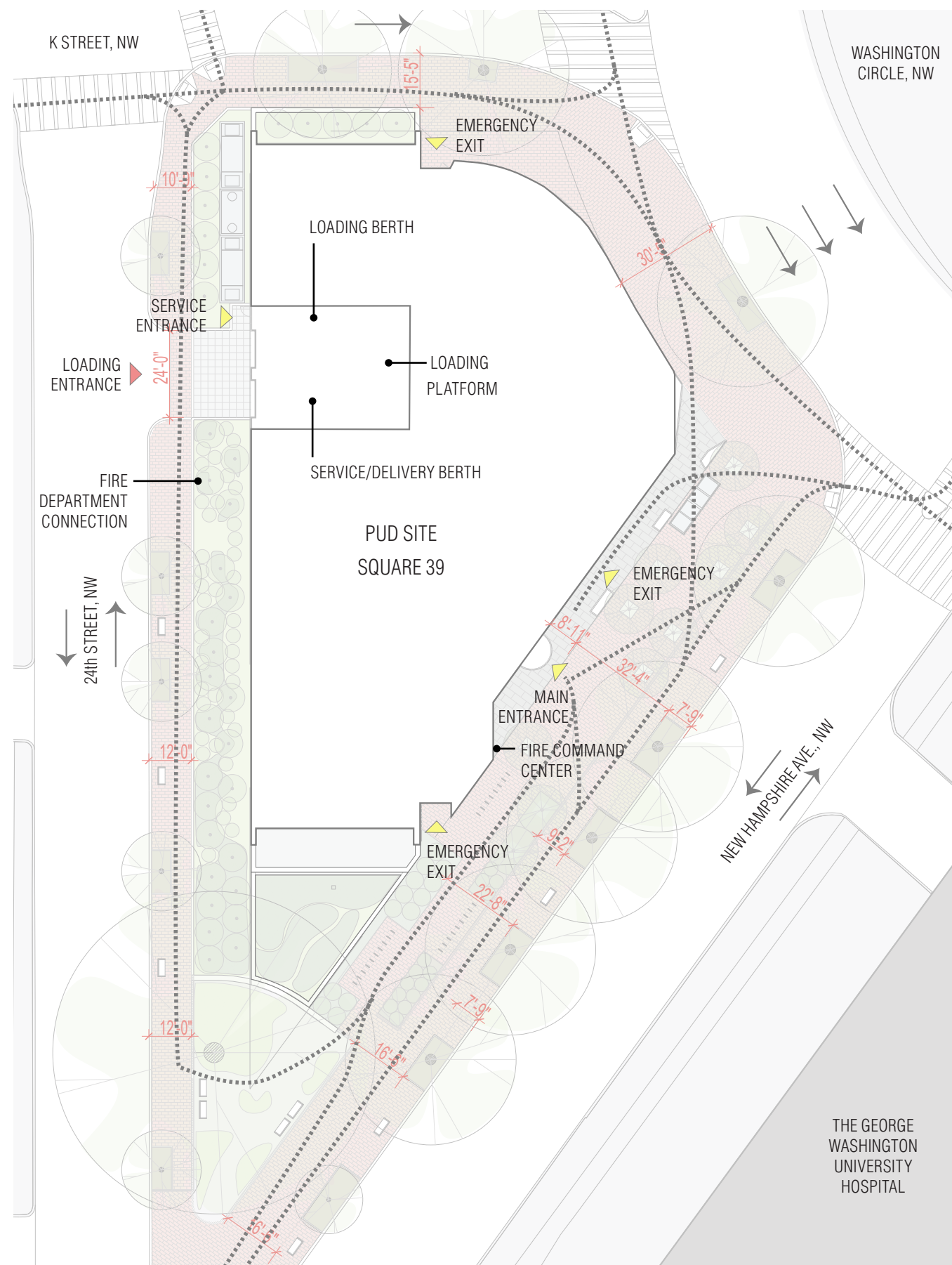


REPRESENTATIVE UPPER LEVEL FLOOR PLAN (LEVEL 5 SHOWN)

NOTE: INTERIOR LAYOUTS ARE ILLUSTRATIVE ONLY AND SUBJECT TO CHANGE ON FINAL PLAN



PENTHOUSE AND ROOF PLANS





COURTS PER DCMR

OPEN COURT A

Width Required = 22'-6"
Width Provided = 50'-8"

OPEN COURT B

Width Required = 22'-6"
Width Provided = 33'-5"

DEFINITIONS - PER DCMR 199

- Closed Court
- Open Court
- Court Niche

COURT PLAN



A.16

