
2100 PENNSYLVANIA AVENUE, NW
Z.C. CASE NO. 06-110/06-120 PRE-HEARING SUBMISSION

July 28, 2017

LAND OWNER
GEORGE WASHINGTON UNIVERSITY
2121 Eye Street, NW, Suite 701
Washington, DC 20052
T: 202 994 6600 F: 202 994 9304

DESIGN ARCHITECT
PELLI CLARKE PELLI ARCHITECTS
322 Eighth Avenue, 11th Floor
New York, NY 10001
T: 212 417 9496 F: 212 417 9497

CIVIL ENGINEER
WILES MENSCH CORPORATION
11860 Sunrise Valley Drive, Suite 200
Reston, VA 20191
T: 703 391 7600 F: 703 264 0595

DEVELOPER
BOSTON PROPERTIES
2200 Pennsylvania Avenue, NW, Suite 200W
Washington, DC 20006
T: 202 585 0847 F: 202 585 0888

EXECUTIVE ARCHITECT
WDG ARCHITECTURE
1025 Connecticut Avenue, NW, Suite 300
Washington, DC 20036
T: 202 857 8300 F: 202 463 2198

TRAFFIC CONSULTANT
WELLS & ASSOCIATES
1420 Spring Hill Road, Suite 600
McLean, VA 22102
T: 703 917 6620 F: 703 917 0739

LAND ATTORNEY
GOULSTON & STORRS
1999 K Street, NW, Suite 500
Washington, DC 20006
T: 202 721 0011 F: 202 263 0501





2100 PENN AVE, NW

DESIGN PROGRESS 07.28.2017

CURRENT EXTERIOR RENDERING - PENN AVENUE AND 21ST STREET

COPYRIGHT © 2017 **Pelli Clarke Pelli** Architects

with WDG Architecture
BOSTON PROPERTIES



2100 PENN AVE, NW

DESIGN PROGRESS 07.28.2017

CURRENT EXTERIOR RENDERING - 21ST AND I STREET

COPYRIGHT © 2017 Pelli Clarke Pelli Architects

with WDG Architecture
BOSTON PROPERTIES



2100 PENN AVE, NW

DESIGN PROGRESS 07.28.2017

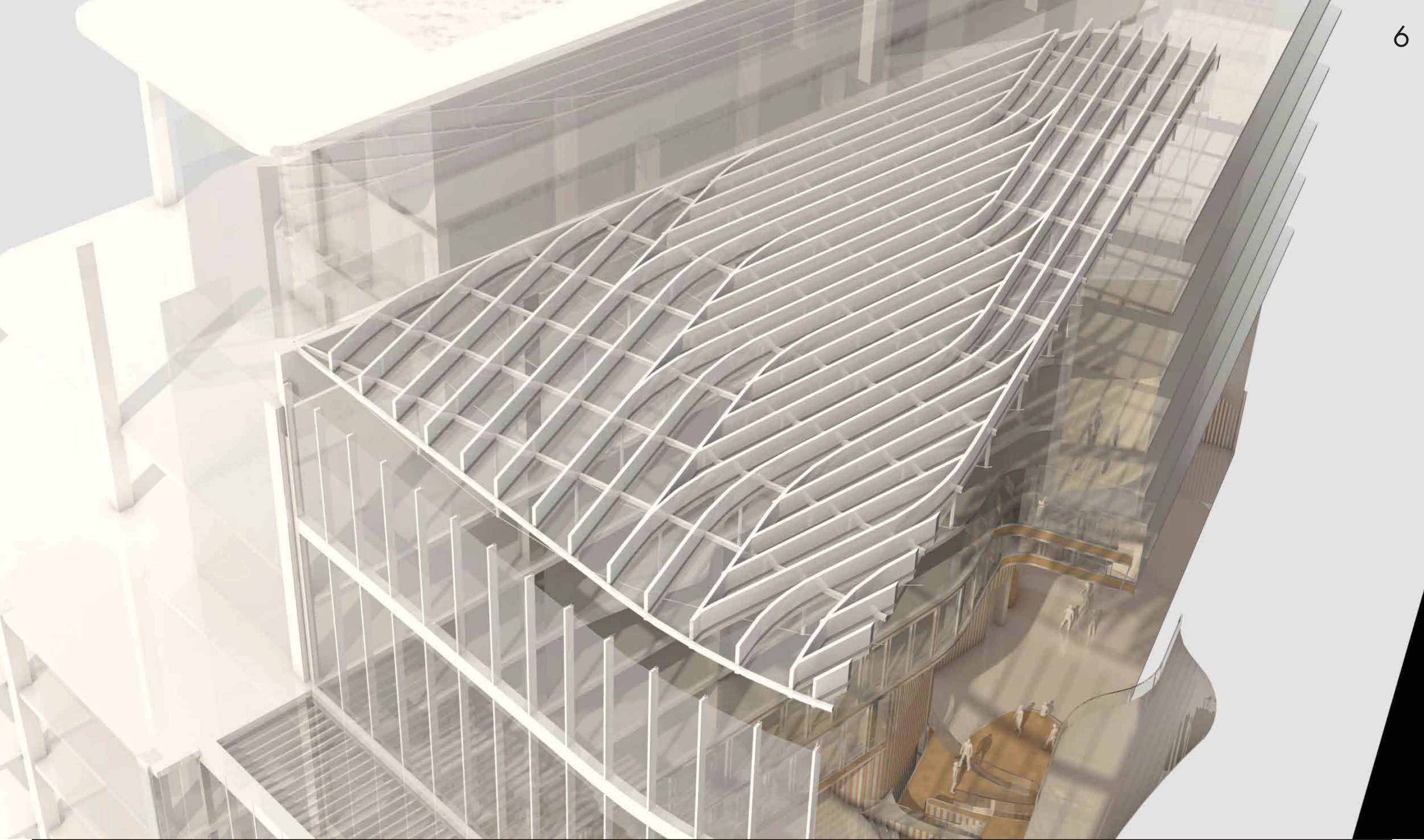
CURRENT EXTERIOR RENDERING - RETAIL AT I STREET

COPYRIGHT © 2017 Pelli Clarke Pelli Architects

with WDG Architecture
BOSTON PROPERTIES









CLEAR VISION GLASS
W/ LOW-E COATING

CLEAR VISION GLASS

STONE/TERRACOTTA

METAL

STONE BASE

3' X 3' SCORED
CONCRETE

NOTE: QUANTITY, LOCATION, SWING, AND TYPE OF RETAIL DOORS SUBJECT TO CHANGE UPON TENANT BUILD-OUT. STREETScape DETAILS ARE SHOWN IN CONCEPT FOR ILLUSTRATIVE PURPOSES. THE FINAL DETAIL OF STREETScape IMPROVEMENTS WILL BE SELECTED DURING DETAILED DESIGN PHASES OF WORK AND CONFIRMED WITH APPLICABLE DESIGN AND PERMITTING STANDARDS.

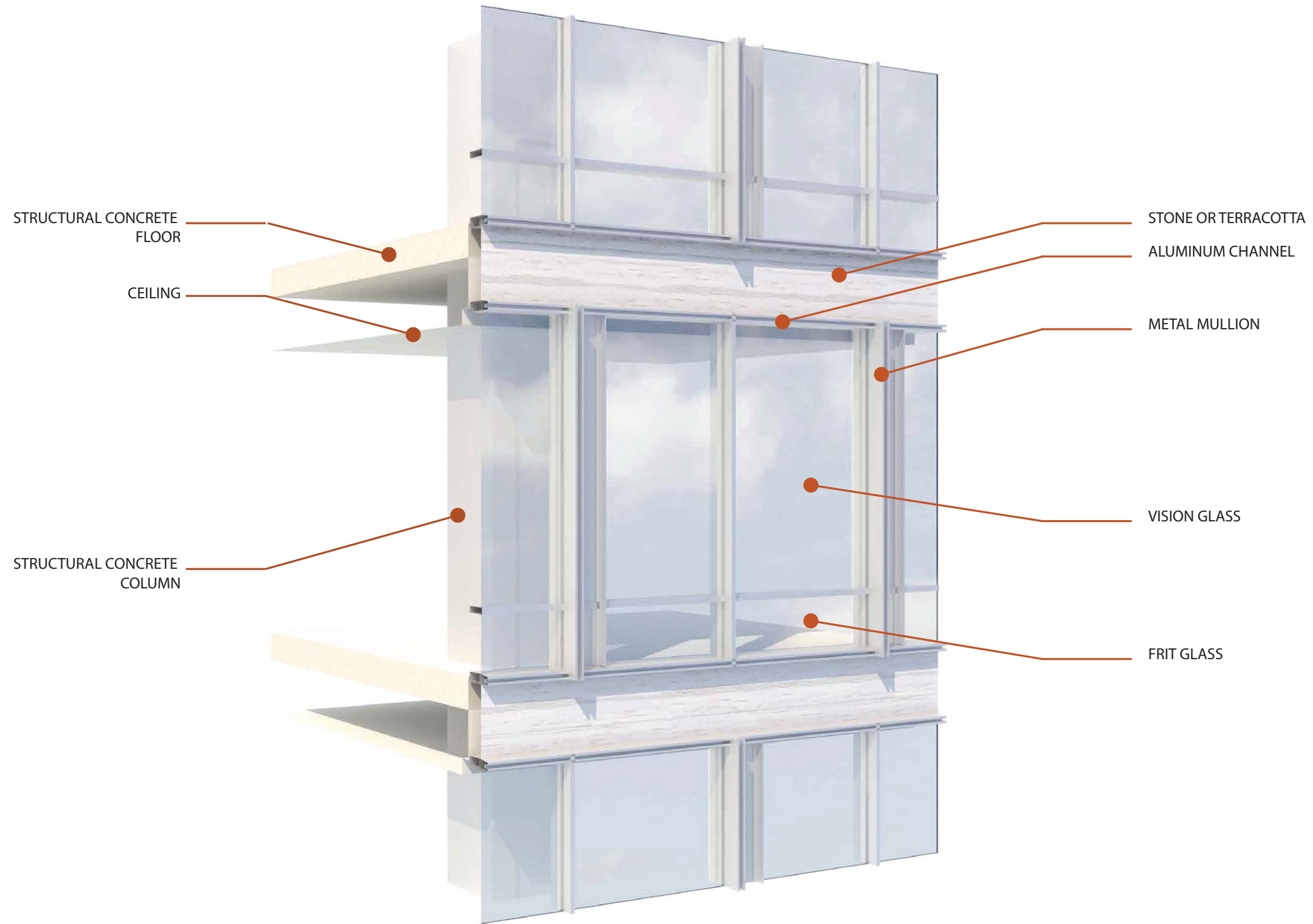
2100 PENN AVE, NW

DESIGN PROGRESS 07.20.2017

21ST STREET AND PENN AVENUE VIEW - CURRENT SCHEME

COPYRIGHT © 2017 Pelli Clarke Pelli Architects
with WDG Architecture
BOSTON PROPERTIES







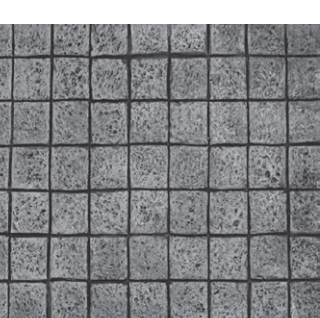
DC TWIN20 GLOBE



METAL RAIL AT TREE BOX



DDOT STANDARD BICYCLE RACK



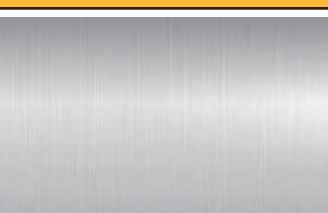
4"x 4" STND. DDOT GRANITE COBBLE PAVERS

CLEAR VISION GLASS W/ LOW-E COATING

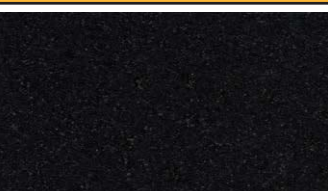
CLEAR VISION GLASS



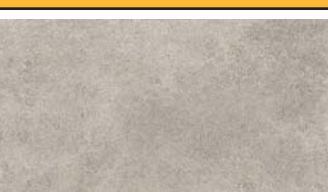
STONE/TERRACOTTA



METAL



STONE BASE



3' X 3' SCORED CONCRETE

NOTE: SIGNAGE SHOWN FOR ILLUSTRATIVE PURPOSES ONLY. QUANTITY, LOCATION, SWING, AND TYPE OF RETAIL DOORS SUBJECT TO CHANGE UPON TENANT BUILD-OUT. STREETS-CAPE DETAILS ARE SHOWN IN CONCEPT FOR ILLUSTRATIVE PURPOSES. THE FINAL DETAIL OF STREETScape IMPROVEMENTS WILL BE SELECTED DURING DETAILED DESIGN PHASES OF WORK AND CONFIRMED WITH APPLICABLE DESIGN AND PERMITTING STANDARDS.



STND. GW BRICK PAVERS



STONE



METAL RAIL AT TREE BOX



DC SINGLE GLOBE

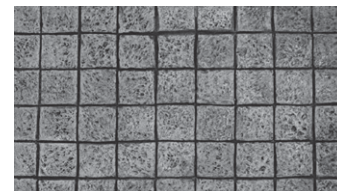
CLEAR VISION GLASS W/ LOW-E COATING

CLEAR VISION GLASS

METAL PANEL



STONE BASE



4"x 4" STND. DDOT GRANITE COBBLE PAVERS



3' X 3' SCORED CONCRETE

NOTE: SIGNAGE SHOWN FOR ILLUSTRATIVE PURPOSES ONLY. QUANTITY, LOCATION, SWING, AND TYPE OF RETAIL DOORS SUBJECT TO CHANGE UPON TENANT BUILD-OUT. STREETS-CAPE DETAILS ARE SHOWN IN CONCEPT FOR ILLUSTRATIVE PURPOSES. THE FINAL DETAIL OF STREETScape IMPROVEMENTS WILL BE SELECTED DURING DETAILED DESIGN PHASES OF WORK AND CONFIRMED WITH APPLICABLE DESIGN AND PERMITTING STANDARDS.



PREVIOUS OP SUBMISSION (4' PROJECTIONS ONLY)



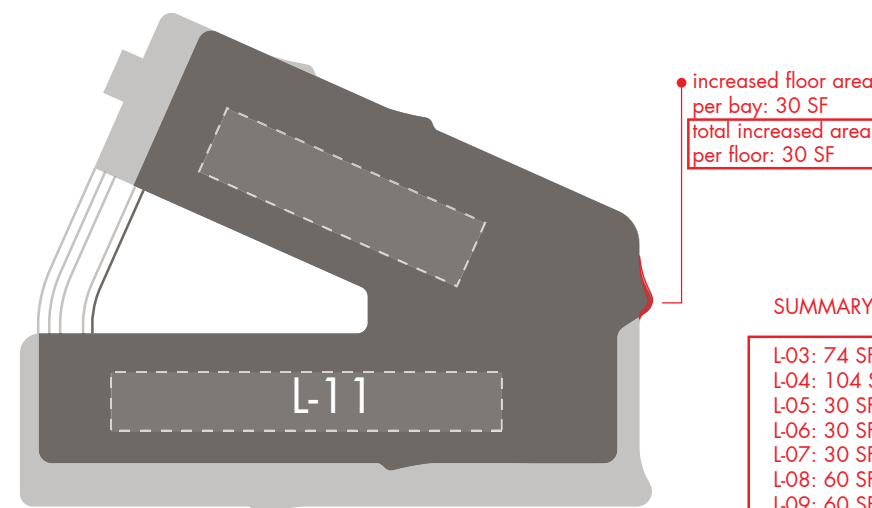
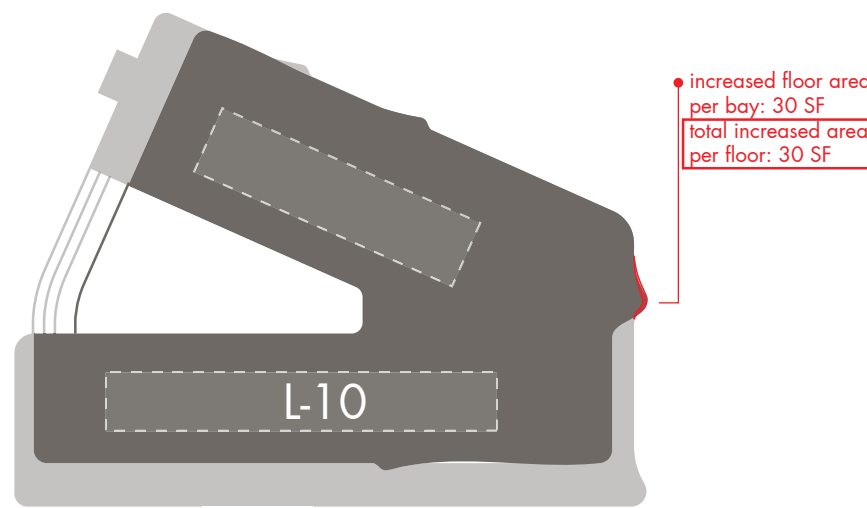
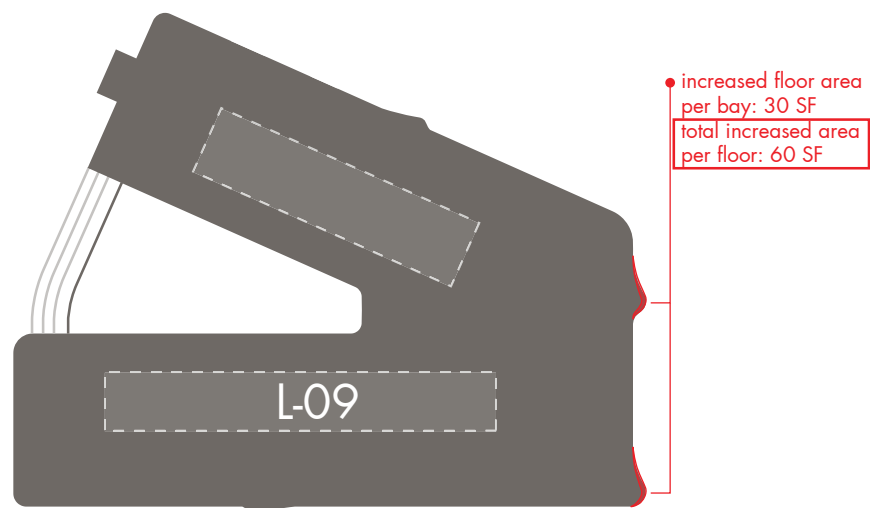
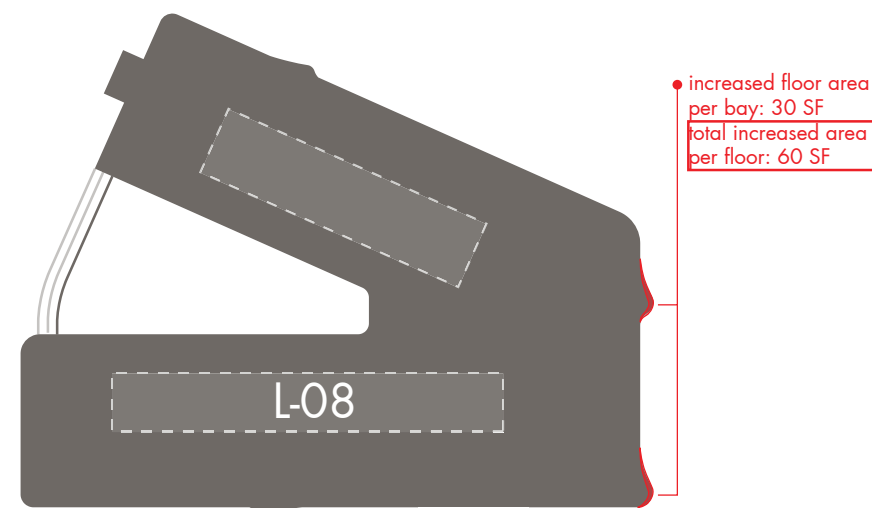
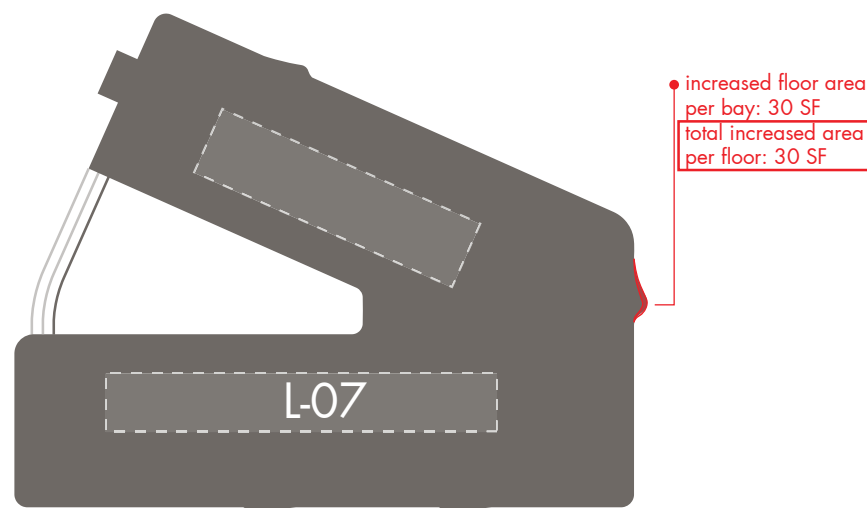
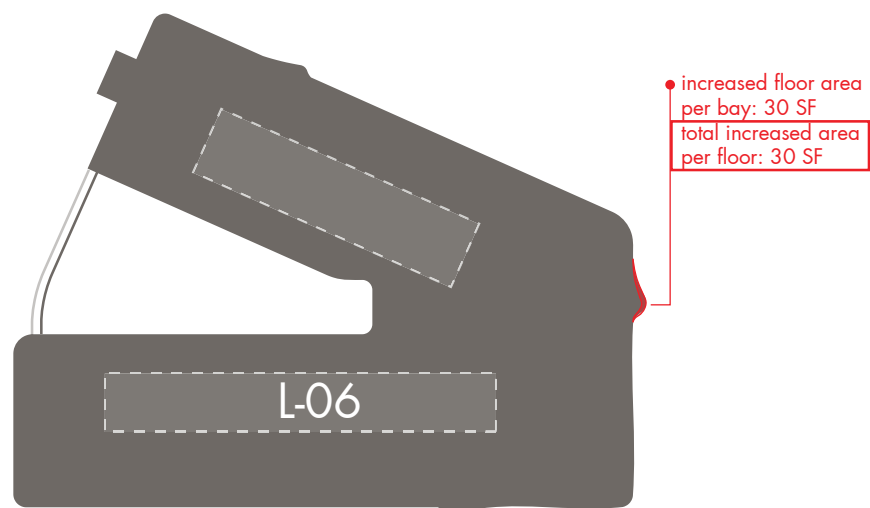
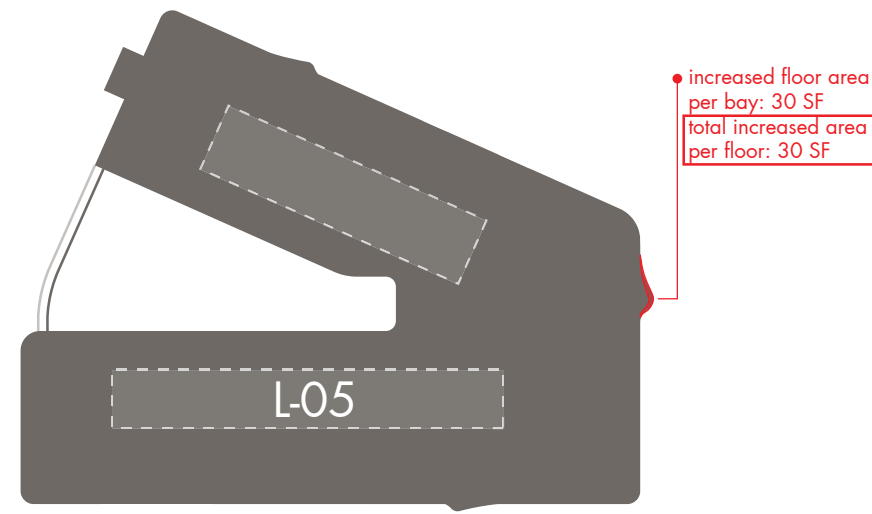
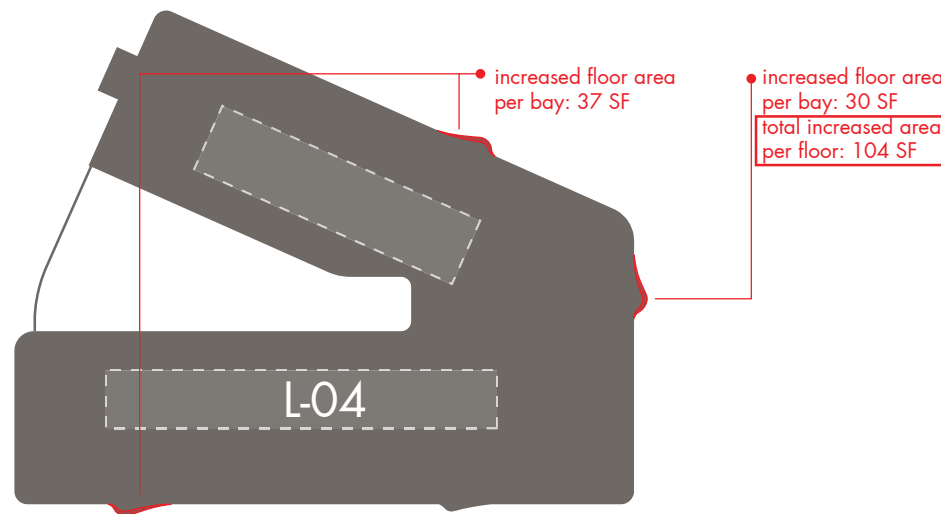
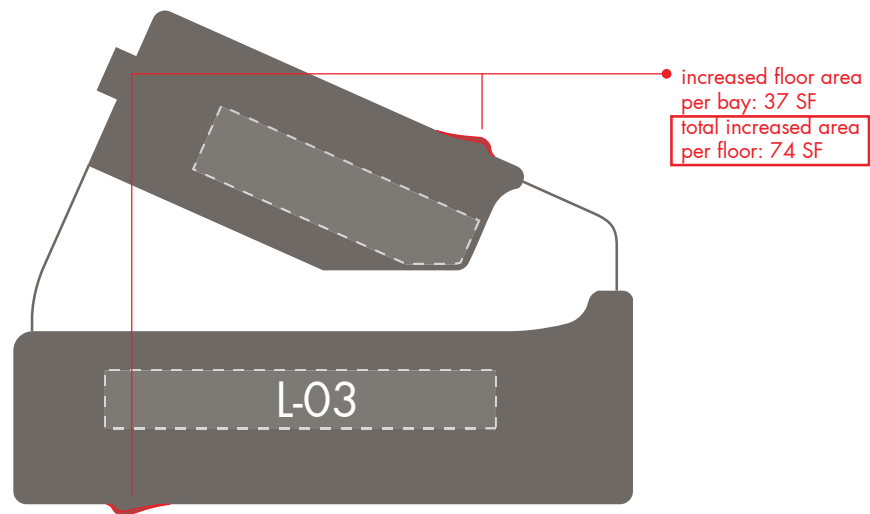
CURRENT DESIGN (4' AND 6' PROJECTIONS)



PREVIOUS OP SUBMISSION (4' PROJECTIONS ONLY)

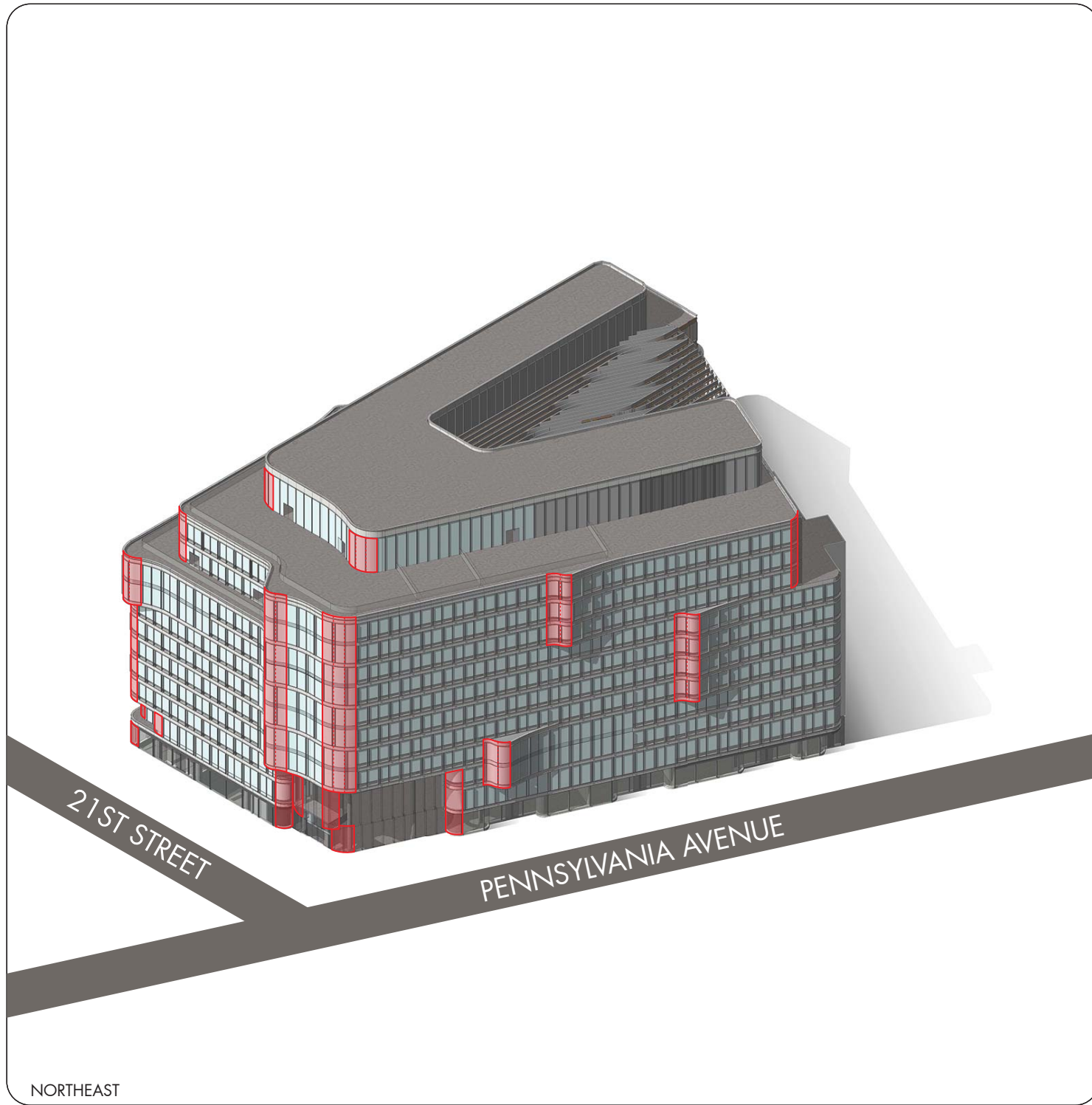
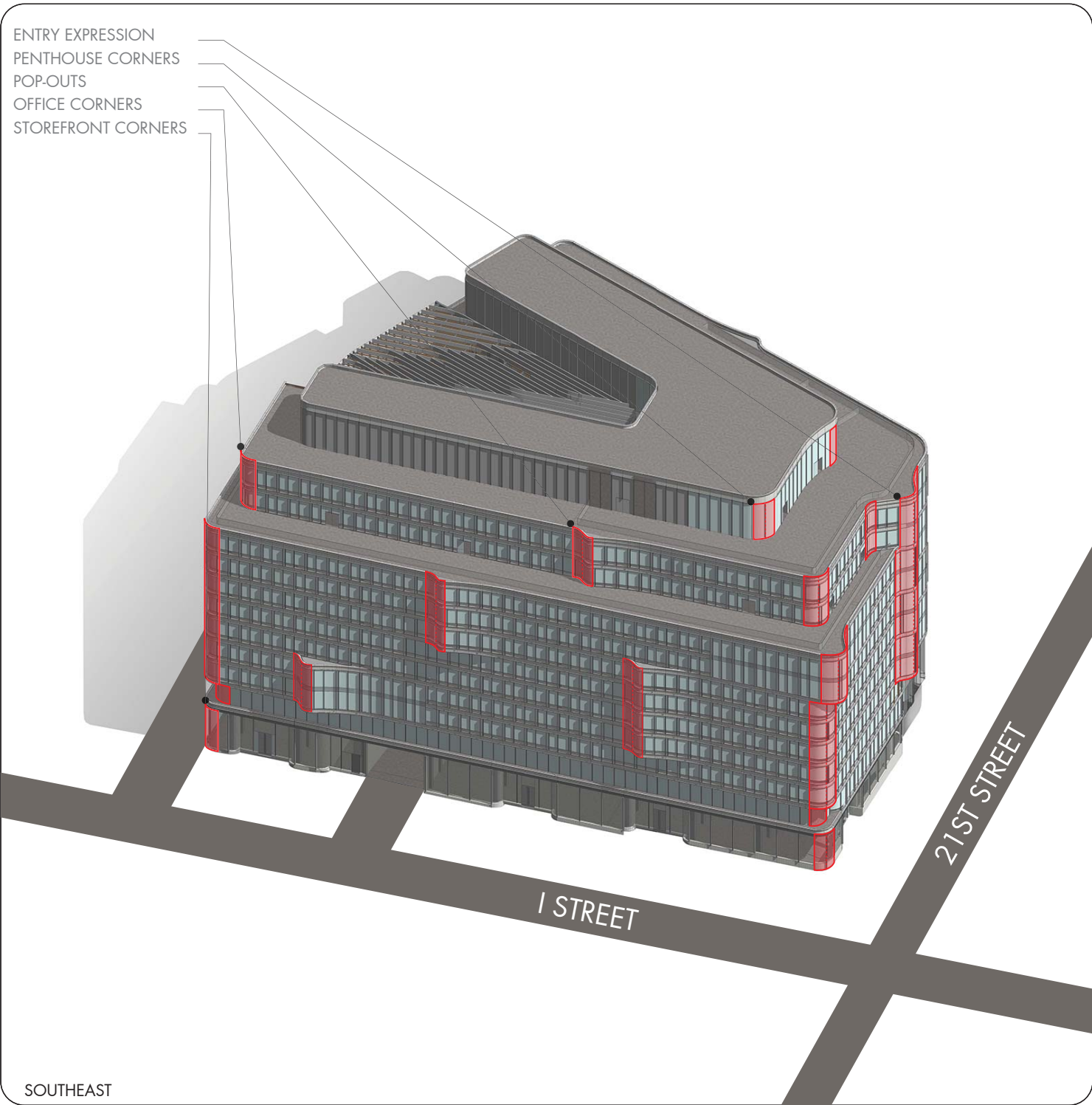


CURRENT DESIGN (4' AND 6' PROJECTIONS)

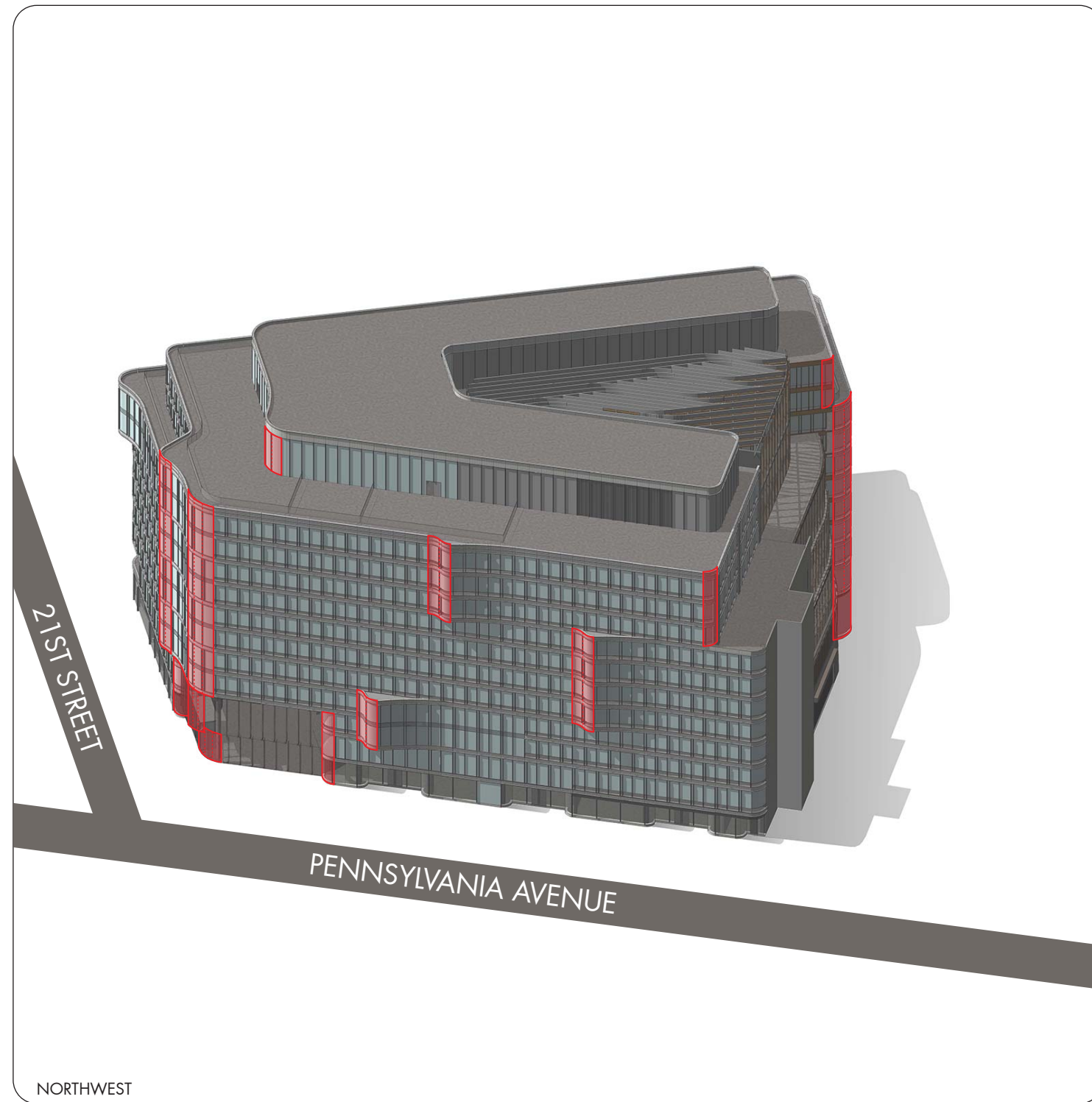
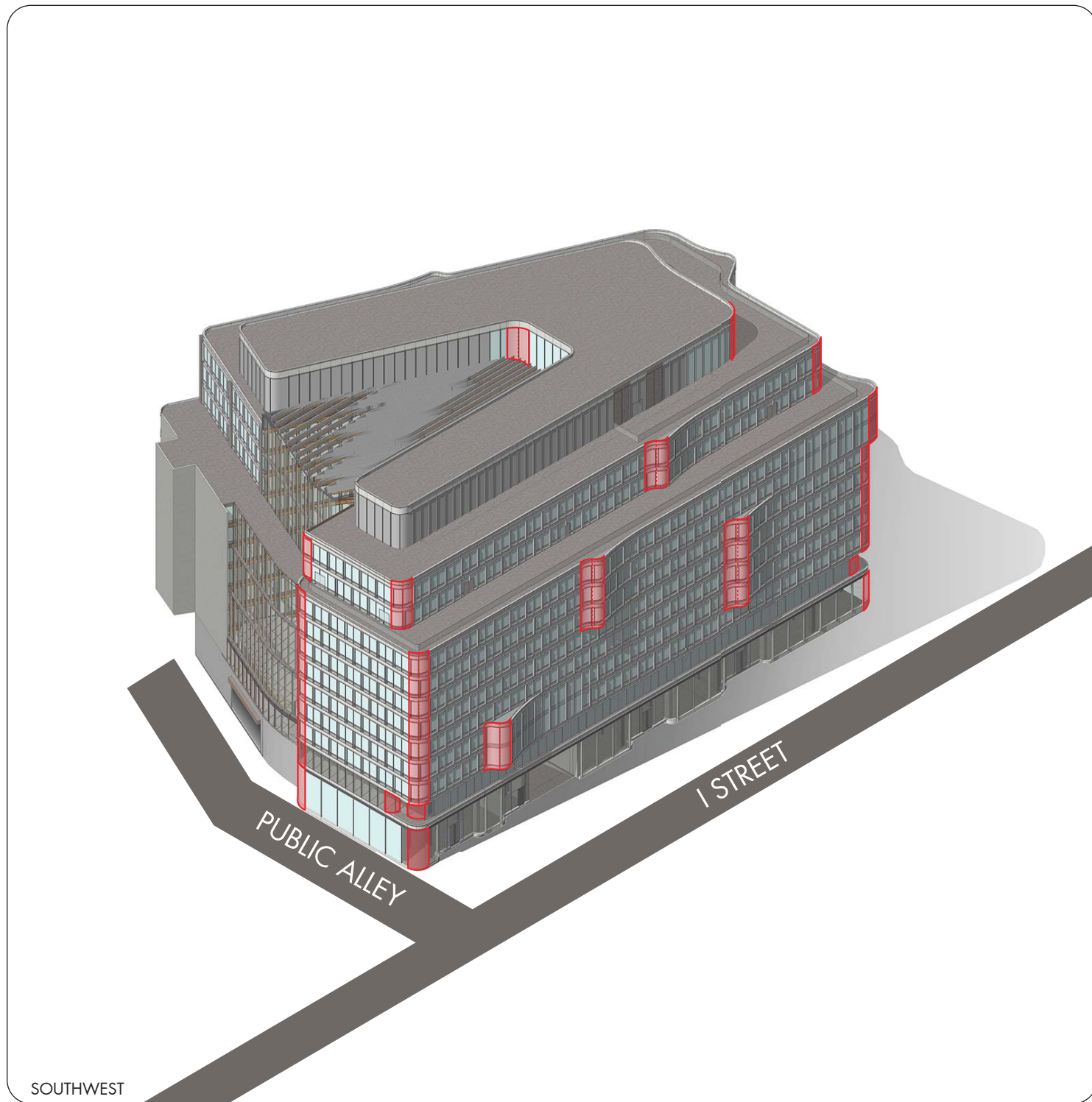


SUMMARY

L-03: 74 SF
L-04: 104 SF
L-05: 30 SF
L-06: 30 SF
L-07: 30 SF
L-08: 60 SF
L-09: 60 SF
L-10: 30 SF
L-11: 30 SF
TOTAL INCREASED BUILDING AREA: 448 SF



■ REGIONS OF CURVED GLASS



■ REGIONS OF CURVED GLASS

