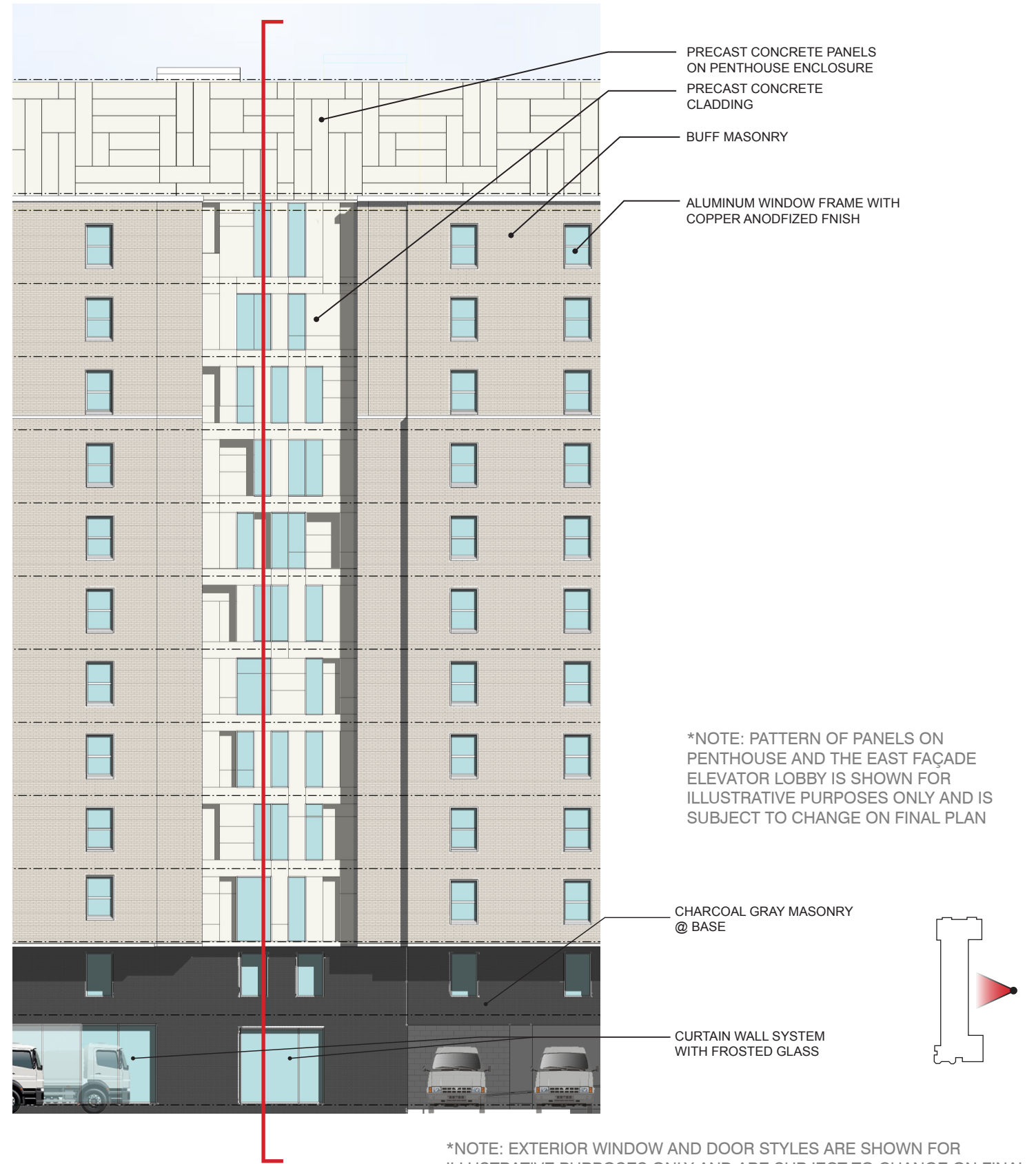


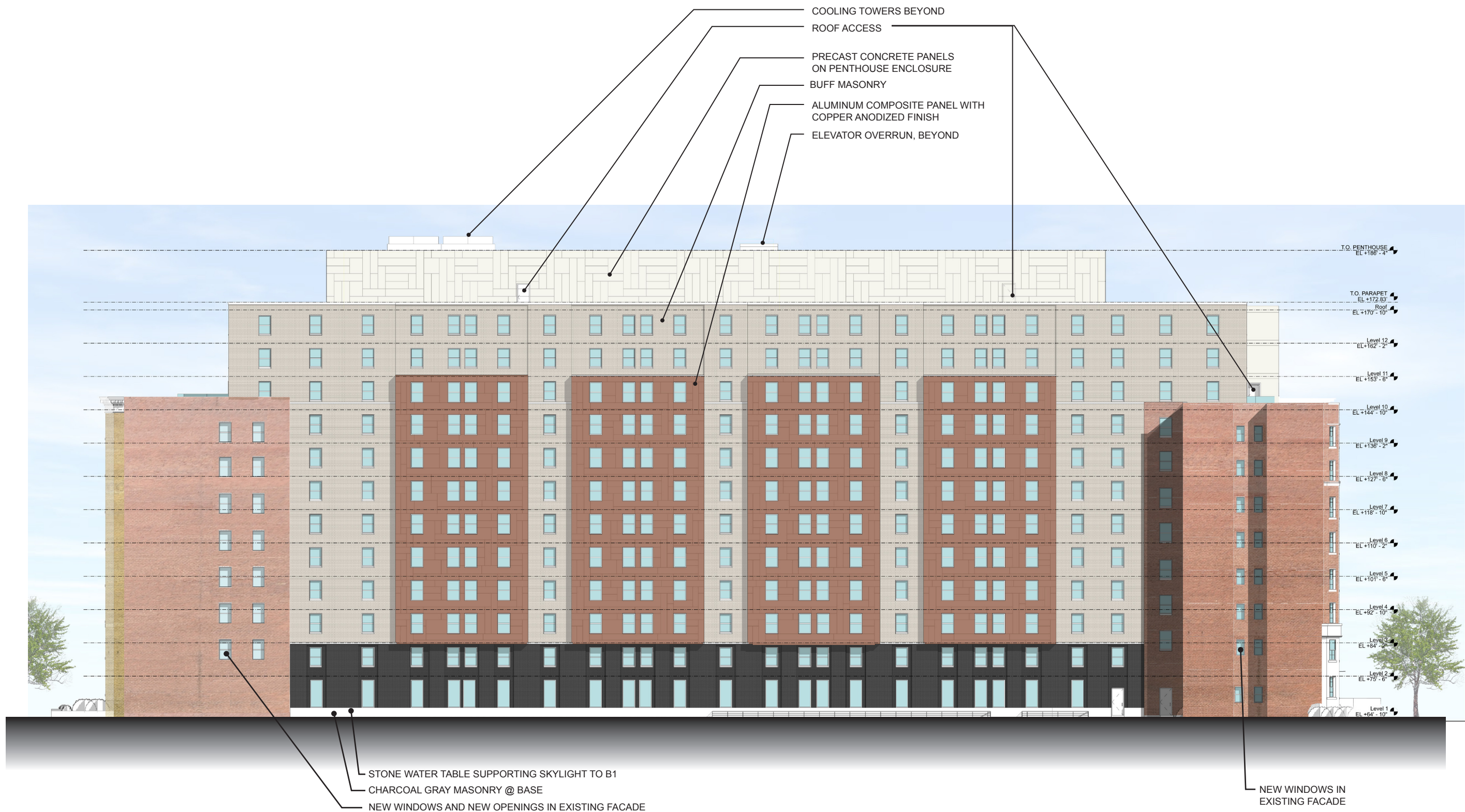


BUILDING SECTION @ EAST FACADE



ENLARGED ELEVATION @ EAST FACADE

EAST FACADE ELEVATOR LOBBY DETAIL



*NOTE: EXTERIOR WINDOW AND DOOR STYLES ARE SHOWN FOR ILLUSTRATIVE PURPOSES ONLY AND ARE SUBJECT TO CHANGE ON FINAL PLANS THROUGH GUIDANCE OF THE HISTORIC PRESERVATION OFFICE

*NOTE: PATTERN OF PANELS ON PENTHOUSE AND WEST FAÇADE BAYS IS SHOWN FOR ILLUSTRATIVE PURPOSES ONLY AND IS SUBJECT TO CHANGE ON FINAL PLAN

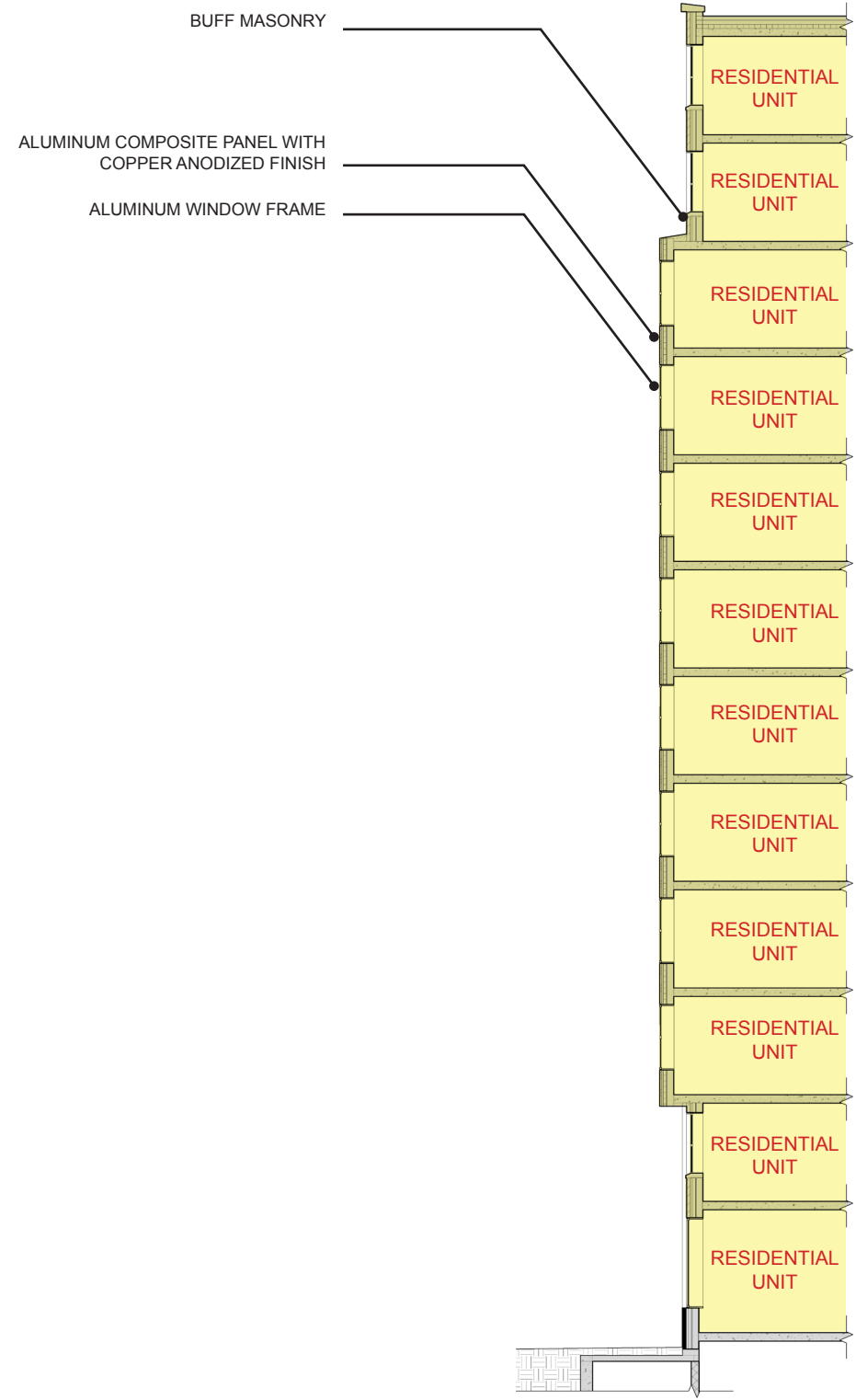
ELEVATION - WEST FACADE

A-32

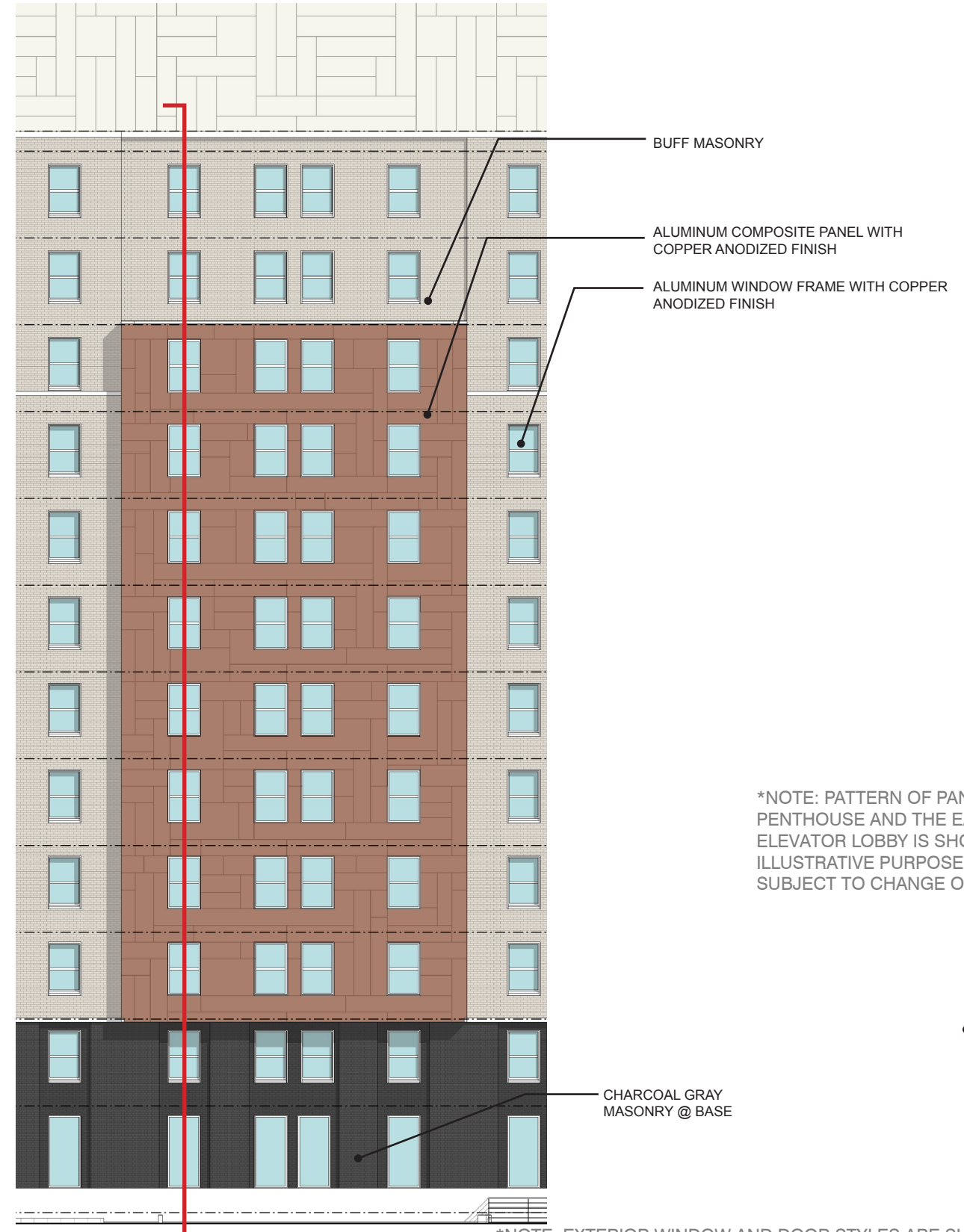
APRIL 30, 2013

THE GEORGE WASHINGTON UNIVERSITY FOGGY BOTTOM CAMPUS
 SITE 77A RESIDENCE HALL
 Second Stage PUD Application
 Case No. 06-11J/06-12J

AYERS
 SAINT
 GROSS



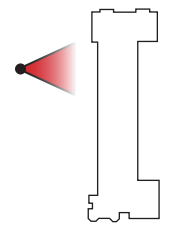
BUILDING SECTION @ WEST FACADE



ENLARGED ELEVATION @ WEST FACADE

*NOTE: PATTERN OF PANELS ON PENTHOUSE AND THE EAST FAÇADE ELEVATOR LOBBY IS SHOWN FOR ILLUSTRATIVE PURPOSES ONLY AND IS SUBJECT TO CHANGE ON FINAL PLAN

*NOTE: EXTERIOR WINDOW AND DOOR STYLES ARE SHOWN FOR ILLUSTRATIVE PURPOSES ONLY AND ARE SUBJECT TO CHANGE ON FINAL PLANS THROUGH GUIDANCE OF THE HISTORIC PRESERVATION OFFICE



WEST FACADE BAY DETAIL