



LAFAYETTE HALL

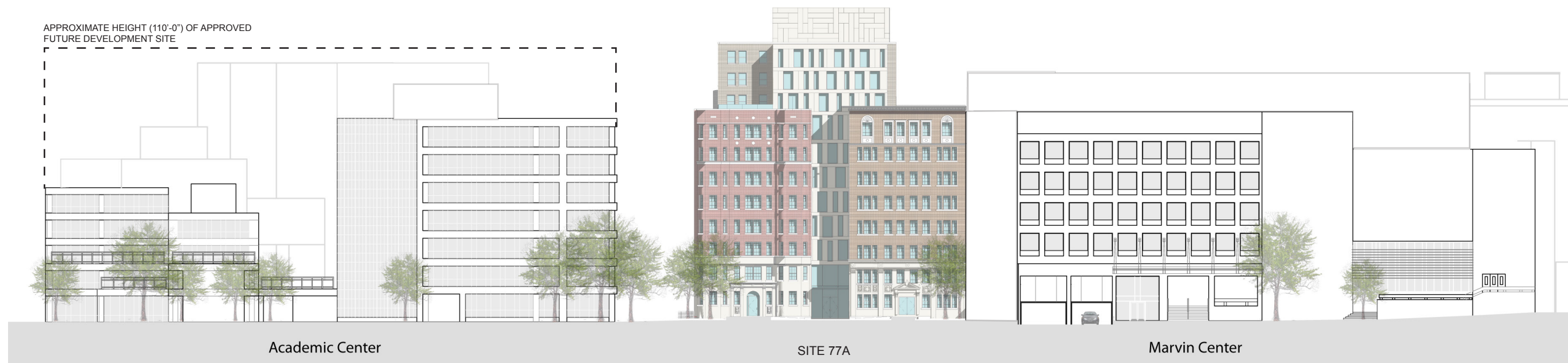
MARVIN CENTER

SITE 77A

ACADEMIC CENTER

837 22nd STREET

I STREET CONTEXT ELEVATIONS



Academic Center

SITE 77A

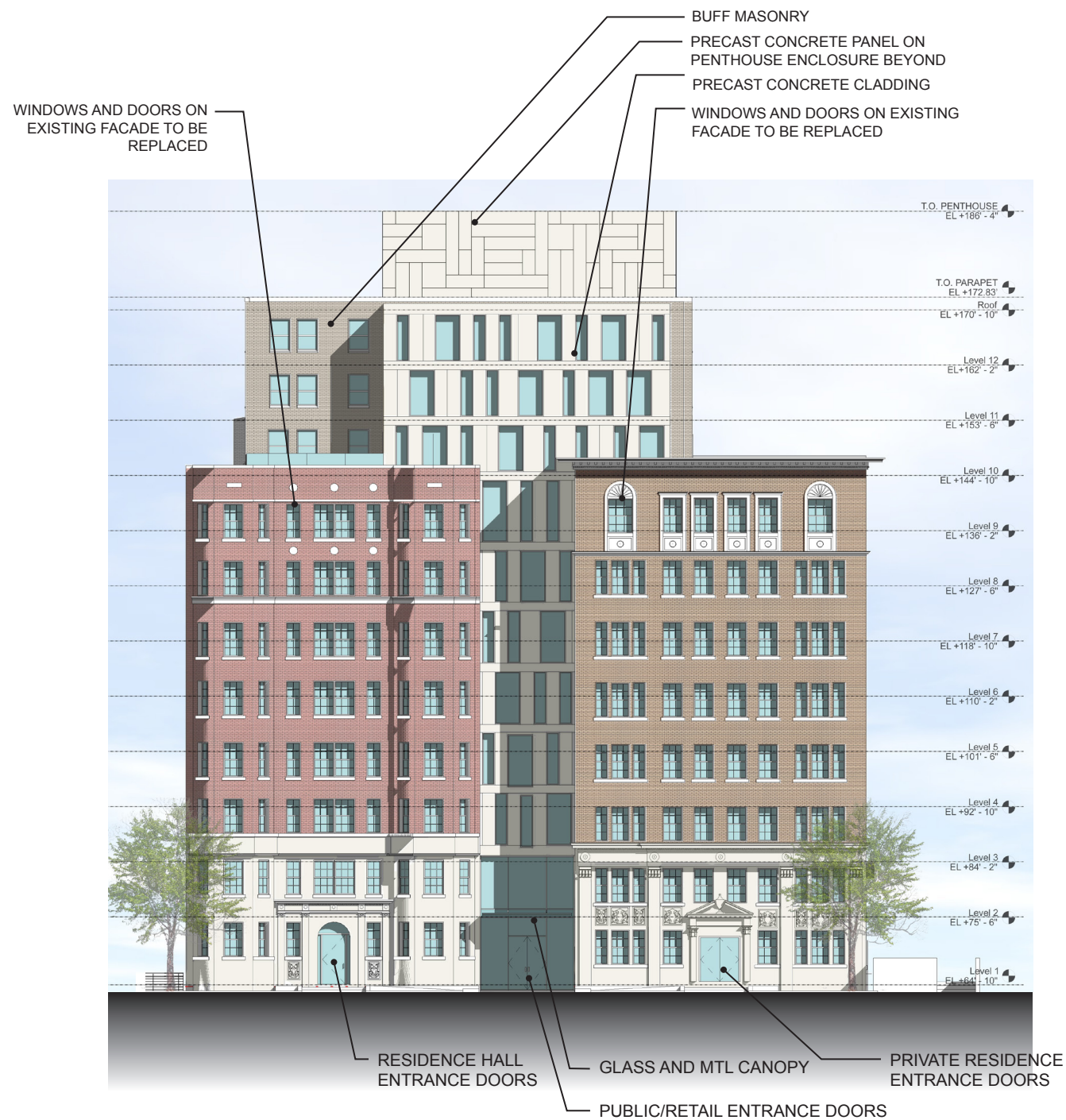
Marvin Center

H STREET CONTEXT ELEVATIONS

*NOTE: EXTERIOR WINDOW AND DOOR STYLES ARE SHOWN FOR ILLUSTRATIVE PURPOSES ONLY AND ARE SUBJECT TO CHANGE ON FINAL PLANS THROUGH GUIDANCE OF THE HISTORIC PRESERVATION OFFICE

*NOTE: EXTERIOR RETAIL SIGNAGE ON H AND I STREETS TO BE DETERMINED BY FUTURE TENANT NEEDS AND MAY INCLUDE BUT IS NOT LIMITED TO FREESTANDING SIGNAGE, BUILDING MOUNTED SIGNAGE, SIGNAGE ON WINDOW AWNINGS, AND SIGNAGE WITHIN WINDOW OPENINGS SUBJECT TO HPO AND DDOT APPROVAL AS WELL AS OTHER APPLICABLE PERMITTING STANDARDS.

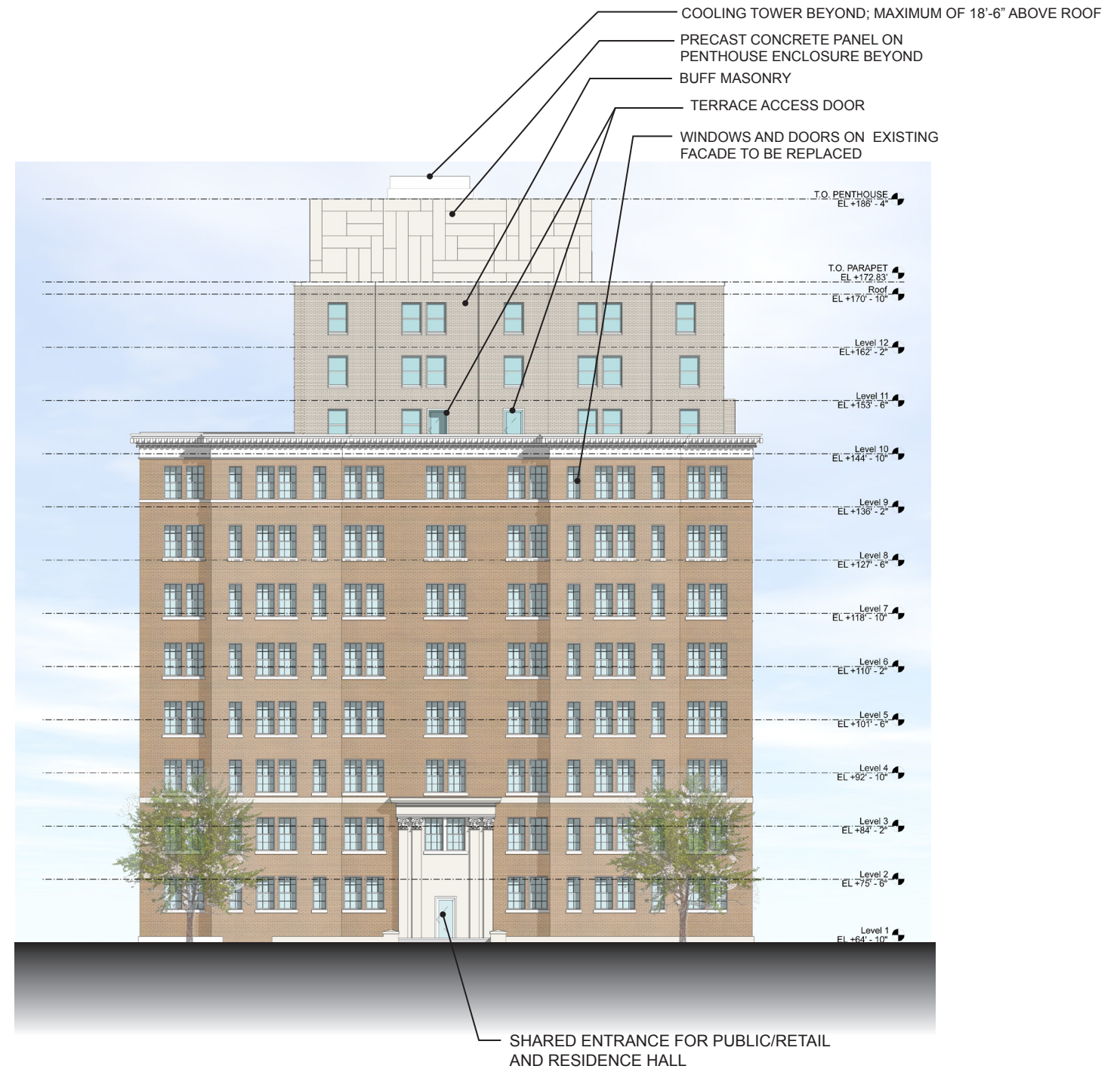
CONTEXT ELEVATIONS



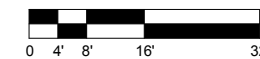
ELEVATION - SOUTH FACADE

*NOTE: EXTERIOR WINDOW AND DOOR STYLES ARE SHOWN FOR ILLUSTRATIVE PURPOSES ONLY AND ARE SUBJECT TO CHANGE ON FINAL PLANS THROUGH GUIDANCE OF THE HISTORIC PRESERVATION OFFICE

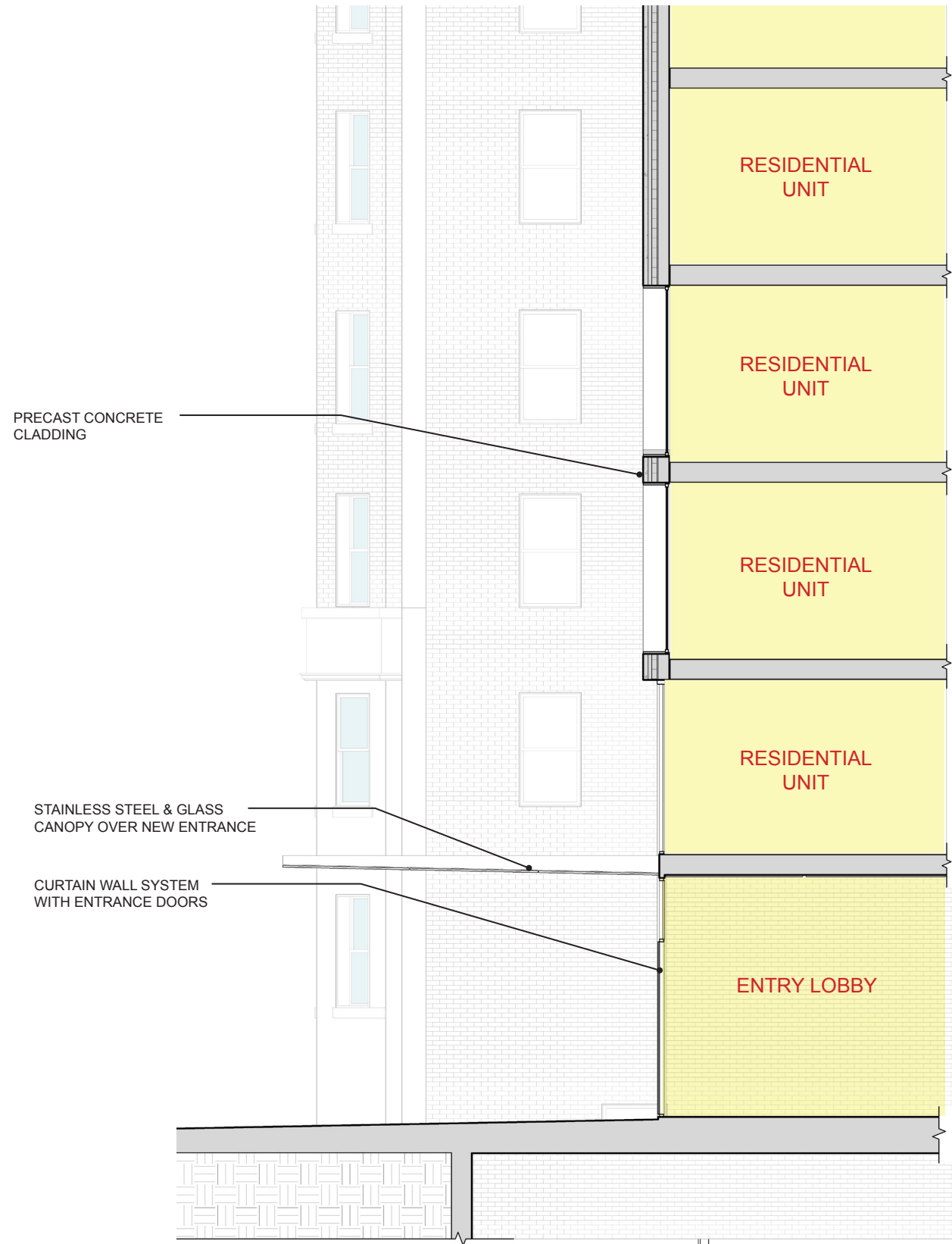
*NOTE: PATTERN OF PANELS ON PENTHOUSE IS SHOWN FOR ILLUSTRATIVE PURPOSES ONLY AND IS SUBJECT TO CHANGE ON FINAL PLAN



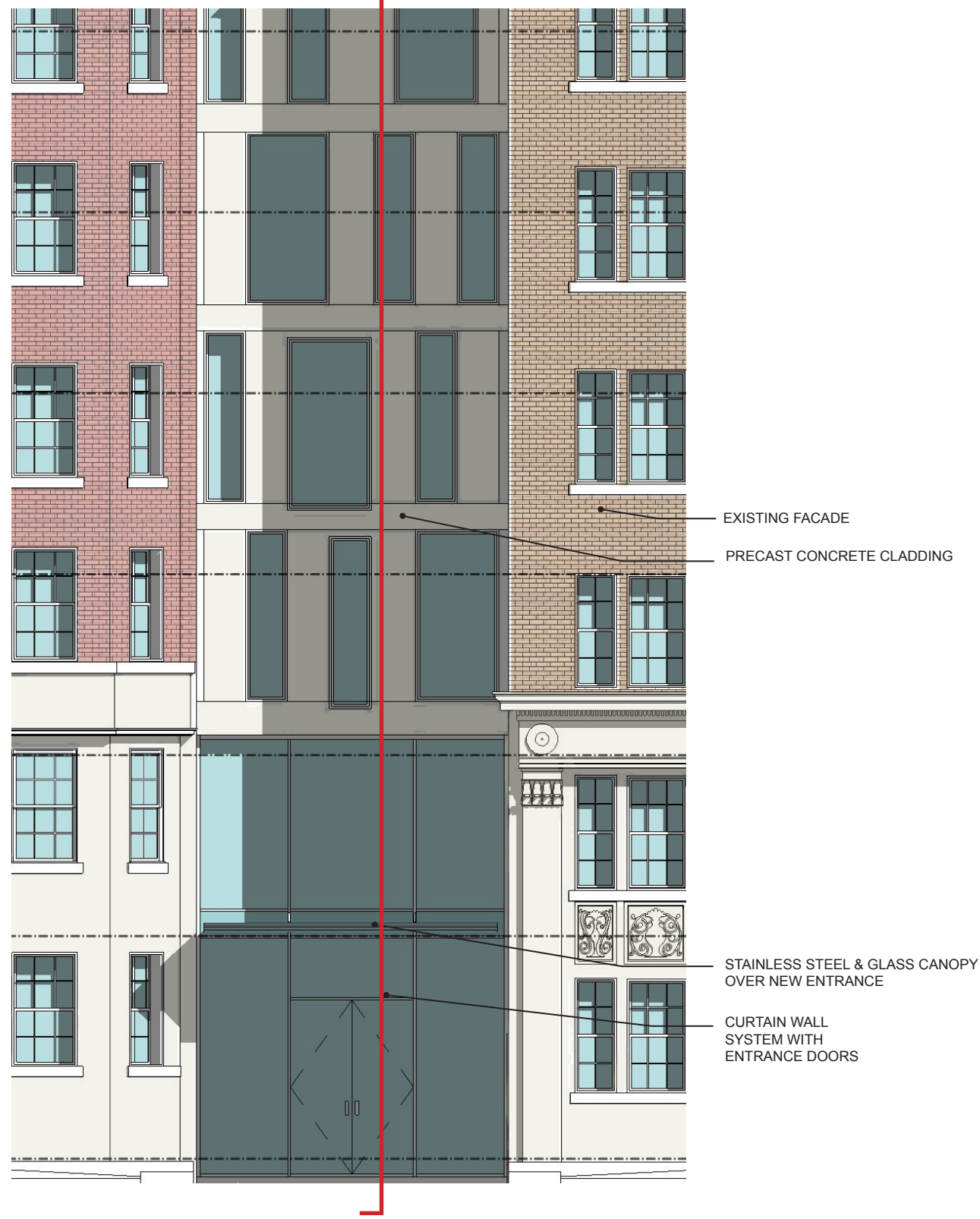
ELEVATION - NORTH FACADE



NORTH-SOUTH FACADE ELEVATIONS

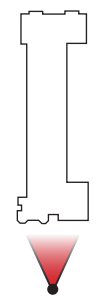


BUILDING SECTION @ EAST FACADE

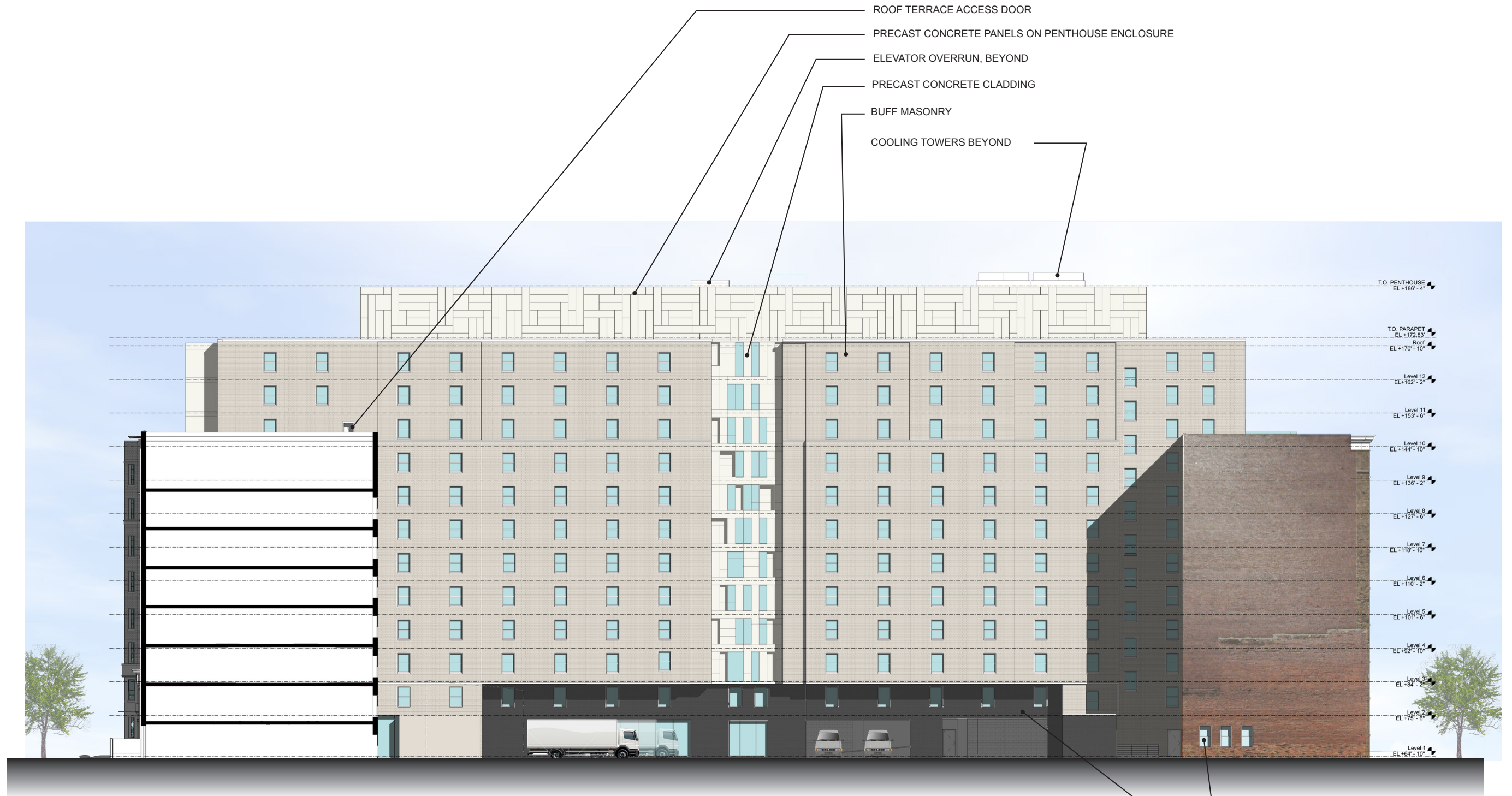


ENLARGED ELEVATION @ EAST FACADE

*NOTE: EXTERIOR WINDOW AND DOOR STYLES ARE SHOWN FOR ILLUSTRATIVE PURPOSES ONLY AND ARE SUBJECT TO CHANGE ON FINAL PLANS THROUGH GUIDANCE OF THE HISTORIC PRESERVATION OFFICE



SOUTH FACADE ENTRY DETAIL



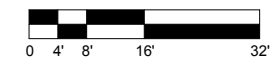
*NOTE: QUANTITY, LOCATION, SWING AND TYPE OF ROOF ACCESS DOORS IS SUBJECT TO CHANGE.

*NOTE: EXTERIOR WINDOW AND DOOR STYLES ARE SHOWN FOR ILLUSTRATIVE PURPOSES ONLY AND ARE SUBJECT TO CHANGE ON FINAL PLANS THROUGH GUIDANCE OF THE HISTORIC PRESERVATION OFFICE

*NOTE: PATTERN OF PANELS ON PENTHOUSE AND THE EAST FAÇADE ELEVATOR LOBBY IS SHOWN FOR ILLUSTRATIVE PURPOSES ONLY AND IS SUBJECT TO CHANGE ON FINAL PLAN

NEW WINDOWS & OPENINGS @ EXISTING MASONRY

CHARCOAL GRAY MASONRY @ BASE



ELEVATION - EAST FACADE

A-30

APRIL 30, 2013

THE GEORGE WASHINGTON UNIVERSITY FOGGY BOTTOM CAMPUS
 SITE 77A RESIDENCE HALL
 Second Stage PUD Application
 Case No. 06-11J/06-12J

AYERS
 SAINT
 GROSS