

DUST CONTROL NOTES:

- THE CONTRACTOR SHALL CONDUCT OPERATIONS AND MAINTAIN THE PROJECT SITE AS TO MINIMIZE THE CREATION AND DISPERSION OF DUST. DUST CONTROL SHALL BE USED THROUGHOUT THE WORK AT THE SITE.
- THE CONTRACTOR MUST PROVIDE CLEAN WATER, FREE FROM SALT, OIL AND OTHER DELETERIOUS MATERIAL TO BE USED FOR ON-SITE DUST CONTROL.
- THE CONTRACTOR SHALL SUPPLY WATER SPRAYING EQUIPMENT CAPABLE OF ACCESSING ALL WORK AREAS.
- THE CONTRACTOR SHALL IMPLEMENT STRICT DUST CONTROL MEASURES DURING ACTIVE CONSTRUCTION PERIODS ON-SITE. THESE CONTROL MEASURES WILL GENERALLY CONSIST OF WATER APPLICATIONS THAT SHALL BE APPLIED A MINIMUM OF ONCE PER DAY DURING DRY WEATHER OR MORE OFTEN AS REQUIRED TO PREVENT DUST EMISSIONS.
- FOR WATER APPLICATION TO UNDISTURBED SOIL SURFACES, THE CONTRACTOR SHALL:
 - APPLY WATER WITH EQUIPMENT CONSISTING OF TANK, SPRAY BAR, PUMP WITH DISCHARGE PRESSURE GAUGE.
 - ARRANGE SPRAY BAR HEIGHT, NOZZLE SPACING AND SPRAY PATTERN TO PROVIDE COMPLETE COVERAGE OF GROUND WITH WATER.
 - DISPERSE WATER THROUGH NOZZLES ON SPRAY BAR AT 20 PSI (137.8 K PA) MINIMUM. KEEP AREAS DAMP WITHOUT CREATING NUISANCE CONDITIONS SUCH AS PONDING.
- FOR WATER APPLICATION TO SOIL SURFACES DURING DEMOLITION AND/OR EXCAVATION, THE CONTRACTOR SHALL:
 - APPLY WATER WITH EQUIPMENT CONSISTING OF A TANK, PUMP WITH DISCHARGE GAUGE, HOSES AND MIST NOZZLES.
 - LOCATE TANK AND SPRAYING EQUIPMENT SO THAT THE ENTIRE EXCAVATION AREA CAN BE MISTED WITHOUT INTERFERING WITH DEMOLITION AND/OR EXCAVATION EQUIPMENT OR OPERATIONS. KEEP AREAS DAMP WITHOUT CREATING NUISANCE CONDITIONS SUCH AS PONDING.
 - APPLY WATER SPRAY IN A MANNER TO PREVENT MOVEMENT OF SPRAY BEYOND SITE BOUNDARIES.

CONSTRUCTION AND STABILIZATION SEQUENCE:

- INSTALL SEDIMENT AND EROSION CONTROL MEASURES INCLUDING STABILIZED TREE PROTECTION, AND SILT FENCE AS INDICATED ON SHEET C-103. SEE SHEET C-503 FOR SEDIMENTATION AND EROSION CONTROL DETAILS.
- SEDIMENT CONTROL MEASURES SHALL BE INSPECTED AND APPROVED BY THE INSPECTOR PRIOR TO COMMENCING ANY OTHER LAND DISTURBING ACTIVITIES.
- REMOVE ITEMS AS INDICATED ON DEMOLITION PLAN.
- INSTALL SITE IMPROVEMENTS AS INDICATED ON CONSTRUCTION DOCUMENTS FOR THE PROPOSED BUILDING.
- AT THE COMPLETION OF CONSTRUCTION AND AFTER THE INSPECTOR'S APPROVAL, ALL TEMPORARY SEDIMENTATION AND EROSION CONTROL MEASURES SHALL BE REMOVED.

SEDIMENTATION EROSION CONTROL NOTE:

THE APPLICANT MUST NOTIFY THE DEPARTMENT OF HEALTH BY PHONE (202-535-2250) AT LEAST 24 HOURS PRIOR TO THE START OF GRADING ACTIVITY AND WITHIN (2) WEEKS AFTER COMPLETION OF PROJECT TO REQUEST INSPECTION. IF THERE IS NEED TO MAKE CHANGES OR MODIFICATIONS IN THE APPROVED DESIGN, DEPARTMENT OF HEALTH MUST BE NOTIFIED IMMEDIATELY.

SCHEDULE AND HOLD PRE-CONSTRUCTION MEETING WITH THE SEDIMENT CONTROL INSPECTOR 48 HOURS PRIOR TO ANY LAND DISTURBING ACTIVITY. CALL 202-535-2977 FOR APPOINTMENT.

NOTE:

- THE CONTRACTOR SHALL BE RESPONSIBLE FOR DESIGN OF SHEETING AND SHORING AND SUPPORT OF EXISTING UTILITIES AND ADJACENT STRUCTURES. SHORING, BRACING, AND UNDERPINNING DESIGNED BY THE CONTRACTOR'S STRUCTURAL ENGINEER LICENSED IN THE DISTRICT OF COLUMBIA SHALL BE PROVIDED AS NECESSARY TO ENSURE THEIR SUPPORT.
- PROVIDE SILT FENCE AT PERIMETER OF EXCAVATION AREA TO REMAIN IN PLACE UNTIL BELOW GRADE EXCAVATION HAS BEGUN UNLESS OTHERWISE APPROVED BY THE INSPECTOR.
- CONTRACTOR TO PROVIDE ON SITE APPROVED STAMPED AND SIGNED SEDIMENTATION AND EROSION CONTROL DRAWINGS BY DEPARTMENT OF ENVIRONMENT

CONSTRUCTION DATES:

- THE PROPOSED DEMOLITION WORK DUE TO COMMENCE NO EARLIER THAN 2013 AND IS ANTICIPATED TO TAKE APPROXIMATELY 24 MONTHS.
- EXACT BEGINNING AND END OF CONSTRUCTION IS TO BE ESTABLISHED BY THE OWNER.

TOTAL AREA OF DISTURBANCE:

TOTAL AREA OF DISTURBANCE: 40,867 SQUARE FEET OR 0.9382 AC

TOTAL VOLUME OF CUT OF BELOW GRADE EXCAVATION:

TOTAL AREA OF EXCAVATION: 33,544 SF / 0.7701 AC
 VOLUME OF CUT: 33,544 SQ.FT. (AREA) X 4.3 FEET (DEPTH)
 27
 VOLUME OF CUT: 53,422 cy +/-

TOTAL VOLUME OF CUT /FILL FOR UTILITIES:

TOTAL AREA OF EXCAVATION: 662 SF
 VOLUME OF CUT: 662 SQ.FT. (AREA) X 7 FEET (DEPTH)
 27
 VOLUME OF CUT AND FILL: 172 cy +/-

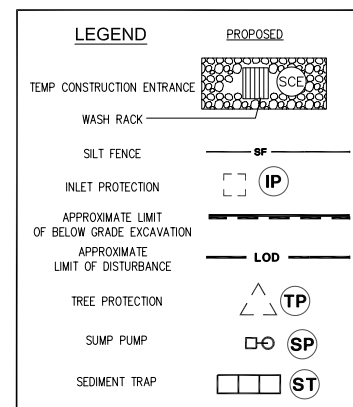
SEDIMENT CONTROL APPROVAL:

PLAN NUMBER: _____
 THIS APPROVAL IS FOR GRADING AND SEDIMENT CONTROL ONLY. PERMITTEE/ CONTRACTOR IS REQUIRED TO CONSTRUCT DESIGN FEATURE SHOWN HEREON. HE SHALL NOTIFY THIS OFFICE AT NUMBER LISTED BELOW AT LEAST 24 HOURS BEFORE START OF GRADING ACTIVITY, AND WITHIN TWO WEEKS AFTER COMPLETION OF PROJECT FOR FINAL INSPECTION.

DATE _____

EROSION AND SEDIMENT CONTROL BRANCH

FOR FURTHER INFORMATION, PLEASE CALL:
 GOVERNMENT OF THE DISTRICT OF COLUMBIA
 DISTRICT DEPARTMENT OF ENVIRONMENT
 WATERSHED PROTECTION DIVISION
 1200 1ST-STREET, NE
 WASHINGTON, D.C.
 TEL NO. (202) 535-2240
 FAX NO. (202) 535-1364



THIS SHEET IS TO BE USED FOR SEDIMENTATION AND EROSION CONTROL PURPOSES ONLY !!

SEDIMENTATION & EROSION CONTROL PLAN

C-02

APRIL 30, 2013

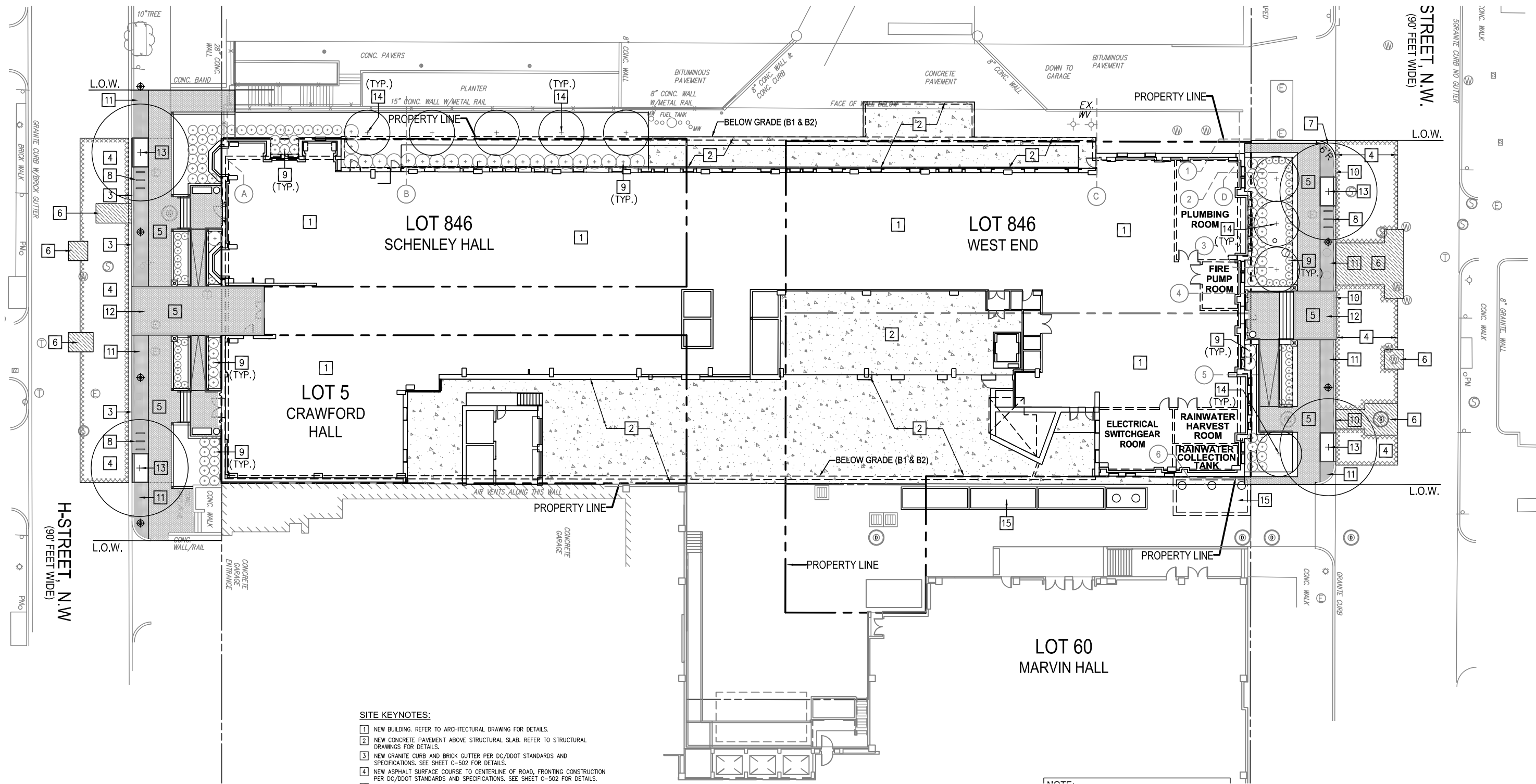
THE GEORGE WASHINGTON UNIVERSITY FOGGY BOTTOM CAMPUS

SITE 77A RESIDENCE HALL

Second Stage PUD Application

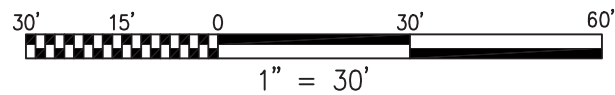
Case No. 06-11J/06-12J

AYERS
SAINT
GROSS



SITE KEYNOTES:

- 1 NEW BUILDING. REFER TO ARCHITECTURAL DRAWING FOR DETAILS.
- 2 NEW CONCRETE PAVEMENT ABOVE STRUCTURAL SLAB. REFER TO STRUCTURAL DRAWINGS FOR DETAILS.
- 3 NEW GRANITE CURB AND BRICK GUTTER PER DC/DDOT STANDARDS AND SPECIFICATIONS. SEE SHEET C-502 FOR DETAILS.
- 4 NEW ASPHALT SURFACE COURSE TO CENTERLINE OF ROAD, FRONTING CONSTRUCTION PER DC/DDOT STANDARDS AND SPECIFICATIONS. SEE SHEET C-502 FOR DETAILS.
- 5 NEW BRICK SIDEWALK (HERRINGBONE PATTERN) PER GWJ STANDARDS AND SPECIFICATIONS REFER TO LANDSCAPE DRAWINGS FOR DETAILS.
- 6 NEW ASPHALT PAVEMENT WITH CONCRETE BASE PER DC/DDOT STANDARDS AND SPECIFICATIONS. SEE SHEET C-502 FOR DETAILS.
- 7 NEW CONCRETE DRIVEWAY ENTRANCE WITH 6'-0" RADIUS PER DC/DDOT STANDARDS AND SPECIFICATIONS. SEE SHEET C-502 FOR DETAILS.
- 8 NEW BICYCLE RACK. REFER TO LANDSCAPE DRAWINGS FOR DETAILS.
- 9 NEW SHRUBS. REFER TO LANDSCAPE DRAWINGS FOR SPECIES AND DETAILS.
- 10 NEW GRANITE CURB PER DC/DDOT STANDARDS AND SPECIFICATIONS. SEE SHEET C-502 FOR DETAILS.
- 11 NEW 4"x4" TUMBLED CONCRETE PERMEABLE PAVER OVER 12" CLEAN STONE RESERVOIR WITH SUBSURFACE DRAINAGE. REFER TO LANDSCAPE DRAWINGS FOR DETAILS.
- 12 NEW CAMPUS STANDARD BRICK SIDEWALK PAVING OVER REINFORCED CONCRETE SLAB WITH BITUMINOUS SETTING BED. REFER TO LANDSCAPE DRAWINGS FOR DETAILS.
- 13 NEW STREET TREE. REFER TO LANDSCAPE DRAWINGS FOR SPECIES AND DETAILS.
- 14 NEW ORNAMENTAL TREE. REFER TO LANDSCAPE DRAWING FOR SPECIES AND DETAILS.
- 15 NEW CONCRETE PAVEMENT. SEE SHEET C-502 FOR DETAILS.



SITE PLAN