

PERSPECTIVE VIEW - I STREET LOOKING SOUTHEAST

THE GEORGE WASHINGTON UNIVERSITY FOGGY BOTTOM CAMPUS
SITE 77A RESIDENCE HALL
 Second Stage PUD Application
 Case No. 06-11J/06-12J



LEED-NC v3.0 Preliminary Project Checklist

George Washington University - Site 77A Feasibility Study
Washington, DC - Site 77A bounded by H Street, I Street, 21st Street, and 22nd Street

Yes ? No

17	6	3	Sustainable Sites		26 Points
Y			Prereq 1	Construction Activity Pollution F	Required
1			Credit 1	Site Selection	1
5			Credit 2	Development Density & Commu	5
		1	Credit 3	Brownfield Redevelopment	1
6			Credit 4.1	Alternative Transportation, Publi	6
	1		Credit 4.2	Alternative Transportation, Bicyc	1
3			Credit 4.3	Alternative Transportation, Low-l	3
	2		Credit 4.4	Alternative Transportation, Parki	2
	1		Credit 5.1	Site Development, Protect of Res	1
		1	Credit 5.2	Site Development, Maximize Ope	1
	1		Credit 6.1	Stormwater Design, Quantity Cor	1
	1		Credit 6.2	Stormwater Design, Quality Cont	1
1			Credit 7.1	Heat Island Effect, Non-Roof	1
1			Credit 7.2	Heat Island Effect, Roof	1
		1	Credit 8	Light Pollution Reduction	1

6	2	2	Water Efficiency		10 Points
Y			Prereq 1	Water Use Reduction, 20% Redu	Required
4			Credit 1	Water Efficient Landscaping	2 to 4
		2	Credit 2	Innovative Wastewater Technolc	2
2	2		Credit 3	Water Use Reduction	2 to 4

12	13	10	Energy & Atmosphere		35 Points
Y			Prereq 1	Fundamental Commissioning of	Required
Y			Prereq 2	Minimum Energy Performance	Required
Y			Prereq 3	Fundamental Refrigerant Manag	Required
8	11		Credit 1	Optimize Energy Performance	1 to 19
		7	Credit 2	On-Site Renewable Energy	1 to 7
2			Credit 3	Enhanced Commissioning	2
2			Credit 4	Enhanced Refrigerant Managem	2
		3	Credit 5	Measurement & Verification	3
	2		Credit 6	Green Power	2

5	4	5	Materials & Resources		14 Points
Y			Prereq 1	Storage & Collection of Recyclal	Required
		3	Credit 1.1	Building Reuse, Maintain Existing	1 to 3
		1	Credit 1.2	Building Reuse, Maintain 50% of	1
2			Credit 2	Construction Waste Managemen	1 to 2
	2		Credit 3	Materials Reuse	1 to 2
1	1		Credit 4	Recycled Content	1 to 2
2			Credit 5	Regional Materials	1 to 2
		1	Credit 6	Rapidly Renewable Materials	1
	1		Credit 7	Certified Wood	1

12	2	1	Indoor Environmental Quality		15 Points
Y			Prereq 1	Minimum IAQ Performance	Required
Y			Prereq 2	Environmental Tobacco Smoke (Required
1			Credit 1	Outdoor Air Delivery Monitoring	1
		1	Credit 2	Increased Ventilation	1
1			Credit 3.1	Construction IAQ Management F	1
1			Credit 3.2	Construction IAQ Management F	1
1			Credit 4.1	Low-Emitting Materials, Adhesiv	1
1			Credit 4.2	Low-Emitting Materials, Paints &	1
1			Credit 4.3	Low-Emitting Materials, Flooring	1
1			Credit 4.4	Low-Emitting Materials, Compos	1
1			Credit 5	Indoor Chemical & Pollutant Sou	1
1			Credit 6.1	Controllability of Systems, Lighti	1
1			Credit 6.2	Controllability of Systems, Therm	1
1			Credit 7.1	Thermal Comfort, Design	1
1			Credit 7.2	Thermal Comfort, Verification	1
	1		Credit 8.1	Daylight & Views, Daylight 75% o	1
	1		Credit 8.2	Daylight & Views, Views for 90%	1

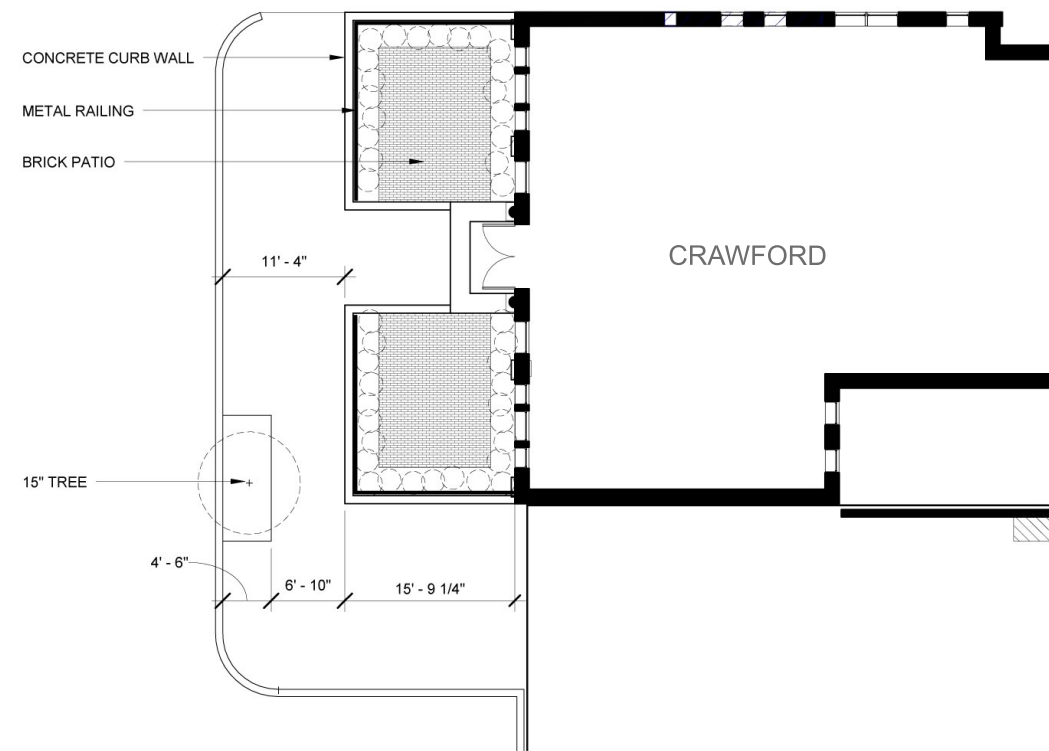
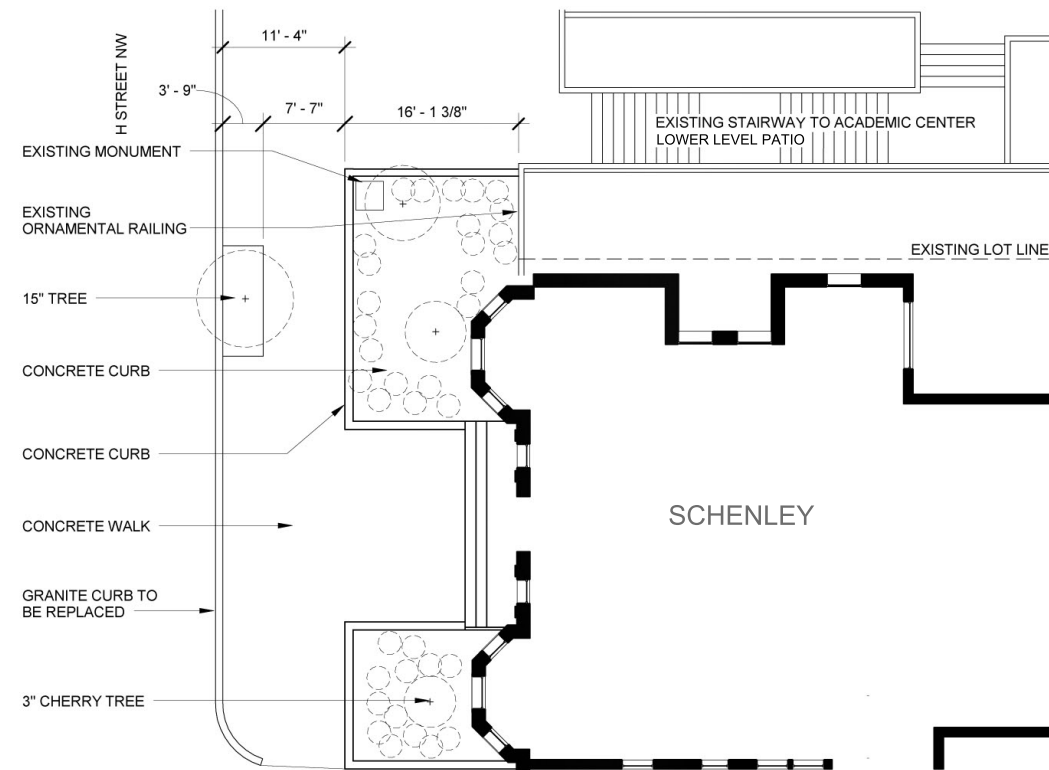
4	2		Innovation & Design Process		6 Points
1			Credit 1.1	Innovation in Design: Provide Sp	1
1			Credit 1.2	Innovation in Design: Provide Sp	1
1			Credit 1.3	Innovation in Design: Provide Sp	1
	1		Credit 1.4	Innovation in Design: Provide Sp	1
	1		Credit 1.5	Innovation in Design: Provide Sp	1
1			Credit 2	LEED® Accredited Professional	1

	3	1	Regional Priority		4 Points
	1		Credit 1.1	Regional Priority: Provide Specifi	1
	1		Credit 1.2	Regional Priority: Provide Specifi	1
	1		Credit 1.3	Regional Priority: Provide Specifi	1
		1	Credit 1.4	Regional Priority: Provide Specifi	1

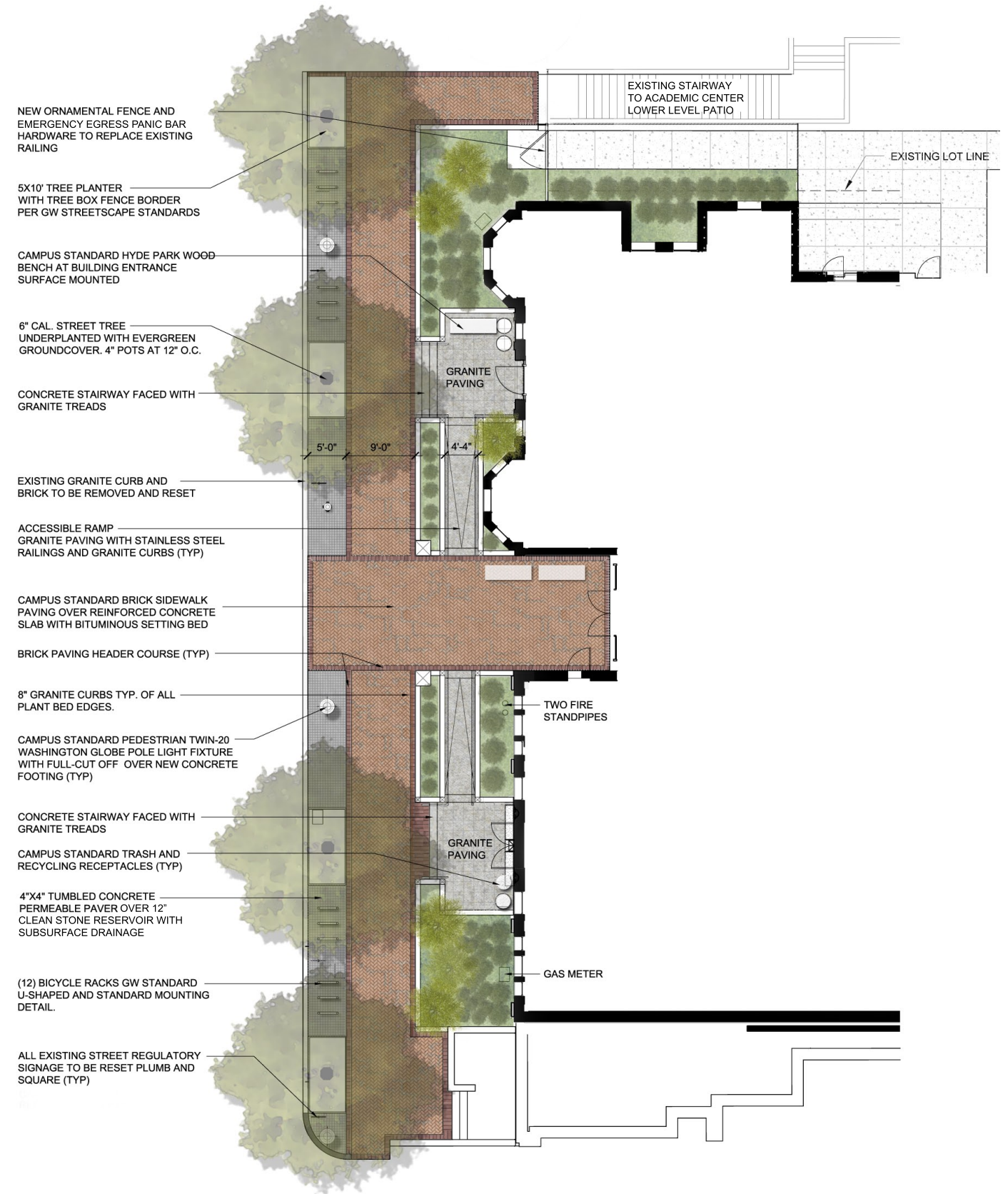
56	32	22	Project Totals (pre-certification estimates)		110 Points
Yes	?	No	Certified 40-49 points	Silver 50-59 points Gold 60-79 points Platinum 80-110 points	

LEED CHECKLIST

THIS PAGE INTENTIONALLY LEFT BLANK



EXISTING LANDSCAPE PLAN



PROPOSED LANDSCAPE PLAN

LANDSCAPE PLAN - SOUTH

*NOTE: STREETScape IMPROVEMENTS ARE SHOWN IN CONCEPT FOR ILLUSTRATIVE PURPOSES. THE FINAL DETAILS OF THE STREETScape IMPROVEMENTS WILL CONFORM WITH THE APPROVED FOGGY BOTTOM CAMPUS STREETScape GUIDELINES AS WELL AS OTHER APPLICABLE DESIGN AND PERMITTING STANDARDS.

PLANT SPECIE SELECTIONS IDENTIFIED ON THIS PLAN ARE SHOWN TO ILLUSTRATE DESIGN INTENT ONLY. THE PURPOSE IS TO GENERALLY DEFINE PLANT SIZE, CHARACTER, AND LOCATIONS. REFINEMENTS TO THE PLANTING DESIGN AND FINAL SELECTION OF ALL PLANT MATERIALS CONSISTENT WITH THE SPECIES SHOWN SHALL BE DEVELOPED DURING DETAILED DESIGN PHASES OF WORK.