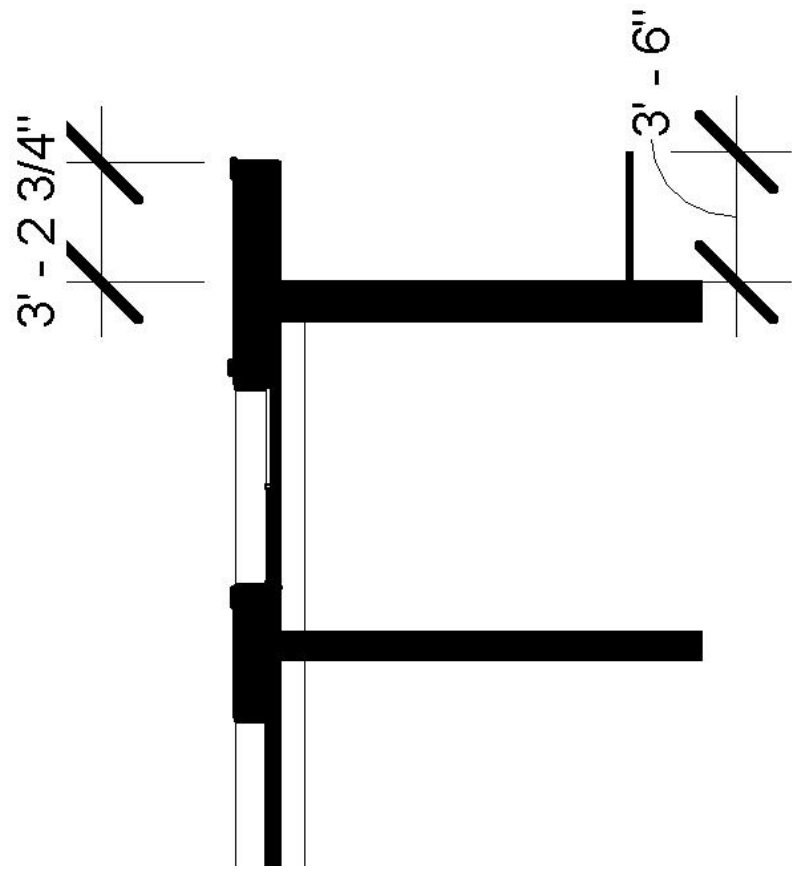


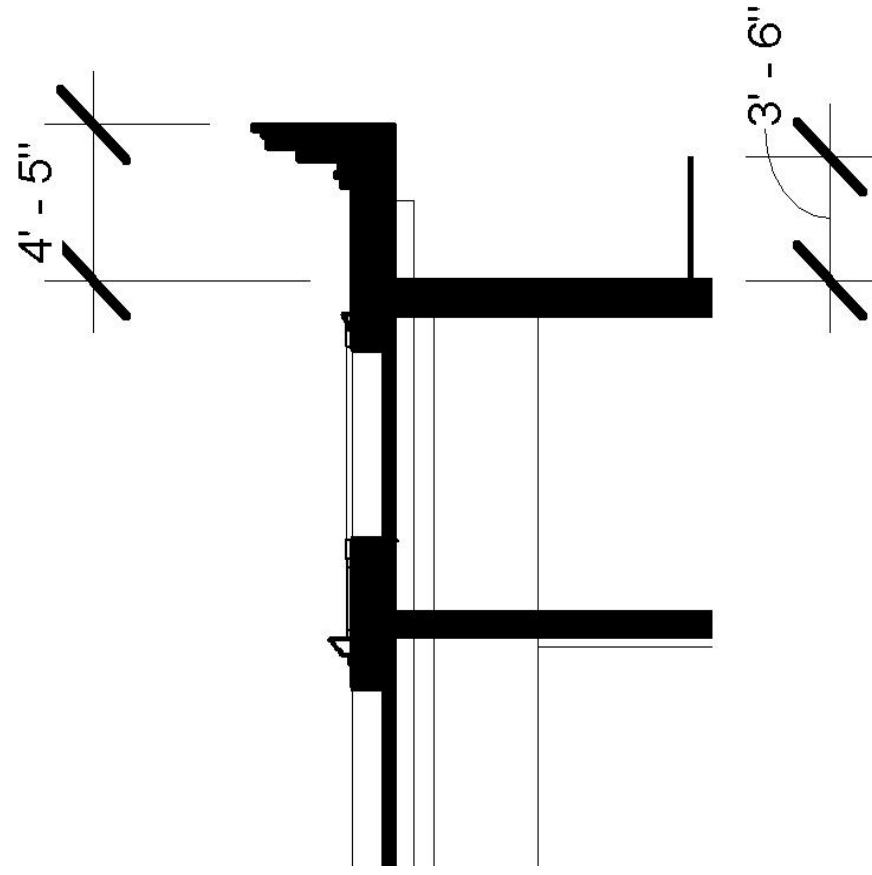


ENTRY ALONG H STREET

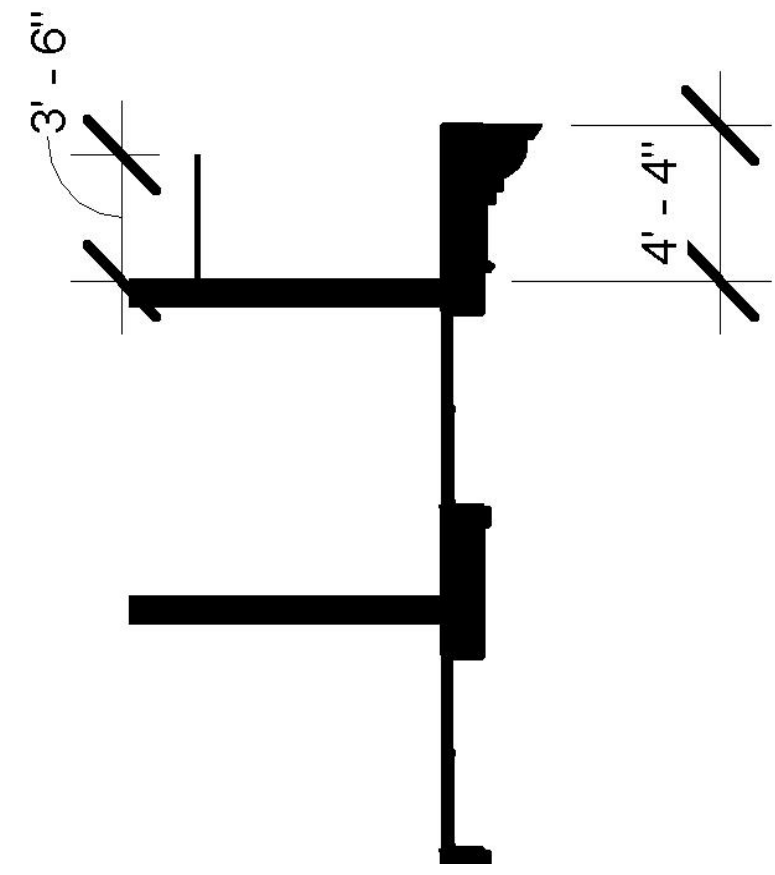




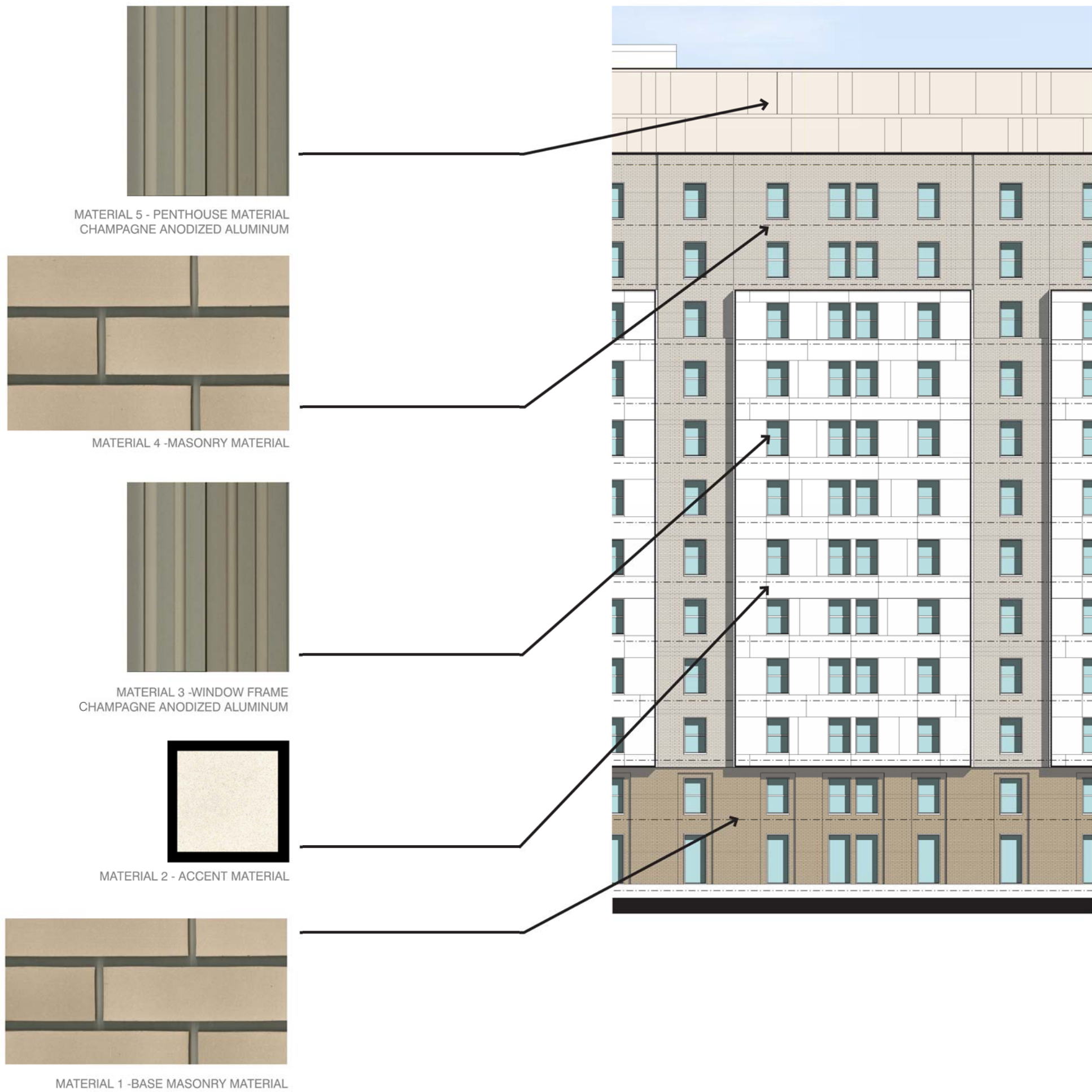
SCHENLEY HALL



CRAWFORD HALL



THE WEST END



LEED-NC v3.0 Preliminary Project Checklist				
George Washington University - Square 77A Feasibility Study				
Washington, DC - Square 77A bounded by H Street, I Street, 21st Street, and 22nd Street				
Yes	?	No		
17	5	1	3	<b>Sustainable Sites</b> 26 Points
Y				Prereq 1 <b>Construction Activity Pollution Prevention</b> Required
1				Credit 1 <b>Site Selection</b> 1
5				Credit 2 <b>Development Density &amp; Community Connectivity</b> 5
			1	Credit 3 <b>Brownfield Redevelopment</b> 1
6				Credit 4.1 <b>Alternative Transportation, Public Transportation Access</b> 6
1				Credit 4.2 <b>Alternative Transportation, Bicycle Storage &amp; Changing Rooms</b> 1
3				Credit 4.3 <b>Alternative Transportation, Low-Emitting and Fuel-Efficient Vehicles</b> 3
	2			Credit 4.4 <b>Alternative Transportation, Parking Capacity</b> 2
		1		Credit 5.1 <b>Site Development, Protect or Restore Habitat</b> 1
			1	Credit 5.2 <b>Site Development, Maximize Open Space</b> 1
1				Credit 6.1 <b>Stormwater Design, Quantity Control</b> 1
1				Credit 6.2 <b>Stormwater Design, Quality Control</b> 1
1				Credit 7.1 <b>Heat Island Effect, Non-Roof</b> 1
1				Credit 7.2 <b>Heat Island Effect, Roof</b> 1
			1	Credit 8 <b>Light Pollution Reduction</b> 1
6	2		2	<b>Water Efficiency</b> 10 Points
Y				Prereq 1 <b>Water Use Reduction, 20% Reduction</b> Required
4				Credit 1 <b>Water Efficient Landscaping</b> 2 to 4
			2	Credit 2 <b>Innovative Wastewater Technologies</b> 2
2	2			Credit 3 <b>Water Use Reduction</b> 2 to 4
12	2	11	10	<b>Energy &amp; Atmosphere</b> 35 Points
Y				Prereq 1 <b>Fundamental Commissioning of the Building Energy Systems</b> Required
Y				Prereq 2 <b>Minimum Energy Performance</b> Required
Y				Prereq 3 <b>Fundamental Refrigerant Management</b> Required
8		11		Credit 1 <b>Optimize Energy Performance</b> 1 to 19
			7	Credit 2 <b>On-Site Renewable Energy</b> 1 to 7
2				Credit 3 <b>Enhanced Commissioning</b> 2
2				Credit 4 <b>Enhanced Refrigerant Management</b> 2
			3	Credit 5 <b>Measurement &amp; Verification</b> 3
	2			Credit 6 <b>Green Power</b> 2
5	2	2	5	<b>Materials &amp; Resources</b> 14 Points
Y				Prereq 1 <b>Storage &amp; Collection of Recyclables</b> Required
			3	Credit 1.1 <b>Building Reuse, Maintain Existing Walls, Floors &amp; Roof</b> 1 to 3
			1	Credit 1.2 <b>Building Reuse, Maintain 50% of Interior Non-Structural Elements</b> 1
2				Credit 2 <b>Construction Waste Management</b> 1 to 2
		2		Credit 3 <b>Materials Reuse</b> 1 to 2
1	1			Credit 4 <b>Recycled Content</b> 1 to 2
2				Credit 5 <b>Regional Materials</b> 1 to 2
			1	Credit 6 <b>Rapidly Renewable Materials</b> 1
	1			Credit 7 <b>Certified Wood</b> 1
12	1	1	1	<b>Indoor Environmental Quality</b> 15 Points
Y				Prereq 1 <b>Minimum IAQ Performance</b> Required
Y				Prereq 2 <b>Environmental Tobacco Smoke (ETS) Control</b> Required
1				Credit 1 <b>Outdoor Air Delivery Monitoring</b> 1
			1	Credit 2 <b>Increased Ventilation</b> 1
1				Credit 3.1 <b>Construction IAQ Management Plan, During Construction</b> 1
1				Credit 3.2 <b>Construction IAQ Management Plan, Before Occupancy</b> 1
1				Credit 4.1 <b>Low-Emitting Materials, Adhesives &amp; Sealants</b> 1
1				Credit 4.2 <b>Low-Emitting Materials, Paints &amp; Coatings</b> 1
1				Credit 4.3 <b>Low-Emitting Materials, Flooring Systems</b> 1
1				Credit 4.4 <b>Low-Emitting Materials, Composite Wood &amp; Agrifiber Products</b> 1
1				Credit 5 <b>Indoor Chemical &amp; Pollutant Source Control</b> 1
1				Credit 6.1 <b>Controllability of Systems, Lighting</b> 1
1				Credit 6.2 <b>Controllability of Systems, Thermal Comfort</b> 1
1				Credit 7.1 <b>Thermal Comfort, Design</b> 1
1				Credit 7.2 <b>Thermal Comfort, Verification</b> 1
		1		Credit 8.1 <b>Daylight &amp; Views, Daylight 75% of Spaces</b> 1
	1			Credit 8.2 <b>Daylight &amp; Views, Views for 90% of Spaces</b> 1
4	2			<b>Innovation &amp; Design Process</b> 6 Points
1				Credit 1.1 <b>Innovation in Design: Provide Specific Title</b> 1
1				Credit 1.2 <b>Innovation in Design: Provide Specific Title</b> 1
1				Credit 1.3 <b>Innovation in Design: Provide Specific Title</b> 1
	1			Credit 1.4 <b>Innovation in Design: Provide Specific Title</b> 1
	1			Credit 1.5 <b>Innovation in Design: Provide Specific Title</b> 1
1				Credit 2 <b>LEED® Accredited Professional</b> 1
	1	2	1	<b>Regional Priority</b> 4 Points
		1		Credit 1.1 <b>Regional Priority: Provide Specific Title</b> 1
	1			Credit 1.2 <b>Regional Priority: Provide Specific Title</b> 1
		1		Credit 1.3 <b>Regional Priority: Provide Specific Title</b> 1
			1	Credit 1.4 <b>Regional Priority: Provide Specific Title</b> 1
56	13	16	3	<b>Project Totals (pre-certification estimates)</b> 110 Points
Yes	?	No		Certified 40-49 points Silver 50-59 points Gold 60-79 points Platinum 80-110 points