

**SITE
75A**

Washington, DC

**THE GEORGE
WASHINGTON
UNIVERSITY**
WASHINGTON, DC

Gensler

2020 K Street, Northwest
Suite 200
Washington DC 20006
Telephone 202.721.5200
Facsimile 202.872.8587

Seal/Signature

Date

10/26/2012

Project Name

SITE 75A

ZC Case #

06-11G/06-12G

Project Number

09.7075.000

Description

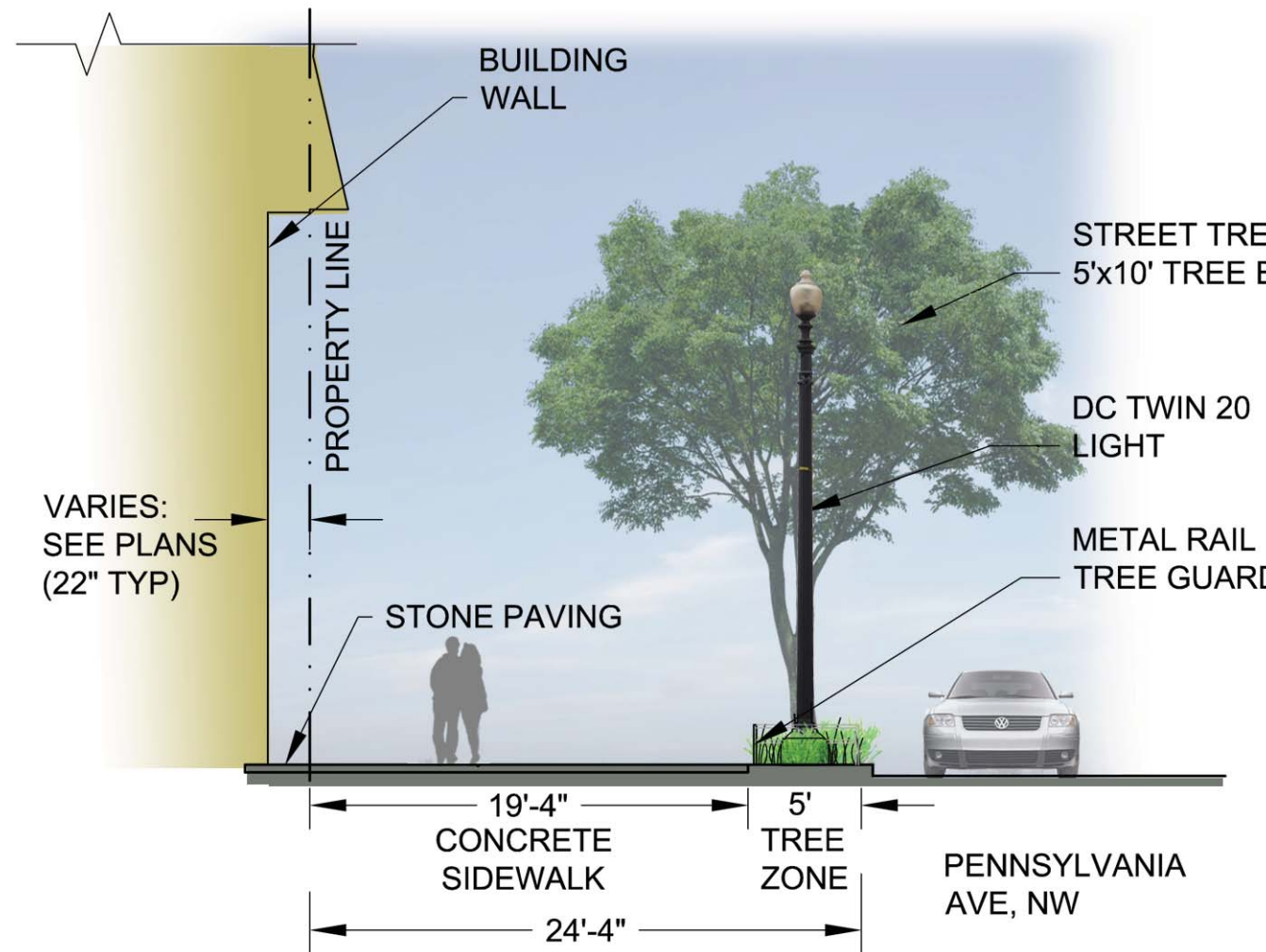
SITE
SECTIONS

Scale

1/8"=1'-0"

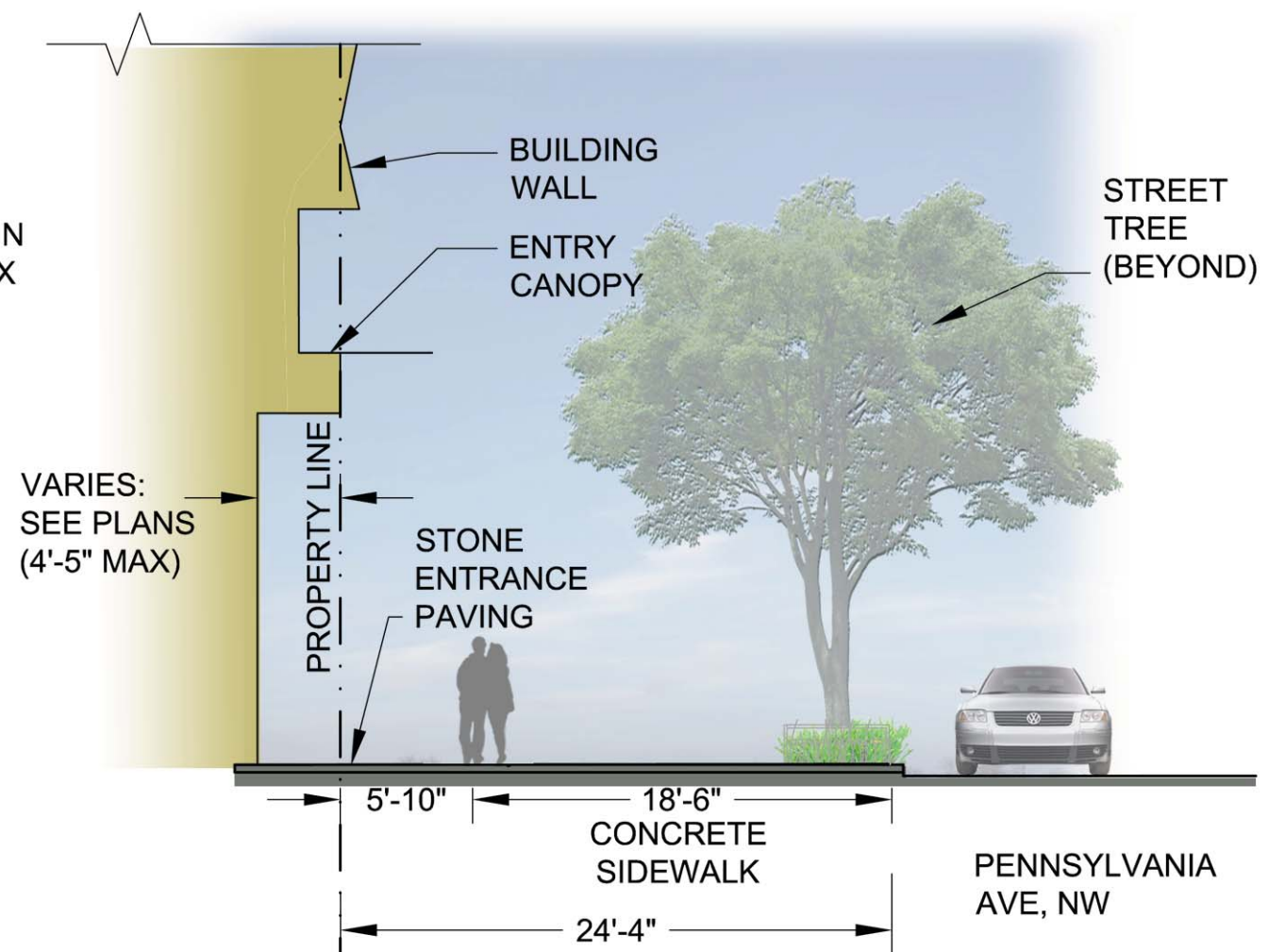
L-05

© 2011 Gensler



NOTES:
1. GRADING IS NOT SHOWN ON DETAIL. SEE CIVIL DRAWINGS.

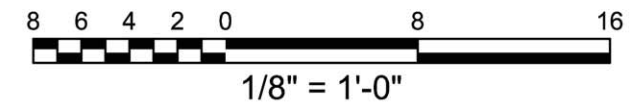
1 STREETScape SECTION - TYPICAL
PENNSYLVANIA AVENUE, NW
SCALE: 1/8" = 1' - 0"



NOTES:
1. GRADING IS NOT SHOWN ON DETAIL. SEE CIVIL DRAWINGS.

2 STREETScape SECTION - ENTRANCE
PENNSYLVANIA AVENUE, NW
SCALE: 1/8" = 1' - 0"

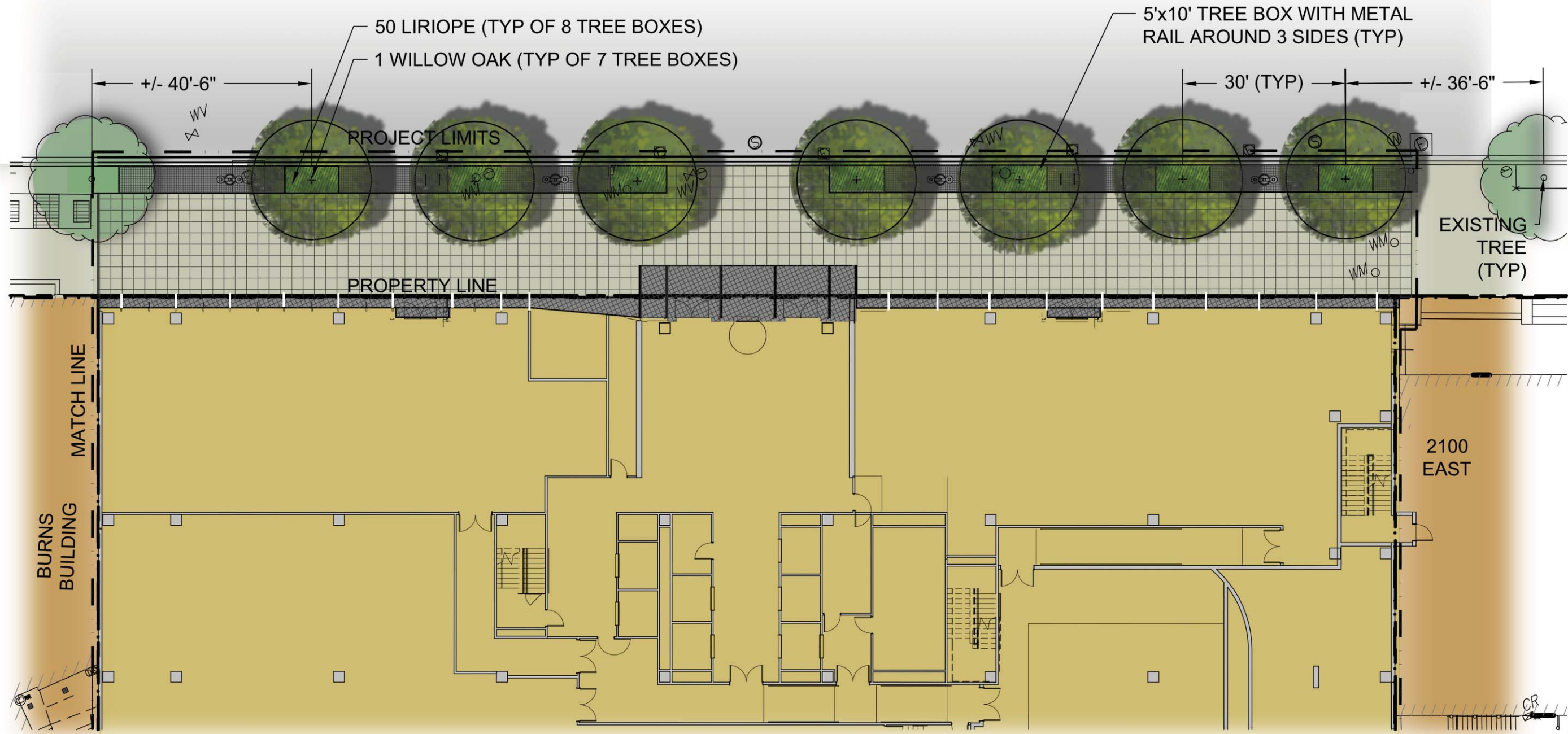
NOTES:
1. STREETScape DETAILS ARE SHOWN IN CONCEPT FOR ILLUSTRATIVE PURPOSES. THE FINAL DETAILS OF THE STREETScape IMPROVEMENTS WILL BE SELECTED DURING DETAILED DESIGN PHASES OF WORK AND CONFORM WITH APPLICABLE DESIGN AND PERMITTING STANDARDS.



PLANT LEGEND

BOTANICAL NAME	COMMON NAME	QTY	SIZE	ROOT	SPACING
<i>Quercus phellos</i>	Willow Oak	7	3" cal.	B&B	
<i>Liriope muscari</i> 'Big Blue'	Big Blue Liriope	400	1 quart	cont.	12"

PENNSYLVANIA AVENUE, NW



SITE 75A

Washington, DC

THE GEORGE WASHINGTON UNIVERSITY

WASHINGTON, DC

Gensler

2020 K Street, Northwest
Suite 200
Washington DC 20006
Telephone 202.721.5200
Facsimile 202.872.8587

Seal/Signature

Date

10/26/2012

Project Name

SITE 75A

ZC Case #

06-11G/06-12G

Project Number

09.7075.000

Description

PENN. AVENUE PLANTING PLAN

Scale

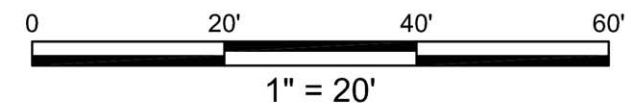
1"=20'

L-06

© 2011 Gensler

NOTES:

1. STREETSCAPE DETAILS ARE SHOWN IN CONCEPT FOR ILLUSTRATIVE PURPOSES. THE FINAL DETAILS OF THE STREETSCAPE IMPROVEMENTS WILL BE SELECTED DURING DETAILED DESIGN PHASES OF WORK AND CONFORM WITH APPLICABLE DESIGN AND PERMITTING STANDARDS.
2. PLANT SPECIES SELECTIONS IDENTIFIED ON THIS PLAN ARE SHOWN TO ILLUSTRATE DESIGN INTENT ONLY. THE PURPOSE IS TO GENERALLY DEFINE PLANT SIZE, CHARACTER, AND LOCATIONS. REFINEMENTS TO THE PLANTING DESIGN AND FINAL SELECTION OF ALL PLANT MATERIALS CONSISTENT WITH THE SPECIES SHOWN SHALL BE DEVELOPED DURING DETAILED DESIGN PHASES OF WORK.
3. INTERIOR LAYOUTS ARE ILLUSTRATIVE ONLY AND SUBJECT TO CHANGE ON FINAL PLAN.



**SITE
75A**

Washington, DC

**THE GEORGE
WASHINGTON
UNIVERSITY**

WASHINGTON, DC

Gensler

2020 K Street, Northwest
Suite 200
Washington DC 20006
Telephone 202.721.5200
Facsimile 202.872.8587

Seal/Signature

Date

10/26/2012

Project Name

SITE 75A

ZC Case #

06-11G/06-12G

Project Number

09.7075.000

Description

PENN.
AVENUE
PLANTING
PLAN

Scale

1"=20'

L-07

© 2011 Gensler

THIS SHEET LEFT INTENTIONALLY BLANK



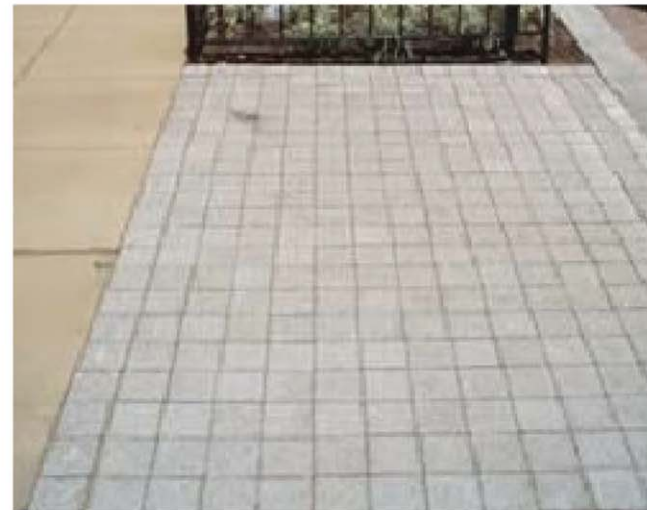
1 DC TWIN 20 LIGHT
N.T.S.



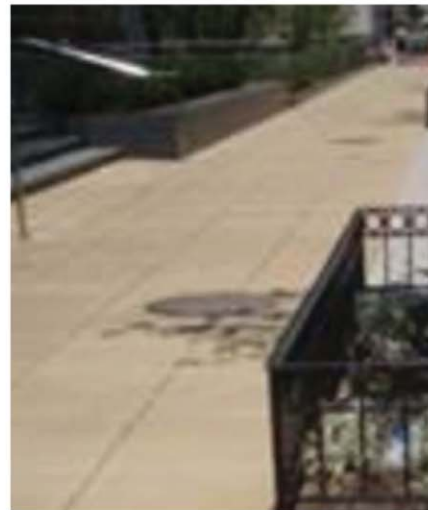
2 WILLOW OAK TREE
N.T.S.



3 METAL RAIL AT TREE BOX
N.T.S.



4 COBBLE PRECAST PAVERS
N.T.S.



5 SCORED CONCRETE
2'x2' BUFF COLOR
N.T.S.



6 TYPICAL DDOT
BIKE RACK
N.T.S.

NOTES:

1. STREETScape DETAILS ARE SHOWN IN CONCEPT FOR ILLUSTRATIVE PURPOSES. THE FINAL DETAILS OF THE STREETScape IMPROVEMENTS WILL BE SELECTED DURING DETAILED DESIGN PHASES OF WORK AND CONFORM WITH APPLICABLE DESIGN AND PERMITTING STANDARDS.
2. PLANT SPECIES SELECTIONS IDENTIFIED ON THIS PLAN ARE SHOWN TO ILLUSTRATE DESIGN INTENT ONLY. THE PURPOSE IS TO GENERALLY DEFINE PLANT SIZE, CHARACTER, AND LOCATIONS. REFINEMENTS TO THE PLANTING DESIGN AND FINAL SELECTION OF ALL PLANT MATERIALS CONSISTENT WITH THE SPECIES SHOWN SHALL BE DEVELOPED DURING DETAILED DESIGN PHASES OF WORK.

**SITE
75A**

Washington, DC

**THE GEORGE
WASHINGTON
UNIVERSITY**

WASHINGTON, DC

Gensler

2020 K Street, Northwest
Suite 200
Washington DC 20006
Telephone 202.721.5200
Facsimile 202.872.8587

Seal/Signature

Date

10/26/2012

Project Name

SITE 75A

ZC Case #

06-11G/06-12G

Project Number

09.7075.000

Description

SITE
FURNISHINGS

Scale

N.T.S.

L-08

© 2011 Gensler

**SITE
75A**

Washington, DC

**THE GEORGE
WASHINGTON
UNIVERSITY**
WASHINGTON, DC

Gensler

2020 K Street, Northwest
Suite 200
Washington DC 20006
Telephone 202.721.5200
Facsimile 202.872.8587

Seal/Signature

Date

10/26/2012

Project Name

SITE 75A

ZC Case #

06-11G/06-12G

Project Number

09.7075.000

Description

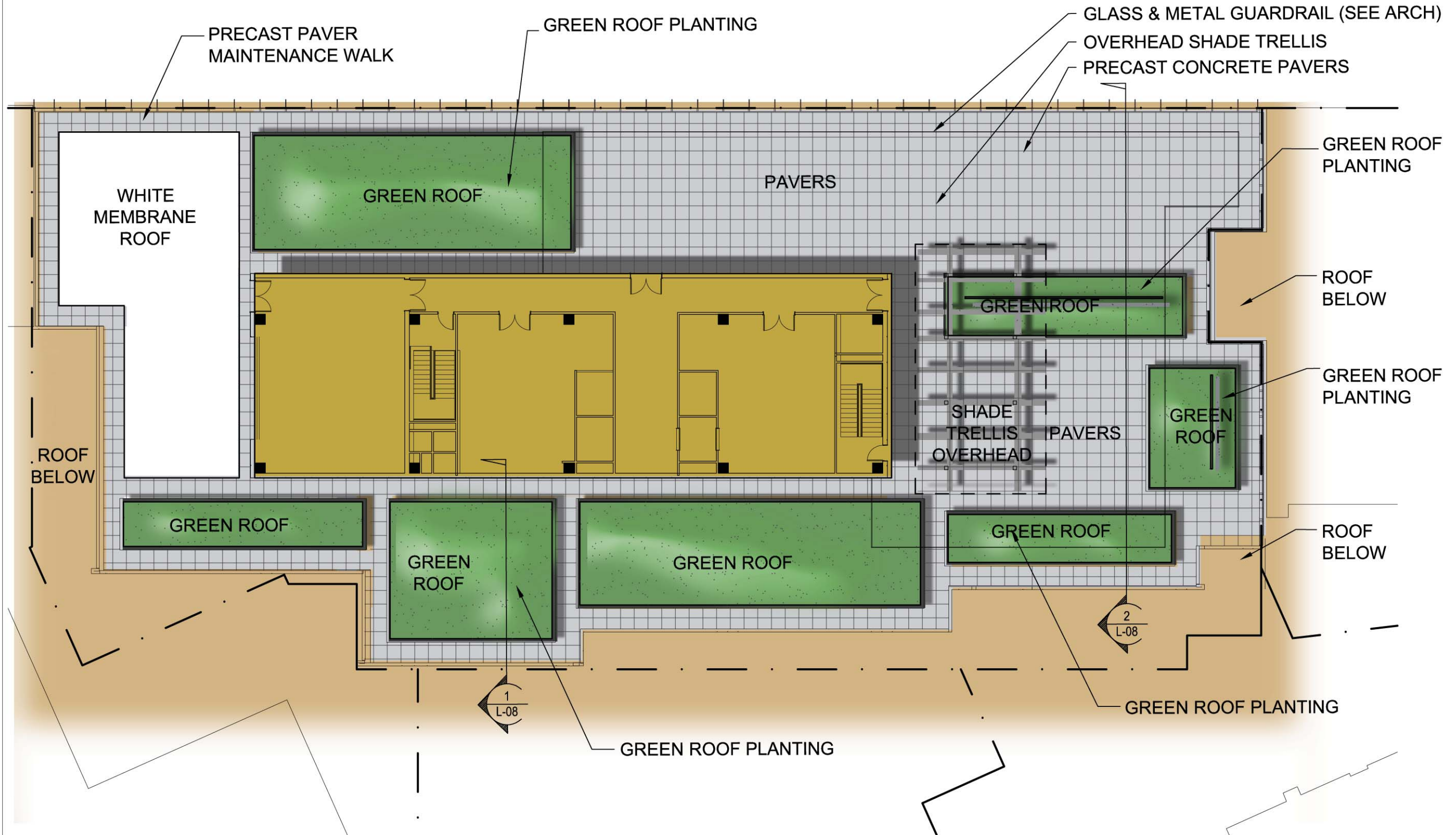
GREEN
ROOF PLAN

Scale

1"=20'

L-09

© 2011 Gensler

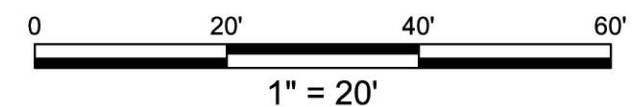


BOTANICAL NAME	VARIETY	GROWN HEIGHT
<i>Sedum album</i>	Coral Carpet	6"
<i>Sedum kamtschaticum</i>	Variegatum	4"
<i>Sedum matrona</i>	Matrona	12-24"
<i>Sedum erythrostictum</i>	Frosty Morn	12-15"
<i>Sedum spurium</i>	John Creech	2"

BOTANICAL NAME	COMMON NAME	SPACING	GROWN HEIGHT
<i>Stipa tenuissima</i> "Ponytails"	Feather Grass	12"	12-15"
<i>Andropogon scoparius</i>	Little Bluestem	12-16"	30-36"
<i>Bouteloua gracilis</i>	Bluegrama Lovington	12-16"	16-20"
<i>Trachelospermum jasminoides</i>	Star Jasmine	10	Varies
<i>Acanthaceae thunbergia</i>	Blue Sky Vine	15	Varies

NOTES:

1. LOCATION OF GREEN ROOF AREAS AND CONFIGURATION OF TRELLIS ARE FOR ILLUSTRATIVE PURPOSES ONLY AND SUBJECT TO CHANGE FOR FINAL PLAN.
2. INTERIOR LAYOUTS ARE ILLUSTRATIVE ONLY AND SUBJECT TO CHANGE ON FINAL PLAN.



GREEN ROOF PLANTING

Plant species selections identified are shown to illustrate design intent only. The purpose is to generally define plant size, and character. Refinements to the planting design and final selection of all plant materials consistent with the species shown shall be developed during detailed design phases of work.

**SITE
75A**

Washington, DC

**THE GEORGE
WASHINGTON
UNIVERSITY**
WASHINGTON, DC

Gensler

2020 K Street, Northwest
Suite 200
Washington DC 20006
Telephone 202.721.5200
Facsimile 202.872.8587

Seal/Signature

NOTE: LOCATION OF GREEN ROOF AREAS AND CONFIGURATION OF TRELLIS ARE FOR ILLUSTRATIVE PURPOSES ONLY AND SUBJECT TO CHANGE FOR FINAL PLAN.



Date

10/26/2012

Project Name

SITE 75A

ZC Case #

06-11G/06-12G

Project Number

09.7075.000

Description

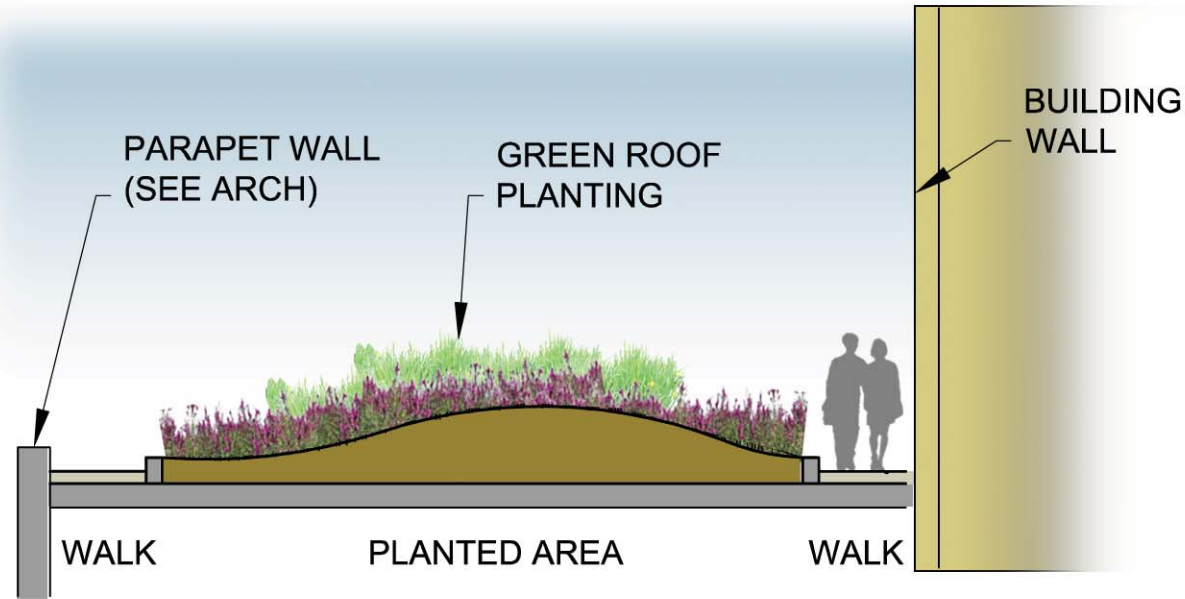
ROOF
SECTIONS

Scale

1/8"=1'-0"

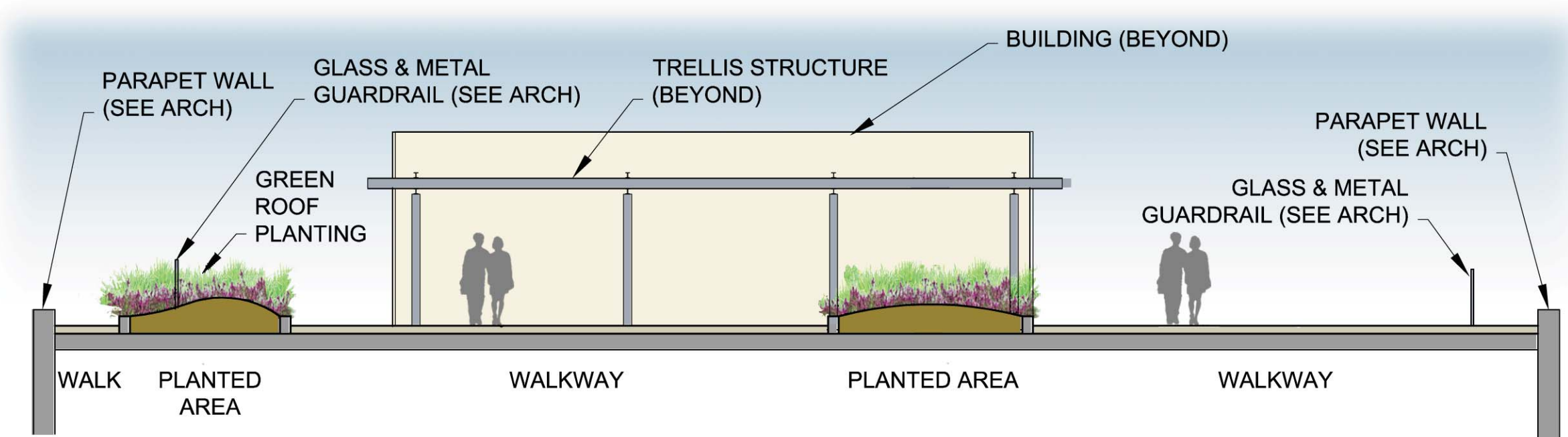
L-10

© 2011 Gensler



1 GREEN ROOF SECTION
SCALE: 1/8" = 1' - 0"

3 GREEN ROOF PLANTING CONCEPT



2 GREEN ROOF SECTION
SCALE: 1/8" = 1' - 0"

