

**SITE  
75A**

Washington, DC

**THE GEORGE  
WASHINGTON  
UNIVERSITY**

WASHINGTON, DC

**Gensler**

2020 K Street, Northwest  
Suite 200  
Washington DC 20006  
Telephone 202.721.5200  
Facsimile 202.872.8587

**Seal/Signature**

**Date**

12/31/2012

**Project Name**

SITE 75A

**ZC Case #**

06-11G/06-12G

**Project Number**

09.7075.000

**Description**

EXTERIOR  
RENDERINGS

**Scale**

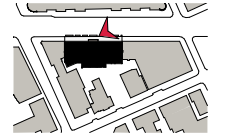
As indicated

**A-308**

© 2011 Gensler



NOTE: SIGNAGE SHOWN FOR ILLUSTRATIVE PURPOSES ONLY.  
STREETSCAPE DETAILS ARE SHOWN IN CONCEPT FOR ILLUSTRATIVE PURPOSES. THE FINAL DETAILS OF THE STREETSCAPE IMPROVEMENTS  
WILL BE SELECTED DURING DETAILED DESIGN PHASES OF WORK AND CONFORM WITH APPLICABLE DESIGN AND PERMITTING STANDARDS.



VIEW FROM SIDEWALK LOOKING WEST

SCALE: NOT TO SCALE

**SITE  
75A**

Washington, DC

**THE GEORGE  
WASHINGTON  
UNIVERSITY**  
WASHINGTON, DC

**Gensler**  
2020 K Street, Northwest  
Suite 200  
Washington DC 20006  
Telephone 202.721.5200  
Facsimile 202.872.8587

**Seal/Signature**

**Date**

12/31/2012

**Project Name**

SITE 75A

**ZC Case #**

06-11G/06-12G

**Project Number**

09.7075.000

**Description**

ADDITIONAL  
PERSPECTIVES

**Scale**

As indicated

**A-309**  
© 2011 Gensler



NOTE: LOCATION OF GREEN ROOF AREAS AND CONFIGURATION OF TRELLIS ARE ILLUSTRATIVE ONLY AND SUBJECT TO CHANGE ON FINAL PLAN

**ROOF TRELLIS**

SCALE: NOT TO SCALE

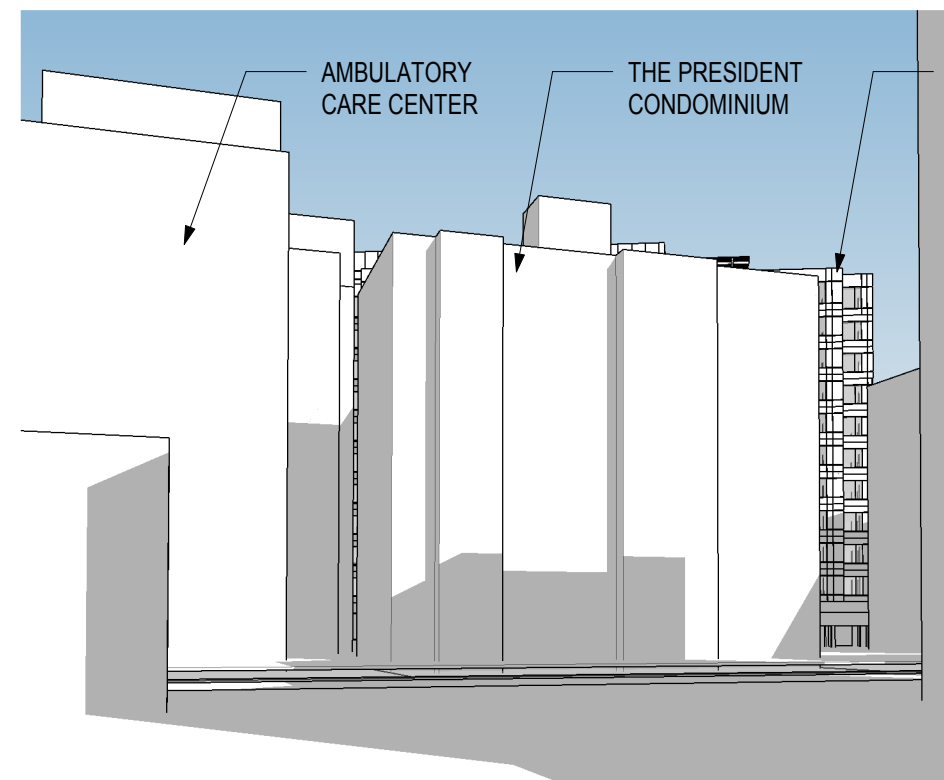
1



**VIEW FROM THE PRESIDENT CONDOS AT FOURTH FLOOR**

SCALE: NOT TO SCALE

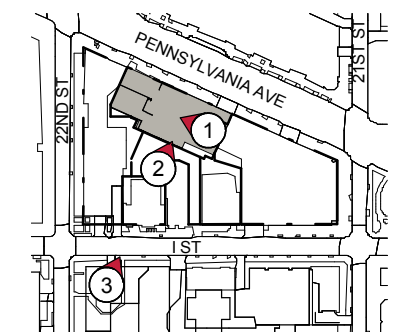
4



**VIEW FROM ACADEMIC CENTER**

SCALE: NOT TO SCALE

3



# SITE 75A

Washington, DC

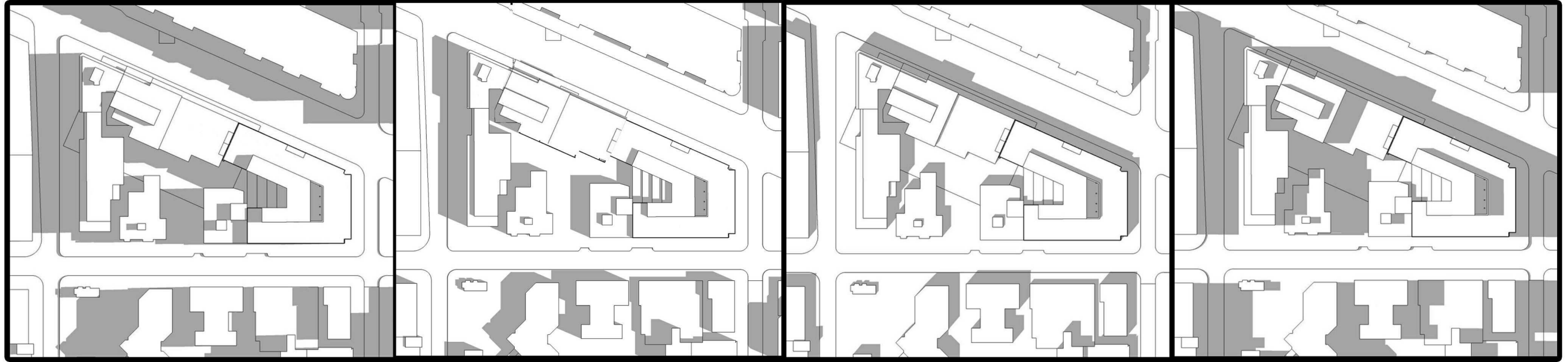
**THE GEORGE  
WASHINGTON  
UNIVERSITY**  
WASHINGTON, DC

## Gensler

2020 K Street, Northwest  
Suite 200  
Washington DC 20006  
Telephone 202.721.5200  
Facsimile 202.872.8587

Seal/Signature

AS APPROVED UNDER THE FIRST-STAGE PUD (SITE 75A ONLY)



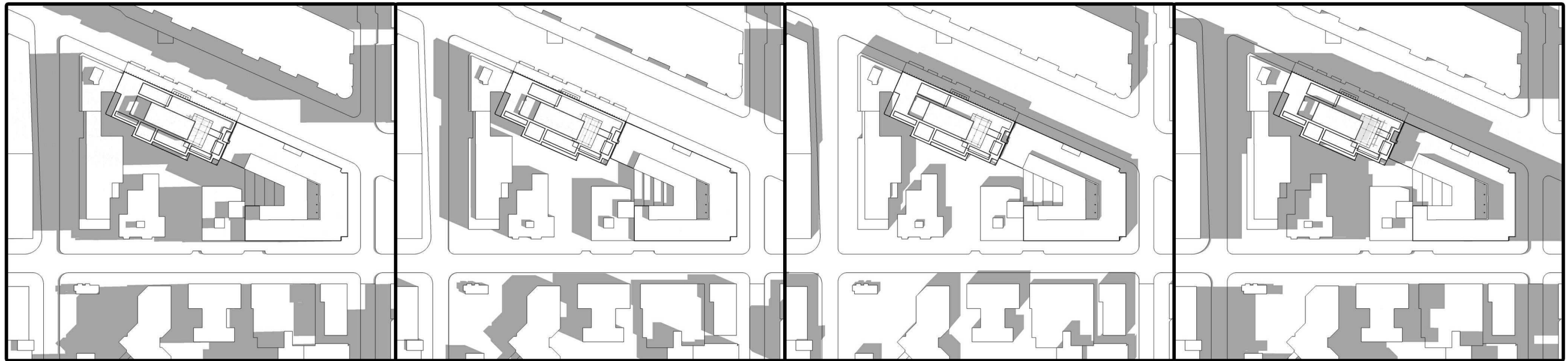
8AM

10AM

1PM

4PM

AS PROPOSED WITH THE MODIFICATION OF THE FIRST-STAGE PUD AND RELATED REZONING (SITE 75A + 2100 WEST)



8AM

10AM

1PM

4PM

### Date

12/31/2012

### Project Name

SITE 75A

### ZC Case #

06-11G/06-12G

### Project Number

09.7075.000

### Description

SHADOW  
STUDIES -  
SUMMER

### Scale

6" = 1'-0"

**A-310**  
© 2011 Gensler

AS APPROVED UNDER THE FIRST-STAGE PUD (SITE 75A ONLY)



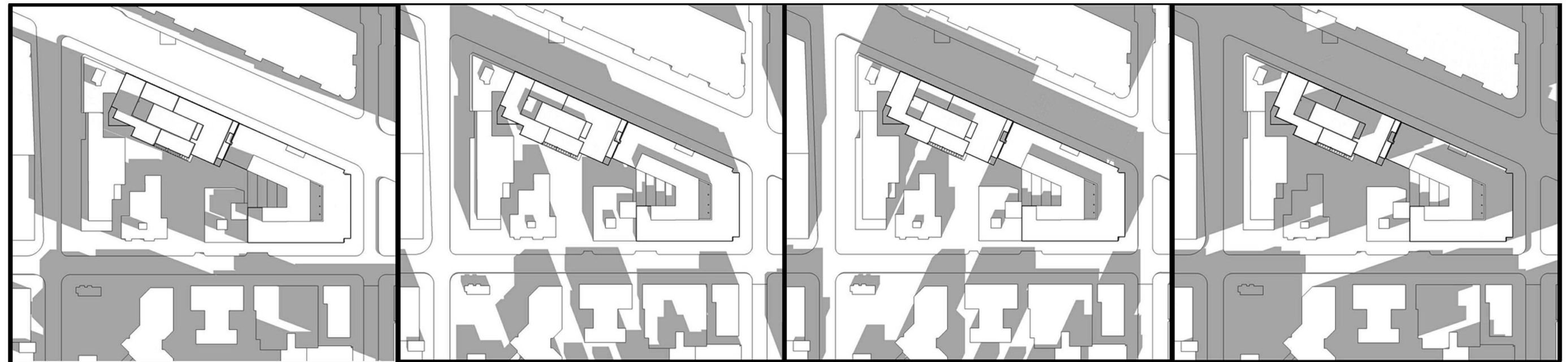
8AM

10AM

1PM

4PM

AS PROPOSED WITH THE MODIFICATION OF THE FIRST-STAGE PUD AND RELATED REZONING (SITE 75A + 2100 WEST)



8AM

10AM

1PM

4PM

# SITE 75A

Washington, DC

**THE GEORGE WASHINGTON UNIVERSITY**  
WASHINGTON, DC

## Gensler

2020 K Street, Northwest  
Suite 200  
Washington DC 20006  
Telephone 202.721.5200  
Facsimile 202.872.8587

**Seal/Signature**

**Date**

12/31/2012

**Project Name**

SITE 75A

**ZC Case #**

06-11G/06-12G

**Project Number**

09.7075.000

**Description**

SHADOW STUDIES -  
SPRING &  
FALL

**Scale**

6" = 1'-0"

# A-311

© 2011 Gensler

# SITE 75A

Washington, DC

**THE GEORGE WASHINGTON UNIVERSITY**  
WASHINGTON, DC

## Gensler

2020 K Street, Northwest  
Suite 200  
Washington DC 20006  
Telephone 202.721.5200  
Facsimile 202.872.8587

Seal/Signature

AS APPROVED UNDER THE FIRST-STAGE PUD (SITE 75A ONLY)



8AM

10AM

1PM

4PM

AS PROPOSED WITH THE MODIFICATION OF THE FIRST-STAGE PUD AND RELATED REZONING (SITE 75A + 2100 WEST)



8AM

10AM

1PM

4PM

### Date

12/31/2012

### Project Name

SITE 75A

### ZC Case #

06-11G/06-12G

### Project Number

09.7075.000

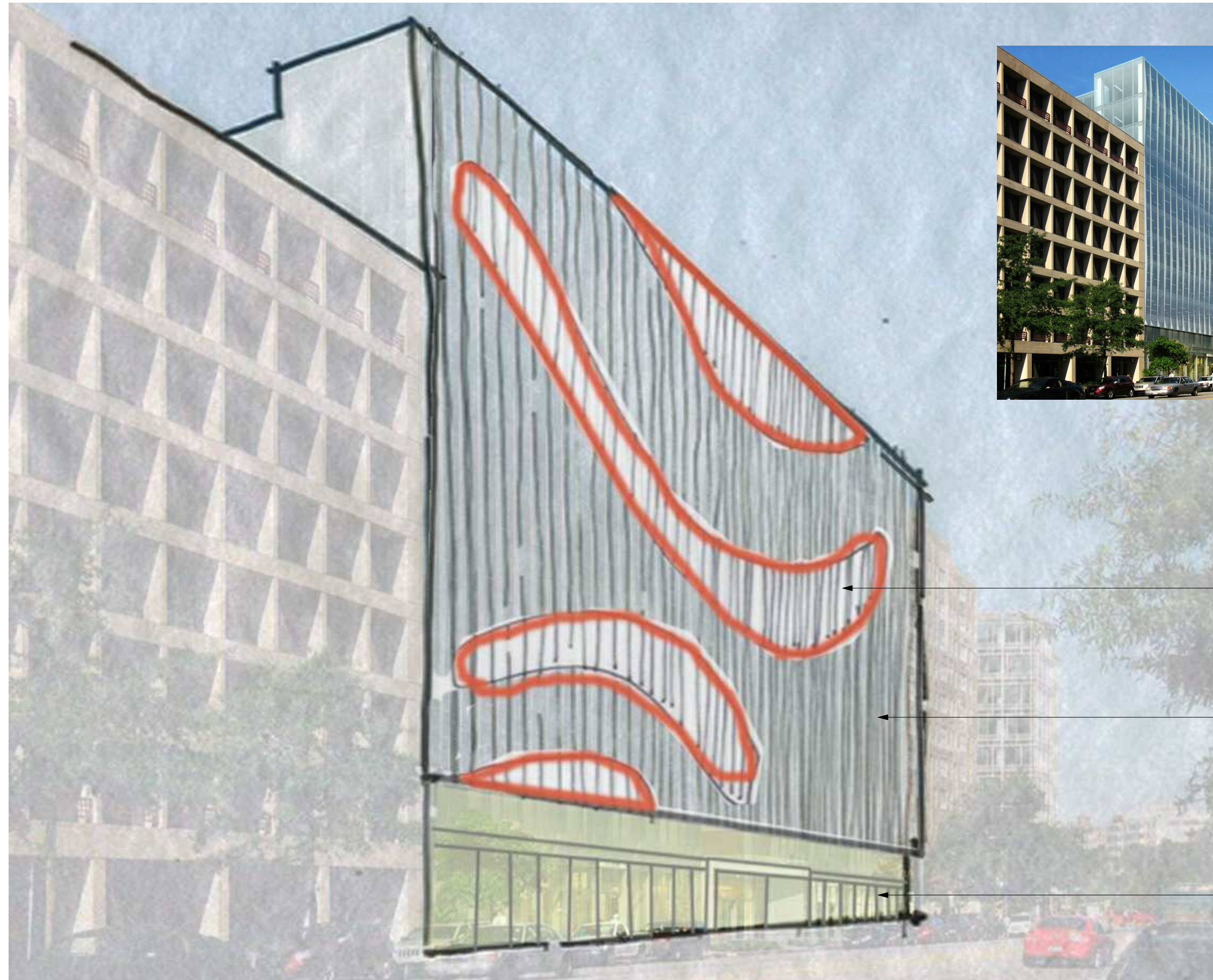
### Description

SHADOW STUDIES - WINTER

### Scale

6" = 1'-0"

**A-312**  
© 2011 Gensler



**SITE  
75A**

Washington, DC

**THE GEORGE  
WASHINGTON  
UNIVERSITY**  
WASHINGTON, DC

**Gensler**

2020 K Street, Northwest  
Suite 200  
Washington DC 20006  
Telephone 202.721.5200  
Facsimile 202.872.8587

**Seal/Signature**

**Date**

12/31/2012

**Project Name**

SITE 75A

**ZC Case #**

06-11G/06-12G

**Project Number**

09.7075.000

**Description**

FACADE  
DIAGRAM

**Scale**

12" = 1'-0"

**A-313**

© 2011 Gensler

**SITE  
75A**

Washington, DC

**THE GEORGE  
WASHINGTON  
UNIVERSITY**  
WASHINGTON, DC

**Gensler**

2020 K Street, Northwest  
Suite 200  
Washington DC 20006  
Telephone 202.721.5200  
Facsimile 202.872.8587

**Seal/Signature**

**Date**

12/31/2012

**Project Name**

SITE 75A

**ZC Case #**

06-11G/06-12G

**Project Number**

09.7075.000

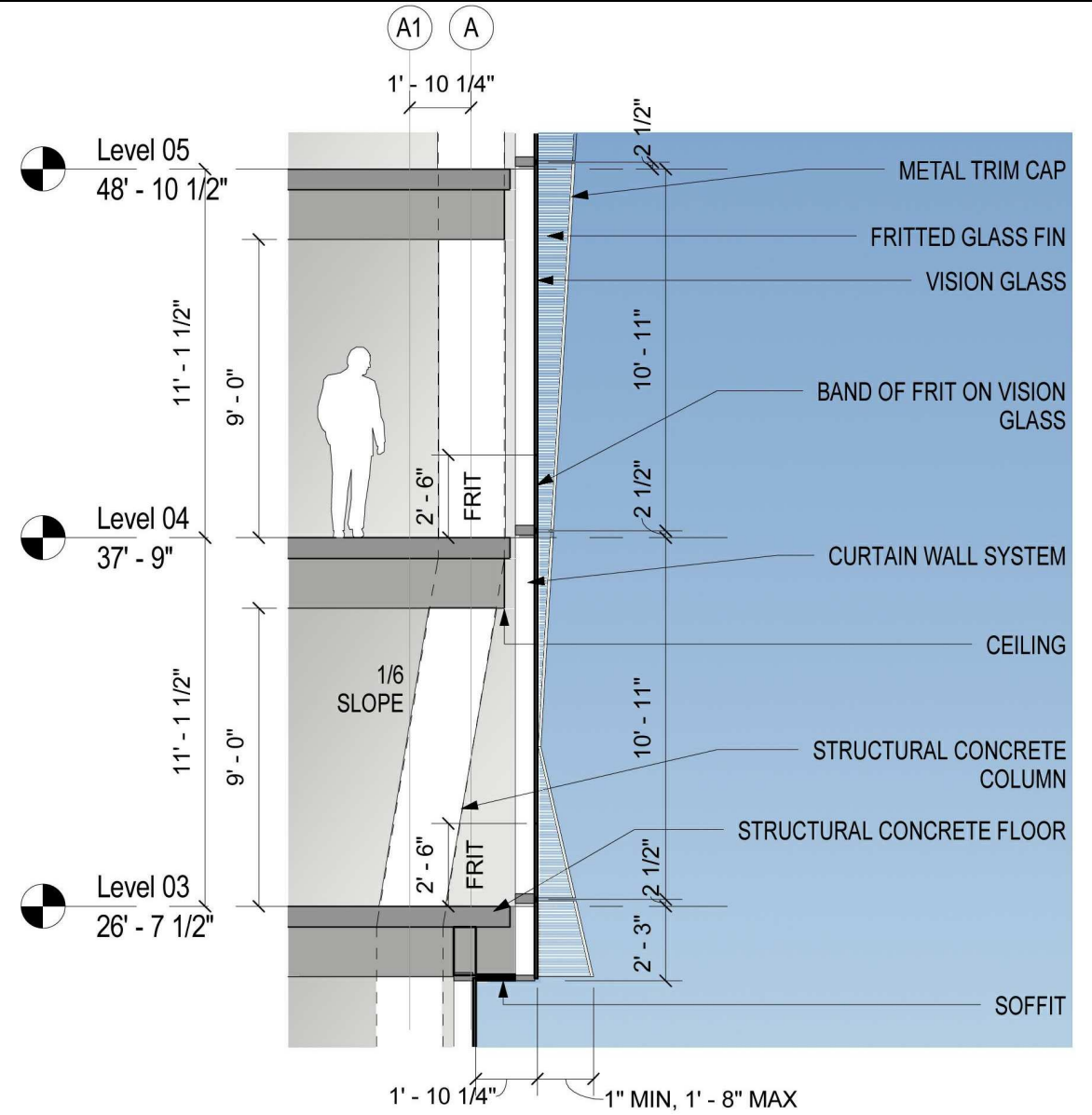
**Description**

DETAILS-  
NORTH  
FACADE  
UPPER  
LEVELS

**Scale**

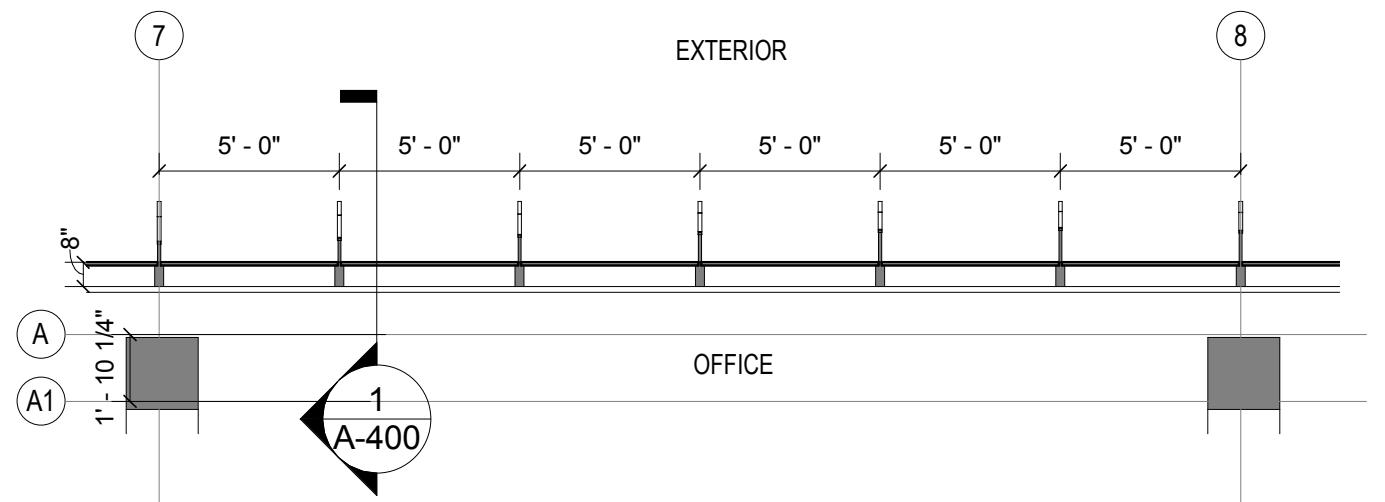
As indicated

**A-400**  
© 2011 Gensler



SECTION - CURTAIN WALL WITH GLASS FINES

SCALE: 3/16" = 1'-0"



PLAN - CURTAIN WALL WITH GLASS FINES

SCALE: 3/16" = 1'-0"

RENDERINGS- CURTAIN WALL WITH GLASS FINES

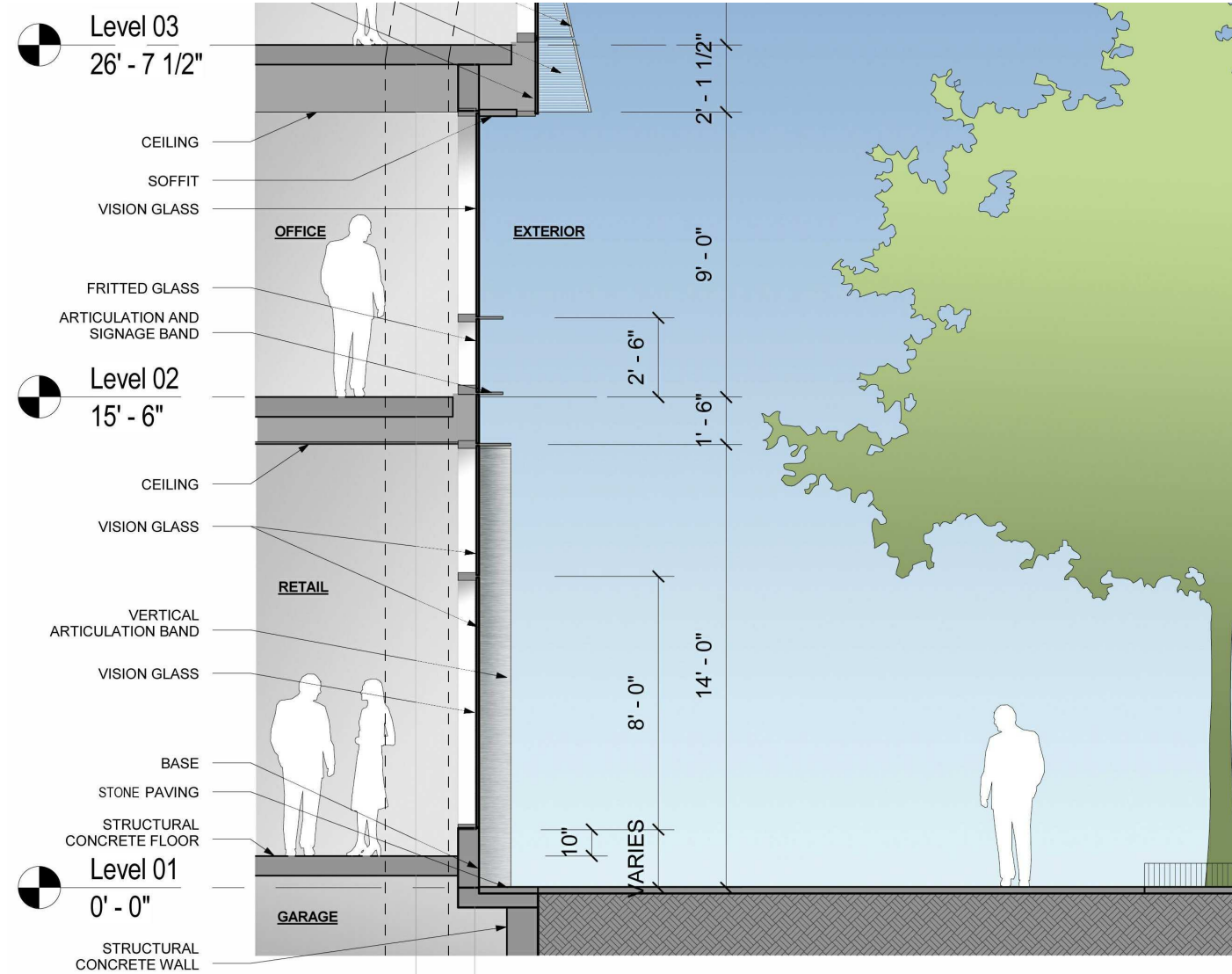
SCALE: 3" = 1'-0"



NOTE: SIGNAGE SHOWN FOR ILLUSTRATION PURPOSES ONLY.  
 NOTE: STREETSCAPE DETAILS ARE SHOWN IN CONCEPT FOR ILLUSTRATIVE PURPOSES. THE FINAL DETAILS OF THE STREETSCAPE IMPROVEMENTS WILL BE SELECTED DURING DETAILED DESIGN PHASES OF WORK AND CONFORM WITH APPLICABLE DESIGN AND PERMITTING STANDARDS.

RENDERED VIEW OF NORTH FACADE GROUND LEVEL

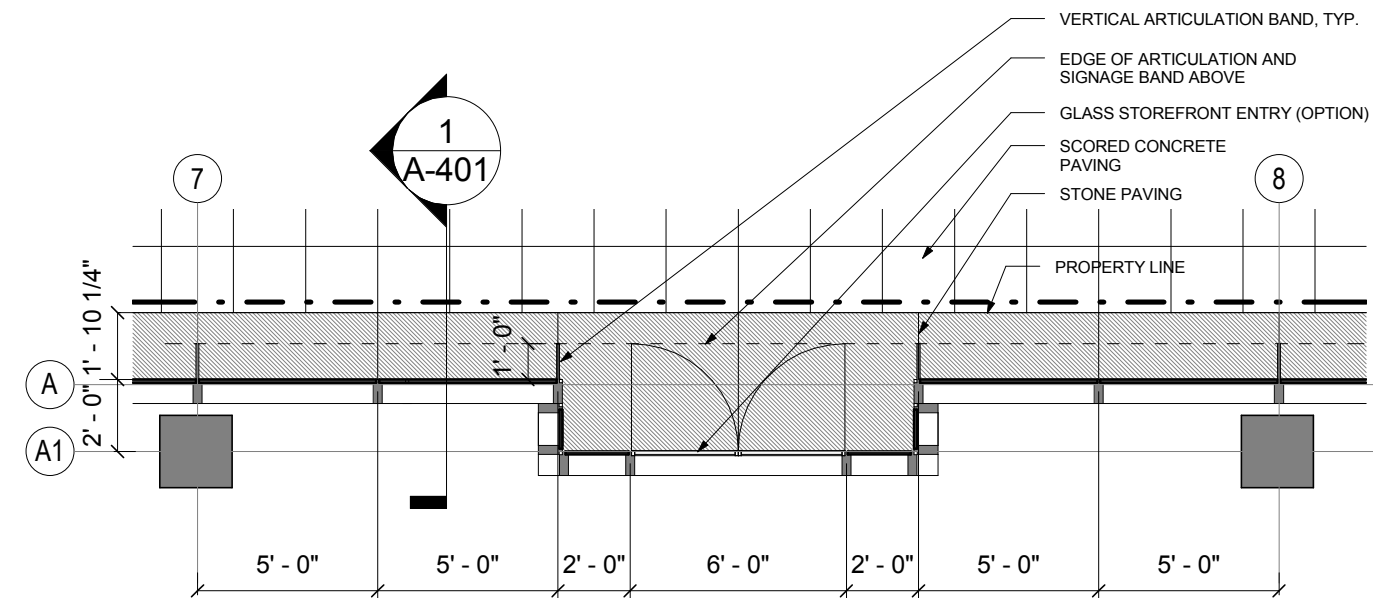
SCALE: 1/2" = 1'-0"



SECTION - NORTH FACADE LOWER LEVELS

SCALE: 3/16" = 1'-0"

1



QUANTITY, LOCATION, SWING, AND TYPE OF RETAIL DOORS SUBJECT TO CHANGE UPON DEVELOPMENT AND TENANT BUILD-OUT

ENLARGED PLAN- NORTH FACADE GROUND LEVEL

SCALE: 3/16" = 1'-0"

2

SITE  
75A

Washington, DC

THE GEORGE  
WASHINGTON  
UNIVERSITY  
WASHINGTON, DC

Gensler

2020 K Street, Northwest  
Suite 200  
Washington DC 20006  
Telephone 202.721.5200  
Facsimile 202.872.8587

Seal/Signature

Date

12/31/2012

Project Name

SITE 75A

ZC Case #

06-11G/06-12G

Project Number

09.7075.000

Description

DETAILS-  
NORTH  
FACADE  
LOWER  
LEVELS

Scale

As indicated

A-401  
© 2011 Gensler



**SITE  
75A**

Washington, DC

**THE GEORGE  
WASHINGTON  
UNIVERSITY**  
WASHINGTON, DC

**Gensler**

2020 K Street, Northwest  
Suite 200  
Washington DC 20006  
Telephone 202.721.5200  
Facsimile 202.872.8587

**Seal/Signature**

**Date**

12/31/2012

**Project Name**

SITE 75A

**ZC Case #**

06-11G/06-12G

**Project Number**

09.7075.000

**Description**

DETAILS-  
LOBBY

**Scale**

As indicated

**A-402**  
© 2011 Gensler

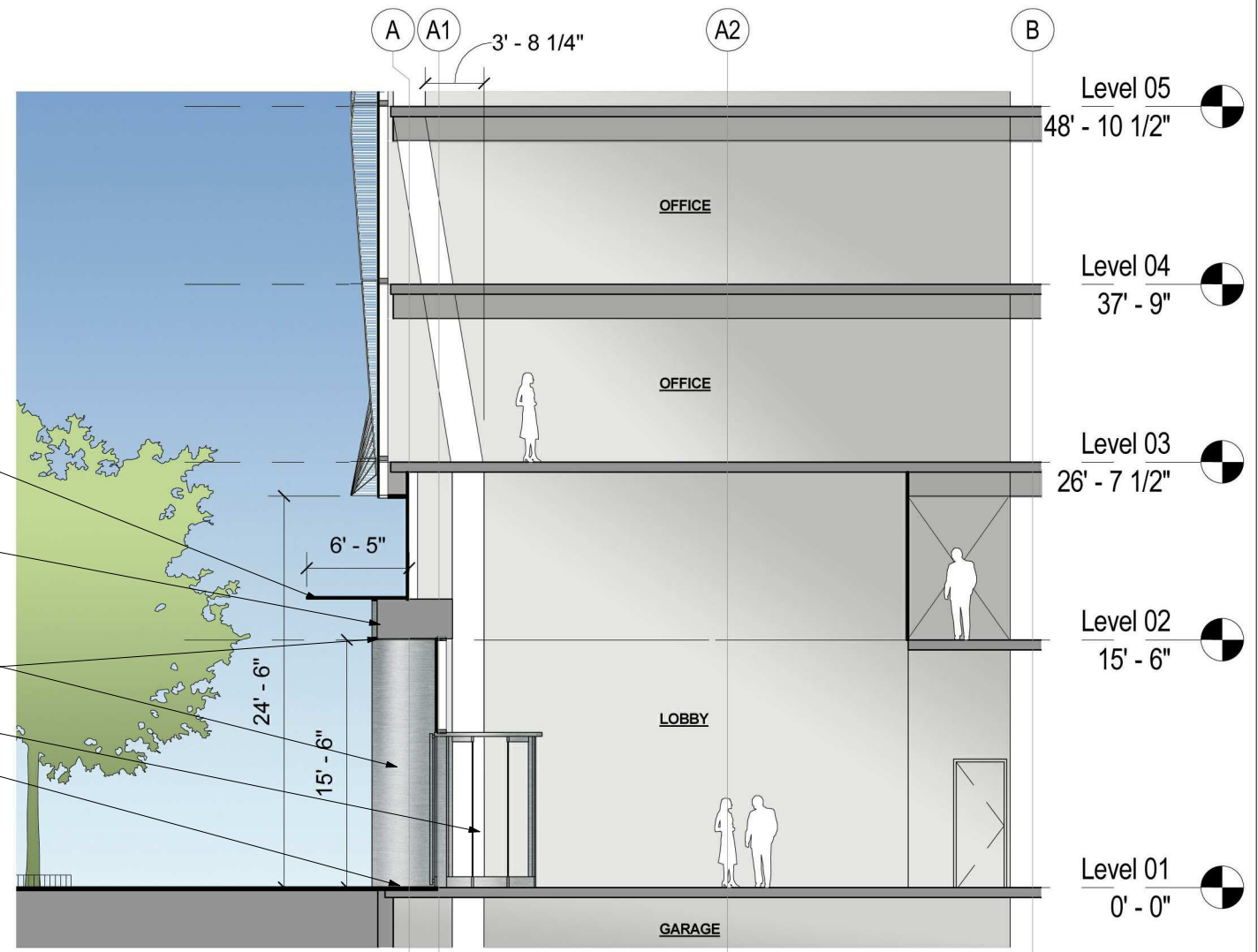


- GLASS CANOPY WITH METAL EDGE TRIM
- PIN MOUNTED BACK-LIT METAL ADDRESS SIGNAGE
- METAL PANELS
- GLASS REVOLVING DOOR
- STONE PAVING

**RENDERED VIEW OF ENTRY**

SCALE: NOT TO SCALE

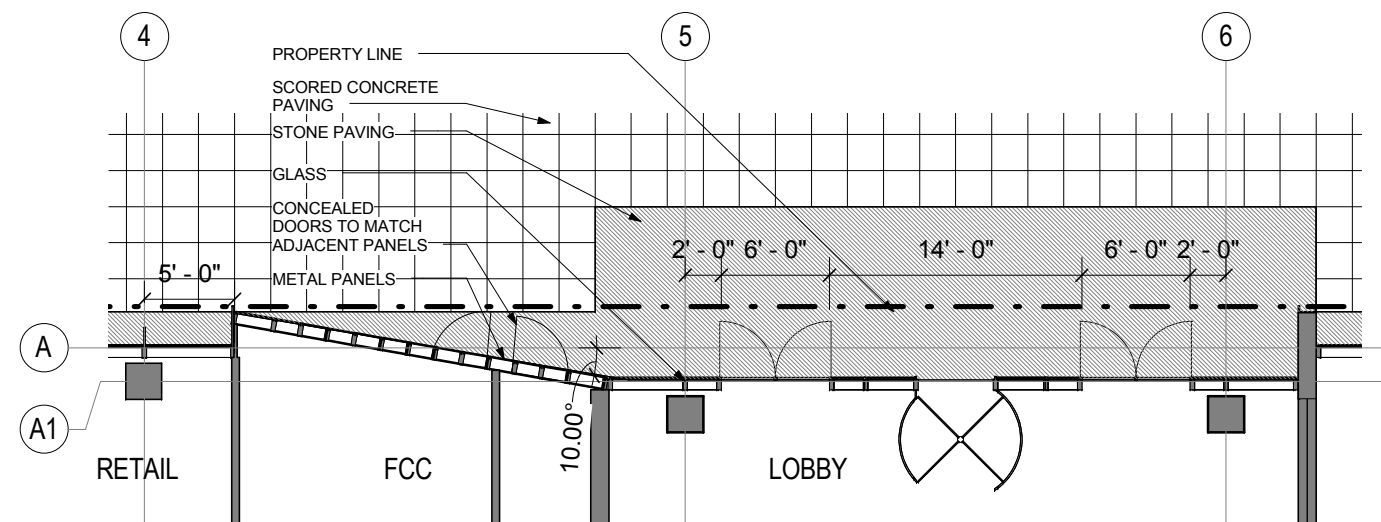
**3**



**LOBBY SECTION**

SCALE: 3/32" = 1'-0"

**1**



QUANTITY, LOCATION, SWING, AND TYPE OF RETAIL DOORS SUBJECT TO CHANGE UPON DEVELOPMENT AND TENANT BUILD-OUT  
STREETSCAPE DETAILS ARE SHOWN IN CONCEPT FOR ILLUSTRATIVE PURPOSES. THE FINAL DETAILS OF THE STREETSCAPE  
IMPROVEMENTS WILL BE SELECTED DURING DETAILED DESIGN PHASES OF WORK AND CONFORM WITH APPLICABLE DESIGN  
AND PERMITTING STANDARDS.

NOTE: INTERIOR LAYOUTS ARE ILLUSTRATIVE ONLY AND SUBJECT TO CHANGE ON FINAL PLAN AND SIGNAGE SHOWN FOR ILLUSTRATIVE PURPOSES ONLY

**ENTRY FROM PENNSYLVANIA AVENUE**

SCALE: NOT TO SCALE

**4**

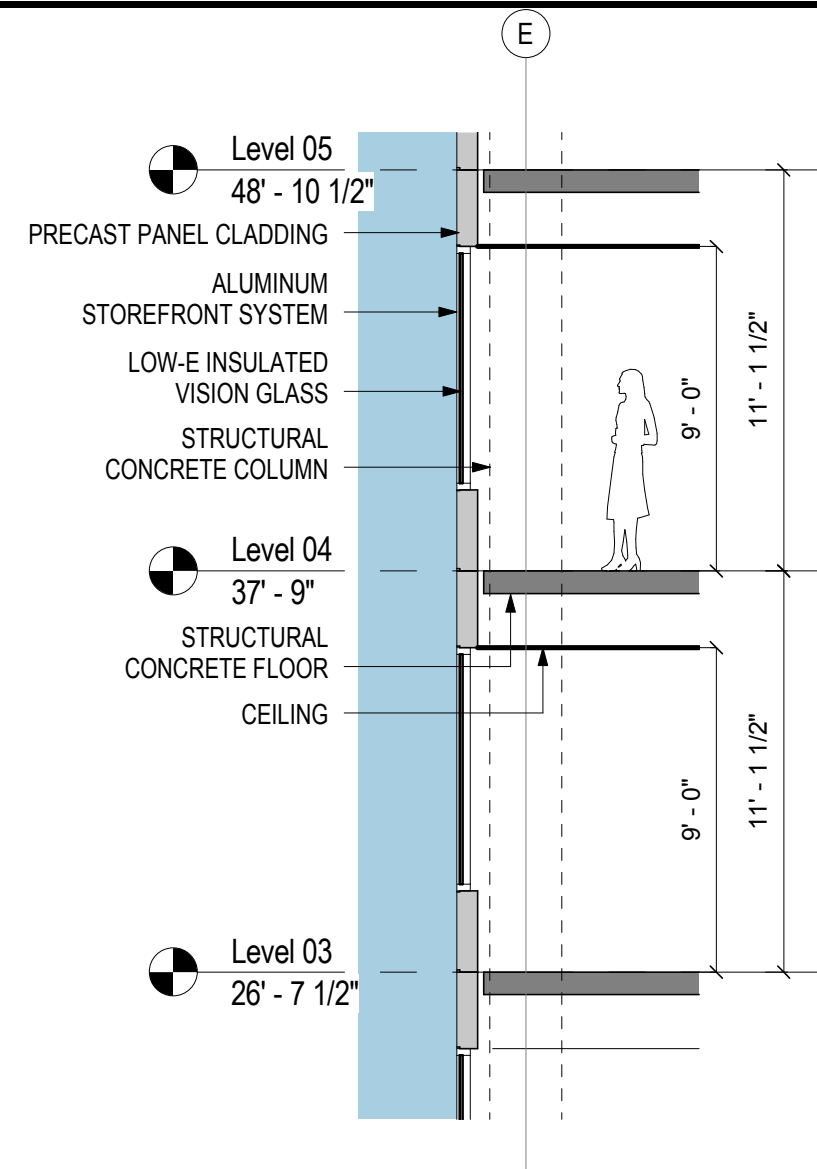
**ENLARGED PLAN- ENTRY**

SCALE: 3/32" = 1'-0"

**2**

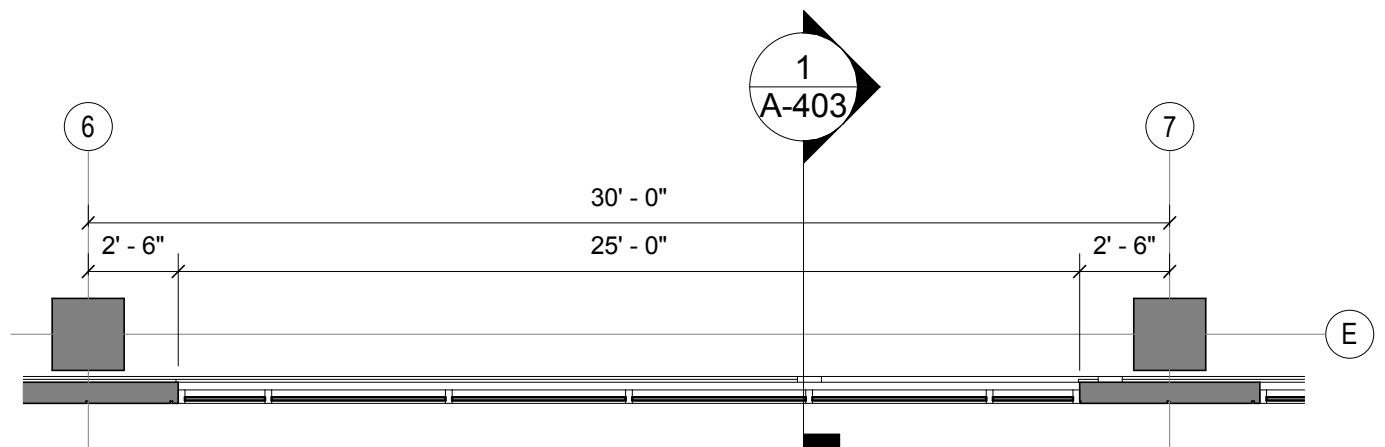


RENDERINGS- PRECAST CLADDING WITH RIBBON WINDOWS  
SCALE: 12" = 1'-0"



SECTION- PRECAST CLADDING WITH RIBBON WINDOWS

SCALE: 3/16" = 1'-0"



PLAN- PRECAST CLADDING WITH RIBBON WINDOWS

SCALE: 3/16" = 1'-0"

**SITE  
75A**

Washington, DC

**THE GEORGE  
WASHINGTON  
UNIVERSITY**  
WASHINGTON, DC

**Gensler**

2020 K Street, Northwest  
Suite 200  
Washington DC 20006  
Telephone 202.721.5200  
Facsimile 202.872.8587

**Seal/Signature**

**Date**

12/31/2012

**Project Name**

SITE 75A

**ZC Case #**

06-11G/06-12G

**Project Number**

09.7075.000

**Description**

DETAILS-  
SOUTH  
FACADE

**Scale**

As indicated

**A-403**

© 2011 Gensler

**SITE  
75A**

Washington, DC

**THE GEORGE  
WASHINGTON  
UNIVERSITY**

WASHINGTON, DC

**Gensler**

2020 K Street, Northwest  
Suite 200  
Washington DC 20006  
Telephone 202.721.5200  
Facsimile 202.872.8587

**Seal/Signature**

**Date**

12/31/2012

**Project Name**

SITE 75A

**ZC Case #**

06-11G/06-12G

**Project Number**

09.7075.000

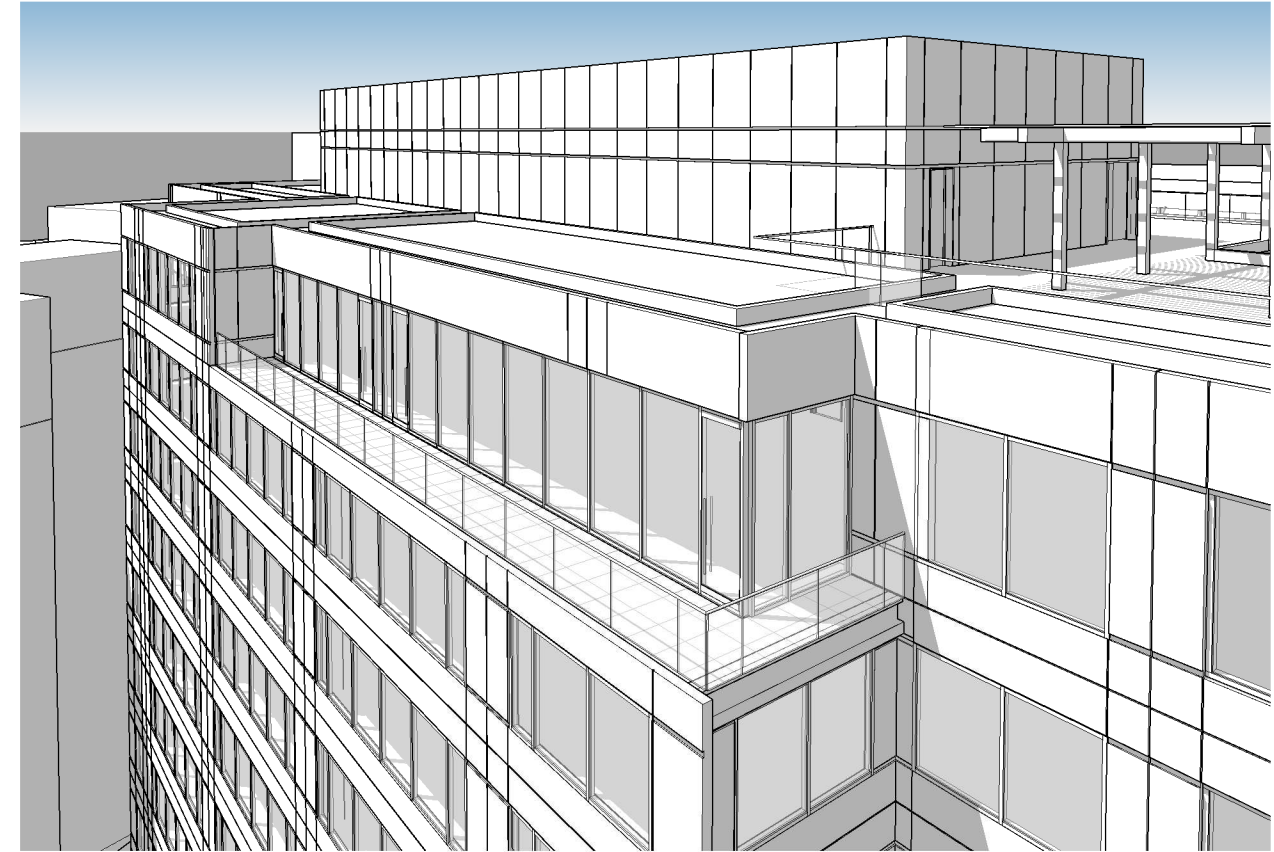
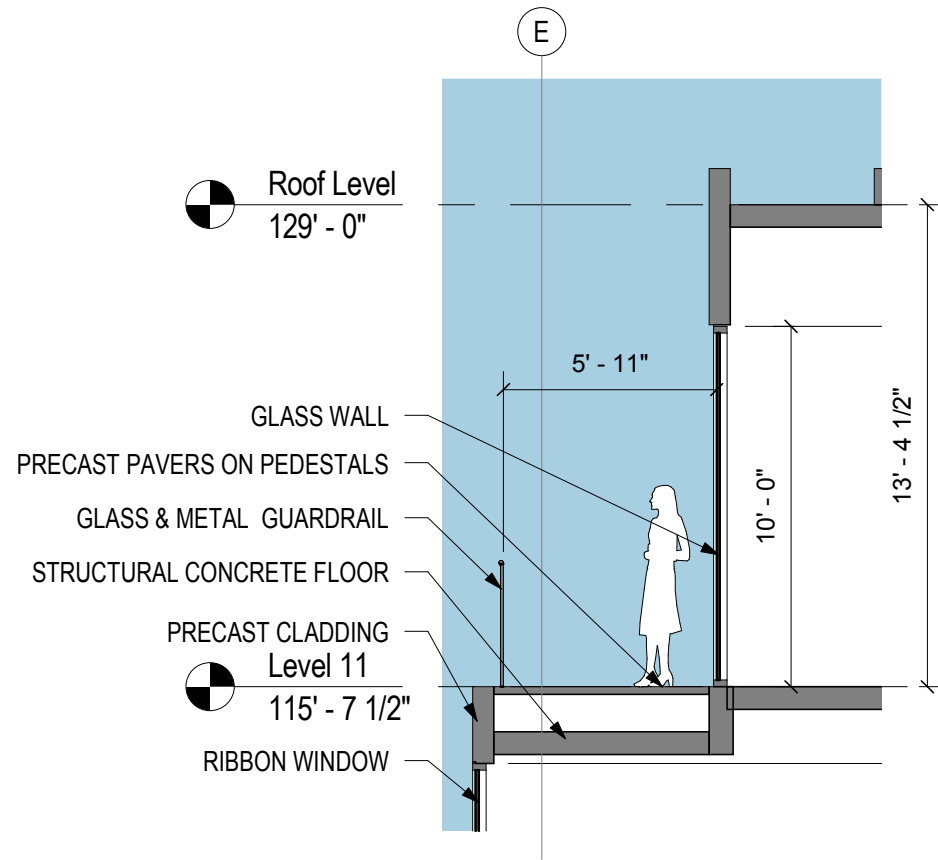
**Description**

DETAILS-  
11TH FLOOR  
TERRACE

**Scale**

As indicated

**A-404**  
© 2011 Gensler



**SECTION- 11TH FLOOR TERRACE**

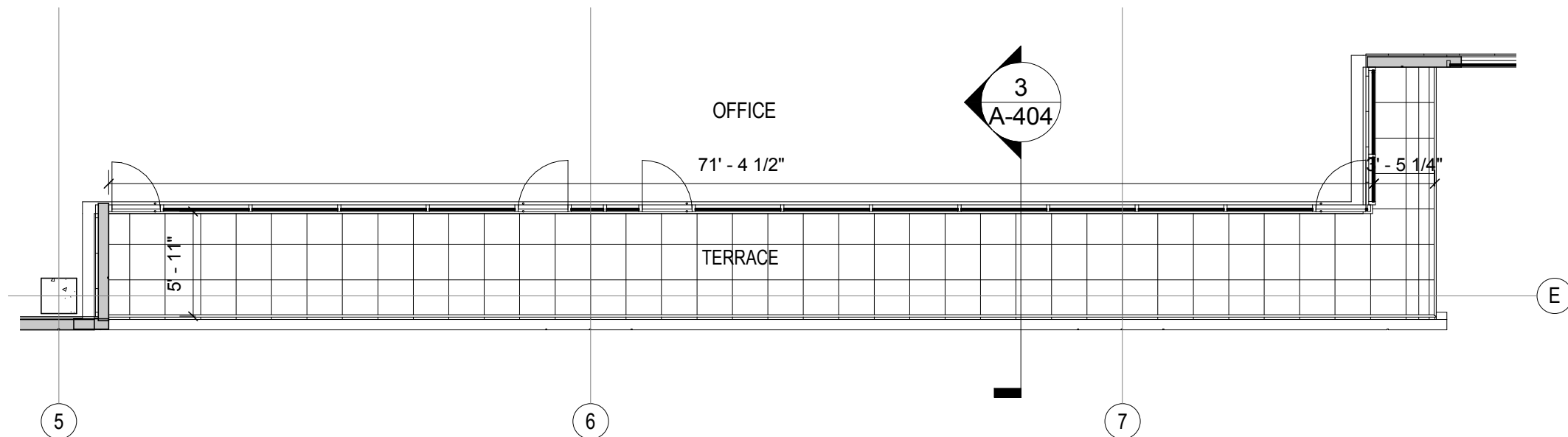
SCALE: 3/16" = 1'-0"

**3**

**AERIAL PERSPECTIVE- SE CORNER OF 11TH FLOOR TERRACE**

SCALE:

**1**



NOTE: QUANTITY, LOCATION, SWING, AND TYPE OF TERRACE ACCESS DOORS SUBJECT TO CHANGE UPON DEVELOPMENT AND TENANT BUILD-OUT

**ENLARGED PLAN - 11TH FLOOR TERRACE**

SCALE: 1/8" = 1'-0"

**2**