

**SITE
75A**

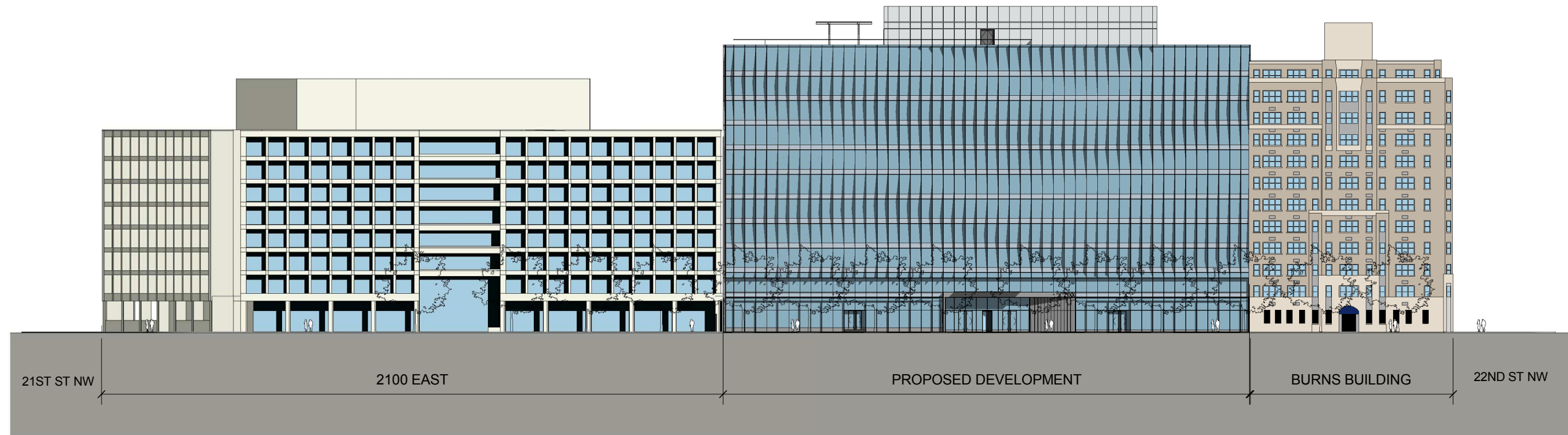
Washington, DC

**THE GEORGE
WASHINGTON
UNIVERSITY**
WASHINGTON, DC

Gensler

2020 K Street, Northwest
Suite 200
Washington DC 20006
Telephone 202.721.5200
Facsimile 202.872.8587

Seal/Signature

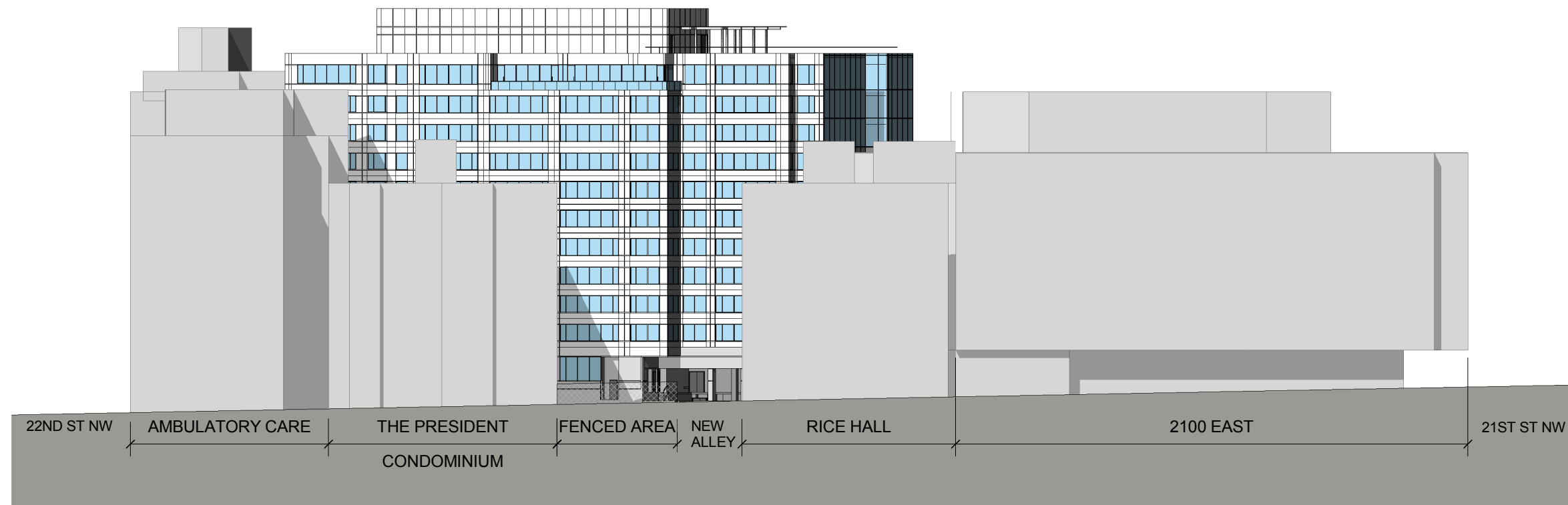


QUANTITY, LOCATION, SWING, AND TYPE OF RETAIL DOORS SUBJECT TO CHANGE UPON DEVELOPMENT AND TENANT BUILD-OUT

PENNSYLVANIA AVENUE ELEVATION

SCALE: 1" = 50'-0"

1



EYE STREET ELEVATION

SCALE: 1" = 50'-0"

2

Date

12/31/2012

Project Name

SITE 75A

ZC Case #

06-11G/06-12G

Project Number

09.7075.000

Description

BLOCK
ELEVATIONS

Scale

1" = 50'-0"

A-301
© 2011 Gensler

**SITE
75A**

Washington, DC

**THE GEORGE
WASHINGTON
UNIVERSITY**
WASHINGTON, DC

Gensler

2020 K Street, Northwest
Suite 200
Washington DC 20006
Telephone 202.721.5200
Facsimile 202.872.8587

Seal/Signature

Date

12/31/2012

Project Name

SITE 75A

ZC Case #

06-11G/06-12G

Project Number

09.7075.000

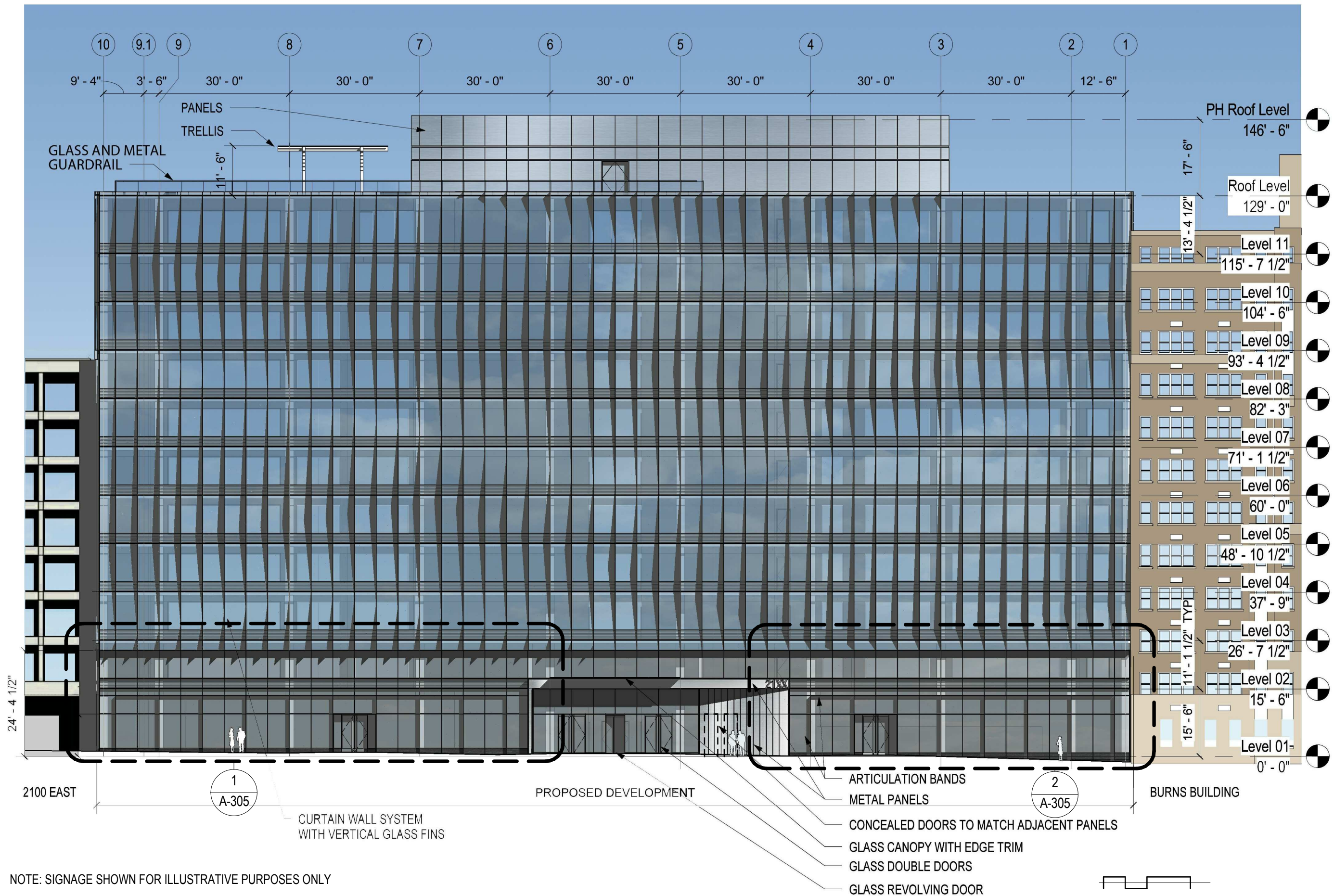
Description

ELEVATION-
NORTH

Scale

3/64" = 1'-0"

A-302
© 2011 Gensler

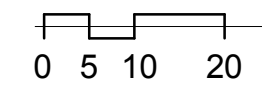


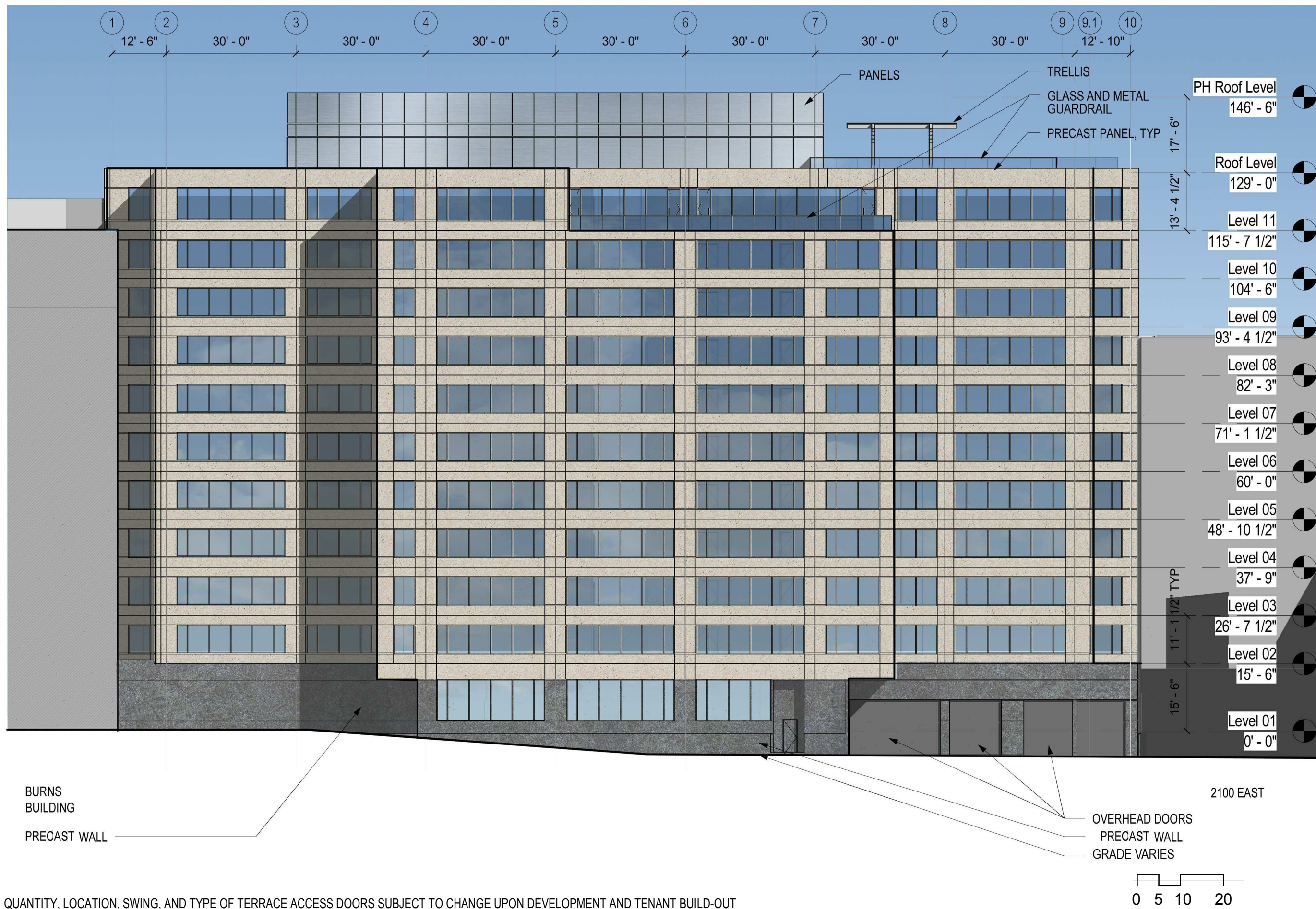
NOTE: SIGNAGE SHOWN FOR ILLUSTRATIVE PURPOSES ONLY

QUANTITY, LOCATION, SWING, AND TYPE OF RETAIL DOORS SUBJECT TO CHANGE UPON DEVELOPMENT AND TENANT BUILD-OUT

ELEVATION - NORTH

SCALE: 3/64" = 1'-0"





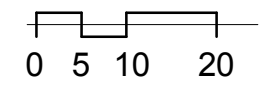
SITE 75A
 Washington, DC
THE GEORGE WASHINGTON UNIVERSITY
 WASHINGTON, DC

Gensler
 2020 K Street, Northwest
 Suite 200
 Washington DC 20006
 Telephone 202.721.5200
 Facsimile 202.872.8587
Seal/Signature

Date
 12/31/2012
Project Name
 SITE 75A
ZC Case #
 06-11G/06-12G
Project Number
 09.7075.000
Description
 ELEVATION-SOUTH

Scale
 3/64" = 1'-0"
A-303
 © 2011 Gensler

QUANTITY, LOCATION, SWING, AND TYPE OF TERRACE ACCESS DOORS SUBJECT TO CHANGE UPON DEVELOPMENT AND TENANT BUILD-OUT
ELEVATION - SOUTH
 SCALE: 3/64" = 1'-0"



**SITE
75A**

Washington, DC

**THE GEORGE
WASHINGTON
UNIVERSITY**
WASHINGTON, DC

Gensler

2020 K Street, Northwest
Suite 200
Washington DC 20006
Telephone 202.721.5200
Facsimile 202.872.8587

Seal/Signature

Date

12/31/2012

Project Name

SITE 75A

ZC Case #

06-11G/06-12G

Project Number

09.7075.000

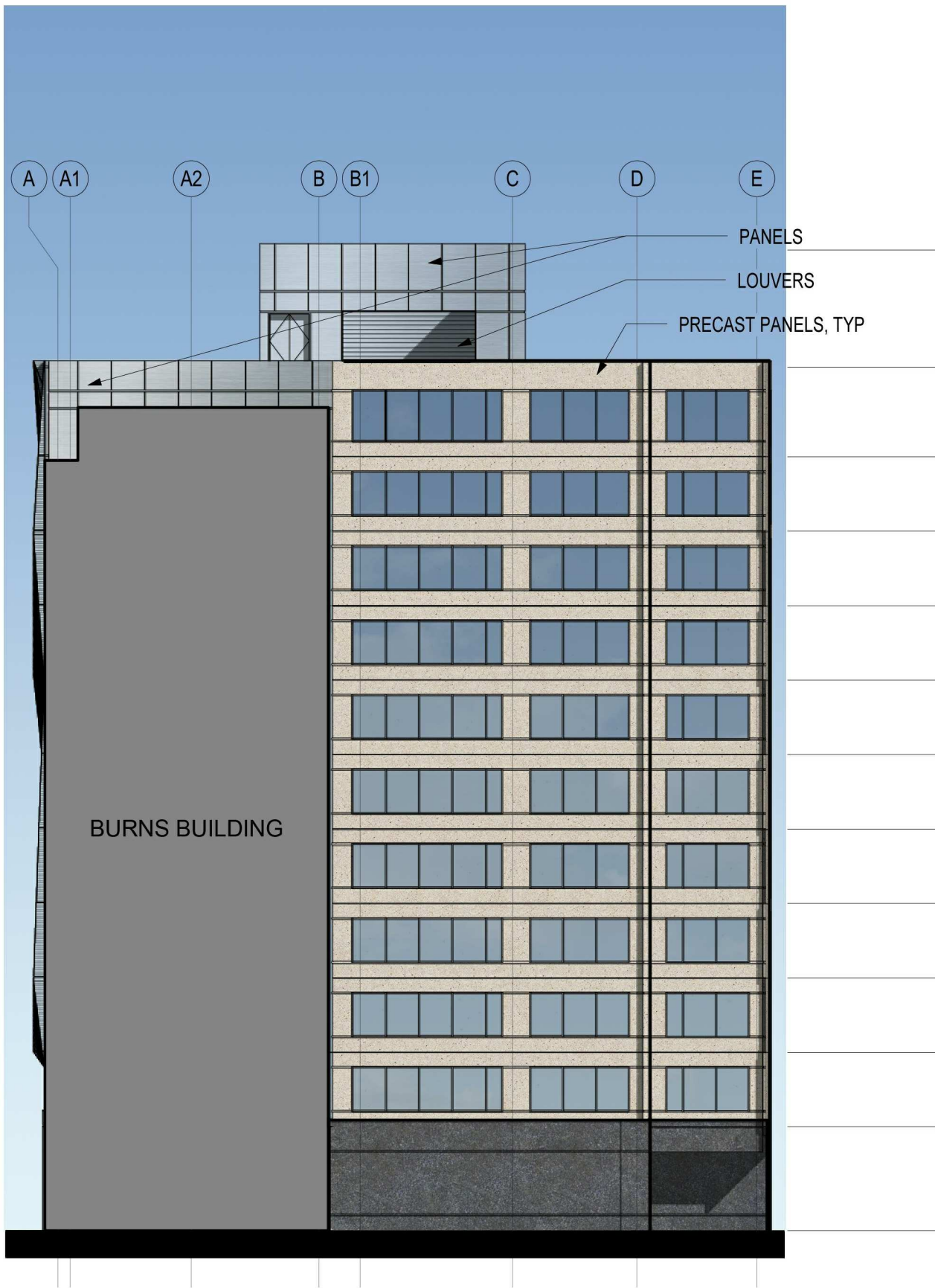
Description

ELEVATION-
EAST & WEST

Scale

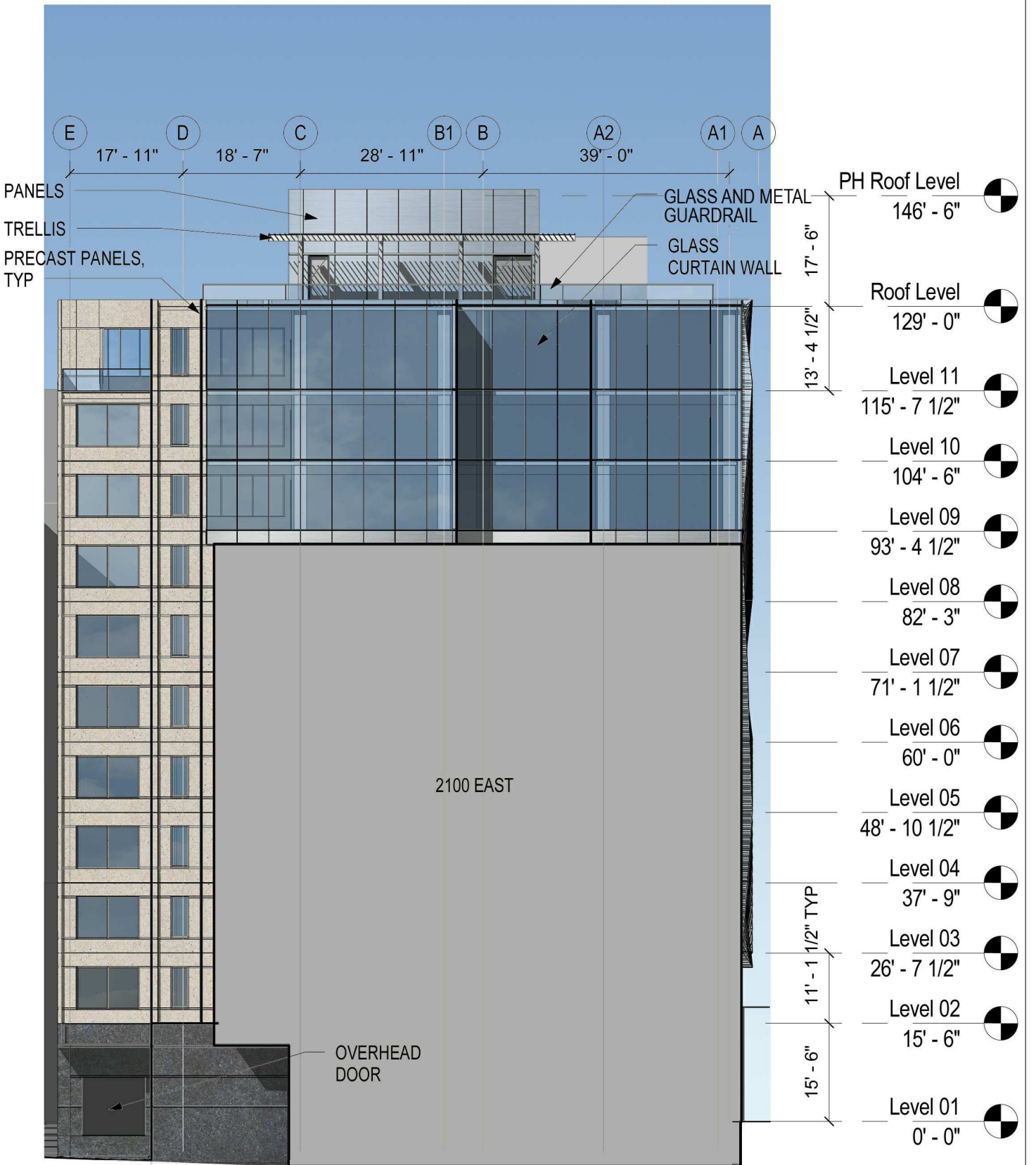
3/64" = 1'-0"

A-304
© 2011 Gensler



ELEVATION - WEST

SCALE: 3/64" = 1'-0"



ELEVATION - EAST

SCALE: 3/64" = 1'-0"

**SITE
75A**

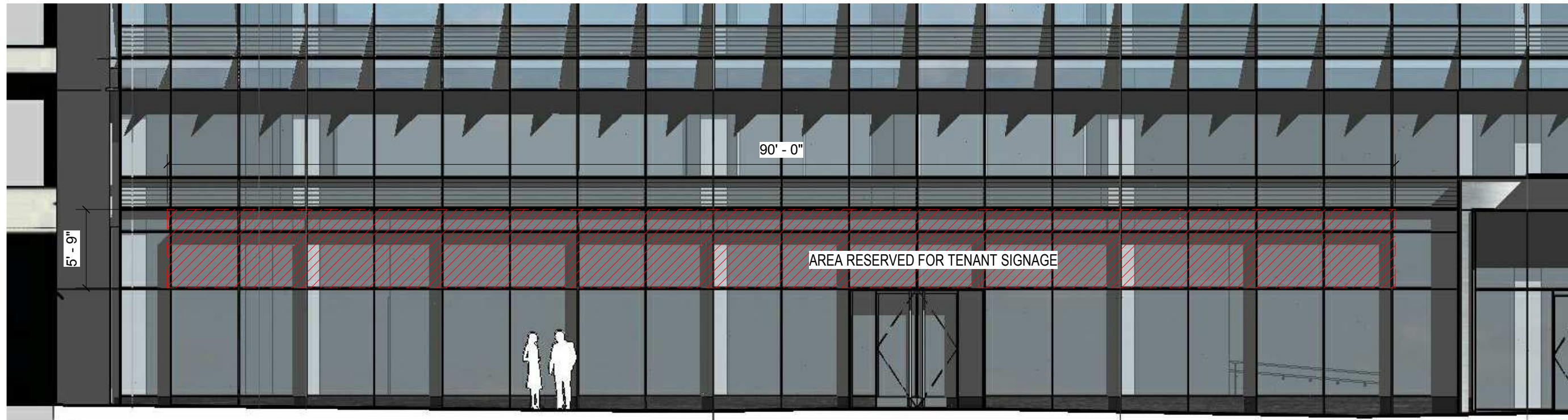
Washington, DC

**THE GEORGE
WASHINGTON
UNIVERSITY**
WASHINGTON, DC

Gensler

2020 K Street, Northwest
Suite 200
Washington DC 20006
Telephone 202.721.5200
Facsimile 202.872.8587

Seal/Signature



TENANT SIGNAGE LOCATIONS - EAST

SCALE: 1/8" = 1'-0"

1



NOTE: SIGNAGE SHOWN FOR ILLUSTRATIVE PURPOSES ONLY. QUANTITY, LOCATION, SWING, AND TYPE OF RETAIL DOORS SUBJECT TO CHANGE UPON DEVELOPMENT AND TENANT BUILD-OUT

TENANT SIGNAGE LOCATIONS - WEST

SCALE: 1/8" = 1'-0"

2

Date

12/31/2012

Project Name

SITE 75A

ZC Case #

06-11G/06-12G

Project Number

09.7075.000

Description

TENANT
SIGNAGE
LOCATIONS

Scale

1/8" = 1'-0"

A-305
© 2011 Gensler

SITE 75A

Washington, DC

THE GEORGE WASHINGTON UNIVERSITY

WASHINGTON, DC

Gensler

2020 K Street, Northwest
Suite 200
Washington DC 20006
Telephone 202.721.5200
Facsimile 202.872.8587

Seal/Signature

Date

12/31/2012

Project Name

SITE 75A

ZC Case

06-11G/06-12G

Project Number

09.7075.000

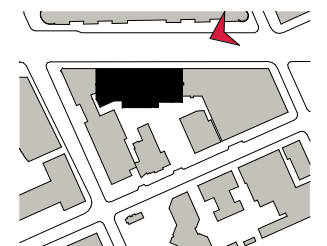
Description

EXTERIOR
RENDERINGS

Scale

As indicated

A-306
© 2011 Gensler



NOTE: SIGNAGE SHOWN FOR ILLUSTRATIVE PURPOSES ONLY. QUANTITY, LOCATION, SWING, AND TYPE OF RETAIL DOORS SUBJECT TO CHANGE UPON DEVELOPMENT AND TENANT BUILD-OUT

PERSPECTIVE- NORTH FACADE

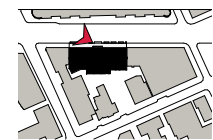
SCALE: NOT TO SCALE



NOTE: SIGNAGE SHOWN FOR ILLUSTRATIVE PURPOSES ONLY.
 STREETScape DETAILS ARE SHOWN IN CONCEPT FOR ILLUSTRATIVE PURPOSES. THE FINAL DETAILS OF THE STREETScape IMPROVEMENTS
 WILL BE SELECTED DURING DETAILED DESIGN PHASES OF WORK AND CONFORM WITH APPLICABLE DESIGN AND PERMITTING STANDARDS.

VIEW FROM SIDEWALK LOOKING SOUTHEAST

SCALE: NOT TO SCALE



**SITE
75A**

Washington, DC

**THE GEORGE
WASHINGTON
UNIVERSITY**
WASHINGTON, DC

Gensler

2020 K Street, Northwest
 Suite 200
 Washington DC 20006
 Telephone 202.721.5200
 Facsimile 202.872.8587

Seal/Signature

Date

12/31/2012

Project Name

SITE 75A

ZC Case #

06-11G/06-12G

Project Number

09.7075.000

Description

EXTERIOR
 RENDERINGS

Scale

As indicated

A-307

© 2011 Gensler