

**SITE
75A**

Washington, DC

**THE GEORGE
WASHINGTON
UNIVERSITY**

WASHINGTON, DC

Gensler

2020 K Street, Northwest
Suite 200
Washington DC 20006
Telephone 202.721.5200
Facsimile 202.872.8587

Seal/Signature

Date

12/31/2012

Project Name

SITE 75A

ZC Case #

06-11G/06-12G

Project Number

09.7075.000

Description

EXTERIOR
RENDERINGS

Scale

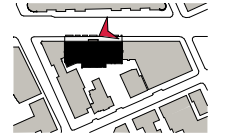
As indicated

A-308

© 2011 Gensler



NOTE: SIGNAGE SHOWN FOR ILLUSTRATIVE PURPOSES ONLY.
STREETSCAPE DETAILS ARE SHOWN IN CONCEPT FOR ILLUSTRATIVE PURPOSES. THE FINAL DETAILS OF THE STREETSCAPE IMPROVEMENTS
WILL BE SELECTED DURING DETAILED DESIGN PHASES OF WORK AND CONFORM WITH APPLICABLE DESIGN AND PERMITTING STANDARDS.



VIEW FROM SIDEWALK LOOKING WEST

SCALE: NOT TO SCALE

**SITE
75A**

Washington, DC

**THE GEORGE
WASHINGTON
UNIVERSITY**
WASHINGTON, DC

Gensler
2020 K Street, Northwest
Suite 200
Washington DC 20006
Telephone 202.721.5200
Facsimile 202.872.8587

Seal/Signature



NOTE: LOCATION OF GREEN ROOF AREAS AND CONFIGURATION OF TRELLIS ARE ILLUSTRATIVE ONLY AND SUBJECT TO CHANGE ON FINAL PLAN

ROOF TRELLIS

SCALE: NOT TO SCALE

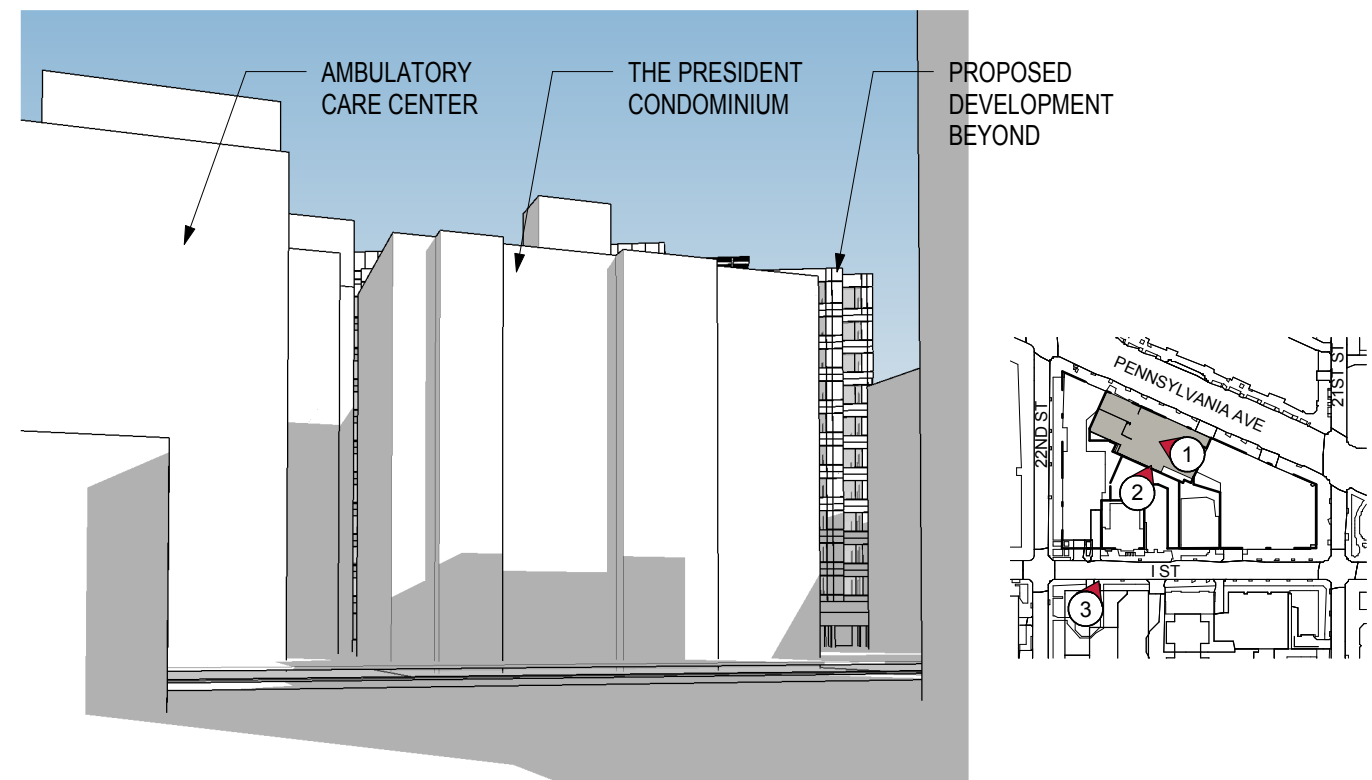
1



VIEW FROM THE PRESIDENT CONDOS AT FOURTH FLOOR

SCALE: NOT TO SCALE

4



VIEW FROM ACADEMIC CENTER

SCALE: NOT TO SCALE

3

Date

12/31/2012

Project Name

SITE 75A

ZC Case #

06-11G/06-12G

Project Number

09.7075.000

Description

ADDITIONAL
PERSPECTIVES

Scale

As indicated

A-309

© 2011 Gensler

SITE 75A

Washington, DC

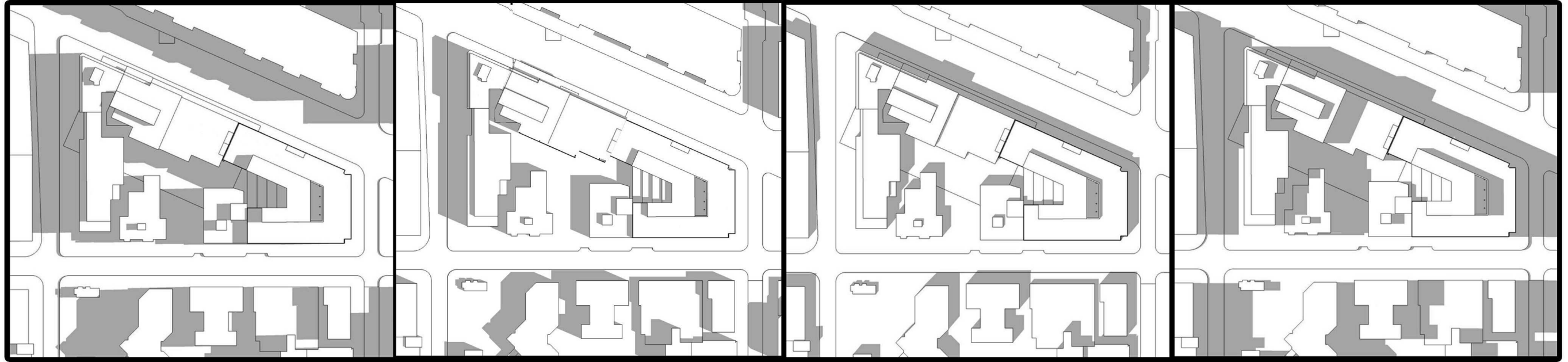
**THE GEORGE
WASHINGTON
UNIVERSITY**
WASHINGTON, DC

Gensler

2020 K Street, Northwest
Suite 200
Washington DC 20006
Telephone 202.721.5200
Facsimile 202.872.8587

Seal/Signature

AS APPROVED UNDER THE FIRST-STAGE PUD (SITE 75A ONLY)



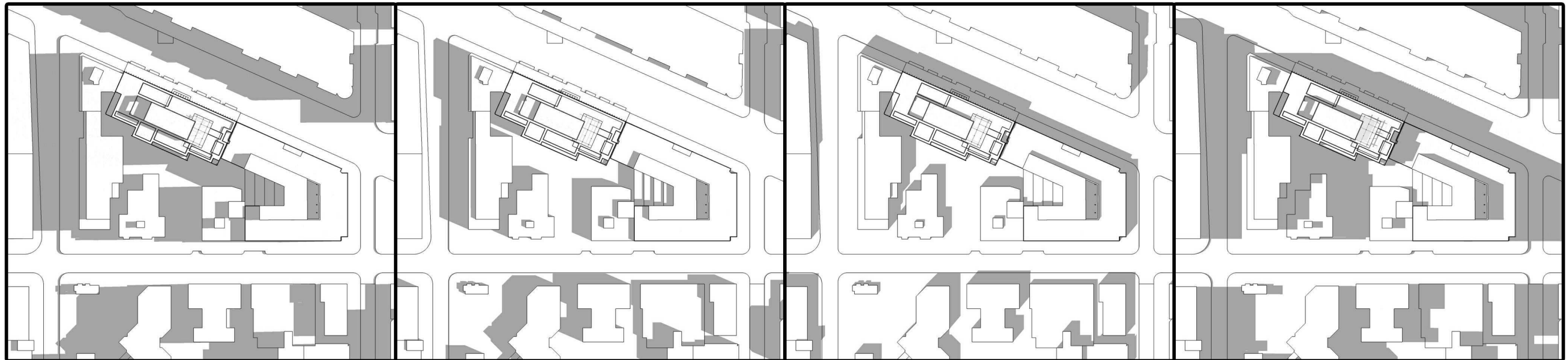
8AM

10AM

1PM

4PM

AS PROPOSED WITH THE MODIFICATION OF THE FIRST-STAGE PUD AND RELATED REZONING (SITE 75A + 2100 WEST)



8AM

10AM

1PM

4PM

Date

12/31/2012

Project Name

SITE 75A

ZC Case

06-11G/06-12G

Project Number

09.7075.000

Description

SHADOW
STUDIES -
SUMMER

Scale

6" = 1'-0"

A-310
© 2011 Gensler

AS APPROVED UNDER THE FIRST-STAGE PUD (SITE 75A ONLY)



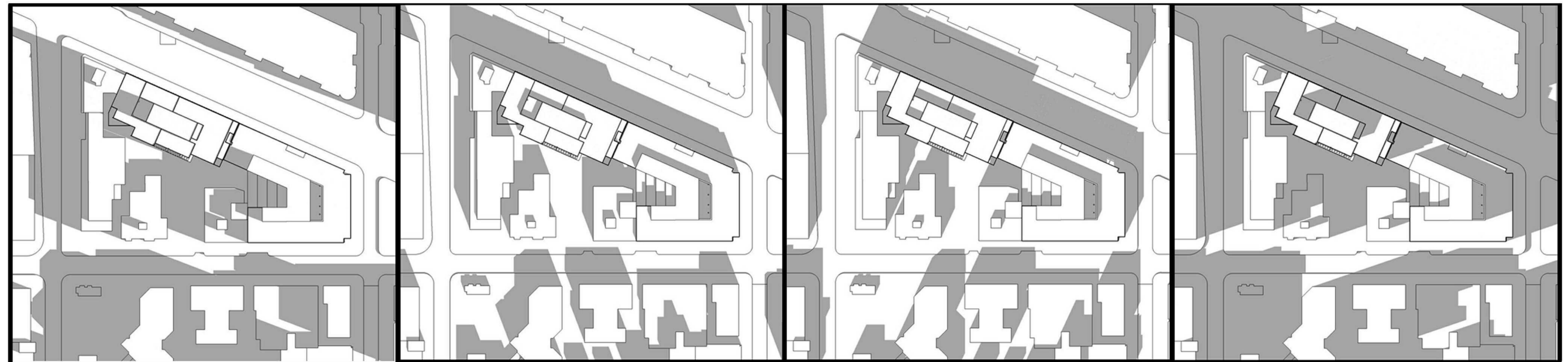
8AM

10AM

1PM

4PM

AS PROPOSED WITH THE MODIFICATION OF THE FIRST-STAGE PUD AND RELATED REZONING (SITE 75A + 2100 WEST)



8AM

10AM

1PM

4PM

SITE 75A

Washington, DC

THE GEORGE WASHINGTON UNIVERSITY
WASHINGTON, DC

Gensler

2020 K Street, Northwest
Suite 200
Washington DC 20006
Telephone 202.721.5200
Facsimile 202.872.8587

Seal/Signature

Date

12/31/2012

Project Name

SITE 75A

ZC Case #

06-11G/06-12G

Project Number

09.7075.000

Description

SHADOW STUDIES -
SPRING &
FALL

Scale

6" = 1'-0"

A-311

© 2011 Gensler

SITE 75A

Washington, DC

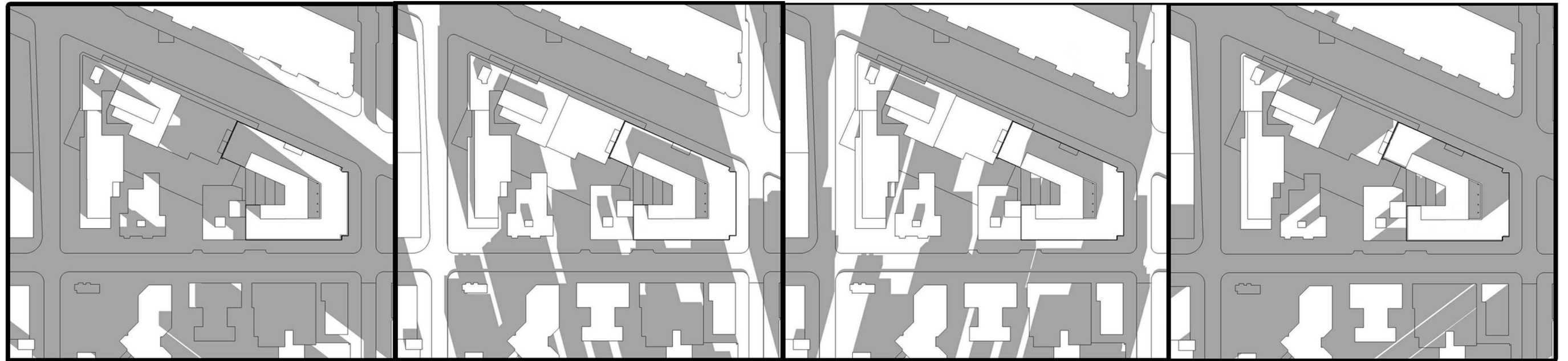
THE GEORGE WASHINGTON UNIVERSITY
WASHINGTON, DC

Gensler

2020 K Street, Northwest
Suite 200
Washington DC 20006
Telephone 202.721.5200
Facsimile 202.872.8587

Seal/Signature

AS APPROVED UNDER THE FIRST-STAGE PUD (SITE 75A ONLY)



8AM

10AM

1PM

4PM

AS PROPOSED WITH THE MODIFICATION OF THE FIRST-STAGE PUD AND RELATED REZONING (SITE 75A + 2100 WEST)



8AM

10AM

1PM

4PM

Date

12/31/2012

Project Name

SITE 75A

ZC Case

06-11G/06-12G

Project Number

09.7075.000

Description

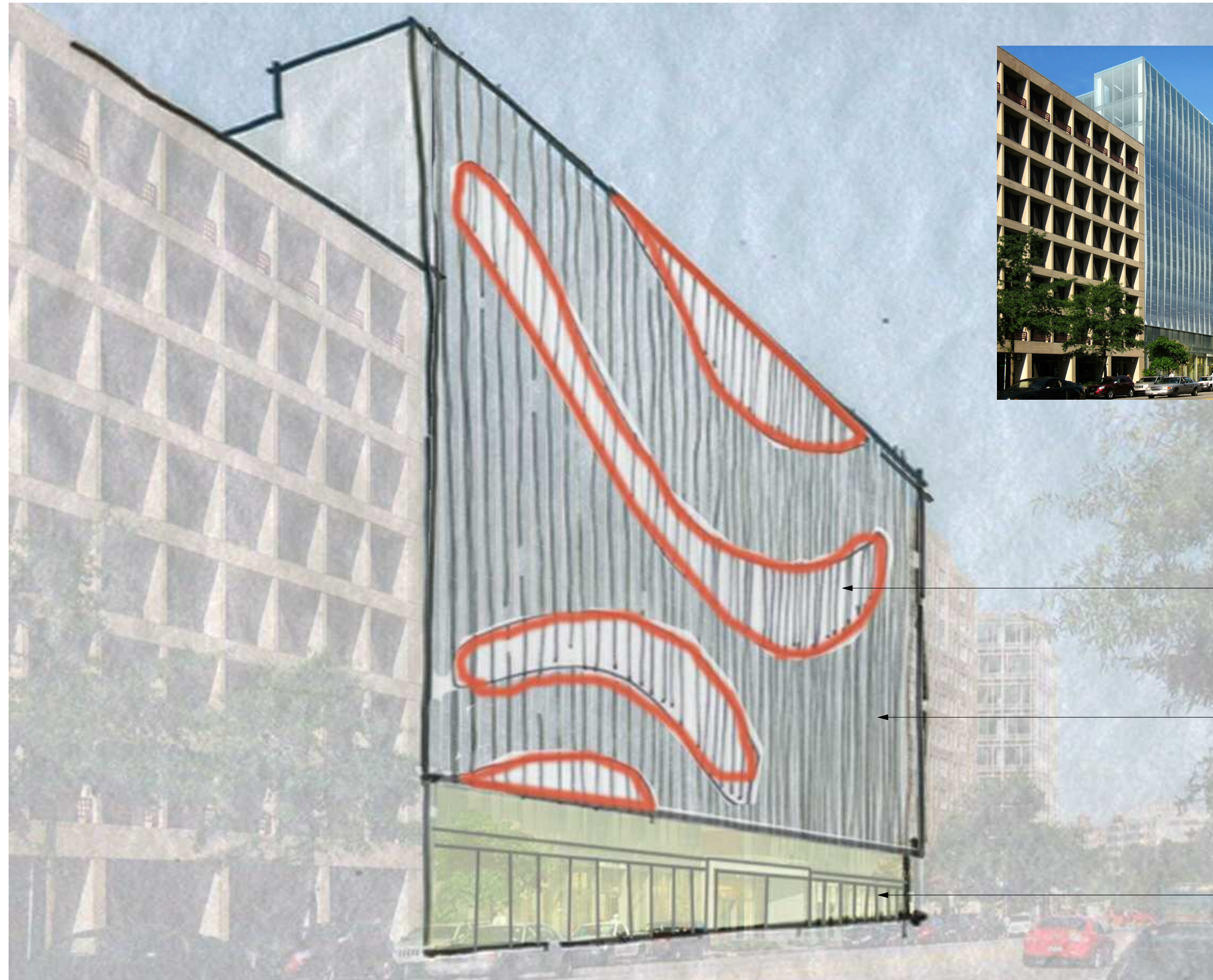
SHADOW STUDIES - WINTER

Scale

6" = 1'-0"

A-312
© 2011 Gensler

SHADOW STUDIES - WINTER SOLSTICE
SCALE: NOT TO SCALE



MEDIUM-SCALE INTERVENTIONS
(AREAS OF FIN PROJECTION)

FINE-GRAIN ELEMENTS
(VERTICAL GLASS FINNS WITH METAL CAPS)

FACADE BASE WITH STREET LEVEL
INTEREST

**SITE
75A**

Washington, DC

**THE GEORGE
WASHINGTON
UNIVERSITY**

WASHINGTON, DC

Gensler

2020 K Street, Northwest
Suite 200
Washington DC 20006
Telephone 202.721.5200
Facsimile 202.872.8587

Seal/Signature

Date

12/31/2012

Project Name

SITE 75A

ZC Case #

06-11G/06-12G

Project Number

09.7075.000

Description

FACADE
DIAGRAM

Scale

12" = 1'-0"

**SITE
75A**

Washington, DC

**THE GEORGE
WASHINGTON
UNIVERSITY**
WASHINGTON, DC

Gensler

2020 K Street, Northwest
Suite 200
Washington DC 20006
Telephone 202.721.5200
Facsimile 202.872.8587

Seal/Signature

Date

12/31/2012

Project Name

SITE 75A

ZC Case #

06-11G/06-12G

Project Number

09.7075.000

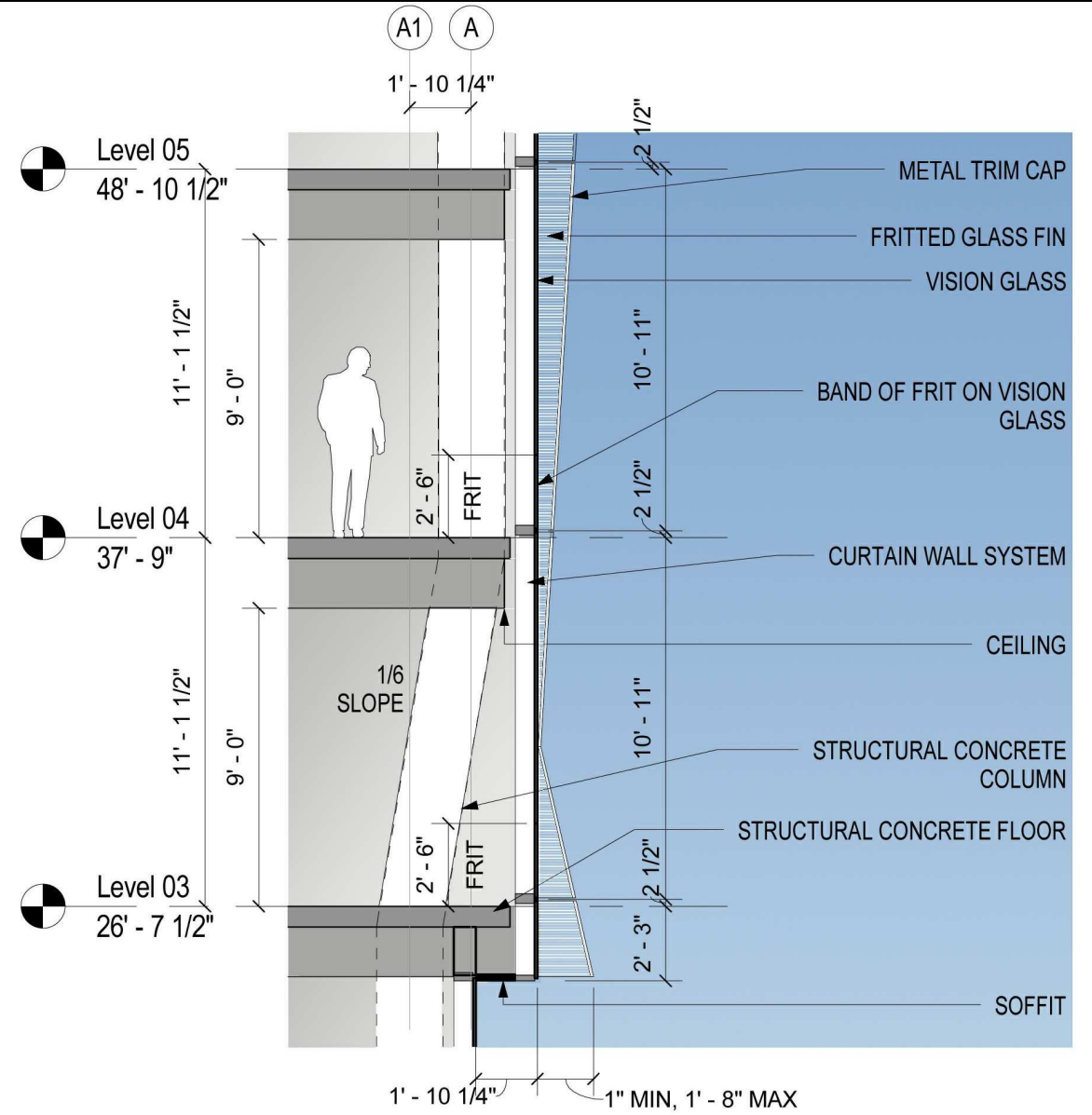
Description

DETAILS-
NORTH
FACADE
UPPER
LEVELS

Scale

As indicated

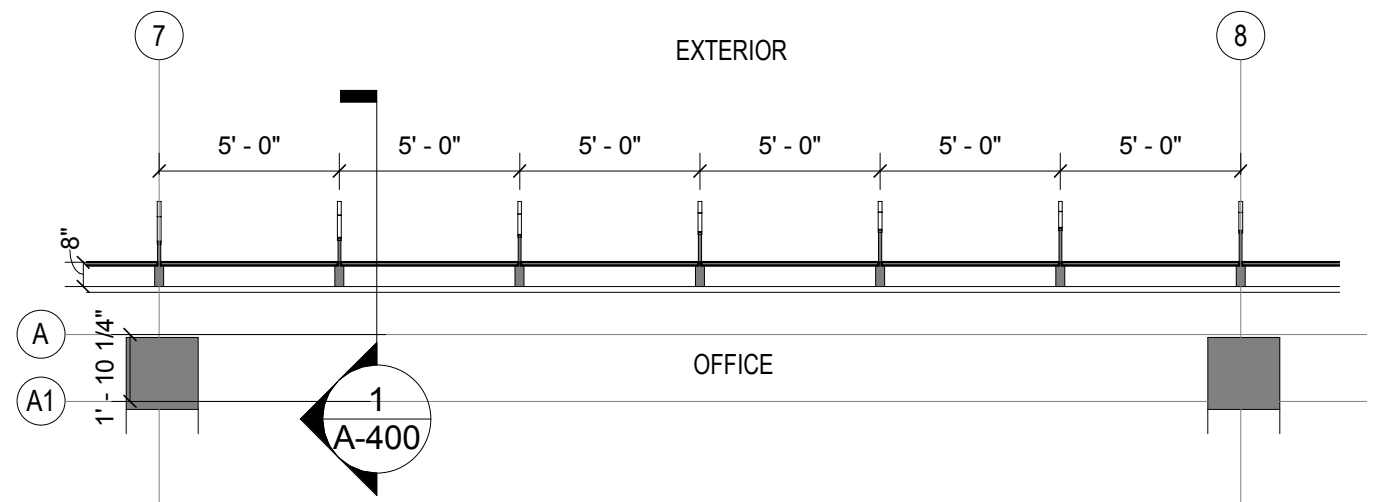
A-400
© 2011 Gensler



SECTION - CURTAIN WALL WITH GLASS FINES

SCALE: 3/16" = 1'-0"

1



PLAN - CURTAIN WALL WITH GLASS FINES

SCALE: 3/16" = 1'-0"

2

RENDERINGS - CURTAIN WALL WITH GLASS FINES

SCALE: 3" = 1'-0"

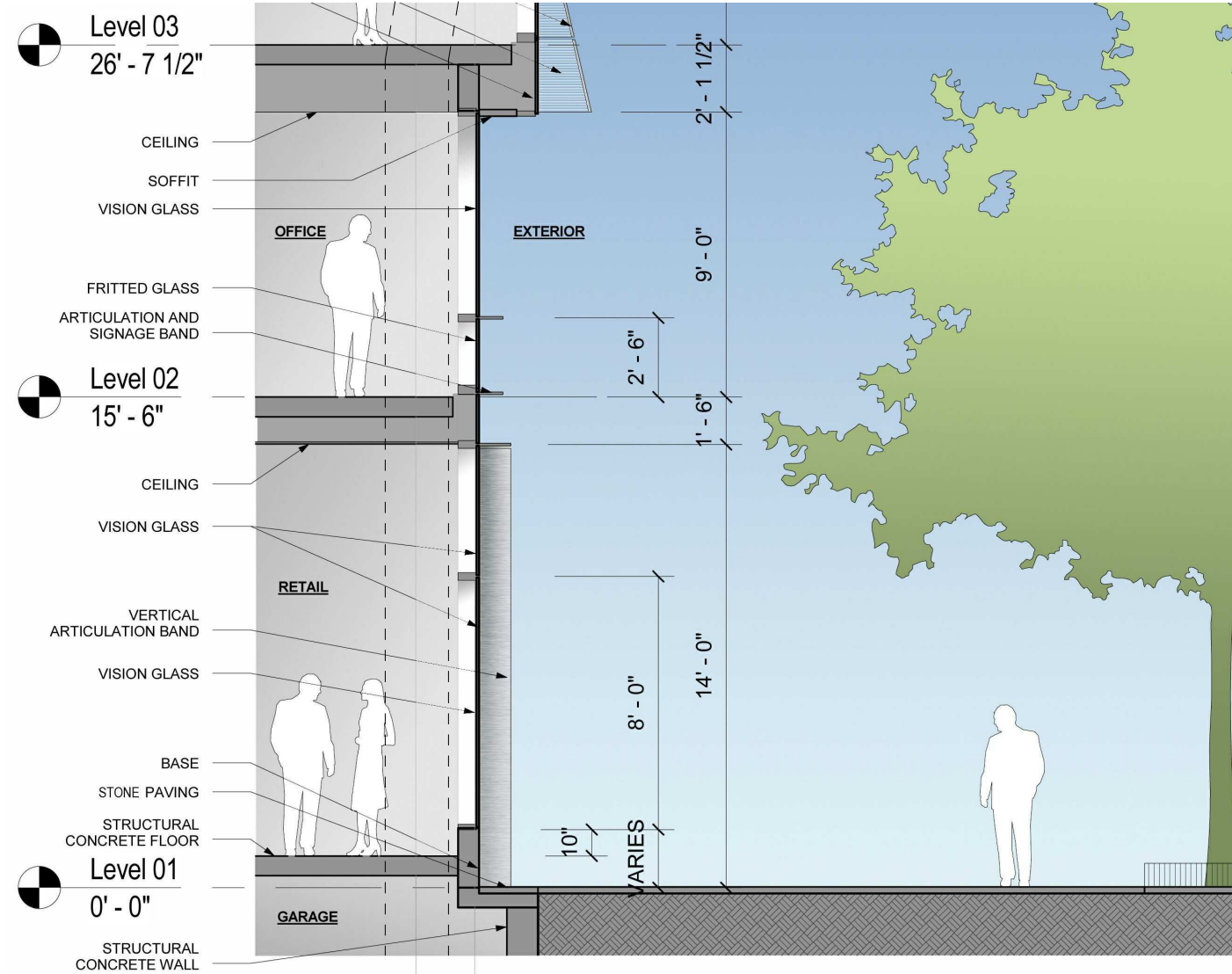
3



NOTE: SIGNAGE SHOWN FOR ILLUSTRATION PURPOSES ONLY.
 NOTE: STREETScape DETAILS ARE SHOWN IN CONCEPT FOR ILLUSTRATIVE PURPOSES. THE FINAL DETAILS OF THE STREETScape IMPROVEMENTS WILL BE SELECTED DURING DETAILED DESIGN PHASES OF WORK AND CONFORM WITH APPLICABLE DESIGN AND PERMITTING STANDARDS.

RENDERED VIEW OF NORTH FACADE GROUND LEVEL

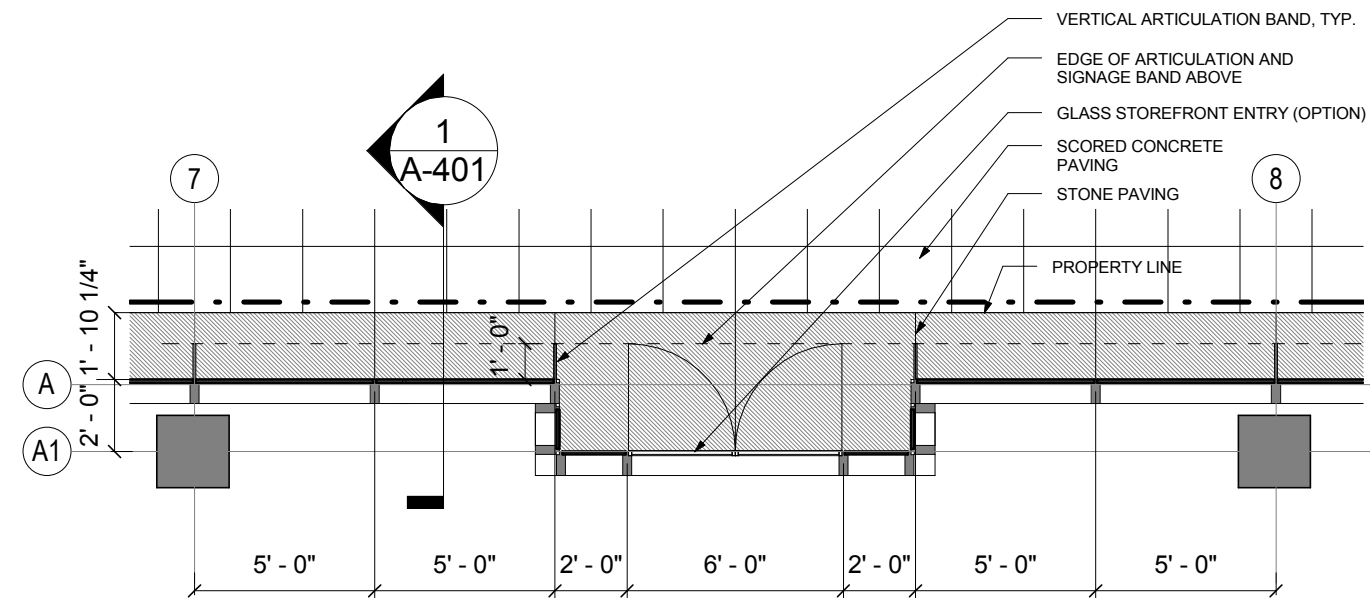
SCALE: 1/2" = 1'-0"



SECTION - NORTH FACADE LOWER LEVELS

SCALE: 3/16" = 1'-0"

1



QUANTITY, LOCATION, SWING, AND TYPE OF RETAIL DOORS SUBJECT TO CHANGE UPON DEVELOPMENT AND TENANT BUILD-OUT

ENLARGED PLAN - NORTH FACADE GROUND LEVEL

SCALE: 3/16" = 1'-0"

2

SITE
75A

Washington, DC

THE GEORGE
WASHINGTON
UNIVERSITY
WASHINGTON, DC

Gensler

2020 K Street, Northwest
Suite 200
Washington DC 20006
Telephone 202.721.5200
Facsimile 202.872.8587

Seal/Signature

Date

12/31/2012

Project Name

SITE 75A

ZC Case #

06-11G/06-12G

Project Number

09.7075.000

Description

DETAILS-
NORTH
FACADE
LOWER
LEVELS

Scale

As indicated

A-401
© 2011 Gensler

**SITE
75A**

Washington, DC

**THE GEORGE
WASHINGTON
UNIVERSITY**
WASHINGTON, DC

Gensler

2020 K Street, Northwest
Suite 200
Washington DC 20006
Telephone 202.721.5200
Facsimile 202.872.8587

Seal/Signature

Date

12/31/2012

Project Name

SITE 75A

ZC Case #

06-11G/06-12G

Project Number

09.7075.000

Description

DETAILS-
LOBBY

Scale

As indicated

A-402
© 2011 Gensler

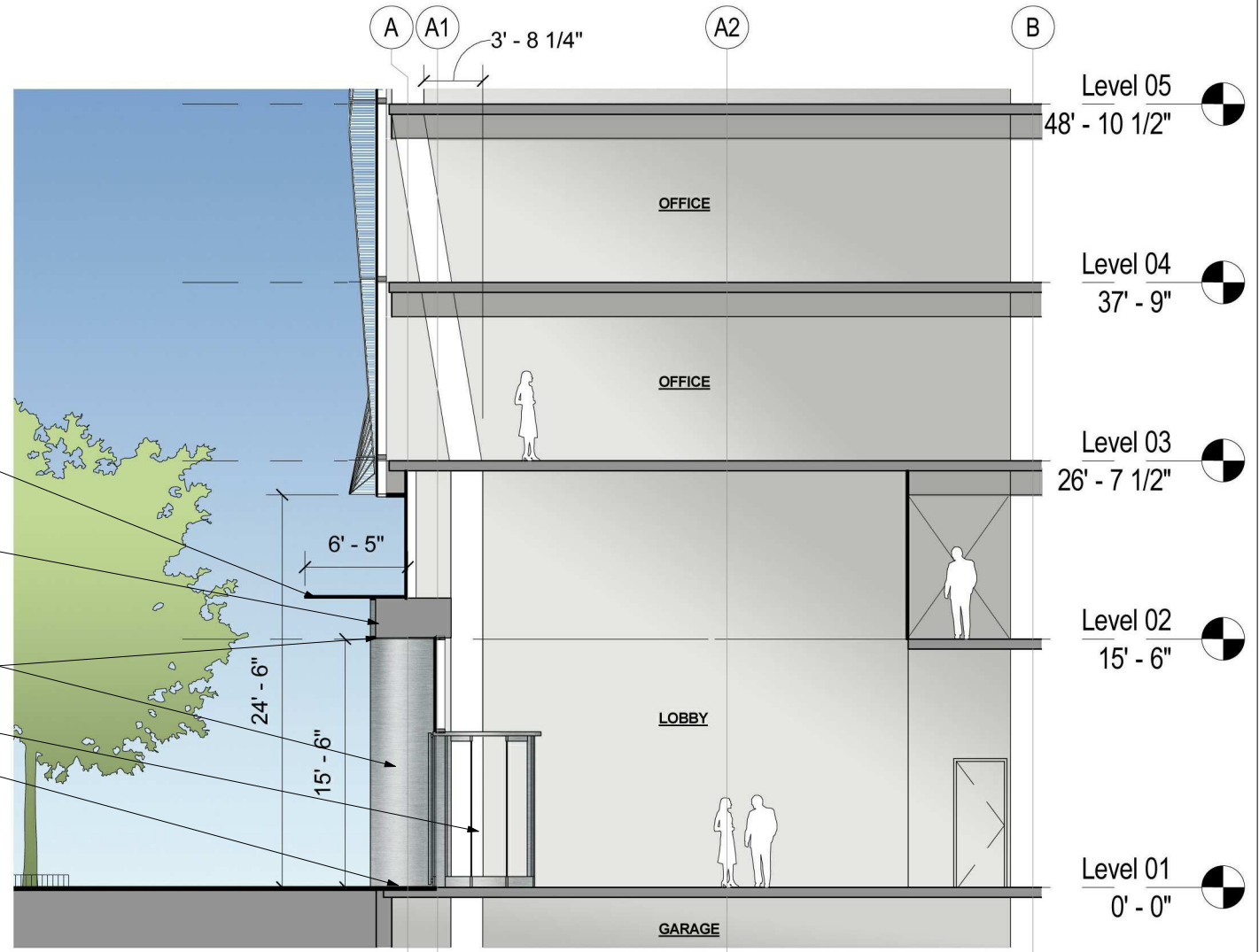


- GLASS CANOPY WITH METAL EDGE TRIM
- PIN MOUNTED BACK-LIT METAL ADDRESS SIGNAGE
- METAL PANELS
- GLASS REVOLVING DOOR
- STONE PAVING

RENDERED VIEW OF ENTRY

SCALE: NOT TO SCALE

3



LOBBY SECTION

SCALE: 3/32" = 1'-0"

1



NOTE: INTERIOR LAYOUTS ARE ILLUSTRATIVE ONLY AND SUBJECT TO CHANGE ON FINAL PLAN AND SIGNAGE SHOWN FOR ILLUSTRATIVE PURPOSES ONLY

ENTRY FROM PENNSYLVANIA AVENUE

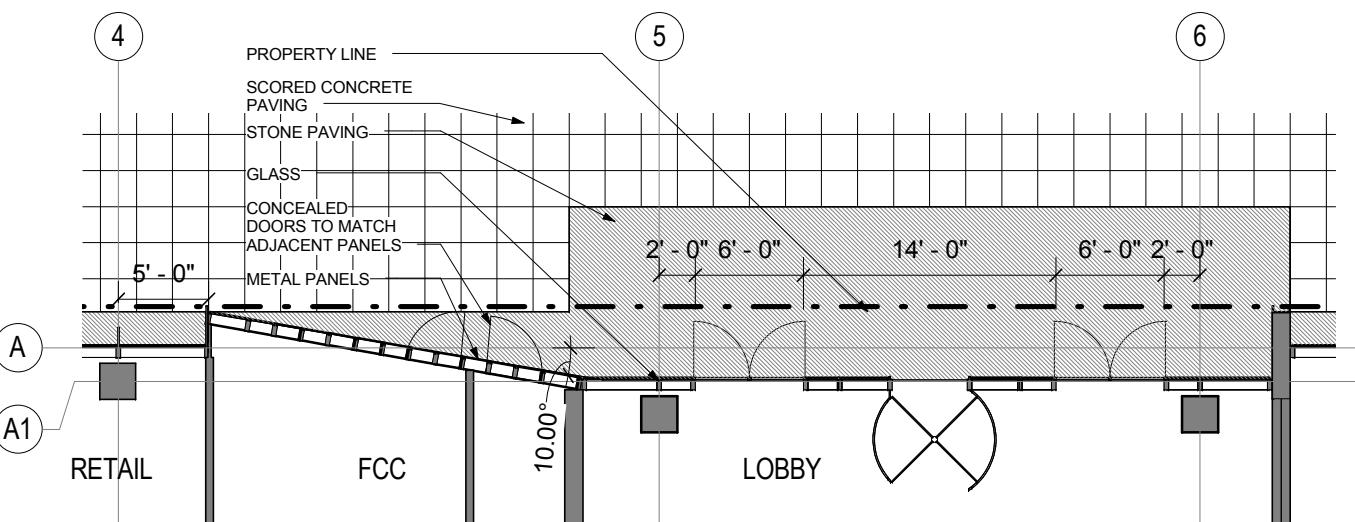
SCALE: NOT TO SCALE

4

ENLARGED PLAN- ENTRY

SCALE: 3/32" = 1'-0"

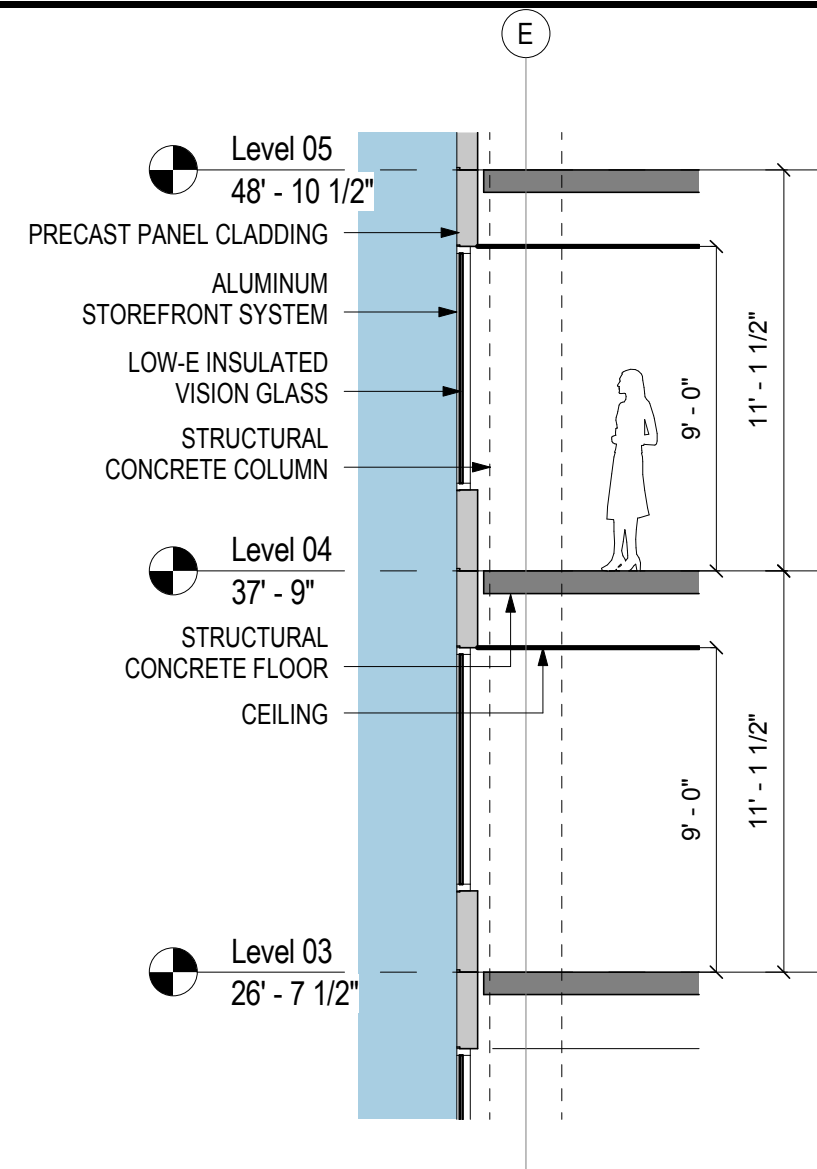
2



QUANTITY, LOCATION, SWING, AND TYPE OF RETAIL DOORS SUBJECT TO CHANGE UPON DEVELOPMENT AND TENANT BUILD-OUT. STREETSCAPE DETAILS ARE SHOWN IN CONCEPT FOR ILLUSTRATIVE PURPOSES. THE FINAL DETAILS OF THE STREETSCAPE IMPROVEMENTS WILL BE SELECTED DURING DETAILED DESIGN PHASES OF WORK AND CONFORM WITH APPLICABLE DESIGN AND PERMITTING STANDARDS.

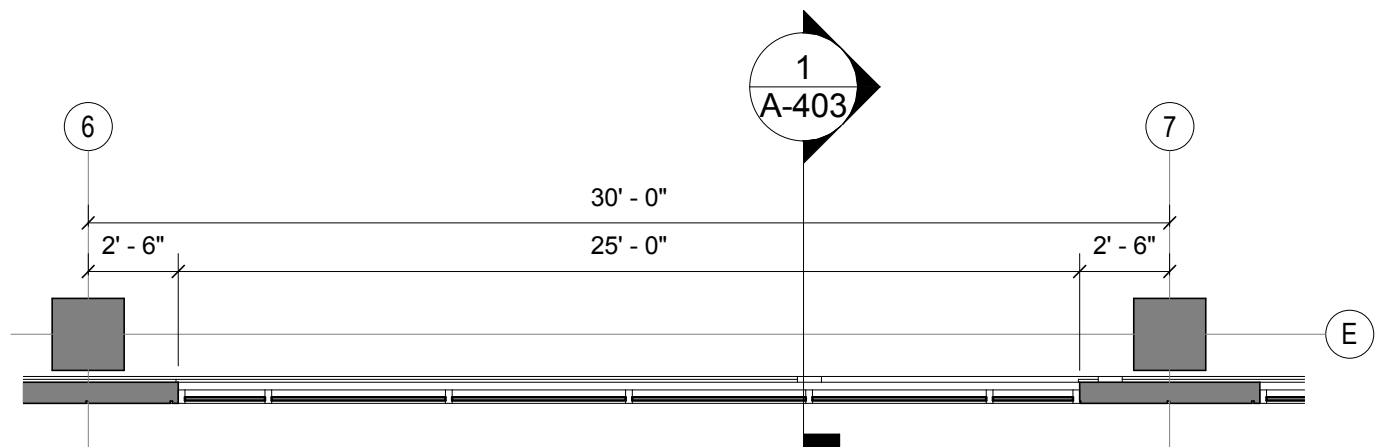


RENDERINGS- PRECAST CLADDING WITH RIBBON WINDOWS
SCALE: 12" = 1'-0"



SECTION- PRECAST CLADDING WITH RIBBON WINDOWS

SCALE: 3/16" = 1'-0"



PLAN- PRECAST CLADDING WITH RIBBON WINDOWS

SCALE: 3/16" = 1'-0"

**SITE
75A**

Washington, DC

**THE GEORGE
WASHINGTON
UNIVERSITY**
WASHINGTON, DC

Gensler

2020 K Street, Northwest
Suite 200
Washington DC 20006
Telephone 202.721.5200
Facsimile 202.872.8587

Seal/Signature

Date

12/31/2012

Project Name

SITE 75A

ZC Case #

06-11G/06-12G

Project Number

09.7075.000

Description

DETAILS-
SOUTH
FACADE

Scale

As indicated

A-403

© 2011 Gensler

**SITE
75A**

Washington, DC

**THE GEORGE
WASHINGTON
UNIVERSITY**

WASHINGTON, DC

Gensler

2020 K Street, Northwest
Suite 200
Washington DC 20006
Telephone 202.721.5200
Facsimile 202.872.8587

Seal/Signature

Date

12/31/2012

Project Name

SITE 75A

ZC Case #

06-11G/06-12G

Project Number

09.7075.000

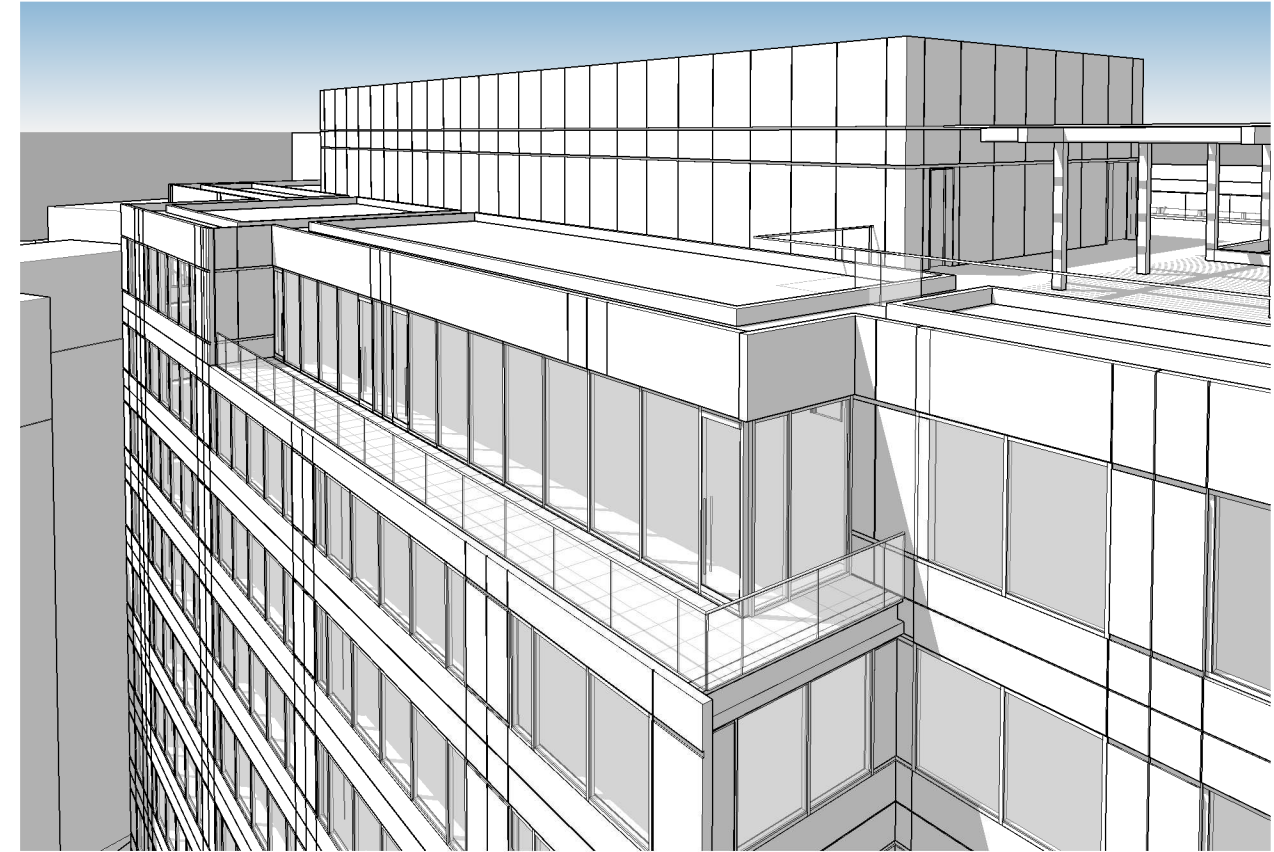
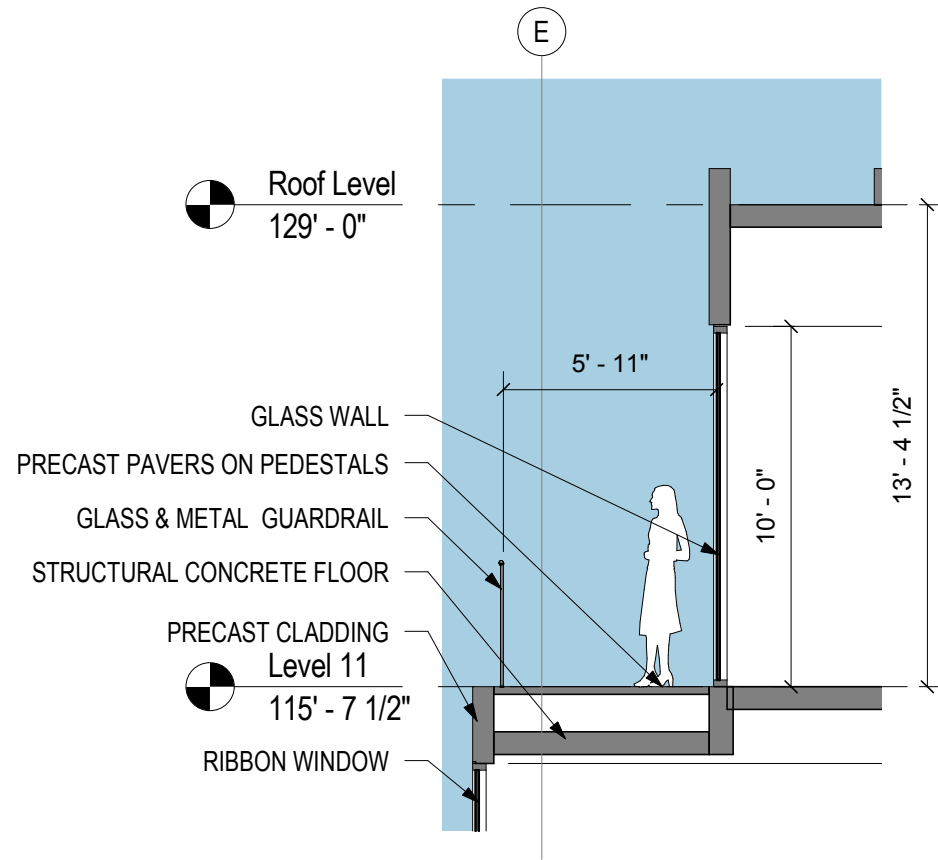
Description

DETAILS-
11TH FLOOR
TERRACE

Scale

As indicated

A-404
© 2011 Gensler



SECTION- 11TH FLOOR TERRACE

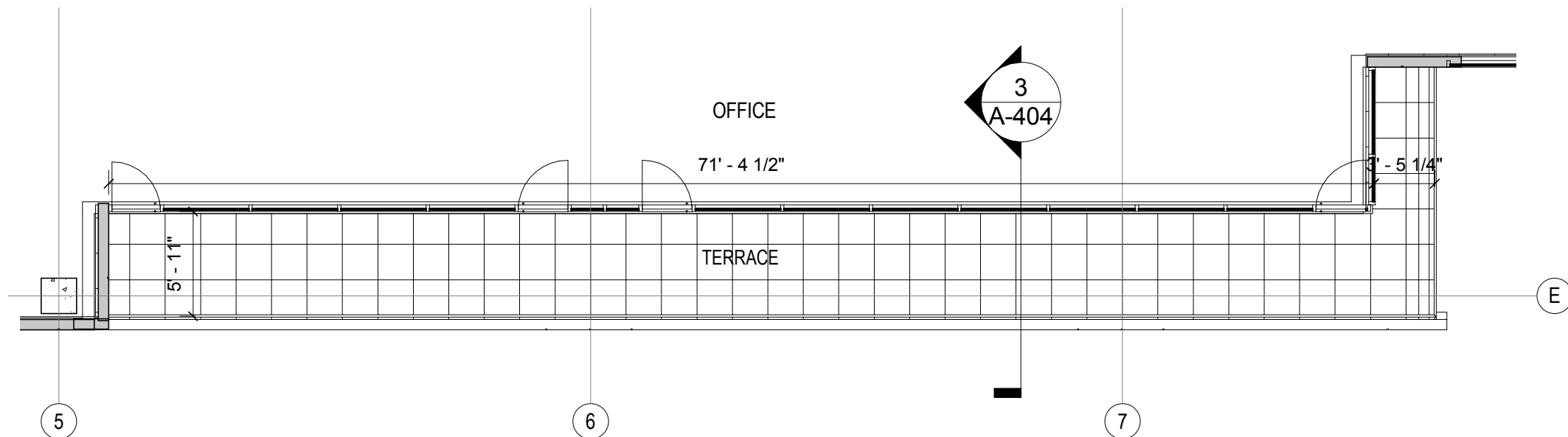
SCALE: 3/16" = 1'-0"

3

AERIAL PERSPECTIVE- SE CORNER OF 11TH FLOOR TERRACE

SCALE:

1



NOTE: QUANTITY, LOCATION, SWING, AND TYPE OF TERRACE ACCESS DOORS SUBJECT TO CHANGE UPON DEVELOPMENT AND TENANT BUILD-OUT

ENLARGED PLAN - 11TH FLOOR TERRACE

SCALE: 1/8" = 1'-0"

2