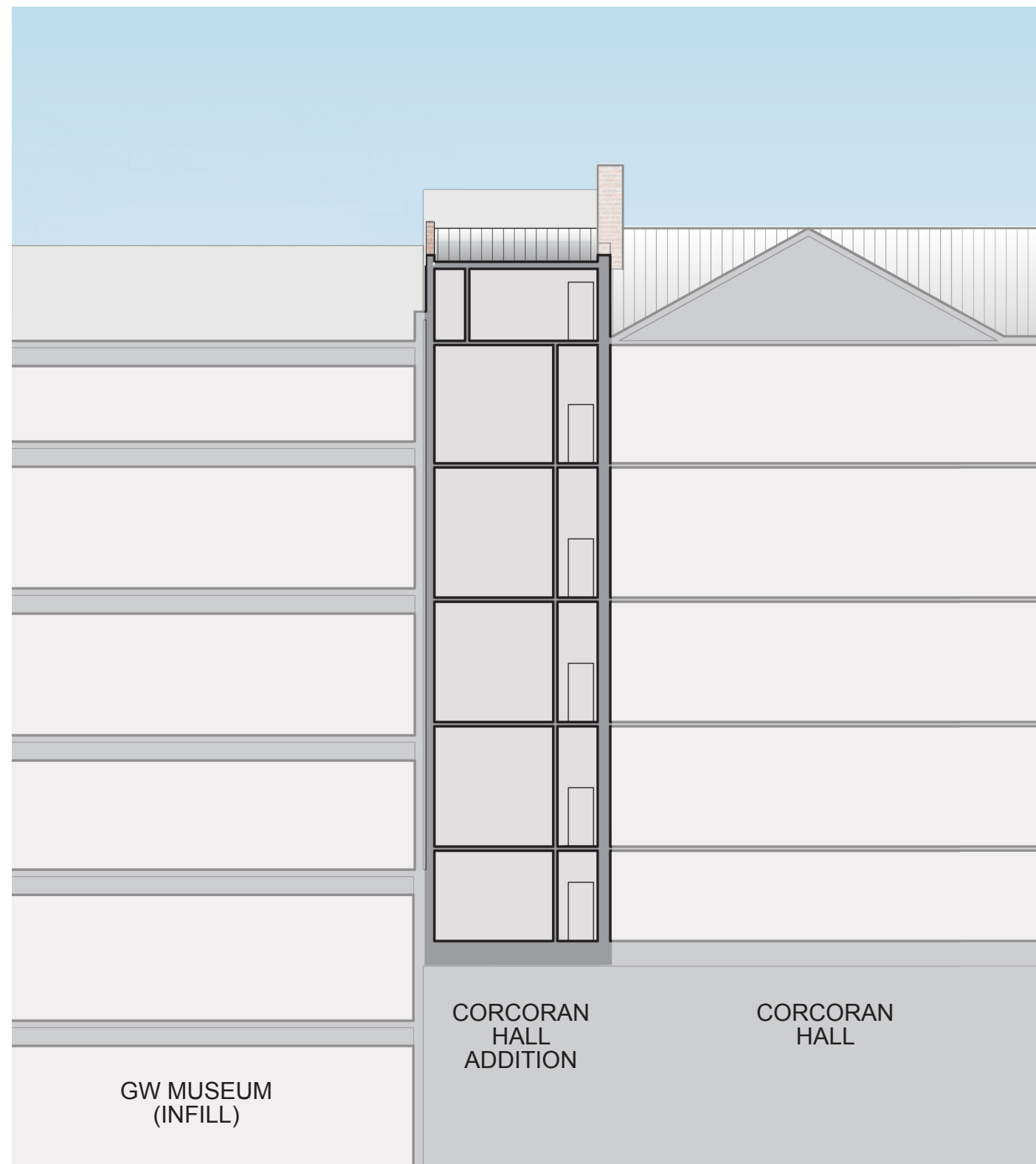


THE GEORGE  
WASHINGTON  
UNIVERSITY  
WASHINGTON DC

The  
George  
Washington  
University  
Museum

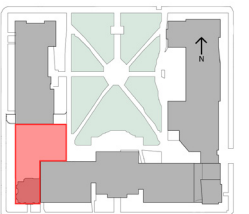
HARTMAN-COX  
ARCHITECTS



0' 16' 32'

NOTE: INTERIOR LAYOUTS ARE ILLUSTRATIVE ONLY  
AND SUBJECT TO CHANGE ON FINAL PLAN

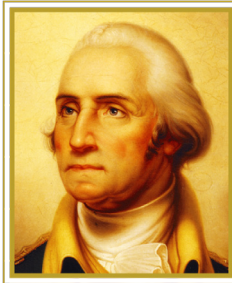
KEY PLAN



DATE  
03/14/2012

TITLE  
Corcoran Hall  
Addition Section

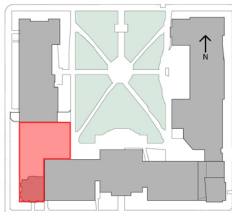
NUMBER  
A-14



THE GEORGE  
WASHINGTON  
UNIVERSITY  
WASHINGTON DC

The  
George  
Washington  
University  
Museum  
HARTMAN-COX  
ARCHITECTS

KEY PLAN



DATE

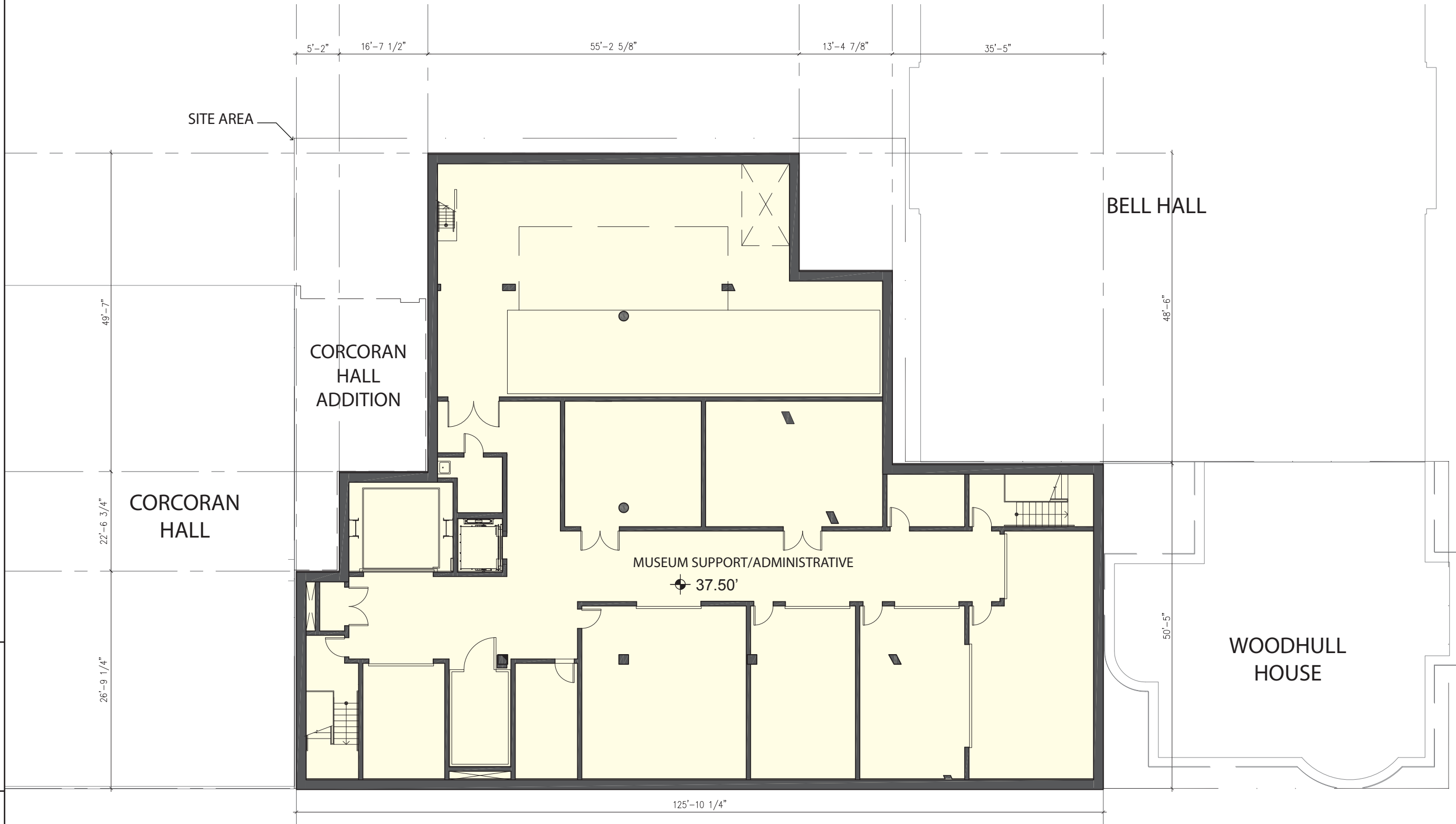
03/14/2012

TITLE

Level B2 Plan

NUMBER

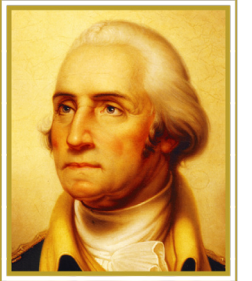
A-15



LEVEL B2 PLAN



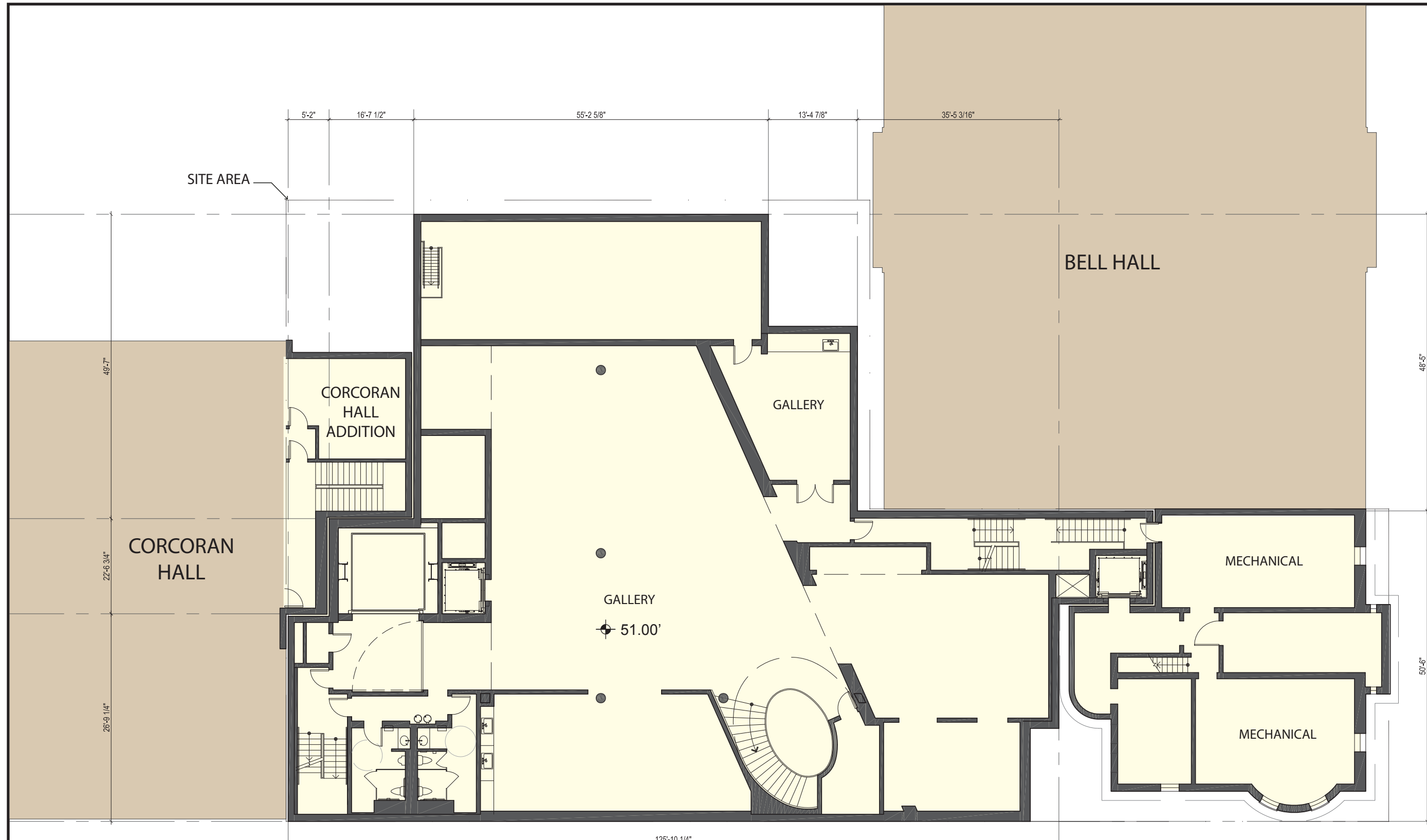
NOTE: INTERIOR LAYOUTS ARE ILLUSTRATIVE ONLY  
AND SUBJECT TO CHANGE ON FINAL PLAN



THE GEORGE  
WASHINGTON  
UNIVERSITY  
WASHINGTON D.C.

The  
George  
Washington  
University  
Museum

HARTMAN-COX  
ARCHITECTS

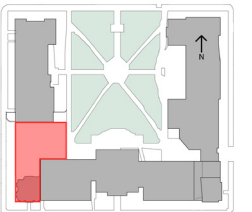


LEVEL B1 PLAN



NOTE: INTERIOR LAYOUTS ARE ILLUSTRATIVE ONLY  
AND SUBJECT TO CHANGE ON FINAL PLAN

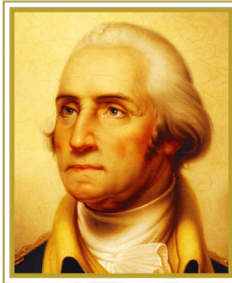
KEY PLAN



DATE  
03/14/2012

TITLE  
Level B1 Plan

NUMBER  
A-16

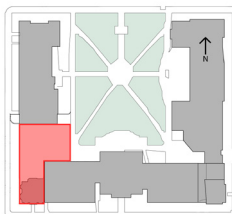


THE GEORGE  
WASHINGTON  
UNIVERSITY  
WASHINGTON DC

The  
George  
Washington  
University  
Museum

HARTMAN-COX  
ARCHITECTS

KEY PLAN



DATE

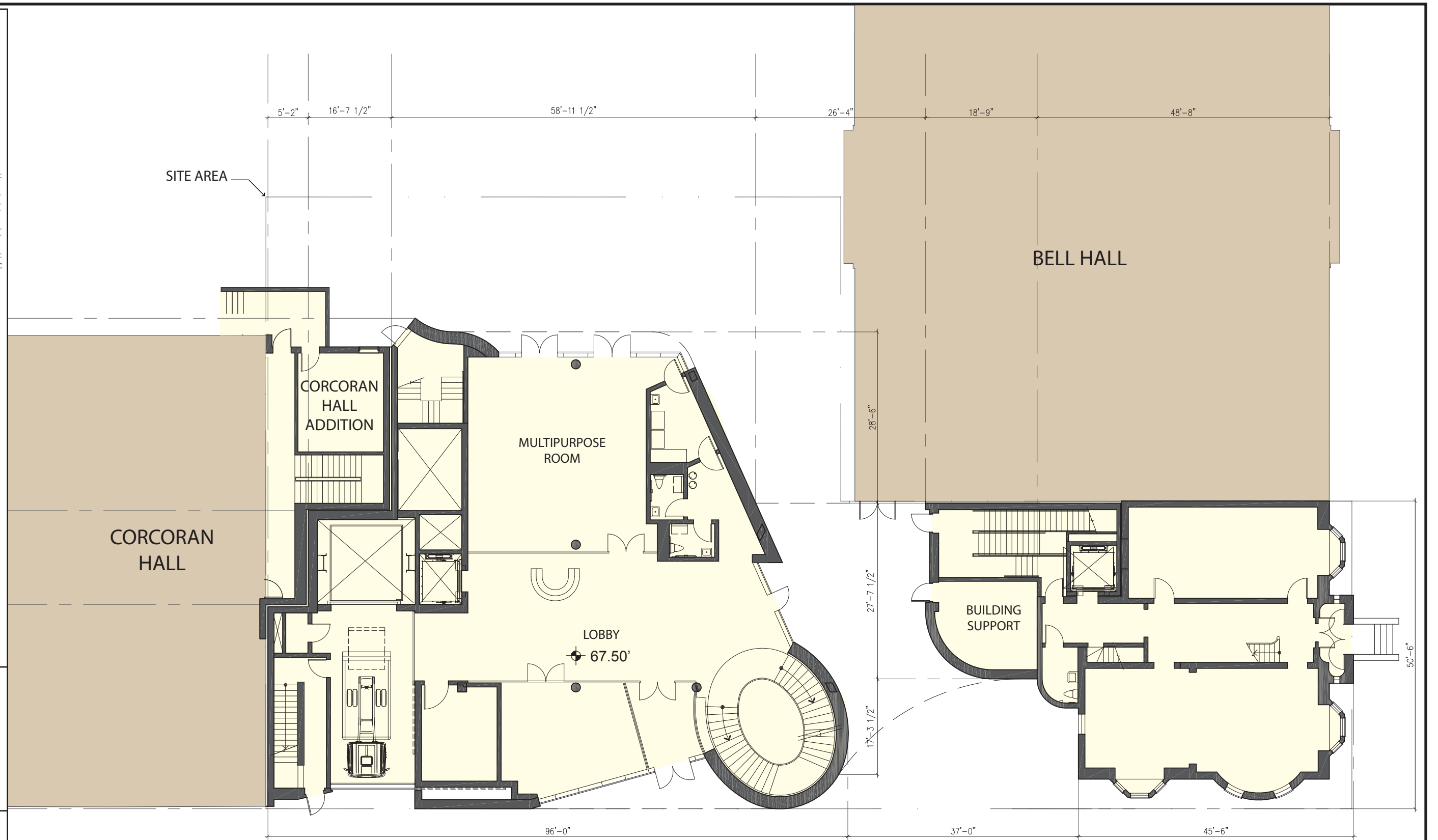
03/14/2012

TITLE

Ground Floor Plan

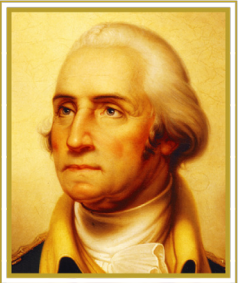
NUMBER

A-17



GROUND FLOOR PLAN

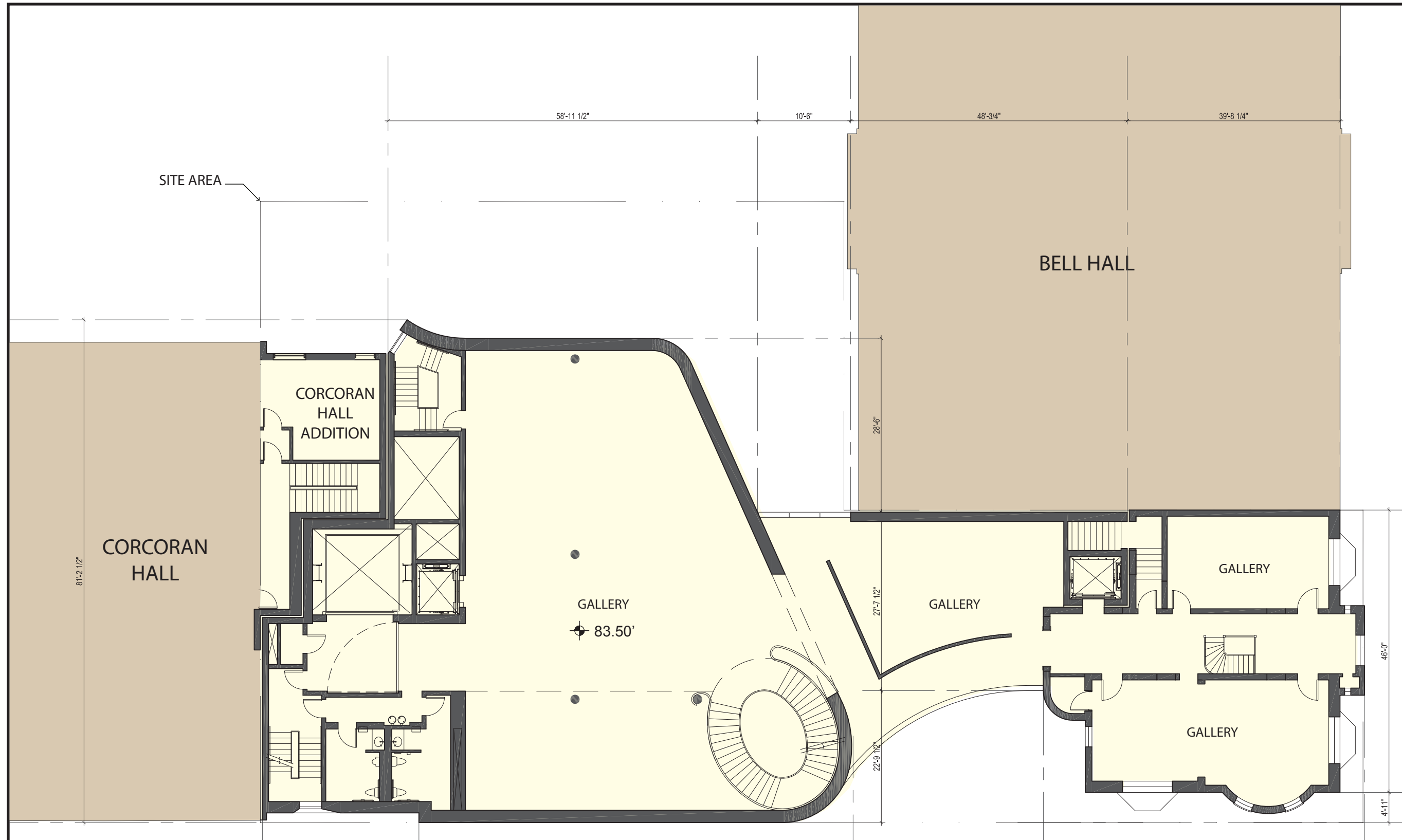
NOTE: INTERIOR LAYOUTS ARE ILLUSTRATIVE ONLY  
AND SUBJECT TO CHANGE ON FINAL PLAN



THE GEORGE  
WASHINGTON  
UNIVERSITY  
WASHINGTON DC

The  
George  
Washington  
University  
Museum

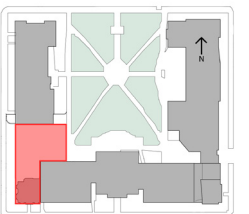
HARTMAN-COX  
ARCHITECTS



SECOND FLOOR PLAN

NOTE: INTERIOR LAYOUTS ARE ILLUSTRATIVE ONLY  
AND SUBJECT TO CHANGE ON FINAL PLAN

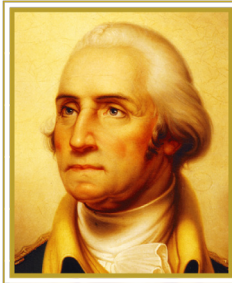
KEY PLAN



DATE  
03/14/2012

TITLE  
Second Floor  
Plan

NUMBER  
A-18

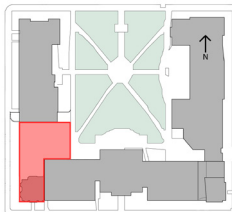


THE GEORGE  
WASHINGTON  
UNIVERSITY  
WASHINGTON DC

The  
George  
Washington  
University  
Museum

HARTMAN-COX  
ARCHITECTS

KEY PLAN



DATE

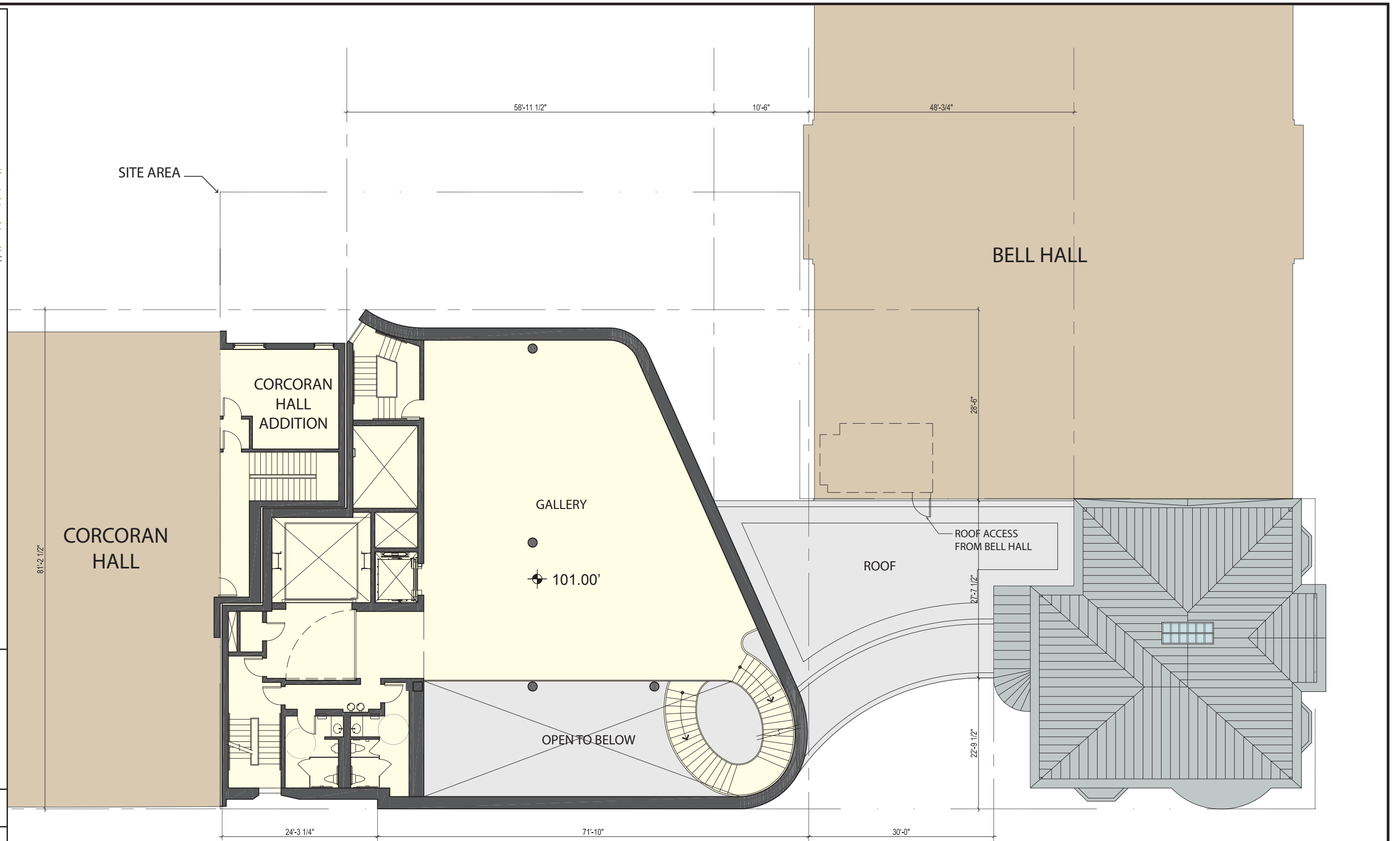
03/14/2012

TITLE

Third Floor  
Plan

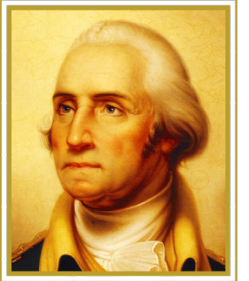
NUMBER

A-19



THIRD FLOOR PLAN

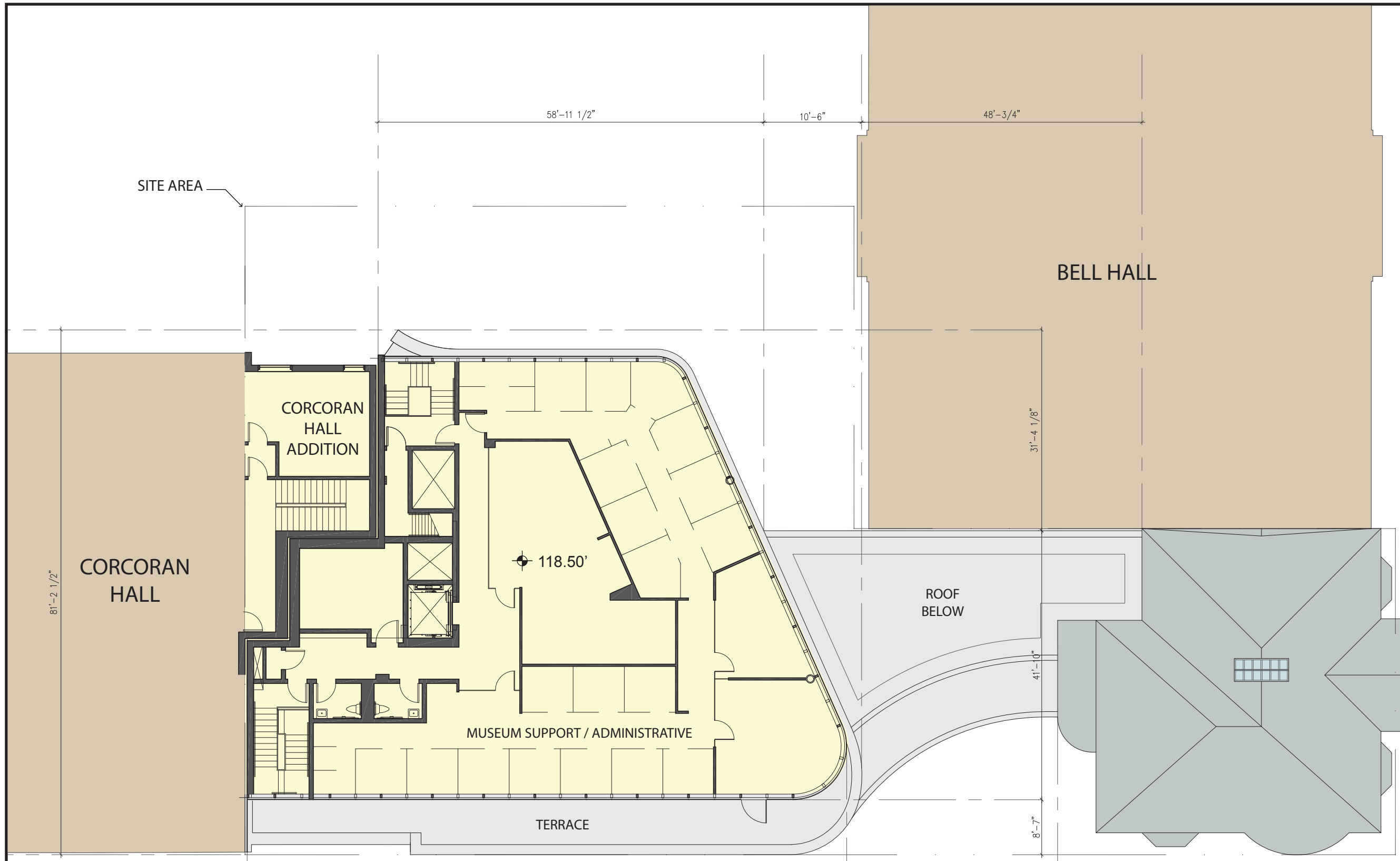
NOTE: INTERIOR LAYOUTS ARE ILLUSTRATIVE ONLY  
AND SUBJECT TO CHANGE ON FINAL PLAN



THE GEORGE  
WASHINGTON  
UNIVERSITY  
WASHINGTON DC

The  
George  
Washington  
University  
Museum

HARTMAN-COX  
ARCHITECTS

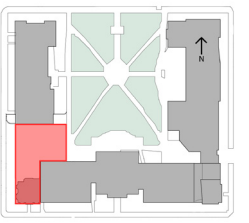


FOURTH FLOOR PLAN



NOTE: INTERIOR LAYOUTS ARE ILLUSTRATIVE ONLY  
AND SUBJECT TO CHANGE ON FINAL PLAN

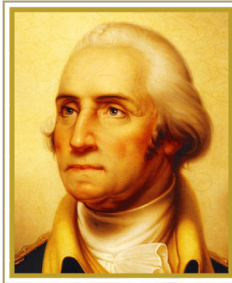
KEY PLAN



DATE  
03/14/2012

TITLE  
Fourth Floor  
Plan

NUMBER  
A-20

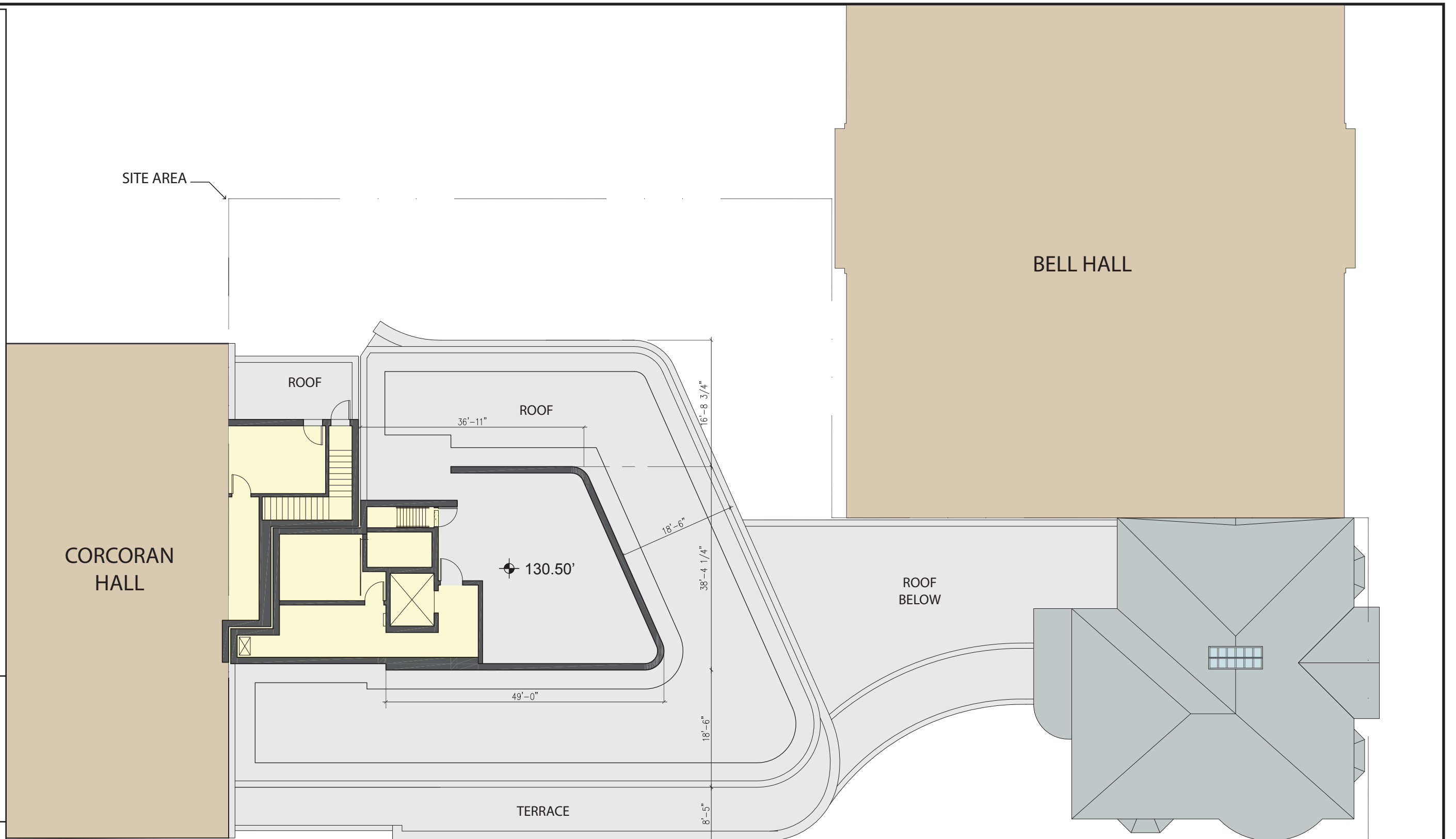


THE GEORGE  
WASHINGTON  
UNIVERSITY  
WASHINGTON DC

The  
George  
Washington  
University  
Museum

HARTMAN-COX  
ARCHITECTS

SITE AREA



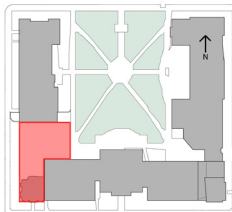
CORCORAN  
HALL

BELL HALL

PENTHOUSE FLOOR PLAN



KEY PLAN



DATE

03/14/2012

TITLE

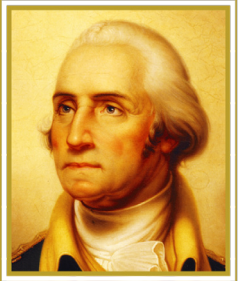
Penthouse Floor  
Plan

NUMBER

A-21

NOTE: INTERIOR LAYOUTS ARE ILLUSTRATIVE ONLY  
AND SUBJECT TO CHANGE ON FINAL PLAN



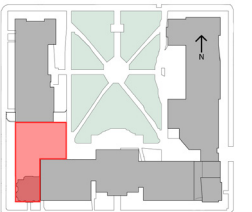


THE GEORGE  
WASHINGTON  
UNIVERSITY  
WASHINGTON DC

The  
George  
Washington  
University  
Museum

HARTMAN-COX  
ARCHITECTS

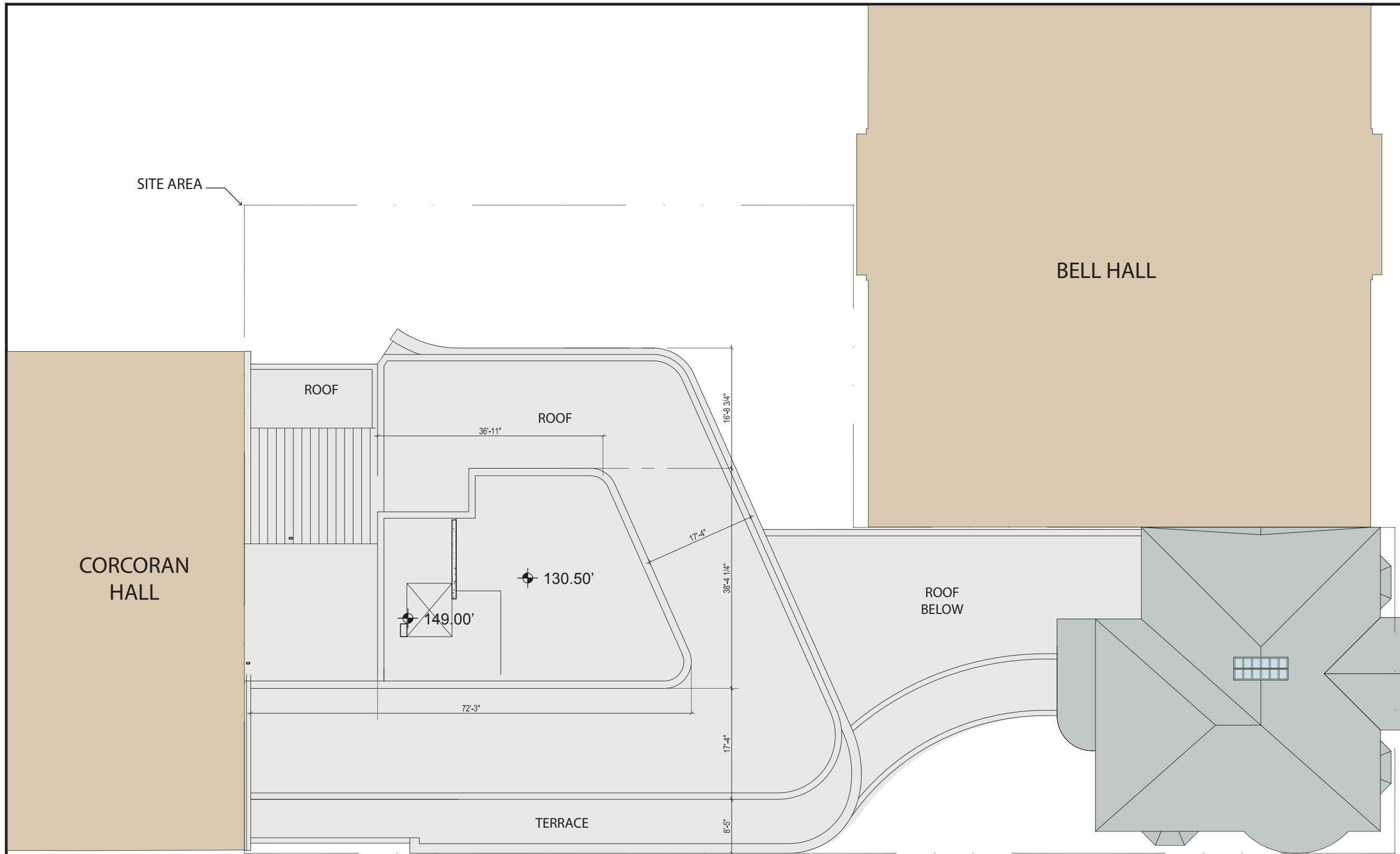
KEY PLAN



DATE  
03/14/2012

TITLE  
Roof  
Plan

NUMBER  
A-22



SITE AREA

BELL HALL

CORCORAN  
HALL

ROOF

ROOF

ROOF  
BELOW

130.50'

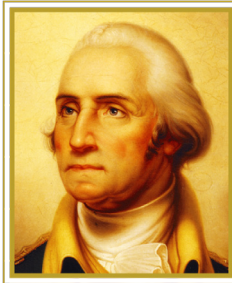
149.00'

TERRACE

ROOF PLAN



NOTE: INTERIOR LAYOUTS ARE ILLUSTRATIVE ONLY  
AND SUBJECT TO CHANGE ON FINAL PLAN

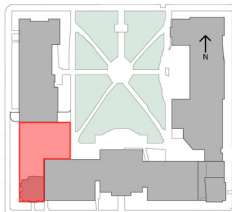


THE GEORGE  
WASHINGTON  
UNIVERSITY  
WASHINGTON DC

The  
George  
Washington  
University  
Museum

HARTMAN-COX  
ARCHITECTS

KEY PLAN



DATE

03/14/2012

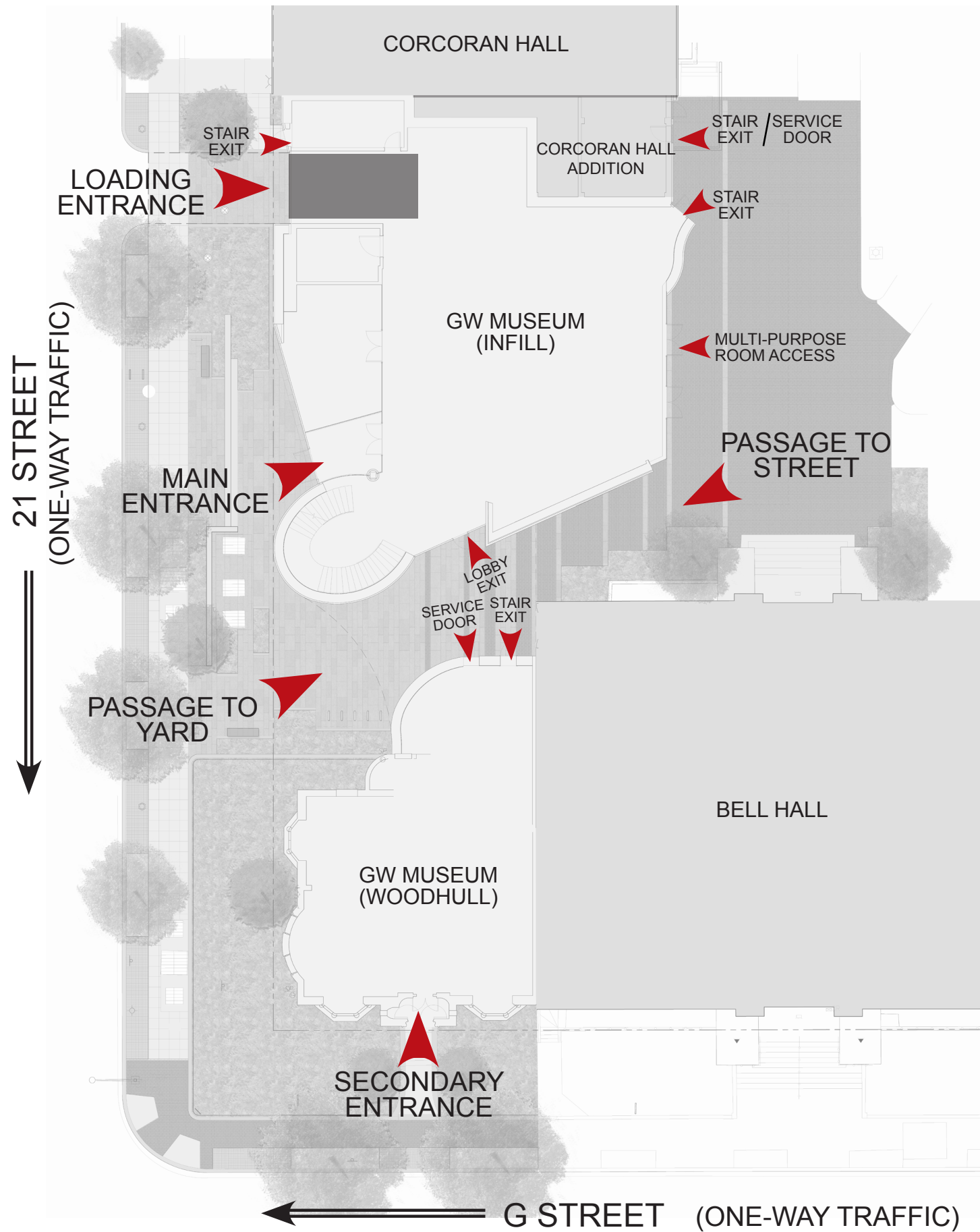
TITLE

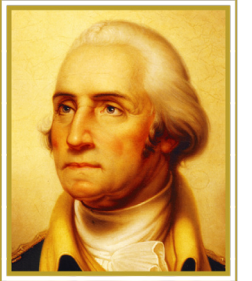
Circulation and  
Loading Plan

NUMBER

A-23

KEY	
	24' Interior Loading Berth





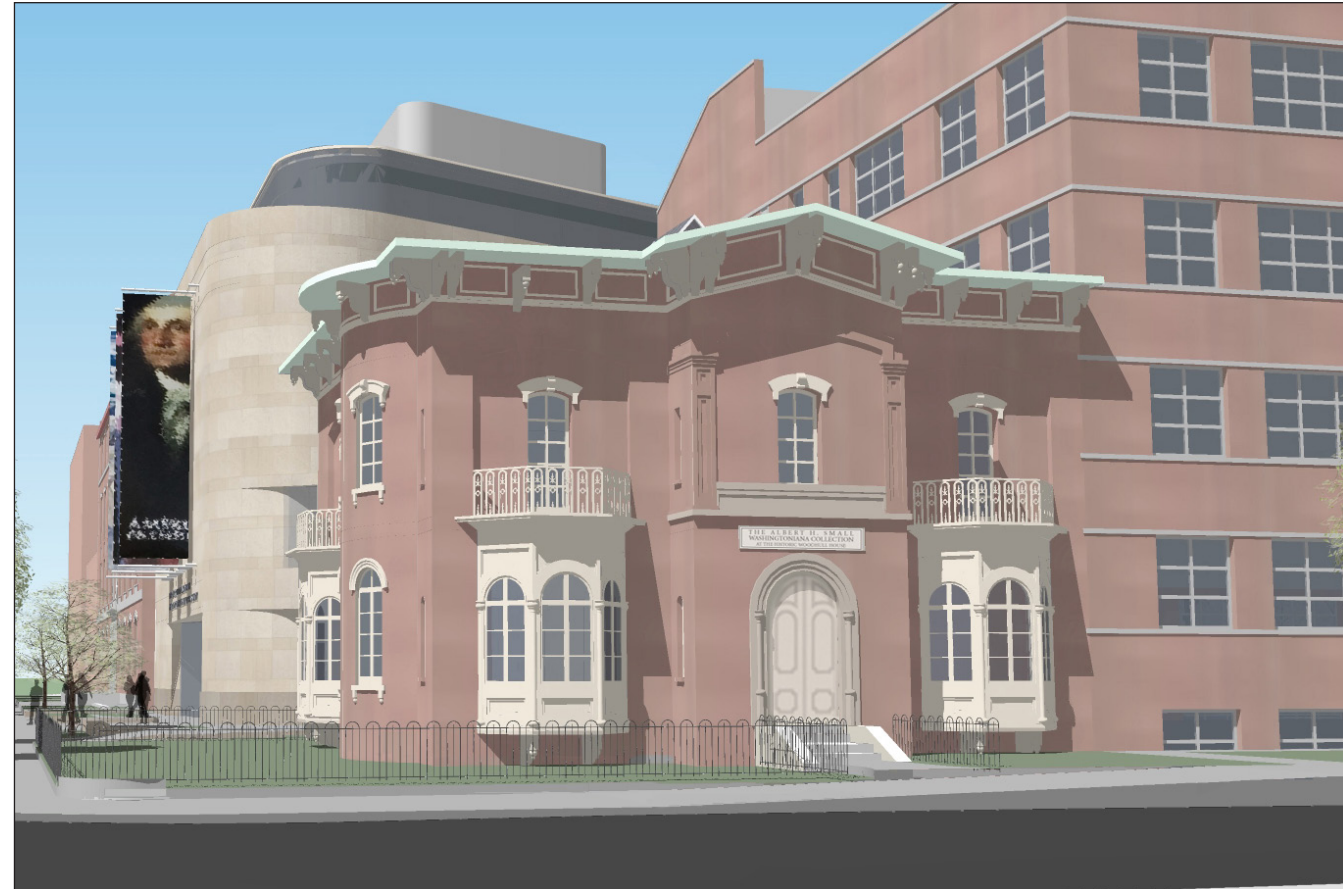
THE GEORGE  
WASHINGTON  
UNIVERSITY  
WASHINGTON D.C.

The  
George  
Washington  
University  
Museum

HARTMAN-COX  
ARCHITECTS

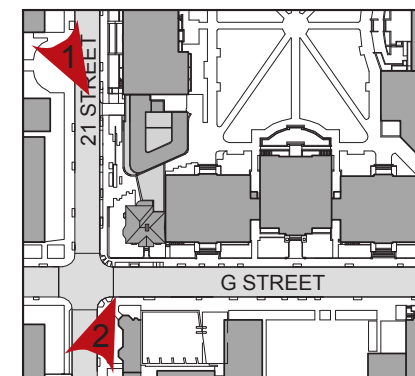
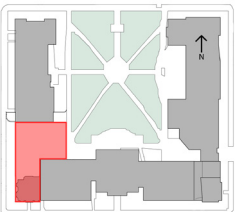


1. PERSPECTIVE VIEW, LOOKING SOUTHEAST ON 21 STREET



2. PERSPECTIVE VIEW, LOOKING NORTHEAST ON G STREET

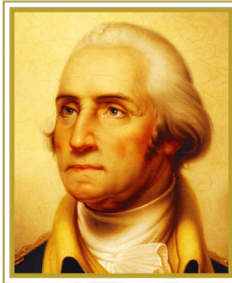
KEY PLAN



DATE  
03/14/2012

TITLE  
21 St & G ST  
Perspective Views

NUMBER  
A-24

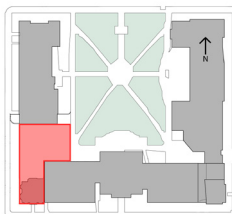


THE GEORGE  
WASHINGTON  
UNIVERSITY  
WASHINGTON D.C.

The  
George  
Washington  
University  
Museum

HARTMAN-COX  
ARCHITECTS

KEY PLAN



DATE

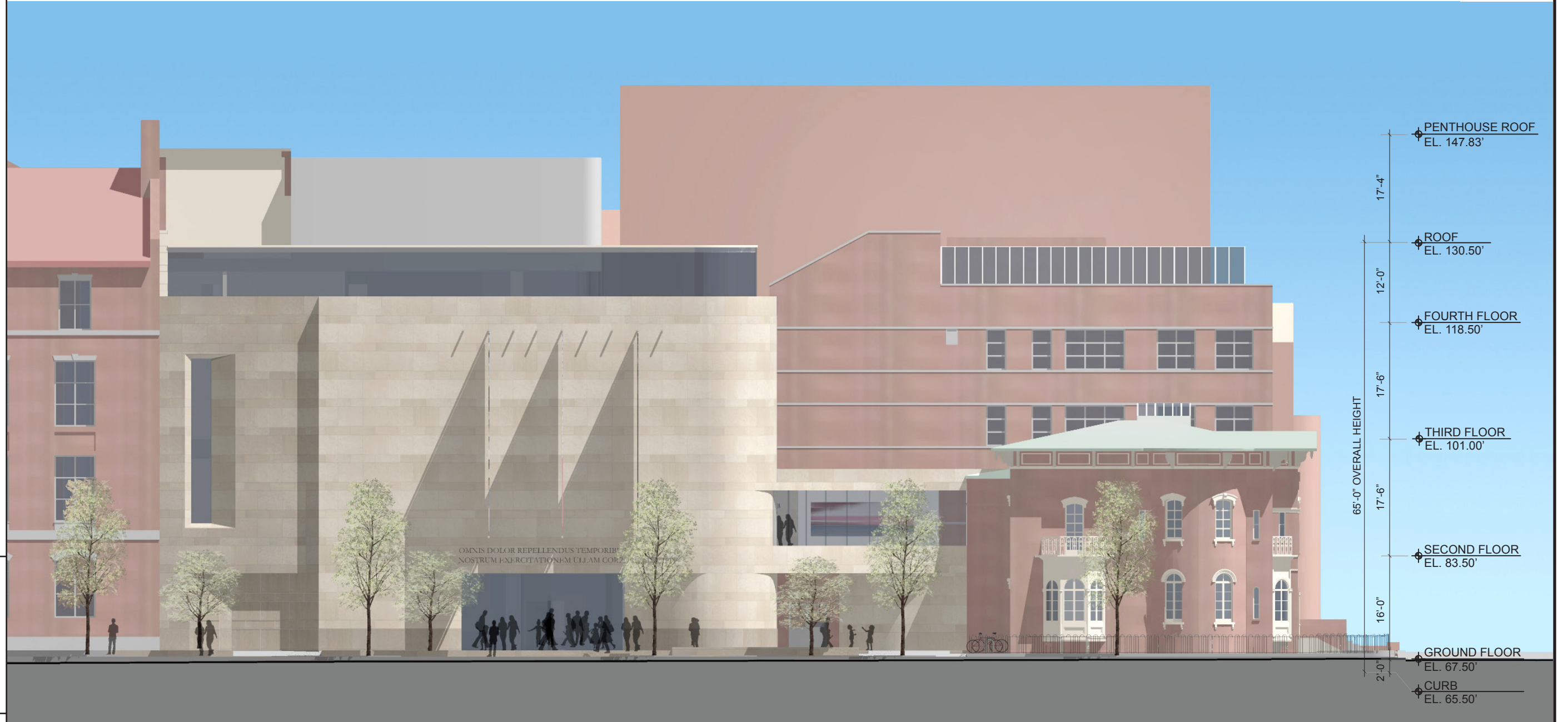
03/14/2012

TITLE

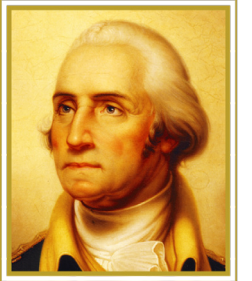
21 ST Elevation

NUMBER

A-25



NOTE: SIGNAGE IS SHOWN FOR ILLUSTRATIVE PURPOSES ONLY.  
TEXT AND DESIGN ARE SUBJECT TO CHANGE ON FINAL PLAN.



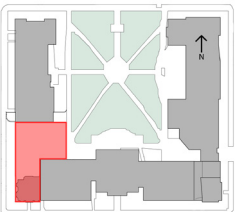
THE GEORGE  
WASHINGTON  
UNIVERSITY  
WASHINGTON D.C.

The  
George  
Washington  
University  
Museum

HARTMAN-COX  
ARCHITECTS



KEY PLAN

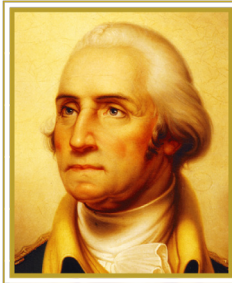


DATE  
03/14/2012

TITLE  
G ST Elevation

NUMBER  
A-26

NOTE: SIGNAGE IS SHOWN FOR ILLUSTRATIVE PURPOSES ONLY.  
TEXT AND DESIGN ARE SUBJECT TO CHANGE ON FINAL PLAN.

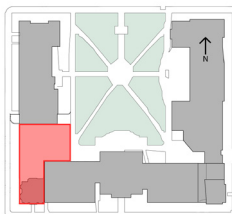


THE GEORGE  
WASHINGTON  
UNIVERSITY  
WASHINGTON D.C.

The  
George  
Washington  
University  
Museum

HARTMAN-COX  
ARCHITECTS

KEY PLAN



DATE

03/14/2012

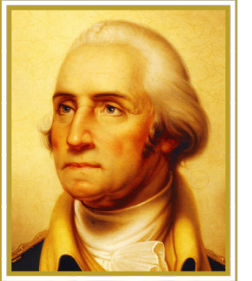
TITLE

University Yard  
Elevation

NUMBER

A-27



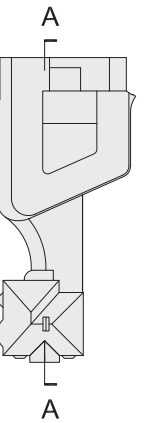


THE GEORGE  
WASHINGTON  
UNIVERSITY  
WASHINGTON, D.C.

The  
George  
Washington  
University  
Museum

HARTMAN-COX  
ARCHITECTS

KEY PLAN



DATE  
03/14/2012

TITLE  
North-South  
Section

NUMBER  
A-28

EL. 147.83'  
PENTHOUSE ROOF

17'-4"

EL. 130.50'  
ROOF

12'-0"

EL. 118.50'  
FOURTH FLOOR

17'-6"

EL. 101.00'  
THIRD FLOOR

17'-6"

EL. 83.50'  
SECOND FLOOR

16'-0"

EL. 67.50'  
GROUND FLOOR

16'-6"

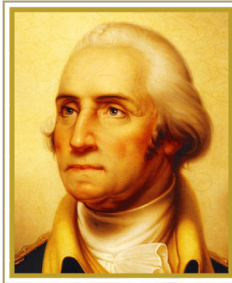
EL. 51.00'  
BASEMENT FLOOR

13'-6"

EL. 37.50'  
SUB-BASEMENT FLOOR

0' 16' 32'

NOTE: INTERIOR LAYOUTS ARE ILLUSTRATIVE ONLY  
AND SUBJECT TO CHANGE ON FINAL PLAN

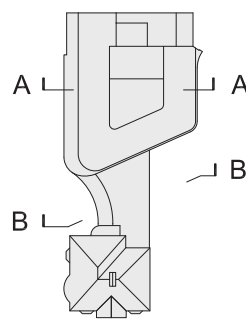


THE GEORGE  
WASHINGTON  
UNIVERSITY  
WASHINGTON DC

The  
George  
Washington  
University  
Museum

HARTMAN-COX  
ARCHITECTS

KEY PLAN



DATE

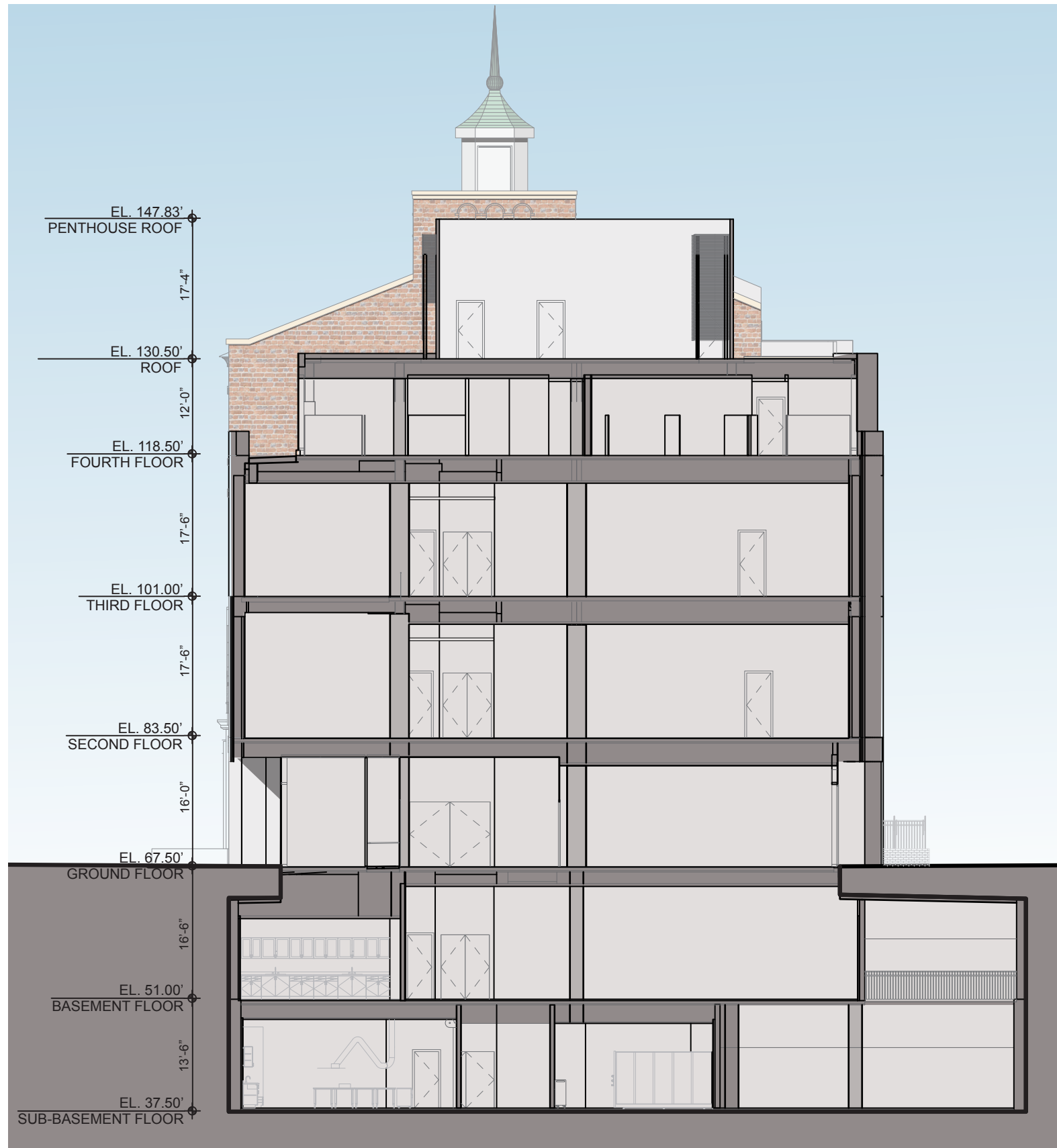
03/14/2012

TITLE

East-West  
Sections

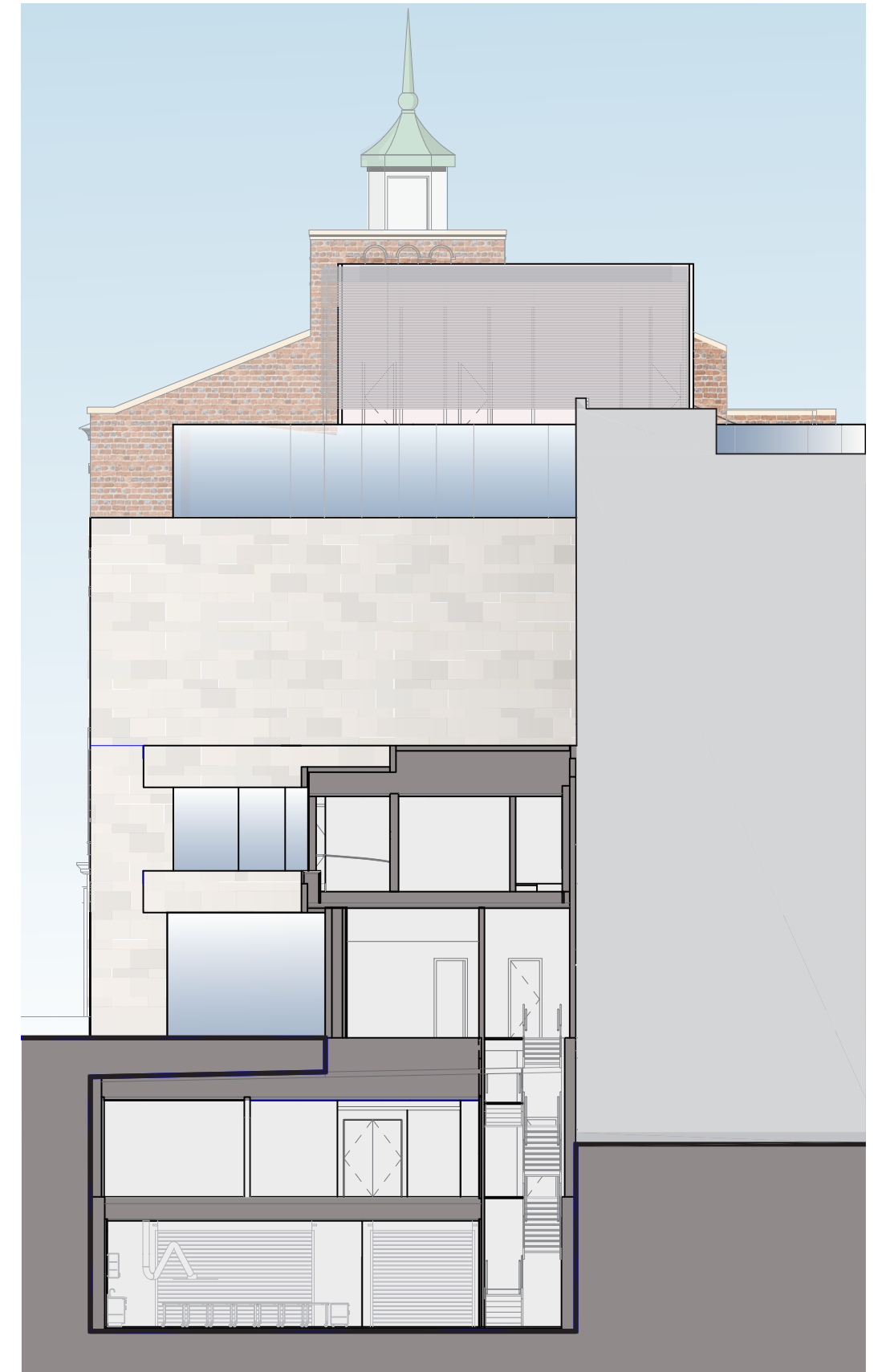
NUMBER

A-29



EAST-WEST SECTION A-A

NOTE: INTERIOR LAYOUTS ARE ILLUSTRATIVE ONLY  
AND SUBJECT TO CHANGE ON FINAL PLAN



EAST-WEST SECTION B-B





**SDK LEED 2009 for New Construction and Major Renovation**  
Project Checklist



GW Museum  
Schematic Design

19 4 3 Sustainable Sites			Possible Points: 26
Y	N	?	
Y			Prereq 1 Construction Activity Pollution Prevention
1			Credit 1 Site Selection 1
5			Credit 2 Development Density and Community Connectivity 5
		1	Credit 3 Brownfield Redevelopment 1
6			Credit 4.1 Alternative Transportation—Public Transportation Access 6
1			Credit 4.2 Alternative Transportation—Bicycle Storage and Changing Rooms 1
		3	Credit 4.3 Alternative Transportation—Low-Emitting and Fuel-Efficient Vehicles 3
2			Credit 4.4 Alternative Transportation—Parking Capacity 2
		1	Credit 5.1 Site Development—Protect or Restore Habitat 1
1			Credit 5.2 Site Development—Maximize Open Space 1
		1	Credit 6.1 Stormwater Design—Quantity Control 1
		1	Credit 6.2 Stormwater Design—Quality Control 1
1			Credit 7.1 Heat Island Effect—Non-roof 1
1			Credit 7.2 Heat Island Effect—Roof 1
1			Credit 8 Light Pollution Reduction 1

8 2 Water Efficiency			Possible Points: 10
Y	N	?	
Y			Prereq 1 Water Use Reduction—20% Reduction
4			Credit 1 Water Efficient Landscaping 2 to 4
		2	Credit 2 Innovative Wastewater Technologies 2
4			Credit 3 Water Use Reduction 2 to 4

14 21 Energy and Atmosphere			Possible Points: 35
Y	N	?	
Y			Prereq 1 Fundamental Commissioning of Building Energy Systems
Y			Prereq 2 Minimum Energy Performance
Y			Prereq 3 Fundamental Refrigerant Management
5	14		Credit 1 Optimize Energy Performance 1 to 19
	7		Credit 2 On-Site Renewable Energy 1 to 7
2			Credit 3 Enhanced Commissioning 2
2			Credit 4 Enhanced Refrigerant Management 2
3			Credit 5 Measurement and Verification 3
2			Credit 6 Green Power 2

7 7 Materials and Resources			Possible Points: 14
Y	N	?	
Y			Prereq 1 Storage and Collection of Recyclables
		3	Credit 1.1 Building Reuse—Maintain Existing Walls, Floors, and Roof 1 to 3
		1	Credit 1.2 Building Reuse—Maintain 50% of Interior Non-Structural Elements 1
2			Credit 2 Construction Waste Management 1 to 2
		2	Credit 3 Materials Reuse 1 to 2

Materials and Resources, Continued			
Y	N	?	
2			Credit 4 Recycled Content 1 to 2
2			Credit 5 Regional Materials 1 to 2
		1	Credit 6 Rapidly Renewable Materials 1
1			Credit 7 Certified Wood 1

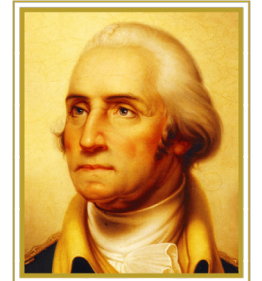
8 3 4 Indoor Environmental Quality			Possible Points: 15
Y	N	?	
Y			Prereq 1 Minimum Indoor Air Quality Performance
Y			Prereq 2 Environmental Tobacco Smoke (ETS) Control
1			Credit 1 Outdoor Air Delivery Monitoring 1
		1	Credit 2 Increased Ventilation 1
1			Credit 3.1 Construction IAQ Management Plan—During Construction 1
1			Credit 3.2 Construction IAQ Management Plan—Before Occupancy 1
1			Credit 4.1 Low-Emitting Materials—Adhesives and Sealants 1
1			Credit 4.2 Low-Emitting Materials—Paints and Coatings 1
1			Credit 4.3 Low-Emitting Materials—Flooring Systems 1
		1	Credit 4.4 Low-Emitting Materials—Composite Wood and Agrifiber Products 1
1			Credit 5 Indoor Chemical and Pollutant Source Control 1
		1	Credit 6.1 Controllability of Systems—Lighting 1
		1	Credit 6.2 Controllability of Systems—Thermal Comfort 1
		1	Credit 7.1 Thermal Comfort—Design 1
1			Credit 7.2 Thermal Comfort—Verification 1
		1	Credit 8.1 Daylight and Views—Daylight 1
1			Credit 8.2 Daylight and Views—Views 1

6 Innovation and Design Process			Possible Points: 6
Y	N	?	
1			Credit 1.1 Innovation in Design: Green Housekeeping 1
1			Credit 1.2 Exemplary Performance: Green Power 1
1			Credit 1.3 Exemplary Performance: SSc2 Double Density 1
1			Credit 1.4 Exemplary Performance: SSc4.1 Public Transportation Access 1
1			Credit 1.5 Innovation in Design: Signage Program 1
1			Credit 2 LEED Accredited Professional 1

4 Regional Priority Credits			Possible Points: 4
Y	N	?	
1			Credit 1.1 Regional Priority: SSc5.1, SSc6.1 1
1			Credit 1.2 Regional Priority: EAc1 (40%), EAc2 1
1			Credit 1.3 Regional Priority: MRC1.1 1
1			Credit 1.4 Regional Priority: WEc2 1

62 41 7 Total			Possible Points: 110
---------------	--	--	----------------------

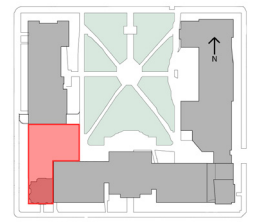
Certified 40 to 49 points Silver 50 to 59 points Gold 60 to 79 points Platinum 80 to 110



THE GEORGE  
WASHINGTON  
UNIVERSITY  
WASHINGTON D.C.

The  
George  
Washington  
University  
Museum  
**HARTMAN-COX  
ARCHITECTS**

KEY PLAN



DATE  
03/14/2012

TITLE  
LEED Checklist

NUMBER  
A-30

Note: The 2007 Foggy Bottom Campus Plan commits GW to achieving the equivalency of 16 points, using USGBC's LEED V2.2 Scorecard as an evaluator of the sustainable quotient of a project. This scorecard reflects GW's anticipated goal of submitting this project to GBCI under LEED-NC 2009 with a target of Silver level certification.