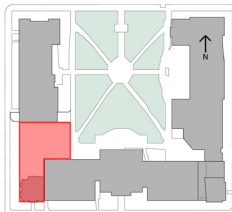


THE GEORGE
WASHINGTON
UNIVERSITY
WASHINGTON DC

The
George
Washington
University
Museum

HARTMAN-COX
ARCHITECTS

KEY PLAN



DATE

03/14/2012

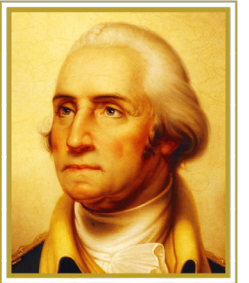
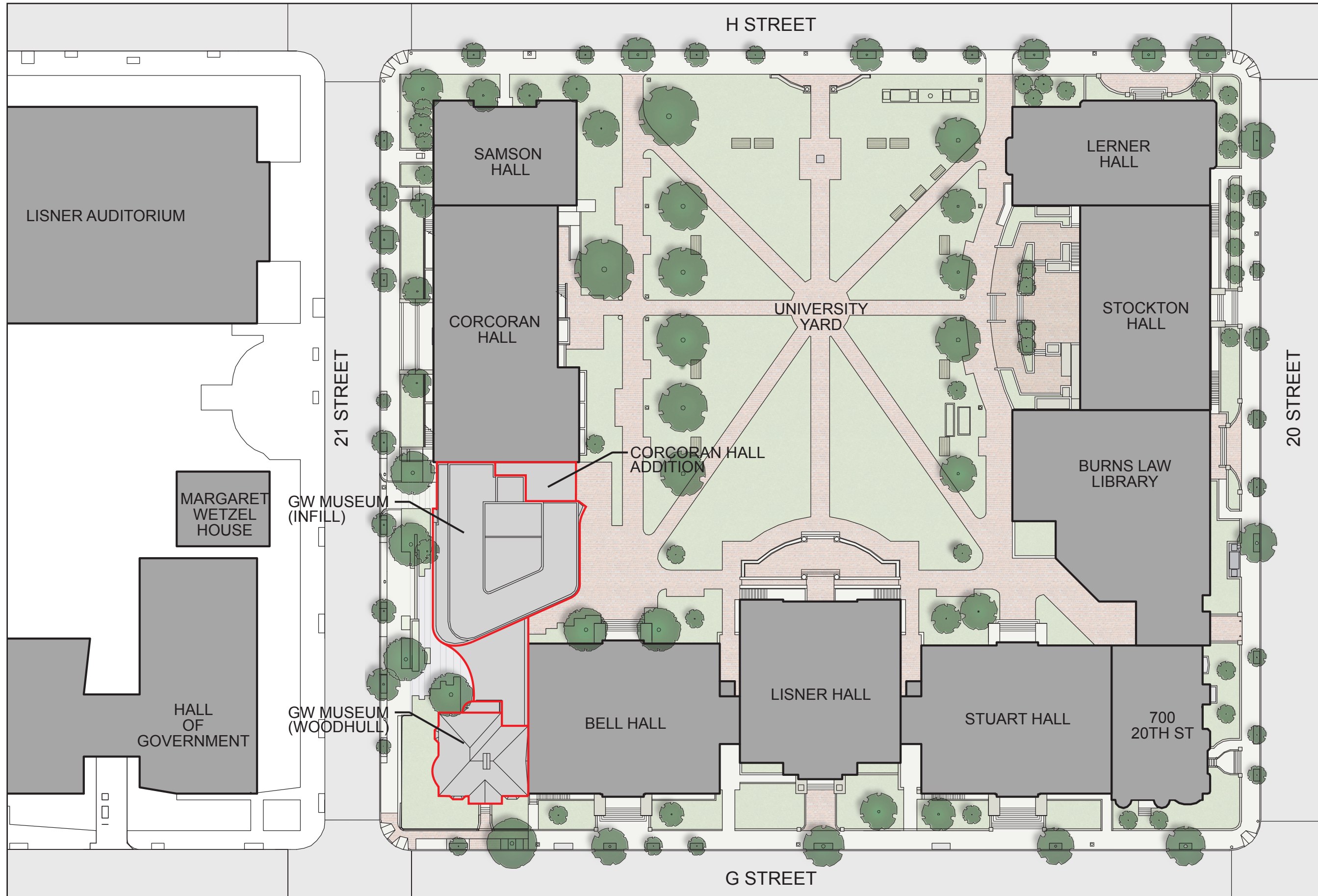
TITLE

Architectural Vicinity
Plan

NUMBER

A-05



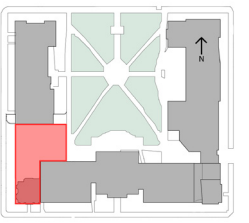


THE GEORGE
WASHINGTON
UNIVERSITY
WASHINGTON D.C.

The
George
Washington
University
Museum

HARTMAN-COX
ARCHITECTS

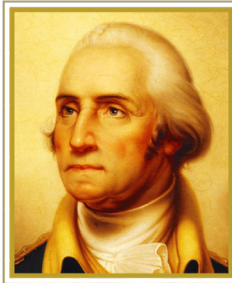
KEY PLAN



DATE
03/14/2012

TITLE
Block Plan

NUMBER
A-06

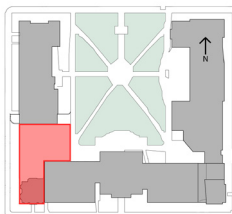


THE GEORGE
WASHINGTON
UNIVERSITY
WASHINGTON DC

The
George
Washington
University
Museum

HARTMAN-COX
ARCHITECTS

KEY PLAN



DATE

03/14/2012

TITLE

Context Photos

NUMBER

A-07



1. LISNER AUDITORIUM



2. HALL OF GOVERNMENT



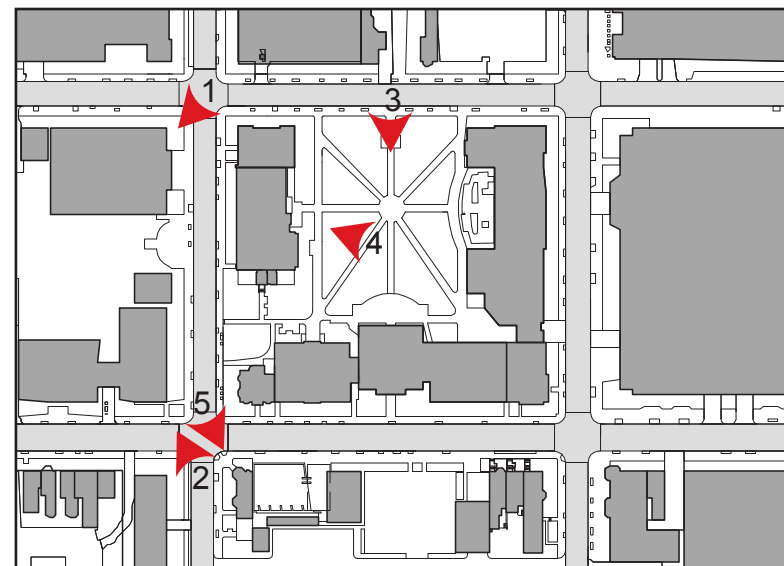
3. LISNER HALL



4. CORCORAN HALL



5. QUIGLEY'S





1. VIEW OF SITE, LOOKING NORTHEAST



2. VIEW OF SITE, LOOKING NORTHEAST



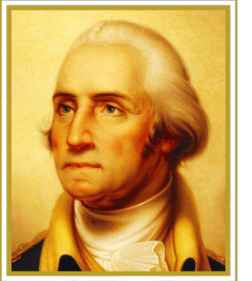
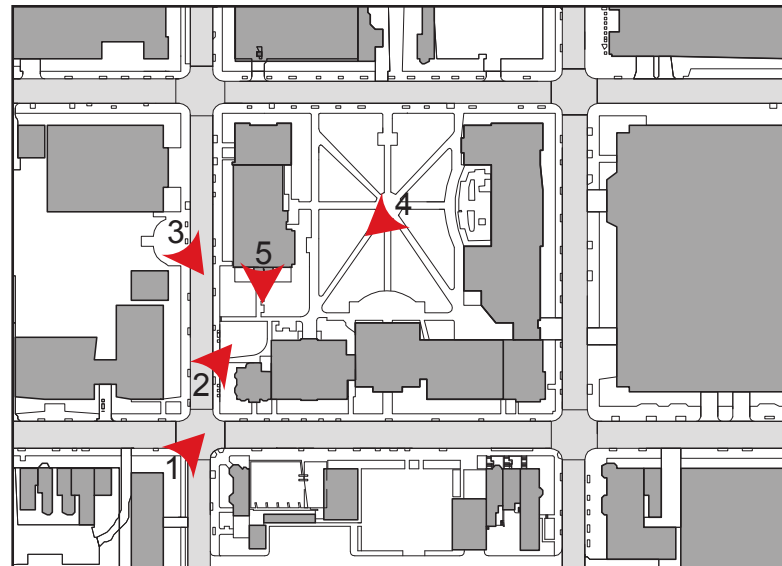
3. VIEW OF SITE, LOOKING SOUTHEAST



4. VIEW OF SITE, LOOKING SOUTHWEST



5. VIEW FROM CORCORAN HALL ROOFTOP, LOOKING SOUTH

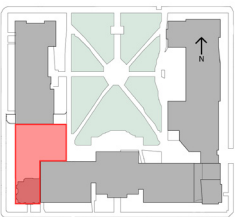


THE GEORGE
WASHINGTON
UNIVERSITY
WASHINGTON D.C.

The
George
Washington
University
Museum

HARTMAN-COX
ARCHITECTS

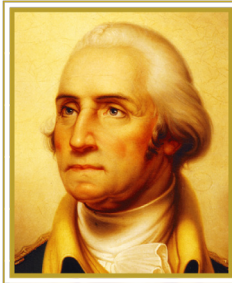
KEY PLAN



DATE
03/14/2012

TITLE
Site Photos

NUMBER
A-08

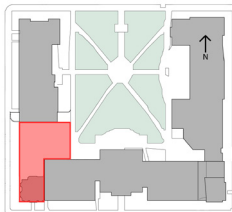


THE GEORGE
WASHINGTON
UNIVERSITY
WASHINGTON DC

The
George
Washington
University
Museum

HARTMAN-COX
ARCHITECTS

KEY PLAN



DATE

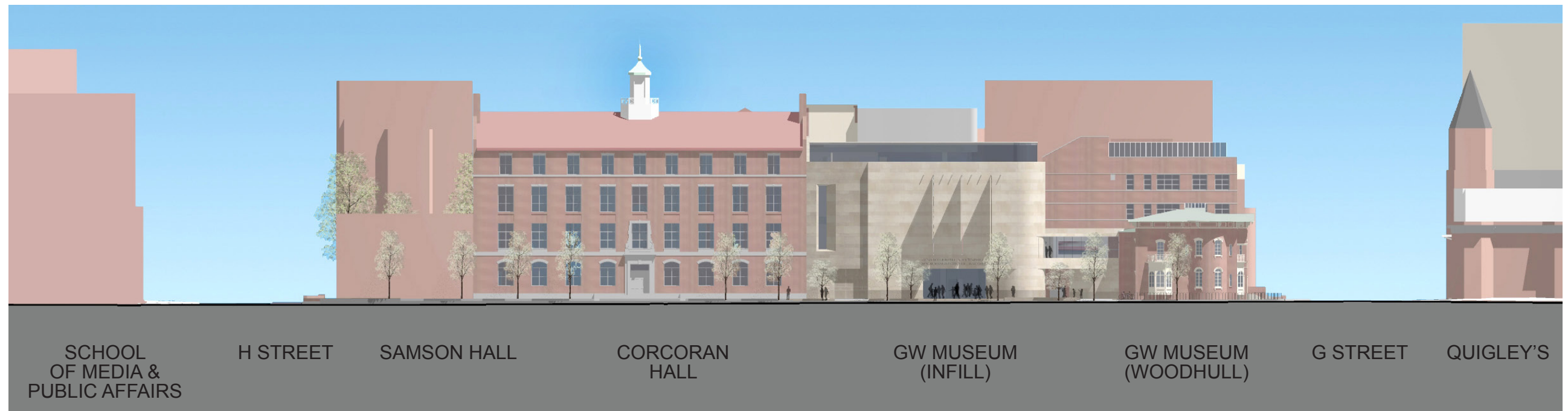
03/14/2012

TITLE

Block Elevations

NUMBER

A-09



SCHOOL
OF MEDIA &
PUBLIC AFFAIRS

H STREET

SAMSON HALL

CORCORAN
HALL

GW MUSEUM
(INFILL)

GW MUSEUM
(WOODHULL)

G STREET

QUIGLEY'S

21ST ELEVATION



MONROE HALL

HALL OF
GOVERNMENT

21 STREET

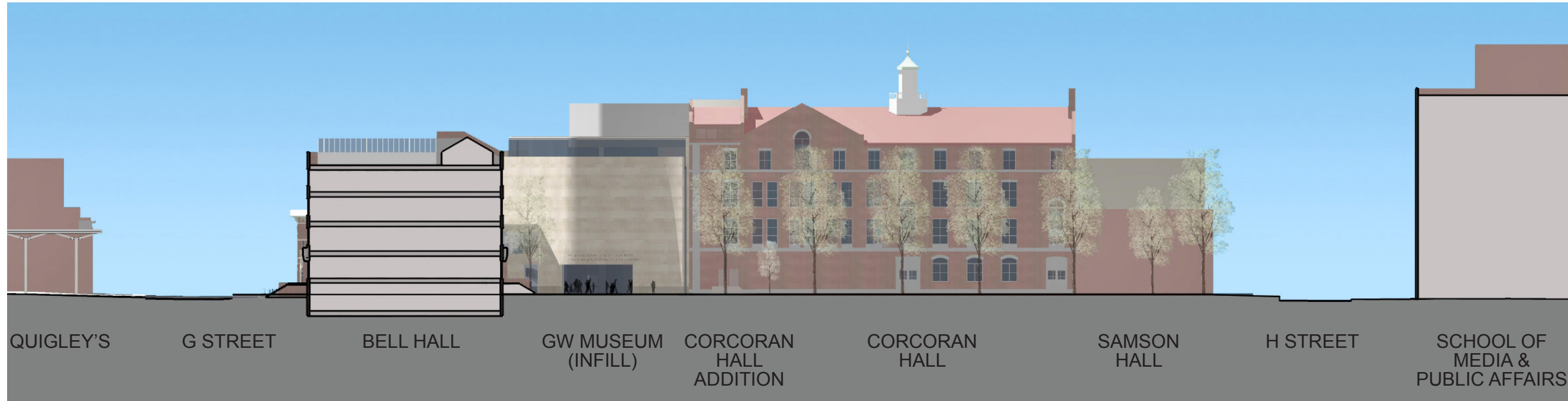
GW MUSEUM
(WOODHULL)

BELL HALL

LISNER HALL

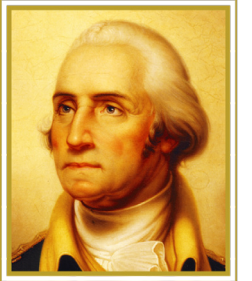
STUART HALL

G ST ELEVATION



QUIGLEY'S G STREET BELL HALL GW MUSEUM (INFILL) CORCORAN HALL ADDITION CORCORAN HALL SAMSON HALL H STREET SCHOOL OF MEDIA & PUBLIC AFFAIRS

UNIVERSITY YARD ELEVATION

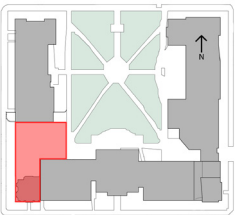


THE GEORGE
 WASHINGTON
 UNIVERSITY
 WASHINGTON D.C.

The
 George
 Washington
 University
 Museum

HARTMAN-COX
 ARCHITECTS

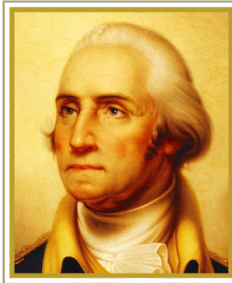
KEY PLAN



DATE
 03/14/2012

TITLE
 Block Elevation

NUMBER
 A-10

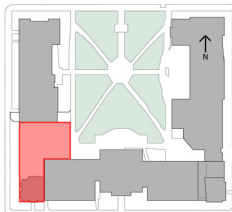


THE GEORGE
WASHINGTON
UNIVERSITY
WASHINGTON DC

The
George
Washington
University
Museum

HARTMAN-COX
ARCHITECTS

KEY PLAN



DATE

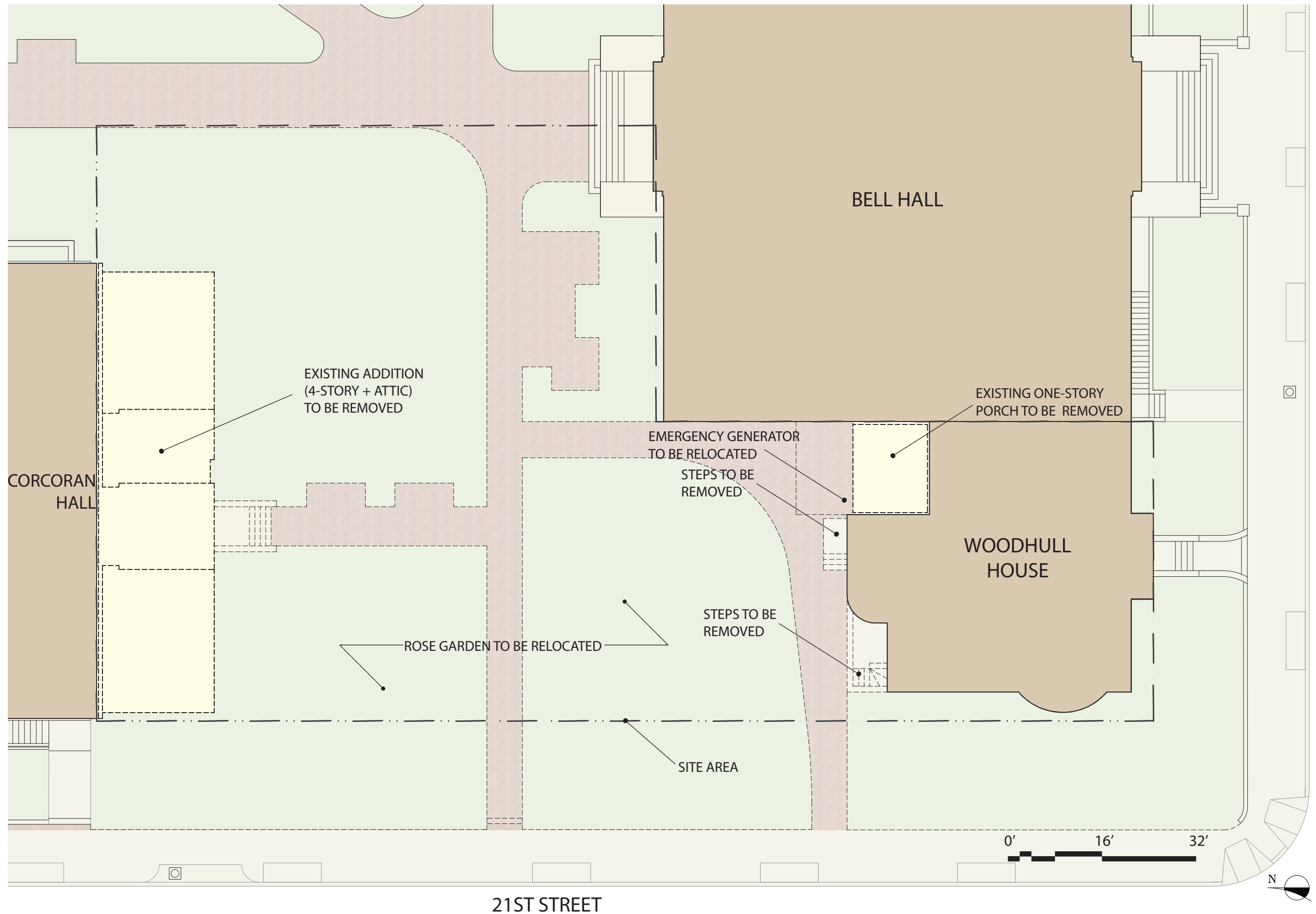
03/14/2012

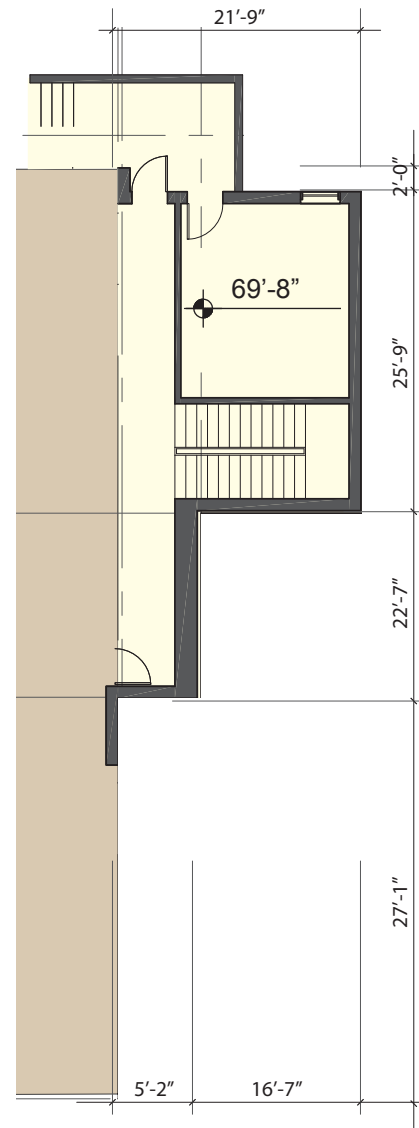
TITLE

Demolition Plan

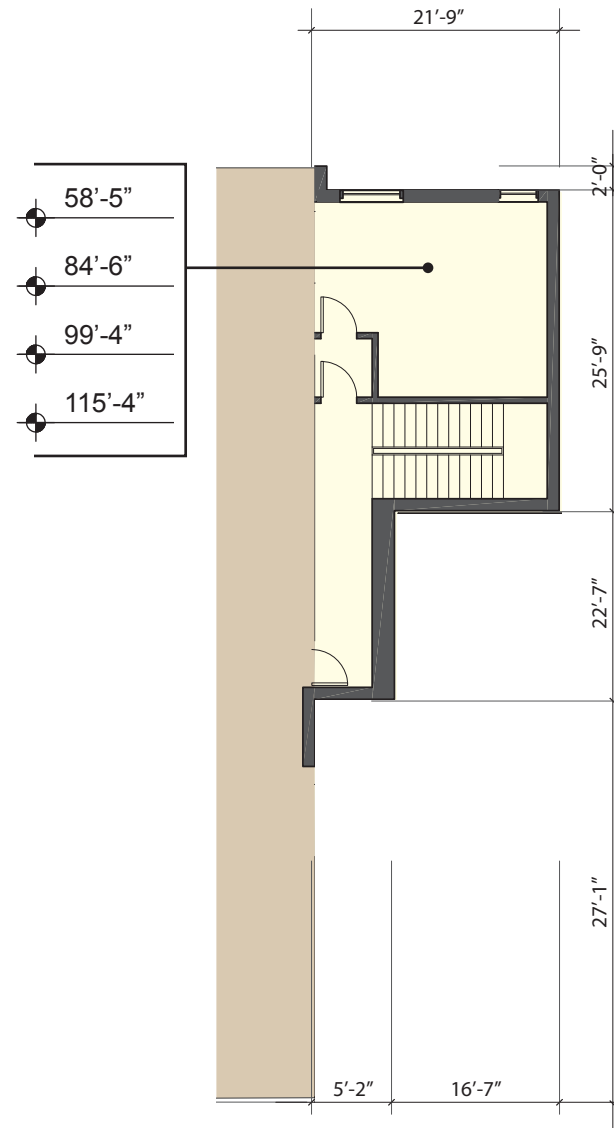
NUMBER

A-11

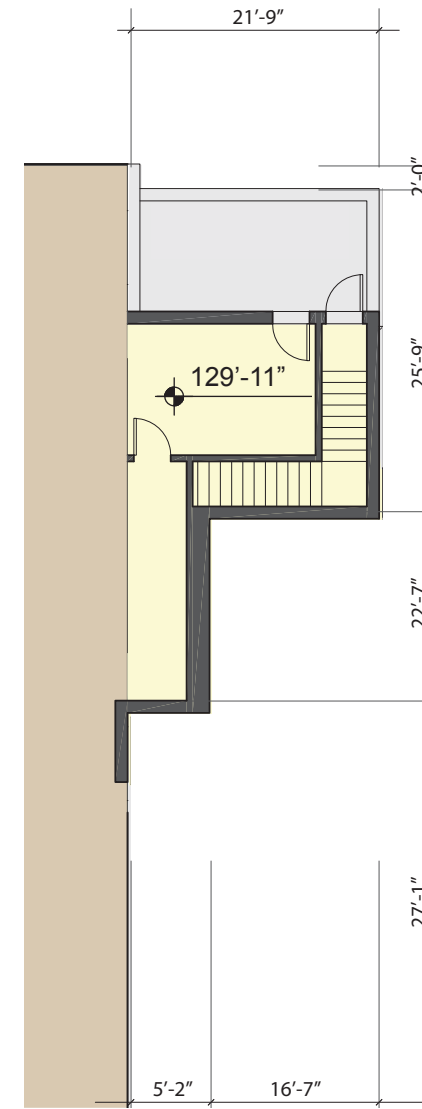




GROUND FLOOR



TYPICAL FLOOR

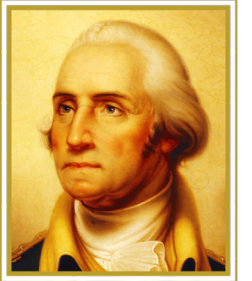


ATTIC LEVEL

NEW CORCORAN HALL ADDITION



NOTE: INTERIOR LAYOUTS ARE ILLUSTRATIVE ONLY AND SUBJECT TO CHANGE ON FINAL PLAN

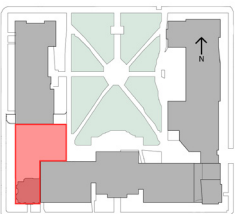


THE GEORGE
WASHINGTON
UNIVERSITY
WASHINGTON DC

The
George
Washington
University
Museum

HARTMAN-COX
ARCHITECTS

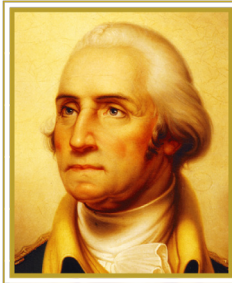
KEY PLAN



DATE
03/14/2012

TITLE
Corcoran Hall
Addition

NUMBER
A-12

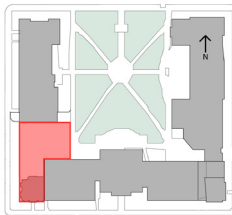


THE GEORGE
WASHINGTON
UNIVERSITY
WASHINGTON DC

The
George
Washington
University
Museum

HARTMAN-COX
ARCHITECTS

KEY PLAN



DATE

03/14/2012

TITLE

Corcoran Hall
Addition Elevation

NUMBER

A-13



GW MUSEUM
(INFILL)

CORCORAN
HALL
ADDITION

CORCORAN
HALL

0' 16' 32'

