

2100 Pennsylvania Avenue, NW



DC Zoning Commission
Public Hearing
October 12, 2017

Agenda

- Project Overview
- GW Campus Plan
- Design
- Transportation Overview
- Benefits and Amenities
- Summary / Conclusion

Agenda

- Project Overview
- GW Campus Plan
- Design
- Transportation Overview
- Benefits and Amenities
- Summary / Conclusion

Site Context Map



Agenda

- Project Overview
- **GW Campus Plan**
- Design
- Transportation Overview
- Benefits and Amenities
- Summary / Conclusion

Space Migration - Background

- Migration of uses from Rice Hall will be accomplished no later than December 2018
- Foggy Bottom administrative space requirements are decreasing:
 - Change in space planning guidelines
 - Increase in telecommuting (& shared workspaces)
 - Improved strategies for space use
 - Effective use of other GW campuses

Space Study - Analysis

- Reduced future space needs
 - Address departmental functions and adjacency requirements
 - Meet requirement to be in Foggy Bottom vs other campuses
 - Future growth or reduction in staffing
- Consolidation of administrative functions
- Shared workspaces and adjacencies that facilitate collaboration and right-size space

Space Study - Outcomes

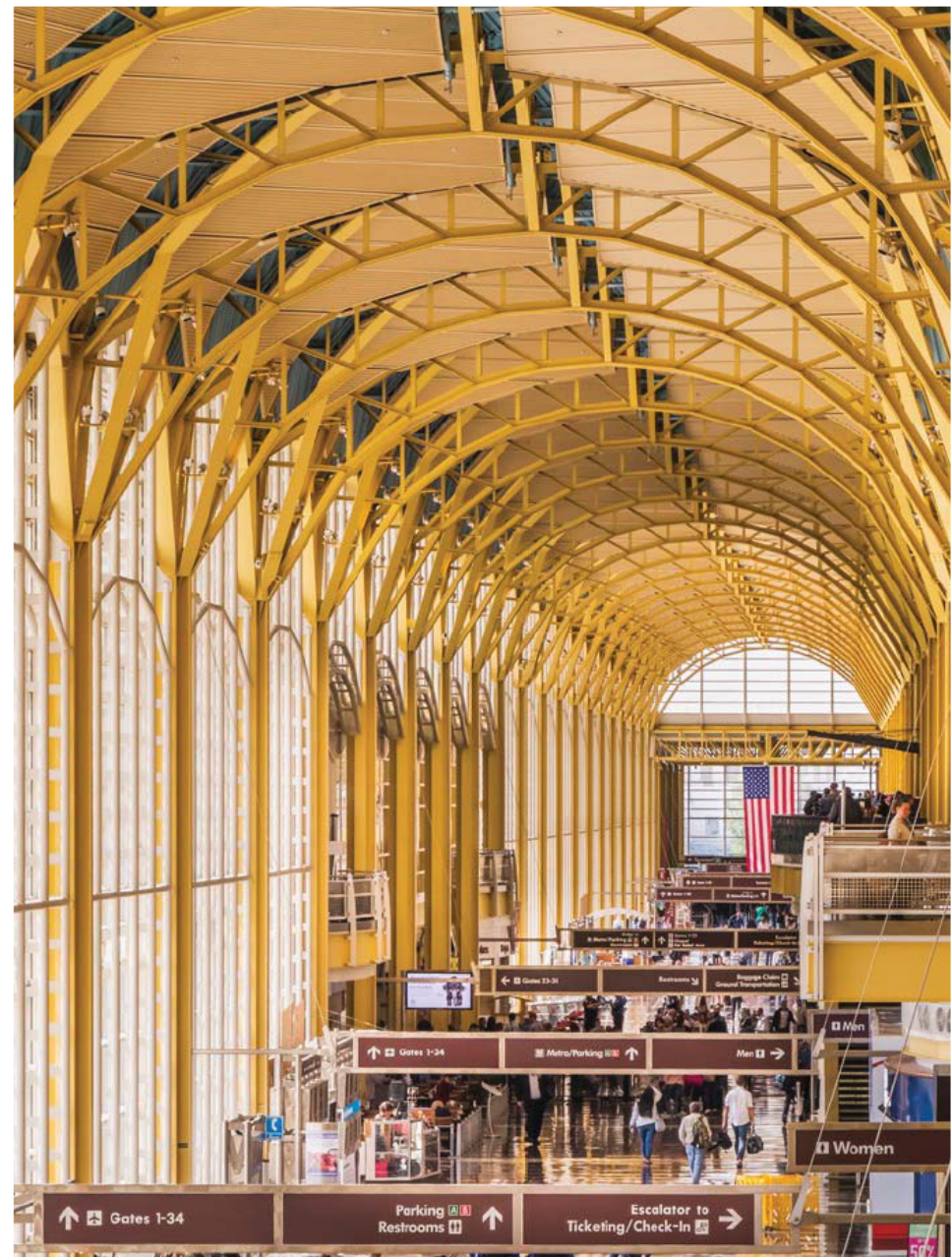
- Affected departments/units will be relocating to spaces on all three campuses
- Administrative functions will have reduced footprint in Foggy Bottom
- Primary relocation destinations for Rice Hall occupants:
 - Old Main
 - 1918 F (current Alumni House)
 - MVC - Academic Building
 - VSTC – Enterprise Hall & Research Place
- Other administrative users will relocate to consolidate within existing office spaces in other buildings

Space Study - Outcomes

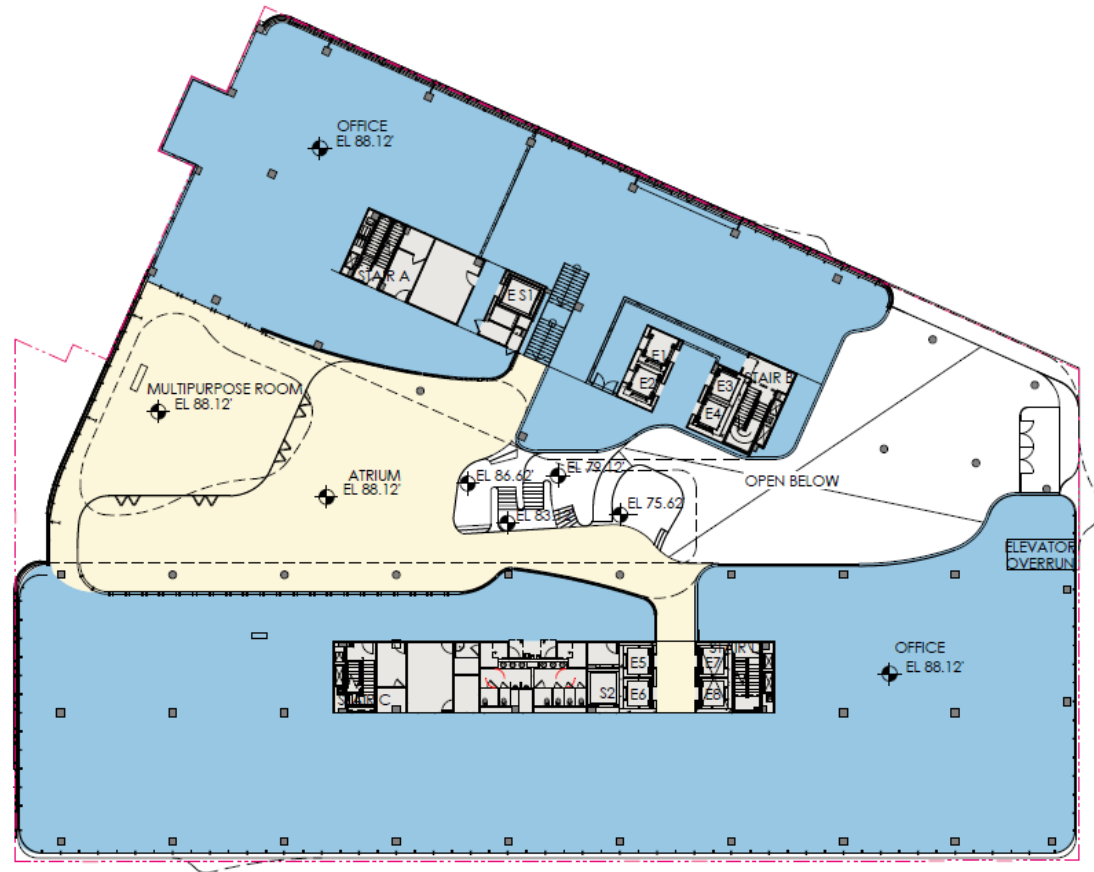
- Existing occupants of Old Main & 1918 F Street will also relocate as a part of this project
 - Many groups are smaller in size and will relocate to space within existing academic buildings
 - Samson Hall (vacated by moves to Science & Engineering Hall) will be used to accommodate some larger departments/units
 - Some academic departments will also relocate to the Mount Vernon Campus
 - Psychology (1st floor user) will return to Old Main following renovations

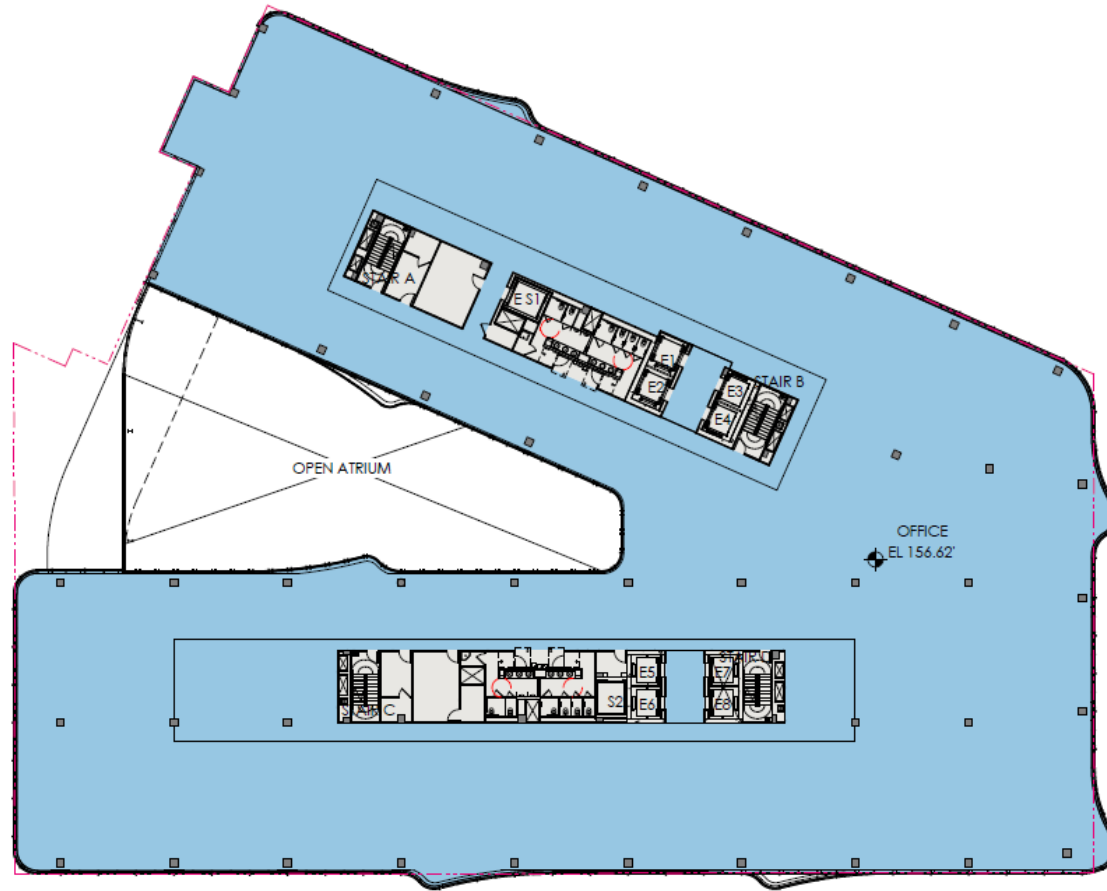
Agenda

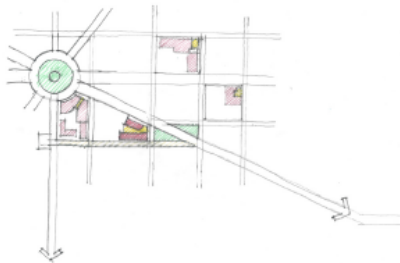
- Project Overview
- GW Campus Plan
- Design
- Transportation Overview
- Benefits and Amenities
- Summary / Conclusion



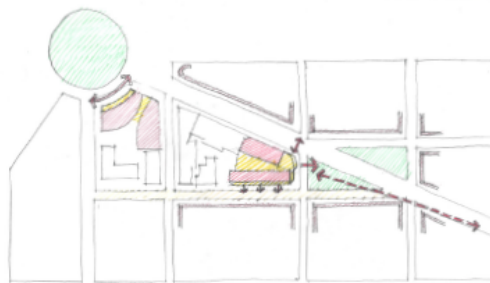




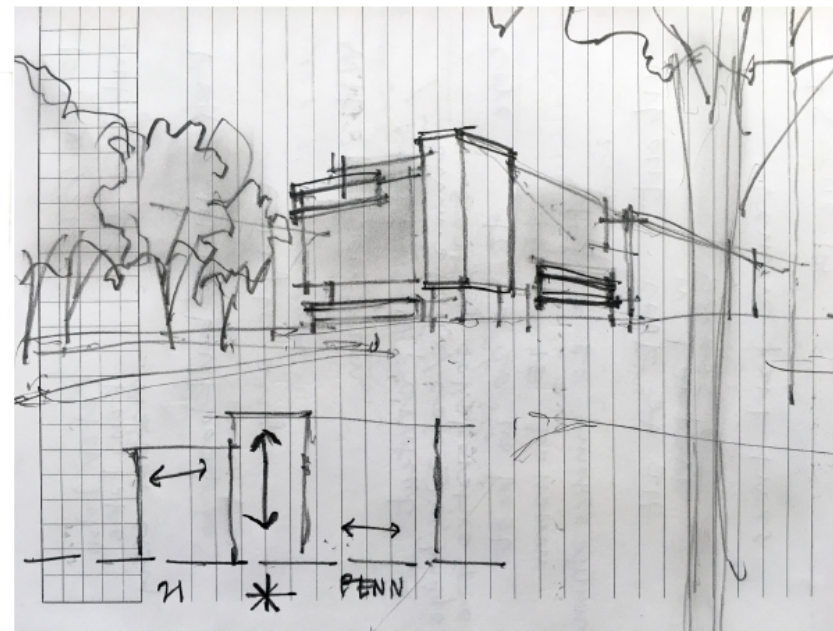




NEIGHBORHOOD RELATIONSHIPS
FOGGY BOTTOM / GARDEN TRIANGLE



PUBLIC SPACE RELATIONSHIPS
GEORGE WASHINGTON UNIVERSITY - NORTH CAMPUS



FAÇADE & MASSING CONCEPT DIAGRAM
PROMINENT CORNER / SECONDARY BAYS



PROMINENT CORNER FRONTAGE
FLATIRON BUILDING, NYC



URBAN ANIMATION WITH INTEGRATED BAY WINDOWS
LA PADRERA / CASA MILA, BARCELONA