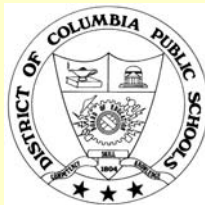


School Without Walls Partnership

District of Columbia Public Schools and The George Washington University

ANC-2A PUBLIC MEETING PRESENTATION – October 18, 2006



DMJM | CGS



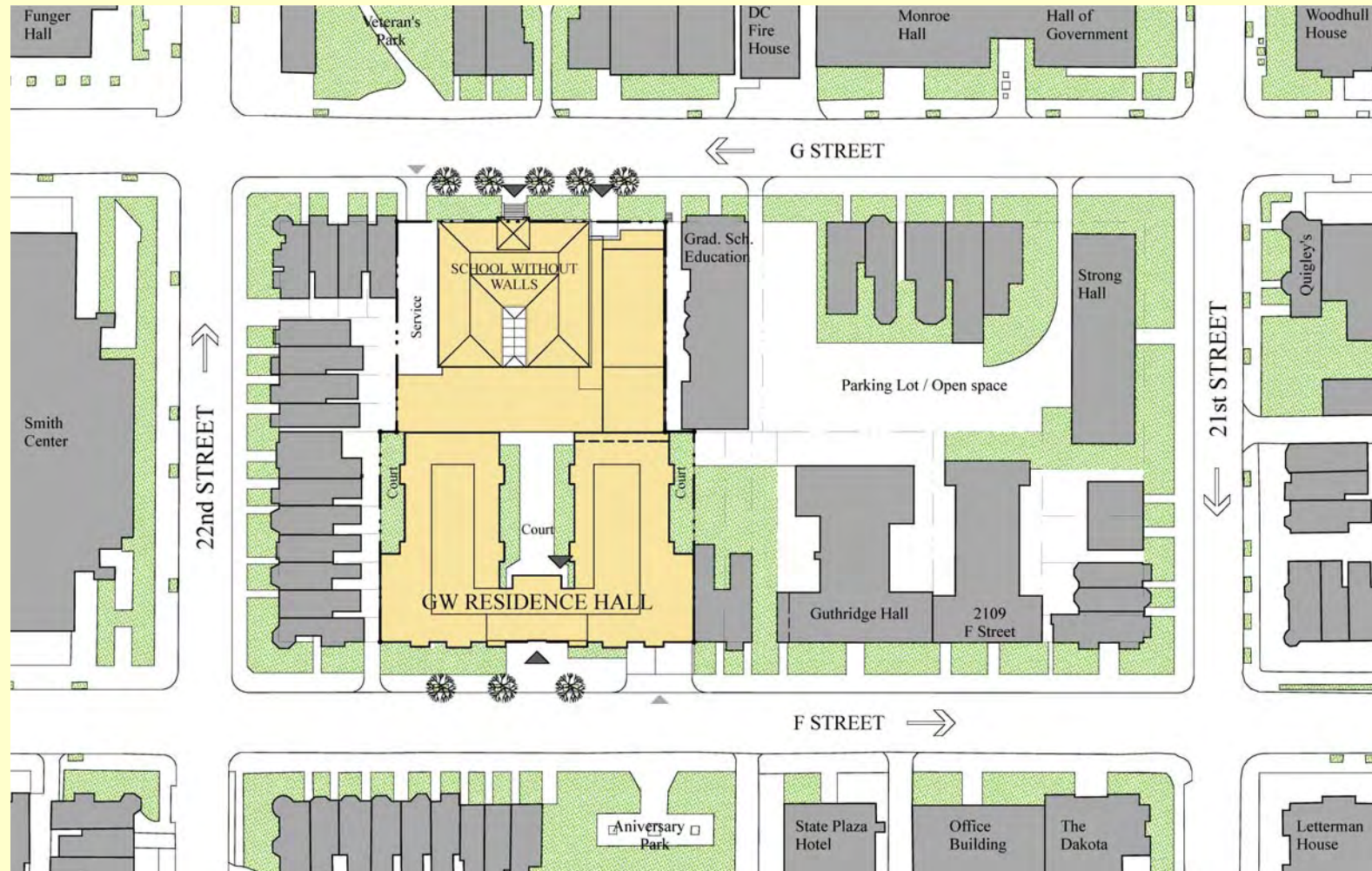
- **Joint application by DC Public Schools and The George Washington University**
 - Modernization and expansion of School Without Walls (Grant School) on G Street and a new GW undergraduate student residence hall on F Street
 - Accomplished through a joint Planned Unit Development and Zoning Map Amendment (rezoning to SP-2)
 - Public Hearing before the DC Zoning Commission is scheduled for October 30, 2006
- Application is a result of a MOU signed by DCPS and GW that establishes a development partnership and expands the existing programmatic partnership

- **The Development Partnership**
 - Sale of small parcel of DCPS land on F Street (currently the SWW back parking lot) - land transfers to GW
 - GW will pay approximately \$12 million to DCPS for this land and additional development rights provided through the planned unit development and rezoning
 - DCPS will use this funding (as well as additional DCPS funds) for the modernization and expansion of the Grant School
 - GW will construct an undergraduate student residence hall on F Street

- **Programmatic Partnership**
 - **The Existing Partnership**
 - **SWW has been located within GW's campus boundaries since 1971**
 - **SWW and GW in partnership since 1980**
 - **Facilities Sharing**
 - **GW course opportunities for SWW students and faculty**
 - **Educational and Teaching collaborations**

- **Programmatic Partnership (ctd.)**
 - MOU executed by DCPS and GW strengthens the longstanding partnership between SWW and GW
 - Established an Education Taskforce to enhance the collaboration and programmatic relationship between GW & SWW
 - Continuation of existing partnerships, additional synergies to be identified by the Taskforce

Site Plan

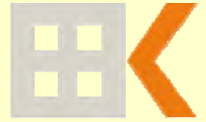


“Streetwall” Architecture: Bays, Tops



The Grant School Freestanding

EHRENKRANTZ
ECKSTUT
& KUHN
ARCHITECTS



THE GEORGE
WASHINGTON
UNIVERSITY
WASHINGTON, D.C.



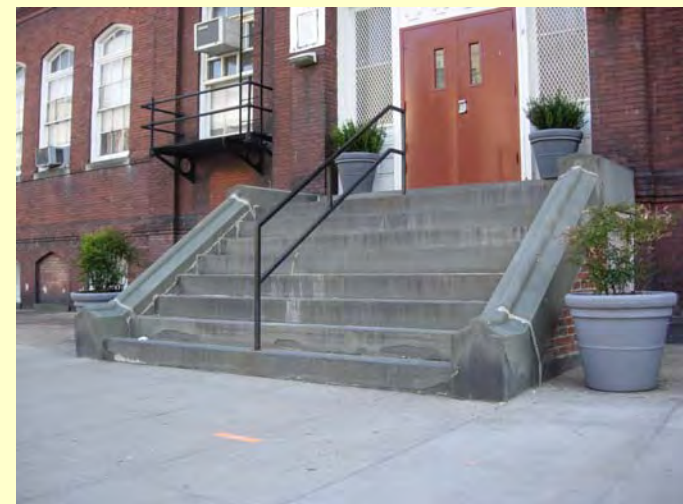
SCHOOL WITHOUT WALLS PARTNERSHIP
District of Columbia Public Schools & The George Washington University

October 18, 2006

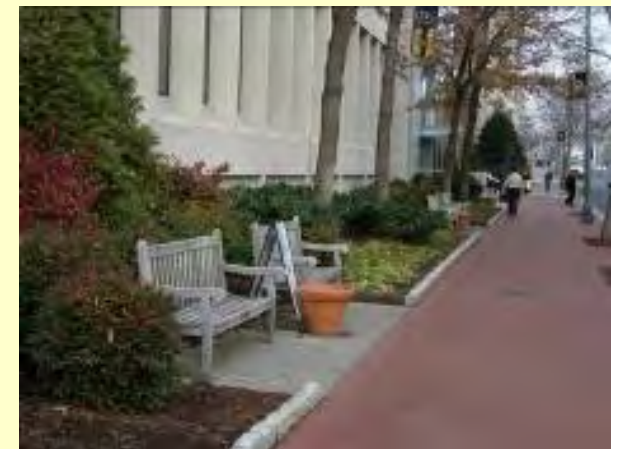
The Addition Appears Freestanding



Material Palette



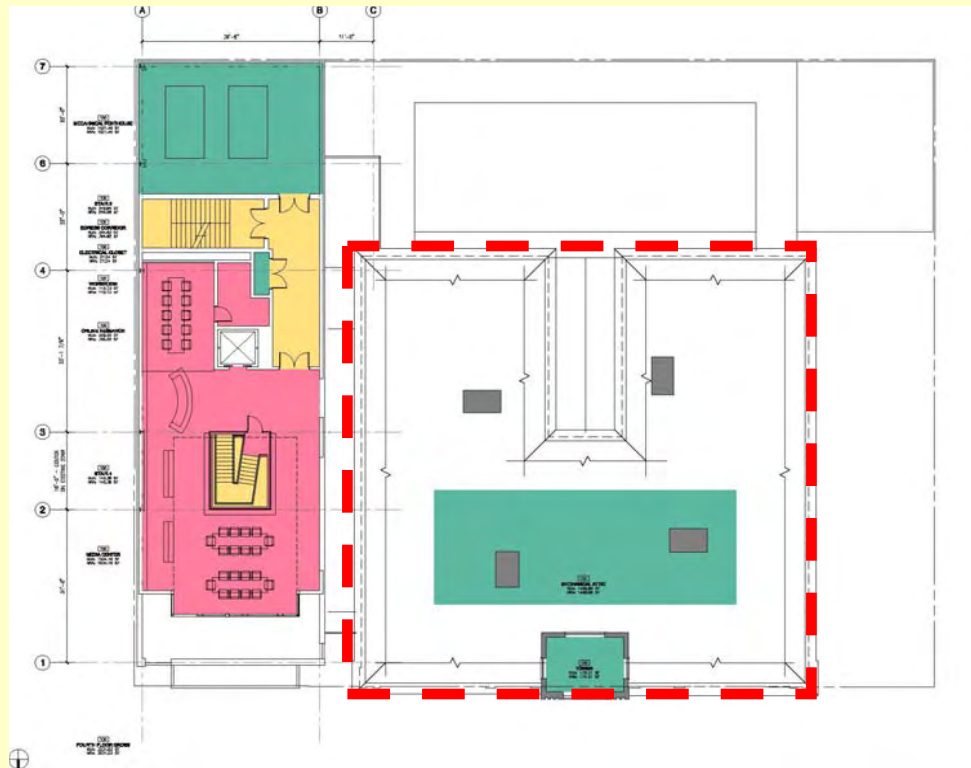
An Useful and Inviting Plaza



Second Floor Plan

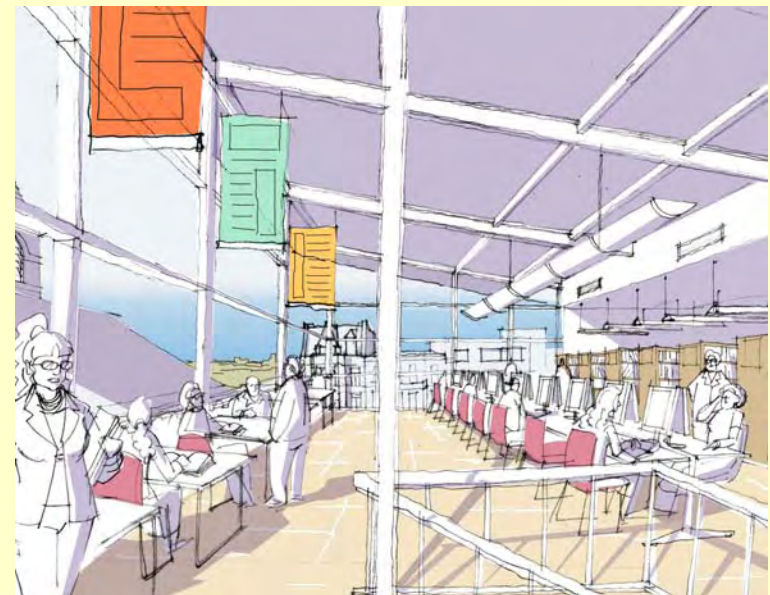


Fourth Floor Plan



PROGRAMMATIC LEGEND:

- | | |
|---|---|
|  CORE ACADEMIC PROGRAM |  MAINTENANCE AND CUSTODIAL |
|  MEDIA CENTER |  ROOF TERRACE |
|  PERFORMING ARTS / ASSEMBLY |  BUILDING CIRCULATION |
|  VISUAL ARTS |  BUILDING SUPPORT |
|  PE / HEALTH | |
|  ADMINISTRATIVE SERVICES | |
|  GUIDANCE AND STUDENT SERVICES | |

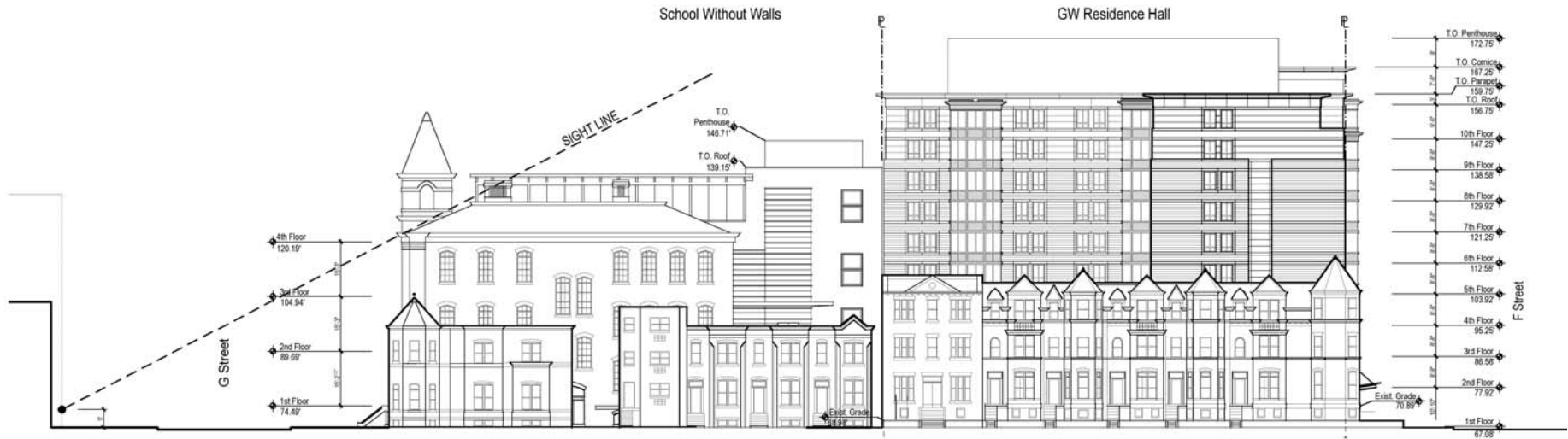


G Street Elevation



22nd Street Elevation (SWW & GW Project)

DMJM | CGS



SCHOOL WITHOUT WALLS PARTNERSHIP
District of Columbia Public Schools & The George Washington University

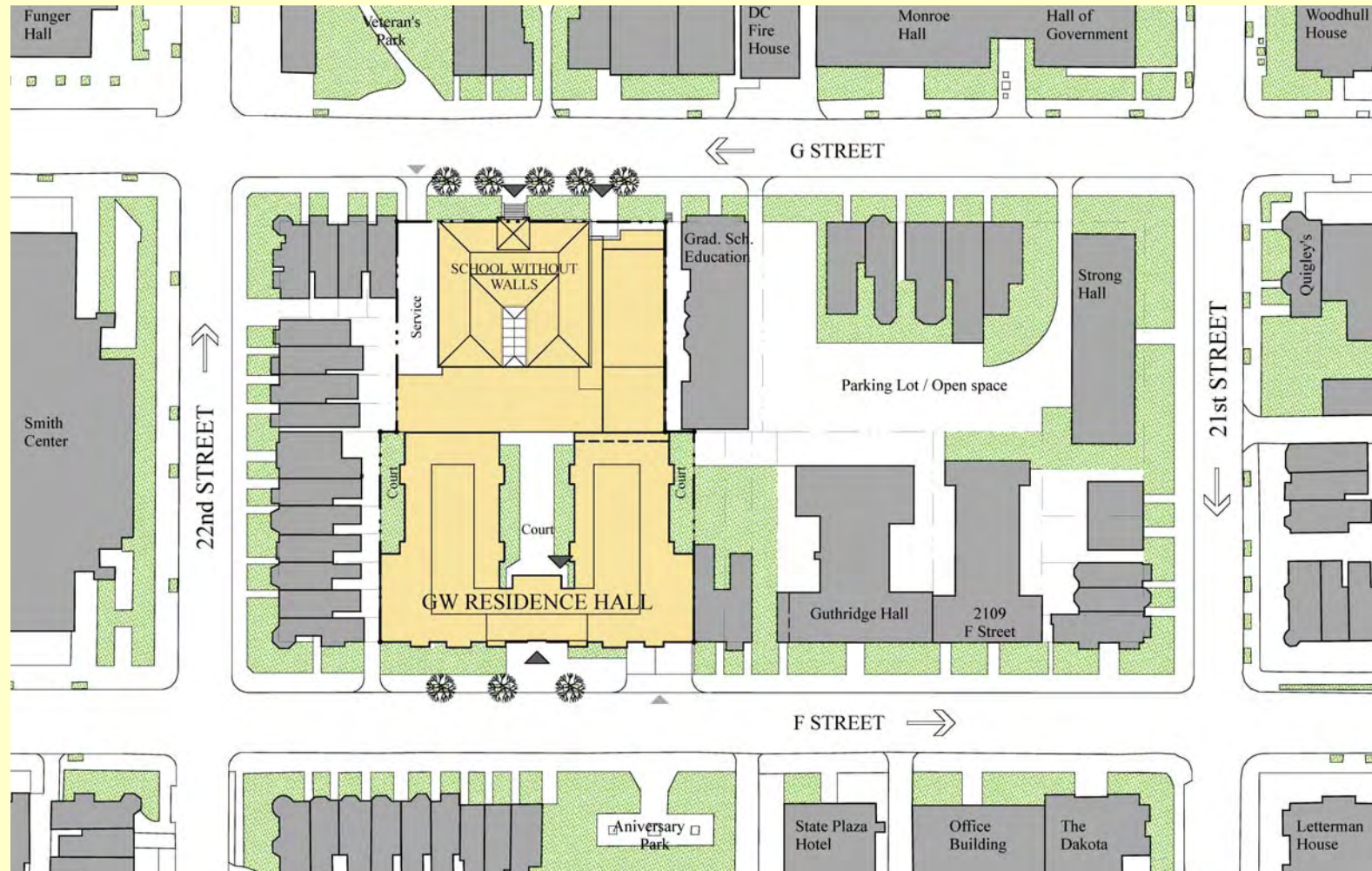
October 18, 2006

GW Residence Hall Project

DMJM | CGS

- **Building design reflects principles developed through summer community-based planning process resulting in the proposed Foggy Bottom Campus Plan: 2006-2025**
- **Building Program**
 - Provides approximately 474 beds
 - Typical unit includes four single bedrooms with shared kitchen, living area and two bathrooms
 - Approximately 178 parking spaces (including valet)
 - Approximately 192,000 square feet above grade
- **Helps Achieve GW's Undergraduate Housing Goals**
 - Additional on-campus housing for undergraduate students
 - Assists GW in maintaining long-term compliance with the Campus Plan housing condition
 - Provides additional on-campus undergraduate student housing to replace off-campus facilities that are proposed to be transitioned from undergraduate student housing uses as a condition of the proposed *Foggy Bottom Campus Plan: 2006-2025*

Site Plan



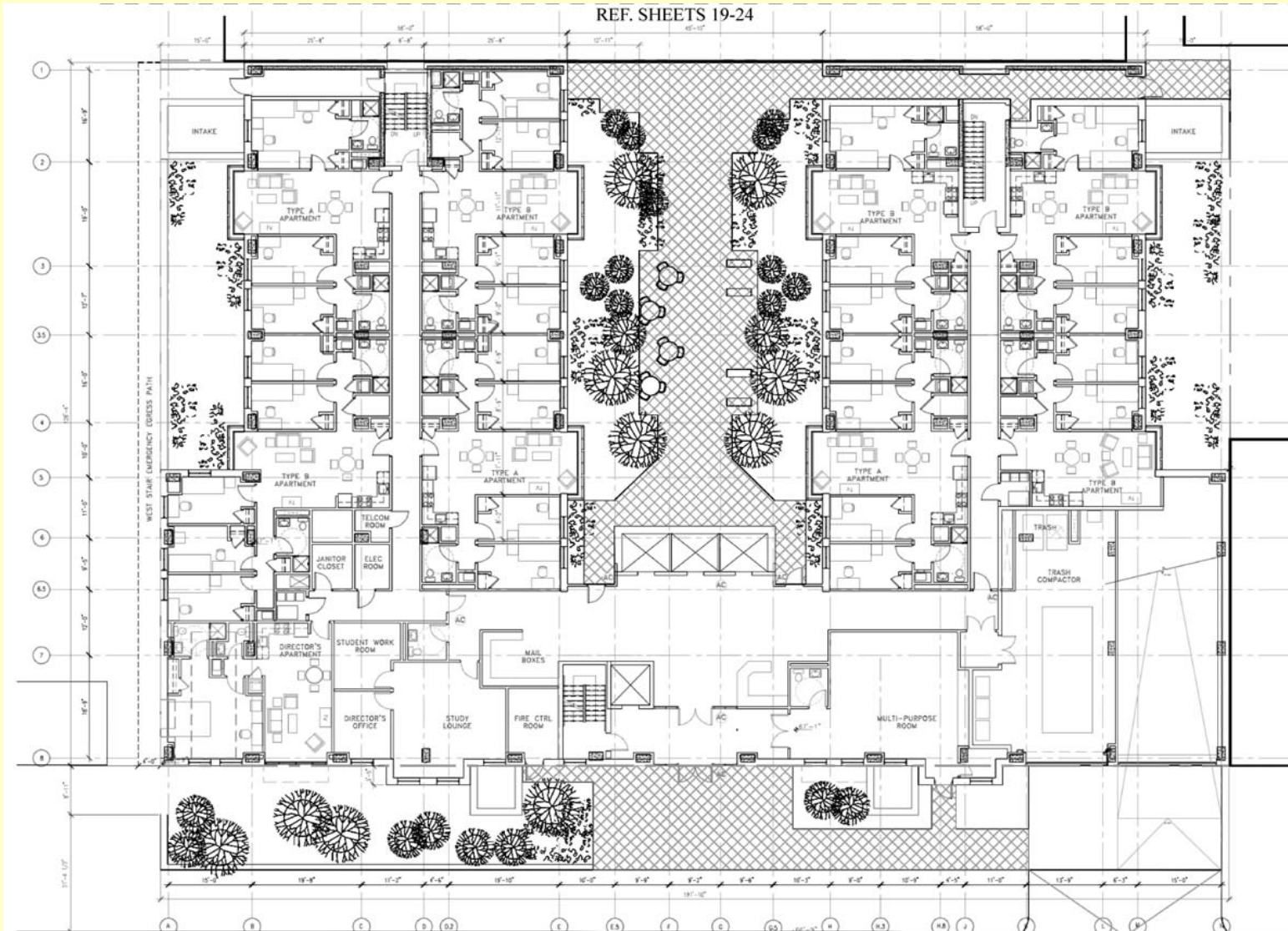
F Street – Context Photographs

DMJM | CGS

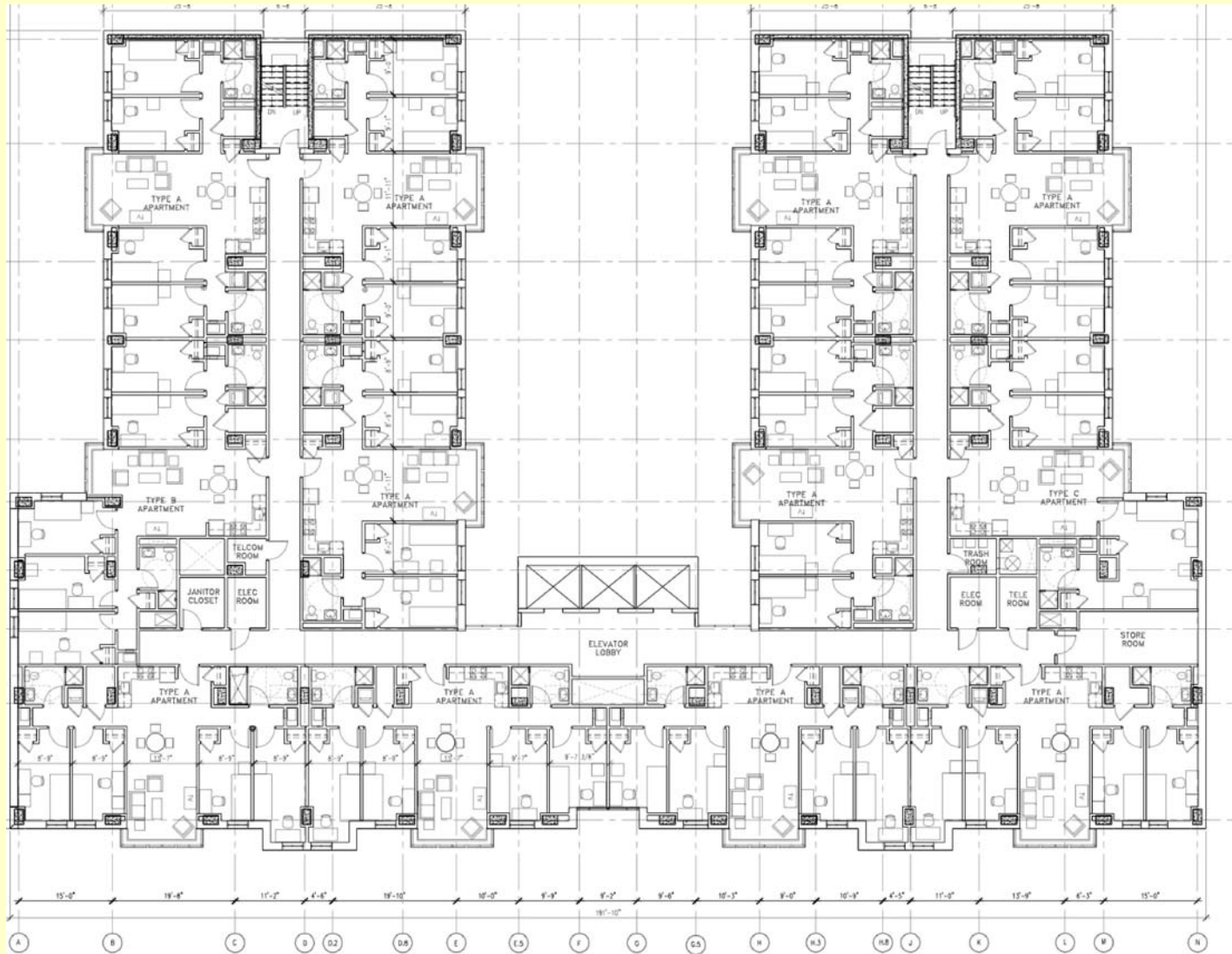


GW Residence Hall Project - 1st Floor Plan

DMJM | CGS



GW Residence Hall Project - Typical Floor Plan DMJM | CGS



GW Residence Hall Project

F Street Elevation (Rendering)

DMJM | CGS



GW Residence Hall Project

DMJM | CGS

F Street Perspective (Rendering)



The Joint Planned Unit Development

- Joint Project Statistics**

Above Grade SF (approx)	240,000 GFA
Total Land Area (approx)	46,000 SF
Maximum Height	90' on F Street 89' on G Street (existing tower)
Lot Coverage (approx)	81%
Total FAR (approx)	5.29

The Joint Planned Unit Development

- **PUD Amenities**
 - Modernization and Expansion of the School Without Walls (Grant School)
 - Enhanced Programmatic Collaboration
 - Historically sensitive modernization and construction of SWW addition
 - Implementation of streetscape improvements consistent with the proposed Streetscape Plan
 - Accommodates parking below-grade
 - Additional on-campus undergraduate student housing

For More Information...

DMJM | CGS



- **Neighborhood.gwu.edu**
 - **Information/Documentation Sharing Section**
 - Community Meeting Presentation & Materials
 - Original PUD Filing (April 3, 2006)
 - Pre-Hearing Submission (June 23, 2006)
 - 20-Day Submission (October 10, 2006)
 - Website will be updated to include a new section dedicated to the GW/SWW Development Project
- **School Without Walls HSA website**
 - www.swwhs.org