

SQUARE 77, SITE 77A

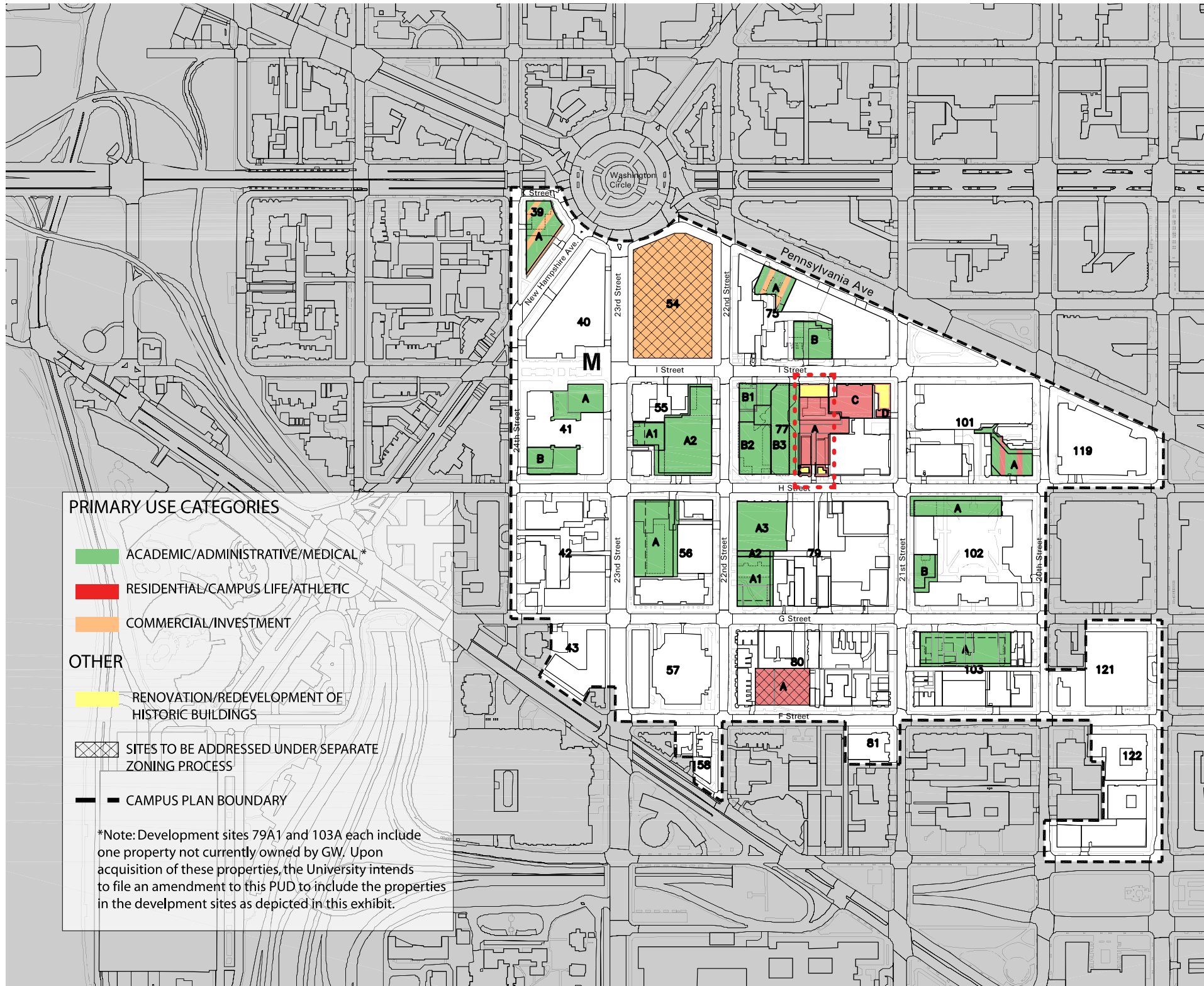
WASHINGTON, DC

HPRB REVIEW SUBMISSION

FEBRUARY 28, 2013

SHEET	TITLE
A1	FOGGY BOTTOM CAMPUS PUD
A2	FOGGY BOTTOM CAMPUS PLAN
A3	SITE AERIAL
A4-A5	EXISTING SITE PHOTOGRAPHS
A6	EXISTING STRUCTURE
A7	PRESERVATION PLAN
A8	PROPOSED SITE CONDITIONS
A9-A11	STREETScape PLAN
A12	PENTHOUSE DEVELOPMENT
A13-A14	AXONOMETRICS
A15-A20	FLOOR PLANS
A21	BUILDING SECTION
A22-A25	ELEVATIONS
A26-30	STREET LEVEL PERSPECTIVES
A31	H-STREET ENTRY SEQUENCE
A32	PROPOSED PARAPET CONDITION
A33	MATERIAL SELECTION
A34	PROJECTED LEED CERTIFICATION





PRIMARY USE CATEGORIES

- ACADEMIC/ADMINISTRATIVE/MEDICAL*
- RESIDENTIAL/CAMPUS LIFE/ATHLETIC
- COMMERCIAL/INVESTMENT

OTHER

- RENOVATION/REDEVELOPMENT OF HISTORIC BUILDINGS
- SITES TO BE ADDRESSED UNDER SEPARATE ZONING PROCESS
- CAMPUS PLAN BOUNDARY

*Note: Development sites 79A1 and 103A each include one property not currently owned by GW. Upon acquisition of these properties, the University intends to file an amendment to this PUD to include the properties in the development sites as depicted in this exhibit.

Square 77
Development Site 77A

Existing

75' Height
141,788 GFA
R-5-D Zone

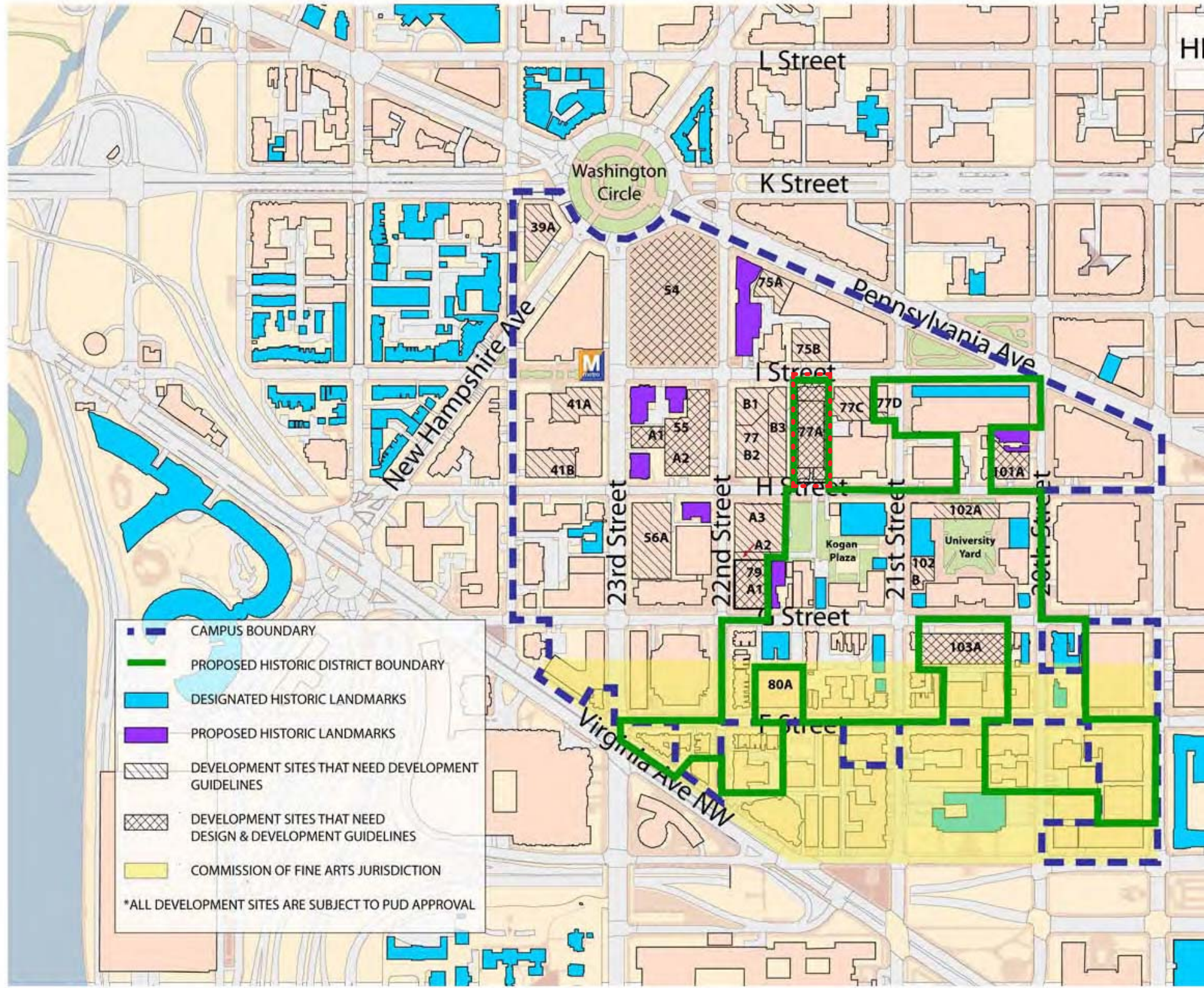
Approved

110' Height
316,500 GFA
C-3-C Zone



Foggy Bottom Campus PUD





Foggy Bottom Campus Plan: 2006-2025





Key

 Site



SITE AERIAL | A3



1.) View across H Street, from Kogan Plaza, looking north at Schenley and Crawford Halls.



2.) View from Kogan Plaza, looking north at Schenley and Crawford Halls.



3.) View to the west of Schenley between Schenley Hall and Academic Center.



4.) View of Schenley Hall entry looking north from across H Street.



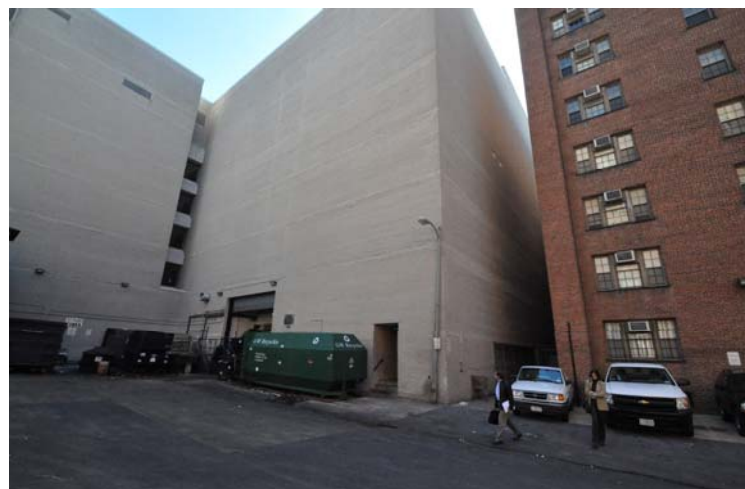
5.) View of Crawford Hall entry looking north from across H Street.



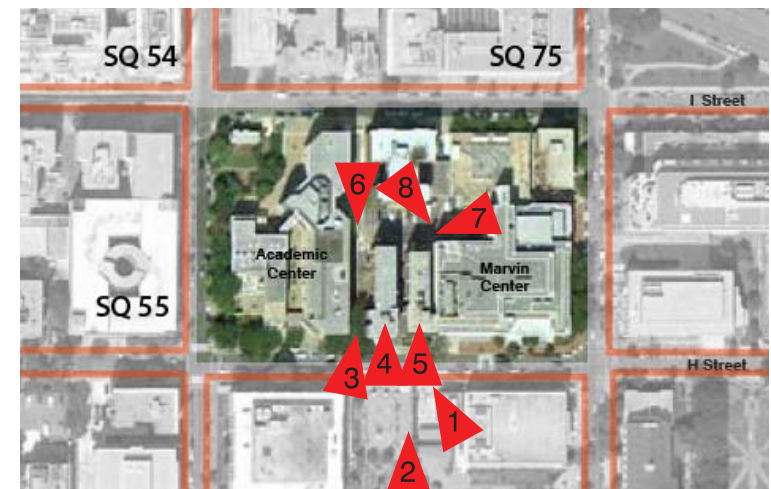
6.) View along service alley between The West End and Academic Center, looking south towards the rear of Schenley Hall.



7.) View from Marvin Center loading area, looking southwest towards Academic Center. Left to right: Crawford Hall, Schenley Hall, The West End.



8.) View from service area, looking southeast towards Marvin Center loading dock. Rear of Crawford Hall to the right.





9.) View from across Eye Street, looking southwest at The West End, with Academic Center to the right. Existing Marvin Center theatre loading and scene shop immediately to the left.



10.) View from across Eye Street, looking south at The West End, with Academic Center to the right and Marvin Center to the left.



11.) View from across Eye Street, looking southeast at the service alley between The West End and Academic Center.



12.) View along Eye Street, looking east towards Marvin Center with The West End scene in the foreground on the right.



13.) View along Eye Street, looking west towards Academic Center. The West End in the foreground to the left.



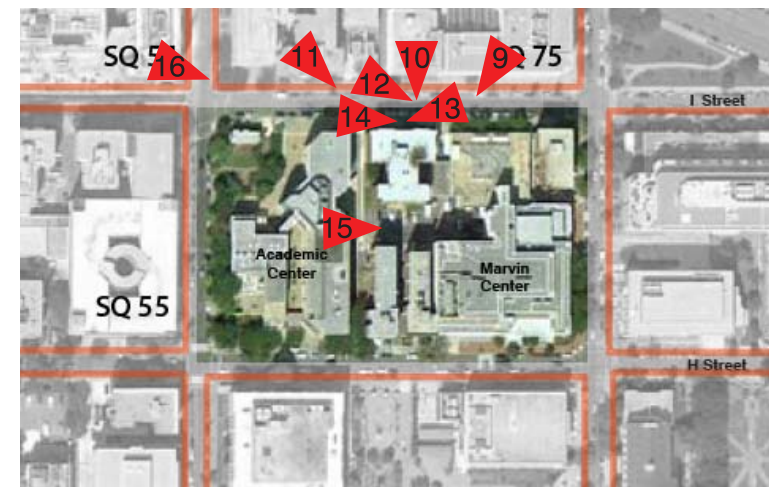
14.) View along Eye Street, looking east at the entry sidewalk of The West End.



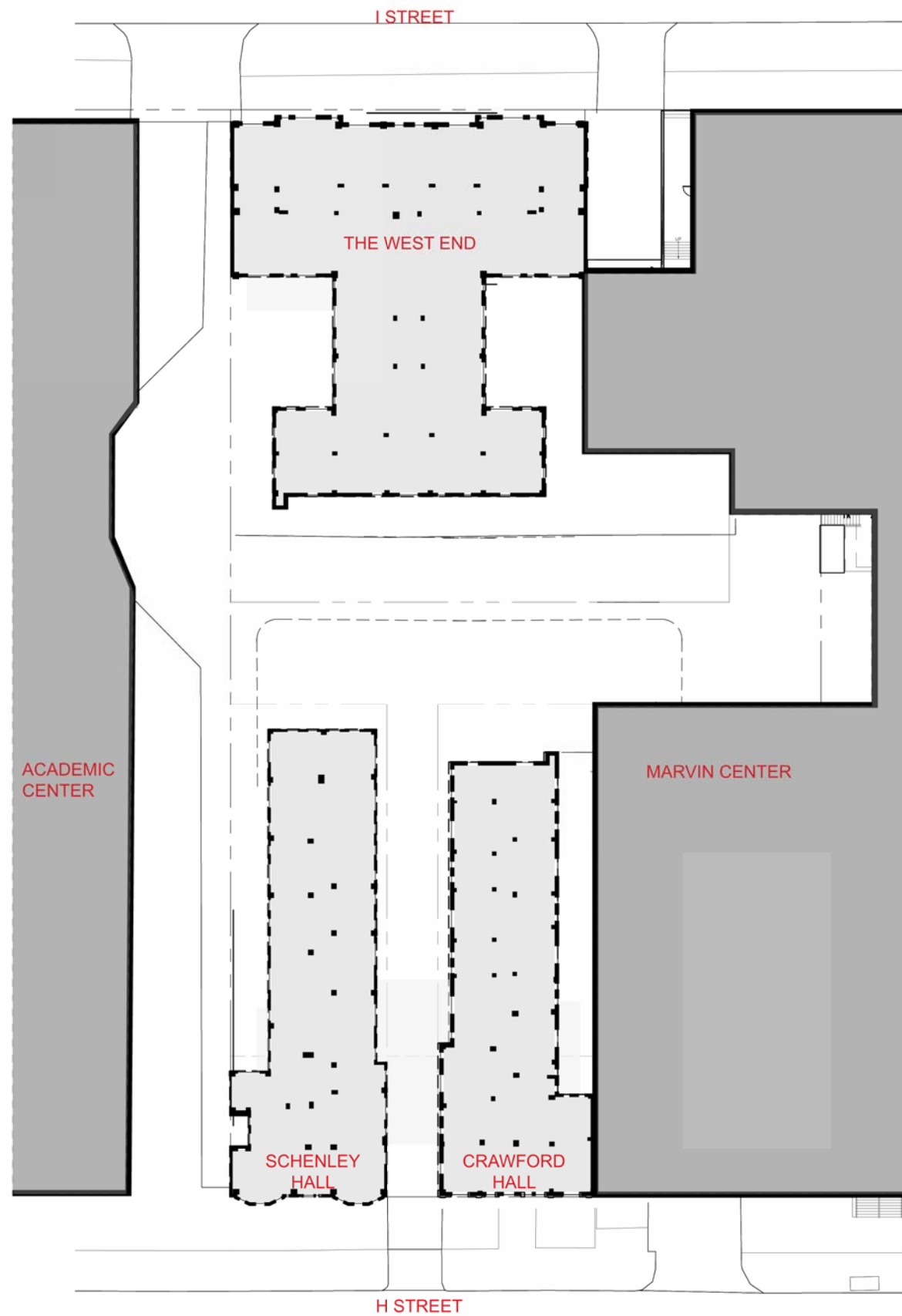
15.) View from service area, looking east towards Marvin Center loading dock. Rear of Schenley and Crawford Halls to the right. The West End rear to the left.



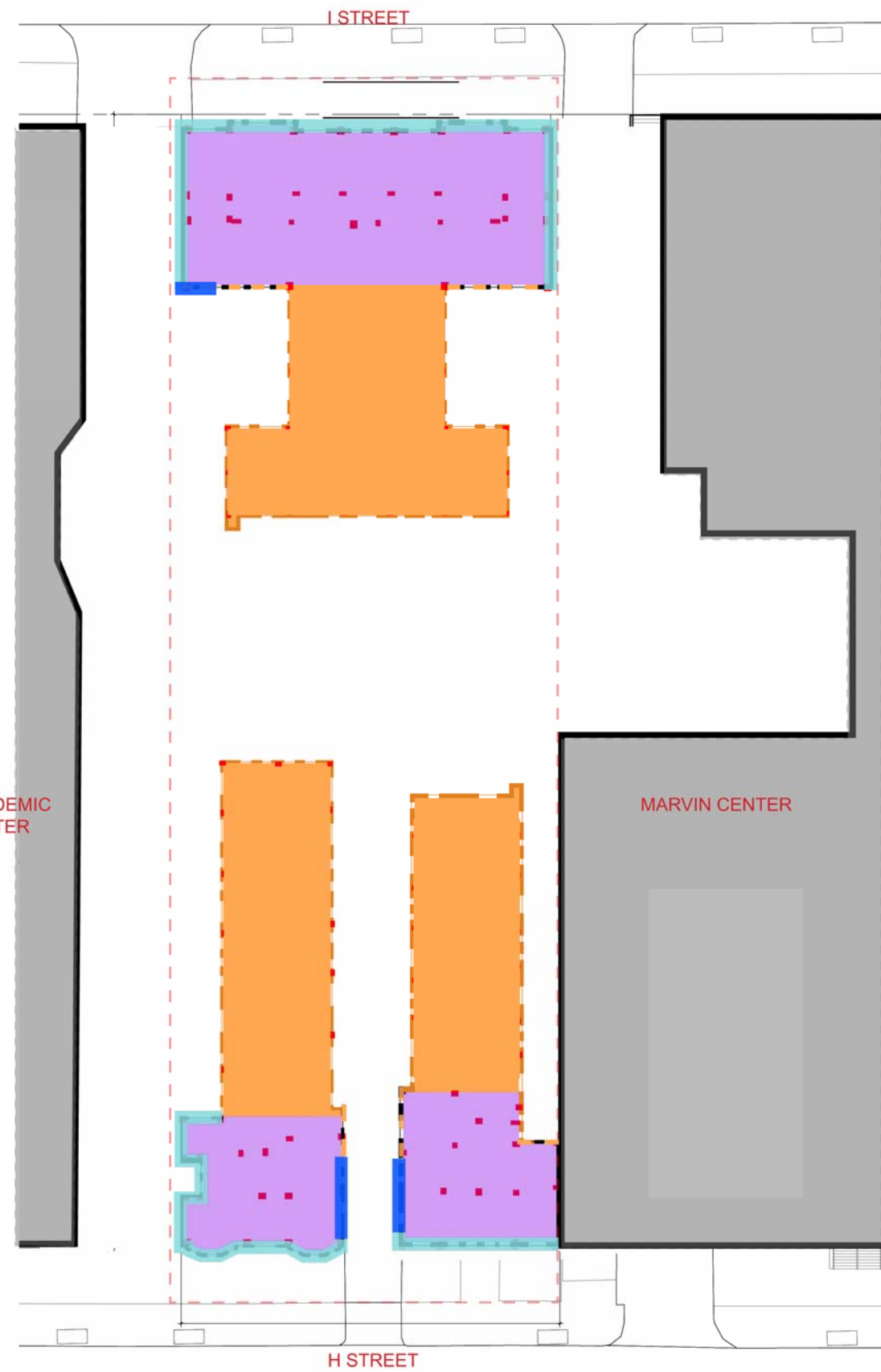
16.) Aerial view looking southeast towards The West End. Academic Center in the foreground.







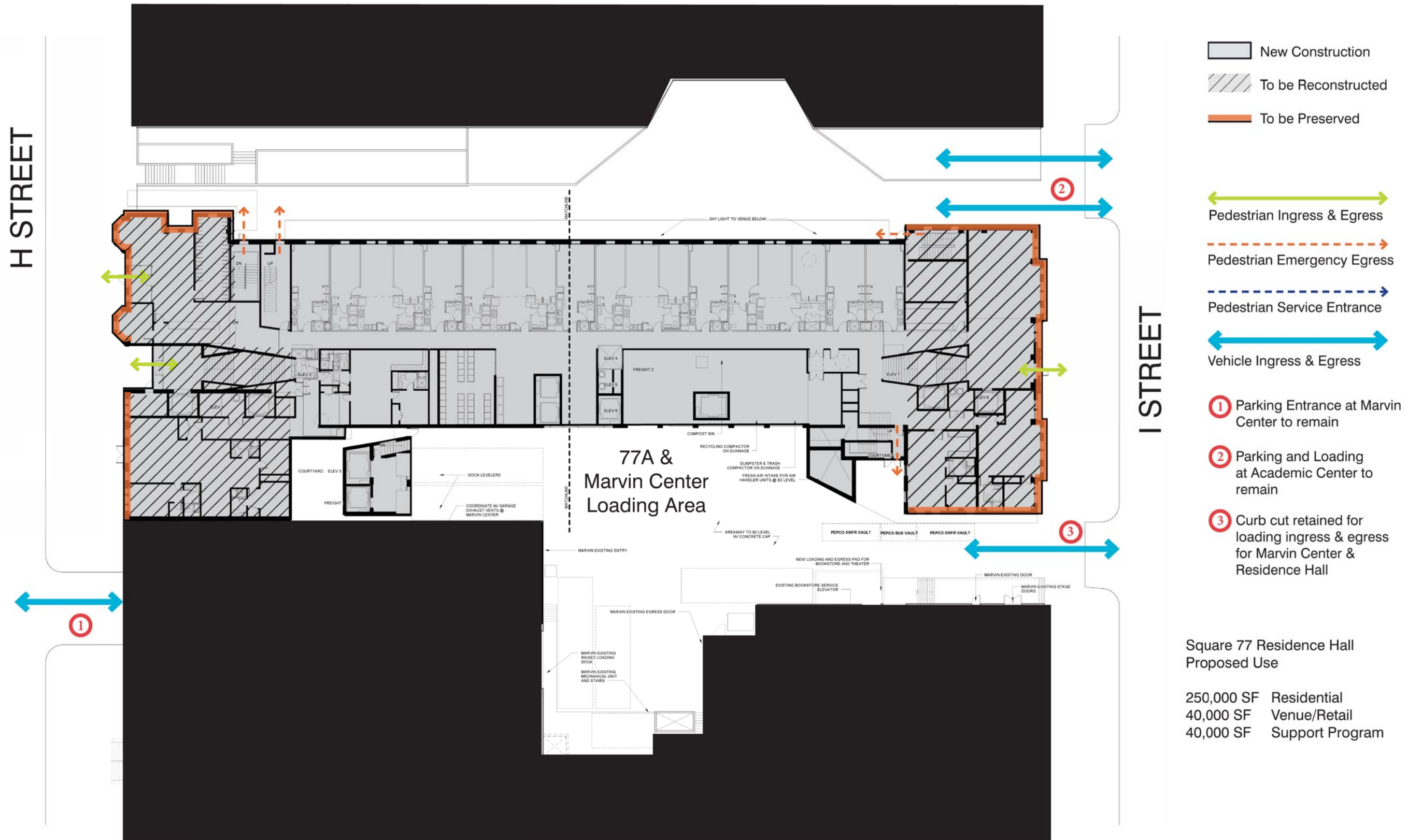
Existing conditions



Retain | Re-Build | Demolish

- Retain: █
- Remove floors and construct new floors at or near original location: █
- Rebuild facade: █
- Demolish structure and replace with new: █
- Demolish structure: █





- New Construction
- To be Reconstructed
- To be Preserved

- Pedestrian Ingress & Egress
- Pedestrian Emergency Egress
- Pedestrian Service Entrance
- Vehicle Ingress & Egress

- 1 Parking Entrance at Marvin Center to remain
- 2 Parking and Loading at Academic Center to remain
- 3 Curb cut retained for loading ingress & egress for Marvin Center & Residence Hall

Square 77 Residence Hall
Proposed Use

250,000 SF	Residential
40,000 SF	Venue/Retail
40,000 SF	Support Program

