



CHARLES E. SMITH CENTER

CHARLES E. SMITH CENTER
THE SIGNATURE BUILDING IN THE HEART OF GW

AN EXPERIENCE THAT



WILL EXCEED EXPECTATIONS



“Together, we will transform the Charles E. Smith Center into a state-of-the-art venue . . . worthy of its namesake, of this university, and of this great capital city.”

—Steven Knapp
GW President



CHARLES E. SMITH CENTER

cingular

Coca-Cola

COMPTON

architectural concept drawing by Gensler

*“The Charles E. Smith Center has always been a source
promotes healthy minds and bodies, as well as the spirit of
of my father’s life and work.”*



*of pride to our family because it
community, which were hallmarks*

—Robert H. Smith
GW Trustee Emeritus



Charles E. Smith



Sarah-Jo Lawrence

“Leadership delivers what is needed at the right time. I learned that here at GW.”

—Sarah-Jo Lawrence, BA '08
Presidential Administrative Fellow
Atlantic 10 Women's Basketball
Student-Athlete of the Year, 2008

The Spirit and Pride of the Community

The Charles E. Smith Center is a place where. . .

- students begin their college career at orientation and celebrate its completion at graduation;
- alumni return to cheer on GW's Division I basketball, volleyball, gymnastics, swimming, and water polo teams; and
- fans enjoy the nation's top entertainers and other special events in a 5,000-seat arena.

Built in 1975 and named for developer and philanthropist Charles E. Smith, the facility embodies the spirit and pride of the community.



“I walked onto this campus when the Charles E. Smith Center was less than a year old. . . . It was a shining example, even then, of what attracted me and others to come to GW. It allows our student-athletes to have a place where they can grow as athletes and grow as people who will later be the part of the leadership fabric of our country.”

—W. Russell Ramsey, BBA '81
Chairman, Board of Trustees
The George Washington University





“The Charles E. Smith Center is the catalyst for bringing everyone together. It’s the place where I’ll bring my kids and my kids’ kids and say this is the Smith Center, this is where I spent a lot of my life in college.”

—Vishal Aswani, Class of 2010
GW Student Association President



BE A PARTNER

The George Washington University invites you to be a partner in the transformation of the Charles E. Smith Center into a signature building—in both architecture and function—in the heart of the Foggy Bottom campus. The project will cost approximately \$43 million to complete, \$25 million of which needs to be raised through philanthropic commitments. The Robert H. Smith and Charles E. Smith Family Foundations and Robert P. and Arlene R. Kogod will match the first \$10 million in commitments by other donors to finance the transformation.

For information about naming opportunities, the Smith and Kogod families' match, or other ways to support the transformation of the Charles E. Smith Center, please contact the Division of Development and Alumni Relations at 202-994-9366, or visit development.gwu.edu and click on Giving Opportunities.

CHARLES E. SMITH CENTER



CHARLES E. SMITH CENTER

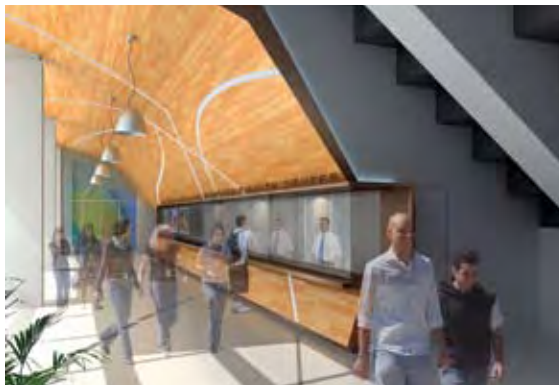
THE GEORGE WASHINGTON UNIVERSITY

WASHINGTON DC

www.development.gwu.edu

LIGHT, TRANSPARENCY, AND EXCITEMENT:
TRANSFORMING THE CHARLES E. SMITH CENTER





THE CHARLES E. SMITH CENTER ENTRY PAVILION AND HALL OF FAME CONCOURSE

The new design will generate energy and enthusiasm as soon as visitors enter the building. A better organized circulation plan to reduce congestion provides fans with quicker access to game day excitement.

**LIGHT, TRANSPARENCY, AND EXCITEMENT:
TRANSFORMING THE CHARLES E. SMITH CENTER**



CHARLES E. S



THE CHARLES E. SMITH CENTER CONCESSIONS CONCOURSE

With a design that celebrates the university's history, spirit, and pride, the new concourse on the second level centralizes food service, restrooms, and merchandise kiosks for an enhanced visitor experience. The area will serve as a lounge for student-athletes, coaches, staff, and alumni.

LIGHT, TRANSPARENCY, AND EXCITEMENT: TRANSFORMING THE CHARLES E. SMITH CENTER



CHARLES E. SMITH CENTER

LANE	PLACE	TIME
1	1	1:38.80
2	2	1:32.47
3	3	1:21.33
4	4	1:21.67
5	5	1:28.62
6	6	1:39.85
7	7	1:28.62
8	8	1:39.85





THE CHARLES E. SMITH CENTER NATATORIUM

The renovated natatorium will provide “home-pool” advantage to the men’s and women’s swimming, diving, and water polo teams. A new spectator area will improve sight lines and offer a larger seating capacity to encourage fan participation and interaction with the athletes. The new pool facility will also be available for use by members of the President’s Club.

LIGHT, TRANSPARENCY, AND EXCITEMENT: TRANSFORMING THE CHARLES E. SMITH CENTER





THE CHARLES E. SMITH CENTER STUDENT-ATHLETE ACADEMIC CENTER

This dedicated academic area will provide resources for athletes to ensure academic excellence and promote life-long learning. It will serve the educational needs of GW's athletes, with specialized group study and work areas, tutoring spaces, and computer resource rooms.

**LIGHT, TRANSPARENCY, AND EXCITEMENT:
TRANSFORMING THE CHARLES E. SMITH CENTER**





THE CHARLES E. SMITH CENTER ATHLETIC DIRECTOR'S CLUB

The renovated Athletic Director's Club conveys spirit and prestige. Located on the third level, it is the ideal location for banquets, lunches, pre-game events, and ceremonies. Combined with the new Colonials Club, the Athletic Director's Club will improve interaction among members of the university community.

LIGHT, TRANSPARENCY, AND EXCITEMENT: TRANSFORMING THE CHARLES E. SMITH CENTER





THE CHARLES E. SMITH CENTER BASKETBALL LOCKER ROOMS

The men's and women's basketball locker rooms are designed to be consistent with those of other top facilities in the NCAA. The team locker room, grooming and shower areas, and meeting space make this area a selling point for attracting and retaining high caliber student-athletes.

**LIGHT, TRANSPARENCY, AND EXCITEMENT:
TRANSFORMING THE CHARLES E. SMITH CENTER**





THE CHARLES E. SMITH CENTER COLONIALS CLUB

With high-end finishes and unique design elements, the Colonials Club creates a new VIP section with court-side seating in a sophisticated environment. Ideal for special donor receptions, dinners, and events, this area communicates the prestige of membership while encouraging donor support and involvement.